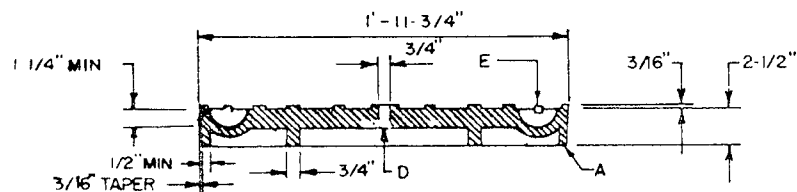
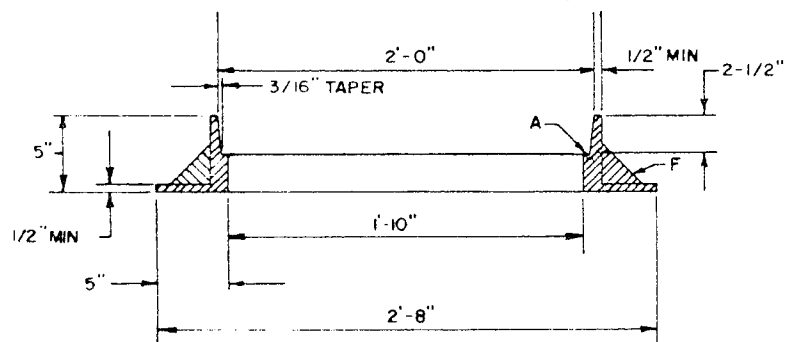


PLAN

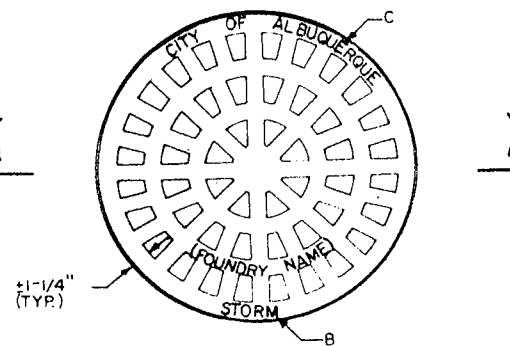


SOLID COVER (180 LB.)

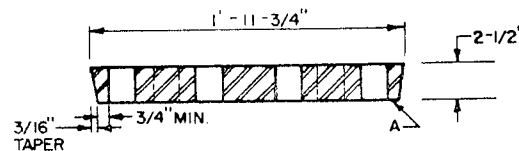


FRAME

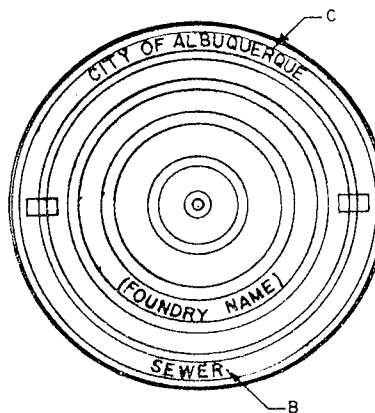
SECTION X-X



PLAN



SECTION Y-Y
VENTED COVER (135 LB.)



LETTERING PLAN

GENERAL NOTES:

1. STANDARD CAST IRON M.H. FRAME AND COVER WEIGHTS: COVER = 180 LBS., FRAME = 145 LBS. TOTAL = 325 LBS. (TOLERANCE = $\pm 5\%$)
2. REFERENCE SPEC. SECTION 130.

CONSTRUCTION NOTES:

- A. MACHINED OR GROUND BEARING SURFACES.
- B. "SEWER", "WATER", OR "STORM" CAST ON COVER TO IDENTIFY SANITARY SEWER, WATER OR STORM DRAINAGE SYSTEMS RESPECTIVELY.
- C. LETTER SIZE TO BE 1" MIN. IN HEIGHT, TYPICAL.
- D. VENT HOLE REQUIRED.
- E. MONOLITHIC CAST IRON OR STEEL ROD INSERTS AT MANUFACTURER'S OPTION. IF INSERT IS PROVIDED IT MUST HAVE 3/16" MIN. COVER AND 3/4" END EMBEDMENT IN CASTING.
- F. GUSSETS OPTIONAL IF REQUIRED BY MANUFACTURER.

CITY OF ALBUQUERQUE	
SEWER	
MANHOLE FRAME AND COVERS	
DWG. 2110	
AUG. 1986	
REVISIONS	