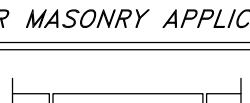
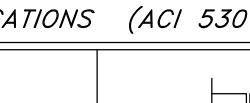




Designed by: KR
Drafted by: AM
Client Name: Smith's Food & Drug
SMC485-DT

Details
<p>Smith's #485 Fuel Center 6941 Montgomery Blvd. Albuquerque, NM</p>

2009 IBC REBAR LAP SPLICE SCHEDULE
FOR MASONRY APPLICATIONS (ACI 530 - 05) (USING f'm = 1500 PSI)

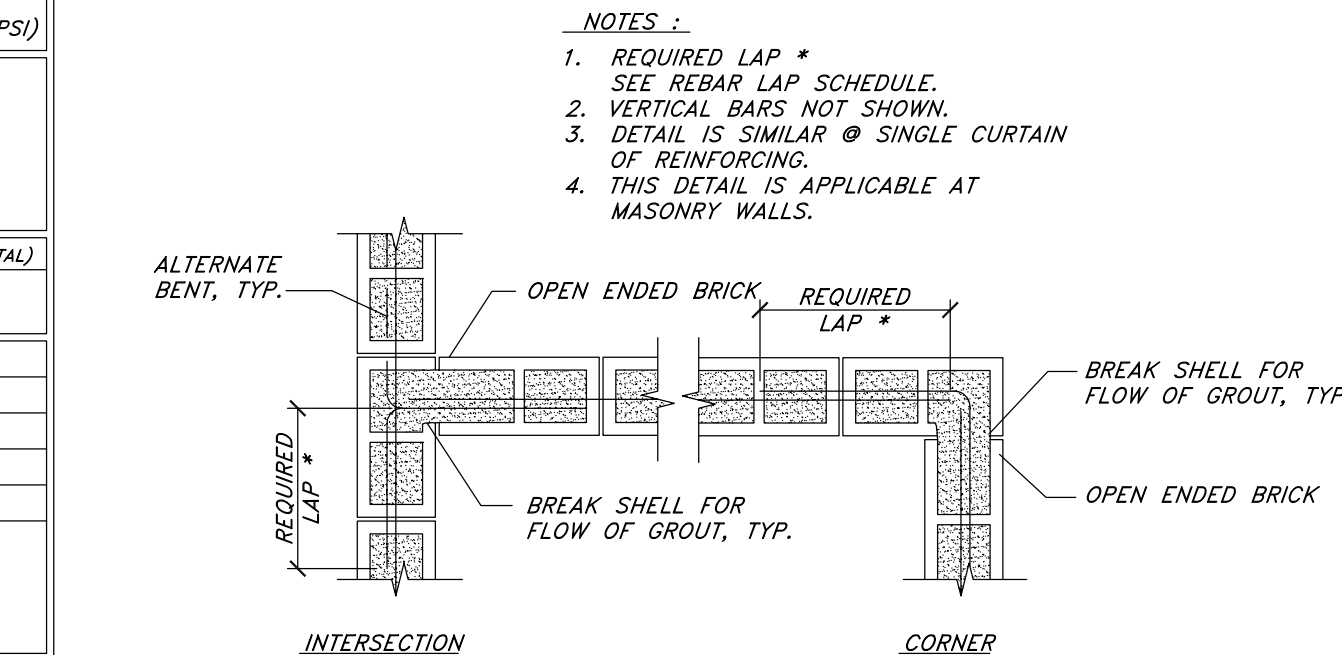



(POSSIBLE APPLICATIONS)

(1) BAR AT C OF WALL (VERT. OR HORIZ.)			BARS AT EACH FACE OF WALL (VERTICAL OR HORIZONTAL)		
BAR SIZE		6" WALL	BAR SIZE		6" WALL
NO.	DIA.		NO.	DIA.	
4	0.500	20"	4	0.500	29"
5	0.625	25"	5	0.625	45"
6	0.750	43"	6	0.750	54"

NOTES:

- MECHANICAL COUPLERS ARE REQUIRED FOR BARS IN MASONRY AS NOTED IN THE SCHEDULE.
- MECHANICAL COUPLERS MAY BE USED IN LIEU OF LAP SPLICES SHOWN IN SCHEDULE.
- SEE STRUCTURAL NOTES FOR MINIMUM COUPLER CAPACITIES.



(3) VERT. BARS MIN. SIZE TO MATCH VERT. REINFORCING IN MASONRY. TYP. AT CORNERS

(4) VERT. BARS MIN. SIZE TO MATCH VERT. REINFORCING IN MASONRY. TYP. AT INTERSECTIONS

CORNER

INTERSECTION

NOTES:
 1. ALL VERTICAL REINFORCING SHALL HAVE MATCHING DOWELS CAST INTO FOUNDATIONS / FOOTINGS.
 2. HORIZONTAL REINFORCEMENT NOT SHOWN FOR CLARITY.
 3. TYPICAL WALL VERTICAL REINFORCING NOT SHOWN - SEE PLAN FOR SIZE & SPACING.

Details

Smith's #485 F
6941 Montgomery
Albuquerque,

Screen & Dumpster Wall
Not to Scale



#485
Albuquerque, New Mexico

