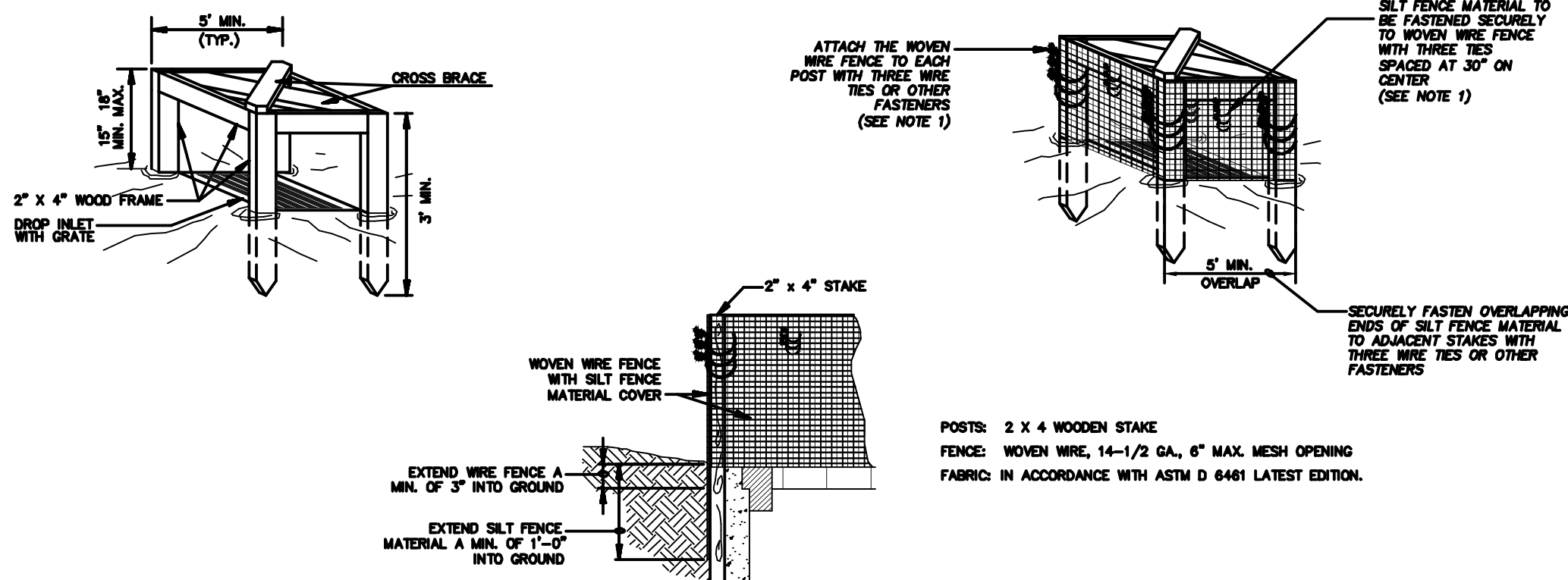


1. WOVEN WIRE FENCE TO BE FASTENED SECURELY TO FENCE POSTS WITH WIRE TIES.
2. GEOTEXTILE TO BE FASTENED SECURELY TO WOVEN WIRE FENCE WITH TIES SPACED EVERY 24\"/>

SEDIMENTATION/SILT FENCE WITH WIRE SUPPORT (SF)
N.T.S.

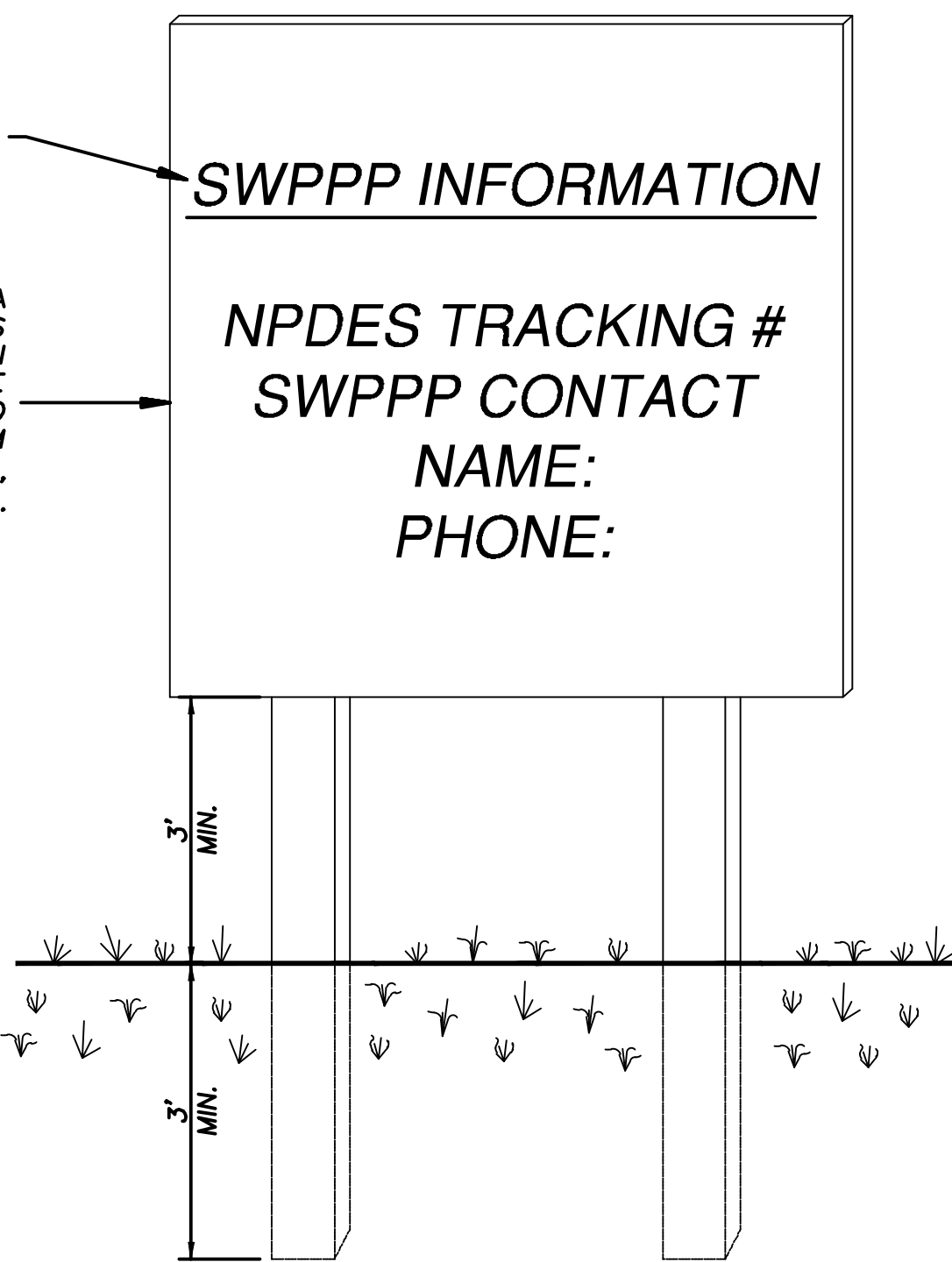


1. ATTACH THE WOVEN WIRE FENCE TO EACH POST AND THE GEOTEXTILE TO THE WOVEN WIRE FENCE (SPACED EVERY 30\"/>

SILT FENCE INLET PROTECTION (IP6)
N.T.S.

"SWPPP INFORMATION" MUST BE DISPLAYED PROMINENTLY ACROSS THE TOP OF THE SIGN, AS SHOWN IN THE DETAIL.

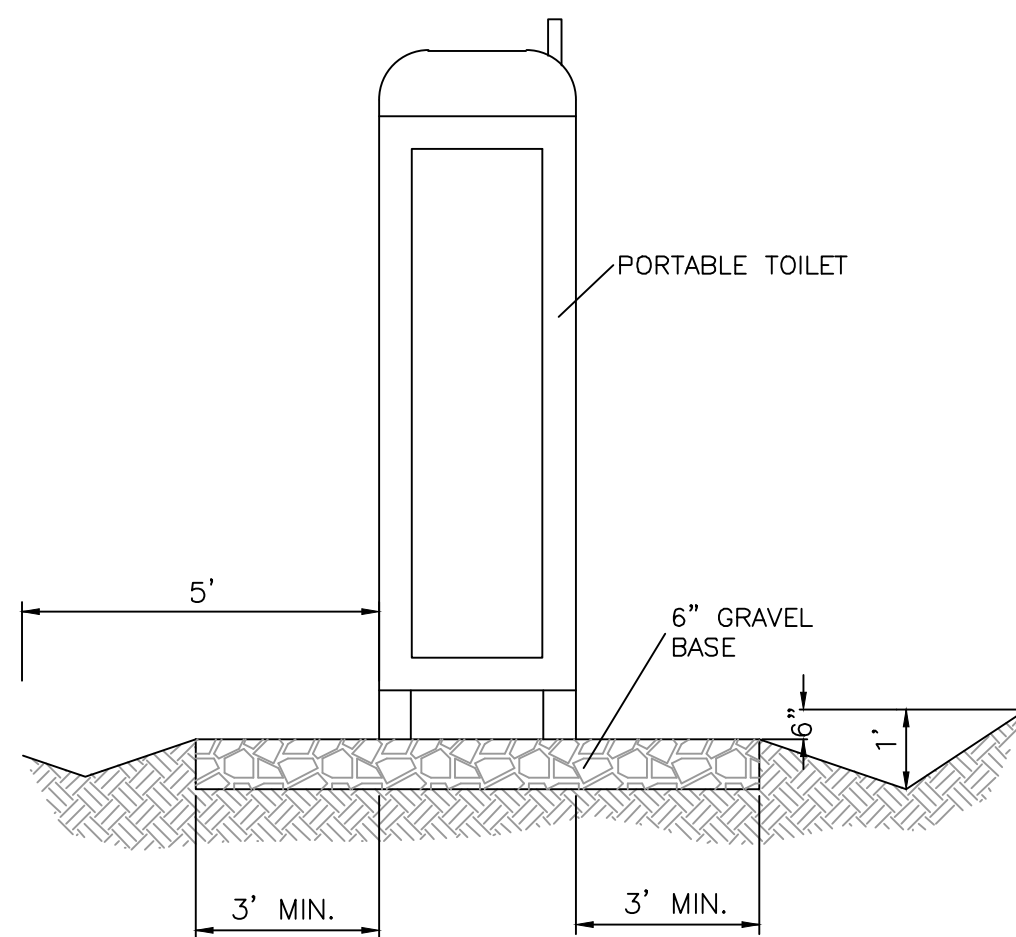
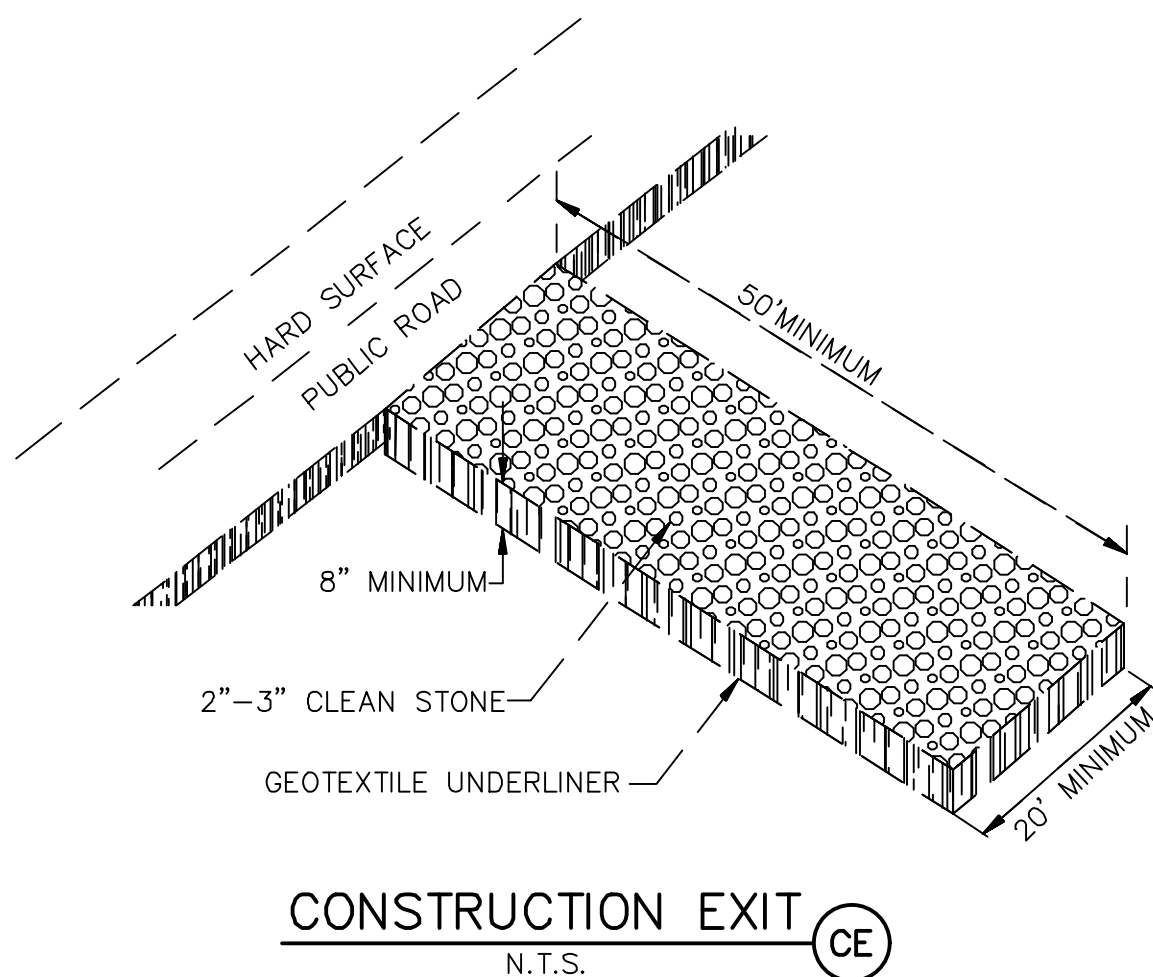
SIGN TO BE CONSTRUCTED OF A RIGID MATERIAL, SUCH AS PLYWOOD OR OUTDOOR SIGN BOARD. SIGN MUST BE CONSTRUCTED IN A MANNER TO PROTECT DOCUMENTS FROM DAMAGE DUE TO WEATHER (WIND, SUN, MOISTURE, ETC.).



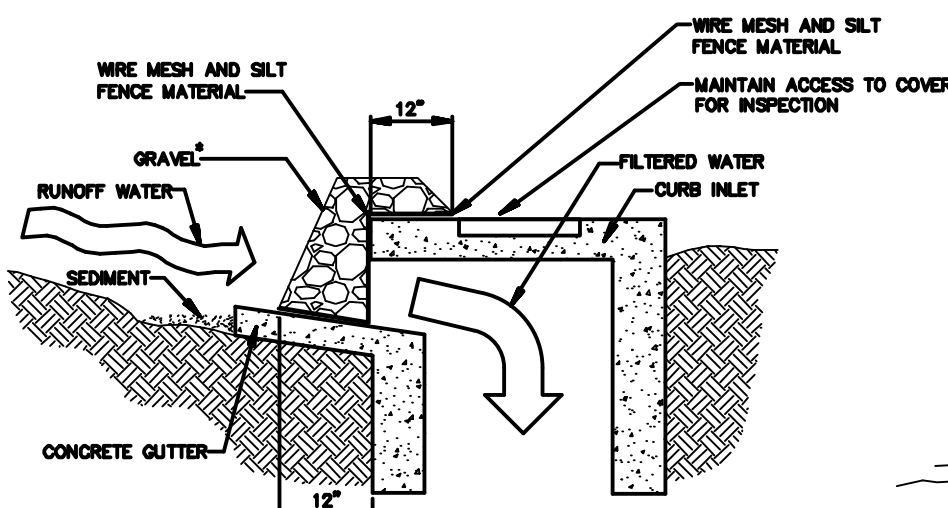
NOTES:

- 1) SWPPP PUBLIC INFORMATION SIGN MUST BE POSTED CONSPICUOUSLY AT A SAFE, PUBLICLY ACCESSIBLE LOCATION AT THE PRIMARY ENTRANCE TO THE PROJECT SITE.
- 2) THE PUBLIC INFORMATION SIGN MUST INCLUDE THE TITLE 'SWPPP INFORMATION'; THE NMR TRACKING NUMBER, SITE CONTACT NAME AND PHONE NUMBER.
- 3) THE NOTICE MUST BE LOCATED SO THAT IT IS VISIBLE FROM THE PUBLIC ROAD AND LARGE ENOUGH TO BE READILY VIEWED FROM THE PUBLIC RIGHT-OF-WAY.
- 4) THE NOTICE MUST BE MAINTAINED THROUGHOUT THE CONSTRUCTION DURATION UNTIL A NOT IS FILED.

SWPPP INFORMATION SIGN (SS)
N.T.S.



PORTABLE TOILET CONTAINMENT DETAIL



THIS METHOD OF INLET PROTECTION IS APPLICABLE AT CURB INLETS WHERE PONDING IN FRONT OF THE STRUCTURE IS NOT LIKELY TO CAUSE INCONVENIENCE OR DAMAGE TO ADJACENT STRUCTURES AND UNPROTECTED AREAS.
* GRAVEL SHALL BE 3/4\"/>

GRAVEL CURB INLET SEDIMENT FILTER (P5)
N.T.S.

ENGINEER'S SEAL	LOS PASTORES SHOPPING CENTER	DRAWN BY DY
		DATE 4/20/16
	TEMPORARY EROSION CONTROL AND SEDIMENTATION DETAILS	2014052-SWPPP
		SHEET # EC-2
RONALD R. BOHANNAN P.E. #7868	 TIERRA WEST, LLC 5571 MIDWAY PARK PLACE NE ALBUQUERQUE, NM 87109 (505) 858-3100 www.tierrawestllc.com	JOB # 2014052