

# CITY OF ALBUQUERQUE



*Planning Department*  
Suzanne Lubar, Director

*Mayor Richard J. Berry*

February 26, 2016

David Soule, PE  
Rio Grande Engineering  
1606 Central SE Suite 201  
Albuquerque, NM 87106

**RE: Sandia Area Federal Credit Union  
11301 Montgomery NE  
Requested for 30 Day Temporary C. O. - Accepted  
Engineers Stamp Date 7/1/15 (F22D002)  
Certification dated: 2-23-16**

Dear Mr. Soule,

PO Box 1293

Based on the certification provided in your submittal received 2/23/2016, the above referenced is approved for a 30-day Temporary Release of Occupancy by Hydrology.

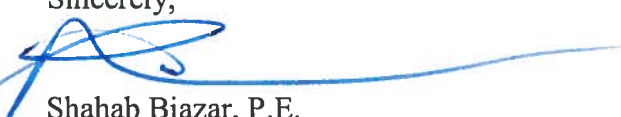
Albuquerque

If you have any questions, you can contact me at 924-3999 or Totten Elliott at 924-3982.

New Mexico 87103

Sincerely,

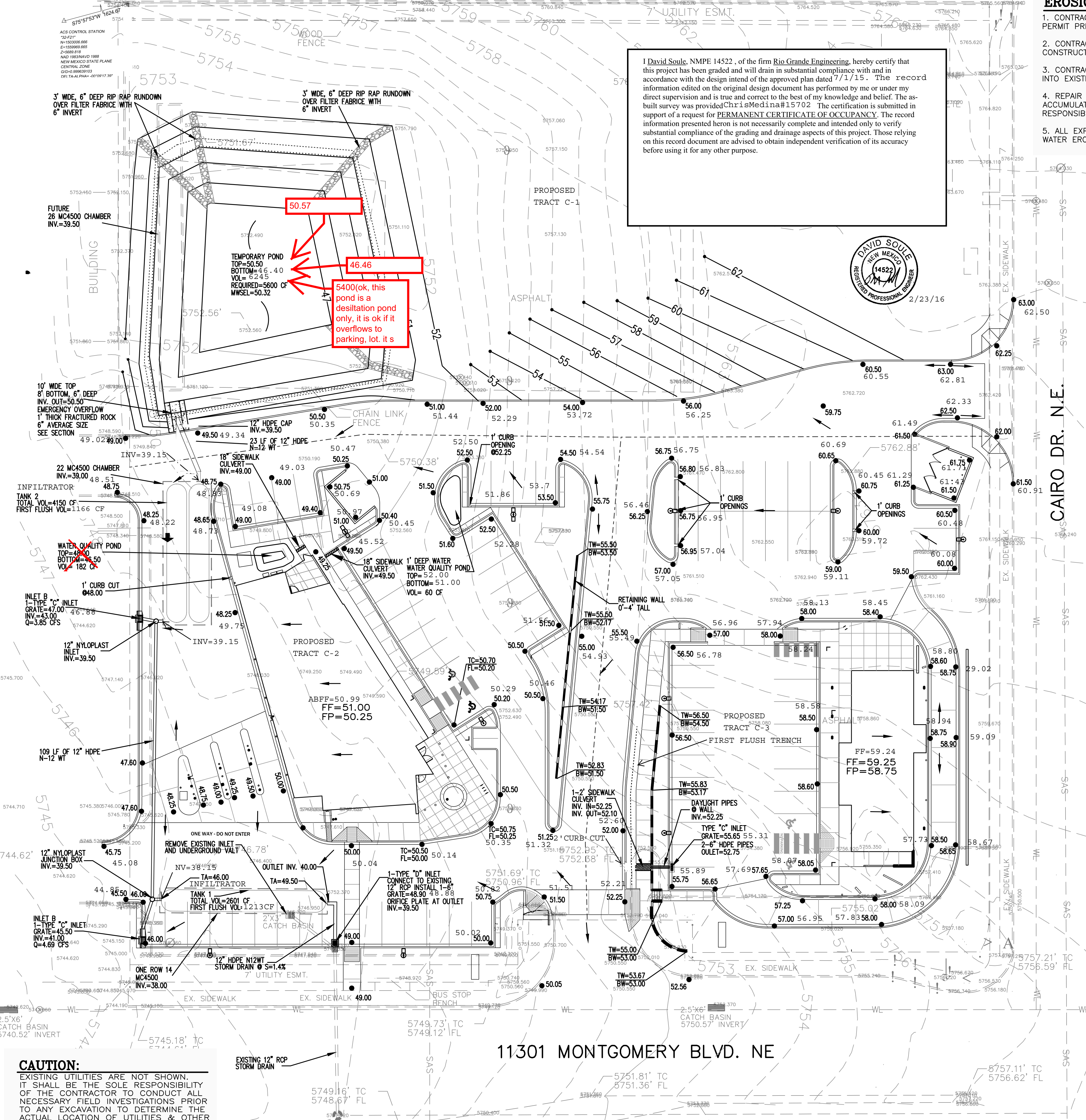
[www.cabq.gov](http://www.cabq.gov)

  
Shahab Biazar, P.E.  
City Engineer, Planning Dept.  
Development Review Services

TE/SB

C: email, Cordova, Camille C.; Miranda, Rachel; Sandoval, Darlene M.; Blocker, Lois



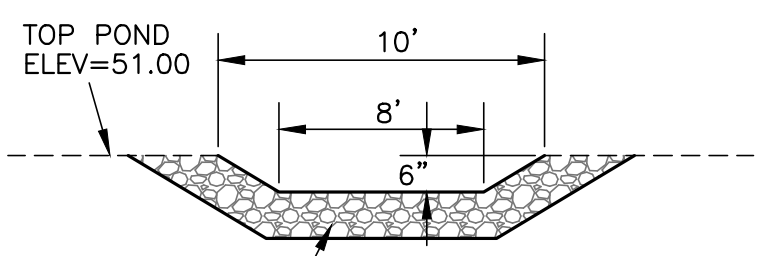
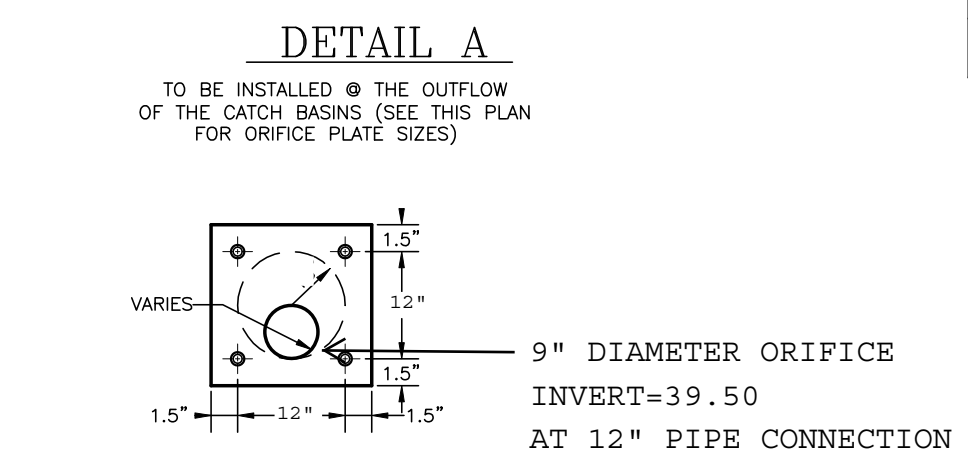
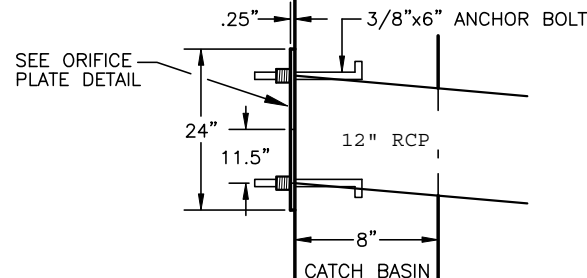
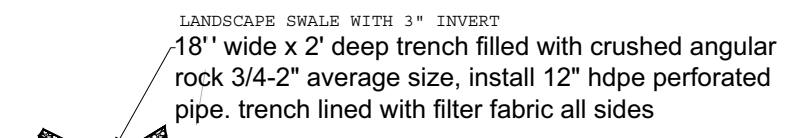


I David Soule, NMPE 14522, of the firm Rio Grande Engineering, hereby certify that this project has been graded and will drain in substantial compliance with and in accordance with the design intent of the approved plan dated 7/1/15. The record information edited on the original design document has been performed by me or under my direct supervision and is true and correct to the best of my knowledge and belief. The as-built survey was provided by Chris Medina #15702. The certification is submitted in support of a request for PERMANENT CERTIFICATE OF OCCUPANCY. The record information presented herein is not necessarily complete and intended only to verify substantial compliance of the grading and drainage aspects of this project. Those relying on this record document are advised to obtain independent verification of its accuracy before using it for any other purpose.

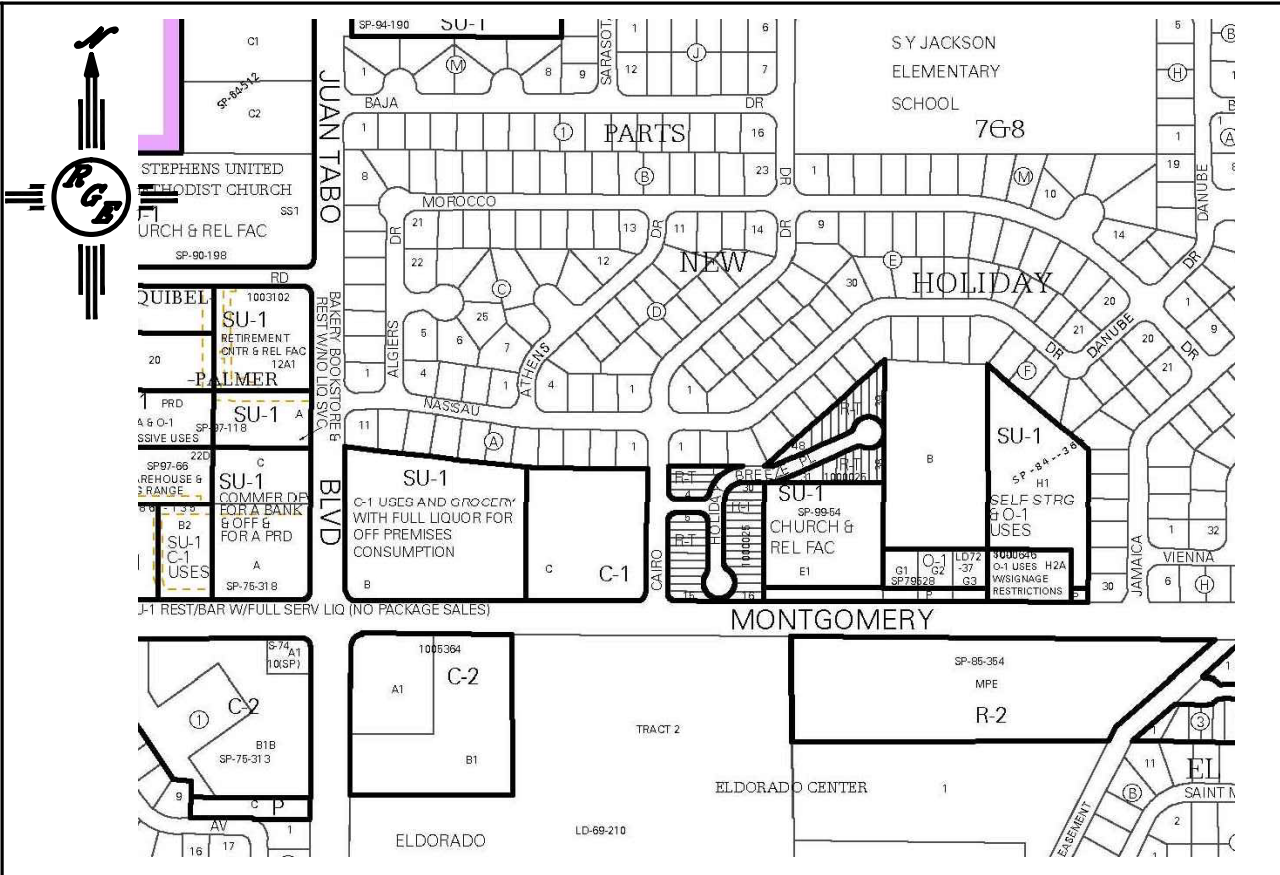
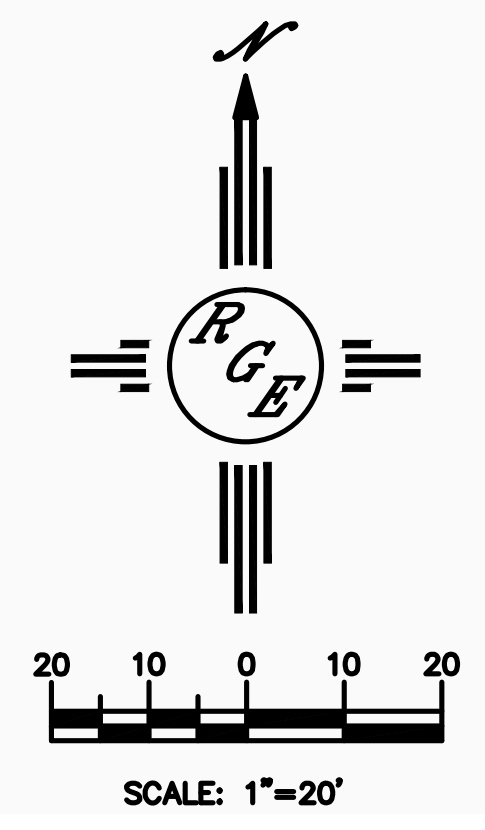


**EROSION CONTROL NOTES:**

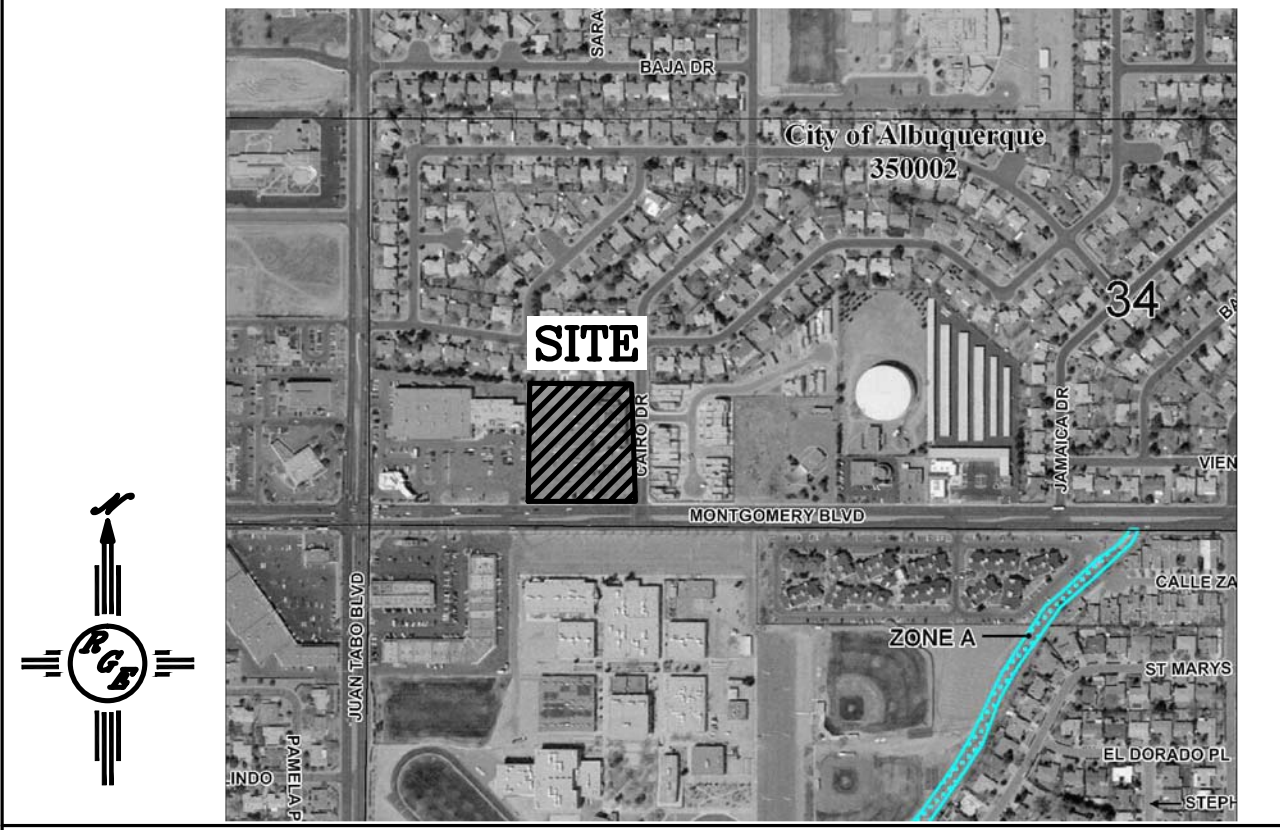
1. CONTRACTOR IS RESPONSIBLE FOR OBTAINING A TOPSOIL DISTURBANCE PERMIT PRIOR TO BEGINNING WORK.
2. CONTRACTOR IS RESPONSIBLE FOR MAINTAINING RUN-OFF ON SITE DURING CONSTRUCTION.
3. CONTRACTOR IS RESPONSIBLE FOR CLEANING ALL SEDIMENT THAT GETS INTO EXISTING RIGHT-OF-WAY.
4. REPAIR OF DAMAGED FACILITIES AND CLEANUP OF SEDIMENT ACCUMULATIONS ON ADJACENT PROPERTIES AND IN PUBLIC FACILITIES IS THE RESPONSIBILITY OF THE CONTRACTOR.
5. ALL EXPOSED EARTH SURFACES MUST BE PROTECTED FROM WIND AND WATER EROSION PRIOR TO FINAL ACCEPTANCE OF ANY PROJECT.



**OVERFLOW CROSS SECTION**  
NTS



**VICINITY MAP:** F-22-Z



**FIRM MAP:** 35001C0144G

**LEGAL DESCRIPTION:**

TRACT C, THE NEW HOLIDAY PARK SUBDIVISION  
CITY OF ALBUQUERQUE  
BERNALLILLO COUNTY, NEW MEXICO

**NOTES:**

1. ALL SPOT ELEVATIONS REPRESENT FLOWLINE ELEVATION UNLESS OTHERWISE NOTED.
2. UNDERGROUND WATER RETENTION SYSTEM SHALL BE STORM TECH MC4500.00
3. ALL STORM DRAIN PIPES SHALL BE 12" HDPE N-12WT

**LEGEND**

- 5601 — EXISTING CONTOUR
- 5600 — EXISTING INDEX CONTOUR
- 5601 — PROPOSED CONTOUR
- 5600 — PROPOSED INDEX CONTOUR
- LOT LINE
- CENTERLINE
- RIGHT-OF-WAY
- EXTENDED STEM WALL SEE ARCH PLANS FOR DETAILS
- PROPOSED ROCK FACE WALL
- EXISTING CURB AND GUTTER
- PROPOSED EDGE OF CONCRETE
- PROPOSED FLOWLINE
- EXISTING WALL

**CAUTION:**  
EXISTING UTILITIES ARE NOT SHOWN. IT SHALL BE THE SOLE RESPONSIBILITY OF THE CONTRACTOR TO CONDUCT ALL NECESSARY FIELD INVESTIGATIONS PRIOR TO ANY EXCAVATION TO DETERMINE THE ACTUAL LOCATION OF UTILITIES & OTHER IMPROVEMENTS.

	<b>Safca &amp; Starbuc</b> GRADING AND DRAINAGE PLAN	DRAWN BY DEM DATE 8-14 Safca & Starbuc 000 Planning
	Rio Grande Engineering 1608 CENTRAL AVENUE SUITE 201 ALBUQUERQUE, NM 87108 (505) 872-0888	SHEET # 1 of 2 JOB # XXXXX
6-29-15 7/1/15 DAVID SOULE P.E. #14522		