

CITY OF ALBUQUERQUE

Planning Department
Alan Varela, Director



Mayor Timothy M. Keller

April 30, 2024

Scott Anderson, RA
Scott C. Anderson & Associates Architects
2818 4th St NW, Suite C
Albuquerque, NM 87107

**Re: Solis Warehouse
3050 Todos Santos St NW
Site Plan
Architect's Stamp 2-8-24, Plan Approval Date 4-30-24 (G10D029K)**

Dear Mr. Anderson,

The Site Plan submittal received 4-30-2024 is approved for Building Permit by Transportation. **This plan supersedes the previously approved plan. The landscape area north of the parking increased in size.** This will be the plan to as-built when the project is complete.

As it is a minor change you are not required to upload it for Building Permit approval, but it may help as it will agree with the plan submitted to Code Enforcement.

PO Box 1293

Redline any minor changes and adjustments that were made in the field. A NM registered architect or engineer must stamp, sign, and date the certification TCL along with indicating that the development was built in "substantial compliance" with the TCL. Submit this certification, the TCL, and a completed Drainage and Transportation Information Sheet to the PLNDRS@cabq.gov for log in and evaluation by Transportation.

Albuquerque

NM 87103

Once verification of certification is completed and approved, notification will be made to Building Safety to issue Final C.O. To confirm that a final C.O. has been issued, call Building Safety at 924-3690.

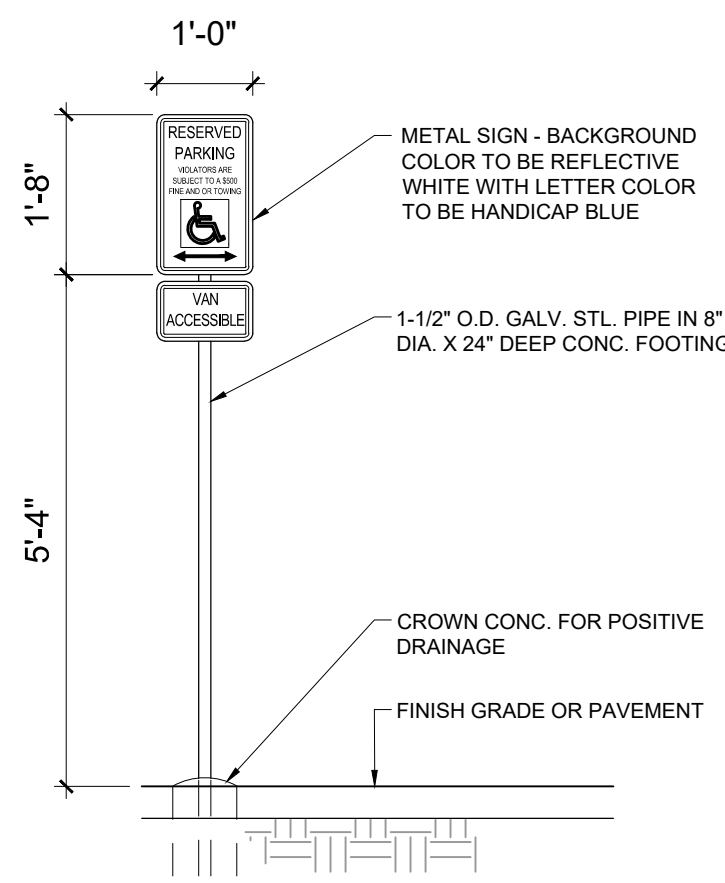
www.cabq.gov

Sincerely,

Curtis A Cherne

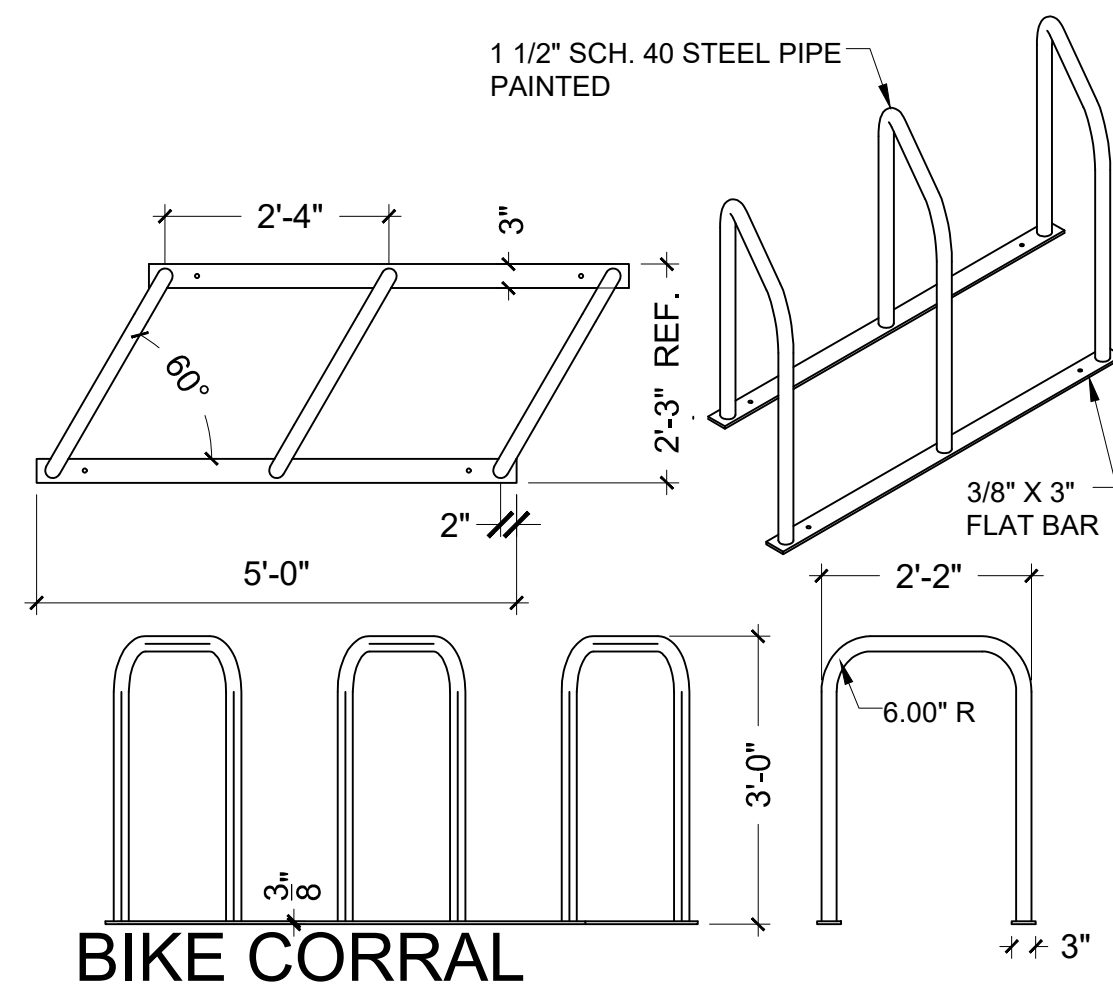
Curtis Cherne, P.E.
Senior Engineer, Planning Dept.
Development Review Services

C: File



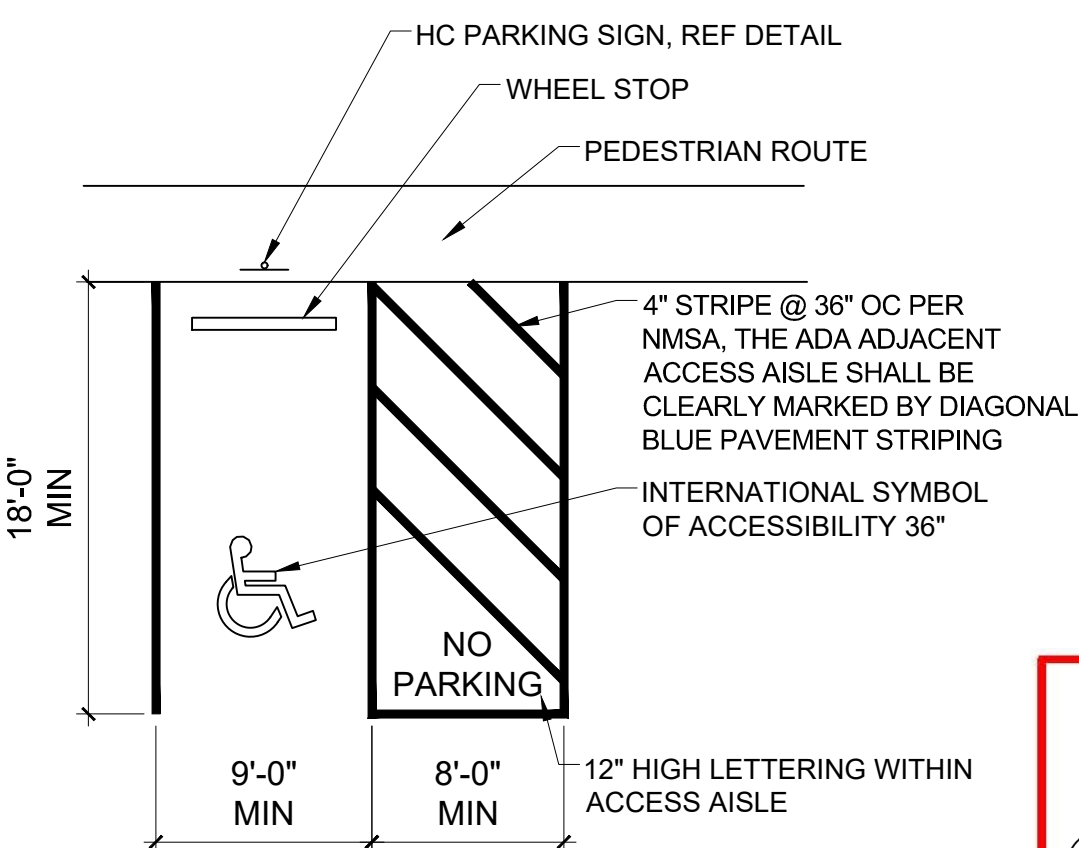
HC SIGN

SCALE: NTS



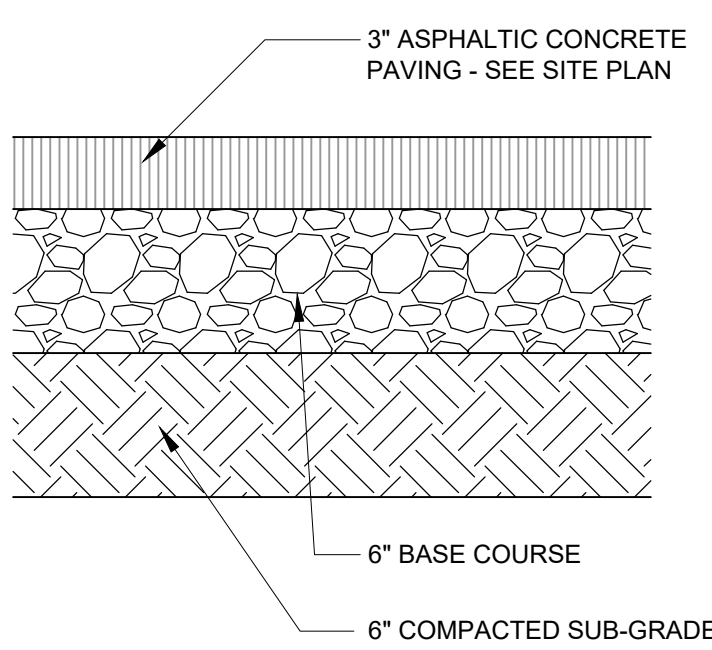
BIKE CORRAL

SCALE: 1/2" = 1'-0"



ADA PARKING

SCALE: 3/8" = 1'-0"



PAVING SECTION

SCALE: NTS

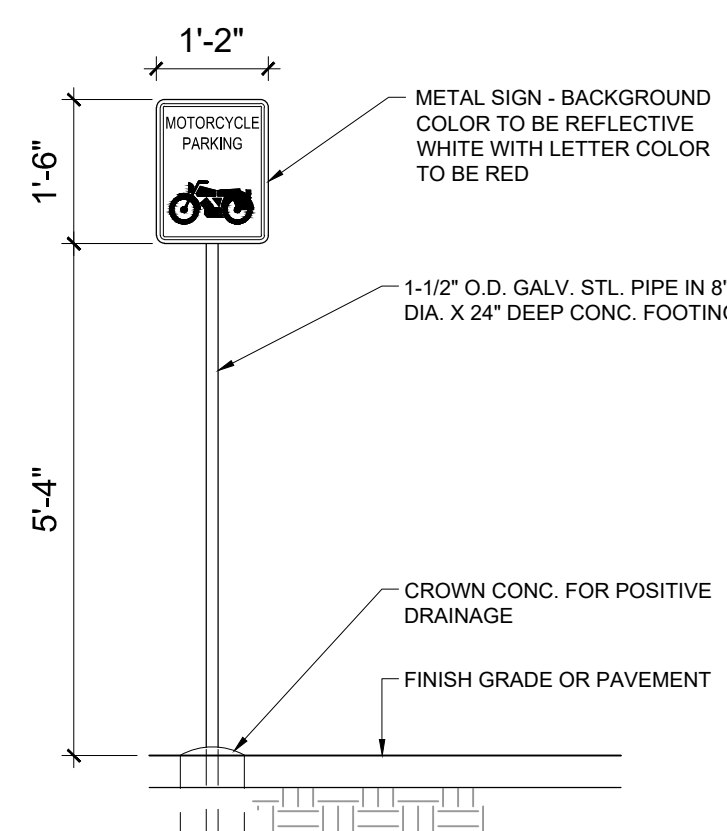


SITE PLAN

SCALE: 1" = 20'-0"

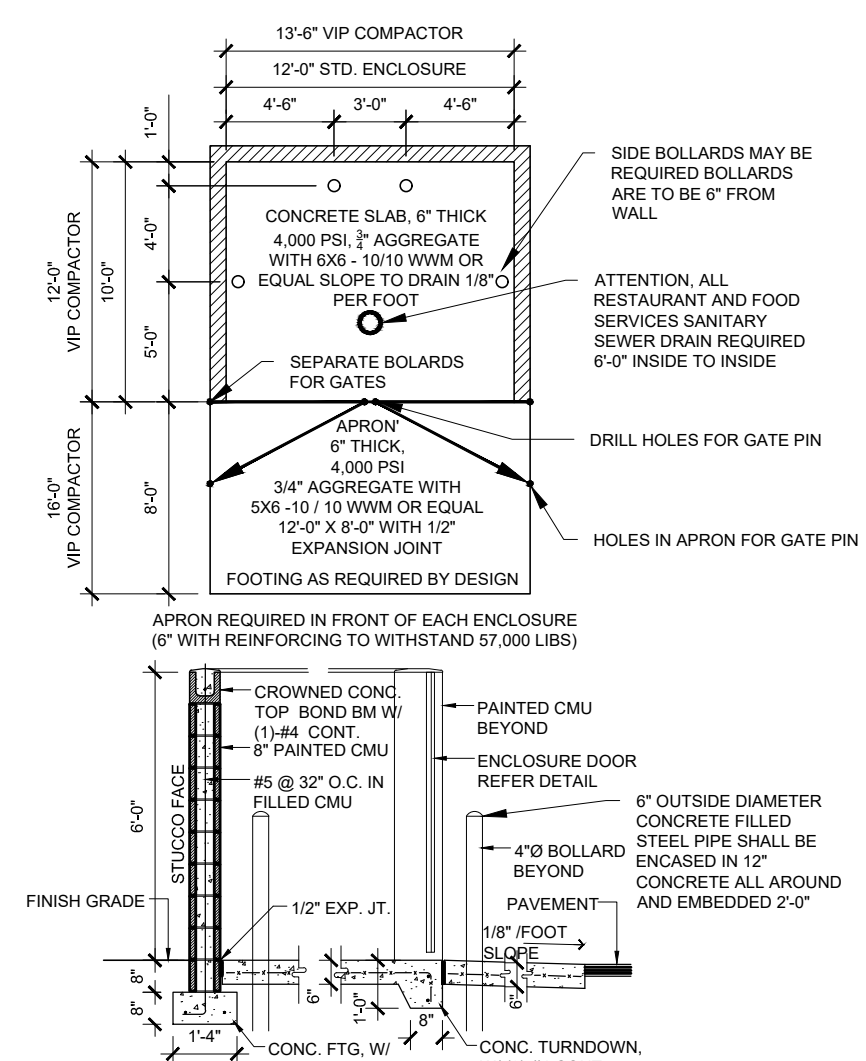
TRAFFIC CIRCULATION LAYOUT APPROVED

Curtis A. Cherna 4-30-24
Signed Date



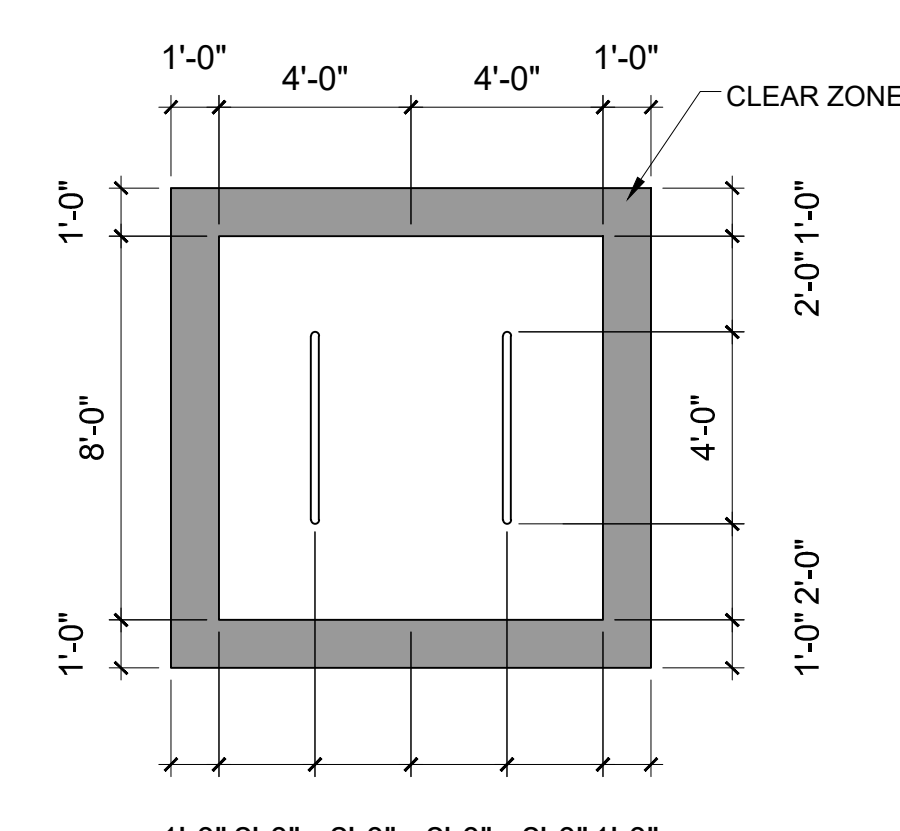
MOTORCYCLE SIGN

SCALE: 1/2" = 1'-0"



RECYCLING ENCLOSURE

SCALE: 1/8" = 1'-0"



BIKE PARKING

SCALE: 1/4" = 1'-0"

NOTE:
LANDSCAPING, FENCING AND SIGNING WILL NOT INTERFERE WITH CLEAR SIGHT REQUIREMENTS. THEREFORE, SIGNS, WALLS, TREES AND SHRUBBERY BETWEEN 3 AND 8 FEET TALL (AS MEASURED FROM THE GUTTER PAN) WILL NOT BE ACCEPTABLE IN THE CLEAR SIGHT TRIANGLE.
ALL PAVING SHALL BE ASPHALT UNLESS NOTED OTHERWISE, REF. DETAIL THIS SHEET.
ALL MECHANICAL EQUIPMENT SHALL BE SCREENED IN ACCORDANCE WITH IDO SECTION 5-5 (G).
ALL OUTDOOR LIGHT FIXTURES SHALL BE LED. FIXTURES 70 WATTS OR GREATER SHALL BE SHIELDED USING FULL CUTOFF LIGHT FIXTURES.
BUILDING MOUNTED SIGNS SHALL BE EXTERNALLY ILLUMINATED AND SHALL NOT EXTEND MORE THAN 2 FEET ABOVE THE EXTERIOR WALLS OF THE BUILDING.
WORK WITHIN THE PUBLIC RIGHT OF WAY REQUIRES A WORK ORDER.
PROVIDE ELECTRIC VEHICLE CHARGER AT EACH BAY OF LEASED GARAGES
SITE LIGHTING WILL BE PROVIDED BY LIGHT BOLLARDS AND WALL MOUNTED FIXTURES AND SHALL COMPLY WITH 5-8 OF THE IDO
BROKEN OR CRACKED SIDEWALK IS TO BE REPLACED WITH NEW SIDEWALK PER COA STD DRAWING 2430

- KEYED NOTES
- NEW DRIVE CUT REF CITY OF ALBUQUERQUE STANDARD DETAIL 2426 FOLLOW PARALLEL RAMP DETAIL, NOTE DETAIL 2446 FOR DETECTABLE WARNING SURFACE.
 - 6 SPACE BIKE RACK, REF DETAIL THIS SHEET
 - MOTORCYCLE PARKING SIGN REF DETAIL THIS SHEET
 - H.C. PARKING SIGN, REF DETAIL ON THIS SHEET
 - EXISTING FIRE HYDRANT
 - NEW 8' SIDEWALK, 2% MAX CROSS SLOPE, 1.5% PREFERRED CROSS SLOPE, REFERENCE CITY OF ALBUQUERQUE STANDARD DETAIL 2430
 - HC PARKING SYMBOL
 - CURB AND GUTTER, REF COA DETAIL
 - EXISTING PROPERTY LINE
 - VEHICULAR GATE
 - EXISTING POWER POLE. NEW POWER POLES WILL BE AGAINST BACK OF CURB.
 - CLEAR SIGHT TRIANGLE. LANDSCAPING, FENCING AND SIGNING WILL NOT INTERFERE WITH CLEAR SIGHT REQUIREMENTS. THEREFORE, SIGNS, WALLS, TREES AND SHRUBBERY BETWEEN 3 AND 8 FT TALL (AS MEASURED FROM THE GUTTER PAN) WILL NOT BE ACCEPTABLE IN THE CLEAR SIGHT TRIANGLE
 - CURB RAMP, REFERENCE CITY OF ALBUQUERQUE STANDARD DETAIL 2441, NOTE DETAIL 2446 FOR DETECTABLE WARNING SURFACE
 - DRAINAGE EASEMENT
 - UTILITY EASEMENT
 - METAL FENCE
 - OVERHEAD UTILITY LINE
 - REFUSE CONTAINER, REF DETAIL THIS SHEET
 - CURB RAMP, REFERENCE CITY OF ALBUQUERQUE STANDARD DETAIL 2442, DRAWING A
 - CURB RAMP, REFERENCE CITY OF ALBUQUERQUE STANDARD DETAIL 2443, DRAWING A
 - IDO SETBACK LINE
 - ASPHALT PAVING
 - NATIVE SOIL, COMPACT TO 90%
 - FRONT DOOR
 - PARALLEL RAMP, REFERENCE CITY OF ALBUQUERQUE STANDARD DETAIL 2443

NOTE:
PROPERTY OWNER RESPONSIBLE FOR PLACING RECYCLING AT DESIGNATED COLLECTION POINT ON COLLECTION DAY.
PROPERTY OWNER RESPONSIBLE FOR PLACING REFUSE IN ENCLOSURE ON COLLECTION DAY
CABQ SOLID WASTE DEPARTMENT SHALL HAVE 24HR ACCESS TO THE SITE AND BE PROVIDED WITH KEYPAD GATE CONTROL TO ENTER THE SITE

PARKING:
LIGHT MANUFACTURING: 6,000 SF X 0.001 = 6 SPACES
8 PROVIDED

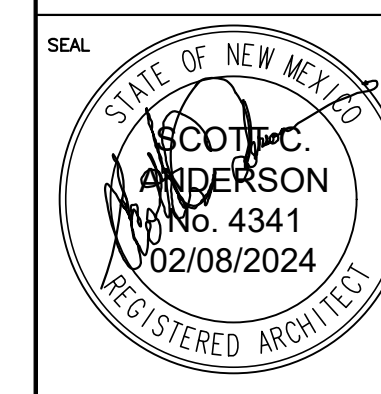
UPC: 101006016307631101
LEGAL: LOT 1 VOLCANO BUSINESS PARK PHASE I
ZONING: NR-BP
ZONE ATLAS PAGE: G-10
AREA: 1.2749 ACRES

No	Revision	Item	Date

SCOTT C. ANDERSON
& associates architects
2818 4th St NW, Suite C Albuquerque NM 87107
scott@scarchitects.com 505.401.7575

WAREHOUSE
3050 TODOS SANTOS ST NW
ALBUQUERQUE, NM 87120

DRAWING TITLE		SITE PLAN	
DESIGNED	PROJECT NO	DESIGNED	PROJECT NO
DRAWN	SCALE	DRAWN	SCALE
CHECKED	DRAWING NO	CHECKED	DRAWING NO
REVIEWED		REVIEWED	
DATE	02/28/2024	DATE	02/28/2024



A-100

Cherne, Curtis

From: Scott Anderson <scott@scaarchitects.com>
Sent: Tuesday, April 30, 2024 9:21 AM
To: Cherne, Curtis
Subject: Re: Solis Warehouse- G10D029K- Site Plan Approval
Attachments: A-100.pdf

[EXTERNAL] Forward to phishing@cabq.gov and delete if an email causes any concern.

Curtis, I neglected to have a 10ft landscape buffer on the north side of the site. To accommodate this requirement I moved the parking and building to the south, everything else remains the same. I am not sure if I need to make a formal re-submittal or if this email is sufficient. Please let me know

Thank you for your help

Scott

On Fri, Apr 12, 2024 at 2:17 PM Cherne, Curtis <CCherne@cabq.gov> wrote:

Scott,

Please see attached Site Plan approval letter and stamped plan from Transportation for the Solis Warehouse.



CURTIS CHERNE, P.E.

senior engineer
o 505.924.3986

e ccherne@cabq.gov

cabq.gov/planning

