

Bohannon Huston

November 15, 2016

Courtyard I
7500 Jefferson St. NE
Albuquerque, NM
87109-4335

www.bhinc.com

voice: 505.823.1000
facsimile: 505.798.7988
toll free: 800.877.5332

Mr. Stephen Dixon
Oxbow Bluff ACC Liaison
2317 Royene Ave NE
Albuquerque, NM 87110

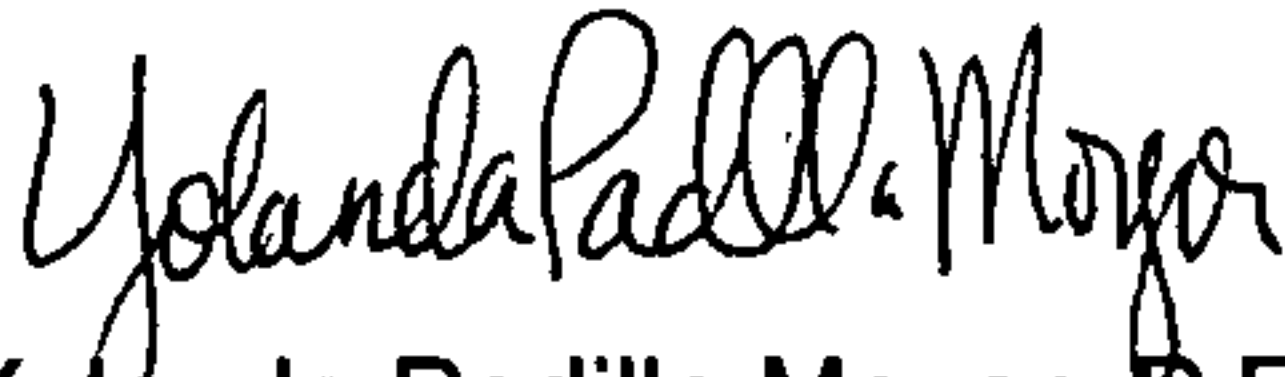
Re: Lot 58— Oxbow Bluff; 3rd and Final Review for Lot Specific Grading and Drainage Plan

Dear Stephen:

Based on the revised grading and drainage plan for the above referenced Lot stamped dated 11/14/16 by David Soule, Rio Grande Engineering, it appears that all the comments have been addressed in regards to the grading and drainage.

Please let me know if you have any comments or concerns.

Sincerely,



Yolanda Padilla Moyer, P.E.
Senior Project Manager
Community Development and Planning

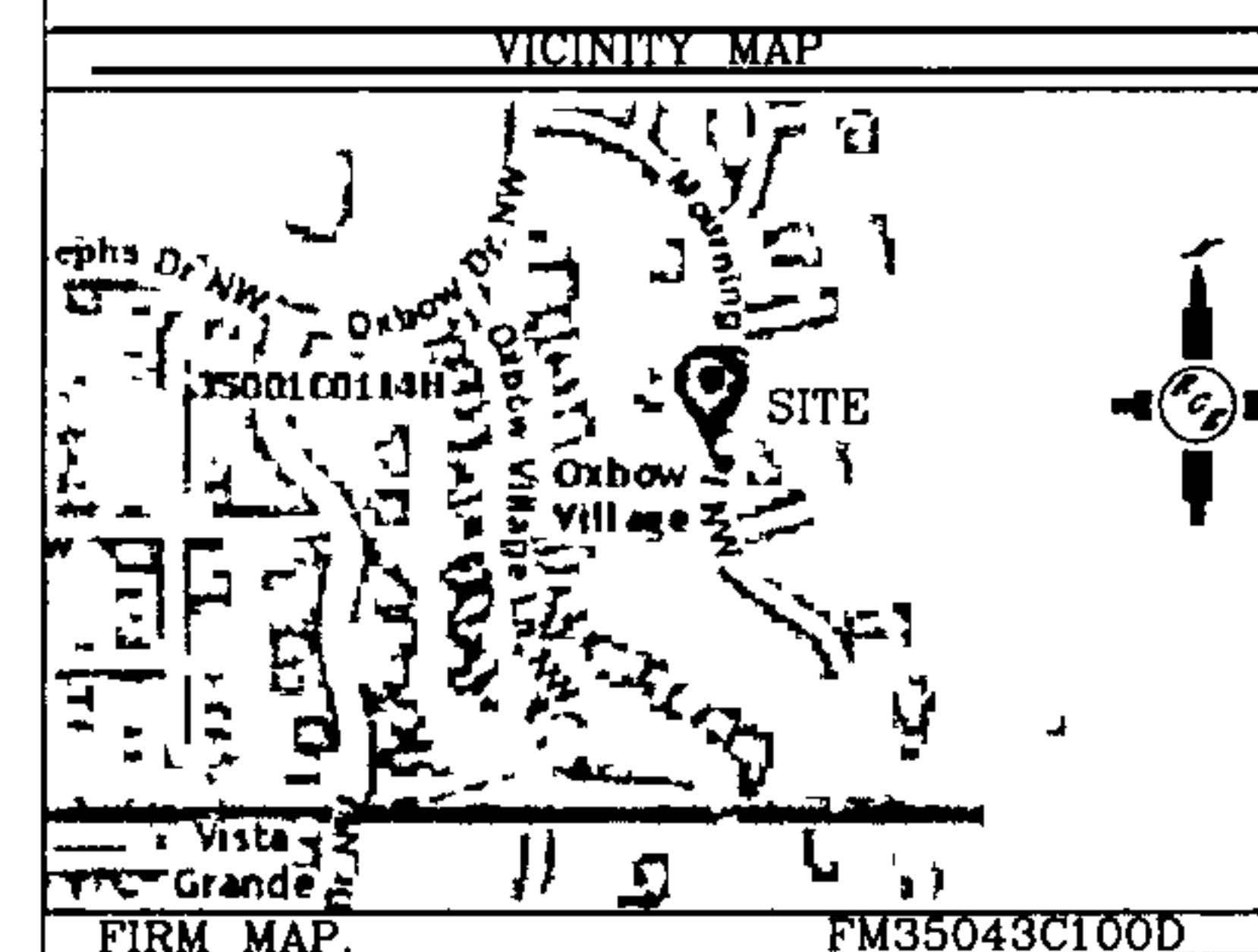
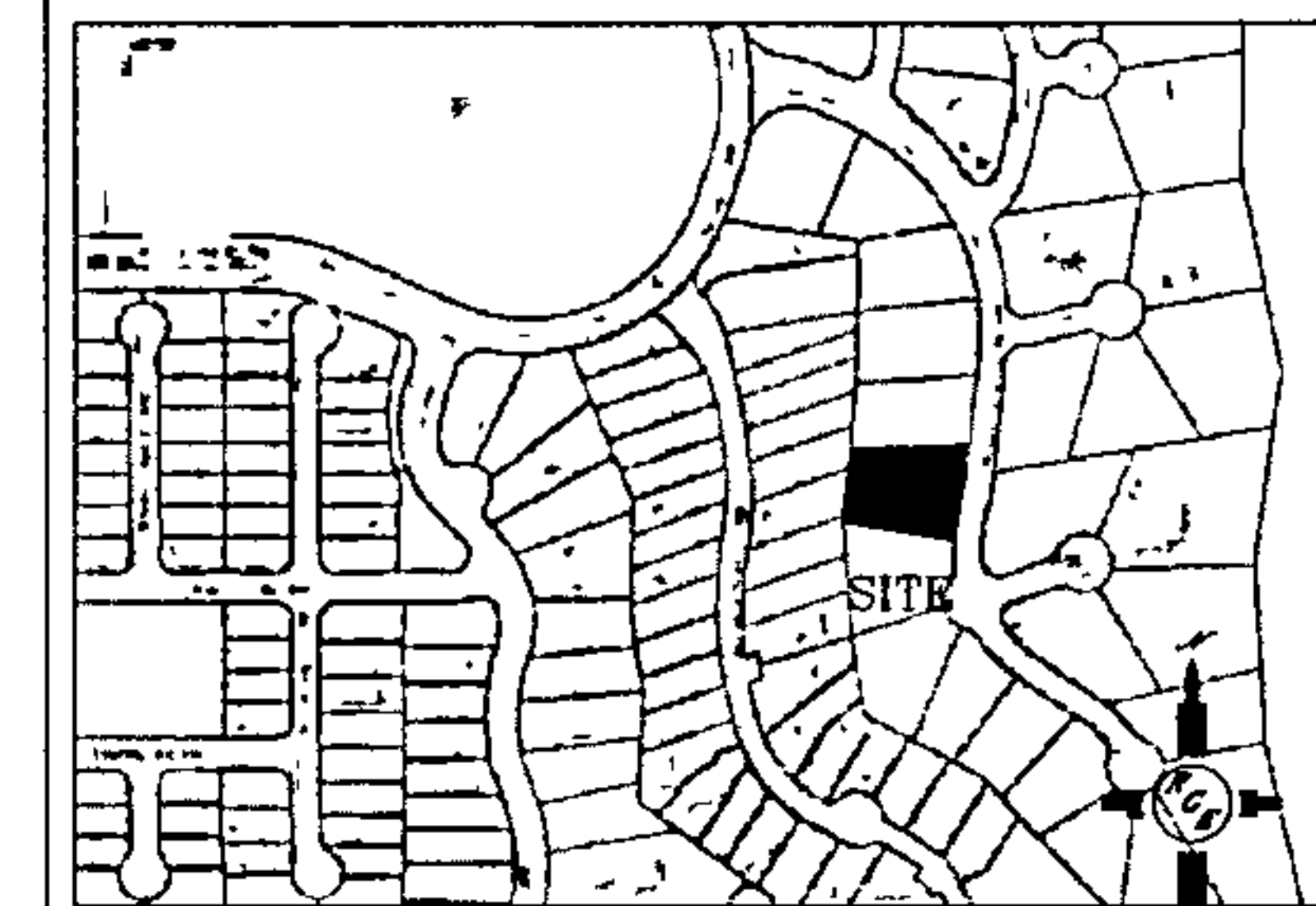
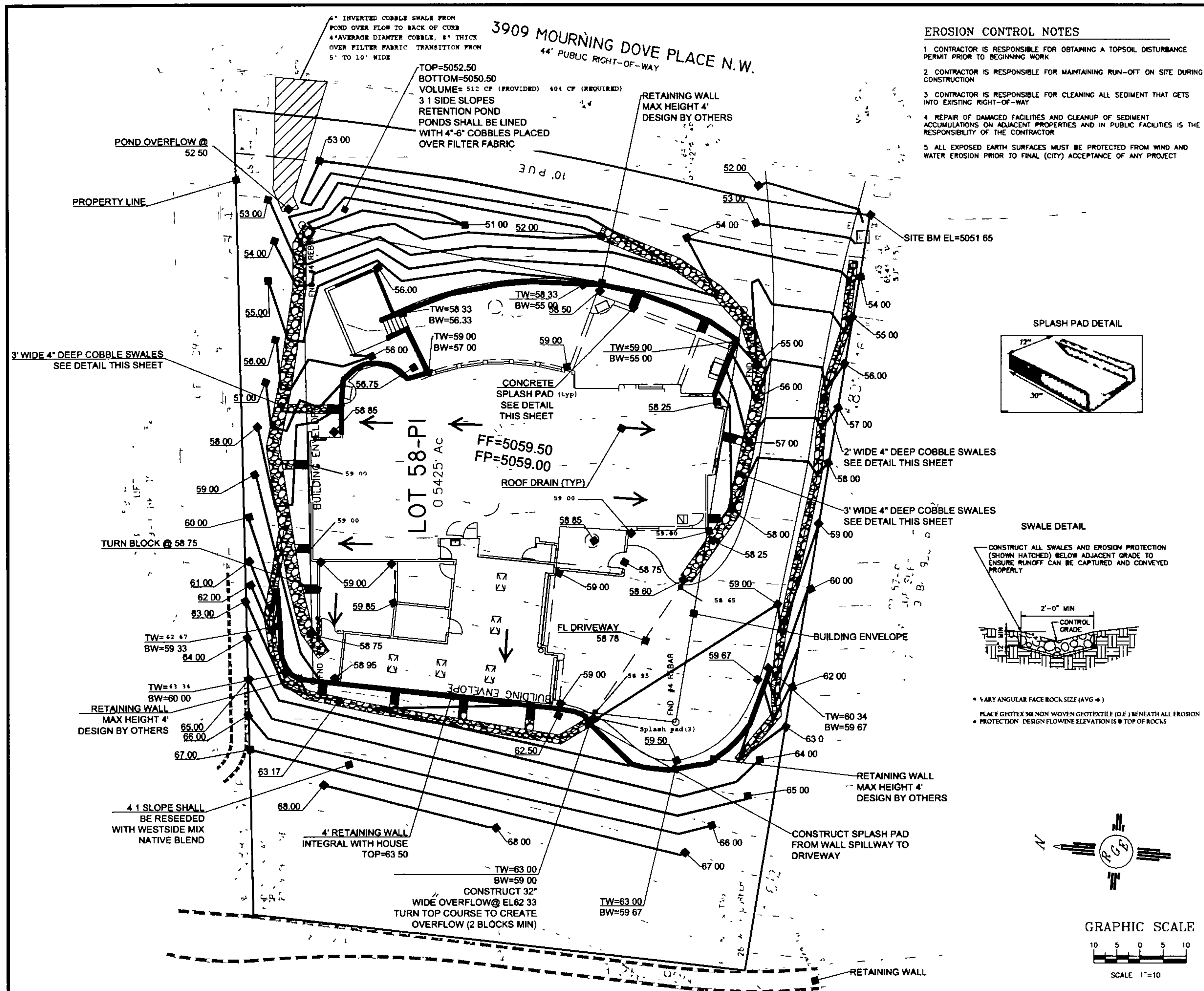
YPM/cc

cc: David Soule, Rio Grande Engineering
Abiel Carrillo, COA Hydrology

Engineering ▲

Spatial Data ▲

Advanced Technologies ▲



LEGAL DESCRIPTION


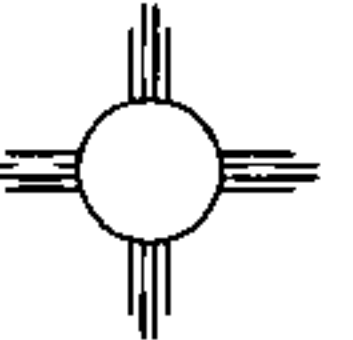
LOT 58-P-1 OXBOW

NOTES

1. ALL SPOT ELEVATIONS REPRESENT FLOWLINE ELEVATION UNLESS OTHERWISE NOTED
2. TOPOGRAPHIC SURVEY INFORMATION SHOWN ON THIS PLAN WAS OBTAINED BY OWNER
3. ALL DISTURBED AREAS MUST BE RESEED OR LANDSCAPED PRIOR TO FINAL C.O.
4. ALL AREAS OUTSIDE THE BUILDING ENVELOPE MUST BE RESEED WITH NATIVE MIX
5. DUE TO EXISTING TOPOGRAPHY AND NATURE OF THE AREA, PERIODIC MAINTENANCE OF PONDS AND SWALES ARE REQUIRED

LEGEND

- 5411 --- EXISTING CONTOUR
- 5410 --- EXISTING INDEX CONTOUR
- 5411 --- PROPOSED CONTOUR
- 5410 --- PROPOSED INDEX CONTOUR
- 100.00 PROPOSED FLOWLINE ELEVATIONS
- --- PROPERTY LINE

ENGINEER'S SEAL  DAVID SOULE P.E. #14522	LOT 58-P1 OXBOW GRADING AND DRAINAGE PLAN  Rio Grande Engineering 1808 CENTRAL AVENUE SE SUITE 201 ALBUQUERQUE, NM 87106 (505) 872-0000	DRAWN BY JDC DATE 11-05-2016 SHEET # 1 OF 1 JOB #
----------------------------------------------------------------------------------------------------------------------------------------	----------------------------------------------------------------------------------------------------------------------------------------------------------------------------------------------------------------------------------------------------------------------------	-----------------------------------------------------------------------