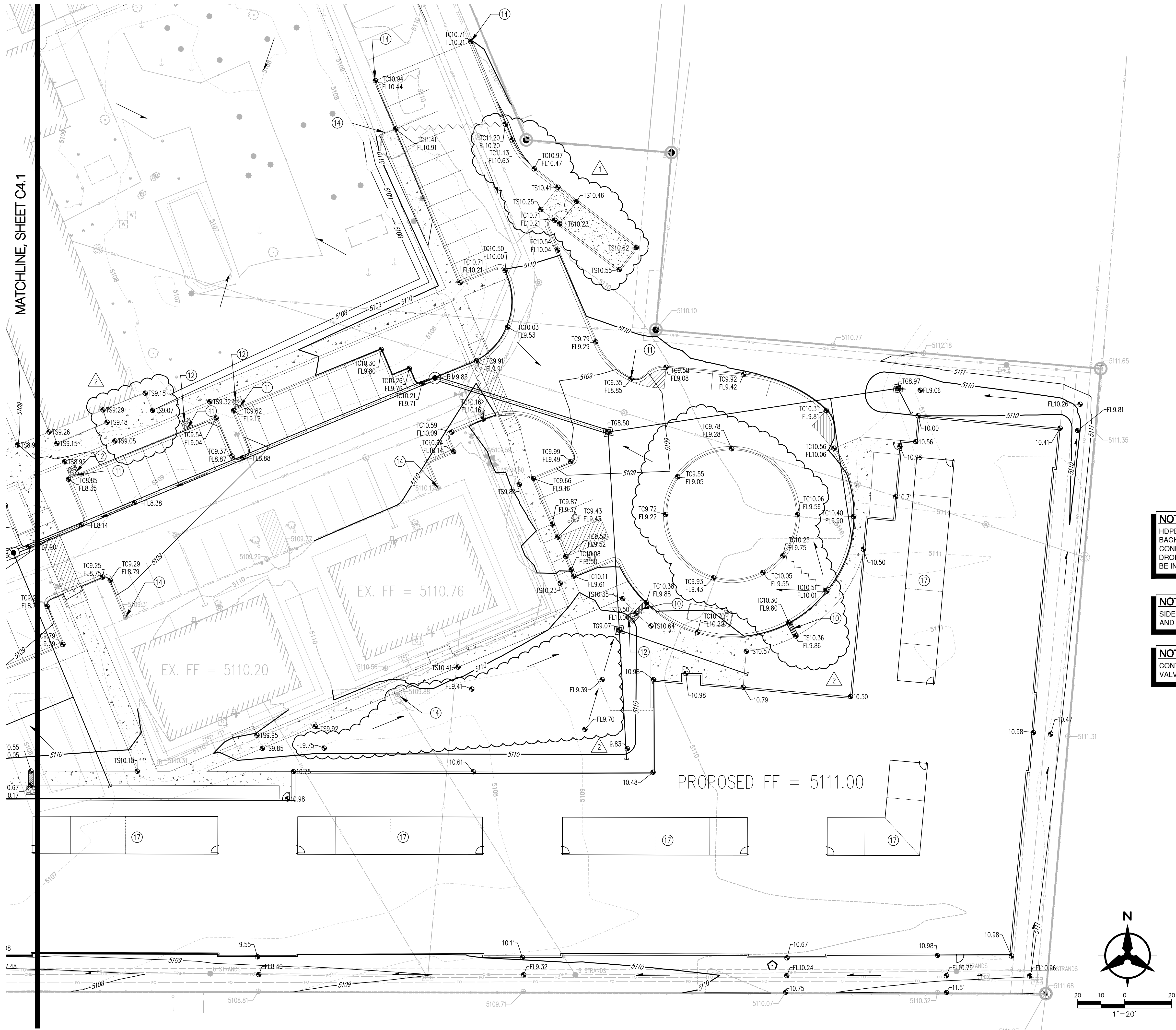


MATCHLINE, SHEET C4.1



GRADING KEYED NOTES

- CONNECT NEW 24" STORM DRAIN CONSTRUCTED UNDER COA PROJECT NUMBER 690283 TO NEW MANHOLE.
- INSTALL STORM DRAIN MANHOLE PER COA STD DWG 2102
- INSTALL HDPE (N12 WT, OR APPROVED EQUAL) STORM DRAIN PIPE, SIZE PER PLANS.
- INSTALL TYPE 'D' STORM DRAIN INLET, PER COA STD DWG 2206; (OR APPROVED NYLOPLAST INLET EQUAL) W/PEDESTRIAN RATED GRATE.
- INSTALL 24" STORM INLET STRUCTURE (NYLOPLAST OR APPROVED EQUAL) W/ DOMED GRATE.
- INSTALL 30" STORM INLET STRUCTURE (NYLOPLAST OR APPROVED EQUAL) WITH PEDESTRIAN RATED GRATE
- PROTECT IN PLACE.
- INSTALL PRE-FABRICATED STORM DRAIN FITTING, SEE PLANS FOR SIZE.
- ENSURE SWALE IS GRADED AND COMPLETE PRIOR TO INSTALLATION OF LANDSCAPING. CONTRACTOR SHALL ENSURE NO DRAINAGE ENTERS THE ADJACENT PROPERTY OWNERS TO THE SOUTH AND EAST. GRADES SHOWN ARE TOP OF FINISHED GRADE.
- INSTALL 24" SIDEWALK CULVERT PER COA STD DWG 2236.
- INSTALL 24" CURB OPENING PER DETAIL 1, SHEET C4.3
- INSTALL RIP RAP BLANKET PER DETAIL 2, SHEET C4.3.
- INSTALL ROOF DRAIN TO WITHIN 5' OF THE BUILDING. SEE PLAN FOR SIZE; SEE PLUMBING PLANS FOR CONTINUATION.
- MATCH EXISTING HORIZONTALLY & VERTICALLY.
- INSTALL 4" WIDE CONCRETE VALLEY GUTTER PER DETAIL 3, SHEET C4.3.
- GRADE AREA TO DRAIN TO NEW INLET. EXISTING COBBLE SHALL BE SALVAGED AND REUSED.
- SEE TYPICAL COURTYARD GRADING DETAIL 4, SHEET C4.3
- INSTALL TYPE 'D' H2O LOADING STORM DRAIN INLET, PER COA STD DWG 2206. OR APPROVED EQUAL.

\* - NOT ALL KEYNOTES ARE USED ON THIS SHEET

NOTE

HDPE PIPE AND FITTINGS SHALL BE INSTALLED AND BACKFILLED PER MANUFACTURER SPECIFICATIONS. CONNECTIONS TO CONCRETE MANHOLES AND CONCRETE DROP INLETS SHALL USE WATER STOP GASKETS AND SHALL BE INSTALLED PER MANUFACTURER'S SPECIFICATIONS

NOTE

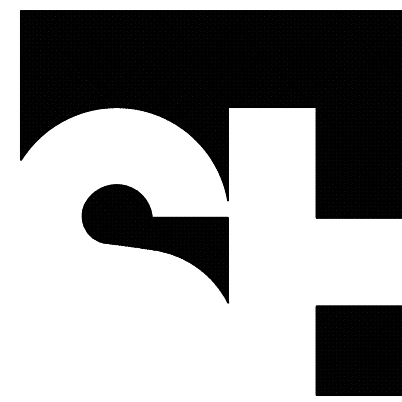
SIDEWALK CROSS-SLOPES SHALL BE AT A MINIMUM OF 1.0% AND A MAXIMUM OF 2.0%

NOTE

CONTRACTOR SHALL ADJUST ALL EXISTING & PROPOSED VALVES, MANHOLES, ETC. TO FINISHED GRADE.

LEGEND

- PROPERTY LINE
- EXISTING CONTOURS
- PROPOSED SPOT ELEVATION
- TC=TOP OF CURB, FL=FLOW LINE
- TS=TOP OF SIDEWALK, BW=BOTTOM OF WALL
- EX=EXISTING, TG=TOP OF GRADE
- PROPOSED DIRECTION OF FLOW
- WATER BLOCK
- PROPOSED INDEX CONTOURS
- PROPOSED INTER CONTOURS
- PROPOSED CURB & GUTTER
- EASEMENT
- PROPOSED LIGHTING
- PROPOSED STORM DRAIN LINE



STENGEL-HILL  
ARCHITECTURE

613 WEST MAIN STREET  
LOUISVILLE, KENTUCKY 40202  
502.893.1875  
502.893.1876 fax

ACADIA  
HEALTH CARE



GRADING AND DRAINAGE PLAN  
NEW RESIDENTIAL TREATMENT CENTER  
DESERT HILLS OF NEW MEXICO  
ALBUQUERQUE, NEW MEXICO

COA Comments 2014-06-20  
Plan Revisions 2014-06-20

20 JUNE 2014  
AHC1313

C4.2