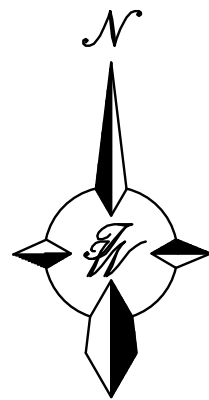


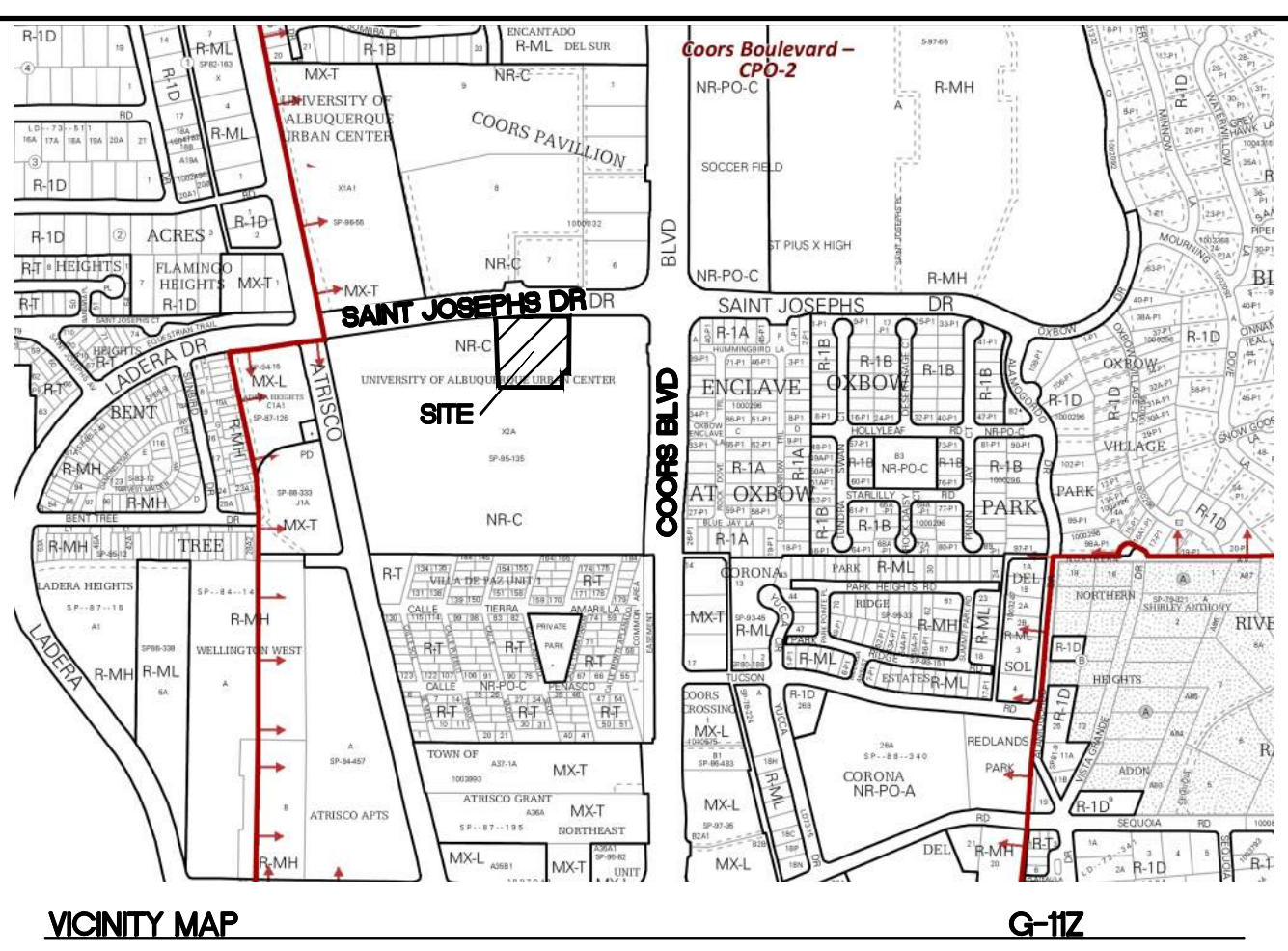
- ① UNIDIRECTIONAL ACCESSIBLE RAMP, SEE DETAIL SHEET DET-1
- ② ACCESSIBLE PARKING SPACE PER ADA STANDARDS
- ③ 6' VALLEY GUTTER PER COA DWG 2420
- ④ BICYCLE RACK SEE DETAIL SHEET DET-1
- ⑤ MOTORCYCLE SPACE W/SIGN SEE DETAIL SHEET DET-1
- ⑥ 6' SIDEWALK, SEE ARCHITECTURAL PLAN FOR DETAIL
- ⑦ 6' SIDEWALK PER COA DWG 2430 TO BE BUILT BY OTHERS
- ⑧ DUMPSTER W/RECYCLING SEE DETAIL SHEET DET-2
- ⑨ WHEEL STOP (TYP) SEE DETAIL SHEET DET-1
- ⑩ DRIVEUP ISLANDS SEE ARCHITECTURAL PLANS
- ⑪ 8" CURB AND GUTTER PER COA DWG 2415A
- ⑫ 10' TRANSITION FROM 6" TO 8" CURB
- ⑬ PEDESTRIAN CROSSING
- ⑭ ONE WAY SIGN R3-5A
- ⑮ DO NOT ENTER SIGN R5-1
- ⑯ HEAVY DUTY PAVEMENT, SEE DETAIL SHEET DET-1
- ⑰ STANDARD DUTY PAVEMENT, SEE DETAIL SHEET DET-1

LINE TABLE		
LINE	BEARING	LENGTH
L1	S89°49'11"E	141.21
L2	N88°01'12"E	42.00
L3	N1°58'48"W	147.66
L4	S89°59'52"W	208.02
L5	S0°00'01"W	38.88
L6	S89°59'52"W	30.83
L7	S0°10'32"W	198.74

CURVE TABLE			
CURVE	DELTA	RADIUS	LENGTH
C2	91°19'44"	25.00	39.85
C5	6°51'24"	500.00	59.84



### GRAPHIC SCALE



**LEGAL DESCRIPTION:**

LOT 8, UNIVERSITY OF ALBUQUERQUE URBAN CENTER  
FILED JULY 10, 1995, IN BOOK 95C, PAGE 250

## SITE DATA

PROPOSED USAGE	BANK
LOT AREA	56032 SF (1.29 ACRES)
ZONING	NR-C

BUILDING AREA 3307 SF

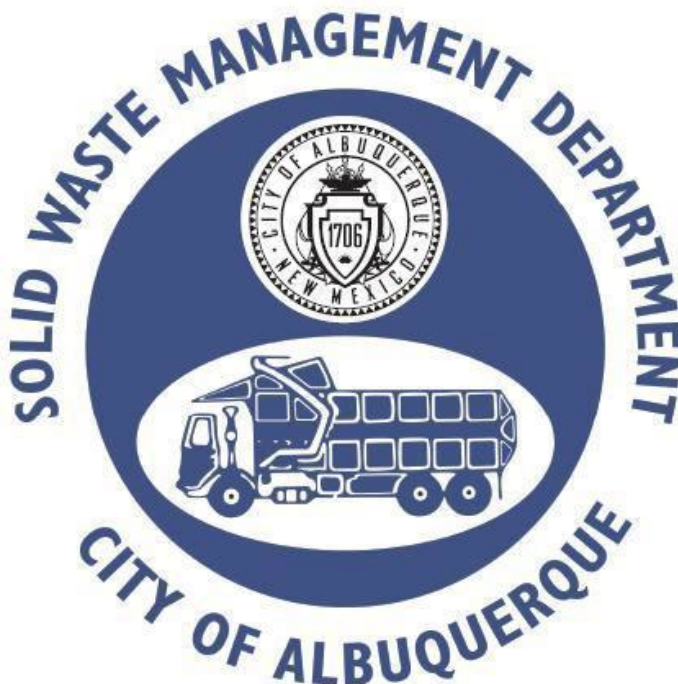
FRONT	5'
REAR	0'
SIDE	0'

PARKING REQUIRED	22 SPACES
PARKING PROVIDED	23 SPACES (2 EV CHARGING STATIONS)
ACCESSIBLE SPACES REQUIRED	2 SPACES (1 VAN)
ACCESSIBLE SPACES PROVIDED	1 SPACES (1 VAN)
TOTAL PARKING PROVIDED	24 SPACES

MOTORCYCLE SPACES REQUIRED	1 SPACES
MOTORCYCLE SPACES PROVIDED	2 SPACES

BICYCLE SPACES REQUIRED	5
BICYCLE SPACES PROVIDED	5

LANDSCAPE REQUIRED	7910 SF (15% NET AREA, 52725 SF)
LANDSCAPE PROVIDED	9698 SF





**Approved for access by the Solid Waste Department.**

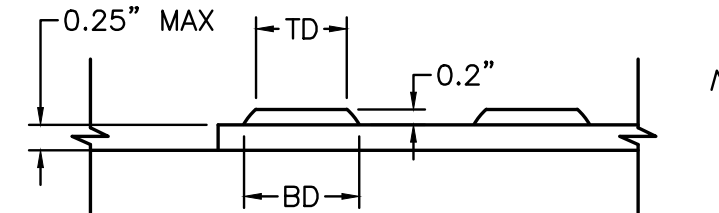
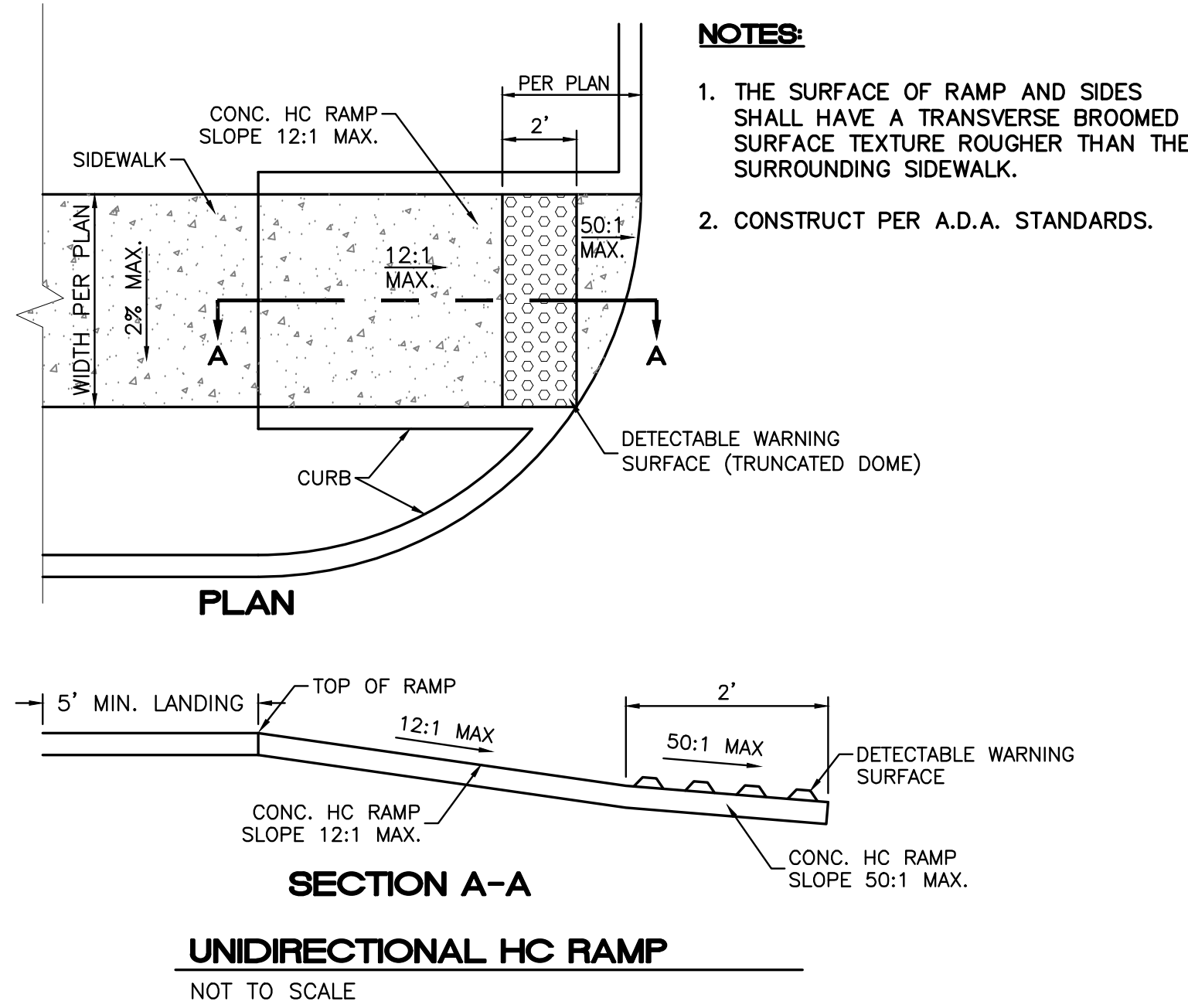
**All containers must be made accessible for pick up between the hours of 5AM and 8PM.**

**Reviewer:** ADRIAN MAREZ

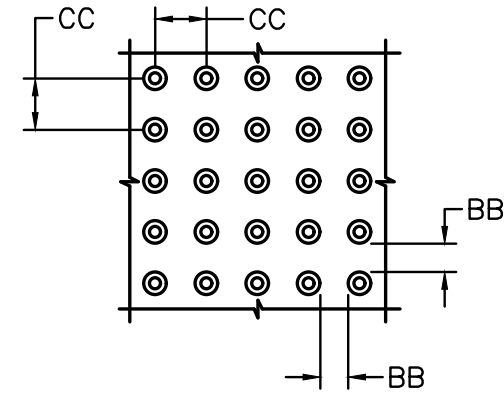
**Date:** 3-13-25

<p>ENGINEER'S SEAL</p>	<p>SUNWARD FEDERAL CREDIT UNION 5700 ST JOSEPH'S DR NW ALBUQUERQUE, NM</p>	<p><i>DRAWN BY</i> pm</p>
	<p>TRAFFIC CIRCULATION PLAN</p>	<p><i>DATE</i> 3-12-25</p>
	<p><i>TIERRA WEST, LLC</i> 5571 MIDWAY PARK PL NE ALBUQUERQUE, NEW MEXICO 87109 (505) 858-3100 www.tierrawestllc.com</p>	<p><i>SHEET #</i> <b>SP-1</b></p>
<p>3-12-25</p> <p>RONALD R. BOHANNAN P.E. #7868</p>		<p><i>JOB #</i> 2024073</p>





**DOME SECTION**  
BD - BASE DIAMETER 0.9\"/>



NON-VAN ACCESSIBLE SPACES  
BOTTOM OF THIS SIGN  
60\"/>

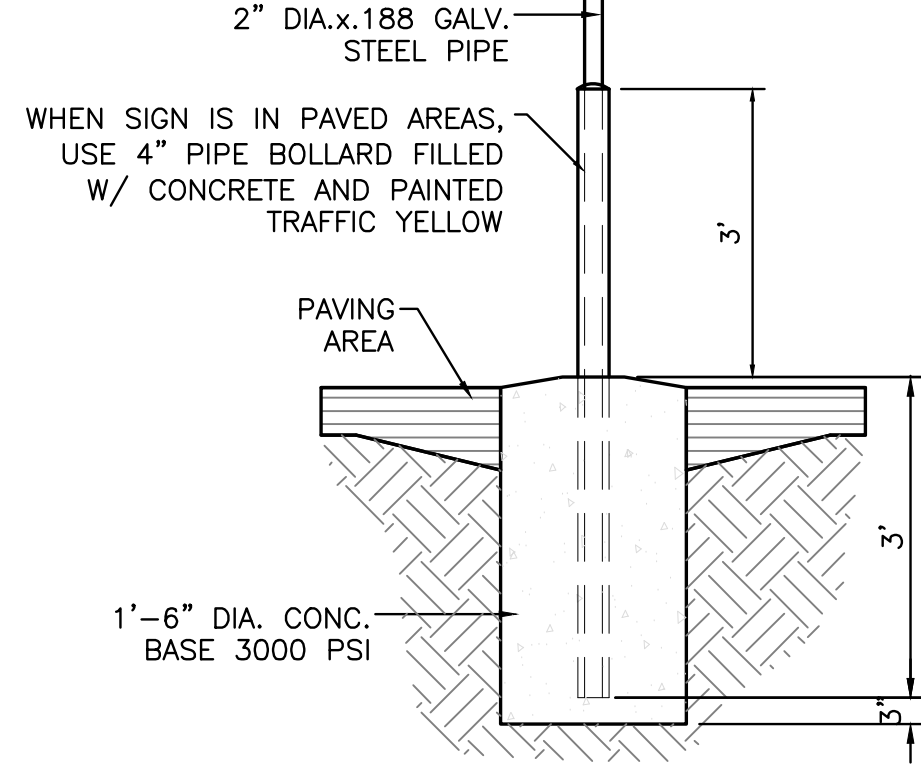
VAN ACCESSIBLE SPACES  
BOTTOM OF THIS SIGN  
60\"/>

SIGN TYPE R7-8 (12"x18")  
SIGN FIELD IS WHITE  
SIGN LETTERING AND BORDER ARE GREEN  
INTERNATIONAL SYMBOL OF ACCESSIBILITY  
IS WHITE ON A BLUE BACKGROUND

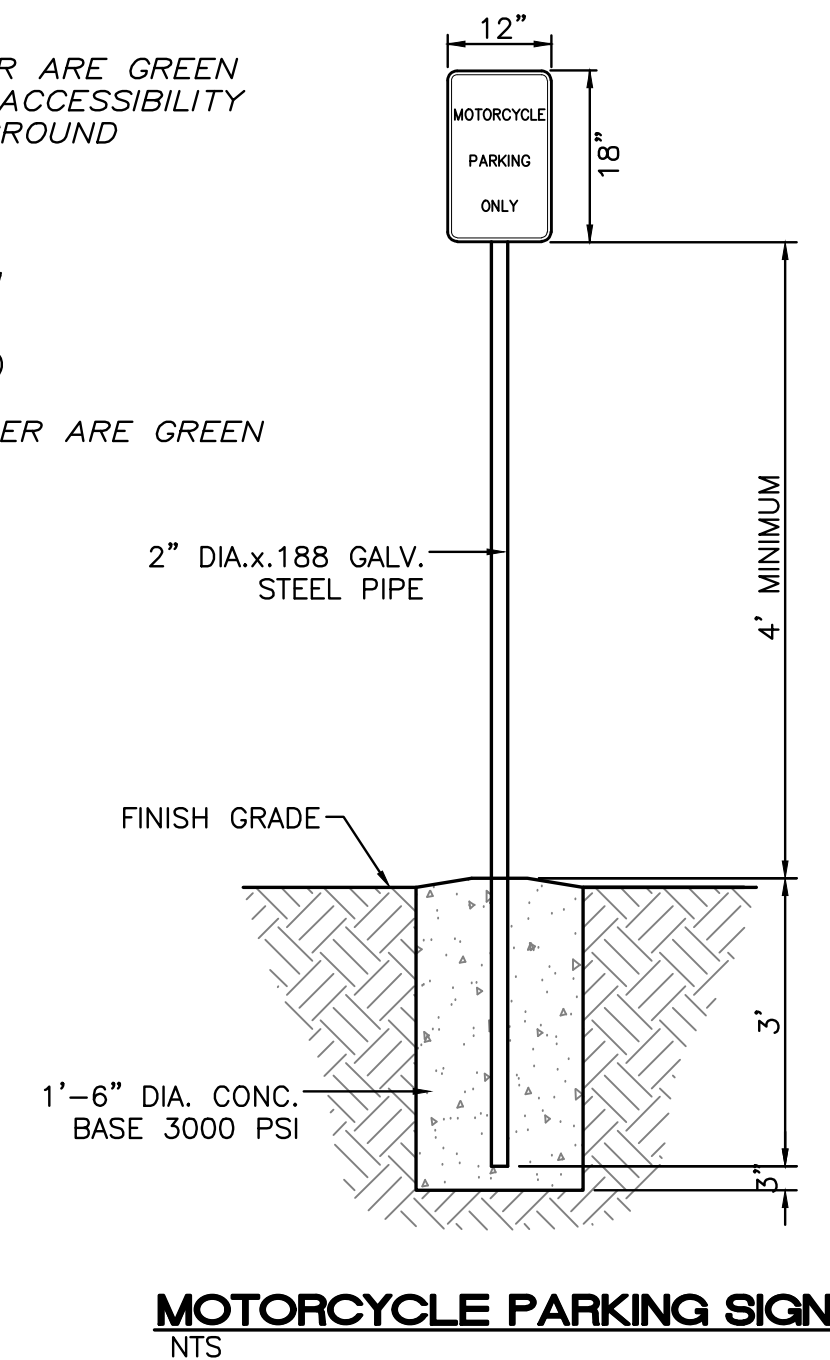
REQUIRED LANGUAGE PER  
NMSA 197866-7-352.4C  
(Violators are subject to a  
fine and/or towing)

SIGN TYPE R7-8A (6"x12")  
SIGN FIELD IS WHITE  
SIGN LETTERING AND BORDER ARE GREEN

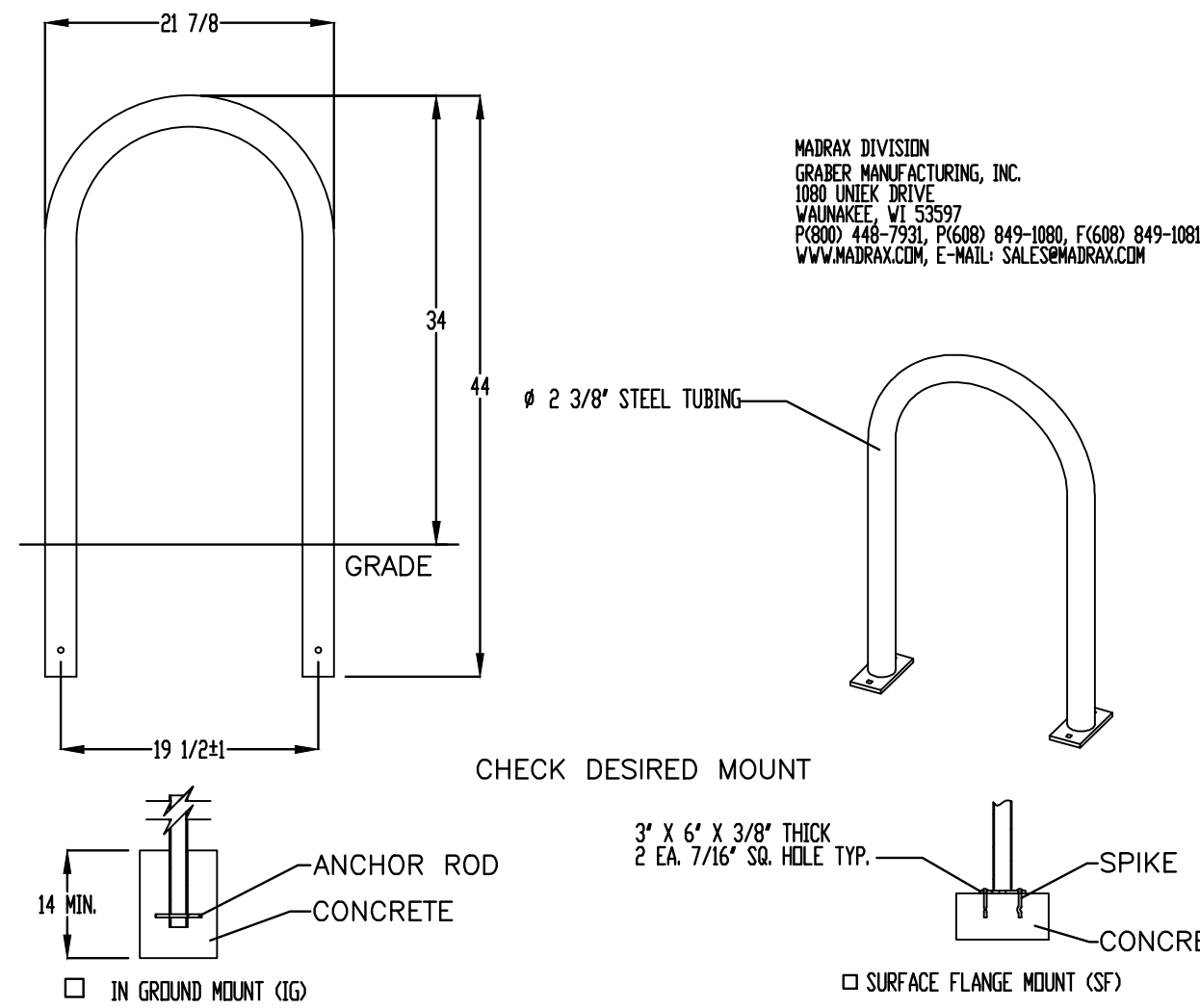
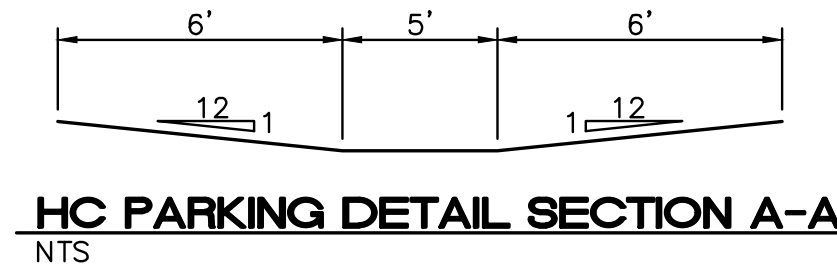
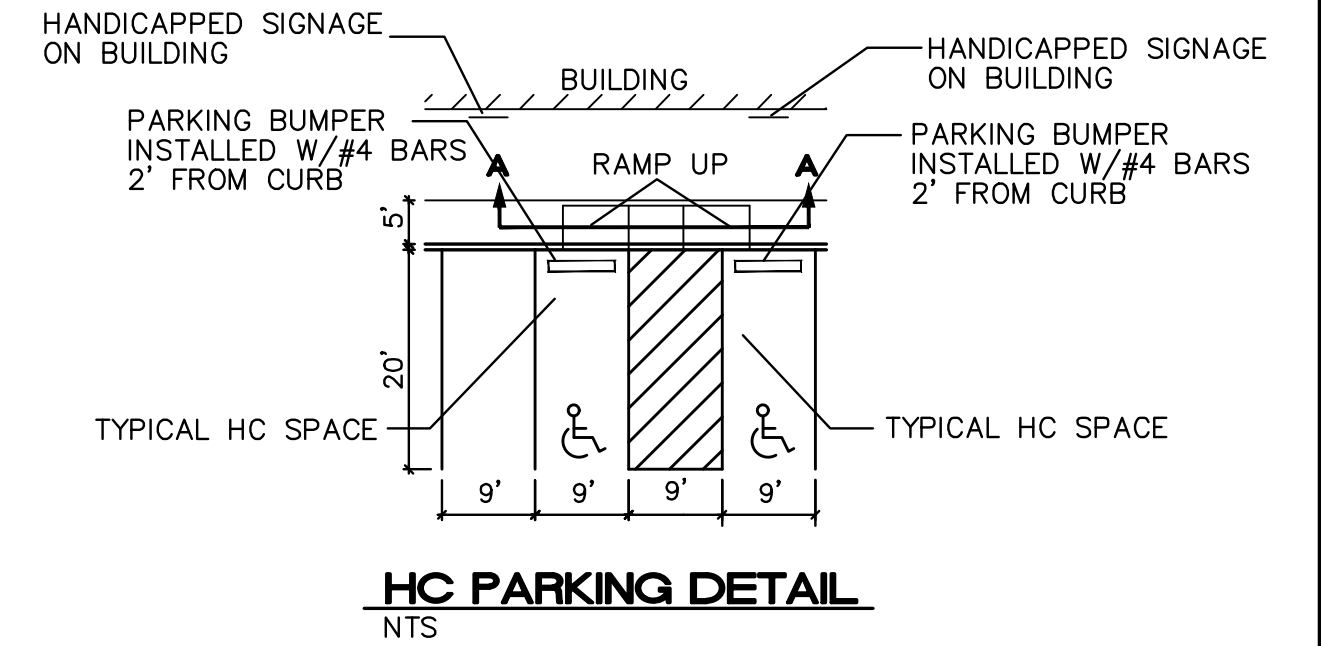
REQUIRED LANGUAGE  
(VAN ACCESSIBLE)  
PER ANSI 502.7



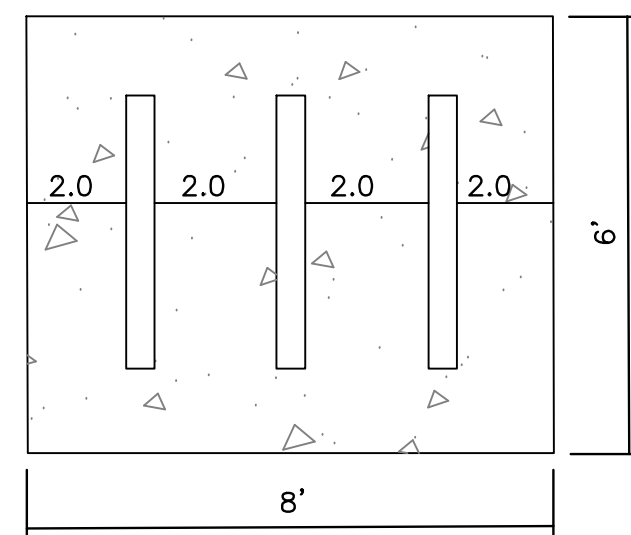
**ACCESSIBLE PARKING SIGN**  
NTS



**MOTORCYCLE PARKING SIGN**  
NTS



MADRIX DIVISION  
GRABER MANUFACTURING, INC.  
1080 UNEX DRIVE  
WALTON, VT 05597  
PHONE 448-7931, FAX 448-1080, F. 448-849-1081  
WWW.MADRIX.COM, E-MAIL: SALES@MADRIX.COM

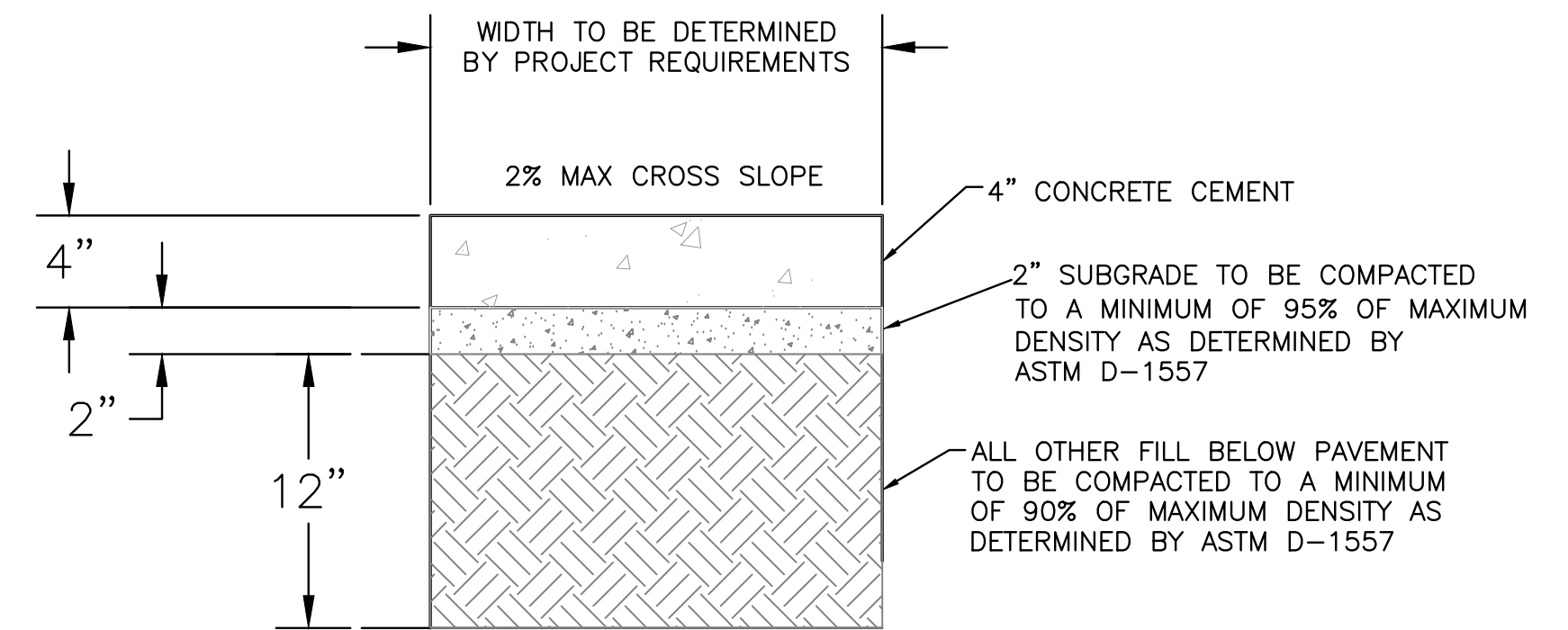


**BIKE RACK DETAIL**  
NTS

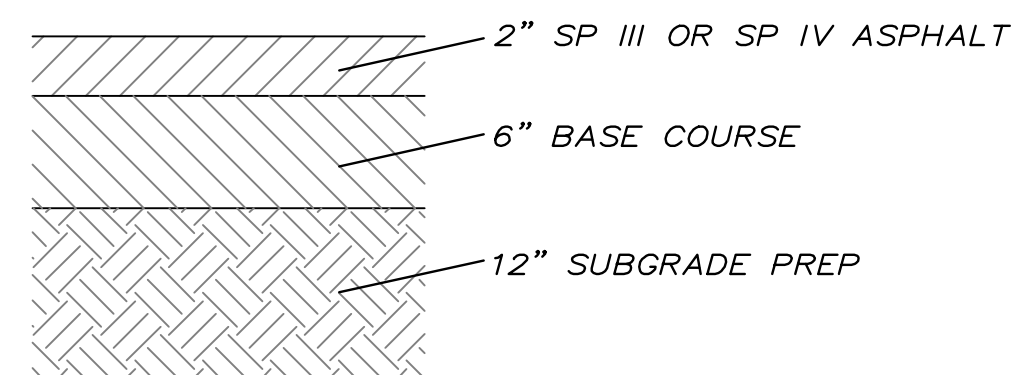
PRODUCT: UP38-HG(SF)  
DESCRIPTION: 1\"/>

**NOTES:**  
1. INSTALL BIKE RACKS ACCORDING TO MANUFACTURER'S SPECIFICATIONS.  
2. CONSULTANT TO SELECT COLOR/FINISH; SEE MANUFACTURER'S SPECIFICATIONS.  
3. SEE SITE PLAN FOR LOCATION OR CONSULT OWNER.  
4. BIKE RACK SHALL HAVE A 1-FOOT CLEAR ZONE ALL AROUND.  
5. EACH BIKE RACK SPACE SHALL BE AT LEAST 6 FEET LONG AND 2 FEET WIDE.

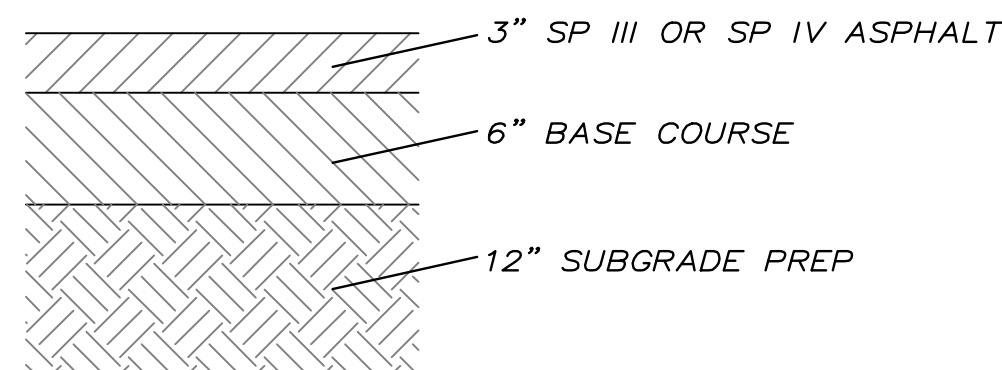
©2018 GRABER MANUFACTURING, INC. ALL PROPRIETARY RIGHTS RESERVED.



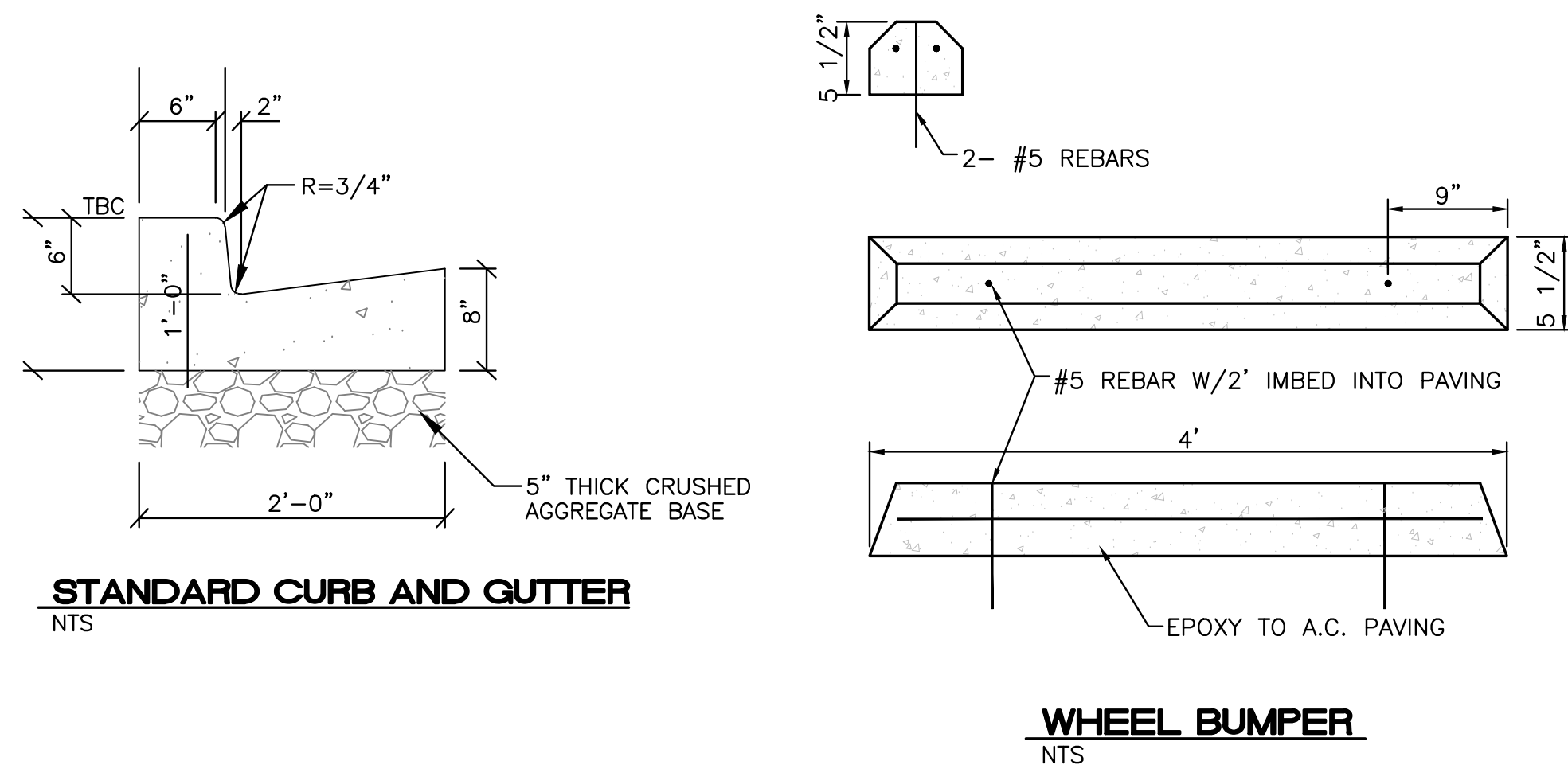
**CONCRETE SIDEWALK SECTION**



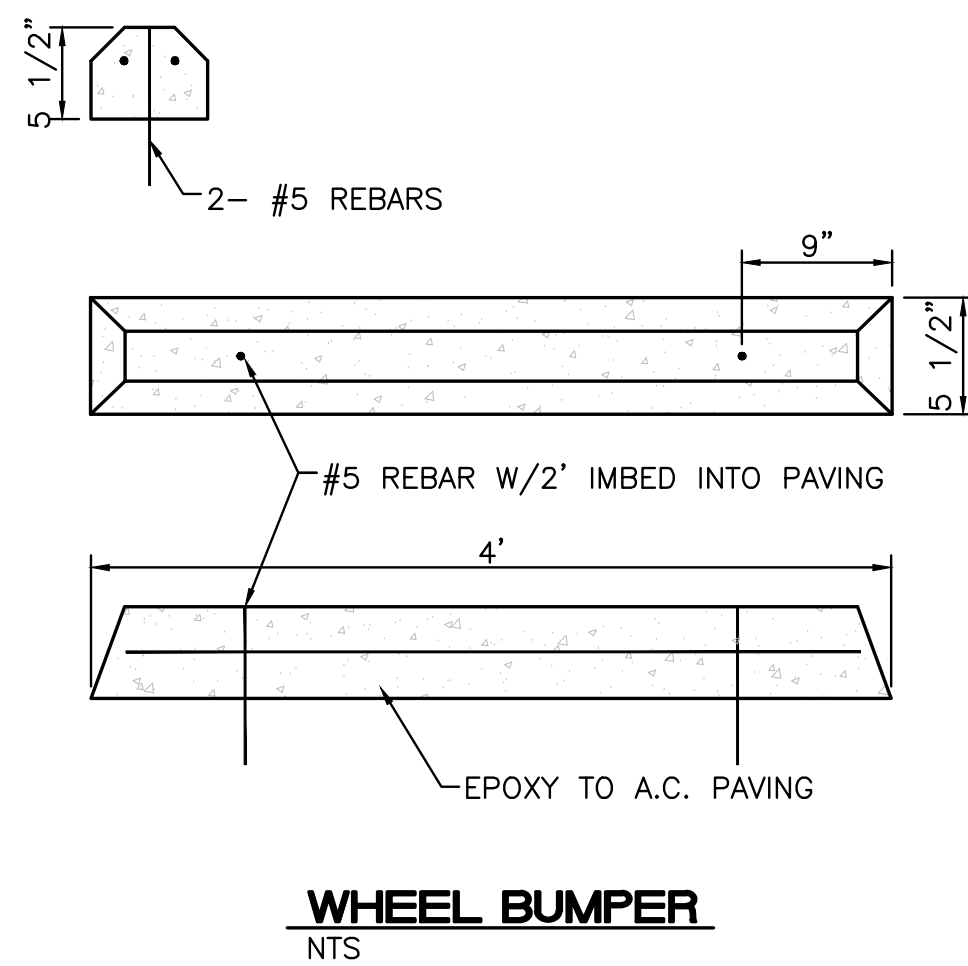
**PAVEMENT SECTION**  
PER GEOTECHNICAL REPORT



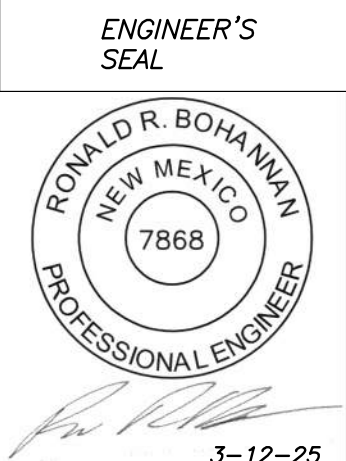
**HEAVY DUTY PAVEMENT SECTION**  
PER GEOTECHNICAL REPORT

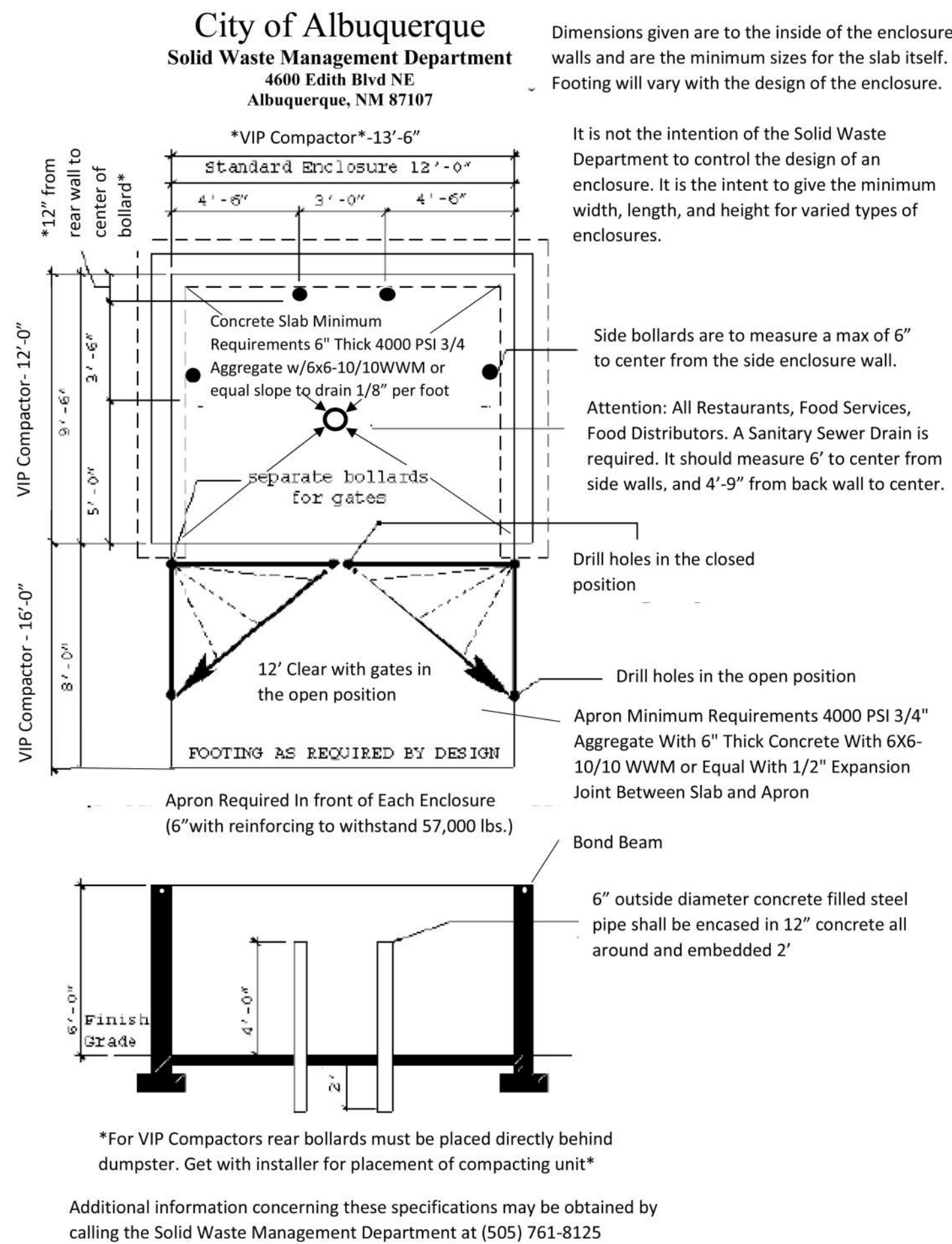



**STANDARD CURB AND GUTTER**  
NTS



**WHEEL BUMPER**  
NTS

 RONALD R. BOHANNAN P.E. #7868	SUNWARD FEDERAL CREDIT UNION 5700 ST JOSEPH'S DR NW ALBUQUERQUE, NM	DRAWN BY pm
		DATE 3-12-25
	CONSTRUCTION DETAILS	DRAWING 2024076-SP
		SHEET # <b>DET-1</b>
	TERRA WEST, LLC 5571 MIDWAY PARK PL NE ALBUQUERQUE, NEW MEXICO 87109 (505) 858-3100 www.tierrawestllc.com	
	JOB # 2024073	



 RONALD R. BOHANNAN P.E. #7868	SUNWARD FEDERAL CREDIT UNION 5700 ST JOSEPH'S DR NW ALBUQUERQUE, NM	DRAWN BY pm
		DATE 3-12-25
	TERRA WEST, LLC 5571 MIDWAY PARK PL NE ALBUQUERQUE, NEW MEXICO 87109 (505) 858-3100 www.tierrawestllc.com	DRAWING 2024076-SP
		SHEET # <b>DET-2</b> JOB # 2024073