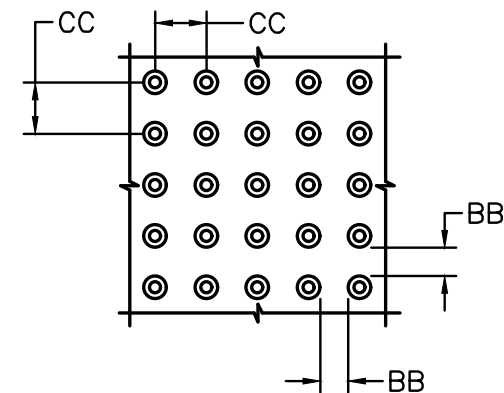


**DOME SECTION**  
BD - BASE DIAMETER 0.9\"/>



**DOME SPACING**  
CC - CENTER TO CENTER SPACING 2.35\"/>

NON-VAN ACCESSIBLE SPACES  
BOTTOM OF THIS SIGN  
60\"/>

VAN ACCESSIBLE SPACES  
BOTTOM OF THIS SIGN  
60\"/>

SIGN TYPE R7-8 (12"x18")  
SIGN FIELD IS WHITE  
SIGN LETTERING AND BORDER ARE GREEN  
INTERNATIONAL SYMBOL OF ACCESSIBILITY  
IS WHITE ON A BLUE BACKGROUND

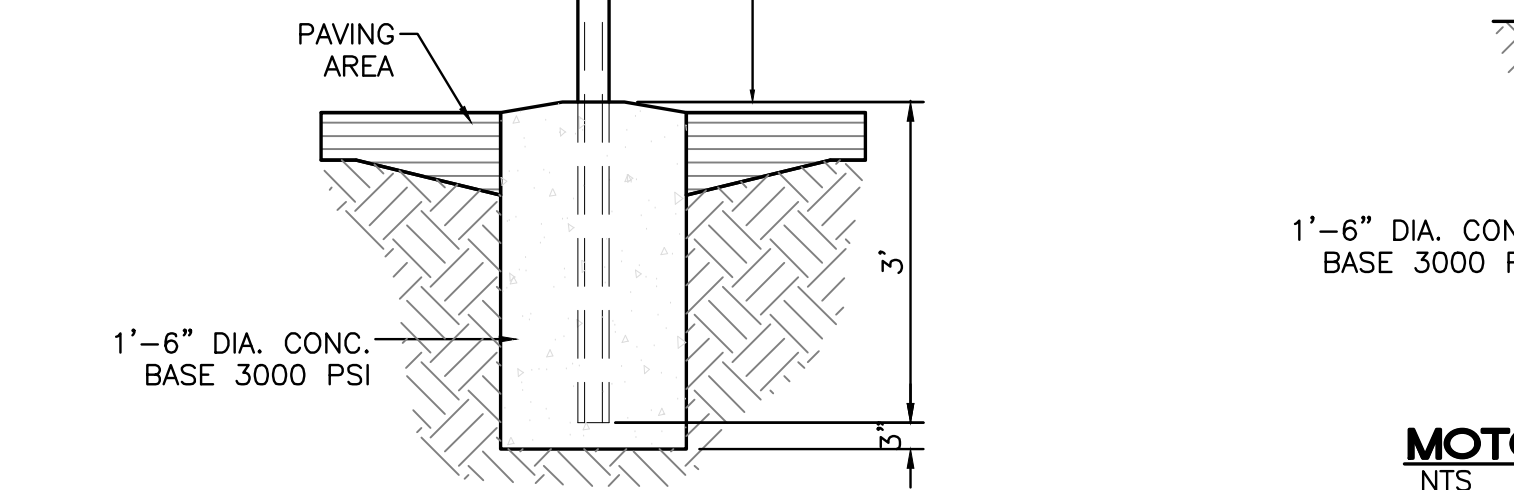
REQUIRED LANGUAGE PER  
NMSA 197866-7-352.4C  
(Violators are subject to a  
fine and/or towing)

SIGN TYPE R7-8A (6"x12")  
SIGN FIELD IS WHITE  
SIGN LETTERING AND BORDER ARE GREEN

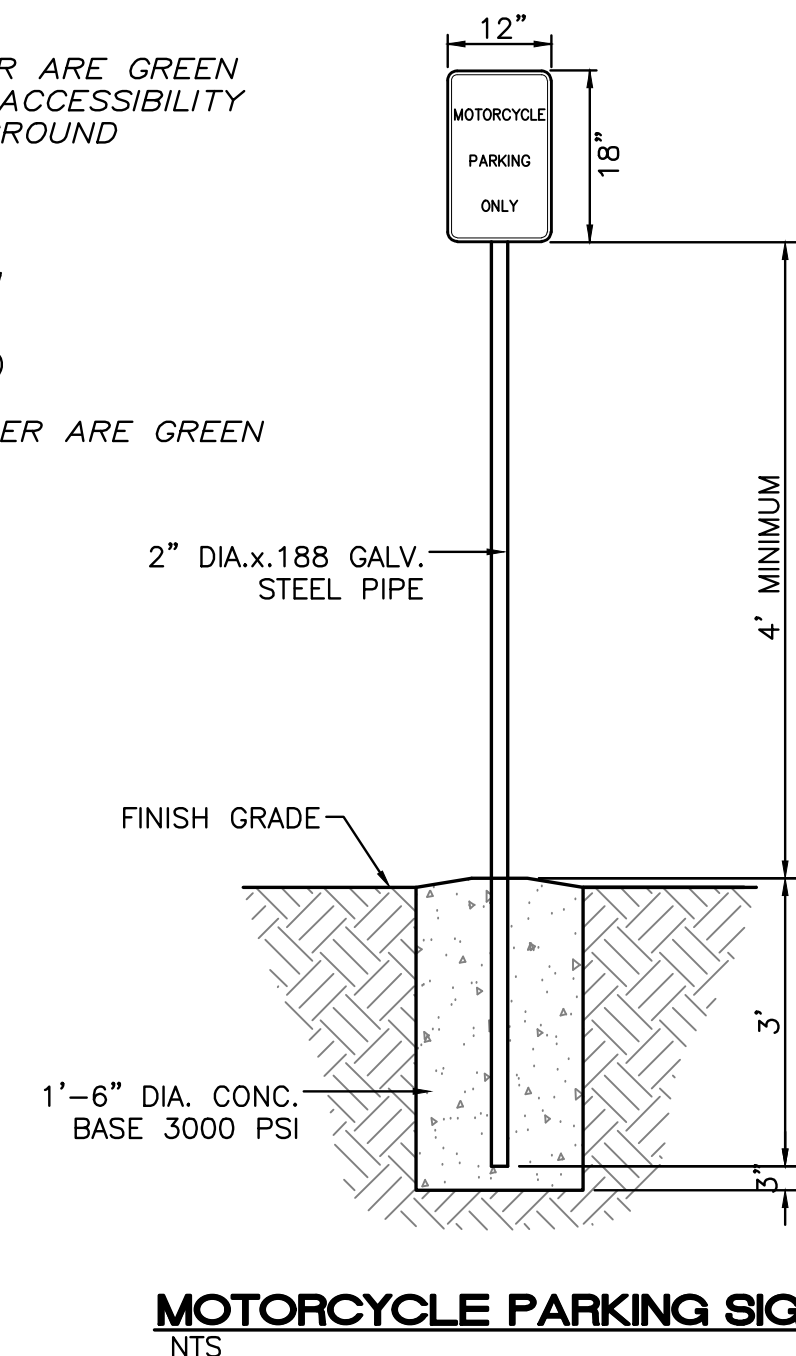
REQUIRED LANGUAGE  
(VAN ACCESSIBLE)  
PER ANSI 502.7

2" DIA.x.188 GALV.  
STEEL PIPE

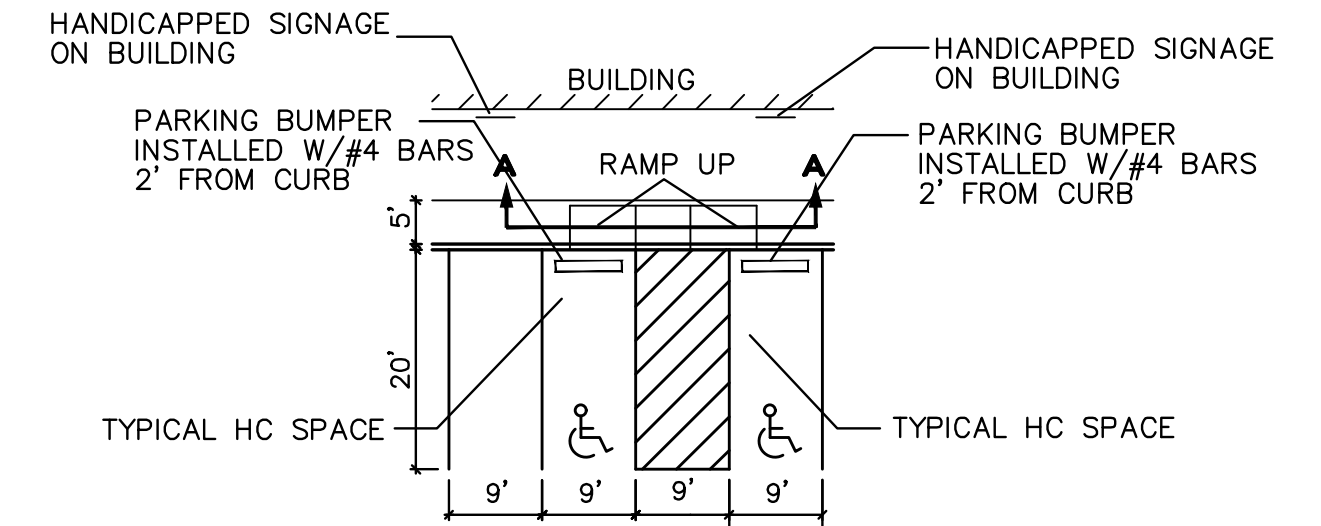
WHEN SIGN IS IN PAVED AREAS,  
USE 4" PIPE BOLLARD FILLED  
W/ CONCRETE AND PAINTED  
TRAFFIC YELLOW



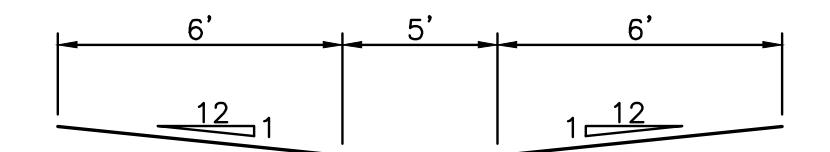
**ACCESSIBLE PARKING SIGN**  
NTS



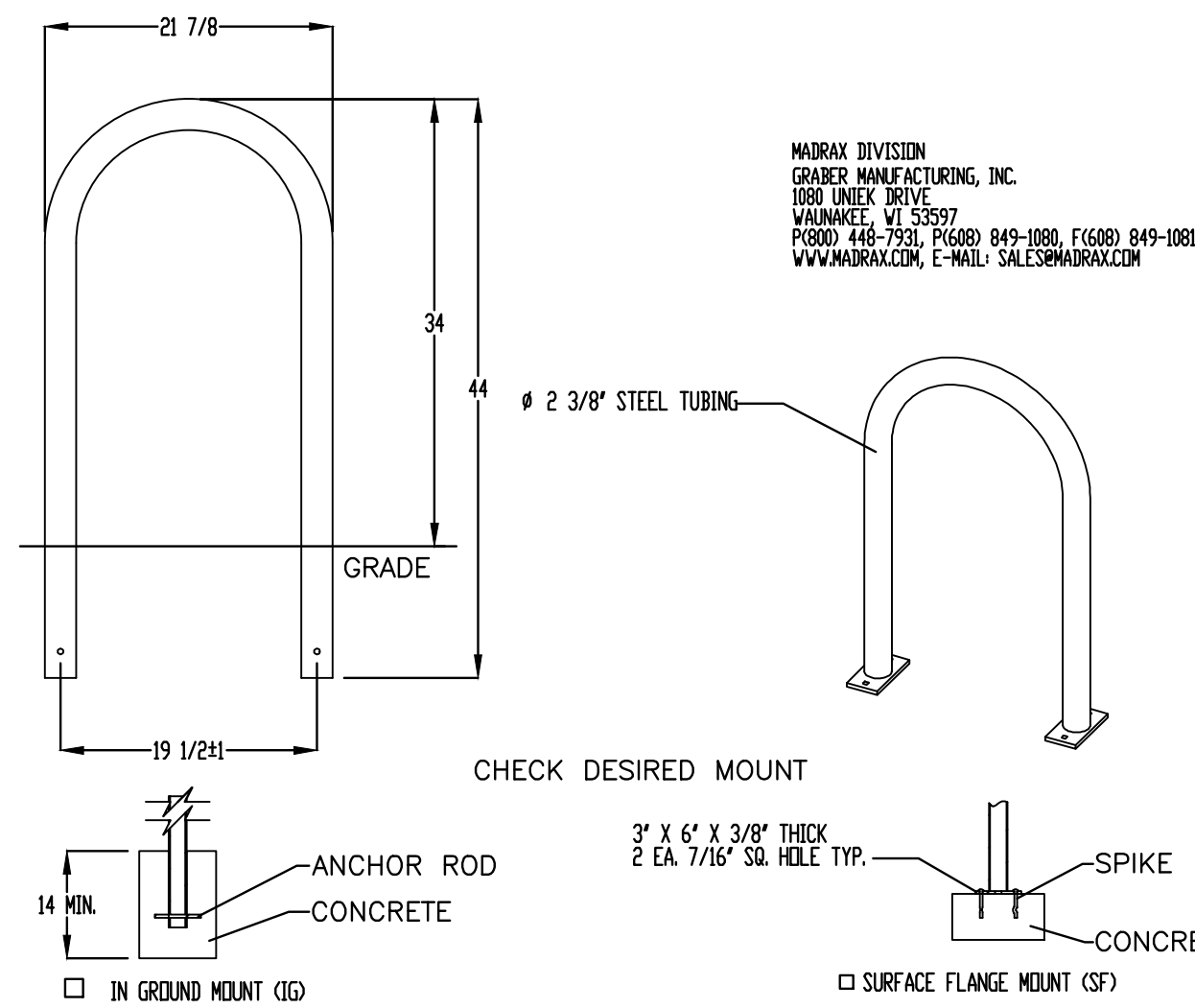
**MOTORCYCLE PARKING SIGN**  
NTS



**HC PARKING DETAIL**  
NTS

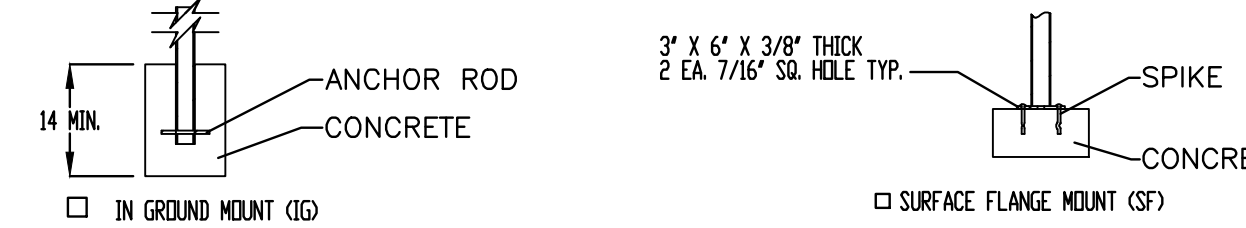


**HC PARKING DETAIL SECTION A-A**  
NTS



MADRIX DIVISION  
GRABER MANUFACTURING, INC.  
1080 UNEX DRIVE  
WALPOLE, VT 05597  
PHONE 448-7931, F1688 849-1080, F1688 849-1081  
WWW.MADRIX.COM, E-MAIL: SALES@MADRIX.COM

CHECK DESIRED MOUNT

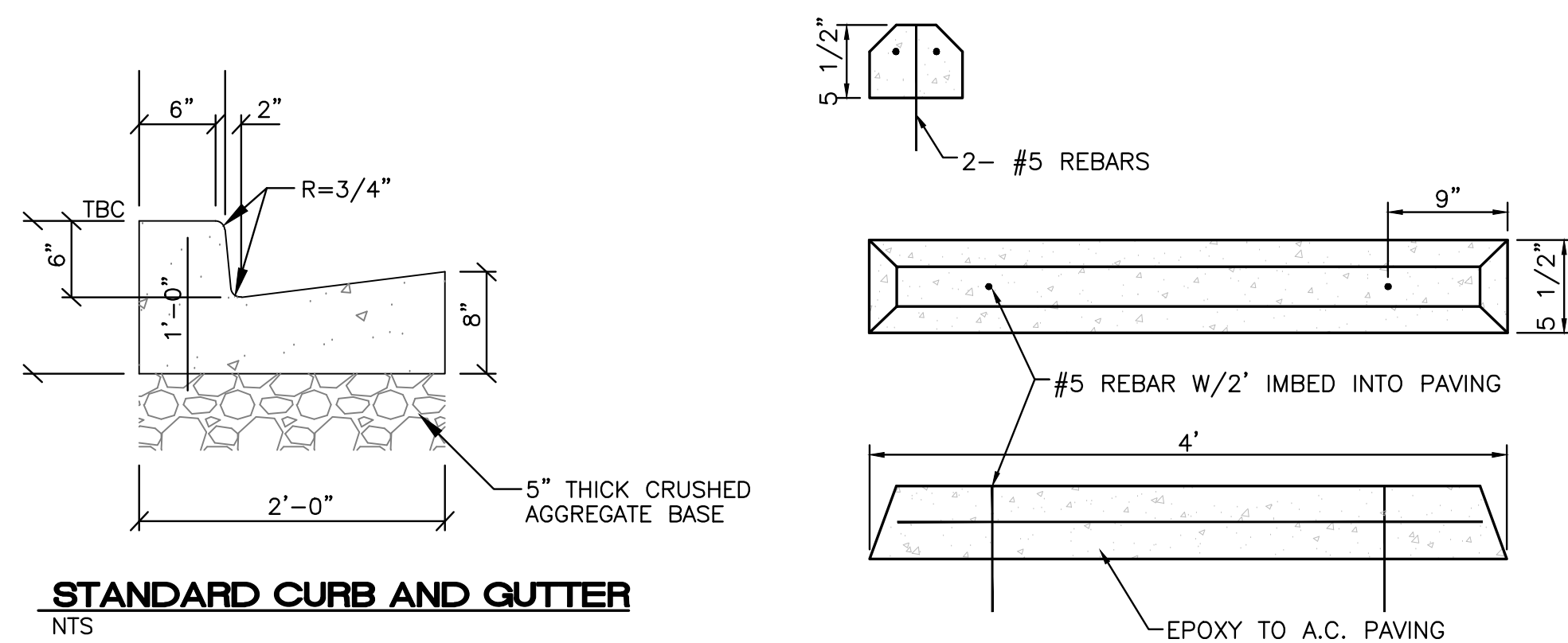


PRODUCT: U238-IG(SF)  
DESCRIPTION: U2 BIKE RACK  
DATE: 10-4-18  
ENG: SNC  
CONFIDENTIAL DRAWING AND INFORMATION IS NOT TO BE COPIED OR DISCLOSED  
TO OTHERS WITHOUT THE CONSENT OF GRABER MANUFACTURING, INC.  
SPECIFICATIONS ARE SUBJECT TO CHANGE WITHOUT NOTICE.

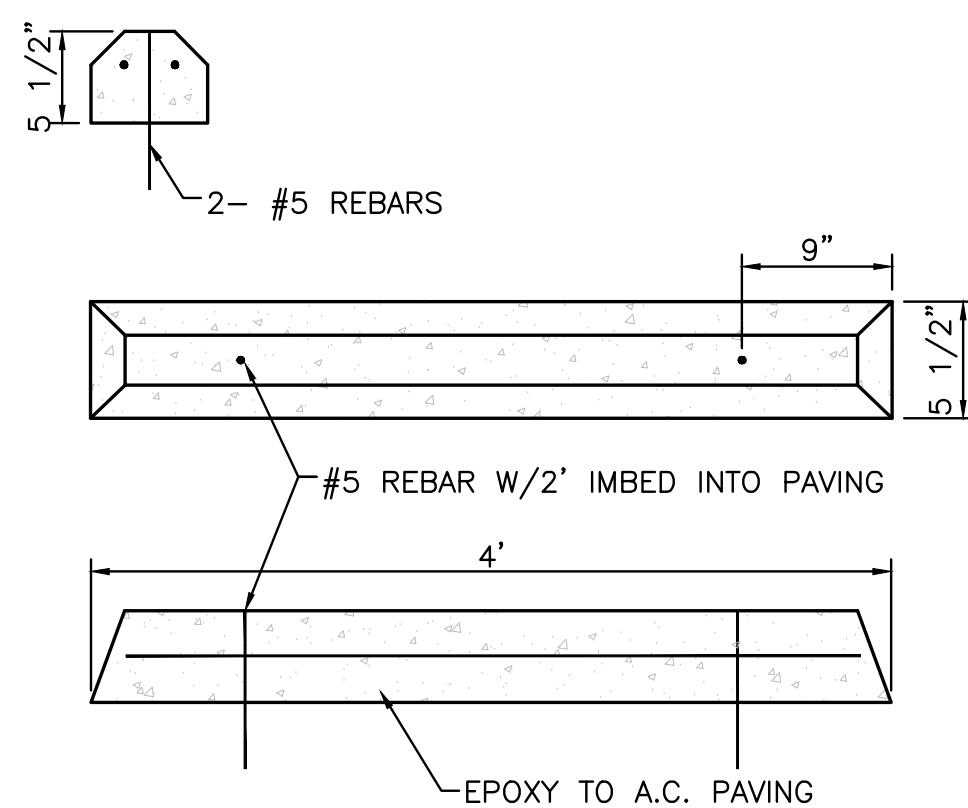
©2018 GRABER MANUFACTURING, INC. ALL PROPRIETARY RIGHTS RESERVED.

**BIKE RACK DETAIL**  
NTS

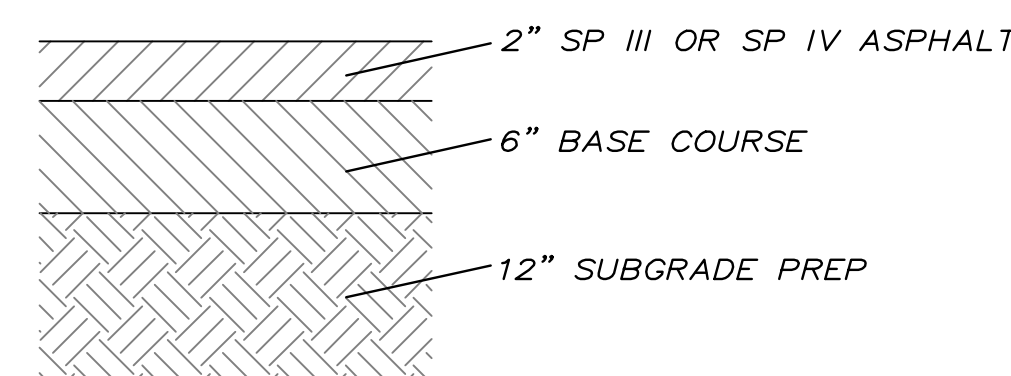
**NOTES:**  
1. INSTALL BIKE RACKS ACCORDING TO MANUFACTURER'S SPECIFICATIONS.  
2. CONSULTANT TO SELECT COLOR FINISH; SEE MANUFACTURER'S SPECIFICATIONS.  
3. SEE SITE PLAN FOR LOCATION OR CONSULT OWNER.  
4. BIKE RACK SHALL HAVE A 1-FOOT CLEAR ZONE ALL AROUND.  
5. EACH BIKE RACK SPACE SHALL BE AT LEAST 6 FEET LONG AND 2 FEET WIDE.



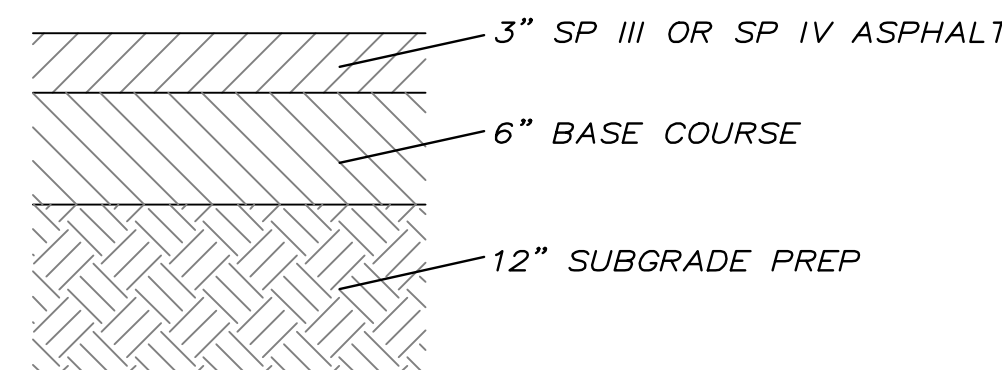
**STANDARD CURB AND GUTTER**  
NTS



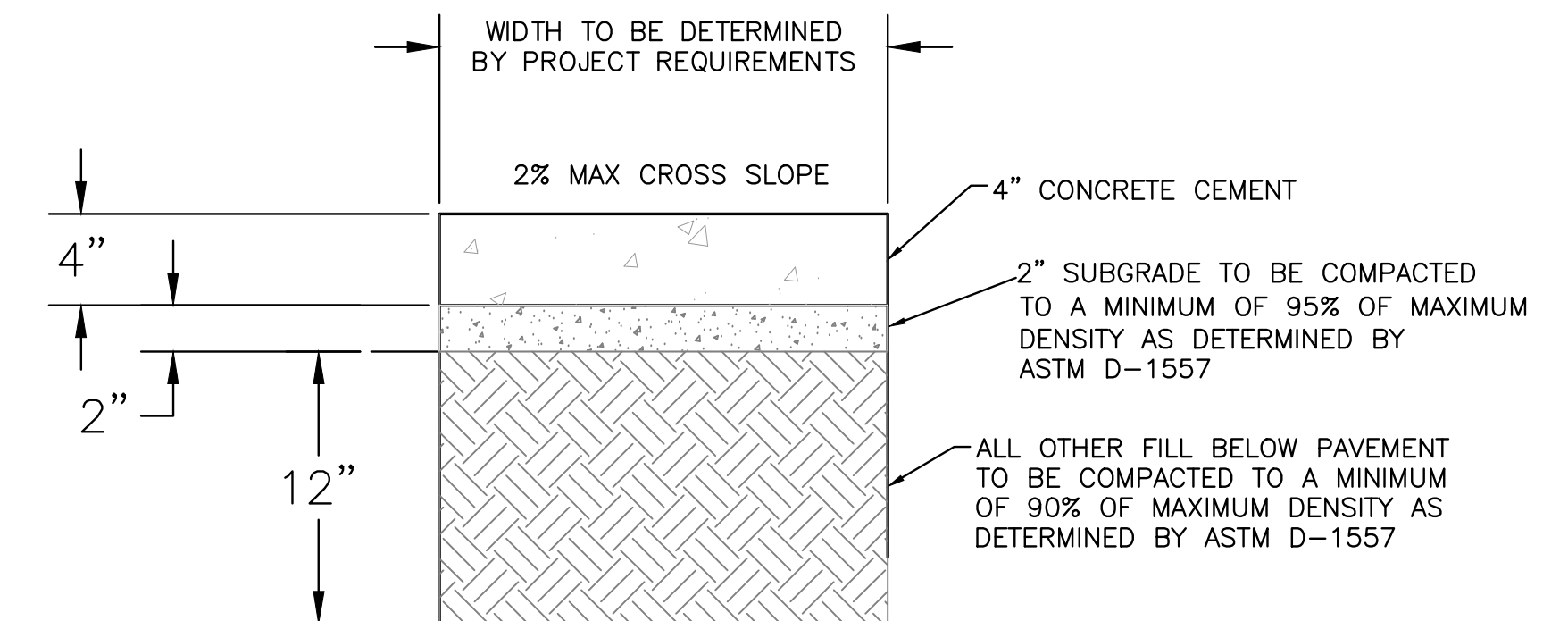
**WHEEL BUMPER**  
NTS



**PAVEMENT SECTION**  
PER GEOTECHNICAL REPORT



**HEAVY DUTY PAVEMENT SECTION**  
PER GEOTECHNICAL REPORT



**CONCRETE SIDEWALK SECTION**

<div>ENGINEER'S SEAL</div> <div>RONALD R. BOHANNAN NEW MEXICO 7868 PROFESSIONAL ENGINEER</div> <div>3-12-25</div> <div>RONALD R. BOHANNAN P.E. #7868</div>	SUNWARD FEDERAL CREDIT UNION 5700 ST JOSEPH'S DR NW ALBUQUERQUE, NM	DRAWN BY pm
		DATE 3-12-25
	CONSTRUCTION DETAILS	DRAWING 2024076-SP
		SHEET # <b>DET-1</b>
	TERRA WEST, LLC 5571 MIDWAY PARK PL NE ALBUQUERQUE, NEW MEXICO 87109 (505) 858-3100 www.tierrawestllc.com	
	JOB # 2024073	