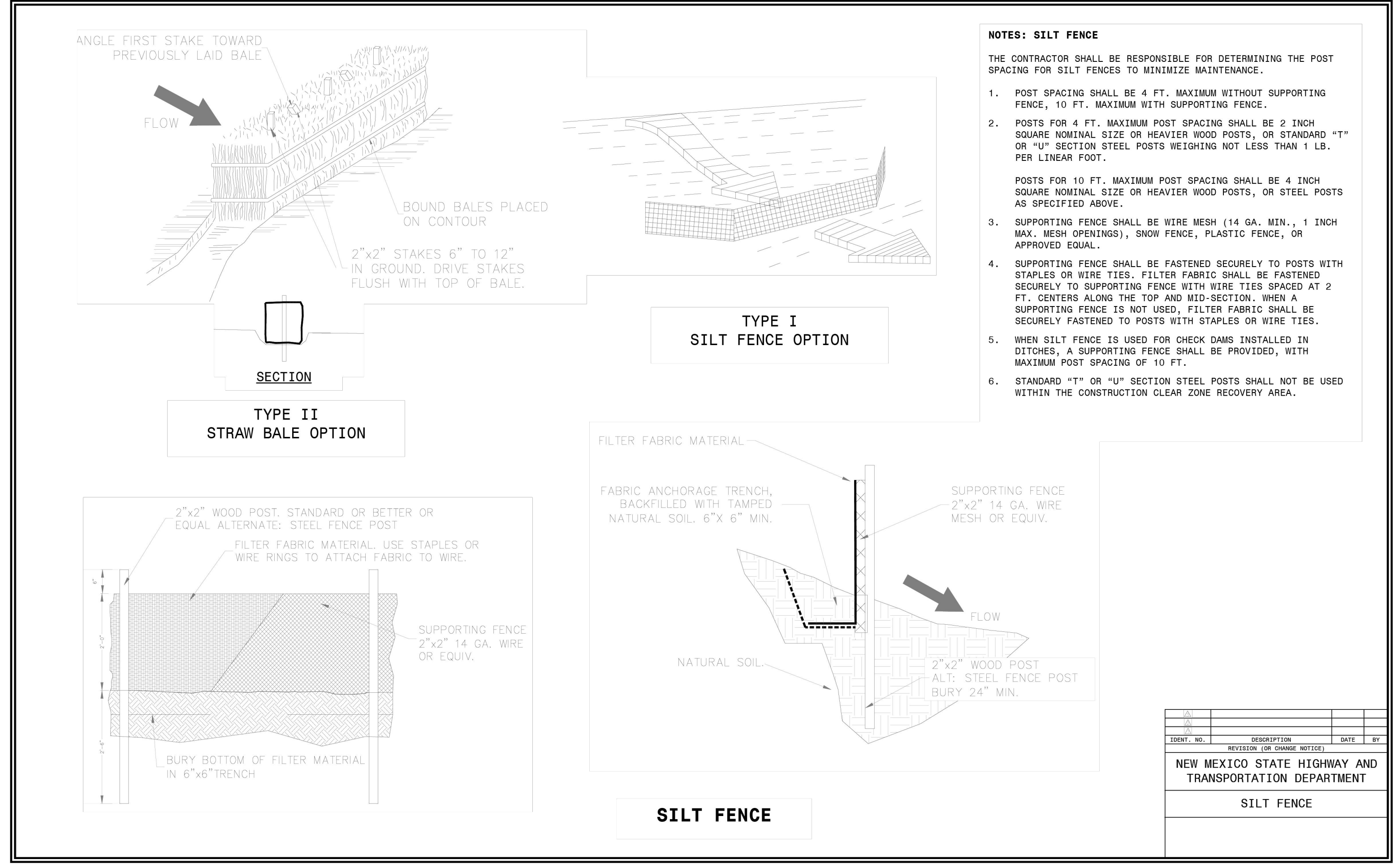
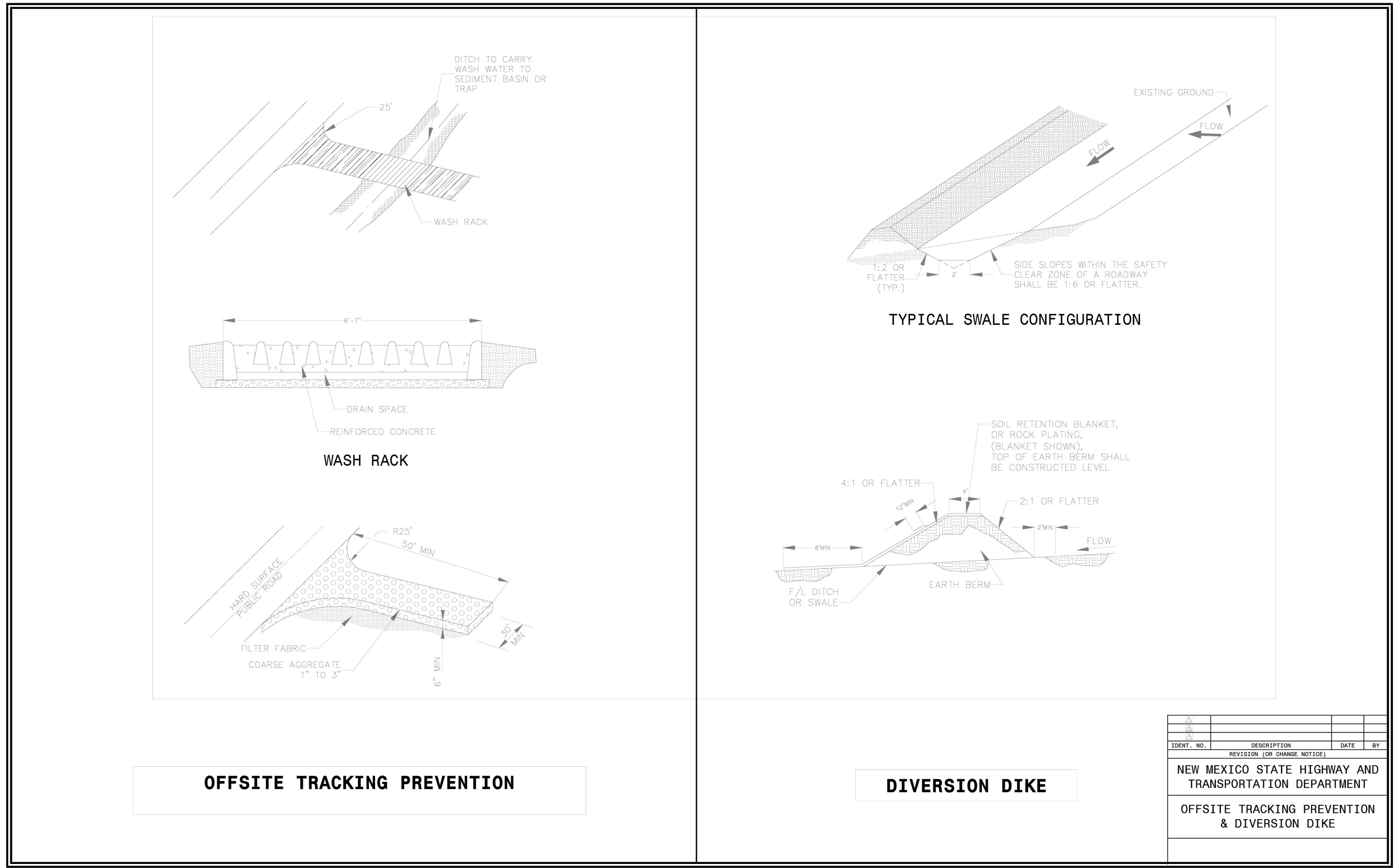


Plotted By: Hernandez, Francisco - Sheet Set: KHA - Layout: EROSION CONTROL DETAILS - February 09, 2026 12:52:58pm - K:\NSD_LDEV\TARGET\Target Albuquerque NMA\CAD\PlanSheets - ON SITE - EROSION CONTROL PLAN.dwg
 This document, together with the concepts and designs presented herein, is intended only for the specific purpose and client for which it was prepared. Reuse of and improper reliance on this document without written authorization and adaptation by Kimley-Horn and Associates, Inc. shall be without liability to Kimley-Horn and Associates, Inc.



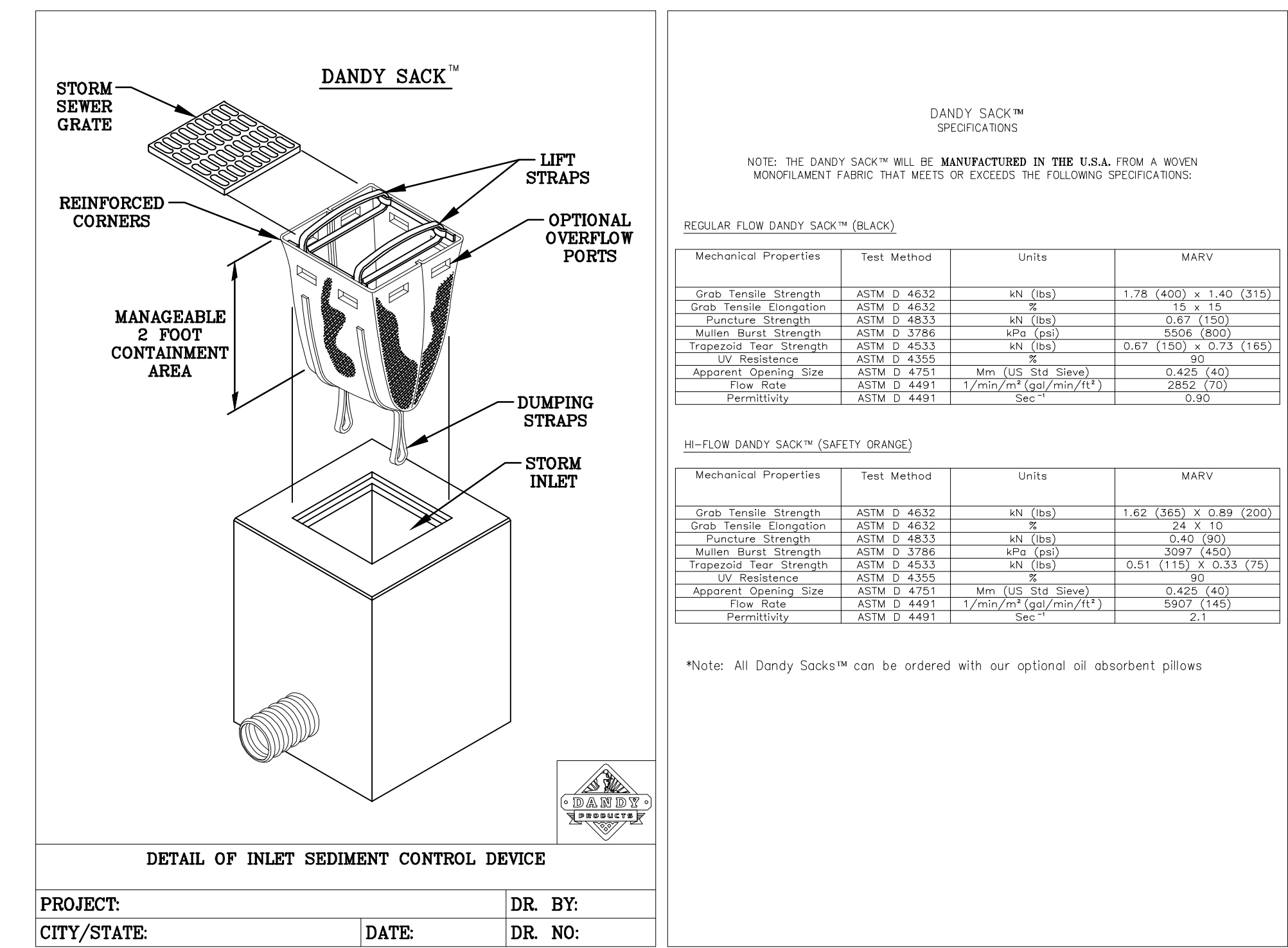
IDENT. NO.	DESCRIPTION	DATE	BY
	REVISION (OR CHANGE NOTICE)		
NEW MEXICO STATE HIGHWAY AND TRANSPORTATION DEPARTMENT			
SILT FENCE			

SHEET NO. 3 OF 7



IDENT. NO.	DESCRIPTION	DATE	BY
	REVISION (OR CHANGE NOTICE)		
NEW MEXICO STATE HIGHWAY AND TRANSPORTATION DEPARTMENT			
OFFSITE TRACKING PREVENTION & DIVERSION DIKE			

SHEET NO. 7 OF 7



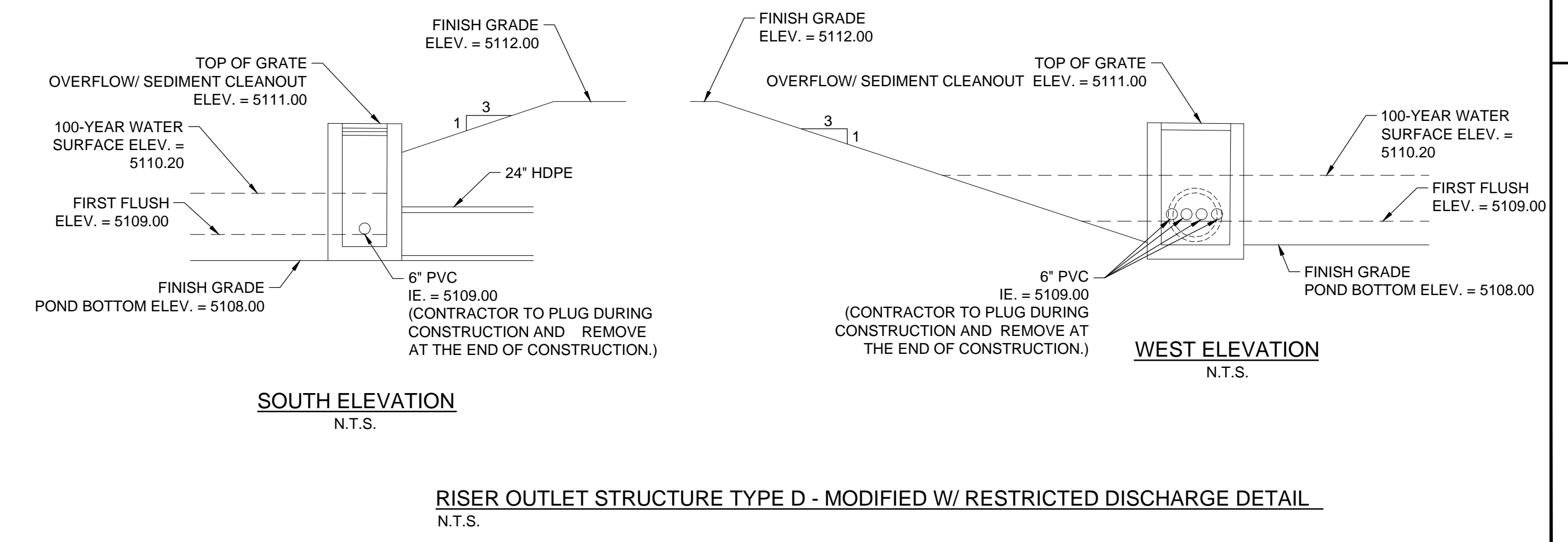
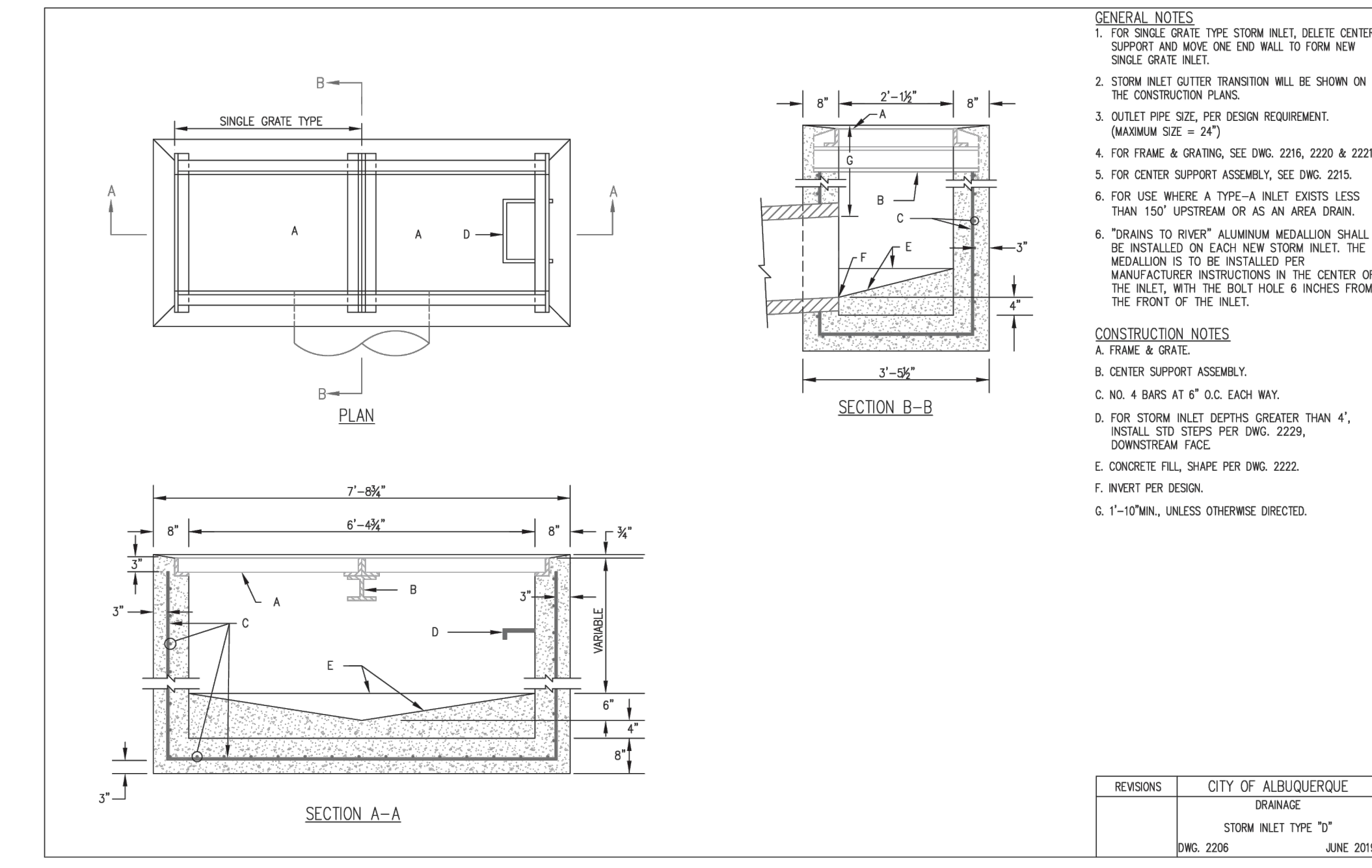
DANDY SACK™ SPECIFICATIONS

NOTE: THE DANDY SACK™ WILL BE MANUFACTURED IN THE U.S.A. FROM A WOVEN MONOFILAMENT FABRIC THAT MEETS OR EXCEEDS THE FOLLOWING SPECIFICATIONS:

Mechanical Properties	Test Method	Units	MARV
Grab Tensile Strength	ASTM D 4632	kN (lbf)	1.78 (400) x 1.40 (315)
Grab Tensile Elongation	ASTM D 4632	%	15 x 15
Puncture Strength	ASTM D 4833	kN (lbf)	0.47 (100)
Mullen Burst Strength	ASTM D 3786	kPa (psi)	5500 (800)
Trapezoidal Tear Strength	ASTM D 4253	kN (lbf)	0.67 (150) x 0.73 (165)
UV Resistance	ASTM D 4355	%	90
Apparent Opening Size	ASTM D 4751	Mm (US Std Sieve)	0.425 (40)
Flow Rate	ASTM D 4491	l/min/m² (gal/min/ft²)	2852 (70)
Permeability	ASTM D 4491	Sec⁻¹	0.90

Mechanical Properties	Test Method	Units	MARV
Grab Tensile Strength	ASTM D 4632	kN (lbf)	1.62 (365) x 0.89 (200)
Grab Tensile Elongation	ASTM D 4632	%	24 x 10
Puncture Strength	ASTM D 4833	kN (lbf)	0.40 (90)
Mullen Burst Strength	ASTM D 3786	kPa (psi)	3097 (450)
Trapezoidal Tear Strength	ASTM D 4253	kN (lbf)	0.51 (115) x 0.33 (75)
UV Resistance	ASTM D 4355	%	90
Apparent Opening Size	ASTM D 4751	Mm (US Std Sieve)	0.425 (40)
Flow Rate	ASTM D 4491	l/min/m² (gal/min/ft²)	5907 (145)
Permeability	ASTM D 4491	Sec⁻¹	2.1

*Note: All Dandy Sacks™ can be ordered with our optional oil absorbent pillows



KHA PROJECT	195737352	DATE	2/9/2026	SCALE	AS SHOWN	DESIGNED BY	FH	AD	JB	CHECKED BY	
EROSION CONTROL DETAILS											
ALBUQUERQUE, NM PREPARED FOR TARGET CORPORATION											
CITY OF ALBUQUERQUE											
SHEET NUMBER C302											



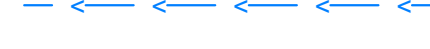

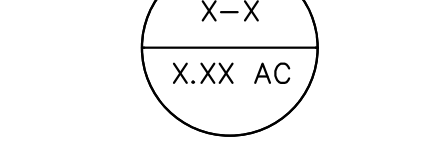

KHA
CC 39116
1

REVISIONS
DATE
BY

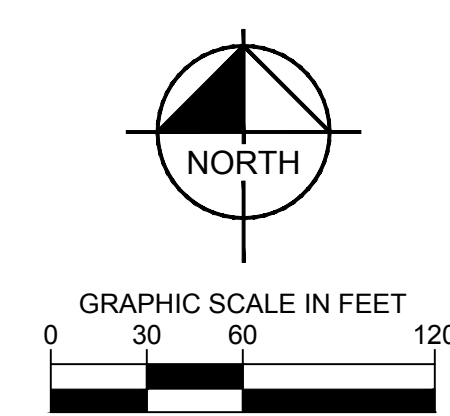
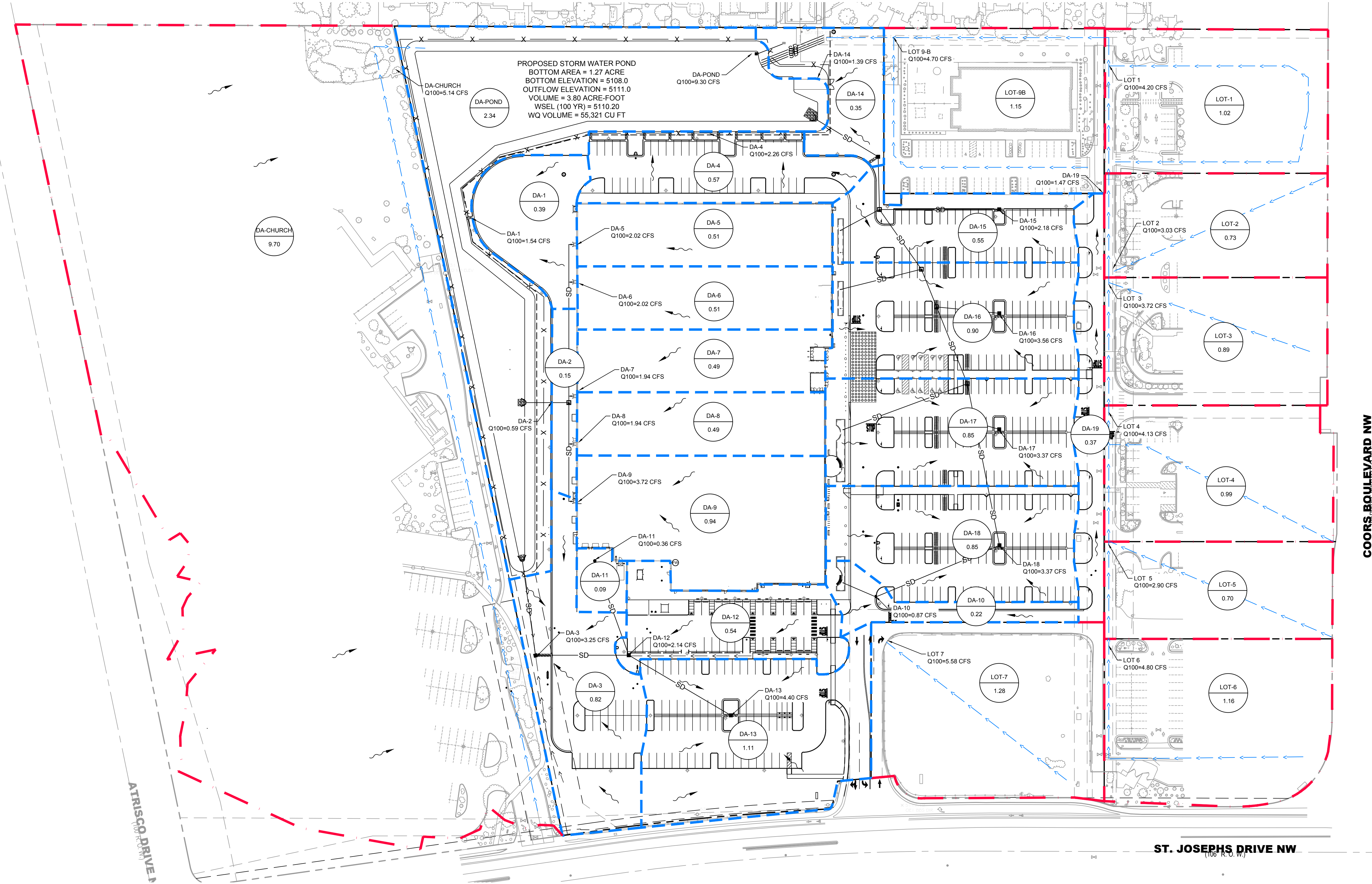
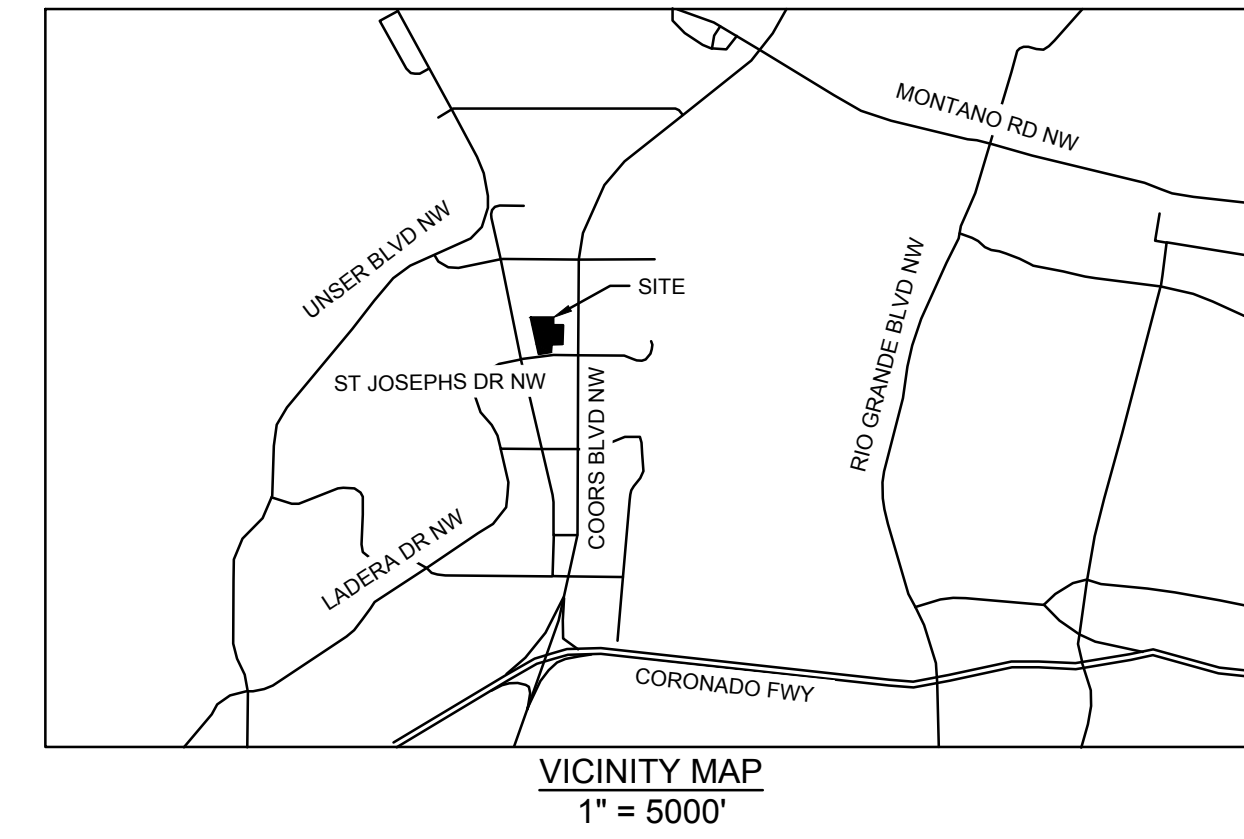
KIMLEY-HORN
© F&B-26 KIMLEY-HORN AND ASSOCIATES, INC.
401 B STREET, SUITE 600, SAN DIEGO, CA 92101
PHONE: 619-234-9411 FAX: 714-538-9468
WWW.KIMLEY-HORN.COM

Plotted By: Hernandez, Francisco Sheet Set: KHA - Layout: PROP - EX - February 09, 2026 12:36:54pm K:\SND\LOBA\TARGET\Target - Albuquerque NM Engineering\Drainage\Drainage Exhibits\WATERSHED BASIN MAP.dwg
 This document, together with the concepts and designs presented herein, is intended only for the specific purpose and client for which it was prepared. Reuse of and improper reliance on this document without written authorization and adaptation by Kimley-Horn and Associates, Inc. shall be without liability to Kimley-Horn and Associates, Inc.

LEGEND

-  ONSITE BASIN BOUNDARY
-  OFFSITE BASIN BOUNDARY
-  FLOW PATH
-  PROPOSED STORM DRAIN ROUTING
-  BASIN ID
AREA (AC)
-  FLOW ARROW

Proposed Drainage Area	Area (AC)	Land Treatment Type %				Unit Q (CFS/AC)	Q100 (CFS)
		A	B	C	D		
DA-1	0.39	0	5	5	90	3.96	1.54
DA-2	0.15	0	5	5	90	3.96	0.59
DA-3	0.82	0	5	5	90	3.96	3.25
DA-4	0.57	0	5	5	90	3.96	2.26
DA-5	0.51	0	5	5	90	3.96	2.02
DA-6	0.51	0	5	5	90	3.96	2.02
DA-7	0.49	0	5	5	90	3.96	1.94
DA-8	0.49	0	5	5	90	3.96	1.94
DA-9	0.94	0	5	5	90	3.96	3.72
DA-10	0.22	0	5	5	90	3.96	0.87
DA-11	0.09	0	5	5	90	3.96	0.36
DA-12	0.54	0	5	5	90	3.96	2.14
DA-13	1.11	0	5	5	90	3.96	4.40
DA-14	0.35	0	5	5	90	3.96	1.39
DA-15	0.55	0	5	5	90	3.96	2.18
DA-16	0.90	0	5	5	90	3.96	3.56
DA-17	0.85	0	5	5	90	3.96	3.37
DA-18	0.85	0	5	5	90	3.96	3.37
DA-19 (Offsite)	0.37	0	5	5	90	3.96	1.47
DA-POND	2.35	0	5	5	90	3.96	9.30
DA-CHURCH	9.70	-	-	-	-	-	5.14



08/28/2025	KHA
CC 39116	
1	No.
	REVISIONS
	DATE
	BY

Kimley-Horn
 © Feb-26 KIMLEY-HORN AND ASSOCIATES, INC.
 401 B STREET, SUITE 600, SAN DIEGO, CA 92101
 PHONE: 619-234-9411 FAX: 714-538-9468
 WWW.KIMLEY-HORN.COM

FRANCISCO HERNADEZ, P.E.
 30249
 PROFESSIONAL ENGINEER
 DATE: 2/9/2026

KHA PROJECT	195737352
DATE	2/9/2026
SCALE	AS SHOWN
DESIGNED BY	FH
DRAWN BY	AD
CHECKED BY	JB

**EROSION CONTROL
 WATERSHED
 BASIN MAP**

**ALBUQUERQUE, NM
 PREPARED FOR
 TARGET CORPORATION**

SHEET NUMBER
C304

NEW MEXICO
 CITY OF ALBUQUERQUE