

# CITY OF ALBUQUERQUE

Planning Department  
Alan Varela, Director



Mayor Timothy M. Keller

December 12, 2025

Francisco Hernandez  
Kimley-Horn and Associates, Inc.  
401 B Street, Suite 600  
San Diego, CA 92101

**RE: Target Albuquerque West  
5801 St. Josephs Drive NW  
Grading and Drainage Plans and Drainage Report  
Engineer's Stamp Date – Plans: 11/17/2025  
Engineer's Stamp Date – Report: 11/17/2025  
Hydrology File: G11D069F  
Case # HYDR-2025-00246**

Dear Mr. Hernandez:

PO Box 1293

Based upon the information provided in your submittal received 11/17/2025, the Grading & Drainage Plans and Drainage Report are approved for Grading Permit or Building Permit.

Albuquerque

**PRIOR TO CERTIFICATE OF OCCUPANCY:**

NM 87103

1. Engineer's Certification, per the DPM Part 6-14 (F): *Engineer's Certification Checklist For Non-Subdivision* is required.
2. Please provide the executed paper Drainage Covenant (latest revision) printed on one-side only with Exhibit A and a check for **\$25.00** made out to "**Bernalillo County**" for the detention pond per Article 6-15(C) of the DPM to Hydrology for review at Plaza de Sol. Electronic submittal to ABQ-PLAN is also required.

www.cabq.gov

As a reminder, if the project total area of disturbance (including the staging area and any work within the adjacent Right-of-Way) is 1 acre or more, then an Erosion and Sediment Control (ESC) Plan and Owner's certified Notice of Intent (NOI) is required to be submitted to the Stormwater Quality Engineer (Doug Hughes, PE, [jhughes@cabq.gov](mailto:jhughes@cabq.gov), 505-924-3420) 14 days prior to any earth disturbance.

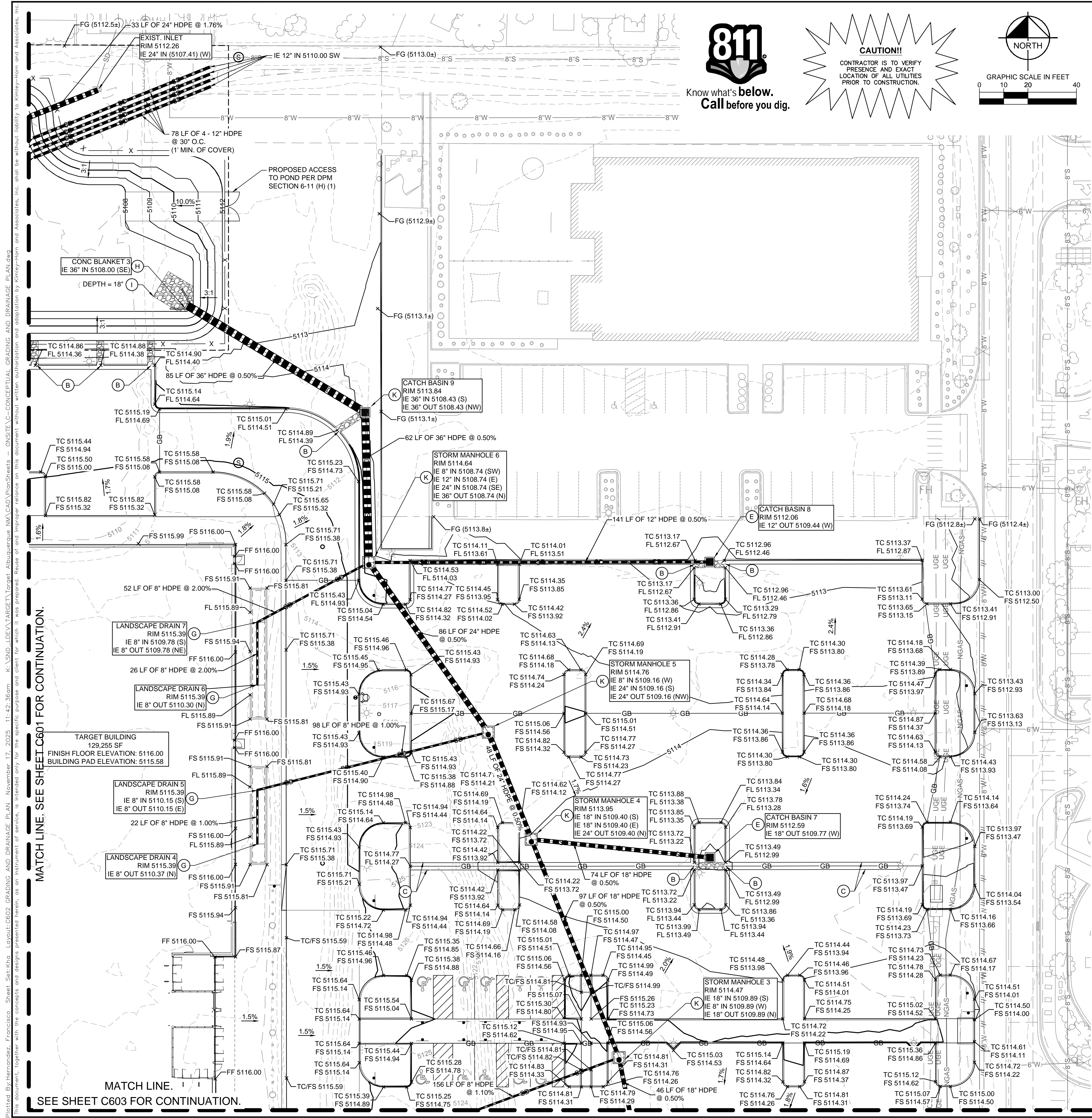
If you have any questions, please contact me at 505-924-3314 or [amontoya@cabq.gov](mailto:amontoya@cabq.gov).

Sincerely,

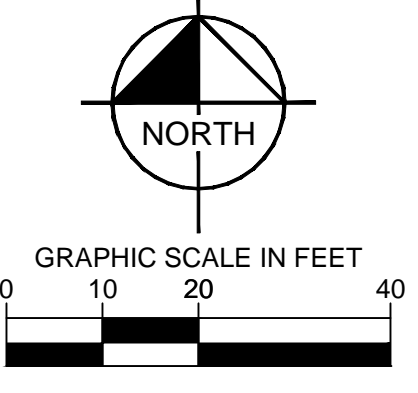
Anthony Montoya, Jr., P.E., C.F.M.  
Senior Engineer, Hydrology  
Planning Department, Development Review Services







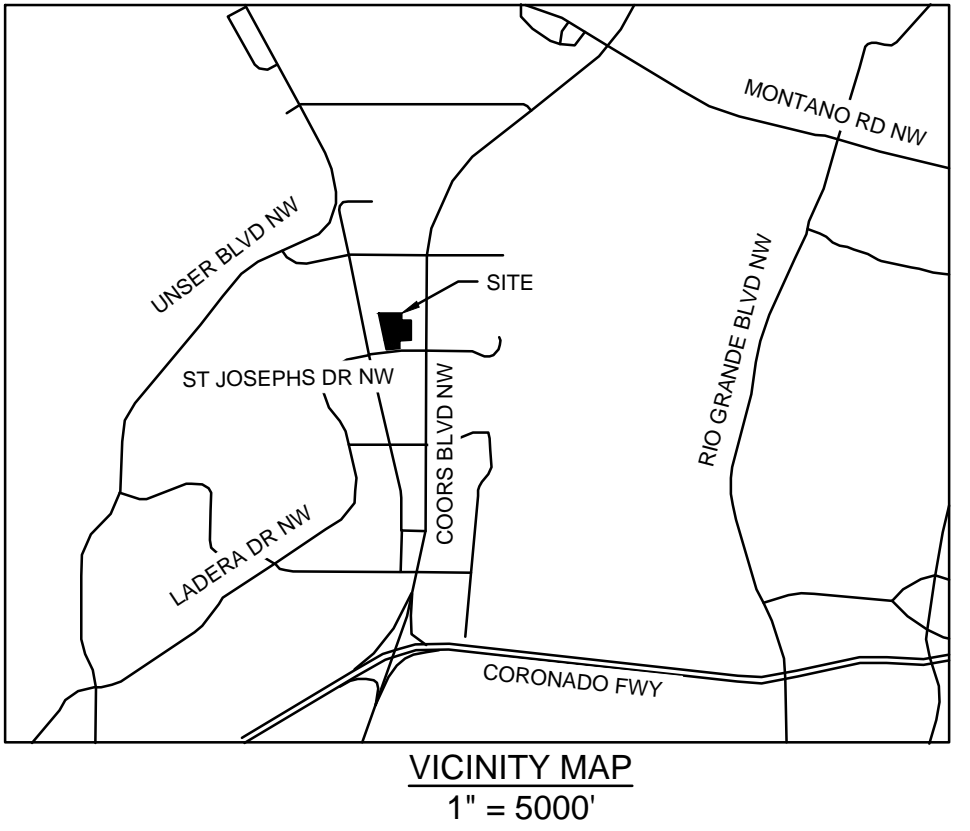
**CAUTION!**  
CONTRACTOR IS TO VERIFY PRESENCE AND EXACT LOCATION OF ALL UTILITIES PRIOR TO CONSTRUCTION.



City of Albuquerque  
Planning Department  
Development Review Services  
**HYDROLOGY SECTION**  
**APPROVED**

DATE: 12-12-2025  
BY: *[Signature]*  
HydroTeam # G11D069F

THE APPROVAL OF THESE PLANS/REPORTS SHALL NOT BE CONSTRUED TO BE A GUARANTEE OF ANY CITY ORDINANCE OR STATE LAW, AND SHALL NOT PREVENT THE CITY OF ALBUQUERQUE FROM REQUIRING CORRECTIONS FOR ERRORS OR OMISSIONS IN PLANS, SPECIFICATIONS, OR CONSTRUCTION DOCUMENTS. SUCH APPROVED PLANS/REPORTS SHALL NOT BE CHANGED, MODIFIED OR ALTERED WITHOUT AUTHORIZATION.  
THE APPROVAL OF THESE PLANS/REPORTS SHALL EXPIRE TWO (2) YEARS AFTER THE APPROVAL DATE IF NO BUILDING PERMIT HAS BEEN FILED ON THE DEVELOPMENT.



**GRADING AND DRAINAGE LEGEND**

---	PROPOSED PROPERTY LINE	▭	CONCRETE BLANKET
-GB-	GRADE BREAK	▭	RIP RAP
---	PROPOSED STORM LINE	TC	TOP OF CURB
---	EXISTING CONTOUR	FF	FINISH FLOOR
---	PROPOSED CONTOUR	FS	FINISH SURFACE
---	PROPOSED FLOW ARROW WITH SLOPE	FG	FINISH GRADE
x 24.50	PROPOSED SPOT ELEVATION	FL	FLOW LINE
---	PROPOSED DRAINAGE EASEMENT	TG	TOP OF GRATE
---	VEGETATED SWALE	▭	STORM INLET

**GRADING AND DRAINAGE KEYNOTES**

(A)	NYLOPLAST 18" DRAIN BASIN WITH 2X3 CURB INLET GRATE. SEE DETAIL ON SHEET C605 - GRADING AND DRAINAGE DETAILS.
(B)	PROPOSED 3' WIDE DRAINAGE CURB CUT. SEE DETAIL SHEET C605 - GRADING AND DRAINAGE DETAILS.
(C)	PROPOSED VALLEY GUTTER. SEE DETAIL SHEET C605 - GRADING AND DRAINAGE DETAILS.
(D)	ROOF DRAIN POINT OF CONNECTION. REFER TO MEP PLANS FOR CONTINUATION.
(E)	NYLOPLAST 24" DRAIN BASIN WITH 3X3 GRATE. SEE DETAIL SHEET C605 - GRADING AND DRAINAGE DETAILS.
(F)	VEGETATED SWALE. SEE DETAIL SHEET C605 - GRADING AND DRAINAGE DETAILS.
(G)	NDS 6" ATRIUM GRATE. SEE DETAIL ON SHEET C605 - GRADING AND DRAINAGE DETAILS.
(H)	SINGLE HDPE PIPE CONCRETE BLANKET. SEE DETAIL ON SHEET C606 - GRADING AND DRAINAGE DETAILS.
(I)	RIP-RAP TYPE L - 9" LAYER OF GRANULAR TYPE 2 BEDDING; DEPTH PER PLAN.
(J)	RISER OUTLET STRUCTURE TYPE D PER CITY OF ALBUQUERQUE STD DWG. 2206 - MODIFIED W/ RESTRICTED DISCHARGE. SEE DETAIL ON SHEET C606 - GRADING AND DRAINAGE DETAILS.
(K)	STORM SEWER MANHOLE TYPE C PER CITY OF ALBUQUERQUE STD DWG. 2206. SEE DETAIL ON SHEET C605 - GRADING AND DRAINAGE DETAILS.
(L)	TRUCK DOCK CATCH BASIN. SEE STRUCTURAL PLANS FOR MORE INFORMATION.

- GRADING AND DRAINAGE NOTES**
- ALL CONSTRUCTION TO BE IN ACCORDANCE WITH THESE PLANS AND THE CITY/AHJ STANDARDS AND SPECIFICATIONS.
  - PRIOR TO STARTING CONSTRUCTION, THE CONTRACTOR SHALL MAKE CERTAIN THAT ALL REQUIRED PERMITS AND APPROVALS HAVE BEEN OBTAINED. NO CONSTRUCTION OR FABRICATION SHALL BEGIN UNTIL THE CONTRACTOR HAS RECEIVED AND THOROUGHLY REVIEWED ALL PLANS AND OTHER DOCUMENTS APPROVED BY ALL OF THE PERMITTING AUTHORITIES.
  - THE GENERAL CONTRACTOR AND ALL SUB-CONTRACTORS SHALL VERIFY THE SUITABILITY OF ALL EXISTING AND PROPOSED SITE CONDITIONS INCLUDING GRADES AND DIMENSIONS BEFORE COMMENCING ANY CONSTRUCTION. THE ENGINEER SHALL BE NOTIFIED IMMEDIATELY OF ANY DISCREPANCIES. MINOR ADJUSTMENTS TO FINISH GRADE TO ACCOMPLISH SPOT DRAINAGE ARE ACCEPTABLE. IF NECESSARY, UPON PRIOR APPROVAL OF ENGINEER, PAVING INSTALLED SHALL "FLUSH OUT" AT ANY JUNCTURE WITH EXISTING PAVING.
  - THE CONTRACTOR IS SPECIFICALLY CAUTIONED THAT THE LOCATION AND/OR ELEVATION OF EXISTING UTILITIES AS SHOWN ON THESE PLANS IS BASED ON RECORDS OF THE VARIOUS UTILITY COMPANIES, AND WHERE POSSIBLE, MEASUREMENTS TAKEN IN THE FIELD. THE INFORMATION IS NOT TO BE RELIED ON AS BEING EXACT OR COMPLETE. THE CONTRACTOR MUST CALL THE APPROPRIATE UTILITY COMPANIES AT LEAST 72 HOURS BEFORE ANY EXCAVATION TO REQUEST EXACT FIELD LOCATION OF UTILITIES. IT SHALL BE THE RESPONSIBILITY OF THE CONTRACTOR TO RELOCATE ALL EXISTING UTILITIES WHICH CONFLICT WITH THE PROPOSED IMPROVEMENTS SHOWN ON THE PLANS.
  - ALL CUT OR FILL SLOPES SHALL BE 4:1 OR FLATTER UNLESS OTHERWISE NOTED.
  - CONTRACTOR SHALL ADJUST AND/OR CUT EXISTING PAVEMENT AS NECESSARY TO ASSURE A SMOOTH FIT AND CONTINUOUS GRADE.
  - CONTRACTOR SHALL ASSURE POSITIVE DRAINAGE AWAY FROM BUILDINGS FOR ALL NATURAL AND PAVED AREAS.
  - TOPOGRAPHIC INFORMATION IS TAKEN FROM A TOPOGRAPHIC SURVEY BY LAND SURVEYORS. IF THE CONTRACTOR DOES NOT ACCEPT EXISTING TOPOGRAPHY AS SHOWN ON THE PLANS, WITHOUT EXCEPTION, THEN THE CONTRACTOR SHALL SUPPLY, AT THEIR EXPENSE, A TOPOGRAPHIC SURVEY BY A REGISTERED LAND SURVEYOR TO THE OWNER FOR REVIEW.
  - CONTRACTOR SHALL REFER TO ARCHITECTURAL PLANS FOR EXACT BUILDING FOOTPRINT DIMENSIONS.
  - CONTRACTOR SHALL REFER TO FINAL GEOTECH REPORT FOR BUILDING SUBGRADE AND SITE PREPARATION REQUIREMENTS.
  - CONTRACTOR SHALL ADJUST EXISTING VALVES, MANHOLE RIMS, ETC. AS NECESSARY TO MATCH FINISHED GRADE.
  - ALL ELEVATIONS ARE TOP OF PAVEMENT UNLESS NOTED OTHERWISE. TO GET TOP OF CURB ELEVATIONS ADD 6" TO THE ELEVATION SHOWN.
  - GRADING FOR ALL SIDEWALKS AND ACCESSIBLE ROUTES INCLUDING CROSSING DRIVEWAYS SHALL CONFORM TO ADA STANDARDS. SLOPES SHALL NOT EXCEED 5% LONGITUDINAL SLOPE OR 2% CROSS SLOPE. SIDEWALK ACCESS TO EXTERNAL BUILDING DOORS SHALL BE ADA COMPLIANT. CONTRACTOR SHALL NOTIFY ENGINEER IMMEDIATELY IF ADA CRITERIA CANNOT BE MET AT ANY LOCATION.
  - ANY PROPOSED CONTOURS SHOWN ARE APPROXIMATE. PROPOSED SPOT ELEVATIONS AND DESIGNATED GRADIENT ARE TO BE USED IN THE EVENT OF ANY DISCREPANCIES.
  - REFER TO EROSION CONTROL PLAN FOR EROSION CONTROL DEVICES TO BE INSTALLED PRIOR TO COMMENCING GRADING OPERATIONS.
  - ALL FILL TO BE PLACED SHALL BE IN ACCORDANCE WITH THE CURRENT APPLICABLE GEOTECHNICAL REPORT RECOMMENDATIONS.
  - SIDE SLOPES OF ALL DETENTION PONDS NEED TO BE STABILIZED WITH NATIVE GRASS SEED (PER CITY SPEC 1012) WITH AGGREGATE MULCH OR EQUAL (MUST SATISFY THE "FINAL STABILIZATION CRITERIA" CSP 2.2.14.B).

Plotted by Hernandez, Francisco. Sheet Set: KHA - Layout: C602. GRADING AND DRAINAGE PLAN. November 17, 2025. 11:42:36am. K:\NSD\_LEVA\_TARGET\Target - OnSite\C-CONCEPTUAL GRADING AND DRAINAGE PLAN.dwg  
 This document, together with the concepts and designs presented herein, is intended only for the specific purpose and client for which it was prepared. Reuse of this document without written authorization and adaptation by Kimley-Horn and Associates, Inc. shall be without liability to Kimley-Horn and Associates, Inc.

**Kimley-Horn**  
© Nov-25 KIMLEY-HORN AND ASSOCIATES, INC.  
401 B STREET, SUITE 600, SAN DIEGO, CA 92101  
PHONE: 619-234-9411 FAX: 714-536-9468  
WWW.KIMLEY-HORN.COM

Professional Engineer Seal: FRANCISCO HERNANDEZ III, 30249

DATE: 11/17/2025

SCALE: AS SHOWN

DESIGNED BY: FH

DRAWN BY: AD

CHECKED BY: JB

CC 39116

08/28/2025 KHA

REVISIONS: No. DATE BY

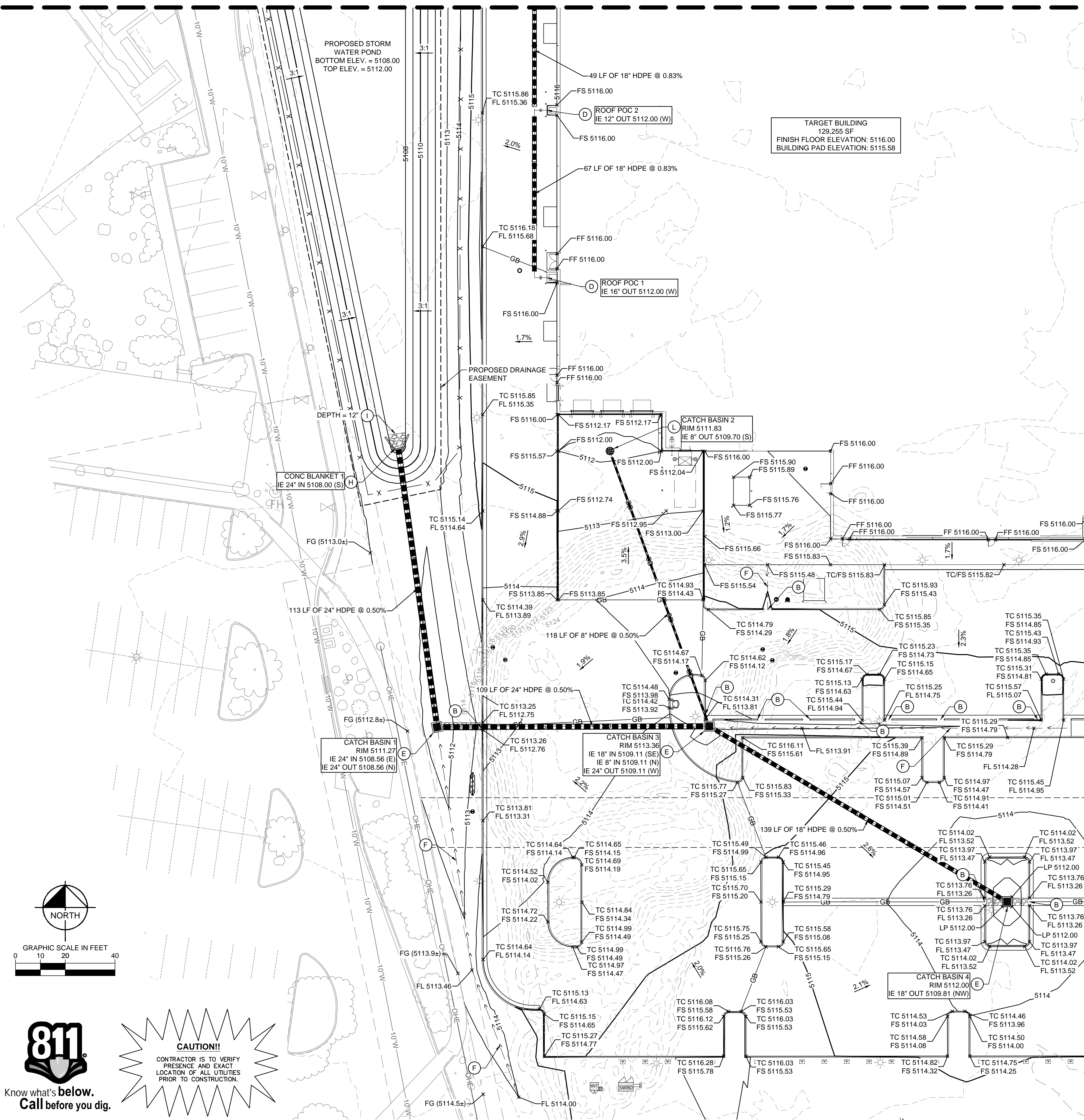
**ALBUQUERQUE, NM**  
PREPARED FOR  
**TARGET CORPORATION**  
CITY OF ALBUQUERQUE

SHEET NUMBER  
**C602**



Plotted By: Hernandez, Francisco. Sheet: C604. GRADING AND DRAINAGE PLAN. November 17, 2025. 11:42:56am. K:\VND\_LEVA\_TARGET\Target - OnSite\CG-CONCEPTUAL GRADING AND DRAINAGE PLAN.dwg  
 This document, together with the concepts and designs presented herein, is intended only for the specific purpose and client for which it was prepared. Reuse of and improper reliance on this document without written authorization and adaptation by Kimley-Horn and Associates, Inc. shall be without liability to Kimley-Horn and Associates, Inc.

MATCH LINE. SEE SHEET C601 FOR CONTINUATION.

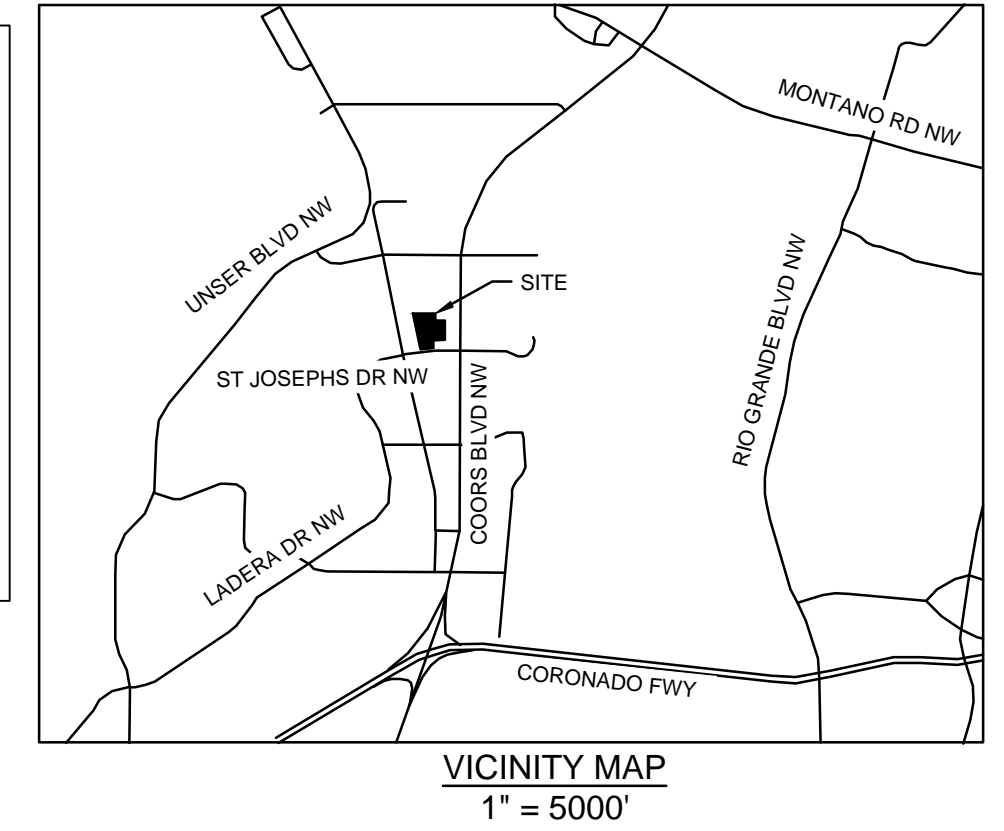


MATCH LINE. SEE SHEET C603 FOR CONTINUATION.

**City of Albuquerque**  
**Planning Department**  
**Development Review Services**  
**HYDROLOGY SECTION**  
**APPROVED**

DATE: 12-12-2025  
 BY: *[Signature]*  
 HydroTrans #: G11D069F

THE APPROVAL OF THESE PLANS/REPORTS SHALL NOT BE CONSIDERED TO  
 GUARANTEE THE ACCURACY OF THE INFORMATION OR TO ASSURE THE  
 COMPLIANCE WITH ALL CITY ORDINANCES OR STATE LAW, AND  
 CORRECTIONS FOR ERRORS OR OMISSIONS IN PLANS, SPECIFICATIONS,  
 OR CONDITIONS FOR CONTRACTS, SUCH AS APPROVAL AND ACCEPTANCE SHALL  
 NOT BE CHANGED, MODIFIED OR ALTERED WITHOUT AUTHORIZATION.  
 THE APPROVAL OF THESE PLANS/REPORTS SHALL EXPIRE TWO (2)  
 YEARS AFTER THE APPROVAL DATE IF NO BUILDING PERMIT HAS BEEN  
 FILED ON THE DEVELOPMENT.



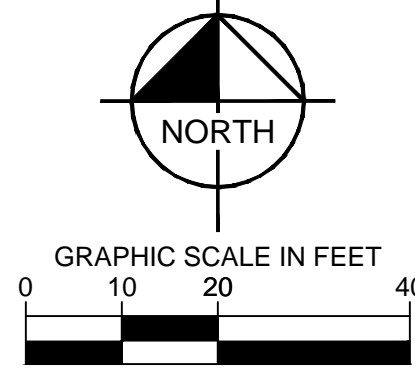
**GRADING AND DRAINAGE LEGEND**

	PROPOSED PROPERTY LINE		CONCRETE BLANKET
	GRADE BREAK		RIP RAP
	PROPOSED STORM LINE	TC	TOP OF CURB
	EXISTING CONTOUR	FF	FINISH FLOOR
	PROPOSED CONTOUR	FS	FINISH SURFACE
	PROPOSED FLOW ARROW WITH SLOPE	FG	FINISH GRADE
	PROPOSED SPOT ELEVATION	FL	FLOW LINE
	PROPOSED DRAINAGE EASEMENT	TG	TOP OF GRATE
	VEGETATED SWALE		STORM INLET

**GRADING AND DRAINAGE KEYNOTES**

(A)	NYLOPLAST 18" DRAIN BASIN WITH 2X3 CURB INLET GRATE. SEE DETAIL ON SHEET C605 - GRADING AND DRAINAGE DETAILS.
(B)	PROPOSED 3' WIDE DRAINAGE CURB CUT. SEE DETAIL SHEET C605 - GRADING AND DRAINAGE DETAILS.
(C)	PROPOSED VALLEY GUTTER. SEE DETAIL SHEET C605 - GRADING AND DRAINAGE DETAILS.
(D)	ROOF DRAIN POINT OF CONNECTION. REFER TO MEP PLANS FOR CONTINUATION
(E)	NYLOPLAST 24" DRAIN BASIN WITH 3X3 GRATE. SEE DETAIL SHEET C605 - GRADING AND DRAINAGE DETAILS.
(F)	VEGETATED SWALE. SEE DETAIL SHEET C605 - GRADING AND DRAINAGE DETAILS.
(G)	NDS 6" ATRIUM GRATE. SEE DETAIL ON SHEET C605 - GRADING AND DRAINAGE DETAILS.
(H)	SINGLE HDPE PIPE CONCRETE BLANKET. SEE DETAIL ON SHEET C606 - GRADING AND DRAINAGE DETAILS.
(I)	RIP-RAP TYPE L - 9" LAYER OF GRANULAR TYPE 2 BEDDING; DEPTH PER PLAN.
(J)	RISER OUTLET STRUCTURE TYPE D PER CITY OF ALBUQUERQUE STD DWG. 2206 - MODIFIED W/ RESTRICTED DISCHARGE. SEE DETAIL ON SHEET C606 - GRADING AND DRAINAGE DETAILS.
(K)	STORM SEWER MANHOLE TYPE C PER CITY OF ALBUQUERQUE STD DWG. 2206. SEE DETAIL ON SHEET C605 - GRADING AND DRAINAGE DETAILS.
(L)	TRUCK DOCK CATCH BASIN. SEE STRUCTURAL PLANS FOR MORE INFORMATION.

- GRADING AND DRAINAGE NOTES**
- ALL CONSTRUCTION TO BE IN ACCORDANCE WITH THESE PLANS AND THE CITY/AHJ STANDARDS AND SPECIFICATIONS.
  - PRIOR TO STARTING CONSTRUCTION, THE CONTRACTOR SHALL MAKE CERTAIN THAT ALL REQUIRED PERMITS AND APPROVALS HAVE BEEN OBTAINED. NO CONSTRUCTION OR FABRICATION SHALL BEGIN UNTIL THE CONTRACTOR HAS RECEIVED AND THOROUGHLY REVIEWED ALL PLANS AND OTHER DOCUMENTS APPROVED BY ALL OF THE PERMITTING AUTHORITIES.
  - THE GENERAL CONTRACTOR AND ALL SUB-CONTRACTORS SHALL VERIFY THE SUITABILITY OF ALL EXISTING AND PROPOSED SITE CONDITIONS INCLUDING GRADES AND DIMENSIONS BEFORE COMMENCEMENT OF ANY CONSTRUCTION. THE ENGINEER SHALL BE NOTIFIED IMMEDIATELY OF ANY DISCREPANCIES. MINOR ADJUSTMENTS TO FINISH GRADE TO ACCOMPLISH SPOT DRAINAGE ARE ACCEPTABLE, IF NECESSARY, UPON PRIOR APPROVAL OF ENGINEER. PAVING INSTALLED SHALL "FLUSH OUT" AT ANY JUNCTURE WITH EXISTING PAVING.
  - THE CONTRACTOR IS SPECIFICALLY CAUTIONED THAT THE LOCATION AND/OR ELEVATION OF EXISTING UTILITIES AS SHOWN ON THESE PLANS IS BASED ON RECORDS OF THE VARIOUS UTILITY COMPANIES, AND WHERE POSSIBLE, MEASUREMENTS TAKEN IN THE FIELD. THE INFORMATION IS NOT TO BE RELIED ON AS BEING EXACT OR COMPLETE. THE CONTRACTOR MUST CALL THE APPROPRIATE UTILITY COMPANIES AT LEAST 72 HOURS BEFORE ANY EXCAVATION TO REQUEST EXACT FIELD LOCATION OF UTILITIES. IT SHALL BE THE RESPONSIBILITY OF THE CONTRACTOR TO RELOCATE ALL EXISTING UTILITIES WHICH CONFLICT WITH THE PROPOSED IMPROVEMENTS SHOWN ON THE PLANS.
  - ALL CUT OR FILL SLOPES SHALL BE 4:1 OR FLATTER UNLESS OTHERWISE NOTED.
  - CONTRACTOR SHALL ADJUST AND/OR CUT EXISTING PAVEMENT AS NECESSARY TO ASSURE A SMOOTH FIT AND CONTINUOUS GRADE.
  - CONTRACTOR SHALL ASSURE POSITIVE DRAINAGE AWAY FROM BUILDINGS FOR ALL NATURAL AND PAVED AREAS.
  - TOPOGRAPHIC INFORMATION IS TAKEN FROM A TOPOGRAPHIC SURVEY BY LAND SURVEYORS. IF THE CONTRACTOR DOES NOT ACCEPT EXISTING TOPOGRAPHY AS SHOWN ON THE PLANS, WITHOUT EXCEPTION, THEN THE CONTRACTOR SHALL SUPPLY, AT THEIR EXPENSE, A TOPOGRAPHIC SURVEY BY A REGISTERED LAND SURVEYOR TO THE OWNER FOR REVIEW.
  - CONTRACTOR SHALL REFER TO ARCHITECTURAL PLANS FOR EXACT BUILDING FOOTPRINT DIMENSIONS.
  - CONTRACTOR SHALL REFER TO FINAL GEOTECH REPORT FOR BUILDING SUBGRADE AND SITE PREPARATION REQUIREMENTS.
  - CONTRACTOR SHALL ADJUST EXISTING VALVES, MANHOLE RIMS, ETC. AS NECESSARY TO MATCH FINISHED GRADE.
  - ALL ELEVATIONS ARE TOP OF PAVEMENT UNLESS NOTED OTHERWISE. TO GET TOP OF CURB ELEVATIONS ADD 6" TO THE ELEVATION SHOWN.
  - GRADING FOR ALL SIDEWALKS AND ACCESSIBLE ROUTES INCLUDING CROSSING DRIVEWAYS SHALL CONFORM TO ADA STANDARDS. SLOPES SHALL NOT EXCEED 5% LONGITUDINAL SLOPE OR 2% CROSS SLOPE. SIDEWALK ACCESS TO EXTERNAL BUILDING DOORS SHALL BE ADA COMPLIANT. CONTRACTOR SHALL NOTIFY ENGINEER IMMEDIATELY IF ADA CRITERIA CANNOT BE MET AT ANY LOCATION.
  - ANY PROPOSED CONTOURS SHOWN ARE APPROXIMATE. PROPOSED SPOT ELEVATIONS AND DESIGNATED GRADIENT ARE TO BE USED IN THE EVENT OF ANY DISCREPANCIES.
  - REFER TO EROSION CONTROL PLAN FOR EROSION CONTROL DEVICES TO BE INSTALLED PRIOR TO COMMENCING GRADING OPERATIONS.
  - ALL FILL TO BE PLACED SHALL BE IN ACCORDANCE WITH THE CURRENT APPLICABLE GEOTECHNICAL REPORT RECOMMENDATIONS.
  - SIDE SLOPES OF ALL DETENTION PONDS NEED TO BE STABILIZED WITH NATIVE GRASS SEED (PER CITY SPEC 1012) WITH AGGREGATE MULCH OR EQUAL (MUST SATISFY THE "FINAL STABILIZATION CRITERIA" CGP 2.2.14.B).



**CAUTION!!**  
 CONTRACTOR IS TO VERIFY  
 PRESENCE AND EXACT  
 LOCATION OF ALL UTILITIES  
 PRIOR TO CONSTRUCTION.

08/28/2025	KHA	BY
CC 39116		DATE
1		No.
		REVISIONS

**Kimley & Horn**  
 © Nov-25 KIMLEY-HORN AND ASSOCIATES, INC.  
 401 B STREET, SUITE 600, SAN DIEGO, CA 92101  
 PHONE: 619-234-9411 FAX: 714-539-9468  
 WWW.KIMLEY-HORN.COM

FRANCISCO HERNAZDEZ III  
 30249  
 PROFESSIONAL ENGINEER

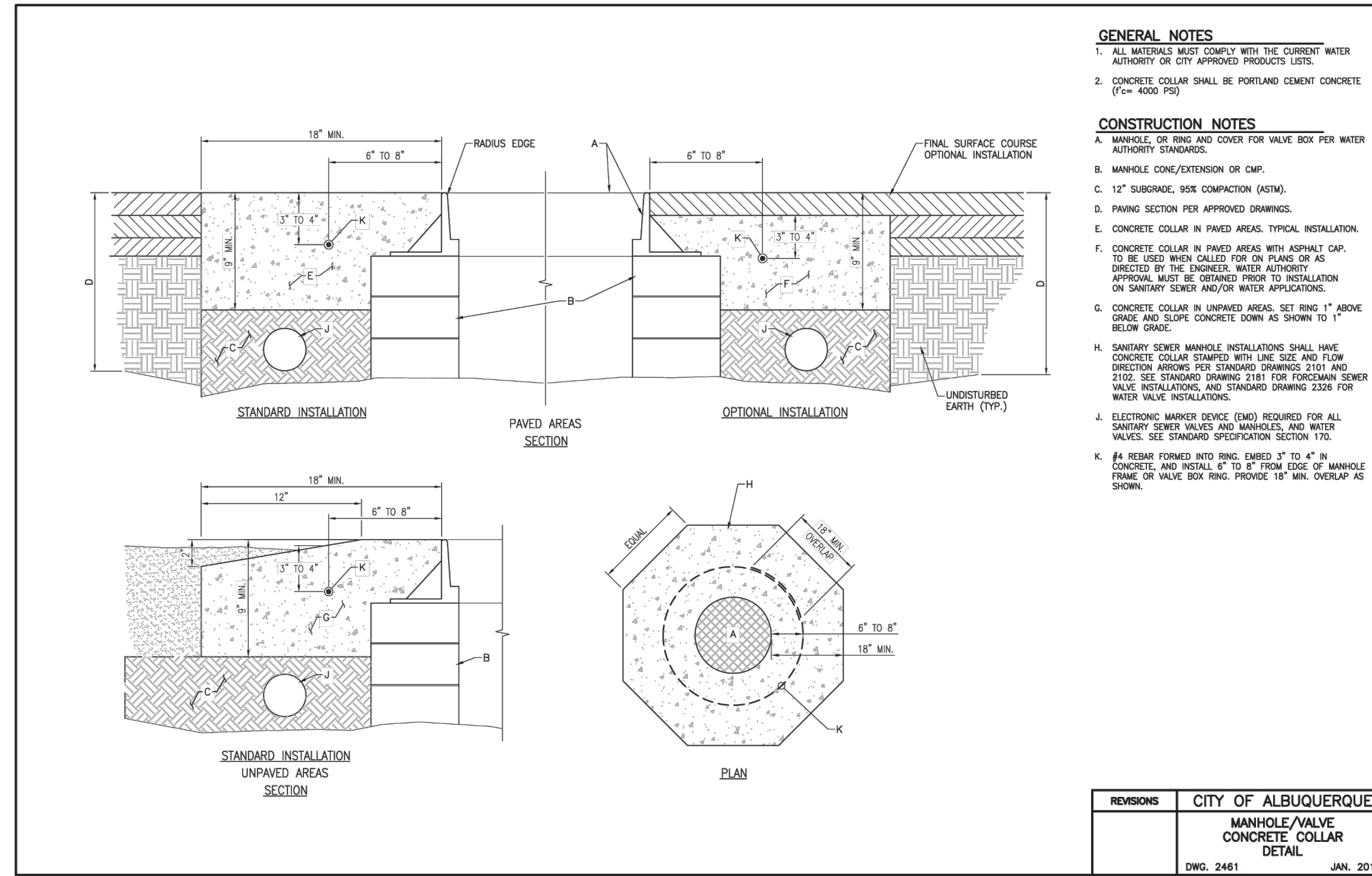
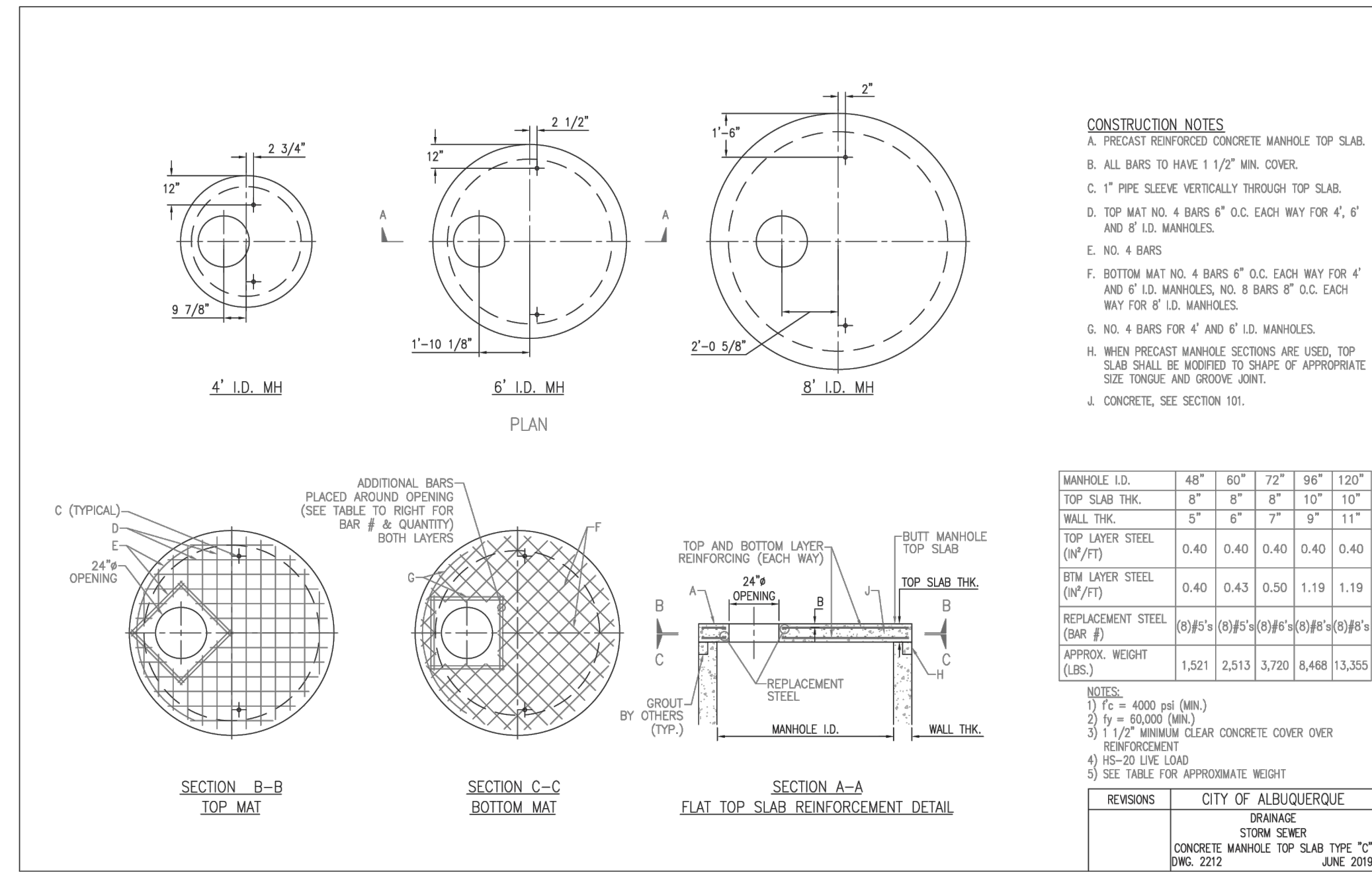
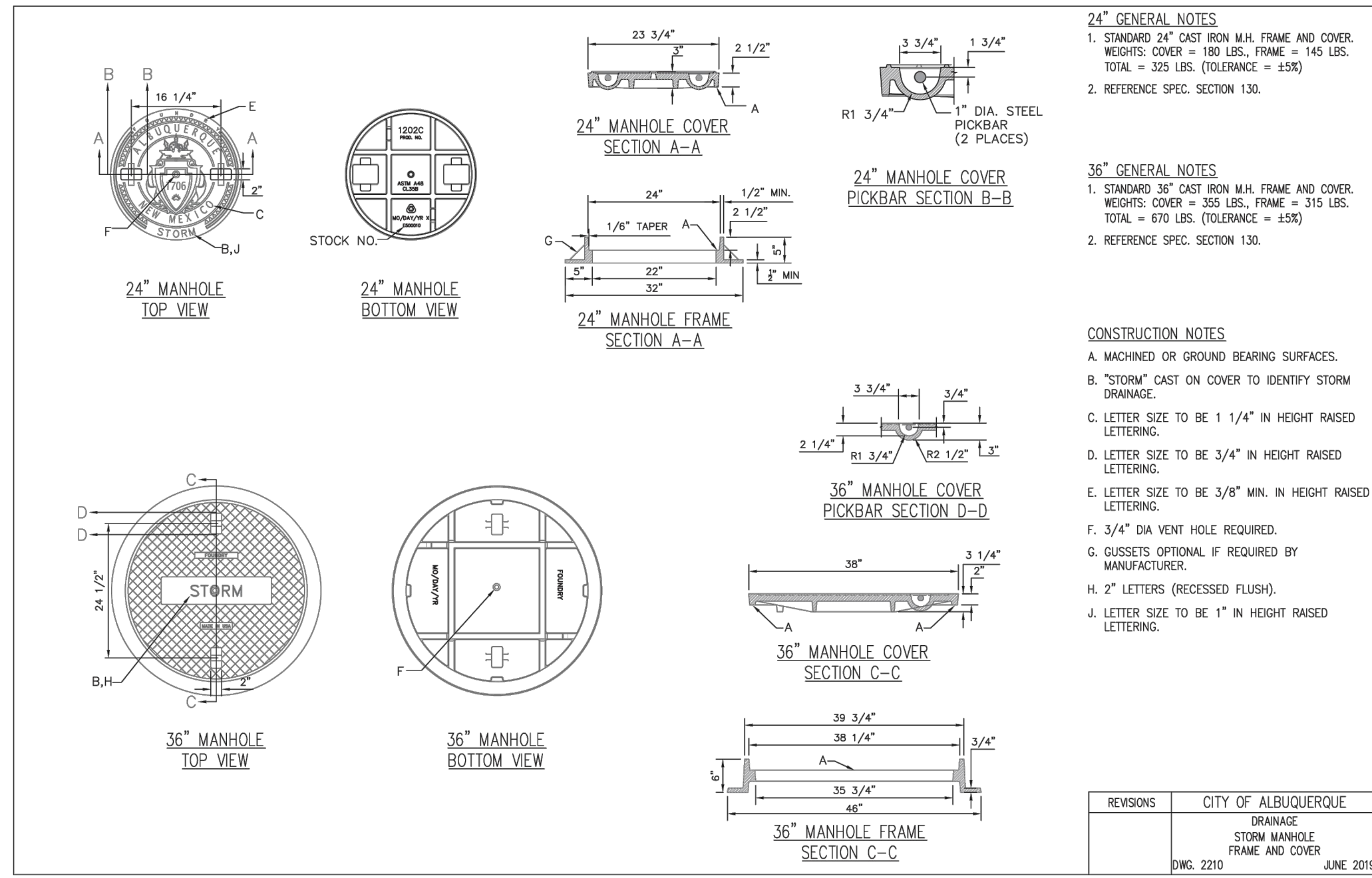
DATE: 11/17/2025  
 KHA PROJECT: 195737352  
 DATE: 11/17/2025  
 SCALE: AS SHOWN  
 DESIGNED BY: FHW  
 DRAWN BY: AD  
 CHECKED BY: JB

**GRADING AND DRAINAGE PLAN**  
**ALBUQUERQUE, NM**  
 PREPARED FOR  
**TARGET CORPORATION**  
 SHEET NUMBER  
**C604**  
 CITY OF ALBUQUERQUE





Plotted By: Hernandez, Francisco Sheet: Sct-Kim Layout: GRADING AND DRAINAGE DETAILS (3) November 17, 2025 11:45:43am k:\NSD-LDEV\TARGET\albuquerque\m\CAD\plansheets - onstia\C-CONCEPTUAL GRADING AND DRAINAGE PLAN.dwg  
 This document, together with the concepts and designs presented herein, is intended only for the specific purpose and client for which it was prepared. Reuse of and improper reliance on this document without written authorization and adaptation by Kimley-Horn and Associates, Inc. shall be without liability to Kimley-Horn and Associates, Inc.



Approved Master Drainage Plan Hydrologic Data

Proposed Drainage Area	Area (AC)	Land Treatment Type %				Unit Q (CFS/AC)	Q100 (CFS)
		A	B	C	D		
8A	2.05	0	5	5	90	4.13	8.50
8B	1.68	0	5	5	90	4.13	7.70
8C	2.03	0	5	5	90	4.13	8.40
9A	5.54	0	5	5	90	4.13	22.90
9C	1.56	0	5	5	90	4.13	6.40
Total	13.05						53.90

Proposed Hydrologic Data

Proposed Drainage Area	Area (AC)	Land Treatment Type %				Unit Q (CFS/AC)	Q100 (CFS)
		A	B	C	D		
DA-1	0.39	0	5	5	90	3.96	1.54
DA-2	0.15	0	5	5	90	3.96	0.59
DA-3	0.82	0	5	5	90	3.96	3.25
DA-4	0.57	0	5	5	90	3.96	2.26
DA-5	0.51	0	5	5	90	3.96	2.02
DA-6	0.51	0	5	5	90	3.96	2.02
DA-7	0.49	0	5	5	90	3.96	1.94
DA-8	0.49	0	5	5	90	3.96	1.94
DA-9	0.94	0	5	5	90	3.96	3.72
DA-10	0.22	0	5	5	90	3.96	0.87
DA-11	0.09	0	5	5	90	3.96	0.36
DA-12	0.54	0	5	5	90	3.96	2.14
DA-13	1.11	0	5	5	90	3.96	4.40
DA-14	0.35	0	5	5	90	3.96	1.39
DA-15	0.55	0	5	5	90	3.96	2.18
DA-16	0.90	0	5	5	90	3.96	3.56
DA-17	0.85	0	5	5	90	3.96	3.37
DA-18	0.85	0	5	5	90	3.96	3.37
DA-19 (Offsite)	0.37	0	5	5	90	3.96	1.47
DA-POND	2.35	0	5	5	90	3.96	9.30
Total	13.05						51.67

SAQVOL

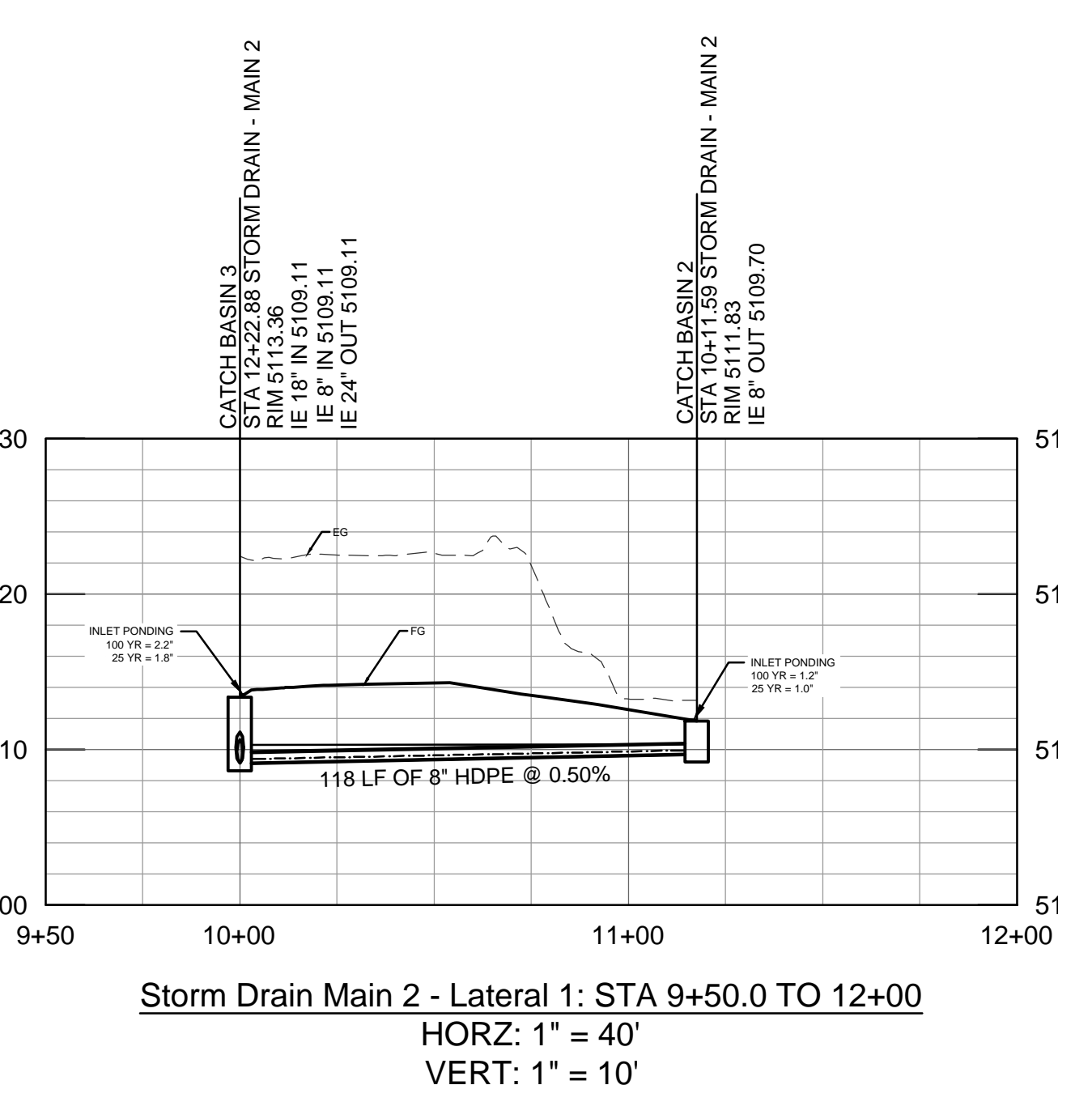
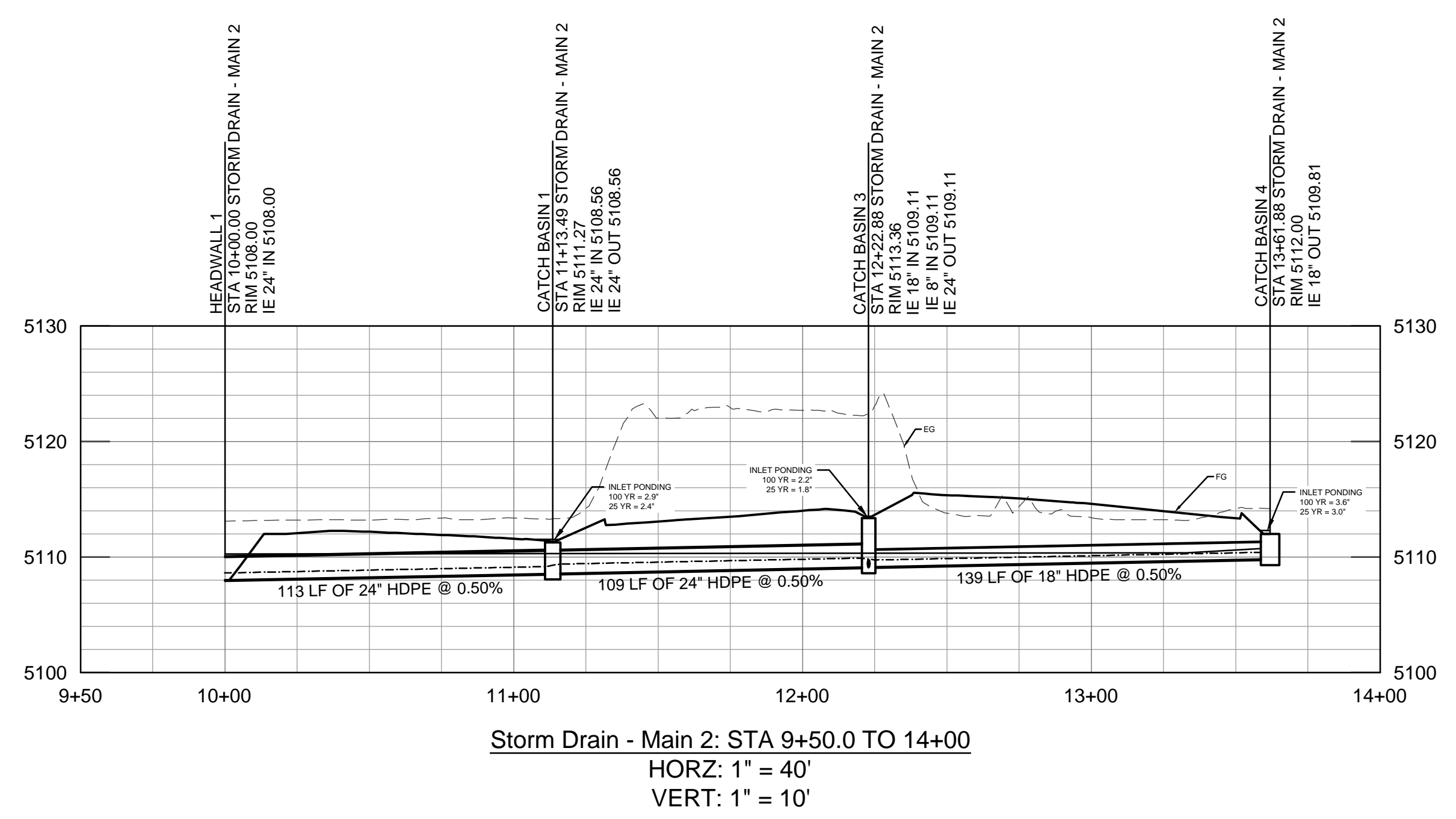
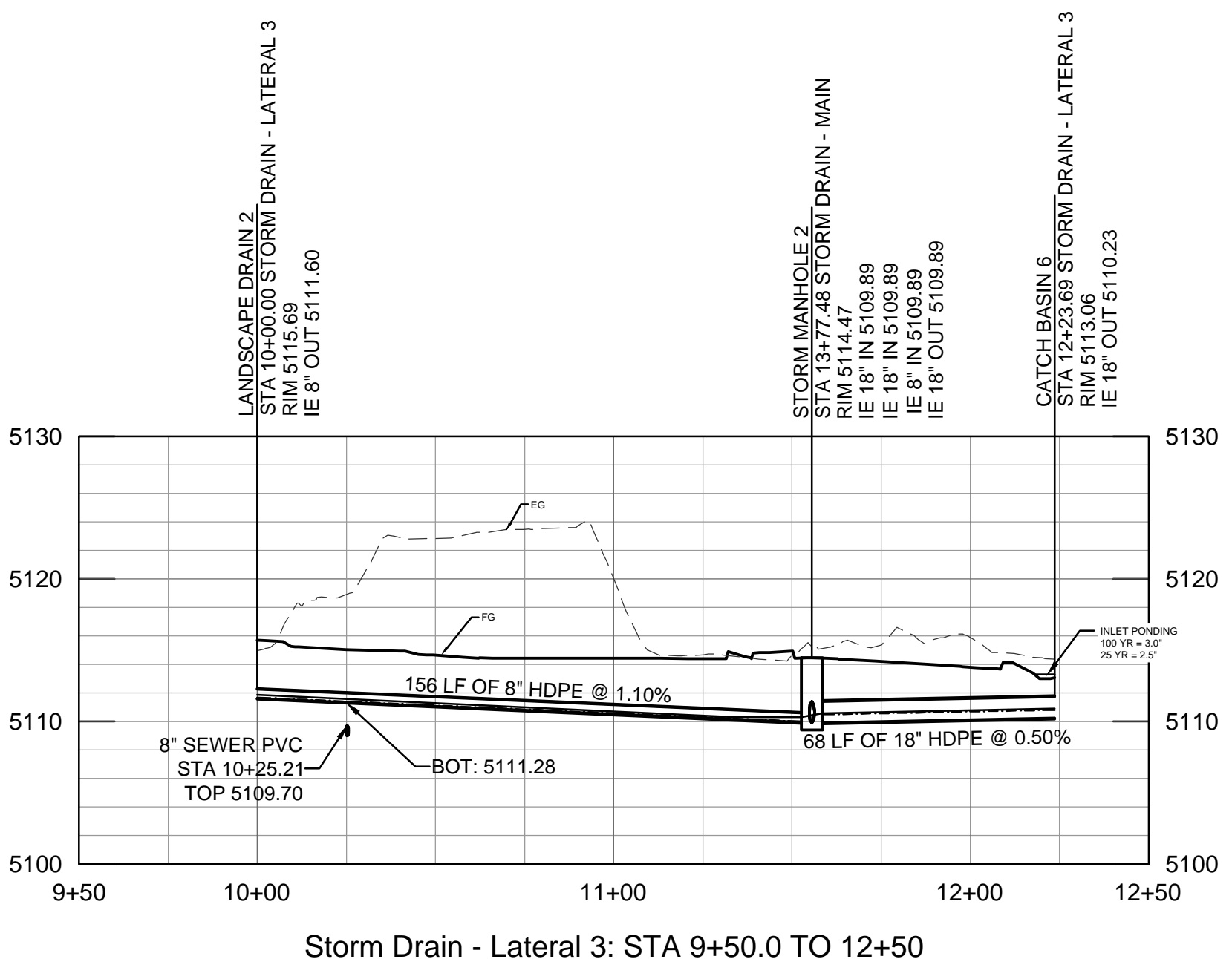
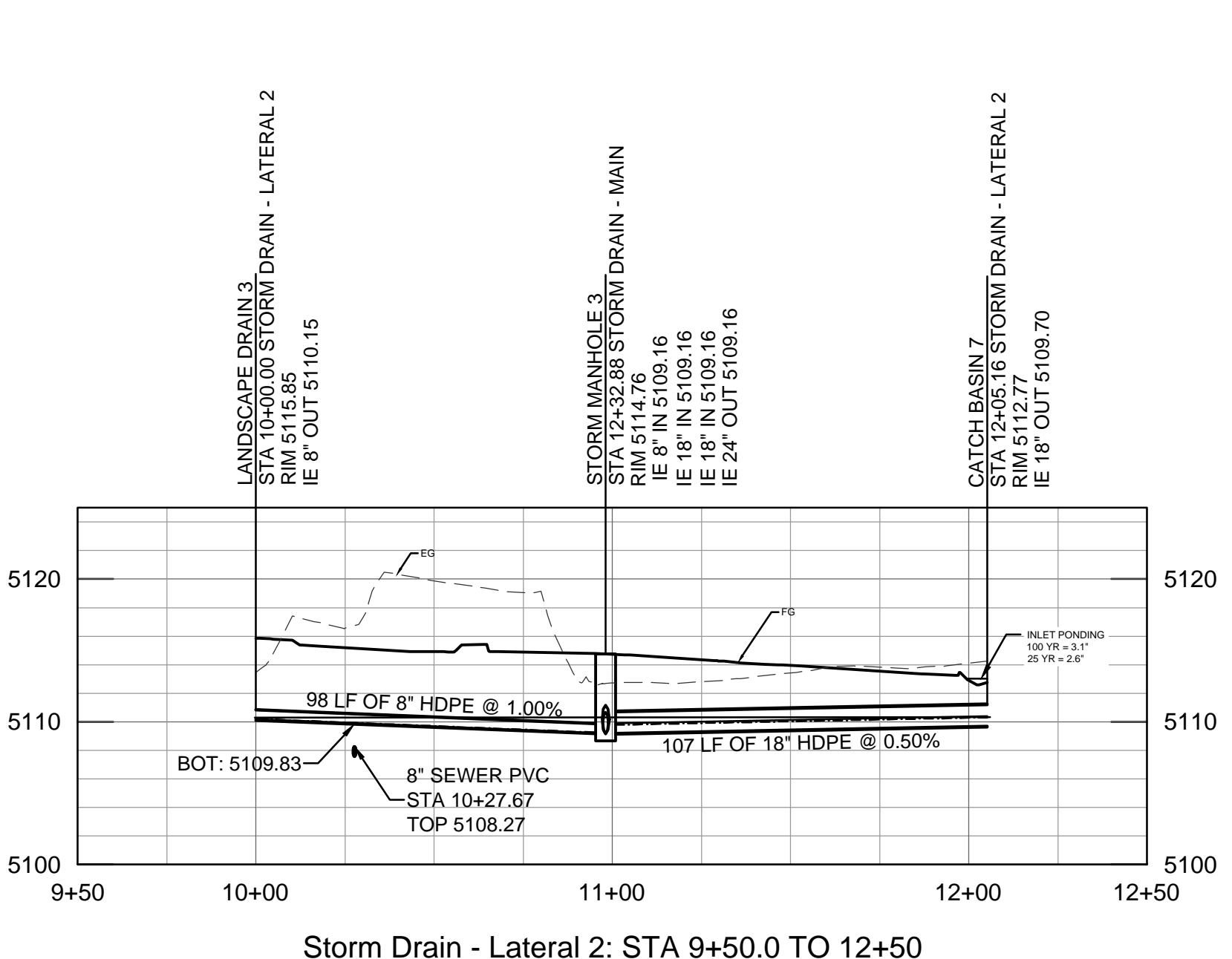
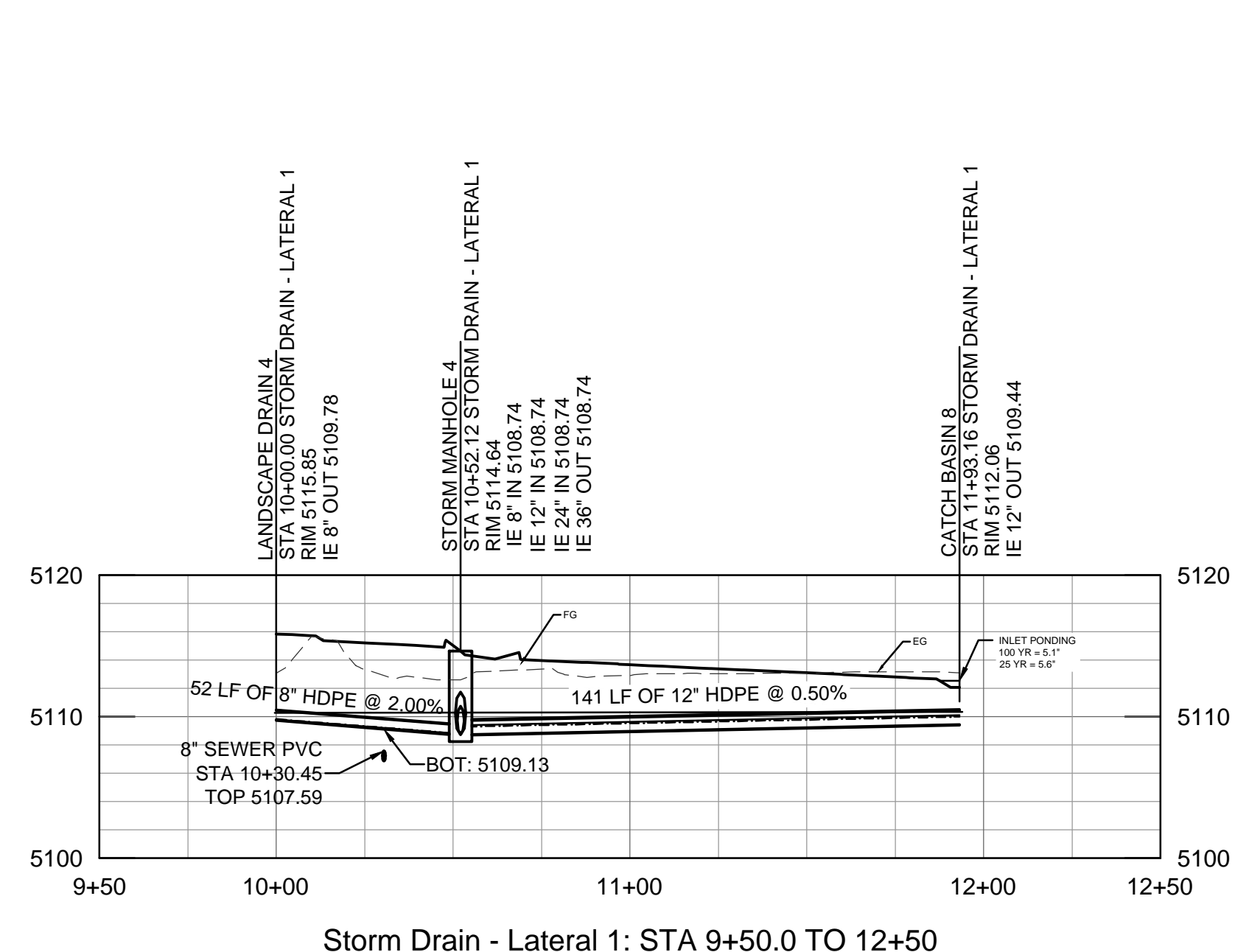
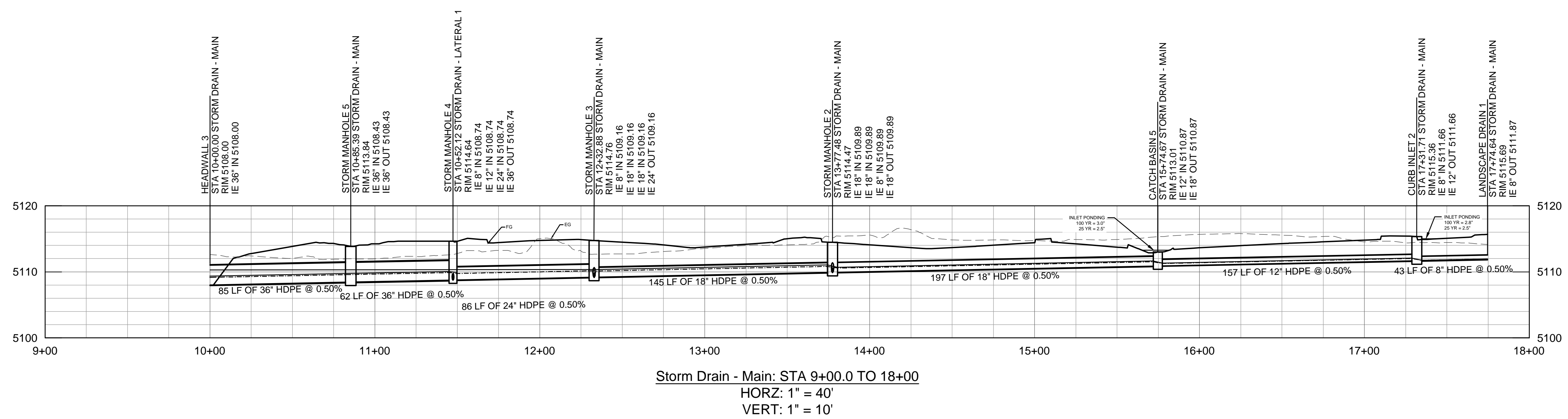
Impervious Area (SF)	391,394
SAQVOL Required (CF)*	13,699
SAQVOL Provided (CF)	55,321
*0.42 in per impervious SF	



KHA PROJECT 195737352	DATE 11/17/2025	SCALE AS SHOWN	DESIGNED BY FH	DRAWN BY AD	CHECKED BY JB
<b>GRADING AND DRAINAGE DETAILS &amp; CALCULATIONS</b>					
<b>ALBUQUERQUE, NM</b> PREPARED FOR <b>TARGET CORPORATION</b> CITY OF ALBUQUERQUE					
SHEET NUMBER <b>C607</b>					
CC 39116	08/28/2025	REVISIONS NO. BY DATE			

© Nov-25 KIMLEY-HORN AND ASSOCIATES, INC.  
 401 B STREET, SUITE 600, SAN DIEGO, CA 92101  
 PHONE: 619-234-9411 FAX: 714-536-9468  
 WWW.KIMLEY-HORN.COM

Plotted By: Hernandez, Francisco - Sheet Set: KHA - Layout: GRADING AND DRAINAGE PROFILES - November 17, 2025 11:44:05am - K:\NSND\_DEVELOPMENT\Target Albuquerque\KHA\plan\sheetsets - onslia\c-conceptual GRADING AND DRAINAGE PLAN.dwg  
 This document, together with the concepts and designs presented herein, is intended only for the specific purpose and client for which it was prepared. Reuse of and improper reliance on this document without written authorization and adaptation by Kimley-Horn and Associates, Inc. shall be without liability to Kimley-Horn and Associates, Inc.



**ALBUQUERQUE, NM**  
 PREPARED FOR  
**TARGET CORPORATION**  
 NEW MEXICO  
 CITY OF ALBUQUERQUE

**GRADING AND DRAINAGE PROFILES**

**Kimley-Horn**  
 © Nov-25 KIMLEY-HORN AND ASSOCIATES, INC.  
 401 B STREET, SUITE 600, SAN DIEGO, CA 92101  
 PHONE: 619-234-9411 FAX: 714-539-9466  
 WWW.KIMLEY-HORN.COM

CC 39116

08/28/2025

1

No.

REVISIONS

DATE

BY

KHA PROJECT 195737352

DATE 11/17/2025

SCALE AS SHOWN

DESIGNED BY FH

DRAWN BY AD

CHECKED BY JB

SHEET NUMBER  
**C608**

