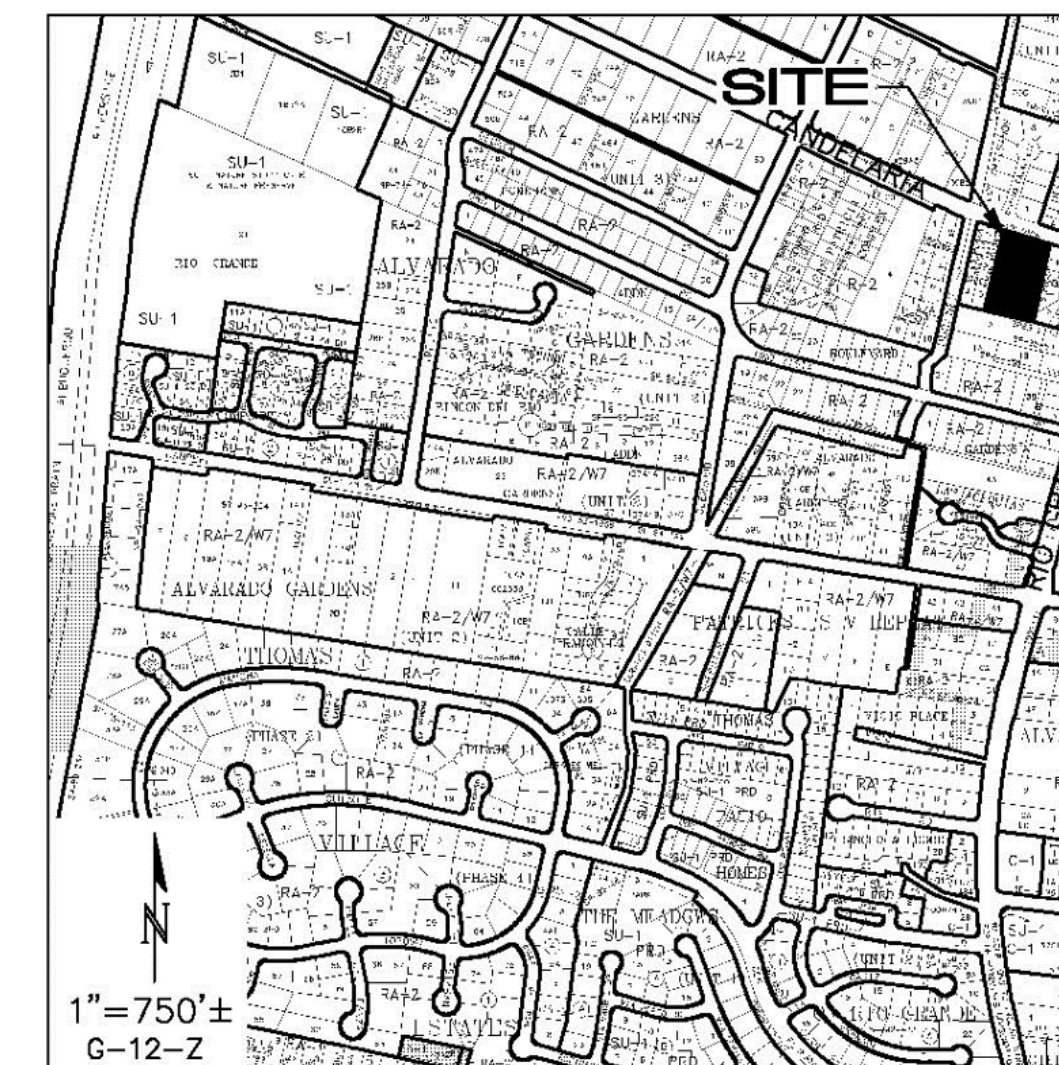
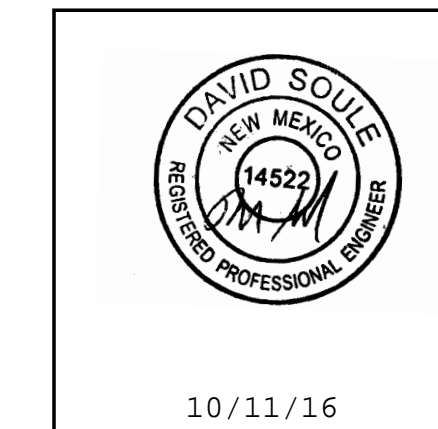




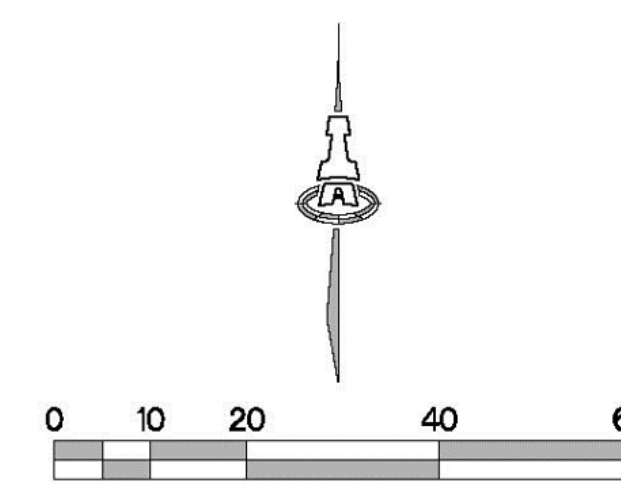
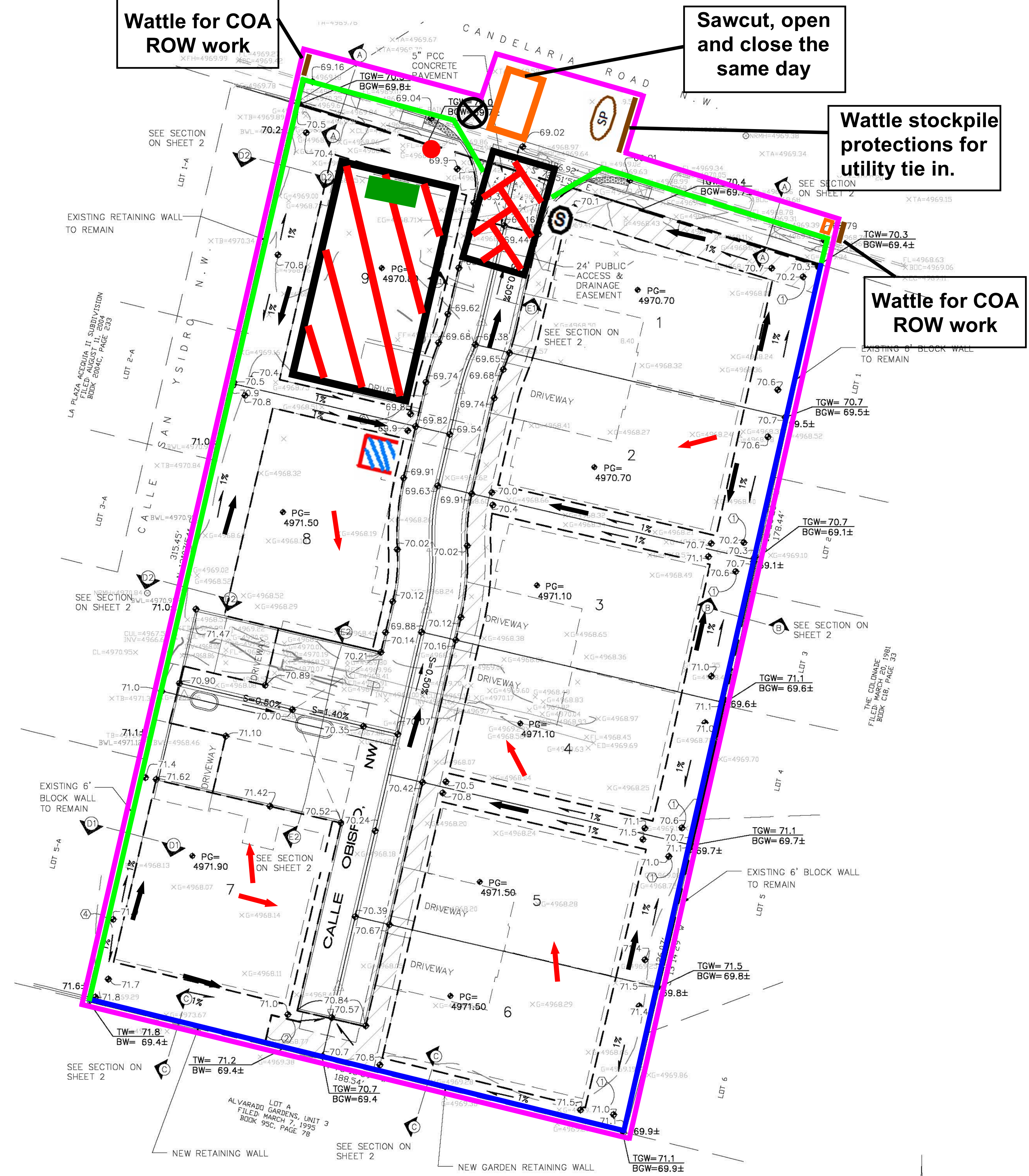
Inspections Plus, Inc.

Engineer Stamp



Note:

- When doing work in the City ROW (sidewalk, storm drain, drive pads) avoid dirt from getting into the street. If dirt is present in the street, the street should be swept every few days or the same day if rain is imminent.
- If stock piling dirt in the street and rain is forecasted, place wattles along the down slope side of the pile.



### Legend

#### Erosion Sediment Control Plan

- Project Perimeter & Disturbed Area
- Silt Fence
- Pre Flow
- Flow
- Mulch Socks
- Outfall
- Posting Sign
- Staging Area
- Stabilized Construction Entrance
- Trash Receptacle
- Chemical Toilet
- Concrete Washout
- Sawcut
- Block Wall
- Stock Pile

### Bishop's Compound

Receiving Waters: Rio Grande is located 15 miles to the South.

Critical Habitat: Rio Grande

Impairments: E. coli, Dissolved Oxygen, PCBs in Fish Tissue, Water Temperature

Grade: Before and After 0.5%