



Inspections Plus, Inc.

Engineer Stamp



5/24/17

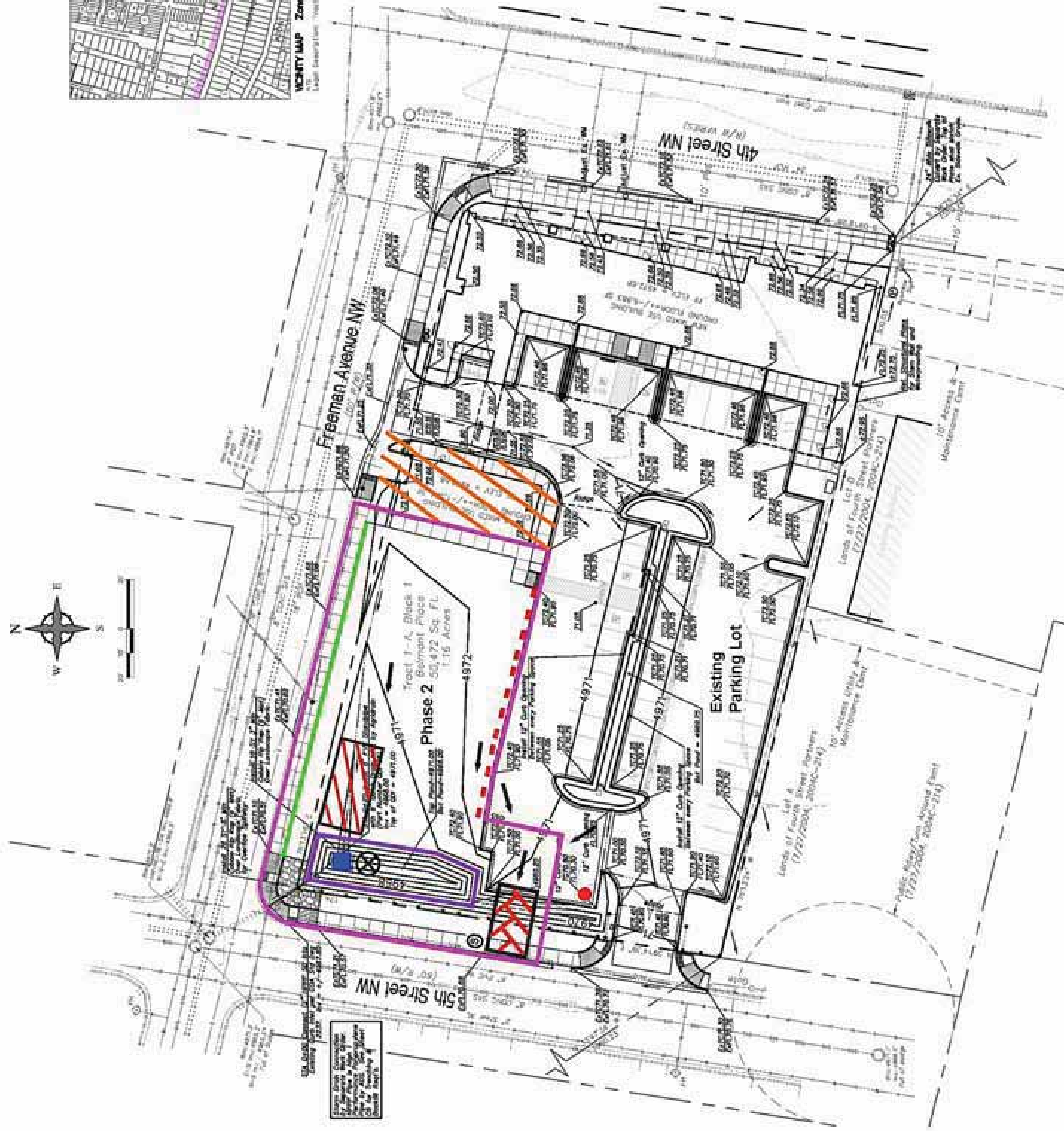


VICINITY MAP Zone Atlas G-14
 Note: Interpretation: 1983 T-1-A, Block 1, Belmont Place

Erosion Sediment Control Plan	
	Project Perimeter & Disturbed Area
	Silt Fence
	Existing Storm Inlet
	Pre Flow & Post Flow
	Outfall
	Posting Sign
	Retention Pond
	Staging Area
	Stabilized Construction Entrance
	Trash Receptacle
	Chemical Toilet
	Concrete Washout
	OutPak disposable washout
	6" Asphalt Curb / Sediment Barrier
	Existing 4 Story Building

Commercial & Apartment Building Phase 2

Receiving Waters & Action Area: Rio Grande is located 2.4 miles to the West.
 Impairments: E. coli, Dissolved Oxygen, PCBs in Fish Tissue, Water Temperature
 Grade: Before 0.5%; After 0.5%



SEA SHALL CONDUCT A VISUAL INSPECTION OF THE CONSTRUCTION SITE TO VERIFY THE LOCATION AND INSTALLATION OF THE EROSION CONTROL MEASURES SHOWN ON THIS PLAN. THE ENGINEER SHALL BE NOTIFIED OF ANY VIOLATIONS OF THE PLAN BY THE CONTRACTOR. THE ENGINEER SHALL BE RESPONSIBLE FOR THE PROTECTION OF THE PUBLIC SAFETY.