

CITY OF ALBUQUERQUE

Planning Department
Alan Varela, Director



Mayor Timothy M. Keller

July 30, 2025

Kent Trauernicht, RA
AKT Architects LLC
PR BOX 3366
Albuquerque, NM 87190

aktarch@earthlink.net

Re: Mallory Safety & Supply
3320 2nd st NW
Traffic Circulation Layout
Engineer's Stamp 7-21-25 (G15D038) TRANS-2025-00202

Dear Mr. Trauernicht,

PO Box 1293

The TCL submittal received 7-29-25 is approved for Building Permit by Transportation. A copy of the stamped and signed plan will be needed for each of the building permit plans. Please keep the original to be used for certification of the site for final C.O. for Transportation.

Albuquerque

When the site construction is completed and an inspection for Certificate of Occupancy (C.O.) is requested, use the original City stamped approved TCL for certification. Redline any minor changes and adjustments that were made in the field. A NM registered architect or engineer must stamp, sign, and date the certification TCL along with indicating that the development was built in "substantial compliance" with the TCL. Submit this certification, and the TCL to the [ABQ-PLAN](#) for log in and evaluation by Transportation.

NM 87103

www.cabq.gov

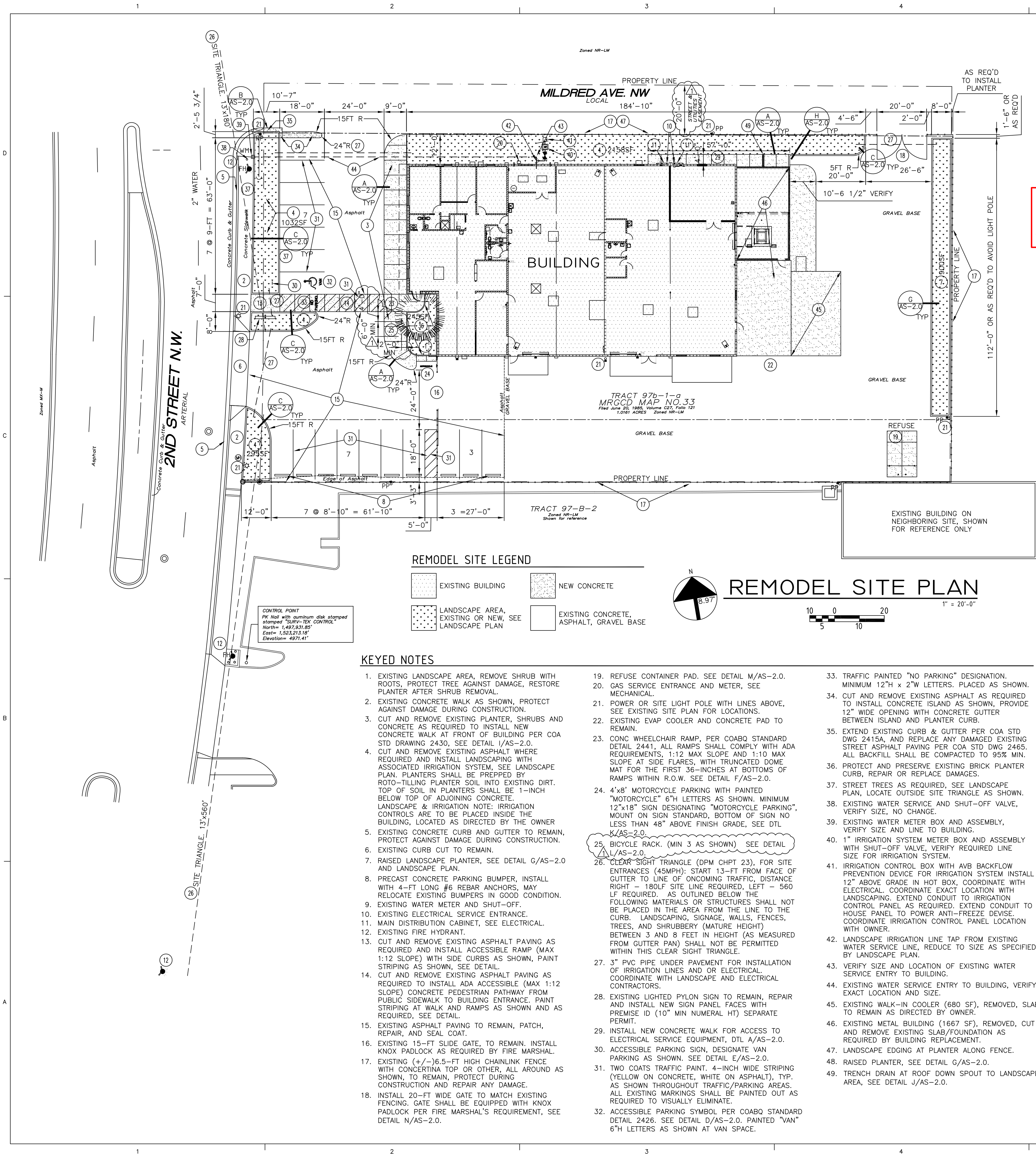
Once verification of certification is completed and approved, notification will be made to Building Safety to issue Final C.O. To confirm that a final C.O. has been issued, call Building Safety at 924-3690.

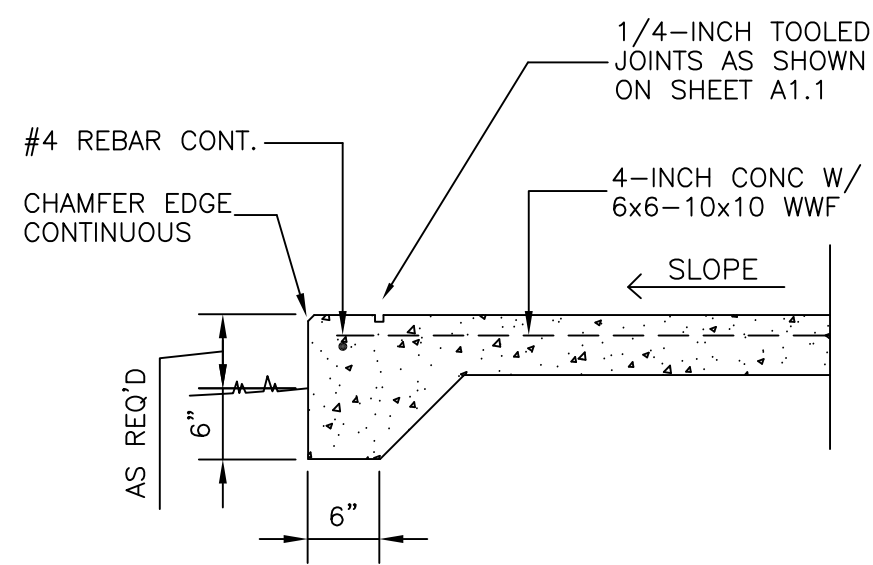
Sincerely,

Sertil A. Kanbar

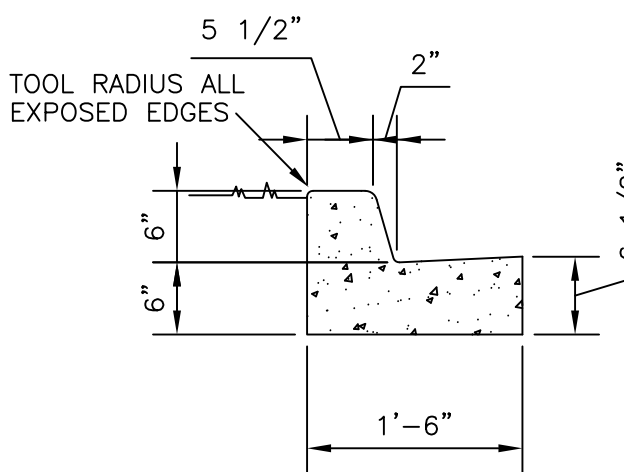
Sertil Kanbar, PhD, PE, CFM
Sr. Engineer, Planning Dept.
Development Review Services

C: CO Clerk, File

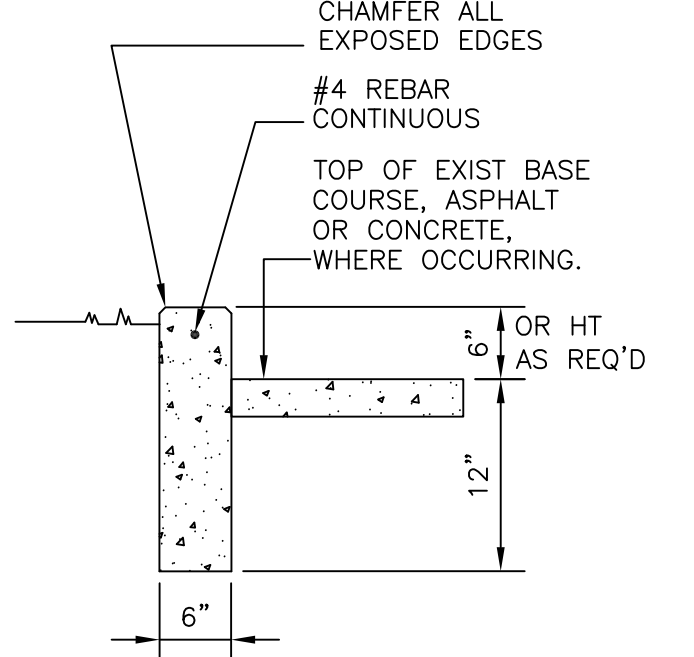




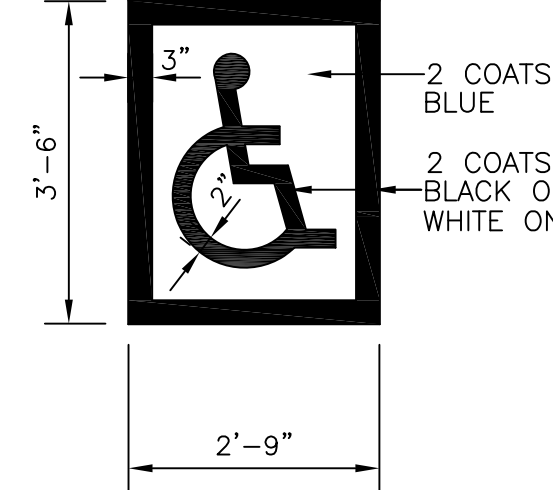
A CURB AT WALK
3/4" = 1'-0"



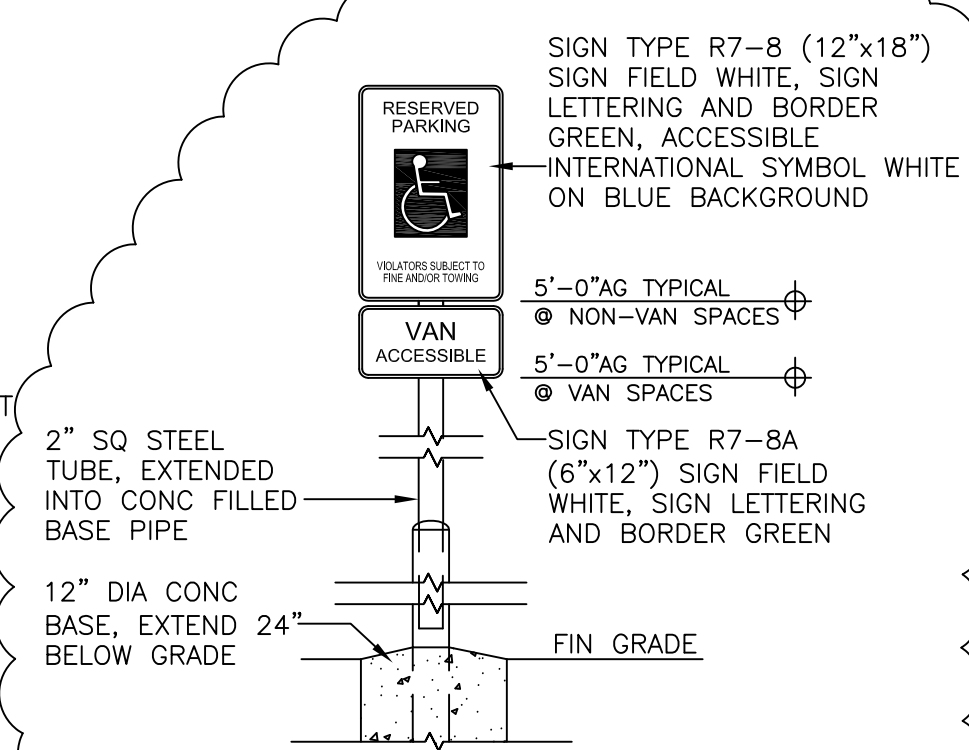
B CURB & GUTTER
3/4" = 1'-0"



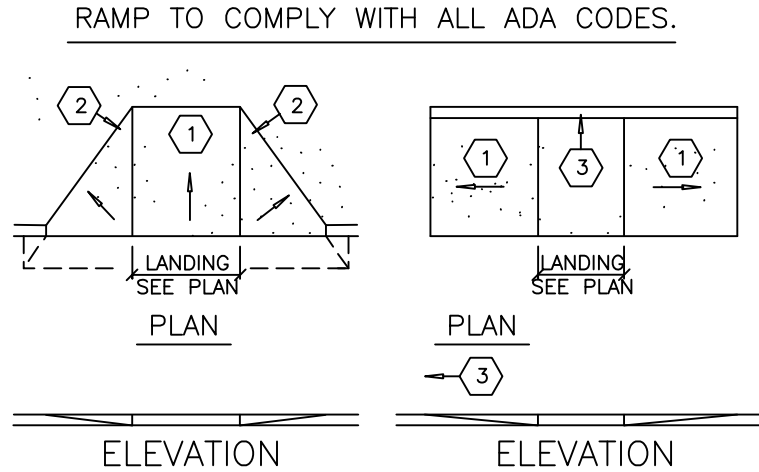
C STAND-UP CURB
3/4" = 1'-0"



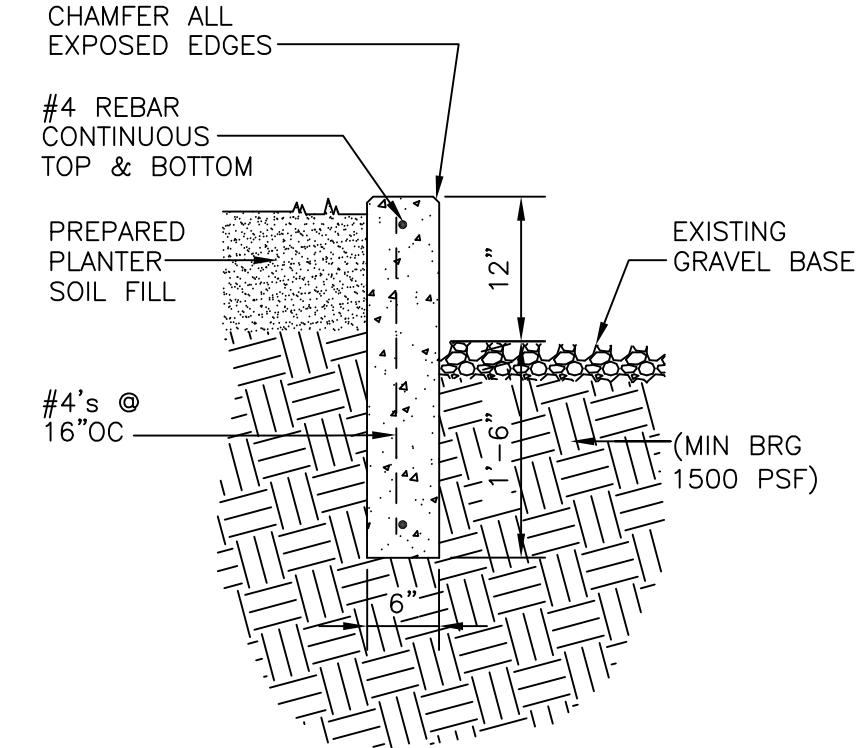
D HANDICAP PAINT STRIPING
NTS



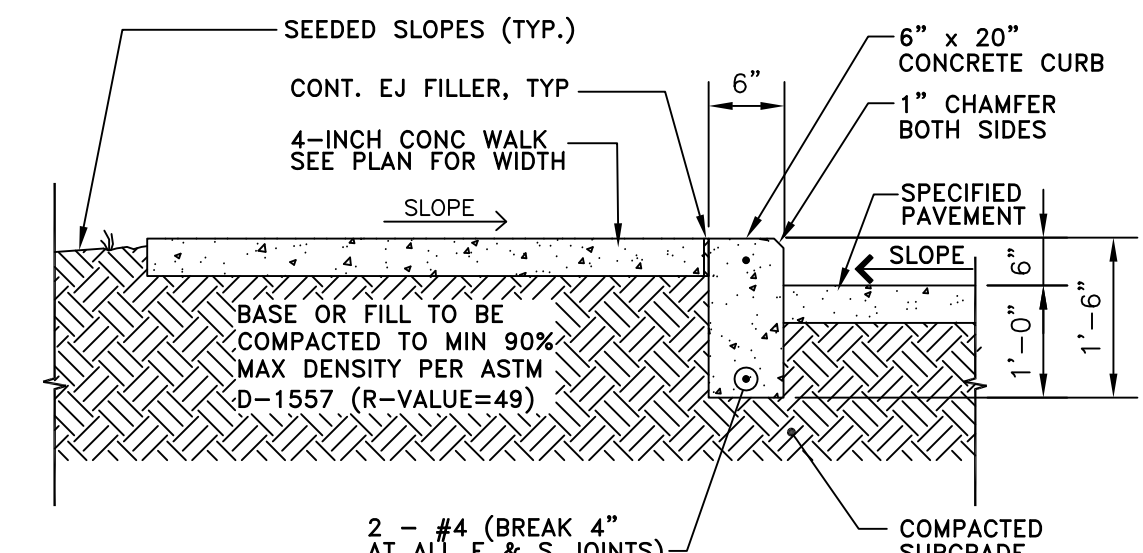
E HANDICAP PARKING SIGN
NTS



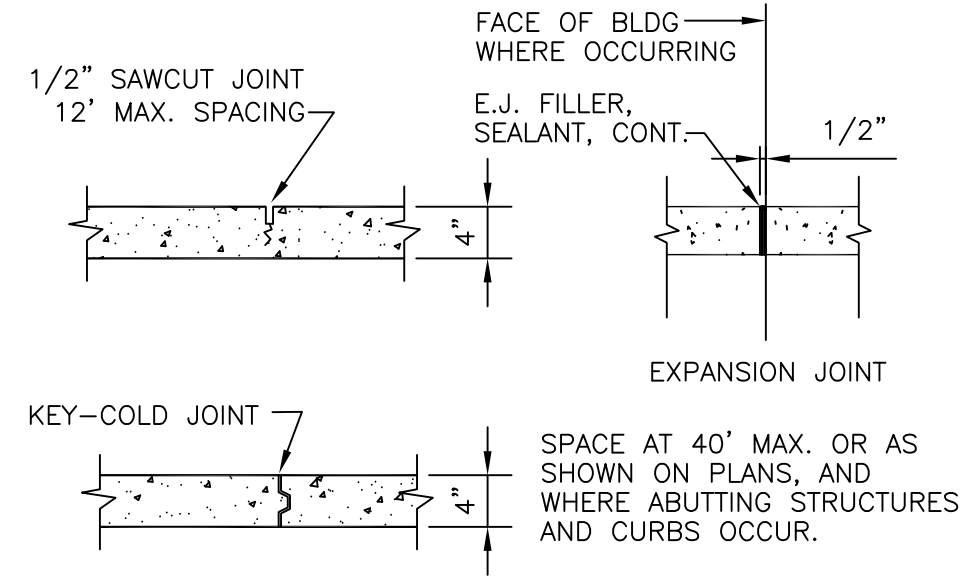
F HANDICAPPED RAMP
NTS



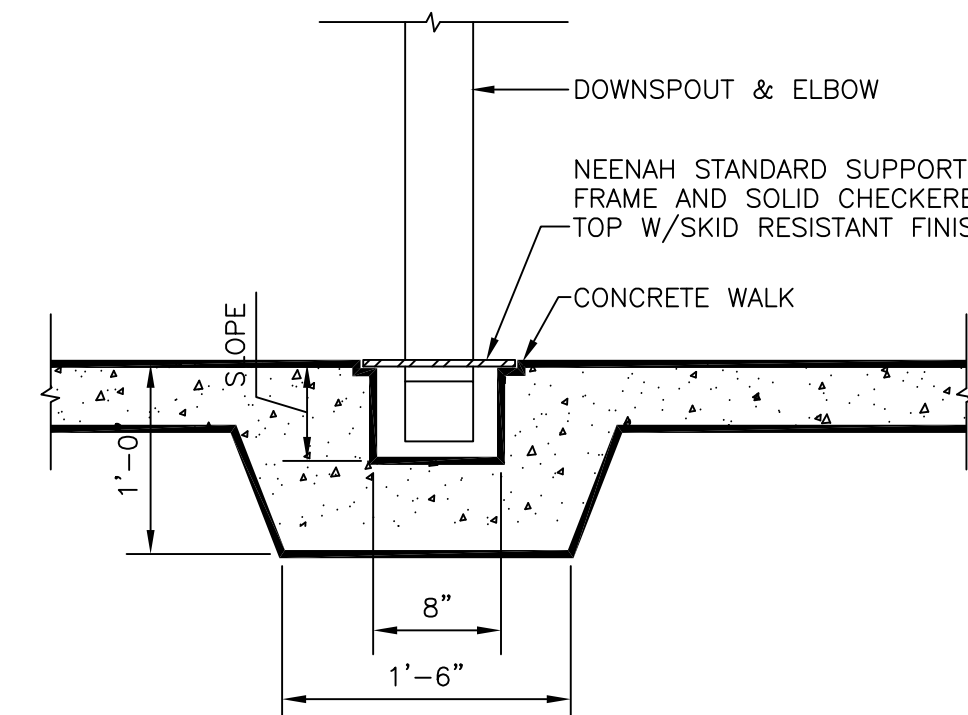
G RAISED PLANTER CURB
NTS



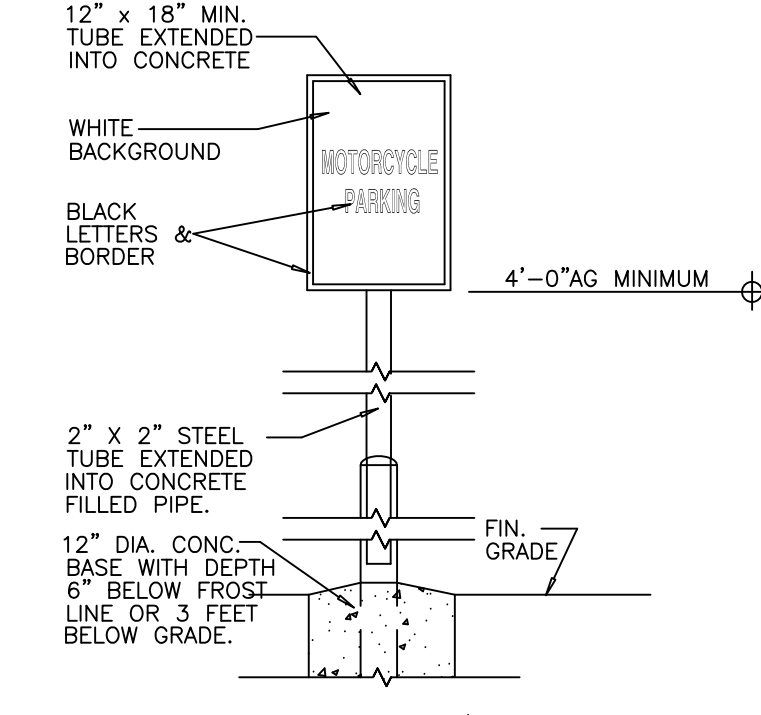
H CONCRETE WALK AT CURB
1/2" = 1'-0"



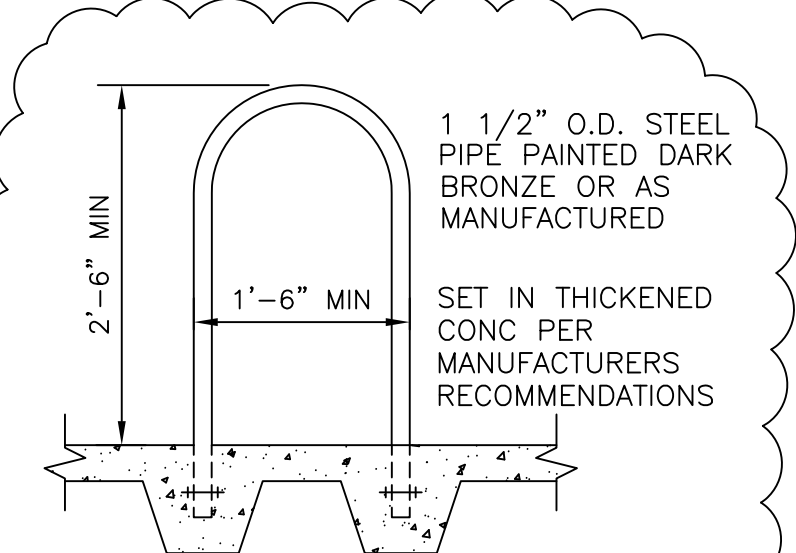
I CONCRETE JOINT DETAILS
NTS



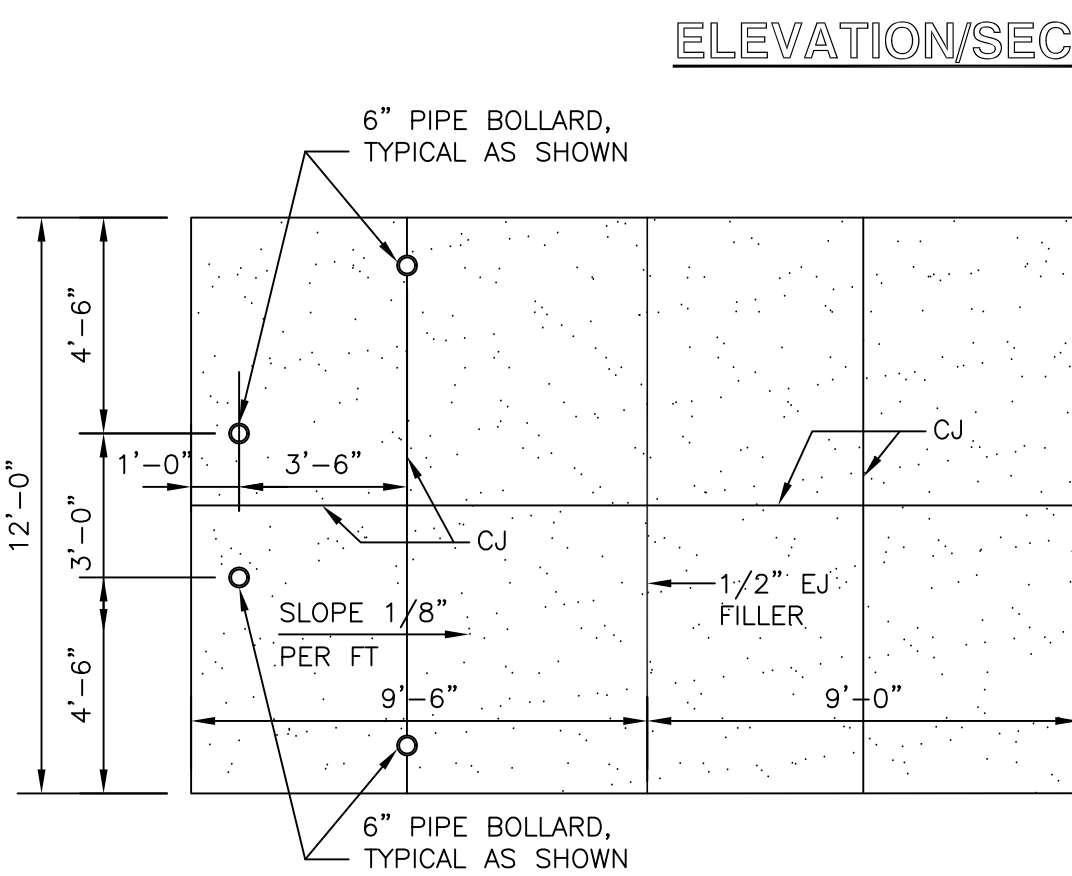
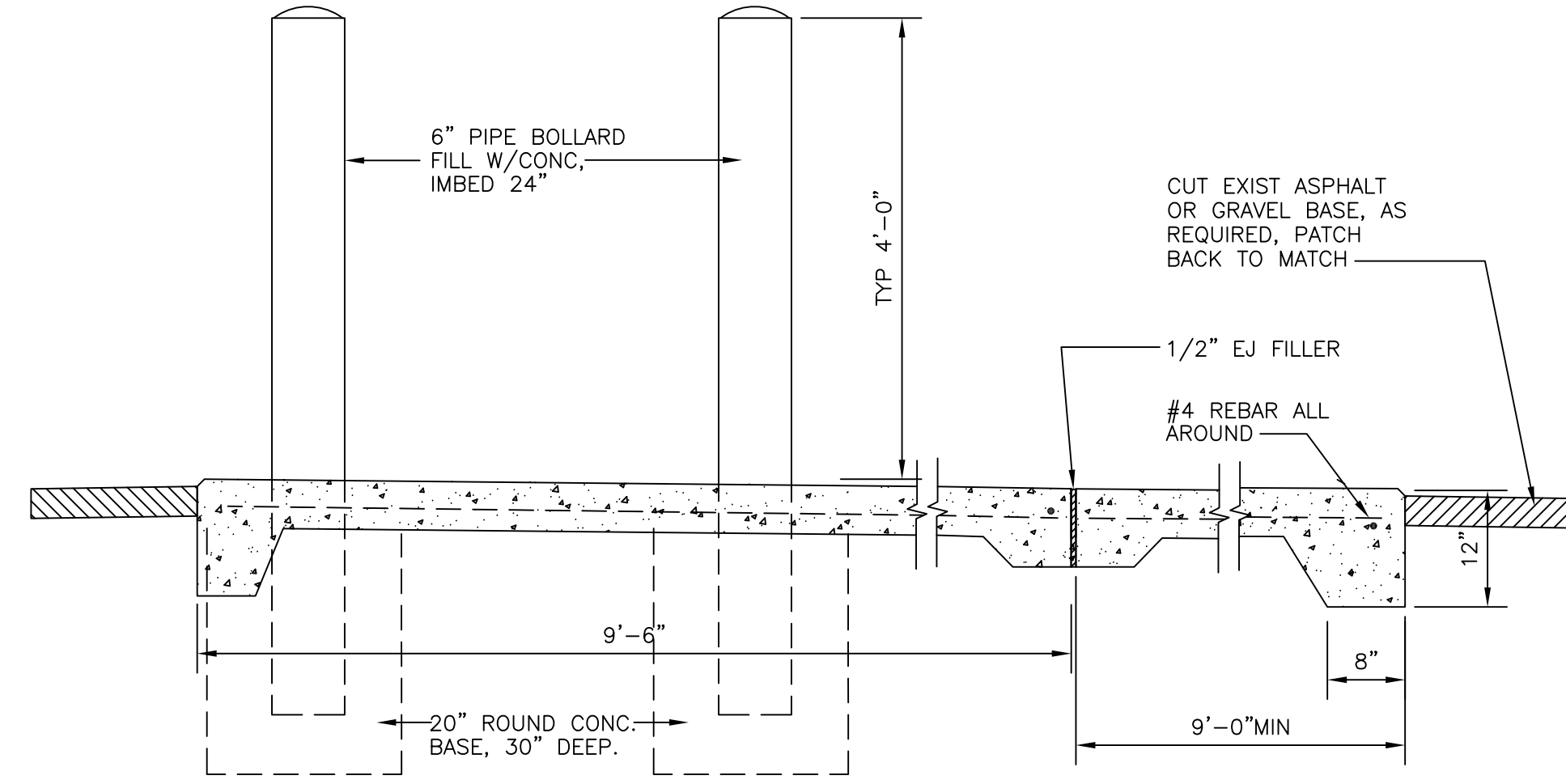
J SIDEWALK TRENCH DRAIN
N.T.S.



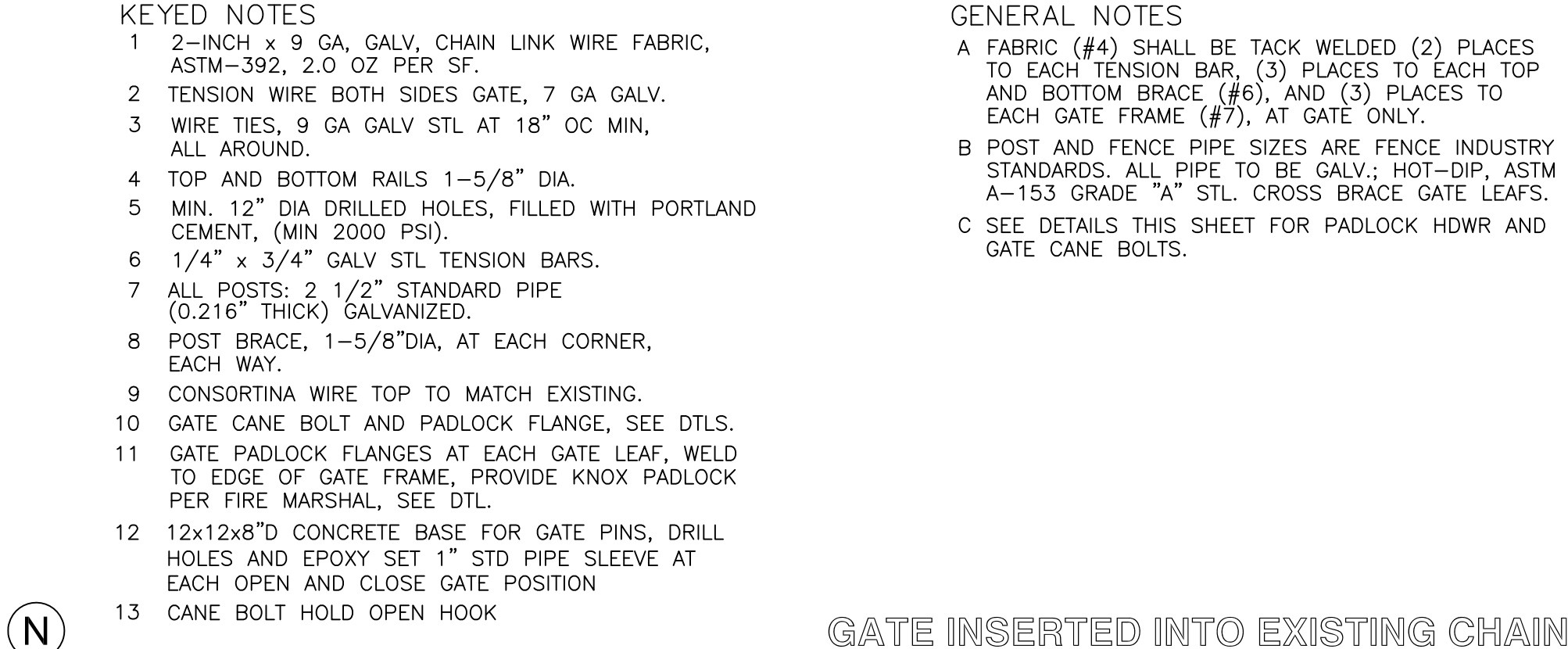
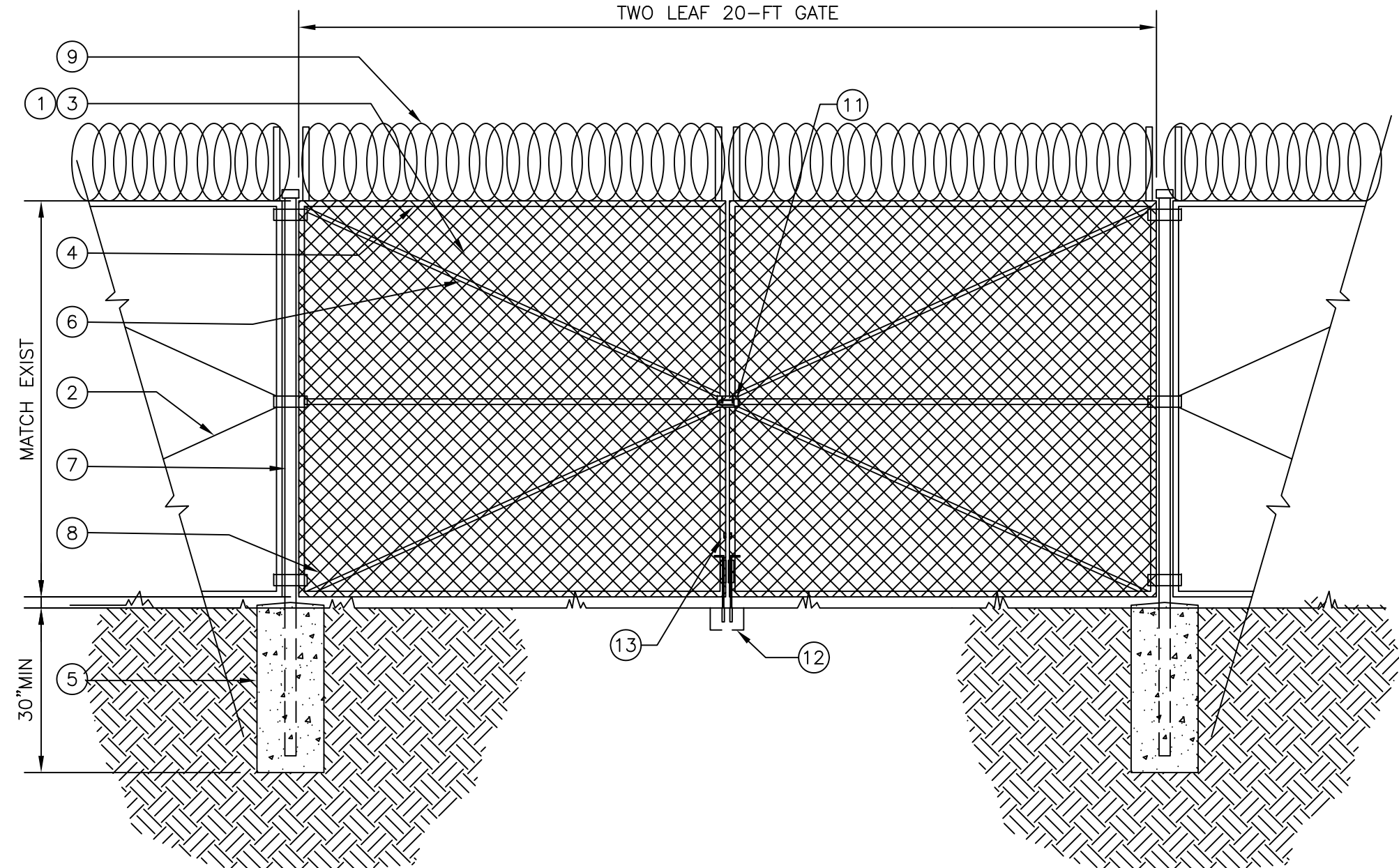
K MOTORCYCLE PARKING SIGN
NTS



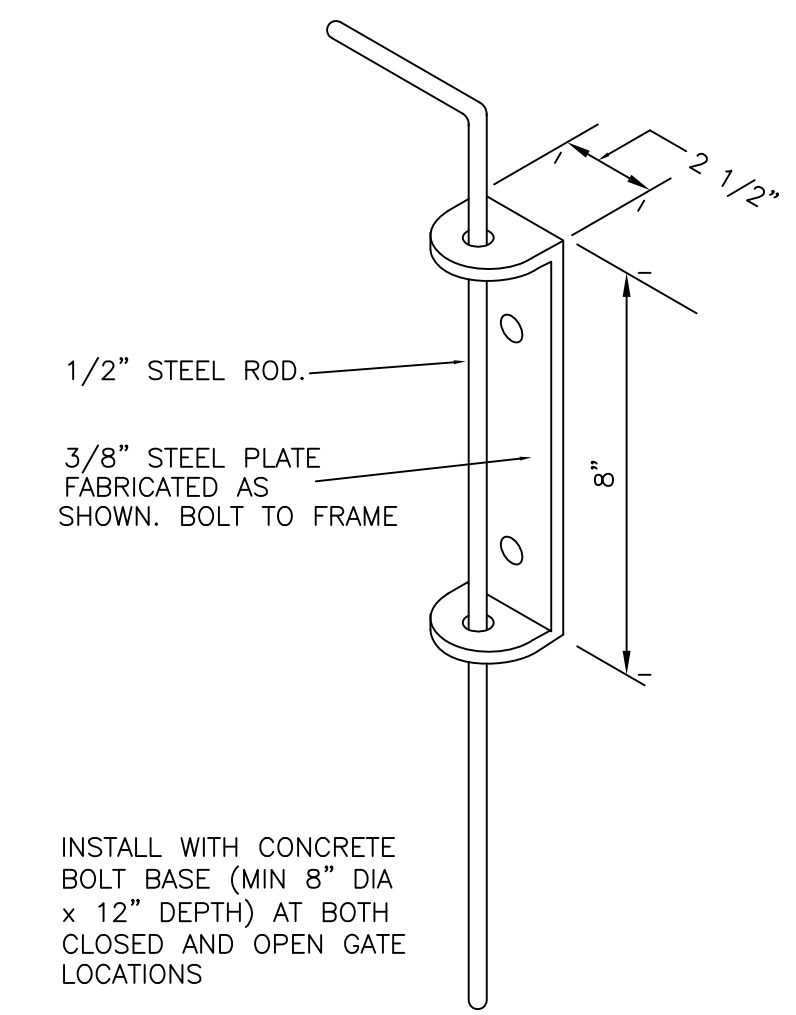
L BIKE RACK
1/2" = 1'-0"



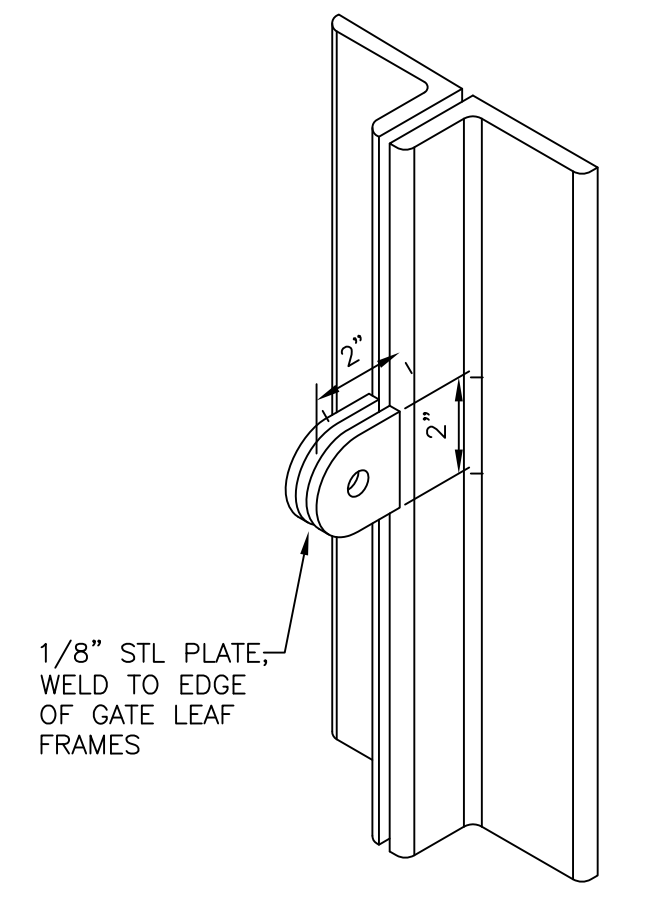
M 'REFUSE/SOLID WASTE' DUMPSTER PAD
1/4"=1'-0"



N GATE INSERTED INTO EXISTING CHAIN LINK FENCE
NTS



O GATE BOTTOM CANE BOLT
N.T.S.



P GATE PADLOCK FLANGES
N.T.S.

akt architects llc
P.O. BOX 3366
ALBUQUERQUE NM 87190
T: (505) 281-9560
C: (505) 259-7919
aktarch@earthlink.net

CONSULTANT
TRAFFIC CIRCULATION LAYOUT APPROVED
Sertil A. Kanbar 7/30/2025
Signed Date

Kent Trauernicht
KENT TRAUEKNICHT
1285
7/21/25
REGISTERED ARCHITECT

PROJECT
TENANT IMPROVEMENT

MALLORY SAFETY & SUPPLY

PROJECT ADDRESS
3320 2nd STREET NW,
ALBUQUERQUE 87107

MARK	DATE	DESCRIPTION
△	7/29/25	CITY REVISIONS (CLOUDED)

PROJECT NO: 0635
COPYRIGHT AKT ARCHITECTS, LLC
SHEET TITLE

SITE DETAILS

AS-2.0