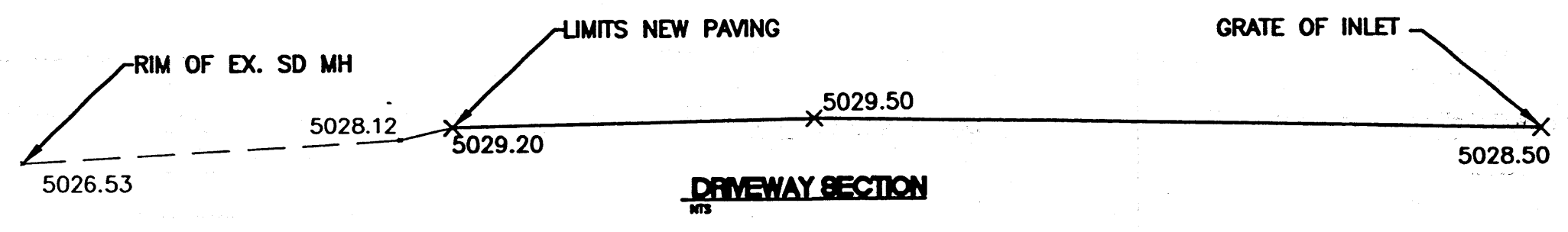
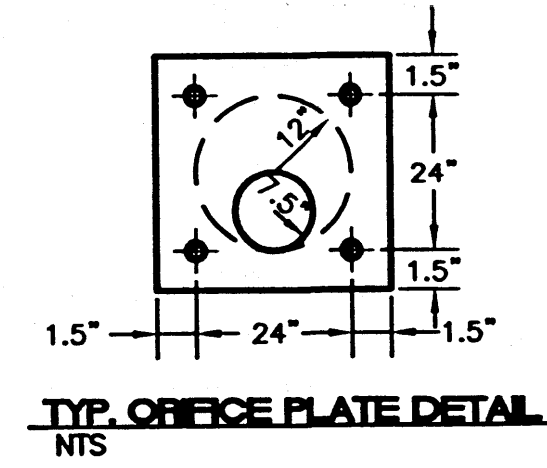
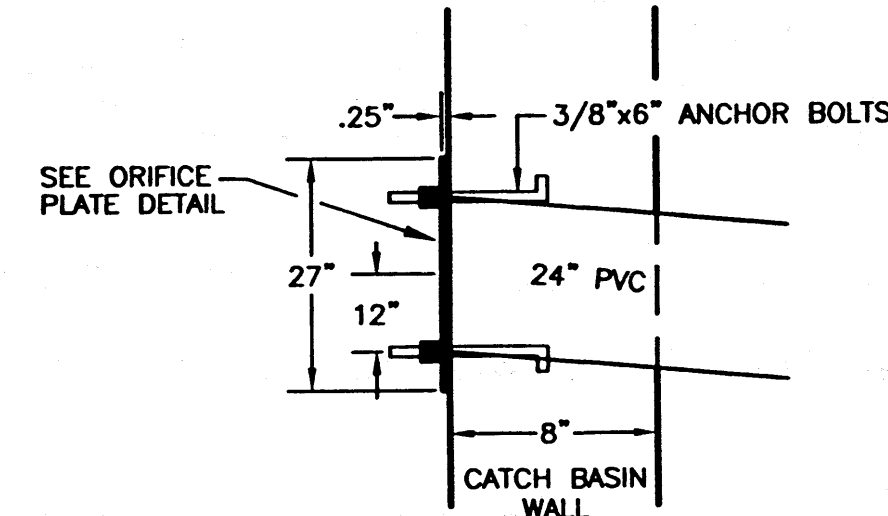
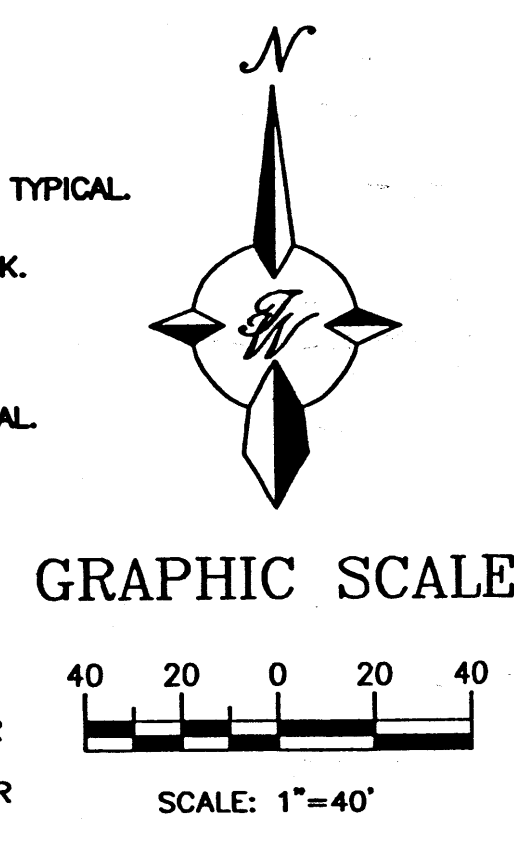


- GENERAL NOTES**
1. STORM INLET CUTTER TRANSITION WILL BE SHOWN ON THE CONSTRUCTION PLANS.
 2. OUTLET PIPE, PER DESIGN REQUIREMENT.
 3. FOR FRAME & GRATING, SEE DWG. 2216, 2220 & 2221
- CONSTRUCTION NOTES**
- A. FRAME & GRATE
 - B. CENTER SUPPORT ASSEMBLY
 - C. CUT ONE HORIZONTAL AND ONE VERTICAL BAR MAX. AT PIPE OPENING.
 - D. NO. 4 BARS @ 6" O.C. EACH WAY
 - E. USE STANDARD STEPS, SEE DWG. 2229.
 - F. CONC. FILL, SEE NOTE C DWG. 2201
 - G. INVERT PER DESIGN
 - H. INSTALL STEPS ON DOWNSTREAM FACE



- NOTES FOR PAVING**
1. REMOVE EXISTING ASPHALT AS INDICATED.
 2. BACK-FILL EXISTING POND 95% COMPACTION TYPICAL.
 3. SAWCUT EXISTING ASPHALT TO REMOVE.
 4. CLEAN EXIST ASPHALT CRACKS & APPLY TACK.
 5. FILL CRACKS WITH ASPHALT FINES.
 6. TACK COAT EXISTING ASPHALT & RE-PAVE PER PAVING SECTION SHOWN.
 7. RESTRIPE ENTIRE PARKING LOT 4" WIDE TYPICAL.

CAUTION:
EXISTING UTILITIES ARE NOT SHOWN.
IT SHALL BE THE SOLE RESPONSIBILITY
OF THE CONTRACTOR TO CONDUCT ALL
NECESSARY FIELD INVESTIGATIONS PRIOR
TO ANY EXCAVATION TO DETERMINE THE
ACTUAL LOCATION OF UTILITIES & OTHER
IMPROVEMENTS.



LOCAL MAP

TRACT 2B, LAND OF J.R. NANCE

LEGAL DESCRIPTION

TRACT 2B, LAND OF J.R. NANCE

NOTES

1. ALL SPOT ELEVATIONS REPRESENT TOP OF NEW ASPHALT ELEVATION UNLESS OTHERWISE NOTED.
2. ALL PARKING ISLANDS WILL BE STRIPED, WITHOUT CURB.
3. ENTIRE PARKING LOT WILL BE STRIPED, WITHOUT CURB.

LEGEND

- EXISTING STORM SEWER MANHOLE
- EXISTING STORM SEWER INLET
- EXISTING STORM SEWER LINE
- PROPOSED STORM SEWER MANHOLE
- PROPOSED DBL. "A" INLET
- PROPOSED SNGL. "A" INLET
- PROPOSED SNGL. "D" INLET
- PROPOSED DBL. "D" INLET
- PROPOSED STORM SEWER LINE
- EXISTING CONTOUR
- EXISTING INDEX CONTOUR
- PROPOSED CONTOUR
- PROPOSED INDEX CONTOUR
- FLOW ARROW
- SLOPE TIE
- EXISTING SPOT ELEVATION
- PROPOSED SPOT ELEVATION
- FUTURE SPOT ELEVATION
- PONDING LIMITS (WATER SURFACE ELEVATION)
- CENTERLINE
- RIGHT-OF-WAY
- LOT LINES
- EXISTING LOT LINES
- PROPOSED PARKING STRIPING

ROUGH GRADING APPROVAL

DATE

ENGINEER'S SEAL

NATIONAL ELECTRIC

GRADING AND DRAINAGE PLAN

TERRA WEST, LLC

8509 JEFFERSON NE
ALBUQUERQUE, NEW MEXICO 87113
(505)858-3100

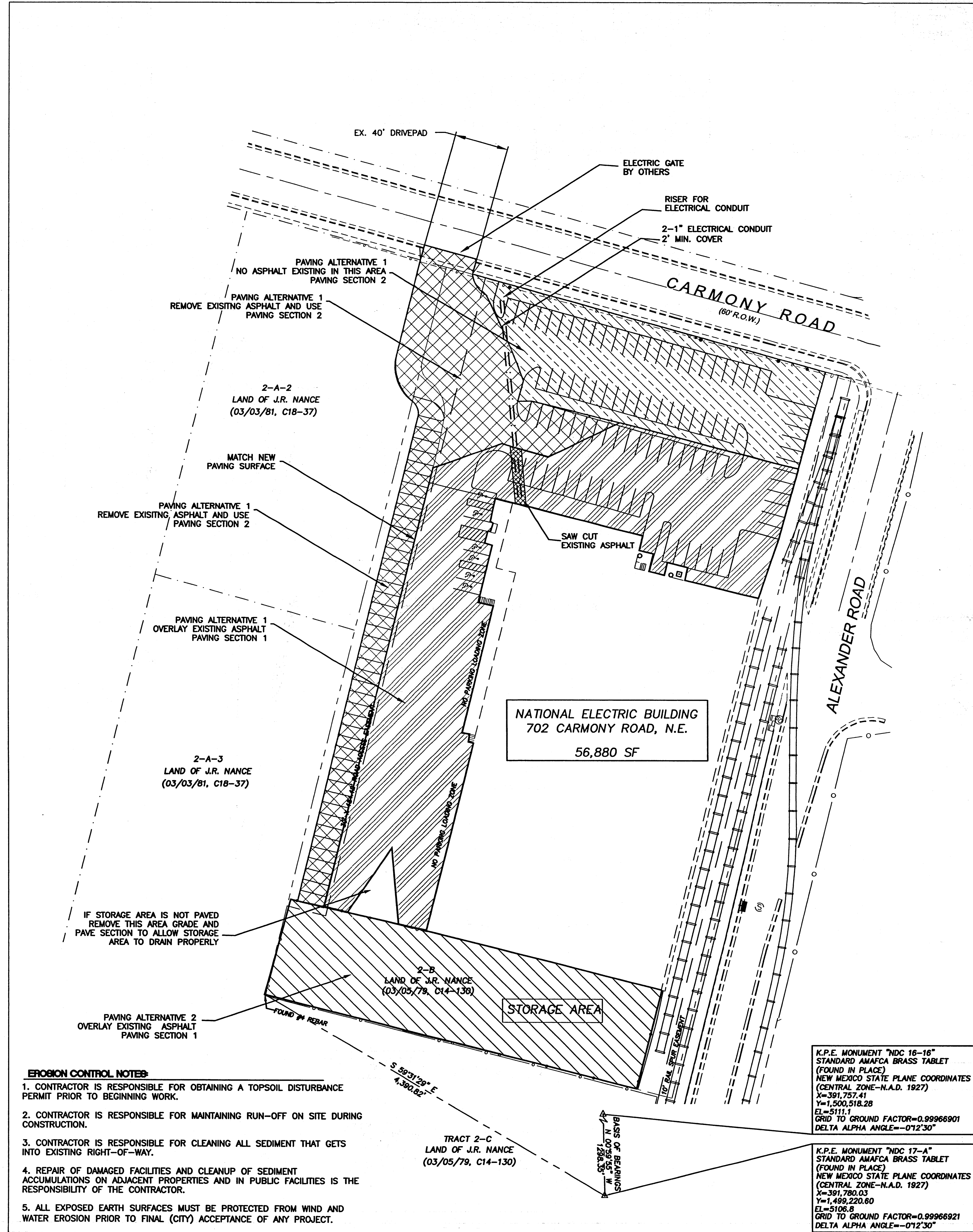
DRAWN BY MLG

DATE 1-25-01

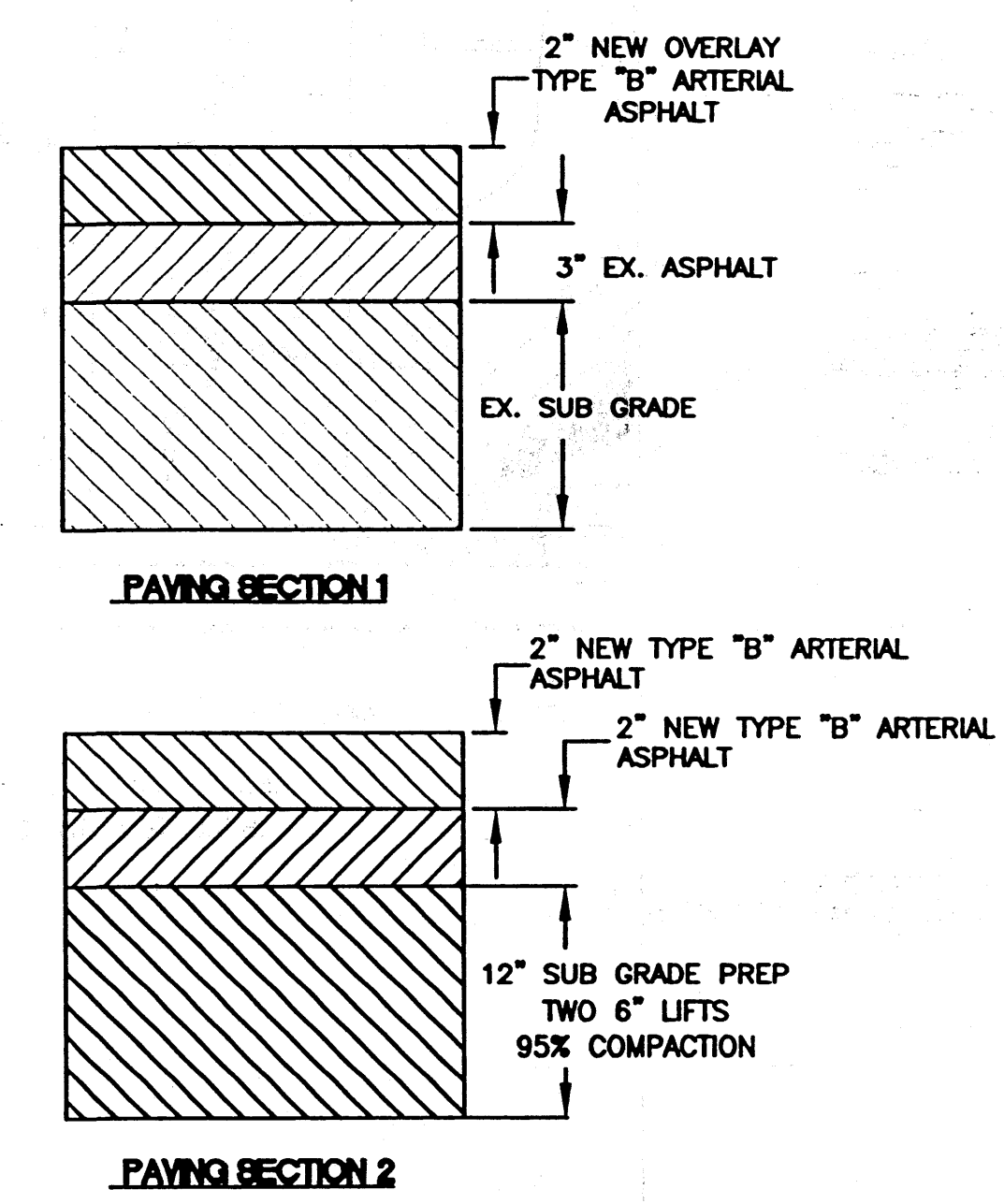
20100GR.DWG

SHEET # 1

JOB # 200100

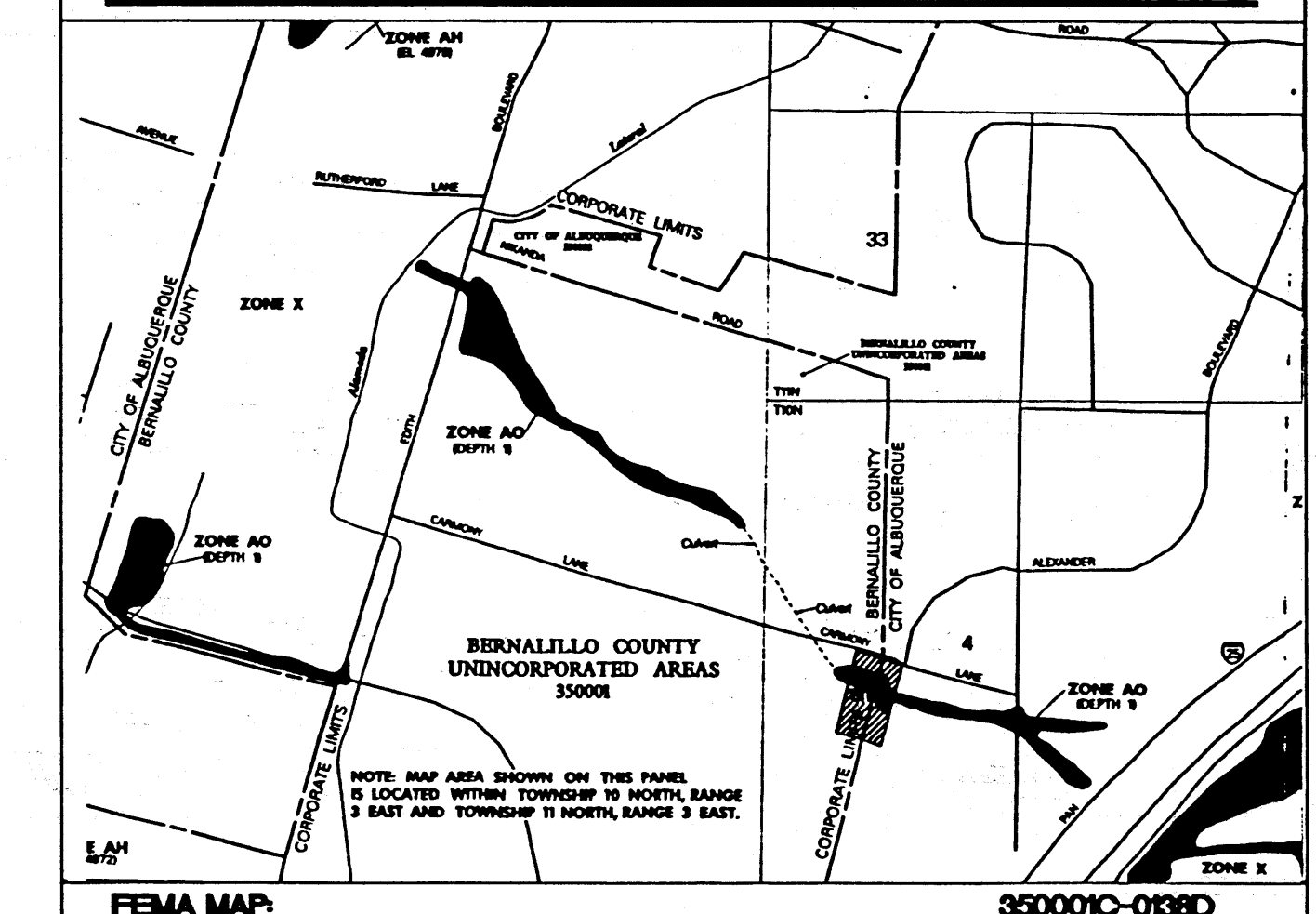
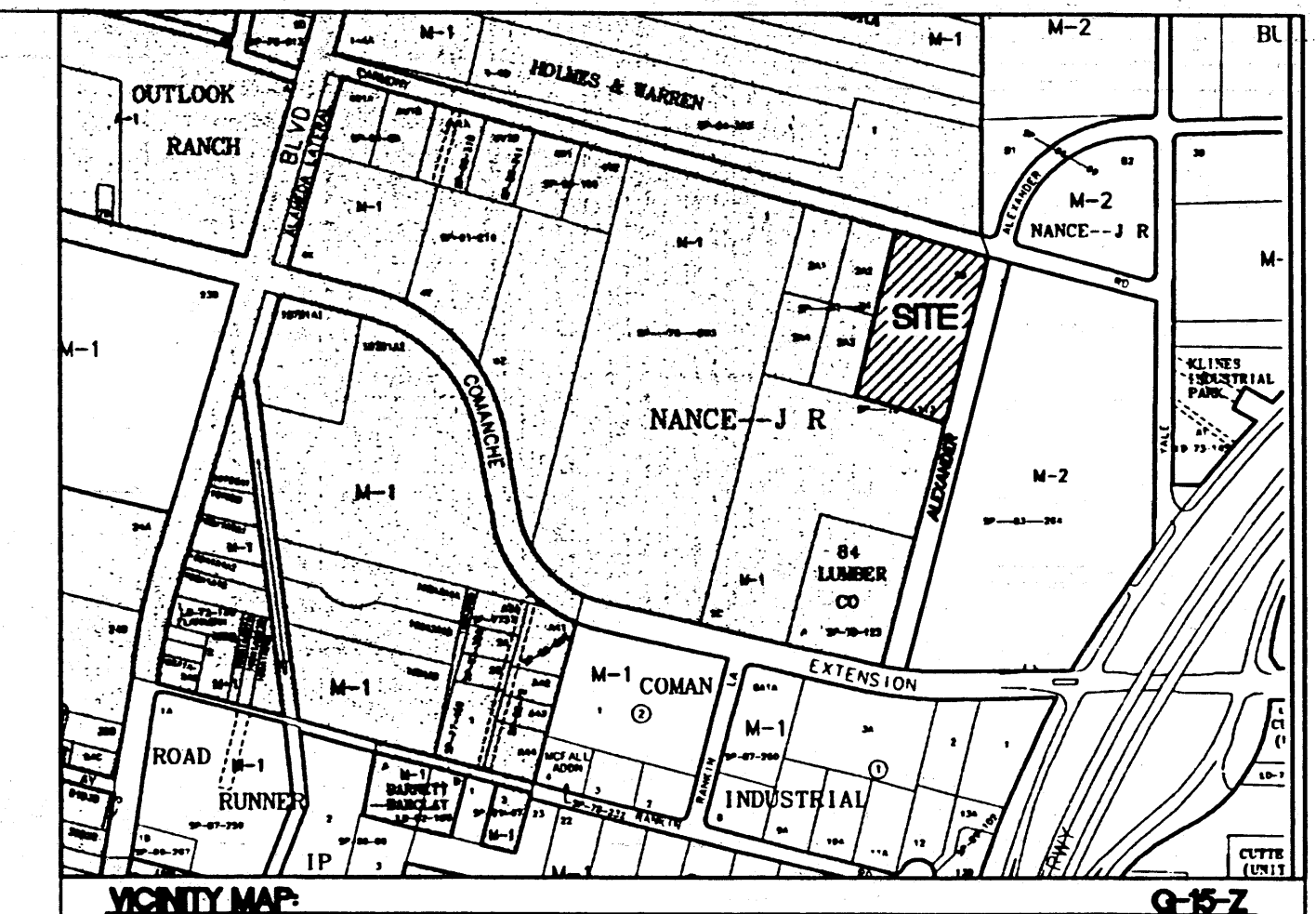


- PAVEMENT AREA ALTERNATIVE 1 REMOVE EXISTING ASPHALT USE PAVEMENT SECTION 2
- PAVEMENT AREA ALTERNATIVE 1 OVERLAY EXISTING ASPHALT USE PAVEMENT SECTION 1
- PAVEMENT AREA ALTERNATIVE 1 NO EXISTING ASPHALT USE PAVEMENT SECTION 2
- PAVEMENT AREA ALTERNATIVE 2 STORAGE AREA OVERLAY USE PAVEMENT SECTION 1



- NOTES FOR PAVING**
1. REMOVE EXISTING ASPHALT AS INDICATED.
 2. BACK-FILL EXISTING POND 95% COMPACTION TYPICAL.
 3. SAWCUT EXISTING ASPHALT TO REMOVE.
 4. CLEAN EXIST ASPHALT CRACKS & APPLY TACK.
 5. FILL CRACKS WITH ASPHALT FINES.
 6. TACK COAT EXISTING ASPHALT & RE-PAVE PER PAVING SECTION SHOWN.
 7. RESTRIPE ENTIRE PARKING LOT 4" WIDE TYPICAL.

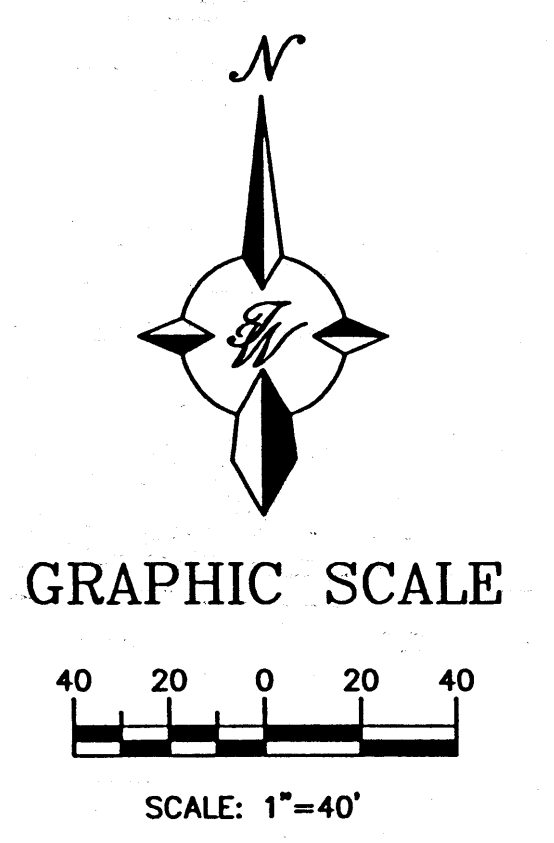
CAUTION: EXISTING UTILITIES ARE NOT SHOWN. IT SHALL BE THE SOLE RESPONSIBILITY OF THE CONTRACTOR TO CONDUCT ALL NECESSARY FIELD INVESTIGATIONS PRIOR TO ANY EXCAVATION TO DETERMINE THE ACTUAL LOCATION OF UTILITIES & OTHER IMPROVEMENTS.





LEGAL DESCRIPTION:
TRACT 2B, LAND OF J.R. NANCE

NOTES:

1. ALL SPOT ELEVATIONS REPRESENT TOP OF NEW ASPHALT ELEVATION UNLESS OTHERWISE NOTED.
2. ALL PARKING ISLANDS WILL BE STRIPED, WITHOUT CURB.
3. ENTIRE PARKING LOT WILL BE STRIPED, WITHOUT CURB.



- EROSION CONTROL NOTES:**
1. CONTRACTOR IS RESPONSIBLE FOR OBTAINING A TOPSOIL DISTURBANCE PERMIT PRIOR TO BEGINNING WORK.
 2. CONTRACTOR IS RESPONSIBLE FOR MAINTAINING RUN-OFF ON SITE DURING CONSTRUCTION.
 3. CONTRACTOR IS RESPONSIBLE FOR CLEANING ALL SEDIMENT THAT GETS INTO EXISTING RIGHT-OF-WAY.
 4. REPAIR OF DAMAGED FACILITIES AND CLEANUP OF SEDIMENT ACCUMULATIONS ON ADJACENT PROPERTIES AND IN PUBLIC FACILITIES IS THE RESPONSIBILITY OF THE CONTRACTOR.
 5. ALL EXPOSED EARTH SURFACES MUST BE PROTECTED FROM WIND AND WATER EROSION PRIOR TO FINAL (CITY) ACCEPTANCE OF ANY PROJECT.

ROUGH GRADING APPROVAL		DATE
ENGINEER'S SEAL	NATIONAL ELECTRIC	DRAWN BY: MLG
		DATE 1-25-01
	PAVING SHEET	20100PAVING.DWG
RONALD R. BOHANNAN P.E. #7868	 TIERRA WEST, LLC 8509 JEFFERSON NE ALBUQUERQUE, NEW MEXICO 87113 (505)858-3100	SHEET # 2
		JOB # 200100