

# CITY OF ALBUQUERQUE



August 21, 2015

David Soule, P.E.  
Rio Grande Engineering  
PO Box 93924  
Albuquerque, NM 87199

**Re: National Electric  
Grading and Drainage Plan  
Engineer's Stamp Date 8/1/2015 (G16/D095E)**

Dear Mr. Soule,

Based upon the information provided in your submittal received 8-04-15, the Grading and Drainage Plan is approved for Building Permit. Please attach a copy of this approved plan to the construction set prior to sign-off by Hydrology.

PO Box 1293

Prior to Certificate of Occupancy release, Engineer Certification per the DPM checklist will be required.

Albuquerque

If you have any questions, you can contact me at 924-3999.

New Mexico 87103

Sincerely,

Shahab Biazar, P.E.  
City Engineer, Planning Dept.  
Development Review Services

[www.cabq.gov](http://www.cabq.gov)

C: e-mail



# City of Albuquerque

Planning Department

Development & Building Services Division

## DRAINAGE AND TRANSPORTATION INFORMATION SHEET

(REV 02/2013)

Project Title: \_\_\_\_\_ Building Permit #: \_\_\_\_\_ City Drainage #: \_\_\_\_\_

DRB#: \_\_\_\_\_ EPC#: \_\_\_\_\_ Work Order#: \_\_\_\_\_

Legal Description: \_\_\_\_\_

City Address: \_\_\_\_\_

**Engineering Firm:** \_\_\_\_\_ Contact: \_\_\_\_\_

Address: \_\_\_\_\_

Phone#: \_\_\_\_\_ Fax#: \_\_\_\_\_ E-mail: \_\_\_\_\_

**Owner:** \_\_\_\_\_ Contact: \_\_\_\_\_

Address: \_\_\_\_\_

Phone#: \_\_\_\_\_ Fax#: \_\_\_\_\_ E-mail: \_\_\_\_\_

**Architect:** \_\_\_\_\_ Contact: \_\_\_\_\_

Address: \_\_\_\_\_

Phone#: \_\_\_\_\_ Fax#: \_\_\_\_\_ E-mail: \_\_\_\_\_

**Surveyor:** \_\_\_\_\_ Contact: \_\_\_\_\_

Address: \_\_\_\_\_

Phone#: \_\_\_\_\_ Fax#: \_\_\_\_\_ E-mail: \_\_\_\_\_

**Contractor:** \_\_\_\_\_ Contact: \_\_\_\_\_

Address: \_\_\_\_\_

Phone#: \_\_\_\_\_ Fax#: \_\_\_\_\_ E-mail: \_\_\_\_\_

### TYPE OF SUBMITTAL:

- \_\_\_\_\_ DRAINAGE REPORT
- \_\_\_\_\_ DRAINAGE PLAN 1st SUBMITTAL
- \_\_\_\_\_ DRAINAGE PLAN RESUBMITTAL
- \_\_\_\_\_ CONCEPTUAL G & D PLAN
- \_\_\_\_\_ GRADING PLAN
- \_\_\_\_\_ EROSION & SEDIMENT CONTROL PLAN (ESC)
- \_\_\_\_\_ ENGINEER'S CERT (HYDROLOGY)
- \_\_\_\_\_ CLOMR/LOMR
- \_\_\_\_\_ TRAFFIC CIRCULATION LAYOUT (TCL)
- \_\_\_\_\_ ENGINEER'S CERT (TCL)
- \_\_\_\_\_ ENGINEER'S CERT (DRB SITE PLAN)
- \_\_\_\_\_ ENGINEER'S CERT (ESC)
- \_\_\_\_\_ SO-19
- \_\_\_\_\_ OTHER (SPECIFY)

### CHECK TYPE OF APPROVAL/ACCEPTANCE SOUGHT:

- \_\_\_\_\_ SIA/FINANCIAL GUARANTEE RELEASE
- \_\_\_\_\_ PRELIMINARY PLAT APPROVAL
- \_\_\_\_\_ S. DEV. PLAN FOR SUB'D APPROVAL
- \_\_\_\_\_ S. DEV. FOR BLDG. PERMIT APPROVAL
- \_\_\_\_\_ SECTOR PLAN APPROVAL
- \_\_\_\_\_ FINAL PLAT APPROVAL
- \_\_\_\_\_ CERTIFICATE OF OCCUPANCY (PERM)
- \_\_\_\_\_ CERTIFICATE OF OCCUPANCY (TCL TEMP)
- \_\_\_\_\_ FOUNDATION PERMIT APPROVAL
- \_\_\_\_\_ BUILDING PERMIT APPROVAL
- \_\_\_\_\_ GRADING PERMIT APPROVAL
- \_\_\_\_\_ PAVING PERMIT APPROVAL
- \_\_\_\_\_ WORK ORDER APPROVAL
- \_\_\_\_\_ GRADING CERTIFICATION
- \_\_\_\_\_ SO-19 APPROVAL
- \_\_\_\_\_ ESC PERMIT APPROVAL
- \_\_\_\_\_ ESC CERT. ACCEPTANCE
- \_\_\_\_\_ OTHER (SPECIFY)

WAS A PRE-DESIGN CONFERENCE ATTENDED: \_\_\_\_\_ Yes \_\_\_\_\_ No \_\_\_\_\_ Copy Provided

DATE SUBMITTED: \_\_\_\_\_ By: \_\_\_\_\_

Requests for approvals of Site Development Plans and/or Subdivision Plats shall be accompanied by a drainage submittal. The particular nature, location, and scope to the proposed development defines the degree of drainage detail. One or more of the following levels of submittal may be required based on the following:

1. **Conceptual Grading and Drainage Plan:** Required for approval of Site Development Plans greater than five (5) acres and Sector Plans
2. **Drainage Plans:** Required for building permits, grading permits, paving permits and site plans less than five (5) acres
3. **Drainage Report:** Required for subdivision containing more than ten (10) lots or constituting five (5) acres or more
4. **Erosion and Sediment Control Plan:** Required for any new development and redevelopment site with 1-acre or more of land disturbing area, including project less than 1-acre than are part of a larger common plan of development

August 4, 2015

Ms. Jeanne Wolfenbarger, PE  
Senior Engineer  
Hydrology Department  
Public Works Department  
City of Albuquerque

**RE: Revised Grading Plan (G16-D095E)  
National Electric  
Albuquerque, New Mexico**

Dear Ms. Wolfenbarger:

The purpose of this letter is to accompany the enclosed revised grading plan. The plan has been revised to address your written comments dated May 28, 2015. The following is an answer to the corresponding comment number to your letter.

1. We have provided a basin map and labeled project limits
2. We have labeled the pond contours
3. We have shown a swap form the 5049.85 at entry to the pond on north side of site.
4. We have shown the roof drains
5. We have updated the drainage narrative to discuss upland flows and retention volumes.
6. We have labeled the flows in the pips and included calculations for capacity in the

Should you have any questions regarding this matter, please do not hesitate to call me.

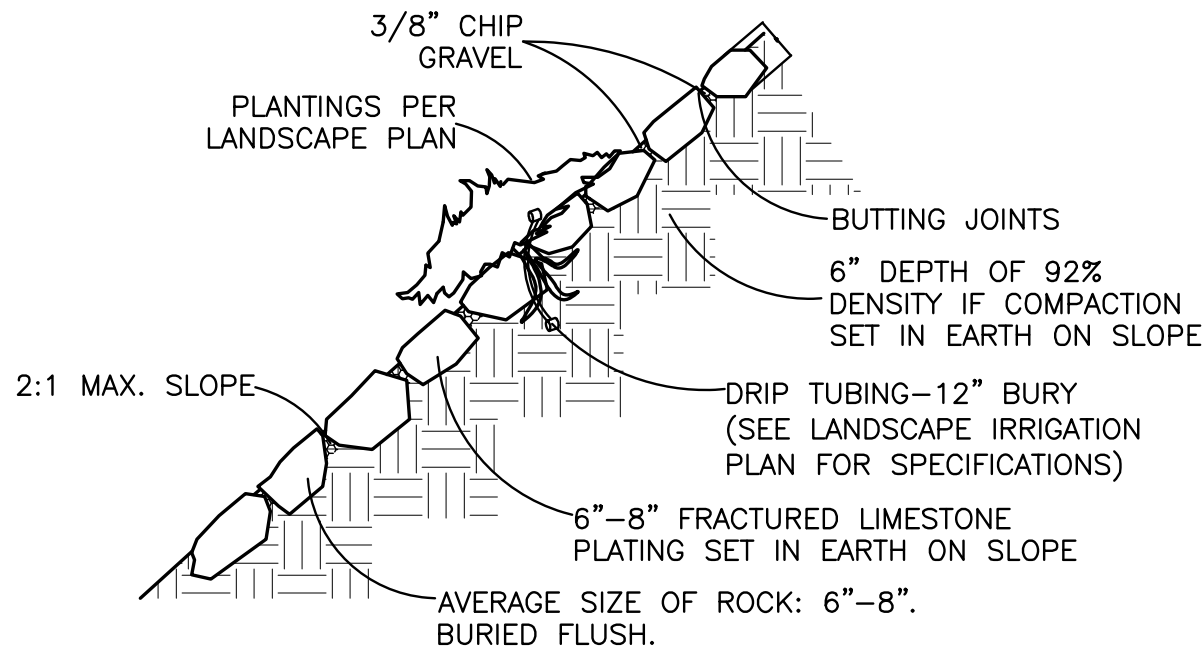
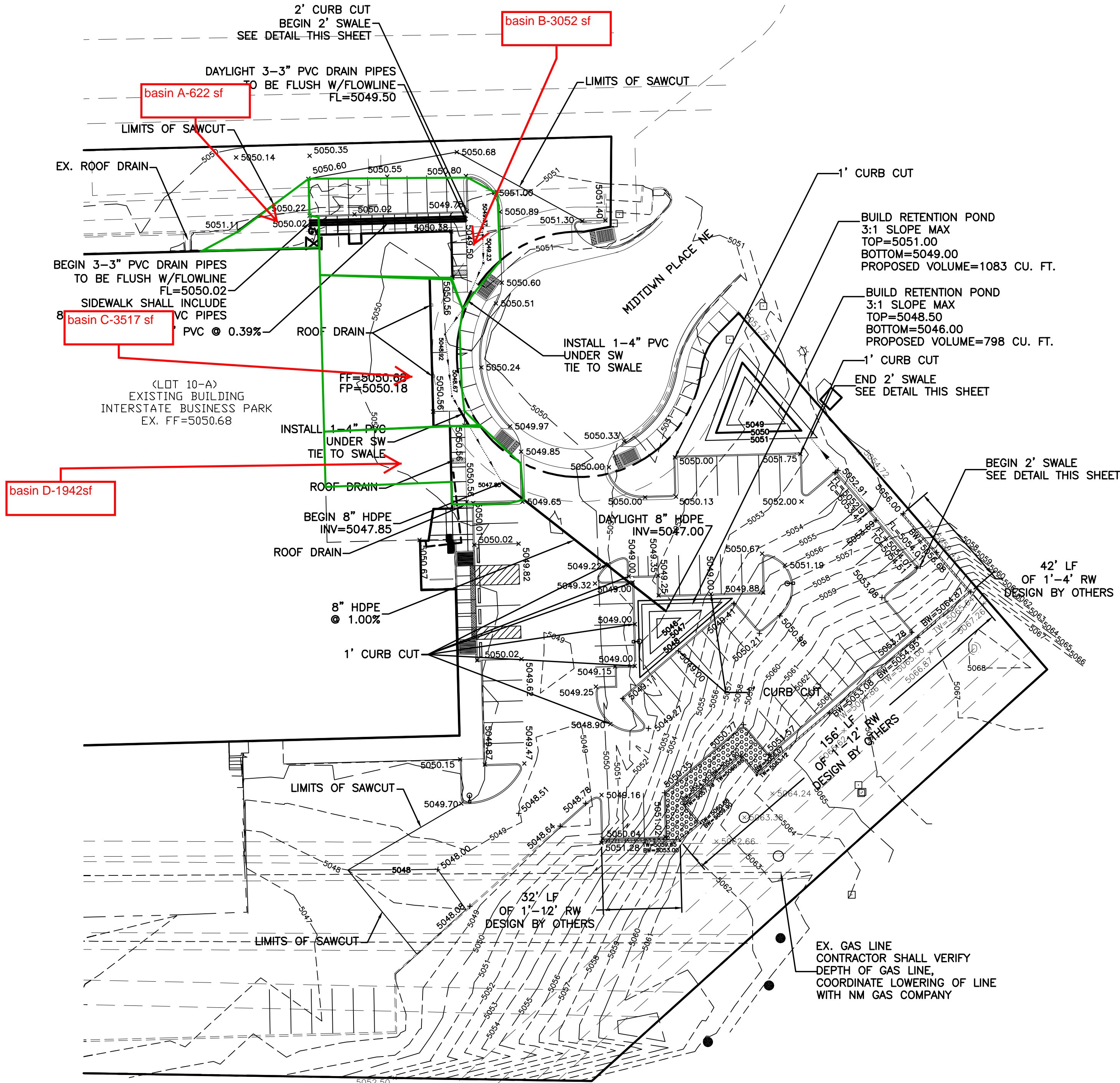
Sincerely,

David Soule, PE  
RIO GRANDE ENGINEERING  
PO Box 93924  
ALBUQUERQUE, NM 87199  
321-9099

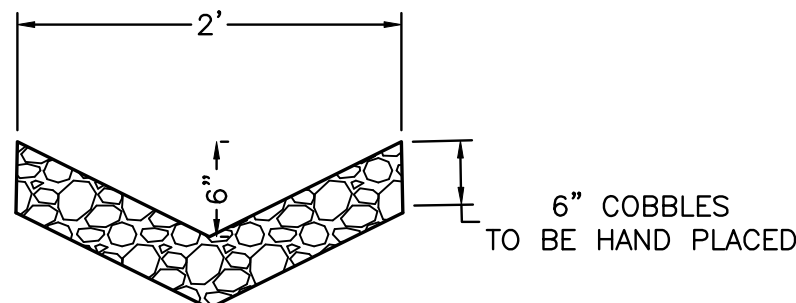


EROSION CONTROL NOTES:

1. CONTRACTOR IS RESPONSIBLE FOR OBTAINING A TOPSOIL DISTURBANCE PERMIT PRIOR TO BEGINNING WORK.
2. CONTRACTOR IS RESPONSIBLE FOR MAINTAINING RUN-OFF ON SITE DURING CONSTRUCTION.
3. CONTRACTOR IS RESPONSIBLE FOR CLEANING ALL SEDIMENT THAT GETS INTO EXISTING RIGHT-OF-WAY.
4. REPAIR OF DAMAGED FACILITIES AND CLEANUP OF SEDIMENT ACCUMULATIONS ON ADJACENT PROPERTIES AND IN PUBLIC FACILITIES IS THE RESPONSIBILITY OF THE CONTRACTOR.
5. ALL EXPOSED EARTH SURFACES MUST BE PROTECTED FROM WIND AND WATER EROSION PRIOR TO FINAL ACCEPTANCE OF ANY PROJECT.

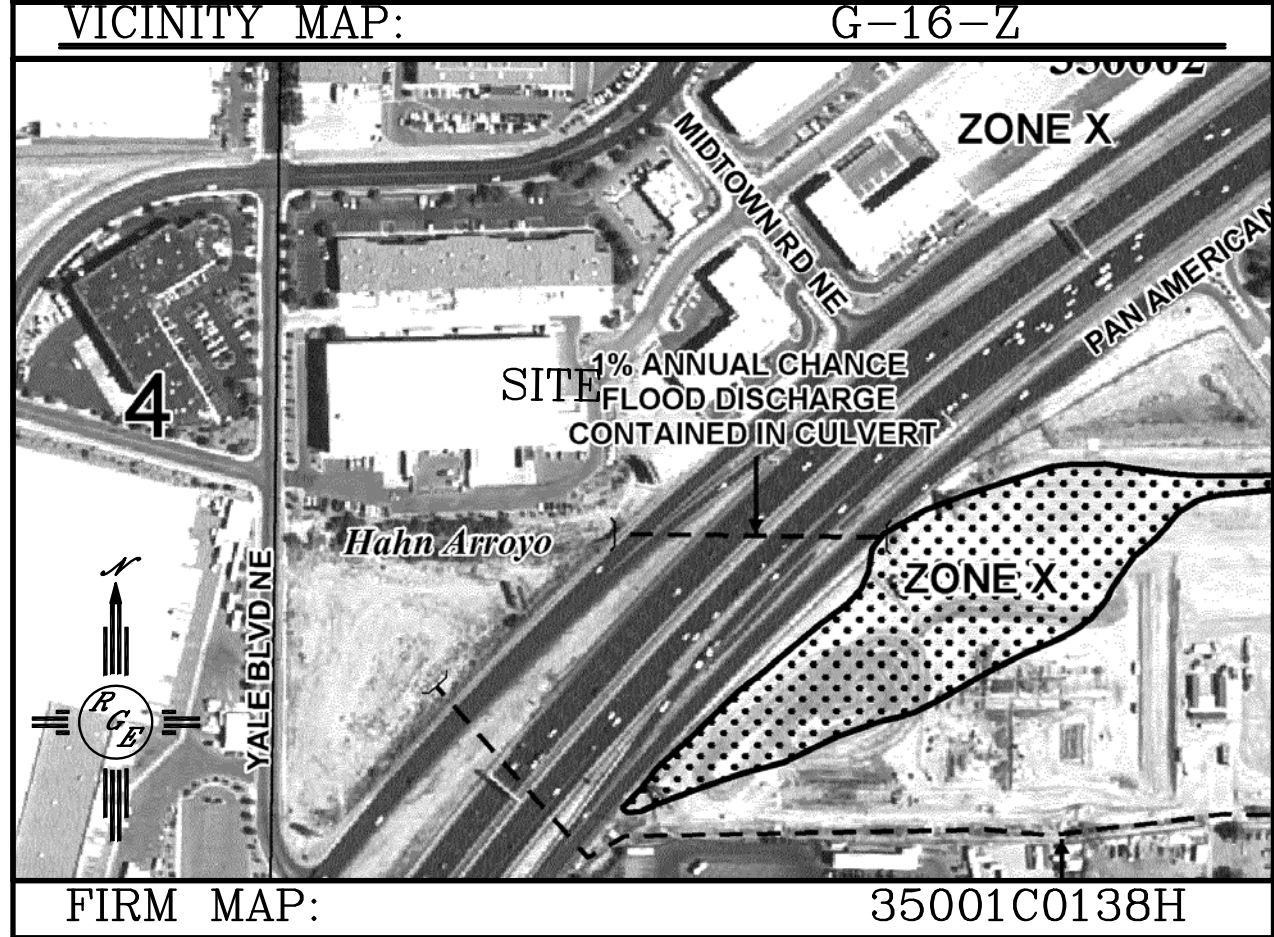
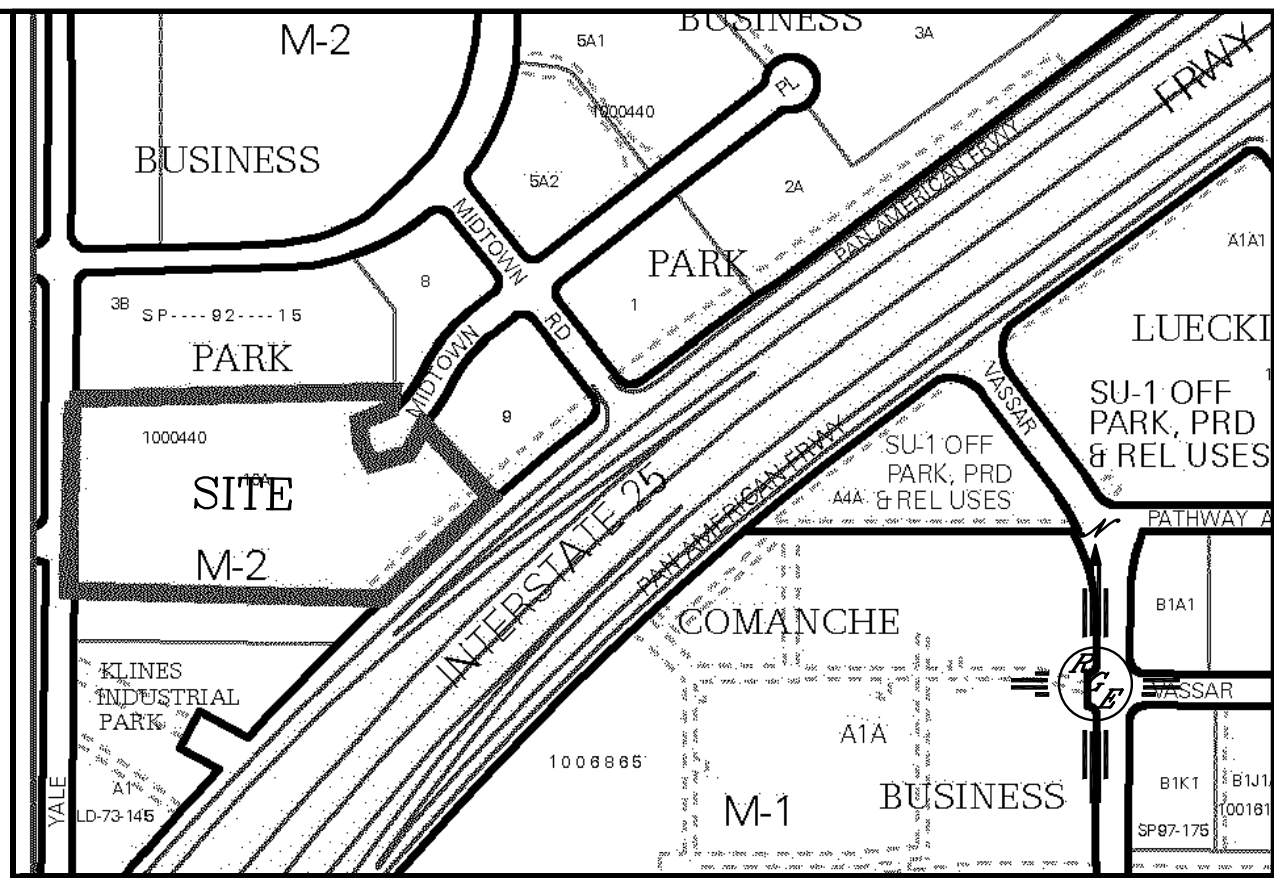


ROCK PLATING DETAIL  
NTS



COBBLE SWALE DETAIL  
NTS

**CAUTION:**  
EXISTING UTILITIES ARE NOT SHOWN. IT SHALL BE THE SOLE RESPONSIBILITY OF THE CONTRACTOR TO CONDUCT ALL NECESSARY FIELD INVESTIGATIONS PRIOR TO ANY EXCAVATION TO DETERMINE THE ACTUAL LOCATION OF UTILITIES & OTHER IMPROVEMENTS.



LEGAL DESCRIPTION:

LOT 10-A MIDTOWN BUSINESS PARK

NOTES:

1. ALL SPOT ELEVATIONS REPRESENT FLOWLINE ELEVATION UNLESS OTHERWISE NOTED.
2. ALL CURB AND GUTTER TO 6" HEADER UNLESS OTHERWISE NOTED.
3. ALL RETAINING WALL DESIGN SHALL BE BY OTHERS.

LEGEND

---	EXISTING CONTOUR
---	EXISTING INDEX CONTOUR
---	PROPOSED CONTOUR
---	PROPOSED INDEX CONTOUR
---	SLOPE TIE
×	EXISTING SPOT ELEVATION
×	PROPOSED SPOT ELEVATION
---	EX. STORM DRAIN
---	BOUNDARY
---	EASEMENT
---	CENTERLINE
---	RIGHT-OF-WAY
---	PROPOSED CURB
---	EXISTING CURB AND GUTTER
---	PROPOSED SIDEWALK
---	EXISTING SIDEWALK
---	PROPOSED RETAINING WALL (DESIGN BY OTHERS)
---	PROPOSED ROCK PLATING (SEE DETAIL THIS SHEET)

ROUGH GRADING APPROVAL

DATE

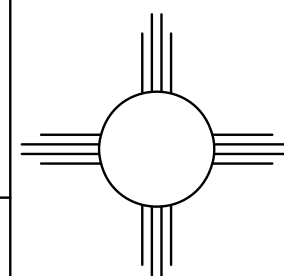
ENGINEER'S SEAL



8/1/15  
DAVID SOULE  
P.E. #14522

NATIONAL ELECTRIC

GRADING AND DRAINAGE PLAN



*Rio Grande Engineering*  
1806 CENTRAL AVENUE SE  
SUITE 201  
ALBUQUERQUE, NM 87106  
(505) 872-0999

DRAWN BY WCWJ

DATE

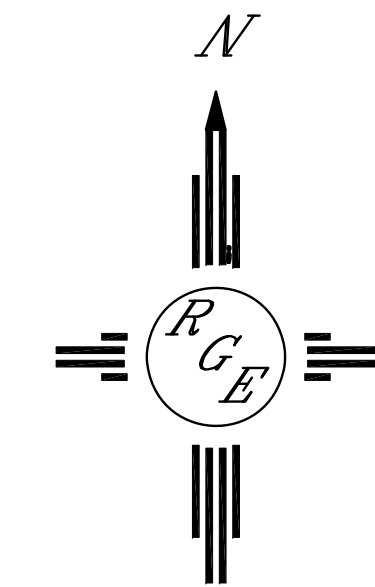
7-20-15

21514-LAYOUT-4-29-15

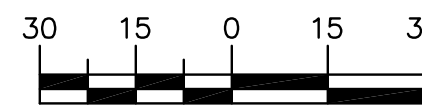
SHEET #

JOB #

21514



GRAPHIC SCALE

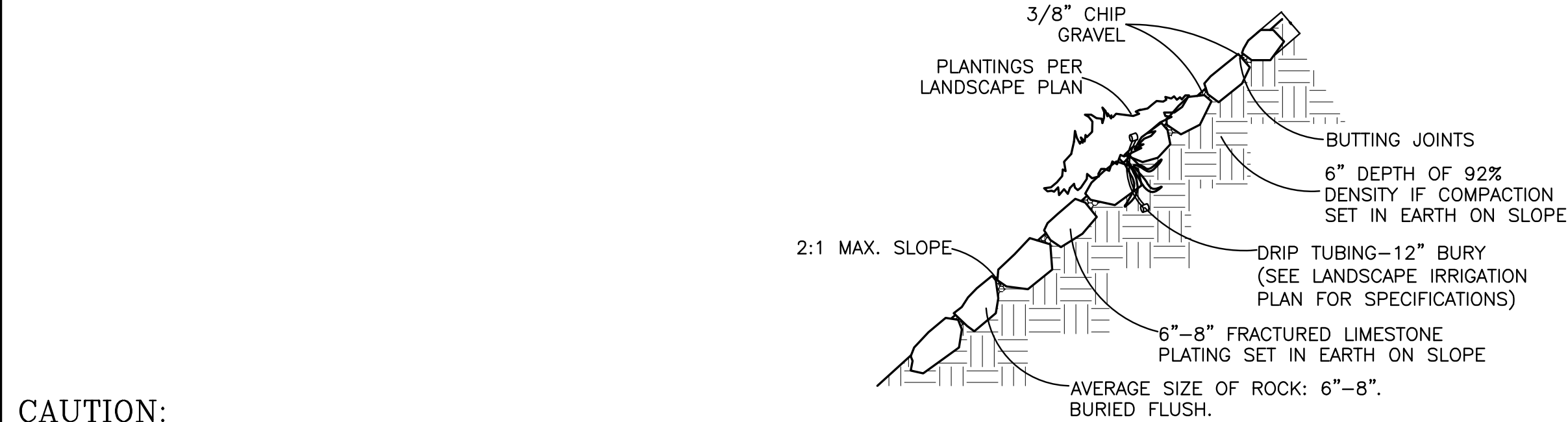
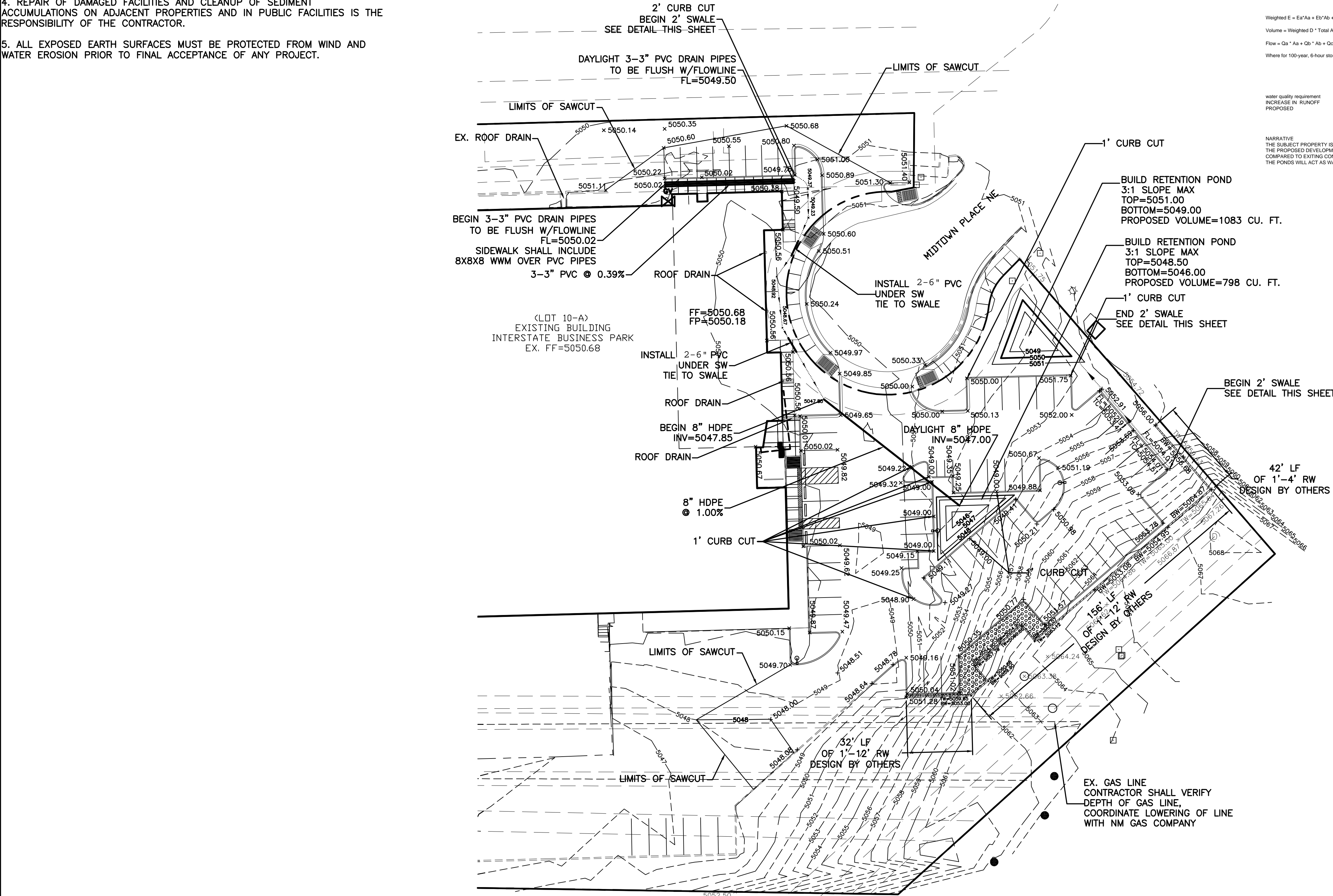


SCALE: 1"=30'



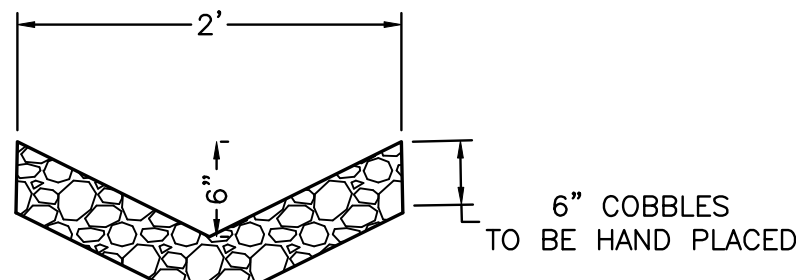
EROSION CONTROL NOTES:

1. CONTRACTOR IS RESPONSIBLE FOR OBTAINING A TOPSOIL DISTURBANCE PERMIT PRIOR TO BEGINNING WORK.
2. CONTRACTOR IS RESPONSIBLE FOR MAINTAINING RUN-OFF ON SITE DURING CONSTRUCTION.
3. CONTRACTOR IS RESPONSIBLE FOR CLEANING ALL SEDIMENT THAT GETS INTO EXISTING RIGHT-OF-WAY.
4. REPAIR OF DAMAGED FACILITIES AND CLEANUP OF SEDIMENT ACCUMULATIONS ON ADJACENT PROPERTIES AND IN PUBLIC FACILITIES IS THE RESPONSIBILITY OF THE CONTRACTOR.
5. ALL EXPOSED EARTH SURFACES MUST BE PROTECTED FROM WIND AND WATER EROSION PRIOR TO FINAL ACCEPTANCE OF ANY PROJECT.



**CAUTION:**  
EXISTING UTILITIES ARE NOT SHOWN. IT SHALL BE THE SOLE RESPONSIBILITY OF THE CONTRACTOR TO CONDUCT ALL NECESSARY FIELD INVESTIGATIONS PRIOR TO ANY EXCAVATION TO DETERMINE THE ACTUAL LOCATION OF UTILITIES & OTHER IMPROVEMENTS.

ROCK PLATING DETAIL  
NTS

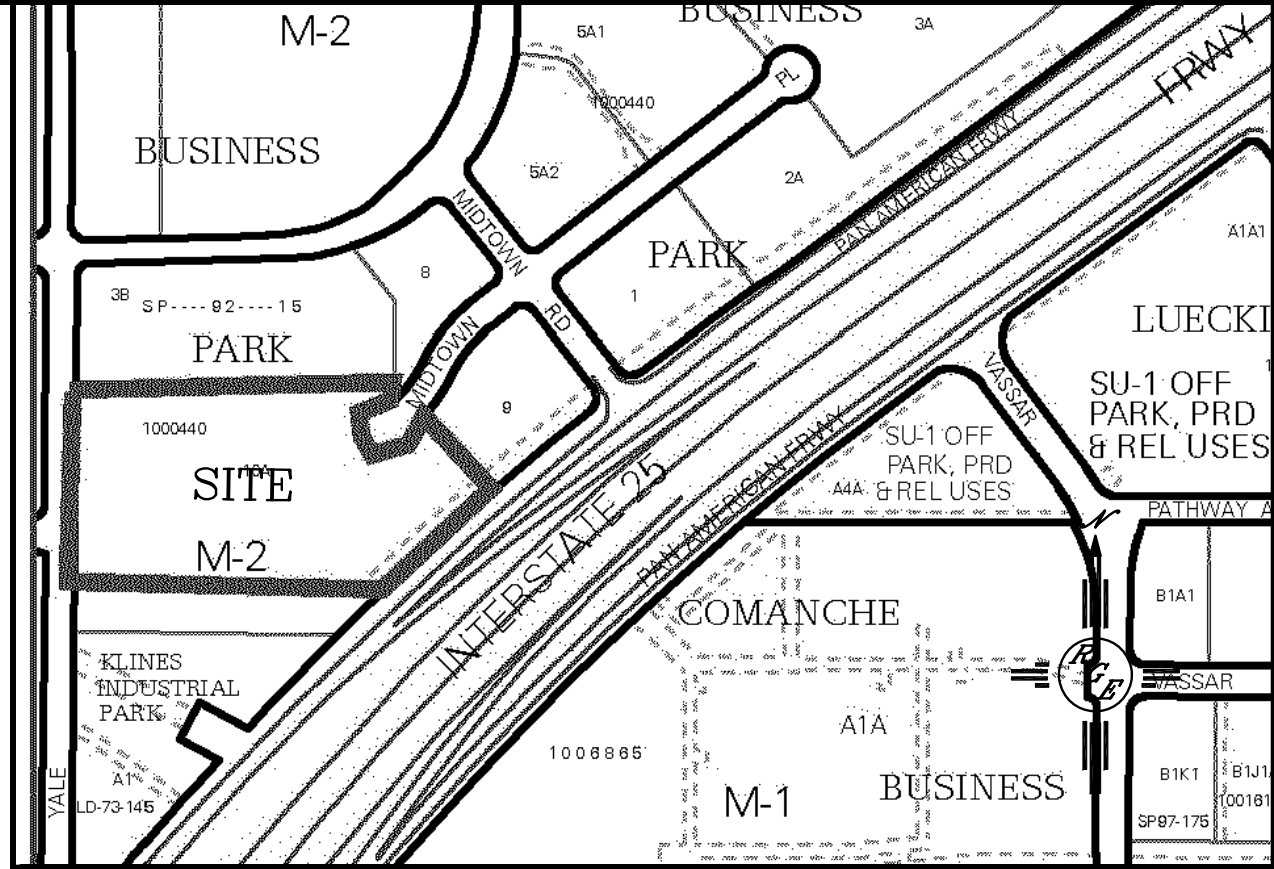


COBBLE SWALE DETAIL  
NTS

SITE HYDROLOGY  
**Weighted E Method**  
NATIONAL ELECTRIC ADDITION

Existing Developed Basins										
Basin	Area (sq ft)	Area (acres)	Treatment A %	Treatment B %	Treatment C %	Treatment D %	Weighted E (acres)	Volume (cu ft)	Flow (cfs)	Flow (gpm)
IMPERVIOUS AREA INCREASE	17240	0.396	0%	0.0%	0.00%	0.0%	0.396	2,120	0.000	1.36
NATIVE AREA DECREASE	17240	0.396	40%	0.15631	0.079	40.0%	0.15631	0.0%	0.000	0.00
SUBBASIN A	652	0.015	0%	0.0%	0.00%	0.0%	0.015	92	0.003	0.01
SUB BASIN B	3562	0.070	0%	0.0%	0.00%	30.0%	0.02102	70%	0.049	1.823
SUB BASIN C	3517	0.081	0%	0.0%	0.00%	20.0%	0.05155	60%	0.045	1.522
SUB BASIN D	1942	0.045	0%	0.0%	0.00%	40.0%	0.01763	60%	0.027	1.724

Equations:  
Weighted E = E<sup>a</sup>A<sup>a</sup> + E<sup>b</sup>A<sup>b</sup> + E<sup>c</sup>A<sup>c</sup> + E<sup>d</sup>A<sup>d</sup> / (Total Area)  
Volume = Weighted D \* Total Area  
Flow = Q<sup>a</sup> + Q<sup>b</sup> + Q<sup>c</sup> + Q<sup>d</sup> + Q<sup>e</sup> + Q<sup>f</sup> + Q<sup>g</sup> + Q<sup>h</sup> + Q<sup>i</sup> + Q<sup>j</sup> + Q<sup>k</sup> + Q<sup>l</sup> + Q<sup>m</sup> + Q<sup>n</sup> + Q<sup>o</sup> + Q<sup>p</sup> + Q<sup>q</sup> + Q<sup>r</sup> + Q<sup>s</sup> + Q<sup>t</sup> + Q<sup>u</sup> + Q<sup>v</sup> + Q<sup>w</sup> + Q<sup>x</sup> + Q<sup>y</sup> + Q<sup>z</sup> + Q<sup>aa</sup> + Q<sup>ab</sup> + Q<sup>ac</sup> + Q<sup>ad</sup> + Q<sup>ae</sup> + Q<sup>af</sup> + Q<sup>ag</sup> + Q<sup>ah</sup> + Q<sup>ai</sup> + Q<sup>aj</sup> + Q<sup>ak</sup> + Q<sup>al</sup> + Q<sup>am</sup> + Q<sup>an</sup> + Q<sup>ao</sup> + Q<sup>ap</sup> + Q<sup>aq</sup> + Q<sup>ar</sup> + Q<sup>as</sup> + Q<sup>at</sup> + Q<sup>au</sup> + Q<sup>av</sup> + Q<sup>aw</sup> + Q<sup>ax</sup> + Q<sup>ay</sup> + Q<sup>az</sup> + Q<sup>ba</sup> + Q<sup>bb</sup> + Q<sup>bc</sup> + Q<sup>bd</sup> + Q<sup>be</sup> + Q<sup>bf</sup> + Q<sup>bg</sup> + Q<sup>bh</sup> + Q<sup>bi</sup> + Q<sup>bj</sup> + Q<sup>bk</sup> + Q<sup>bl</sup> + Q<sup>bm</sup> + Q<sup>bn</sup> + Q<sup>bo</sup> + Q<sup>bp</sup> + Q<sup>bq</sup> + Q<sup>br</sup> + Q<sup>bs</sup> + Q<sup>bt</sup> + Q<sup>bu</sup> + Q<sup>bv</sup> + Q<sup>bw</sup> + Q<sup>bx</sup> + Q<sup>by</sup> + Q<sup>bz</sup> + Q<sup>ca</sup> + Q<sup>cb</sup> + Q<sup>cc</sup> + Q<sup>cd</sup> + Q<sup>ce</sup> + Q<sup>cf</sup> + Q<sup>cg</sup> + Q<sup>ch</sup> + Q<sup>ci</sup> + Q<sup>cj</sup> + Q<sup>ck</sup> + Q<sup>cl</sup> + Q<sup>cm</sup> + Q<sup>cn</sup> + Q<sup>co</sup> + Q<sup>cp</sup> + Q<sup>cq</sup> + Q<sup>cr</sup> + Q<sup>cs</sup> + Q<sup>ct</sup> + Q<sup>cu</sup> + Q<sup>cv</sup> + Q<sup>cw</sup> + Q<sup>cx</sup> + Q<sup>cy</sup> + Q<sup>cz</sup> + Q<sup>da</sup> + Q<sup>db</sup> + Q<sup>dc</sup> + Q<sup>dd</sup> + Q<sup>de</sup> + Q<sup>df</sup> + Q<sup>dg</sup> + Q<sup>dh</sup> + Q<sup>di</sup> + Q<sup>dj</sup> + Q<sup>dk</sup> + Q<sup>dl</sup> + Q<sup>dm</sup> + Q<sup>dn</sup> + Q<sup>do</sup> + Q<sup>dp</sup> + Q<sup>dq</sup> + Q<sup>dr</sup> + Q<sup>ds</sup> + Q<sup>dt</sup> + Q<sup>du</sup> + Q<sup>dv</sup> + Q<sup>dw</sup> + Q<sup>dx</sup> + Q<sup>dy</sup> + Q<sup>dz</sup> + Q<sup>ea</sup> + Q<sup>eb</sup> + Q<sup>ec</sup> + Q<sup>ed</sup> + Q<sup>ee</sup> + Q<sup>ef</sup> + Q<sup>eg</sup> + Q<sup>eh</sup> + Q<sup>ei</sup> + Q<sup>ej</sup> + Q<sup>ek</sup> + Q<sup>el</sup> + Q<sup>em</sup> + Q<sup>en</sup> + Q<sup>eo</sup> + Q<sup>ep</sup> + Q<sup>eq</sup> + Q<sup>er</sup> + Q<sup>es</sup> + Q<sup>et</sup> + Q<sup>eu</sup> + Q<sup>ev</sup> + Q<sup>ew</sup> + Q<sup>ex</sup> + Q<sup>ey</sup> + Q<sup>ez</sup> + Q<sup>fa</sup> + Q<sup>fb</sup> + Q<sup>fc</sup> + Q<sup>fd</sup> + Q<sup>fe</sup> + Q<sup>ff</sup> + Q<sup>fg</sup> + Q<sup>fh</sup> + Q<sup>fi</sup> + Q<sup>fj</sup> + Q<sup>fk</sup> + Q<sup>fl</sup> + Q<sup>fm</sup> + Q<sup>fn</sup> + Q<sup>fo</sup> + Q<sup>fp</sup> + Q<sup>fq</sup> + Q<sup>fr</sup> + Q<sup>fs</sup> + Q<sup>ft</sup> + Q<sup>fu</sup> + Q<sup>fv</sup> + Q<sup>fw</sup> + Q<sup>fx</sup> + Q<sup>fy</sup> + Q<sup>fz</sup> + Q<sup>ga</sup> + Q<sup>gb</sup> + Q<sup>gc</sup> + Q<sup>gd</sup> + Q<sup>ge</sup> + Q<sup>gf</sup> + Q<sup>gg</sup> + Q<sup>gh</sup> + Q<sup>gi</sup> + Q<sup>gj</sup> + Q<sup>gk</sup> + Q<sup>gl</sup> + Q<sup>gm</sup> + Q<sup>gn</sup> + Q<sup>go</sup> + Q<sup>gp</sup> + Q<sup>gq</sup> + Q<sup>gr</sup> + Q<sup>gs</sup> + Q<sup>gt</sup> + Q<sup>gu</sup> + Q<sup>gv</sup> + Q<sup>gw</sup> + Q<sup>gx</sup> + Q<sup>gy</sup> + Q<sup>gz</sup> + Q<sup>ha</sup> + Q<sup>hb</sup> + Q<sup>hc</sup> + Q<sup>hd</sup> + Q<sup>he</sup> + Q<sup>hf</sup> + Q<sup>hg</sup> + Q<sup>hh</sup> + Q<sup>hi</sup> + Q<sup>hj</sup> + Q<sup>hk</sup> + Q<sup>hl</sup> + Q<sup>hm</sup> + Q<sup>hn</sup> + Q<sup>ho</sup> + Q<sup>hp</sup> + Q<sup>hq</sup> + Q<sup>hr</sup> + Q<sup>hs</sup> + Q<sup>ht</sup> + Q<sup>hu</sup> + Q<sup>hv</sup> + Q<sup>hw</sup> + Q<sup>hx</sup> + Q<sup>hy</sup> + Q<sup>hz</sup> + Q<sup>ia</sup> + Q<sup>ib</sup> + Q<sup>ic</sup> + Q<sup>id</sup> + Q<sup>ie</sup> + Q<sup>if</sup> + Q<sup>ig</sup> + Q<sup>ih</sup> + Q<sup>ii</sup> + Q<sup>ij</sup> + Q<sup>ik</sup> + Q<sup>il</sup> + Q<sup>im</sup> + Q<sup>in</sup> + Q<sup>io</sup> + Q<sup>ip</sup> + Q<sup>iq</sup> + Q<sup>ir</sup> + Q<sup>is</sup> + Q<sup>it</sup> + Q<sup>iu</sup> + Q<sup>iv</sup> + Q<sup>iw</sup> + Q<sup>ix</sup> + Q<sup>iy</sup> + Q<sup>iz</sup> + Q<sup>ja</sup> + Q<sup>jb</sup> + Q<sup>jc</sup> + Q<sup>jd</sup> + Q<sup>je</sup> + Q<sup>jf</sup> + Q<sup>jh</sup> + Q<sup>ji</sup> + Q<sup>jj</sup> + Q<sup>jk</sup> + Q<sup>jl</sup> + Q<sup>jm</sup> + Q<sup>jn</sup> + Q<sup>jo</sup> + Q<sup>jp</sup> + Q<sup>jq</sup> + Q<sup>jr</sup> + Q<sup>js</sup> + Q<sup>jt</sup> + Q<sup>ju</sup> + Q<sup>jv</sup> + Q<sup>jw</sup> + Q<sup>jx</sup> + Q<sup>ky</sup> + Q<sup>kz</sup> + Q<sup>la</sup> + Q<sup>lb</sup> + Q<sup>lc</sup> + Q<sup>ld</sup> + Q<sup>le</sup> + Q<sup>lf</sup> + Q<sup>lg</sup> + Q<sup>lh</sup> + Q<sup>li</sup> + Q<sup>lj</sup> + Q<sup>lk</sup> + Q<sup>ll</sup> + Q<sup>lm</sup> + Q<sup>ln</sup> + Q<sup>lo</sup> + Q<sup>lp</sup> + Q<sup>lq</sup> + Q<sup>lr</sup> + Q<sup>ls</sup> + Q<sup>lt</sup> + Q<sup>lu</sup> + Q<sup>lv</sup> + Q<sup>lw</sup> + Q<sup>lx</sup> + Q<sup>ly</sup> + Q<sup>lz</sup> + Q<sup>ma</sup> + Q<sup>mb</sup> + Q<sup>mc</sup> + Q<sup>md</sup> + Q<sup>me</sup> + Q<sup>mf</sup> + Q<sup>mg</sup> + Q<sup>mh</sup> + Q<sup>mi</sup> + Q<sup>mj</sup> + Q<sup>mk</sup> + Q<sup>ml</sup> + Q<sup>mm</sup> + Q<sup>mn</sup> + Q<sup>mo</sup> + Q<sup>mp</sup> + Q<sup>mq</sup> + Q<sup>mr</sup> + Q<sup>ms</sup> + Q<sup>mt</sup> + Q<sup>mu</sup> + Q<sup>mv</sup> + Q<sup>mw</sup> + Q<sup>mx</sup> + Q<sup>my</sup> + Q<sup>mz</sup> + Q<sup>na</sup> + Q<sup>nb</sup> + Q<sup>nc</sup> + Q<sup>nd</sup> + Q<sup>ne</sup> + Q<sup>nf</sup> + Q<sup>ng</sup> + Q<sup>nh</sup> + Q<sup>ni</sup> + Q<sup>nj</sup> + Q<sup>nk</sup> + Q<sup>nl</sup> + Q<sup>nm</sup> + Q<sup>nn</sup> + Q<sup>no</sup> + Q<sup>np</sup> + Q<sup>nq</sup> + Q<sup>nr</sup> + Q<sup>ns</sup> + Q<sup>nt</sup> + Q<sup>nu</sup> + Q<sup>nv</sup> + Q<sup>nw</sup> + Q<sup>nx</sup> + Q<sup>ny</sup> + Q<sup>nz</sup> + Q<sup>oa</sup> + Q<sup>ob</sup> + Q<sup>oc</sup> + Q<sup>od</sup> + Q<sup>oe</sup> + Q<sup>of</sup> + Q<sup>og</sup> + Q<sup>oh</sup> + Q<sup>oi</sup> + Q<sup>oj</sup> + Q<sup>ok</sup> + Q<sup>ol</sup> + Q<sup>om</sup> + Q<sup>on</sup> + Q<sup>oo</sup> + Q<sup>op</sup> + Q<sup>oq</sup> + Q<sup>or</sup> + Q<sup>os</sup> + Q<sup>ot</sup> + Q<sup>ou</sup> + Q<sup>ov</sup> + Q<sup>ow</sup> + Q<sup>ox</sup> + Q<sup>oy</sup> + Q<sup>oz</sup> + Q<sup>pa</sup> + Q<sup>pb</sup> + Q<sup>pc</sup> + Q<sup>pd</sup> + Q<sup>pe</sup> + Q<sup>pf</sup> + Q<sup>pg</sup> + Q<sup>ph</sup> + Q<sup>pi</sup> + Q<sup>pj</sup> + Q<sup>pk</sup> + Q<sup>pl</sup> + Q<sup>pm</sup> + Q<sup>pn</sup> + Q<sup>po</sup> + Q<sup>pp</sup> + Q<sup>pq</sup> + Q<sup>pr</sup> + Q<sup>ps</sup> + Q<sup>pt</sup> + Q<sup>pu</sup> + Q<sup>pv</sup> + Q<sup>pw</sup> + Q<sup>px</sup> + Q<sup>py</sup> + Q<sup>pz</sup> + Q<sup>qa</sup> + Q<sup>qb</sup> + Q<sup>qc</sup> + Q<sup>qd</sup> + Q<sup>qe</sup> + Q<sup>qf</sup> + Q<sup>qg</sup> + Q<sup>qh</sup> + Q<sup>qi</sup> + Q<sup>qj</sup> + Q<sup>qk</sup> + Q<sup>ql</sup> + Q<sup>qm</sup> + Q<sup>qn</sup> + Q<sup>qo</sup> + Q<sup>qp</sup> + Q<sup>qq</sup> + Q<sup>qr</sup> + Q<sup>qs</sup> + Q<sup>qt</sup> + Q<sup>qu</sup> + Q<sup>qv</sup> + Q<sup>qw</sup> + Q<sup>qx</sup> + Q<sup>qy</sup> + Q<sup>qz</sup> + Q<sup>ra</sup> + Q<sup>rb</sup> + Q<sup>rc</sup> + Q<sup>rd</sup> + Q<sup>re</sup> + Q<sup>rf</sup> + Q<sup>rg</sup> + Q<sup>rh</sup> + Q<sup>ri</sup> + Q<sup>rj</sup> + Q<sup>rk</sup> + Q<sup>rl</sup> + Q<sup>rm</sup> + Q<sup>rn</sup> + Q<sup>ro</sup> + Q<sup>rp</sup> + Q<sup>rq</sup> + Q<sup>rr</sup> + Q<sup>rs</sup> + Q<sup>rt</sup> + Q<sup>ru</sup> + Q<sup>rv</sup> + Q<sup>rw</sup> + Q<sup>rx</sup> + Q<sup>ry</sup> + Q<sup>rz</sup> + Q<sup>sa</sup> + Q<sup>sb</sup> + Q<sup>sc</sup> + Q<sup>sd</sup> + Q<sup>se</sup> + Q<sup>sf</sup> + Q<sup>sg</sup> + Q<sup>sh</sup> + Q<sup>si</sup> + Q<sup>sj</sup> + Q<sup>sk</sup> + Q<sup>sl</sup> + Q<sup>sm</sup> + Q<sup>sn</sup> + Q<sup>so</sup> + Q<sup>sp</sup> + Q<sup>sq</sup> + Q<sup>sr</sup> + Q<sup>ss</sup> + Q<sup>st</sup> + Q<sup>su</sup> + Q<sup>sv</sup> + Q<sup>sw</sup> + Q<sup>sx</sup> + Q<sup>sy</sup> + Q<sup>sz</sup> + Q<sup>ta</sup> + Q<sup>tb</sup> + Q<sup>tc</sup> + Q<sup>td</sup> + Q<sup>te</sup> + Q<sup>tf</sup> + Q<sup>tg</sup> + Q<sup>th</sup> + Q<sup>ti</sup> + Q<sup>tj</sup> + Q<sup>tk</sup> + Q<sup>tl</sup> + Q<sup>tm</sup> + Q<sup>tn</sup> + Q<sup>to</sup> + Q<sup>tp</sup> + Q<sup>tq</sup> + Q<sup>tr</sup> + Q<sup>ts</sup> + Q<sup>tt</sup> + Q<sup>tu</sup> + Q<sup>tv</sup> + Q<sup>tw</sup> + Q<sup>tx</sup> + Q<sup>ty</sup> + Q<sup>tz</sup> + Q<sup>ua</sup> + Q<sup>ub</sup> + Q<sup>uc</sup> + Q<sup>ud</sup> + Q<sup>ue</sup> + Q<sup>uf</sup> + Q<sup>ug</sup> + Q<sup>uh</sup> + Q<sup>ui</sup> + Q<sup>uj</sup> + Q<sup>uk</sup> + Q<sup>ul</sup> + Q<sup>um</sup> + Q<sup>un</sup> + Q<sup>uo</sup> + Q<sup>up</sup> + Q<sup>uq</sup> + Q<sup>ur</sup> + Q<sup>us</sup> + Q<sup>ut</sup> + Q<sup>uu</sup> + Q<sup>uv</sup> + Q<sup>uw</sup> + Q<sup>ux</sup> + Q<sup>uy</sup> + Q<sup>uz</sup> + Q<sup>va</sup> + Q<sup>vb</sup> + Q<sup>vc</sup> + Q<sup>vd</sup> + Q<sup>ve</sup> + Q<sup>vf</sup> + Q<sup>vg</sup> + Q<sup>vh</sup> + Q<sup>vi</sup> + Q<sup>vj</sup> + Q<sup>vk</sup> + Q<sup>vl</sup> + Q<sup>vm</sup> + Q<sup>vn</sup> + Q<sup>vo</sup> + Q<sup>vp</sup> + Q<sup>vq</sup> + Q<sup>vr</sup> + Q<sup>vs</sup> + Q<sup>vt</sup> + Q<sup>vu</sup> + Q<sup>vv</sup> + Q<sup>vw</sup> + Q<sup>vx</sup> + Q<sup>vy</sup> + Q<sup>vz</sup> + Q<sup>wa</sup> + Q<sup>wb</sup> + Q<sup>wc</sup> + Q<sup>wd</sup> + Q<sup>we</sup> + Q<sup>wf</sup> + Q<sup>wg</sup> + Q<sup>wh</sup> + Q<sup>wi</sup> + Q<sup>wj</sup> + Q<sup>wk</sup> + Q<sup>wl</sup> + Q<sup>wm</sup> + Q<sup>wn</sup> + Q<sup>wo</sup> + Q<sup>wp</sup> + Q<sup>wq</sup> + Q<sup>wr</sup> + Q<sup>ws</sup> + Q<sup>wt</sup> + Q<sup>wu</sup> + Q<sup>wv</sup> + Q<sup>ww</sup> + Q<sup>wx</sup> + Q<sup>wy</sup> + Q<sup>wz</sup> + Q<sup>xa</sup> + Q<sup>xb</sup> + Q<sup>xc</sup> + Q<sup>xd</sup> + Q<sup>xe</sup> + Q<sup>xf</sup> + Q<sup>xg</sup> + Q<sup>xh</sup> + Q<sup>xi</sup> + Q<sup>xj</sup> + Q<sup>xk</sup> + Q<sup>xl</sup> + Q<sup>xm</sup> + Q<sup>xn</sup> + Q<sup>xo</sup> + Q<sup>xp</sup> + Q<sup>xq</sup> + Q<sup>xr</sup> + Q<sup>xs</sup> + Q<sup>xt</sup> + Q<sup>xu</sup> + Q<sup>xv</sup> + Q<sup>xw</sup> + Q<sup>xx</sup> + Q<sup>xy</sup> + Q<sup>xz</sup> + Q<sup>ya</sup> + Q<sup>yb</sup> + Q<sup>yc</sup> + Q<sup>yd</sup> + Q<sup>ye</sup> + Q<sup>yf</sup> + Q<sup>yg</sup> + Q<sup>yh</sup> + Q<sup>yi</sup> + Q<sup>yj</sup> + Q<sup>yk</sup> + Q<sup>yl</sup> + Q<sup>ym</sup> + Q<sup>yn</sup> + Q<sup>yo</sup> + Q<sup>yp</sup> + Q<sup>yq</sup> + Q<sup>yr</sup> + Q<sup>ys</sup> + Q<sup>yt</sup> + Q<sup>yu</sup> + Q<sup>yv</sup> + Q<sup>yw</sup> + Q<sup>yx</sup> + Q<sup>yy</sup> + Q<sup>yz</sup> + Q<sup>za</sup> + Q<sup>zb</sup> + Q<sup>zc</sup> + Q<sup>zd</sup> + Q<sup>ze</sup> + Q<sup>zf</sup> + Q<sup>zg</sup> + Q<sup>zh</sup> + Q<sup>zi</sup> + Q<sup>zj</sup> + Q<sup>zk</sup> + Q<sup>zl</sup> + Q<sup>zm</sup> + Q<sup>zn</sup> + Q<sup>zo</sup> + Q<sup>zp</sup> + Q<sup>zq</sup> + Q<sup>zr</sup> + Q<sup>zs</sup> + Q<sup>zt</sup> + Q<sup>zu</sup> + Q<sup>zv</sup> + Q<sup>zw</sup> + Q<sup>zx</sup> + Q<sup>zy</sup> + Q<sup>zz</sup>



**LEGAL DESCRIPTION:**  
LOT 10-A MIDTOWN BUSINESS PARK

- NOTES:**
1. ALL SPOT ELEVATIONS REPRESENT FLOWLINE ELEVATION UNLESS OTHERWISE NOTED.
  2. ALL CURB AND GUTTER TO 6" HEADER UNLESS OTHERWISE NOTED.
  3. ALL RETAINING WALL DESIGN SHALL BE BY OTHERS.

**LEGEND**

---	EXISTING CONTOUR
---	EXISTING INDEX CONTOUR
---	PROPOSED CONTOUR
---	PROPOSED INDEX CONTOUR
---	SLOPE TIE
x	EXISTING SPOT ELEVATION
x	PROPOSED SPOT ELEVATION
---	EX. STORM DRAIN
---	BOUNDARY
---	EASEMENT
---	CENTERLINE
---	RIGHT-OF-WAY
---	PROPOSED CURB
---	EXISTING CURB AND GUTTER
---	PROPOSED SIDEWALK
---	EXISTING SIDEWALK
---	PROPOSED RETAINING WALL (DESIGN BY OTHERS)
---	PROPOSED ROCK PLATING (SEE DETAIL THIS SHEET)

ROUGH GRADING APPROVAL DATE

	NATIONAL ELECTRIC		DRAWN BY WCWJ
	GRADING AND DRAINAGE PLAN		DATE 7-20-15
	21514-LAYOUT-4-29-15		SHEET #
8/1/15			JOB # 21514
DAVID SOULE P.E. #14522	1806 CENTRAL AVENUE SE SUITE 201 ALBUQUERQUE, NM 87106 (505) 872-0999		