

# CITY OF ALBUQUERQUE



April 20, 2018

AFRA Construction & Design  
Tafazzul Hussain  
2501 Yale Blvd. SE  
Albuquerque, NM 87106

**Re: Extra Space Storage  
4100 Yale Blvd. NE  
Traffic Circulation Layout  
Engineer's/Architect's Stamp 04-19-18 (G16D095F)**

Dear Mr. Hussain,

The TCL submittal received 04-19-18 is approved for Building Permit. A copy of the stamped and signed plan will be needed for each of the building permit plans. Please keep the original to be used for certification of the site for final C.O. for Transportation.

When the site construction is completed and a Certificate of Occupancy (C.O.) is requested, use the original City stamped approved TCL for certification. Redline any minor changes and adjustments that were made in the field. A NM registered architect or engineer must stamp, sign, and date the certification TCL along with indicating that the development was built in "substantial compliance" with the TCL. Submit this certification TCL with a completed Drainage and Transportation Information Sheet to front counter personnel for log in and evaluation by Transportation.

Once verification of certification is completed and approved, notification will be made to Building Safety to issue Final C.O. To confirm that a final C.O. has been issued, call Building Safety at 924-3690.

Sincerely,

Ernest Armijo, P.E.  
Senior Engineer, Planning Dept.  
Development Review Services

via: email  
C: File



# City of Albuquerque

Planning Department

Development & Building Services Division

## DRAINAGE AND TRANSPORTATION INFORMATION SHEET (REV 3/2018)

**Project Title:** EXTRA SPACE STORAGE **Building Permit #:** \_\_\_\_\_ **Hydrology File #:** G160095F  
**DRB#:** \_\_\_\_\_ **EPC#:** \_\_\_\_\_ **Work Order#:** \_\_\_\_\_  
**Legal Description:** TRACT A-1, KLINE INDUSTRIAL PARK  
**City Address:** 4100 TALE BLVD. NE

**Applicant:** AFRA CONSTRUCTION & DESIGN **Contact:** HUSSAIN  
**Address:** 2501 TALE BLVD. SE 87106  
**Phone#:** 505-242-1745 **Fax#:** 505-242-1737 **E-mail:** thussain@afraconstruction.com

**Other Contact:** \_\_\_\_\_ **Contact:** \_\_\_\_\_  
**Address:** \_\_\_\_\_  
**Phone#:** \_\_\_\_\_ **Fax#:** \_\_\_\_\_ **E-mail:** \_\_\_\_\_

Check all that Apply:

IS THIS A RESUBMITTAL?: ☒ Yes ☐ No

### DEPARTMENT:

☐ HYDROLOGY/ DRAINAGE  
☐ TRAFFIC/ TRANSPORTATION

### TYPE OF APPROVAL/ACCEPTANCE SOUGHT:

☐ BUILDING PERMIT APPROVAL  
☐ CERTIFICATE OF OCCUPANCY  
☐ PRELIMINARY PLAT APPROVAL  
☐ SITE PLAN FOR SUB'D APPROVAL  
☐ SITE PLAN FOR BLDG. PERMIT APPROVAL  
☐ FINAL PLAT APPROVAL

### TYPE OF SUBMITTAL:

☐ ENGINEER/ARCHITECT CERTIFICATION  
☐ PAD CERTIFICATION  
☐ CONCEPTUAL G & D PLAN  
☐ GRADING PLAN  
☐ DRAINAGE MASTER PLAN  
☐ DRAINAGE REPORT  
☐ FLOODPLAIN DEVELOPMENT PERMIT APPLICATION  
☐ ELEVATION CERTIFICATE  
☐ CLOMR/LOMR

☒ TRAFFIC CIRCULATION LAYOUT (TCL)  
☐ TRAFFIC IMPACT STUDY (TIS)

☐ OTHER (SPECIFY) \_\_\_\_\_  
☐ PRE-DESIGN MEETING?

☐ SIA/ RELEASE OF FINANCIAL GUARANTEE  
☐ FOUNDATION PERMIT APPROVAL  
☐ GRADING PERMIT APPROVAL  
☐ SO-19 APPROVAL  
☐ PAVING PERMIT APPROVAL  
☐ GRADING/ PAD CERTIFICATION  
☐ WORK ORDER APPROVAL  
☐ CLOMR/LOMR  
☐ FLOODPLAIN DEVELOPMENT PERMIT  
☐ OTHER (SPECIFY) \_\_\_\_\_

DATE SUBMITTED: 04.19.18

By: [Signature]

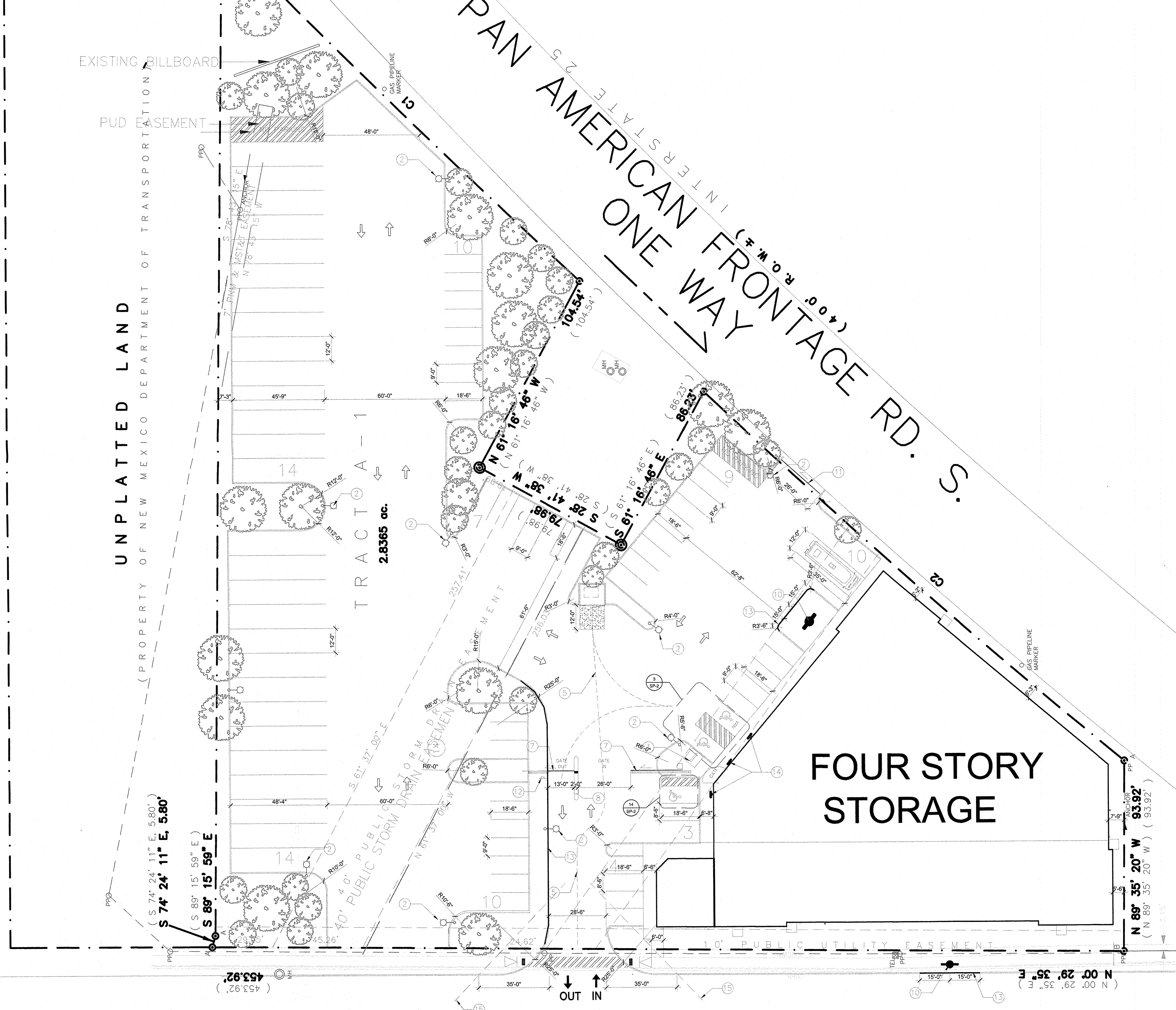
COA STAFF:

ELECTRONIC SUBMITTAL RECEIVED: \_\_\_\_\_

FEE PAID: \_\_\_\_\_



ACS MONUMENT "1-25-20"  
x = 390,403.88  
y = 1,502,304.95  
Ground-to-Grid:  
0.9996708  
Delta Alpha: -00°12'39"  
NAD 1927



TRAFFIC CIRCULATION LAYOUT  
APPROVED  
Signed: 8/6 Date: 4/24/18

KEYED NOTES

1. BIKE RACK SEE , FOR (4) BIKES, SEE 8/SP-2.
2. LIGHT POLE SEE , 2/SP-2.
3. ACCESSIBLE PARKING SIGNAGE, SEE 1/SP-2.
4. CONCRETE PARKING BUMPER, SEE 9/SP-2.
5. TRUCK PATH
6. TRUNCATED DOME MATT PER ADA.
7. SLIDING ELECTRIC GATE .
8. KEYPAD PEDESTAL.
9. PEDESTRIAN PATHWAY, SEE 8/SP-2.
10. NEW FIRE HYDRANT PER FIRE 1 .
11. MANUAL SLIDING GATE.
12. DO NOT ENTER SIGN ON CITY APPROVED POST AND CITY APPROVED HEIGHT FROM GRADE, SEE 15/SP-2.
13. PAINT CURB RED.
14. ADA PARKING SIGN,SEE 1/SP.2.
15. CLEAR SIGHT TRIANGLE .

LEGAL DESCRIPTION

LOTS 31 AND 32, BLOCK 4  
TRACT 2, UNIT 3  
LOT AREA: 1 ACRE  
NORTH ALBUQUERQUE ACRES  
CITY OF ALBUQUERQUE,  
BERNALILLO COUNTY, NEW MEXICO  
FEBRUARY, 2016

GENERAL INFORMATION

ALL REQUIRED INFRASTRUCTURE WILL BE CONSTRUCTED IN CONFORMANCE WITH THE CITY OF ALBUQUERQUE STANDARD SPECIFICATIONS AND DRAWINGS.

DRIVE PADS - AND SIDEWALK COA STD DWG 2430  
CURB AND GUTTER COA STD DWG 2415 A & B  
WHEEL CHAIR RAMPS COA STD DWG 2440 AND 2441  
PAVEMENT COA STD DWG 2408

THE PROPOSED RETAINING WALLS WILL BE COLORED TO MATCH THE BUILDING STUCCO.

GROUND MOUNTED EQUIPMENT SCREENING SHALL BE DESIGNED TO ALLOW FOR ACCESS TO UTILITY FACILITIES. ALL SCREENING AND VEGETATION SURROUNDING GROUND-MOUNTED TRANSFORMERS AND UTILITY PADS ARE TO ALLOW 10' OF CLEARANCE IN FRONT OF THE EQUIPMENT DOOR AND 5'-6' OF CLEARANCE ON THE REMAINING THREE SIDES FOR SAFE OPERATION, MAINTENANCE, AND REPAIR PURPOSES.

THE DEVELOPER SHALL CONTACT PNM'S NEW SERVICE DELIVERY DEPARTMENT TO COORDINATE ELECTRIC SERVICE REGARDING THIS PROJECT. PNM'S STANDARD FOR PUBLIC UTILITY EASEMENTS FOR DISTRIBUTION IS 10' IN WIDTH TO ENSURE ADEQUATE, SAFE, CLEARANCES. CONTACT: PNM-ELECTRIC SERVICE PHONE: (505)241-3425

ALL LANDSCAPE SHALL BE AT GRADE WITH PARKING AREAS.

ALL IMPROVEMENTS LOCATED IN THE RIGHT OF WAY MUST BE INCLUDED IN THE WORK ORDER.

LANDSCAPING AND SIGNAGE WILL NOT INTERFERE WITH CLEAR SIGHT REQUIREMENTS. SIGNS, WALLS, TREES, AND SHRUBBERY BETWEEN 3 AND 8 FEET TALL (AS MEASURED FROM THE GUTTER PAN) WILL NOT BE ACCEPTABLE IN THE CLEAR SIGHT TRIANGLE.

PARKING ANALYSIS

ZONING:	
WAREHOUSE	96,480 SF / 2000 ----- =48
RECEPTION/RETAIL	600 SF / 200 ----- =3
OFFICE	160 SF / 100 ----- =2
BREAK ROOM, REST ROOM ETC	862 SF / N/A ----- = N/A
TOTAL PARKING REQUIRED-----	= 53
TOTAL PARKING PROVIDED-----	= 53
ACCESSIBLE PARKING SPACES REQUIRED	=2
ACCESSIBLE PARKING SPACES PROVIDED	=3
VAN ACCESSIBLE SPACE	=1
TOTAL ACCESSIBLE PARKING SPACES	=3

STATE OF NEW MEXICO  
TAFAZZUL HUSSAIN  
NO. 3071  
REGISTERED ARCHITECT

SITE PLAN

Afra Construction & Design  
2501 Yale Blvd SE, Suite 102  
Albuquerque, New Mexico 87106  
Tel 505.242-1745  
Fax 505.242-1737

RECEIVED  
APR 19 2018  
LAND DEVELOPMENT SECTION

M.J HOSPITALITY  
Extra Space Storage  
Albuquerque , New Mexico

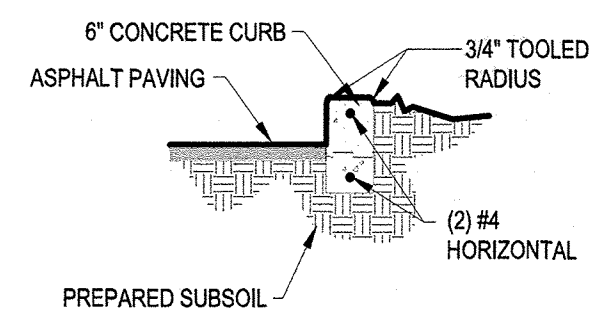
YALE BLVD. N.E.

SITE PLAN

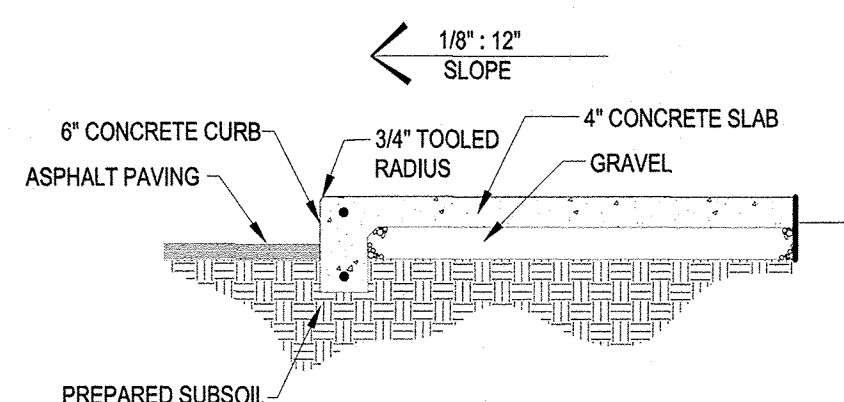
SCALE 1" = 30'-0"

SP-1

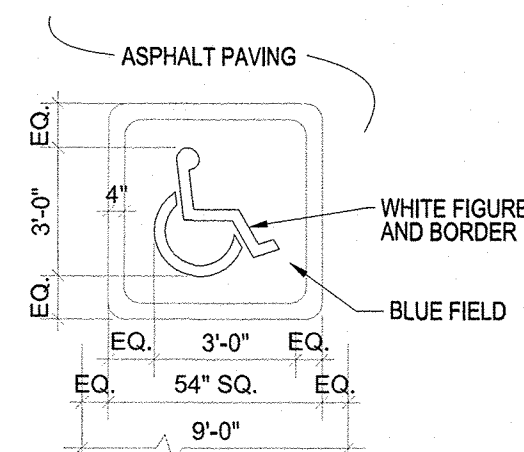
04/18/2018



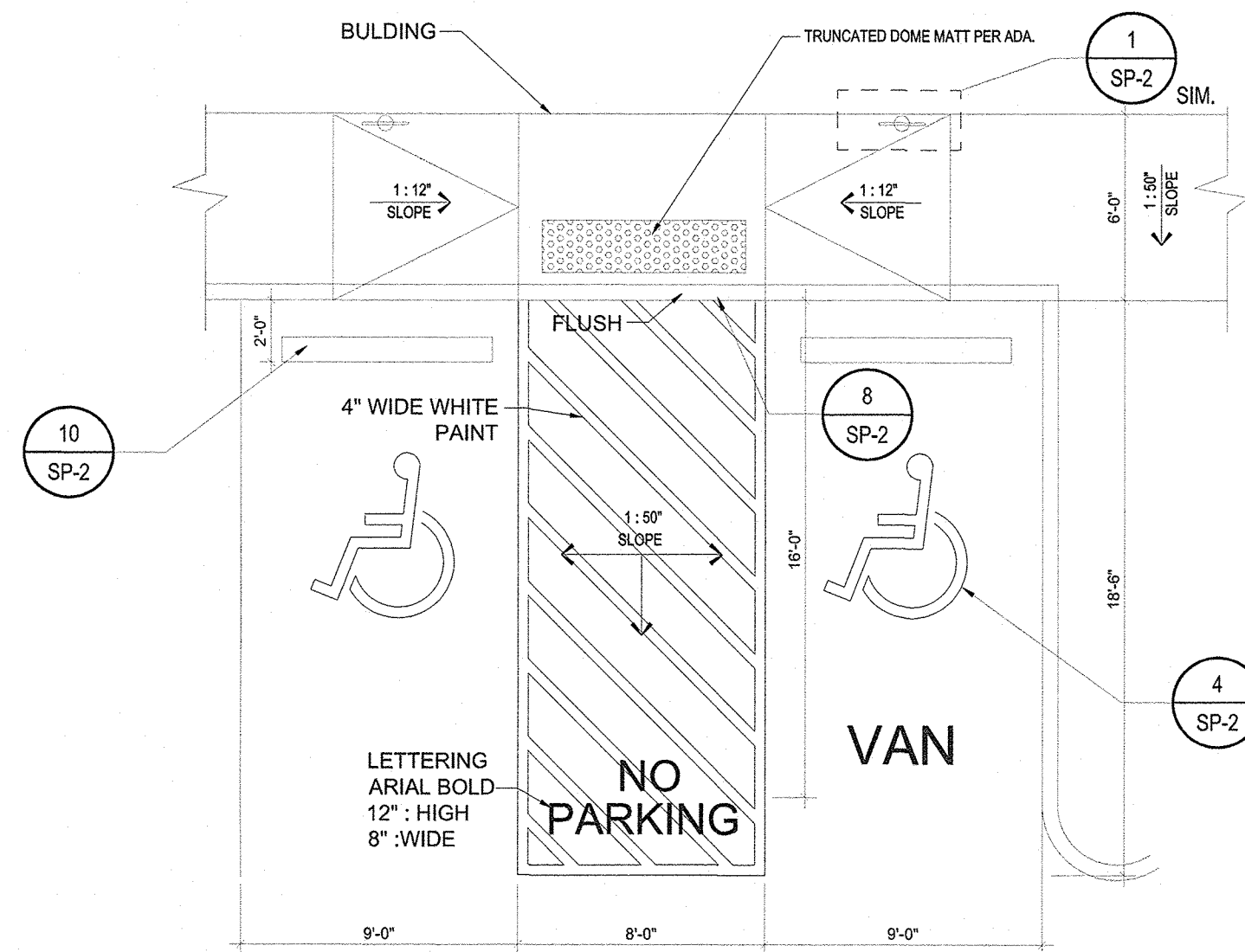
5 LANDSCAPE CURB DETAIL  
SP-2 SCALE: 1/2"=1'-0"



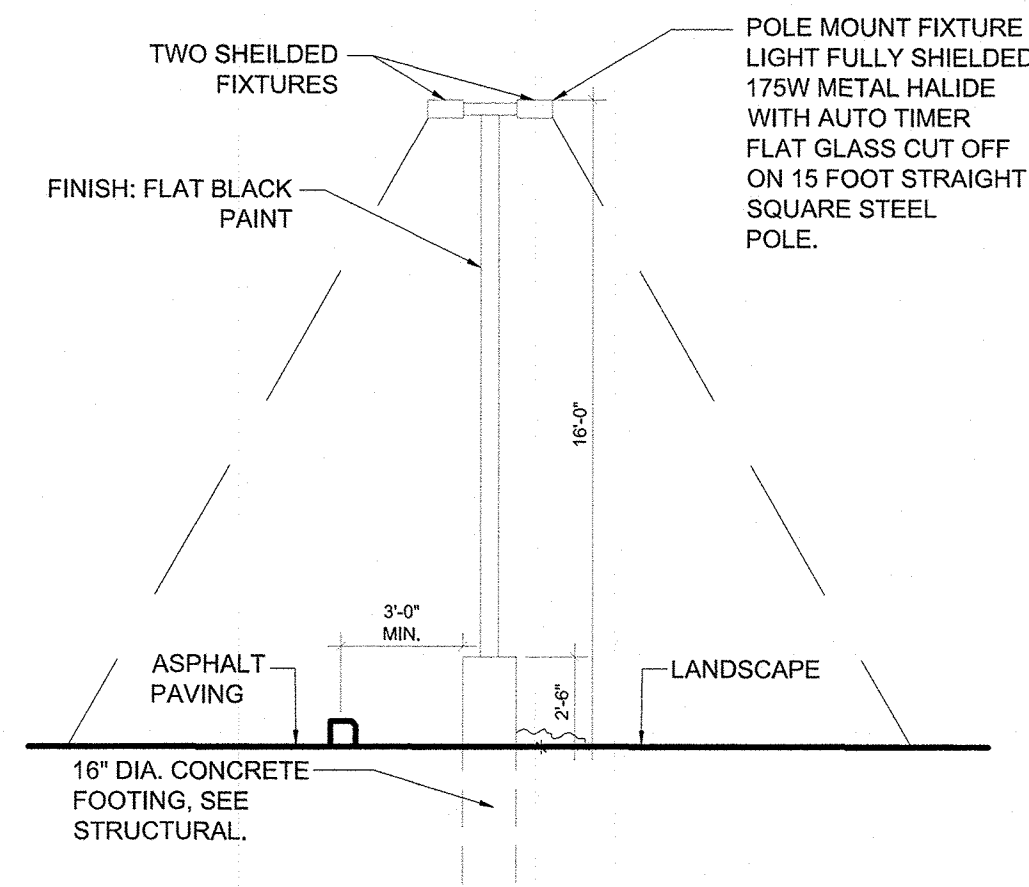
6 CONCRETE SIDE WALK CURB  
SP-2 SCALE: 1/2"=1'-0"



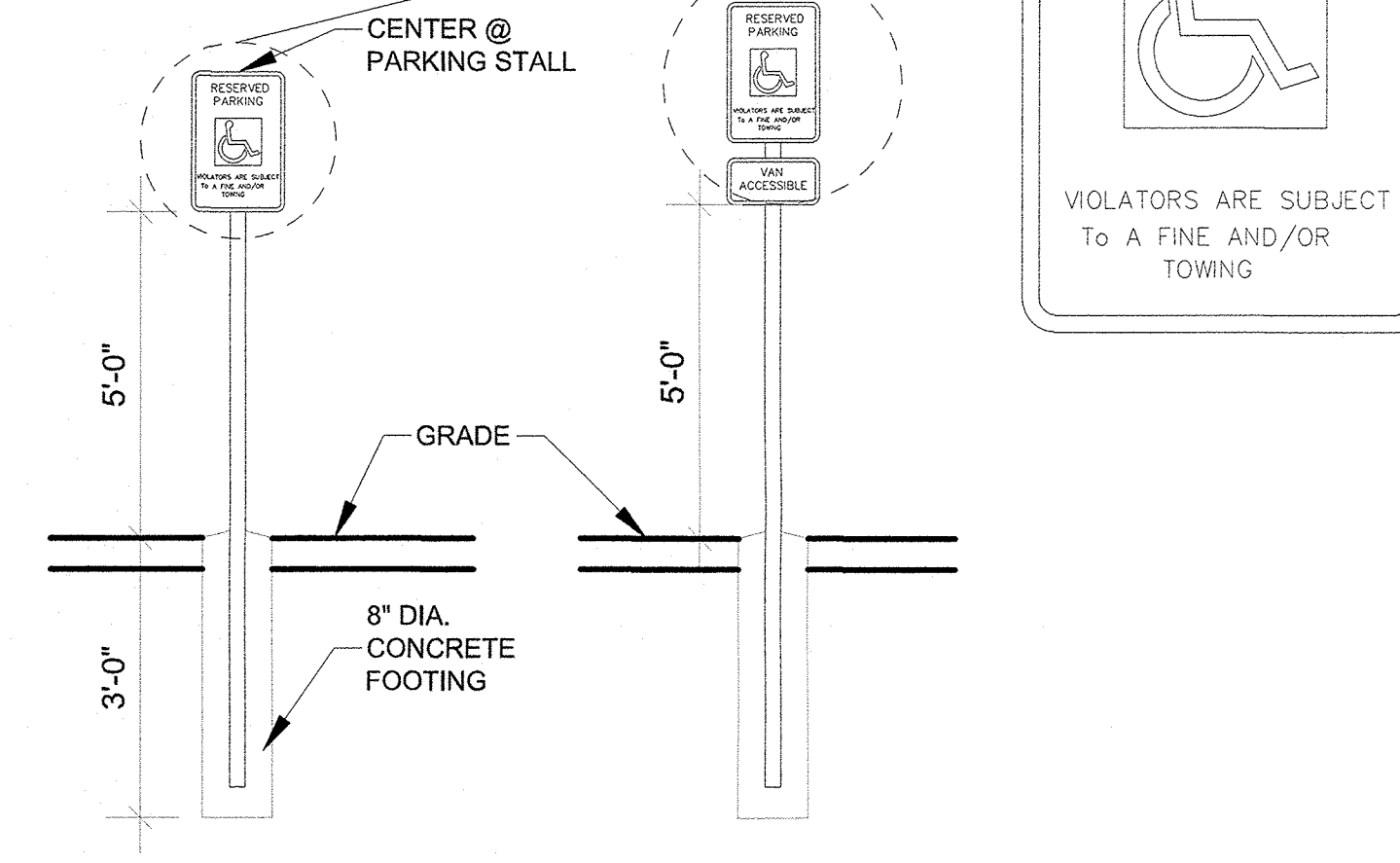
4 ACCESSIBLE PAVING SIGN  
SP-2 SCALE: 1/4"=1'-0"



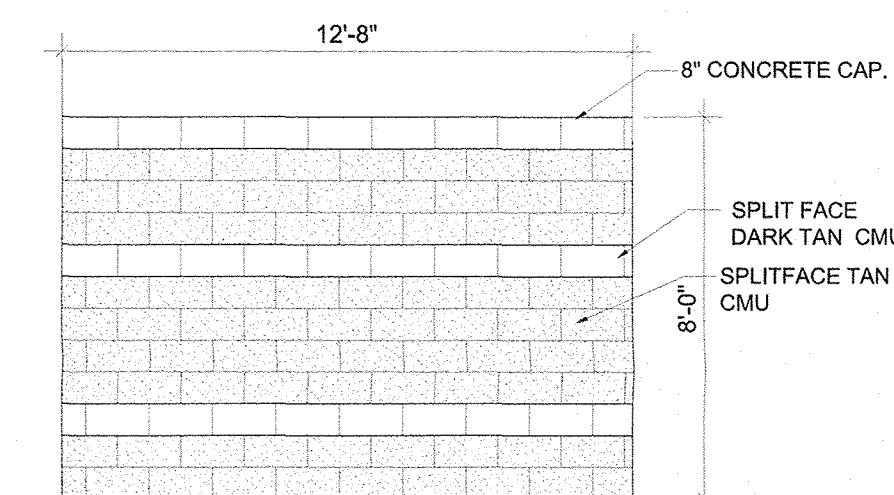
3 ACCESSIBLE PARKING SPACES  
SP-2 SCALE: 3/16"=1'-0"



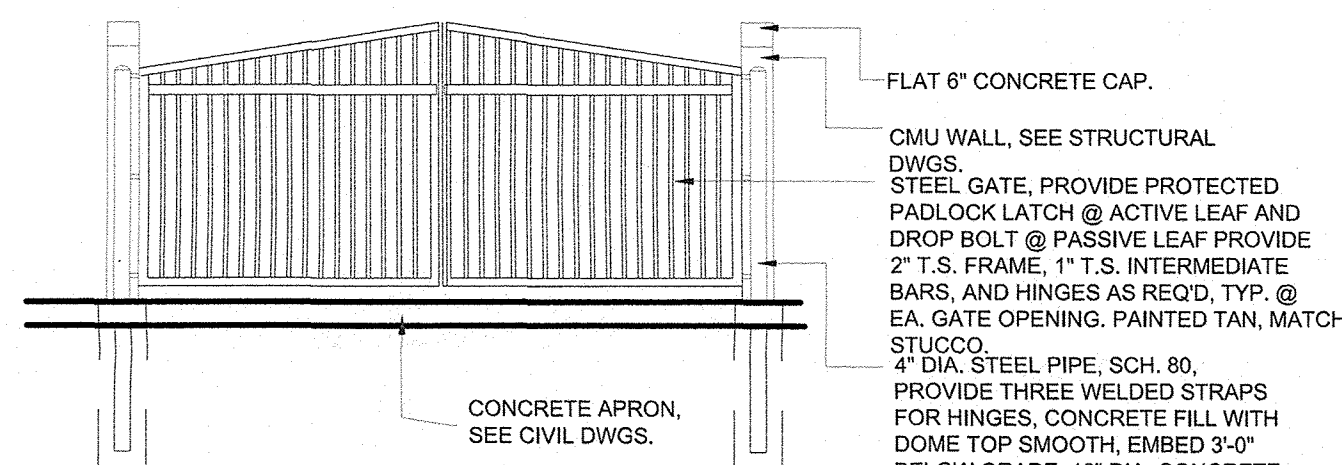
2 SHIELDED LIGHT POLE  
SP-2 SCALE: 3/16"=1'-0"



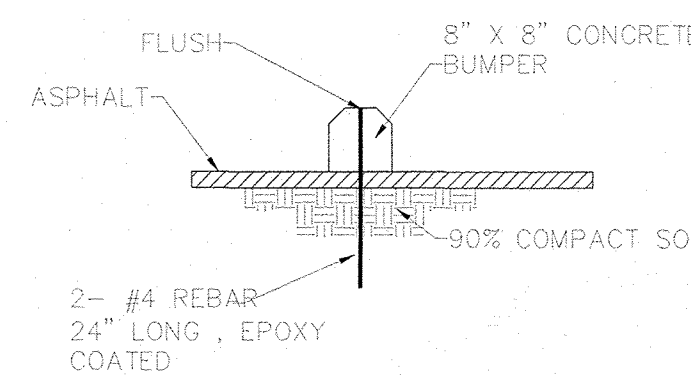
1 ACCESSIBLE PARKING SIGN  
SP-2 SCALE: 1/2"=1'-0"



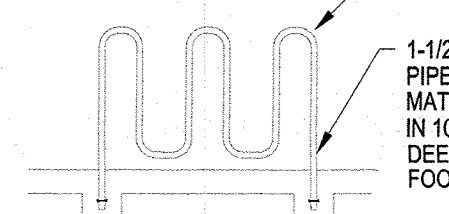
12 TYPICAL SIDE ELEVATION AT TRASH ENCLOSURE  
SP-2 SCALE: 1/4"=1'-0"



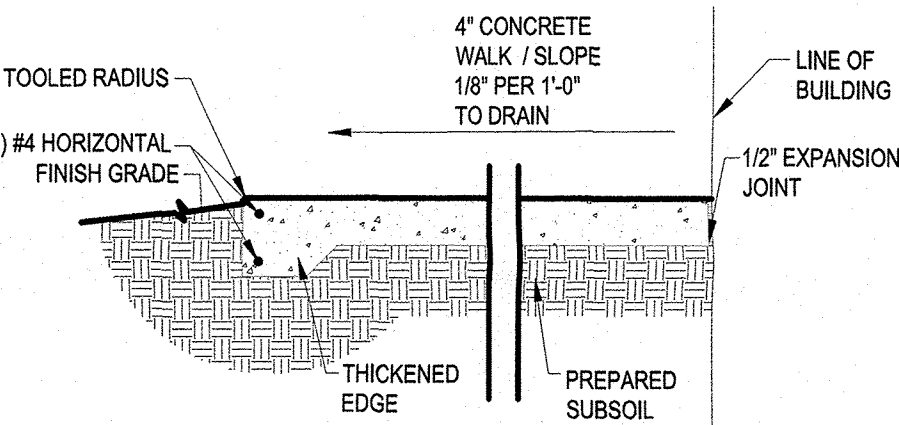
11 TRASH ELEVATION  
SP-2 SCALE: 1/4"=1'-0"



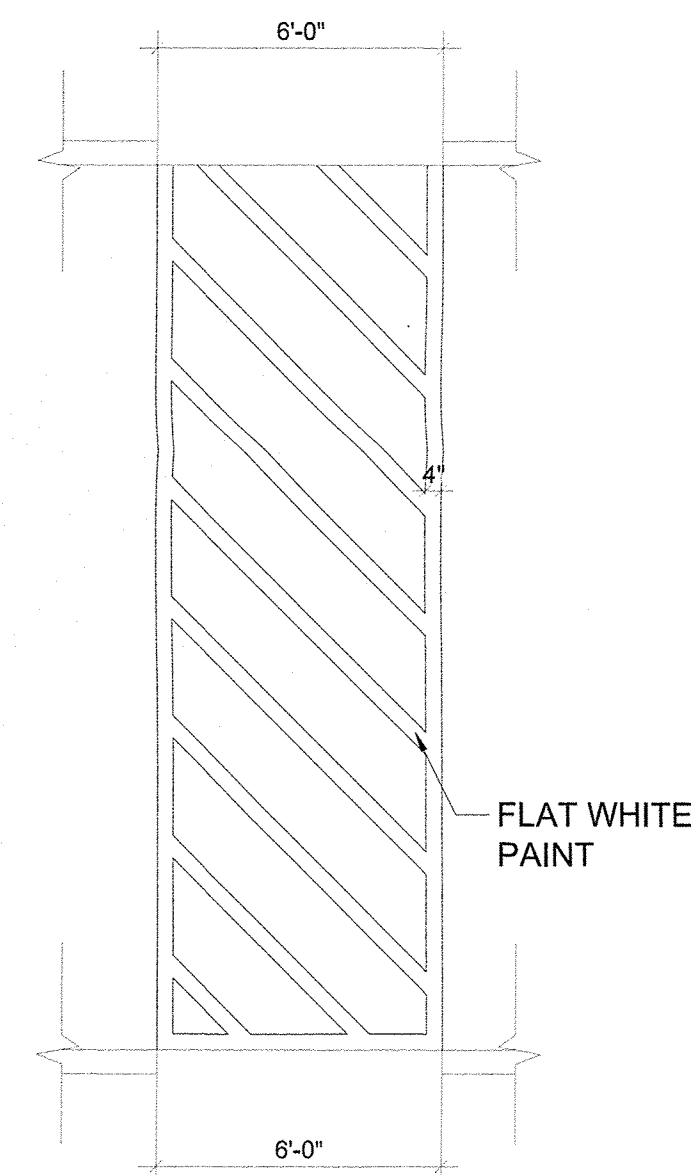
10 PARKING BUMPER  
SP-2 SCALE: 1/2"=1'-0"



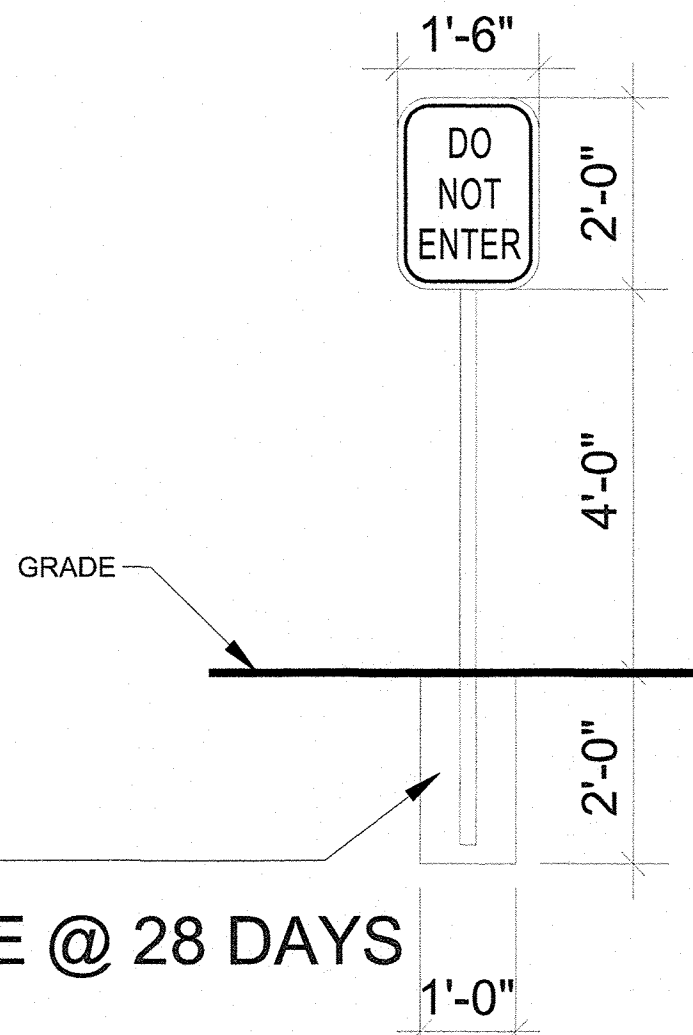
9 BIKE RACK DETAIL  
SP-2 SCALE: 1/4"=1'-0"



8 FLUSH SIDEWALK AT ACCESSIBLE  
SP-2 SCALE: 1/2"=1'-0"

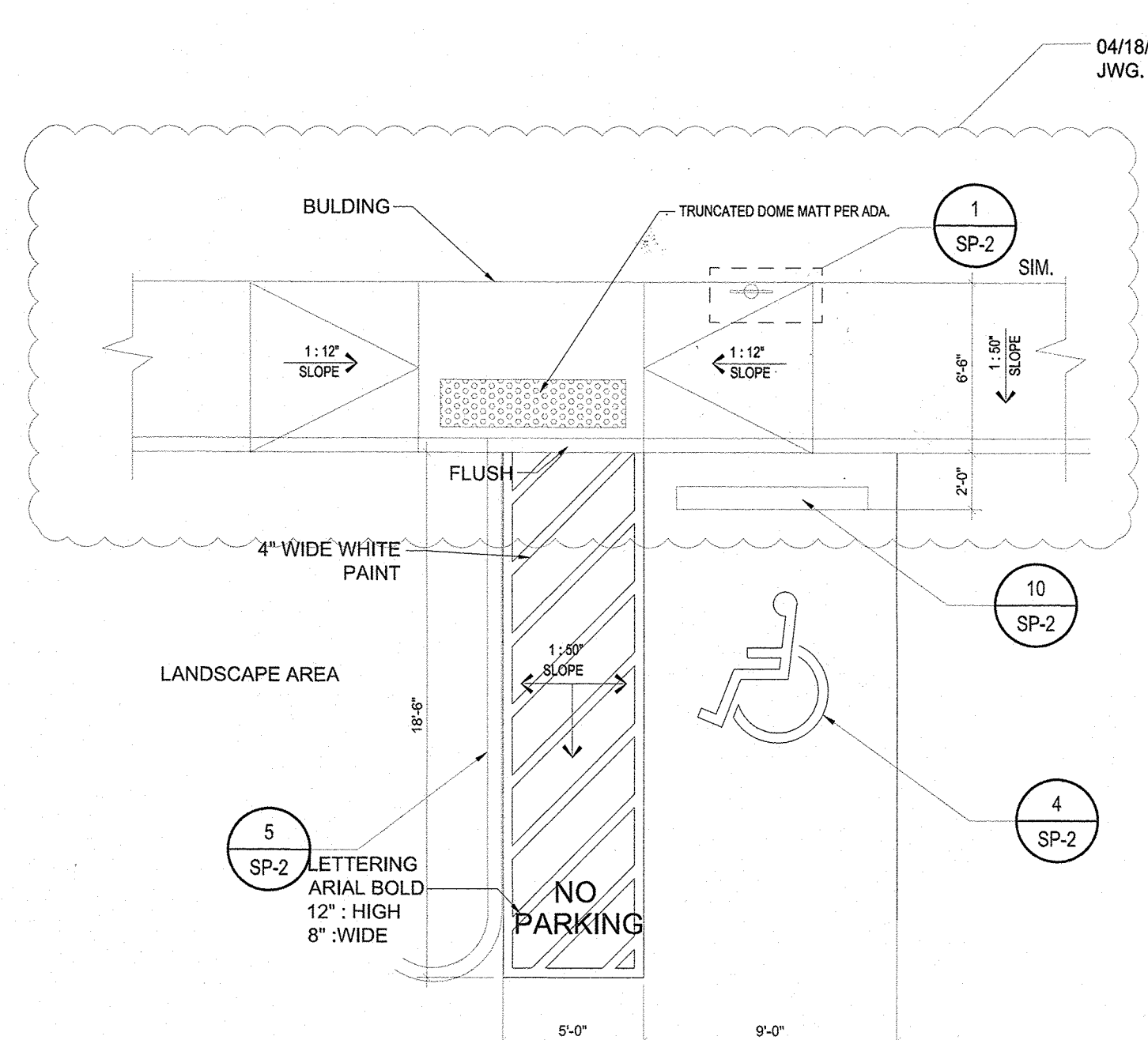


7 PEDESTRIAN PATHWAY  
SP-2 SCALE: 1/2"=1'-0"

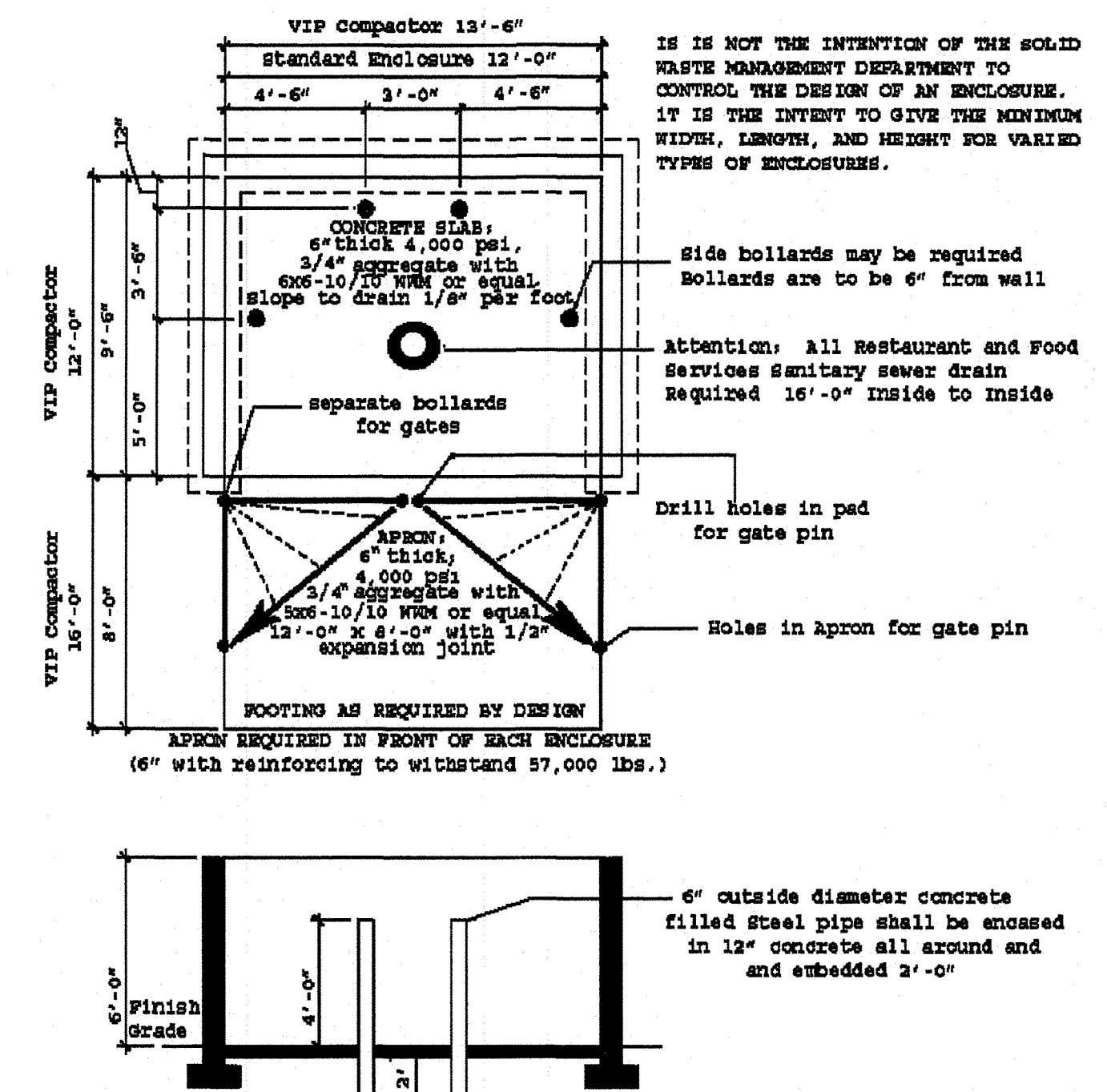


3000 PSI  
CONCRETE @ 28 DAYS

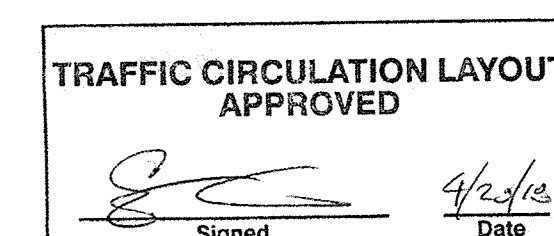
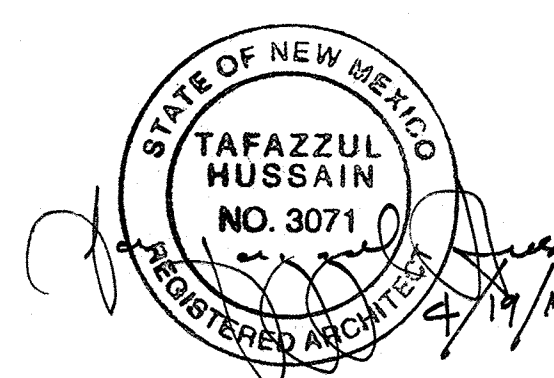
15 DO NOT ENTER SIGN  
SP-2 SCALE: 1/2"=1'-0"



14 ACCESSIBLE PARKING SPACES  
SP-2 SCALE: 3/16"=1'-0"



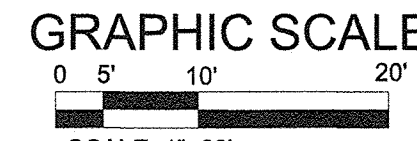
13 TRASH ENCLOSURE  
SP-2 SCALE: N.T.S.



SITE DETAILS

Afra Construction & Design  
2501 Yale Blvd SE Suite 102  
Albuquerque, New Mexico 87106  
Tel 505.242-1745  
Fax 505.242-1737

RECEIVED  
APR 19 2018  
LAND DEVELOPMENT SECTION  
M.J. HOSPITALITY  
Extra Space Storage  
Albuquerque, New Mexico



SP-2

04/18/2018