

#### SEQUENCE OF CONSTRUCTION:

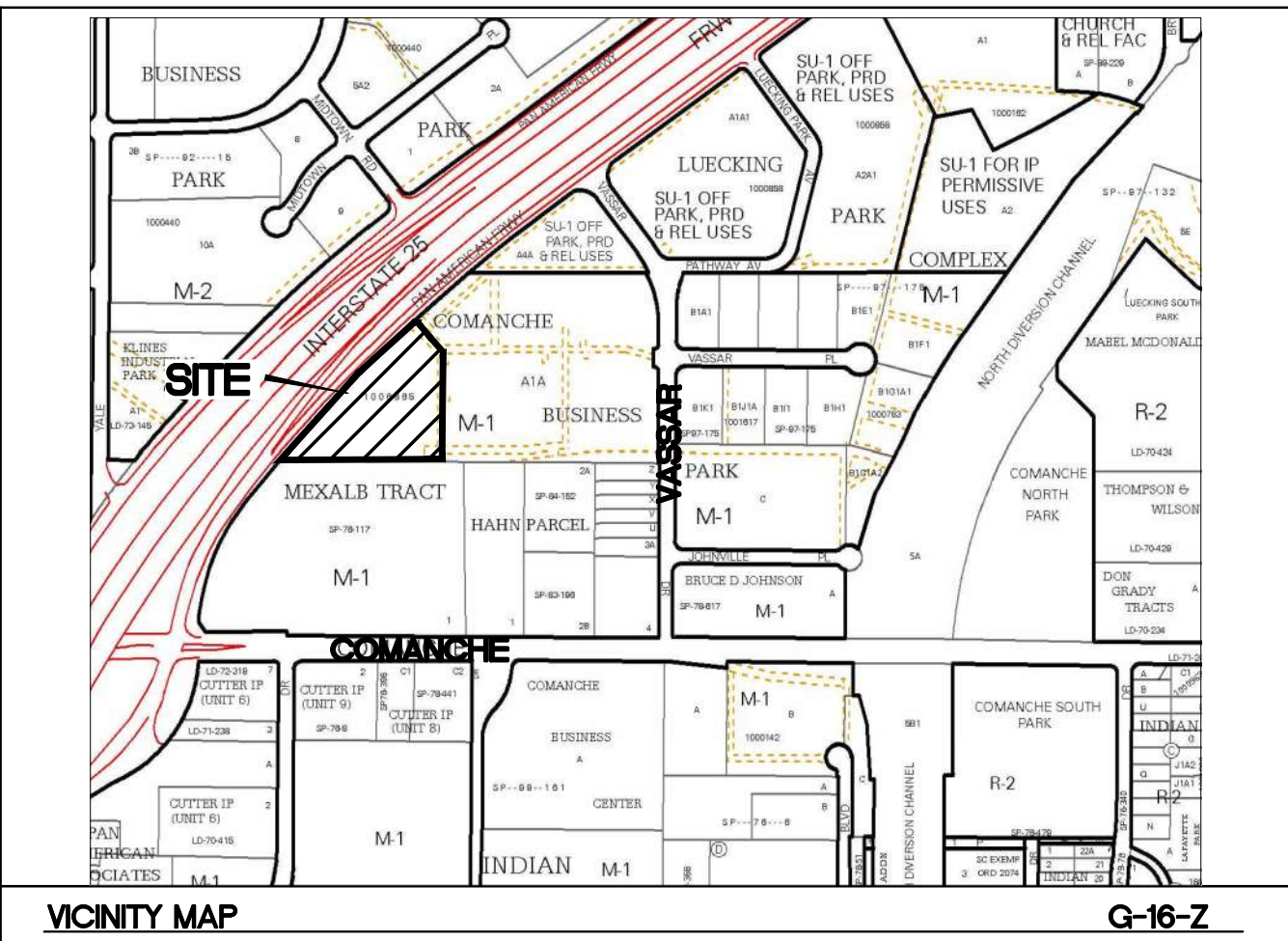
1. ESTABLISH STABILIZED CONSTRUCTION ENTRANCE/EXIT
2. POST PUBLIC SWPPP NOTICE PER DETAIL
3. INSTALL PERIMETER SILT FENCING AND OFFSITE INLET PROTECTION
4. CONTACT SWPPP COMPLIANCE INSPECTOR FOR APPROVAL OF BMP'S
5. CONSTRUCT TEMPORARY SEDIMENT BASIN, PROVIDE POSITIVE DRAINAGE TOWARDS TEMPORARY SEDIMENT BASIN FOR DURATION OF PROJECT
6. BEGIN GRUBBING AND MASS GRADING
7. BEGIN UNDERGROUND STORM DRAINAGE AND UTILITIES INFRASTRUCTURE
8. INSTALL ONSITE INLET PROTECTION AS INLETS ARE CONSTRUCTED. (INLET PROTECTION MAY BE REQUIRED TO CHANGE BMP'S AS SITE PROGRESS DICTATES)
9. INSTALL ONSITE ROADWAY PAVING
10. REMOVE SEDIMENT TRAP AND PLACE ADDITIONAL SILT FENCE TO KEEP SEDIMENT OUT OF THE ONSITE ROADWAY PAVING
11. PROVIDE TEMPORARY/PERMANENT STABILIZATION MEASURES AS AREAS ARE COMPLETED OR LEFT INACTIVE FOR 14 DAYS
12. CONTACT SWPPP COMPLIANCE INSPECTOR OF APPROVAL TO FILE NOTICE OF TERMINATION (NOT).

#### GENERAL EROSION NOTES:

- A. THE STORMWATER POLLUTION PREVENTION PLAN (SWPPP) IS COMPRISED OF THE SWPPP BOOK, THE 2017 GENERAL CONSTRUCTION PERMIT, THIS DRAWING ("TEMPORARY EROSION CONTROL AND SEDIMENTATION PLAN"), STANDARD DETAILS ("TEMPORARY EROSION CONTROL DETAILS"), EPA NOTICE OF INTENT PERMIT AND ALL SUBSEQUENT REPORTS, CORRECTIVE ACTIONS AND EROSION CONTROL RELATED DOCUMENTS.
- B. ALL OPERATORS AS DESIGNATED, CONTRACTORS AND SUBCONTRACTORS INVOLVED WITH SITE ACTIVITIES RELATED TO STORM WATER POLLUTION PREVENTION SHALL REVIEW A COPY OF THE STORM WATER POLLUTION PREVENTION PLAN (SWPPP), THE 2017 CONSTRUCTION GENERAL PERMIT, THE NATIONAL POLLUTANT DISCHARGE ELIMINATION SYSTEM (NPDES), THE CLEAN WATER ACT OF 1972 AND BECOME FAMILIAR WITH THEIR CONTENTS.
- C. THE OPERATOR IN CONTROL OF DAILY SITE ACTIVITIES SHALL IMPLEMENT BEST MANAGEMENT PRACTICES AS REQUIRED BY THE SWPPP. ADDITIONAL BEST MANAGEMENT PRACTICES SHALL BE IMPLEMENTED AS DICTATED BY CONDITIONS THAT MAY OCCUR AT NO ADDITIONAL COST TO PROJECT OWNER THROUGHOUT ALL PHASES OF CONSTRUCTION.
- D. BEST MANAGEMENT PRACTICES (BMP'S) AND CONTROLS SHALL CONFORM TO ALL FEDERAL, STATE, OR LOCAL REQUIREMENTS OR MANUAL OF PRACTICE, AS APPLICABLE. OPERATOR WITH CONTROL OF DAILY SITE ACTIVITIES SHALL IMPLEMENT ADDITIONAL CONTROLS AS DIRECTED BY PERMITTING AGENCY, LOCAL JURISDICTIONAL AUTHORITY OR SWPPP COMPLIANCE INSPECTOR.
- E. THE TEMPORARY EROSION CONTROL AND SEDIMENTATION PLAN IS A WORKING DOCUMENT AND IS REQUIRED TO BE UPDATED WITHIN 24 HOURS OF ANY CHANGES WHEN BMP'S ARE REPAIRED, RELOCATED OR REMOVED BY NOTING ON THE PLAN THE AREAS AND DATES OF THE REPAIRS, RELOCATIONS OR REMOVALS. AN ACTIVE COPY OF THE PLAN SHALL BE POSTED IN THE JOB SITE TRAILER ONSITE AND MUST BE MAINTAINED CURRENT AT ALL TIMES.
- F. CONTRACTOR SHALL MINIMIZE CLEARING AND EARTH DISTURBANCE TO THE MAXIMUM ACREAGE AS REQUIRED BY THE EPA CONSTRUCTION GENERAL PERMIT.
- G. CONTRACTOR SHALL DENOTE ON THIS PLAN, THE LOCATION OF TEMPORARY PARKING, STORAGE, PORTABLE SANITARY FACILITIES, OFFICE TRAILERS, AND ALL SUPPORT AREAS. RELOCATIONS OF EACH SHALL ALSO BE DOCUMENTED AS THEY OCCUR.
- H. ALL WASH OUT WATER USED FOR CONCRETE, MASONRY, PAINT AND OTHER MATERIALS SHALL HAVE ADEQUATE SIGNAGE WITH PROPER CONTAINMENT AND BE DISPOSED OF PROPERLY WHEN CAPACITY REACHES 50% OR PER VENDOR RECOMMENDATIONS. VENDORS AND TRADESMEN SHALL BE INFORMED OF THE REQUIREMENTS TO USE THE WASH OUT.
- I. A SPILL KIT SHALL BE READILY AVAILABLE TO CONTAIN AND CLEAN-UP FUEL OR CHEMICAL SPILLS AND LEAKS. A DISCHARGE OF ANY MATERIAL IN A QUANTITY THAT MAY WITHIN REASONABLE PROBABILITY CAUSE, INJURE OR BE DETRIMENTAL TO HUMAN HEALTH, ANIMAL OR PLANT LIFE, OR PROPERTY; OR INTERFERE WITH THE PUBLIC WELFARE MUST BE REPORTED TO THE NEW MEXICO ENVIRONMENTAL DEPARTMENT HOTLINE AT (505) 827-9329 FOR EMERGENCIES OR FOR NON EMERGENCIES (800)-426-8535. IF UNSURE IF THE SPILL IS OF A SIGNIFICANT QUANTITY, THE SPILL SHOULD BE REPORTED TO THE HOTLINE AND INFORMATION PROVIDED WITH DETAILS OF THE SPILL FOR FURTHER ACTIONS.
- J. DUST DURING CONSTRUCTION OPERATIONS SHALL BE FREQUENTLY CONTROLLED BY WATER SUPPRESSION METHODS ONLY. EARTH DISTURBING OPERATIONS SHALL CEASE IF HIGH WINDS ABOVE 35 MPH ARE PRESENT. THE USE OF MOTOR OILS AND OTHER PETROLEUM BASED OR TOXIC LIQUIDS IS STRICTLY PROHIBITED. OTHER CHEMICALS USED FOR DUST SUPPRESSION MUST BE APPROVED BY THE EPA PRIOR TO THEIR USE.
- K. RUBBISH, TRASH, GARBAGE, LITTER, OR OTHER SUCH MATERIALS SHALL BE DEPOSITED INTO SEALED, COVERED, LEAK PROOF CONTAINERS. CONTAINERS SHALL BE DISPOSED OF PROPERLY WHEN CAPACITY IS REACHED. MATERIALS SHALL BE PREVENTED FROM LEAVING THE PREMISES THROUGH THE ACTION OF WIND OR STORMWATER.
- L. ALL STORM WATER POLLUTION PREVENTION MEASURES AND CONTROLS PRESENTED ON THIS PLAN, AND IN THE STORM WATER POLLUTION PREVENTION PLAN, SHALL BE INITIATED PER THE SEQUENCE OF CONSTRUCTION AS NOTED.
- M. DISTURBED PORTIONS OF THE SITE WHERE CONSTRUCTION ACTIVITY HAS BEEN TEMPORARILY SUSPENDED FOR 14 DAYS, SHALL HAVE TEMPORARILY STABILIZATION IN PLACE NO LATER THAN 14 DAYS FROM THE LAST DATE OF CONSTRUCTION ACTIVITY OCCURRING THESE AREAS.
- N. DISTURBED PORTIONS OF THE SITE WHERE CONSTRUCTION ACTIVITY HAS PERMANENTLY STOPPED SHALL HAVE PERMANENT CONTROLS IN PLACE NO LATER THAN 14 DAYS AFTER THE LAST CONSTRUCTION ACTIVITY OCCURRING IN THESE AREAS.
- O. IF THE ACTION OF VEHICLES OR EQUIPMENTS TRAVELING OVER THE CONSTRUCTION ENTRANCES IS NOT SUFFICIENT TO REMOVE THE MAJORITY OF DIRT OR MUD FROM LEAVING THE SITE, THEN THE LENGTH OF THE EXIT SHOULD BE EXTENDED TO PROVIDE ADDITIONAL TIRE ROTATIONS, LARGER ROCK MAY BE USED TO CREATE A SUFFICIENT JARRING MOTION OR INSTALL A TIRE WASH OFF WITH A SEDIMENT TRAP BEFORE LEAVING THE SITE.
- P. ALL MATERIALS SPILLED, DROPPED, WASHED, OR TRACKED FROM VEHICLES ONTO ROADWAYS OR INTO STORM DRAINS MUST BE REMOVED IMMEDIATELY.
- Q. THE OPERATOR IN CHARGE OF THE DAILY SITES ACTIVITIES WILL BE RESPONSIBLE FOR REMOVING SEDIMENT OR SOILS ACCUMULATING MORE THAN 50% OF THE DESIGN CAPACITY IN DETENTION PONDS, SILT FENCING OR OTHER SIMILAR EROSION CONTROLS.
- R. ON-SITE & OFFSITE SOIL STOCKPILE AND BORROW AREAS SHALL BE PROTECTED FROM EROSION AND SEDIMENTATION THROUGH IMPLEMENTATION OF BEST MANAGEMENT PRACTICES, AS REQUIRED PER THE CONSTRUCTION GENERAL PERMIT. STOCKPILE AND BORROW AREA LOCATIONS SHALL BE NOTED ON THE ESC PLAN AND PERMITTED IN ACCORDANCE WITH LOCAL AUTHORITIES HAVING JURISDICTIONAL CONTROL.
- S. SLOPES SHALL BE LEFT WITH CROSS SLOPE GRADING PATTERN AND IN A ROUGHENED CONDITION DURING THE GRADING PHASE TO REDUCE RUNOFF VELOCITIES AND EROSION RILLS. EXCESSIVE SLOPES MAY REQUIRE ADDITIONAL INDUSTRY STANDARD CONTROLS TO PREVENT EROSION.
- T. DUE TO THE GRADE CHANGES DURING THE DEVELOPMENT OF THE PROJECT, THE OPERATOR IN CONTROL OF THE SITES DAILY ACTIVITIES SHALL BE RESPONSIBLE FOR ADJUSTING AND MAINTAINING ALL EROSION CONTROL TO PREVENT EROSION.
- U. ALL DISTURBED AREAS SHALL BE SUPPRESSED BY WATER AND ALL CONTROLS LEFT IN GOOD WORKING CONDITION AT THE END OF EACH WORKDAY. THIS INCLUDES REPLACEMENT OF SILT FENCING AND/OR OTHER EROSION CONTROL CONTROLS, TRACK OUT SWEEP CLEAN, BACKFILL OF OPEN TRENCHES AND ANY OTHER EROSION CONTROLS.

#### ESC PLAN STANDARD NOTES:

1. ALL EROSION AND SEDIMENT CONTROL (ESC WORK) ON THESE PLANS, EXCEPT AS OTHERWISE STATED OR PROVIDED HEREON SHALL BE PERMITTED, CONSTRUCTED, INSTALLED, AND MAINTAINED IN ACCORDANCE WITH:
  - a. THE CITY ORDINANCE § 14-5-2-11, THE ESC ORDINANCE,
  - b. THE EPA'S 2017 CONSTRUCTION GENERAL PERMIT (CGP), AND
  - c. THE CITY OF ALBUQUERQUE CONSTRUCTION BMP MANUAL.
2. ALL BMP'S MUST BE INSTALLED PRIOR TO BEGINNING ANY EARTH MOVING ACTIVITIES EXCEPT AS SPECIFIED HEREON IN THE PHASING PLAN. CONSTRUCTION OF EARTHEN BMP'S SUCH AS SEDIMENT TRAPS, SEDIMENT BASINS, AND DIVERSION BERMS SHALL BE COMPLETED AND INSPECTED PRIOR TO ANY OTHER CONSTRUCTION OR EARTHWORK. SELF-INSPECTION IS REQUIRED AFTER INSTALLATION OF THE BMP'S AND PRIOR TO BEGINNING CONSTRUCTION.
3. SELF-INSPECTIONS - AT A MINIMUM A ROUTINE COMPLIANCE SELF-INSPECTION IS REQUIRED TO REVIEW THE PROJECT FOR COMPLIANCE WITH THE CONSTRUCTION GENERAL PERMIT ONCE EVERY 14 DAYS AND AFTER ANY PRECIPITATION EVENT OF ½ INCH OR GREATER UNTIL THE SITE CONSTRUCTION HAS BEEN COMPLETED AND THE SITE DETERMINED AS STABILIZED BY THE CITY. REPORTS OF THESE INSPECTIONS SHALL BE KEPT BY THE PERSON OR ENTITY AUTHORIZED TO DIRECT THE CONSTRUCTION ACTIVITIES ON THE SITE AND MADE AVAILABLE UPON REQUEST.
4. CORRECTIVE ACTION REPORTS MUST BE KEPT BY THE PERSON OR ENTITY AUTHORIZED TO DIRECT THE CONSTRUCTION ACTIVITIES ON THE SITE AND MADE AVAILABLE UPON REQUEST.
5. STABILIZATION REPORTS MUST BE KEPT BY THE PERSON OR ENTITY AUTHORIZED TO DIRECT THE CONSTRUCTION ACTIVITIES ON THE SITE AND MADE AVAILABLE UPON REQUEST. REPORTS SHOULD INCLUDE RECORDS OF WEED REMOVAL PER CITY ORDINANCE (§ 9-8-1), STERILIZATION, SOIL TEST RESULTS AND RECOMMENDATION, MATERIALS AND MANUFACTURER'S SPECIFICATIONS FOR APPLICATION RATES, ESTIMATED FUNCTIONAL LONGEVITY, METHODS OF APPLICATION, INSPECTION AND MAINTENANCE. THE REDUCED SELF-INSPECTION SCHEDULE IN CGP 4.4.1 APPLIES TO STABILIZED AREA AND ANY DAMAGED OR WORK STABILIZATION MUST BE IDENTIFIED IN THE REPORTS ALONG WITH WEED PROBLEMS. CORRECTIVE ACTIONS FOR STABILIZATION SHALL BE DOCUMENTED IN A STABILIZATION REPORT INCLUDING ACTUAL RATES AND DATES OF STABILIZATION, AND THE MATERIALS AND MANUFACTURER'S SPECIFICATIONS USED.
6. BMP'S SHALL BE INSPECTED AND MAINTAINED UNTIL ALL DISTURBED AREAS ARE STABILIZED IN ACCORDANCE WITH THE STABILIZATION CRITERIA (CGP 2.2.14.b). GENERALLY, ALL DISTURBED AREAS, OTHER THAN STRUCTURES AND IMPERVIOUS SURFACES, MUST HAVE UNIFORM PERENNIAL VEGETATION THAT PROVIDES 70 PERCENT OR MORE OF THE COVER PROVIDED BY NATIVE VEGETATION OR SEED THE DISTURBED AREA AND PROVIDE NON-VEGETATIVE MULCH THAT PROVIDES COVER AT LEAST THREE YEARS WITHOUT ACTIVE MAINTENANCE. FINAL STABILIZATION MUST BE APPROVED BY THE CITY OF ALBUQUERQUE PRIOR TO REMOVAL OF BMP'S AND DISCONTINUATION OF INSPECTIONS.



#### LEGEND

- BOUNDARY LINE
- RIGHT OF WAY LINE
- LIMITS OF DISTURBANCE
- XXX CONTOUR ELEVATIONS
- SF TEMPORARY SILT FENCE
- STORM DRAIN
- PROPOSED INTERNAL ROAD PAVING

#### EROSION DETAILS

- CE TEMPORARY STONE CONSTRUCTION EXIT
- ST TEMPORARY SEDIMENT TRAP W/ EMERGENCY OVERFLOW
- SS SWPPP SIGN
- W WATTLES
- IP INLET PROTECTION

#### EROSION NOTES

- TPS TEMPORARY PARKING AND STORAGE

#### GROUND COVER (PRE-CONSTRUCTION):

THE UNDISTURBED AND PRE-CONSTRUCTION GROUND COVER CONSISTS OF UNCOMPACTED SOIL WITH NATIVE GRASSES, WEEDS, AND SHRUBS WITH MINIMAL TO NO DISTURBANCES TO GRADING.

#### STORMWATER TEAM MEMBERS:

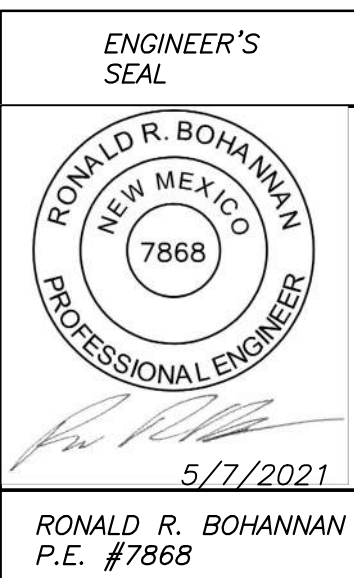
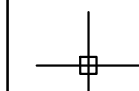
SEDIMENT REMOVAL NAME: \_\_\_\_\_  
PHONE: \_\_\_\_\_  
EMAIL: \_\_\_\_\_  
BMP MAINTENANCE NAME: \_\_\_\_\_  
PHONE: \_\_\_\_\_  
EMAIL: \_\_\_\_\_  
INSPECTIONS NAME: \_\_\_\_\_  
PHONE: \_\_\_\_\_  
EMAIL: \_\_\_\_\_

#### LIST OF OPERATORS:

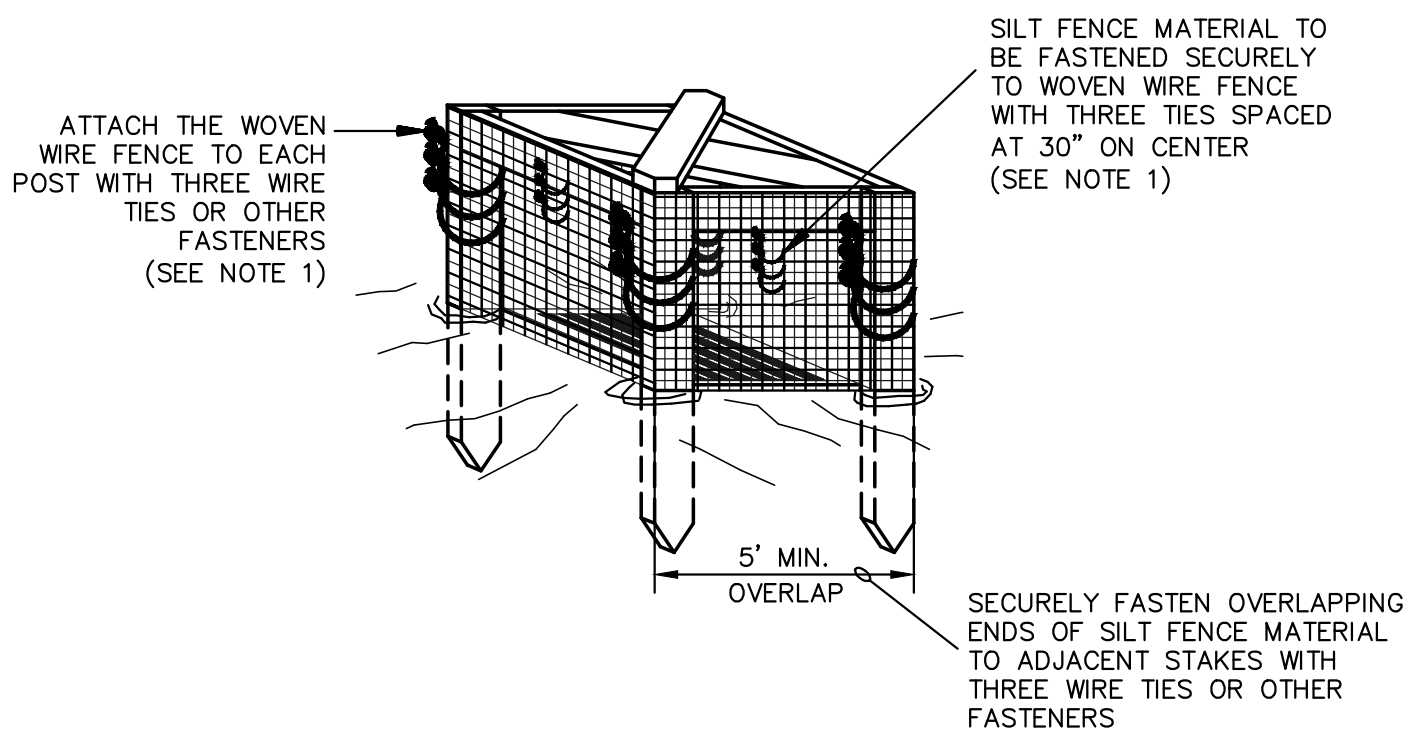
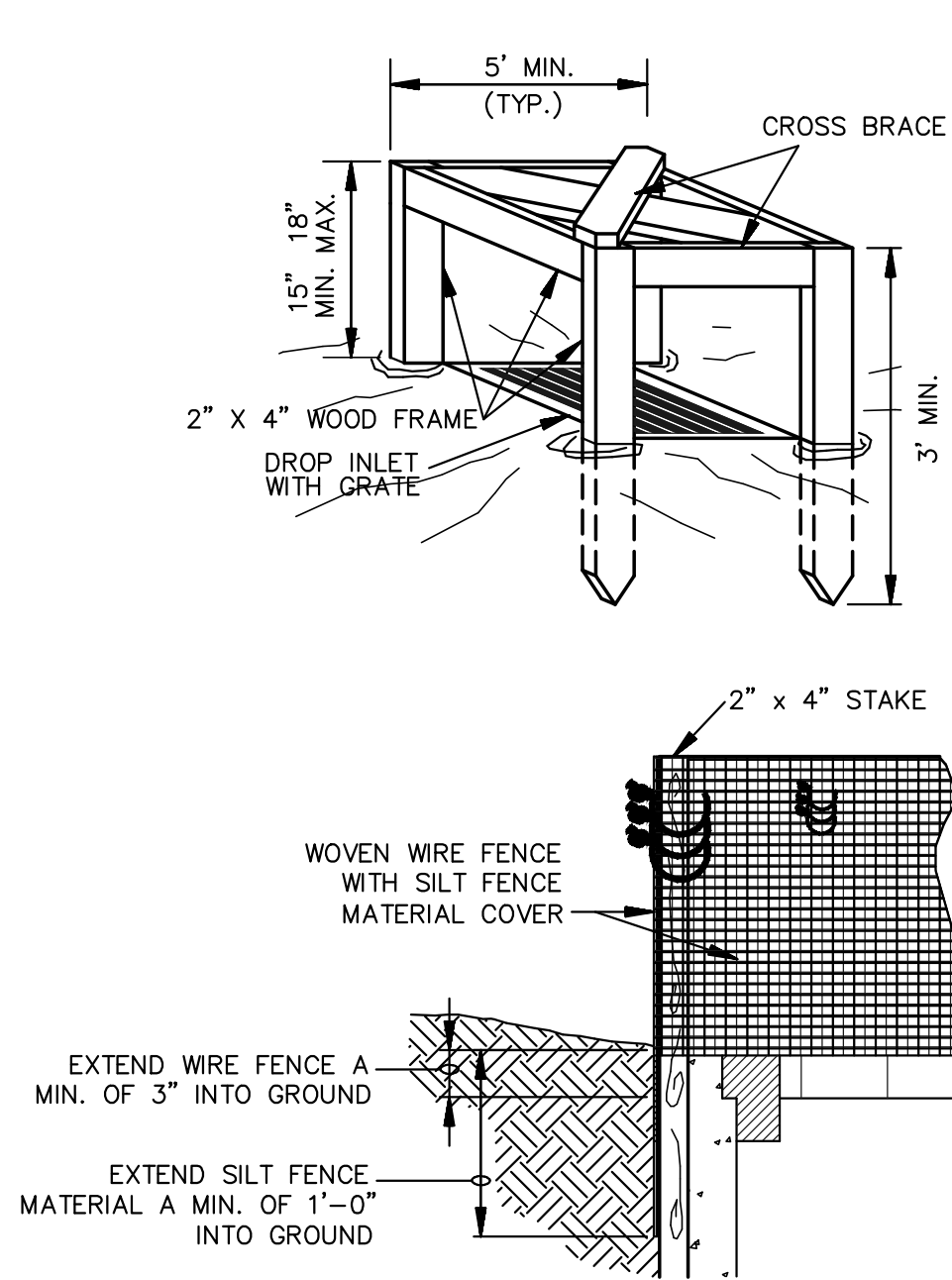
OPERATOR 1 NAME: \_\_\_\_\_  
PHONE: \_\_\_\_\_  
EMAIL: \_\_\_\_\_  
OPERATOR 2 NAME: \_\_\_\_\_  
PHONE: \_\_\_\_\_  
EMAIL: \_\_\_\_\_  
OPERATOR 3 NAME: \_\_\_\_\_  
PHONE: \_\_\_\_\_  
EMAIL: \_\_\_\_\_

#### SWPPP PURPOSE:

THE PURPOSE OF THIS SWPPP IS TO APPLY SWPPP CONTROLS THAT ARE REQUIRED DURING DEVELOPMENT OF SITE.

	<b>CARVANA</b> <b>3800 PAN AMERICAN FWY N.E.</b> <b>SWPPP</b>	DRAWN BY RMG DATE 03/11/2020 2020008-SWPPP	
	 <b>TIERRA WEST, LLC</b> 5571 MIDWAY PARK PLACE NE ALBUQUERQUE, NM 87109 (505) 858-3100 www.tierrawestllc.com	SHEET # <b>10</b> JOB # 2020008	





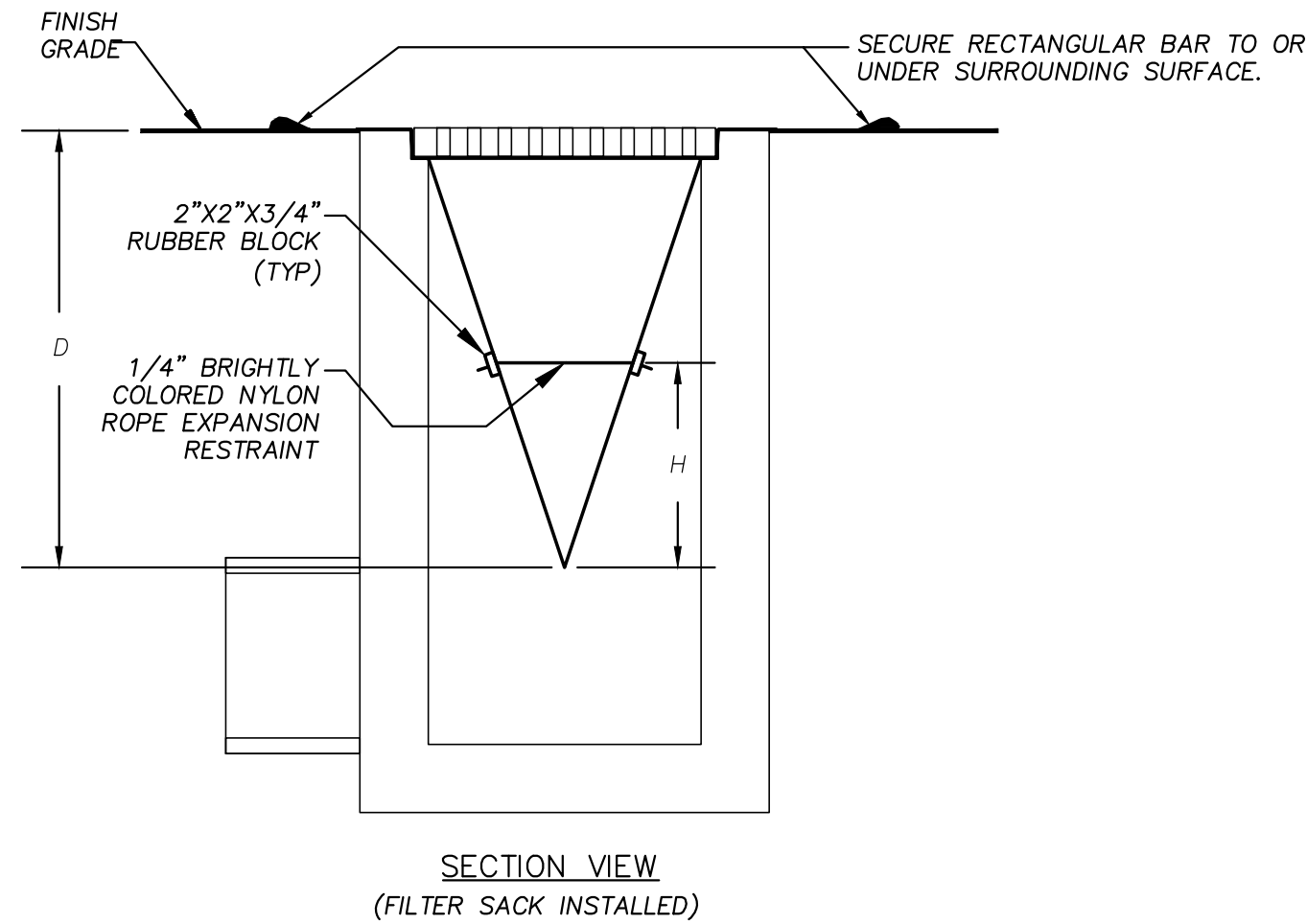
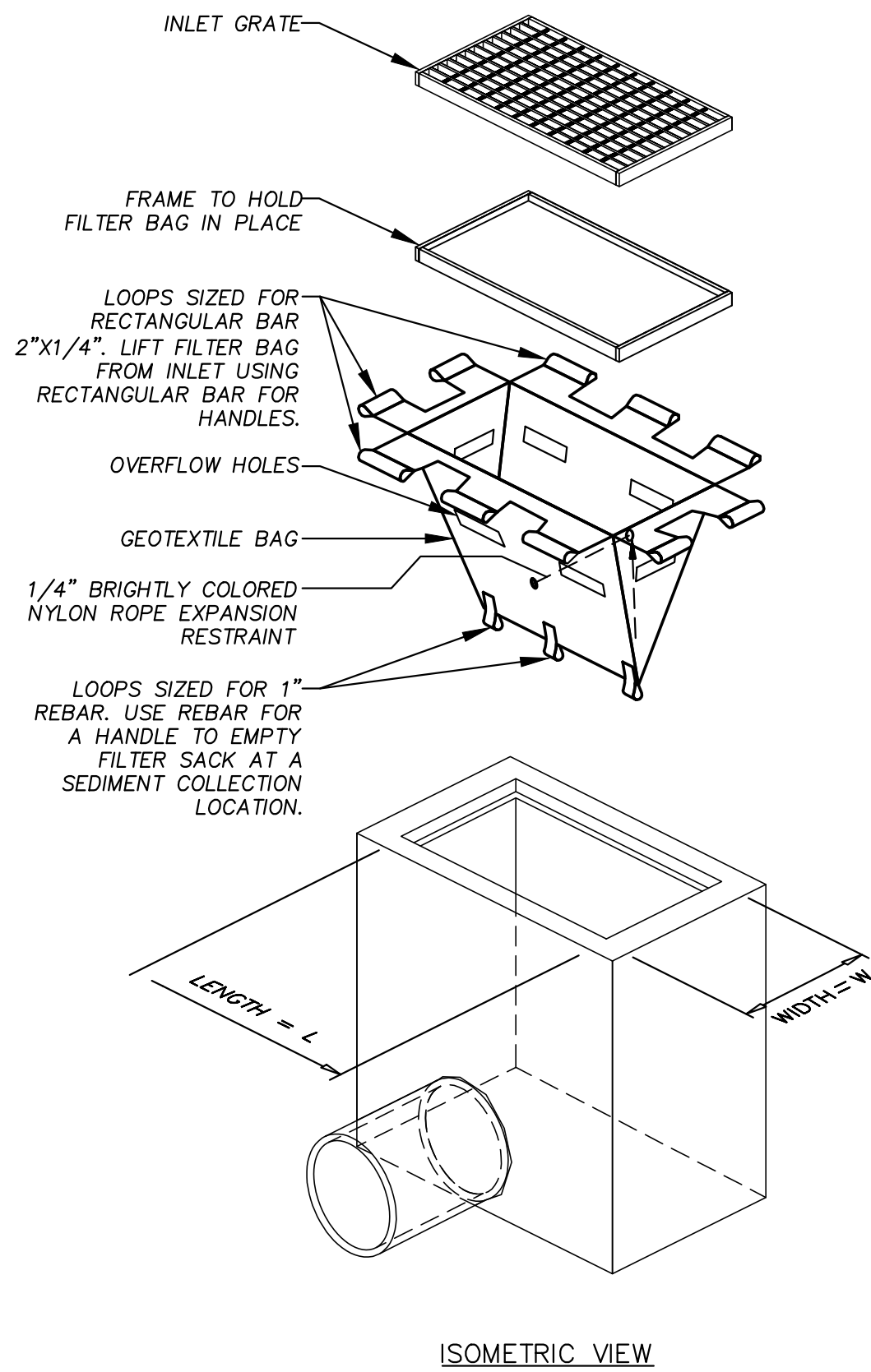
POSTS: 2 X 4 WOODEN STAKE  
FENCE: WOVEN WIRE, 14-1/2 GA., 6" MAX. MESH OPENING  
FABRIC: IN ACCORDANCE WITH ASTM D 6461 LATEST EDITION.

1. ATTACH THE WOVEN WIRE FENCE TO EACH POST AND THE GEOTEXTILE TO THE WOVEN WIRE FENCE (SPACED EVERY 30") WITH THREE WIRE TIES OR OTHER FASTENERS, ALL SPACED WITHIN THE TOP 8" OF THE FABRIC. ATTACH EACH TIE DIAGONALLY 45 DEGREES THROUGH THE FABRIC, WITH EACH PUNCTURE AT LEAST 1" VERTICALLY APART.
2. WHEN TWO SECTIONS OF SILT FENCE MATERIAL ADJOIN EACH OTHER, THEY SHALL BE OVERLAPPED ACROSS TWO POSTS.
3. MAINTENANCE SHALL BE PERFORMED AS NOTED IN THE SWPPP. DEPTH OF ACCUMULATED SEDIMENTS MAY NOT EXCEED ONE-HALF THE HEIGHT OF THE FABRIC. MAINTENANCE CLEANOUT MUST BE CONDUCTED REGULARLY TO PREVENT ACCUMULATED SEDIMENTS FROM REACHING ONE-HALF THE HEIGHT OF THE SILT FENCE MATERIAL ABOVE GRADE.
4. ALL SILT FENCE INLETS SHALL INCLUDE WIRE SUPPORT.

## SILT FENCE INLET PROTECTION

N.T.S.

IP6



- NOTES:
1. GEOTEXTILE SHALL BE A WOVEN POLYPROPYLENE FABRIC THAT MEETS OR EXCEEDS REQUIREMENTS IN THE SPECIFICATIONS TABLE.
  2. PLACE AN OIL ABSORBENT PAD OR PILLOW OVER INLET GRATE WHEN OIL SPILLS ARE A CONCERN.
  3. THE WIDTH, "W", OF THE FILTER SACK SHALL MATCH THE INSIDE WIDTH OF THE GRATED INLET BOX.
  4. THE DEPTH, "D", OF THE FILTER SACK SHALL BE BETWEEN 18 INCHES AND 36 INCHES.
  5. THE LENGTH, "L", OF THE FILTER SACK SHALL MATCH THE INSIDE LENGTH OF THE GRATED INLET BOX.

- MAINTENANCE NOTES:
1. INLET PROTECTION DEVICES MUST BE INSPECTED FOR SEDIMENT ACCUMULATION WITHIN THE CATCH BASIN. REMOVE TRAPPED SEDIMENT WHEN BRIGHTLY COLORED EXPANSION RESTRAINT CAN NO LONGER BE SEEN.
  2. REMOVAL OF SEDIMENT ACCUMULATED IN OR ADJACENT TO A STORM DRAIN INLET MUST BEGIN IMMEDIATELY UPON DISCOVERY, WITH COMPLETION OF THE ACTIVITY OCCURRING NO LATER THAN THE END OF THE FOLLOWING BUSINESS DAY.
  3. INLET PROTECTION DEVICES SHALL BE INSPECTED FOR UNINTENDED BYPASS OR IMPROPER FLOW-RATES THAT MAY CAUSE DOWNSTREAM FLOODING.
  4. CONTACT THE CEC FOR ALTERNATE INLET PROTECTION IF THE DESIGNED PROTECTION MAY IMPACT DOWNSTREAM BMPS, ADJACENT SLOPES, ETC., DUE TO PONDING ISSUES. ENSURE THAT NO UNDERMINING OF INLET PROTECTION DEVICES HAS OCCURRED.
  5. INLET PROTECTION DEVICES AND BARRIERS SHALL BE REPAIRED OR REPLACED IF THEY SHOW SIGNS OF UNDERMINING OR DETERIORATION.

LOW TO MODERATE FLOW GEOTEXTILE FABRIC SPECIFICATION TABLE		
PROPERTIES	TEST METHOD	UNITS
GRAB TENSILE STRENGTH	ASTM D-4632	300 LBS
GRAB TENSILE ELONGATION	ASTM D-4632	20 %
PUNCTURE	ASTM D-4833	120 LBS
MULLEN BURST	ASTM D-3786	800 PSI
TRAPEZOID TEAR	ASTM D-4533	120 LBS
UV RESISTANCE	ASTM D-4355	80 %
APPARENT OPENING SIZE	ASTM D-4751	40 US SIEVE
FLOW RATE	ASTM D-4491	40 GAL/MIN/SQ FT
PERMITTIVITY	ASTM D-4491	0.55 SEC -1

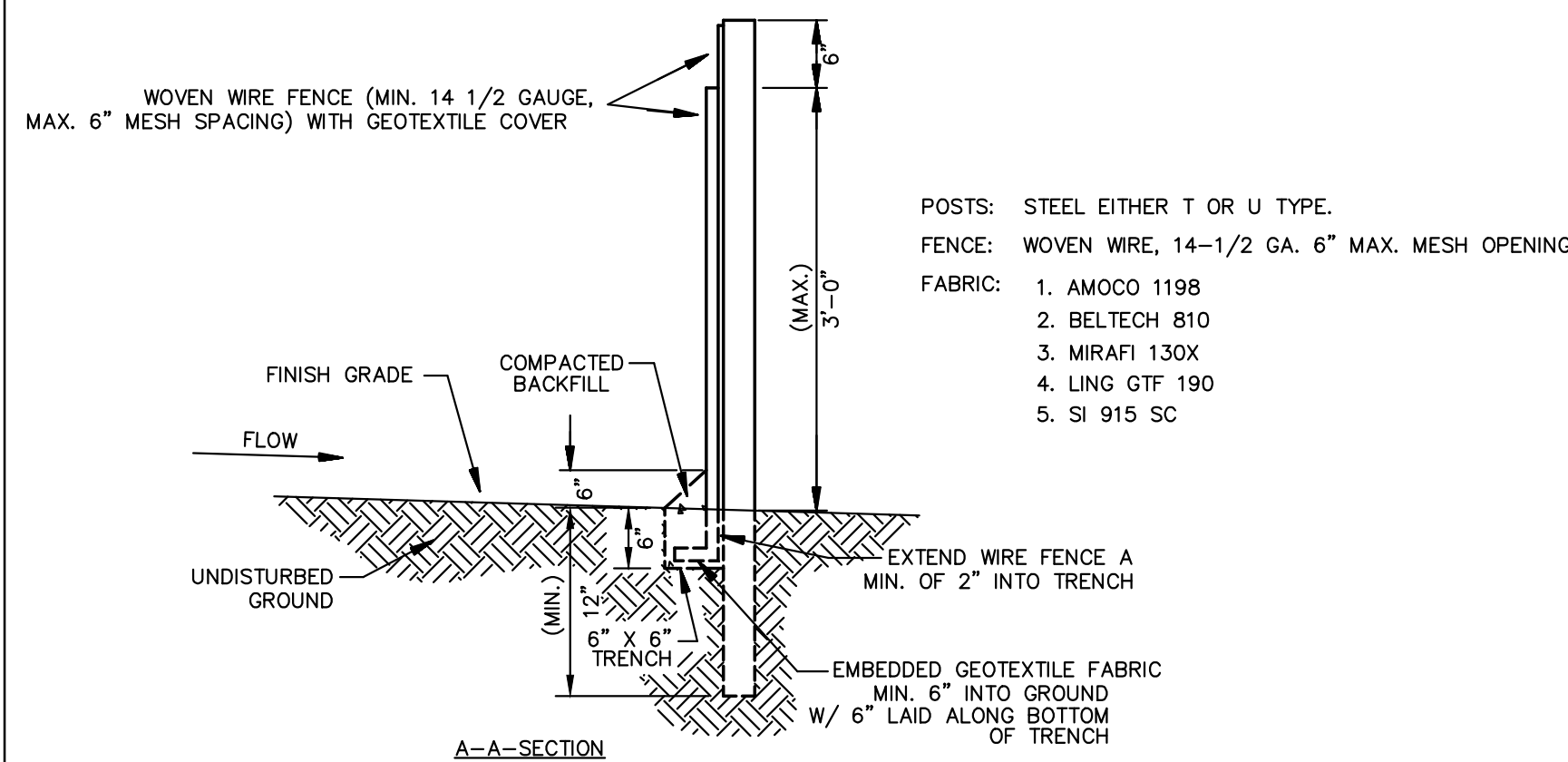
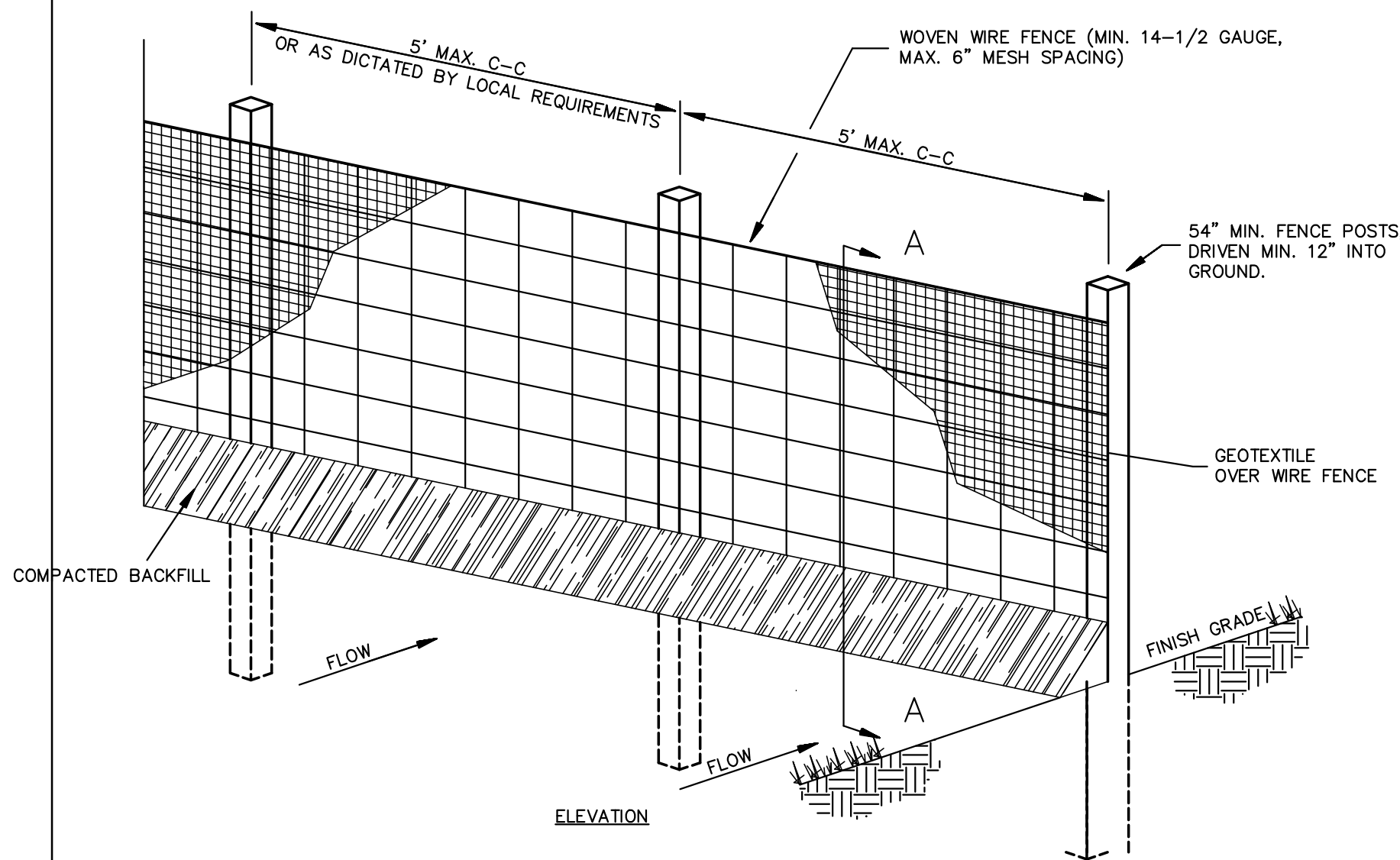
MODERATE TO HIGH FLOW GEOTEXTILE FABRIC SPECIFICATION TABLE		
PROPERTIES	TEST METHOD	UNITS
GRAB TENSILE STRENGTH	ASTM D-4632	265 LBS
GRAB TENSILE ELONGATION	ASTM D-4632	20 %
PUNCTURE	ASTM D-4833	135 LBS
MULLEN BURST	ASTM D-3786	420 PSI
TRAPEZOID TEAR	ASTM D-4533	45 LBS
UV RESISTANCE	ASTM D-4355	90 %
APPARENT OPENING SIZE	ASTM D-4751	20 US SIEVE
FLOW RATE	ASTM D-4491	200 GAL/MIN/SQ FT
PERMITTIVITY	ASTM D-4491	1.5 SEC -1

## IP5 INLET PROTECTION FILTER SACK

N.T.S.

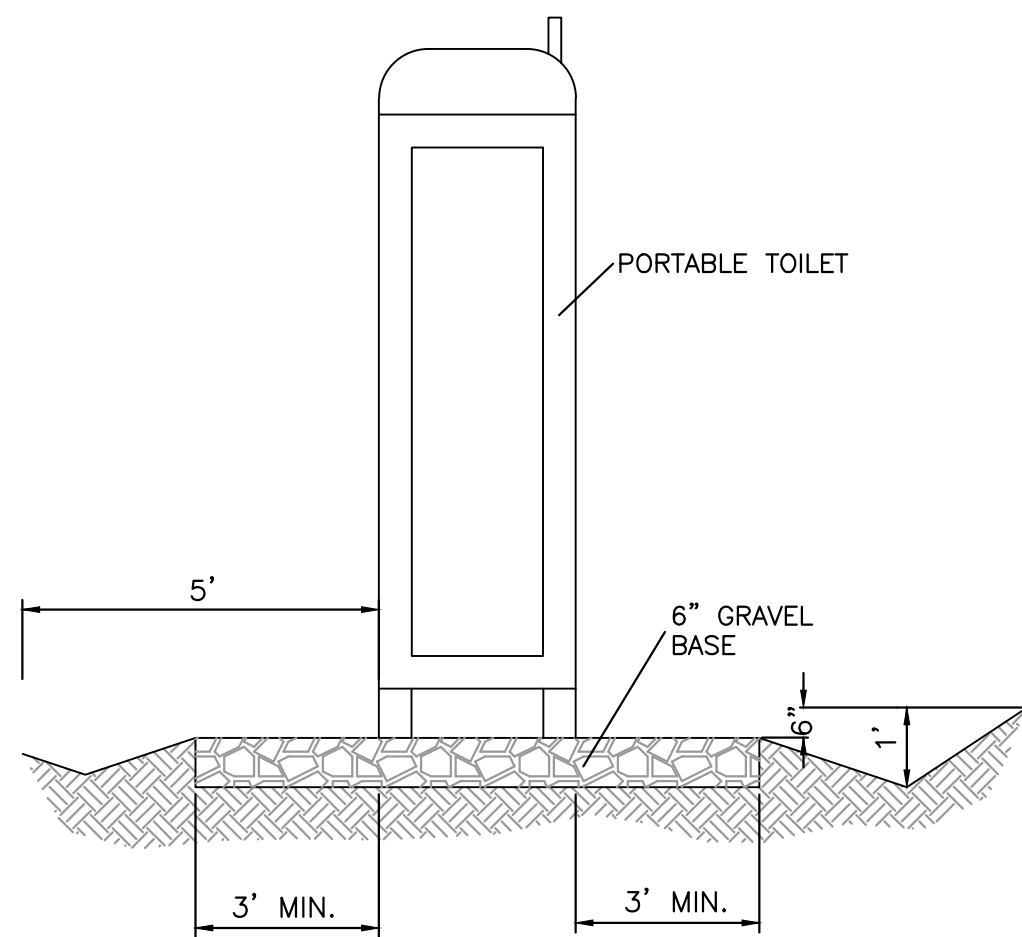
FOR USE ONLY IN PAVED AREAS WHERE SEDIMENT LOADS ARE EXPECTED TO BE VERY LOW. FILTER SACK MUST HAVE OVERFLOW HOLES TO PREVENT PONDING.

<div>ENGINEER'S SEAL</div> <div></div> <div>RONALD R. BOHANNAN P.E. #7868</div>	CARVANA 3800 PAN AMERICAN FWY N.E.	DRAWN BY RMG
	SWPPP DETAILS	DATE 03/11/2020
	<div></div> <div>TIERRA WEST, LLC 5571 MIDWAY PARK PLACE NE ALBUQUERQUE, NM 87109 (505) 858-3100 www.tierrawestllc.com</div>	2020008-SWPPP
		SHEET # 11 JOB # 2020008

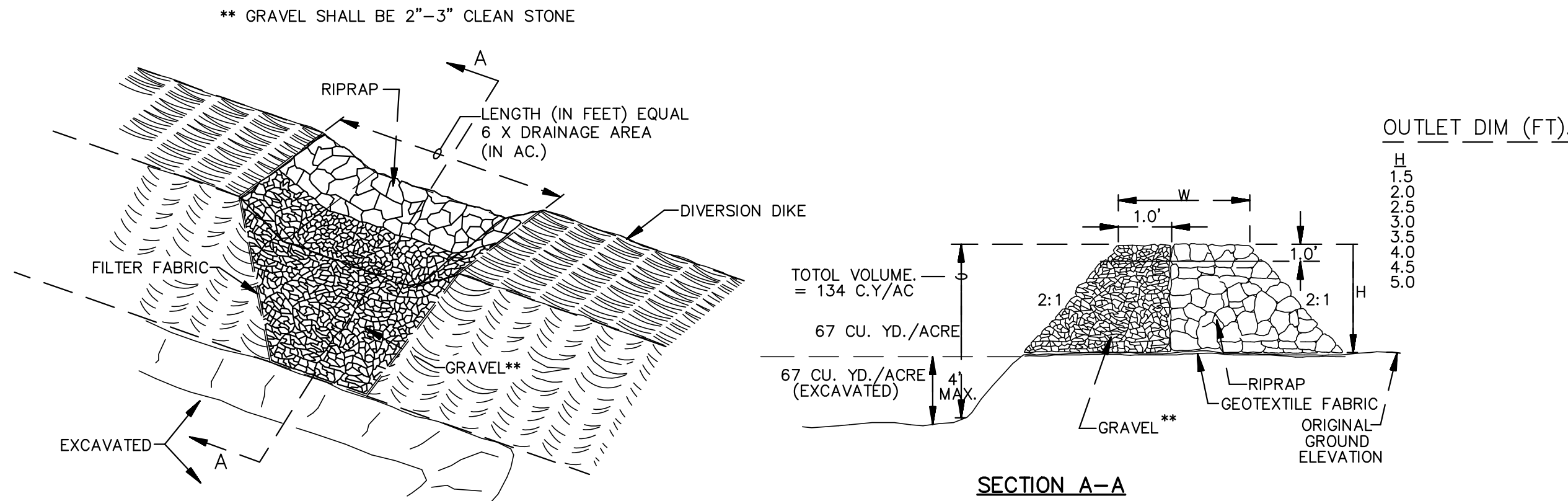


1. WOVEN WIRE FENCE TO BE FASTENED SECURELY TO FENCE POSTS WITH WIRE TIES.
2. GEOTEXTILE TO BE FASTENED SECURELY TO WOVEN WIRE FENCE WITH TIES SPACED EVERY 24" AT TOP AND MID SECTION.
3. WHEN TWO SECTIONS OF GEOTEXTILE ADJOIN EACH OTHER THEY SHALL BE OVERLAPPED BY SIX INCHES AND FOLDED.
4. MAINTENANCE SHALL BE PERFORMED AS NOTED IN THE EROSION CONTROL PLAN. COLLECTED MATERIAL SHALL BE REMOVED WHEN "BULGES" DEVELOP IN THE SILT FENCE.
5. ALL SILT FENCE SHALL INCLUDE WIRE SUPPORT UNLESS INDICATED OTHERWISE

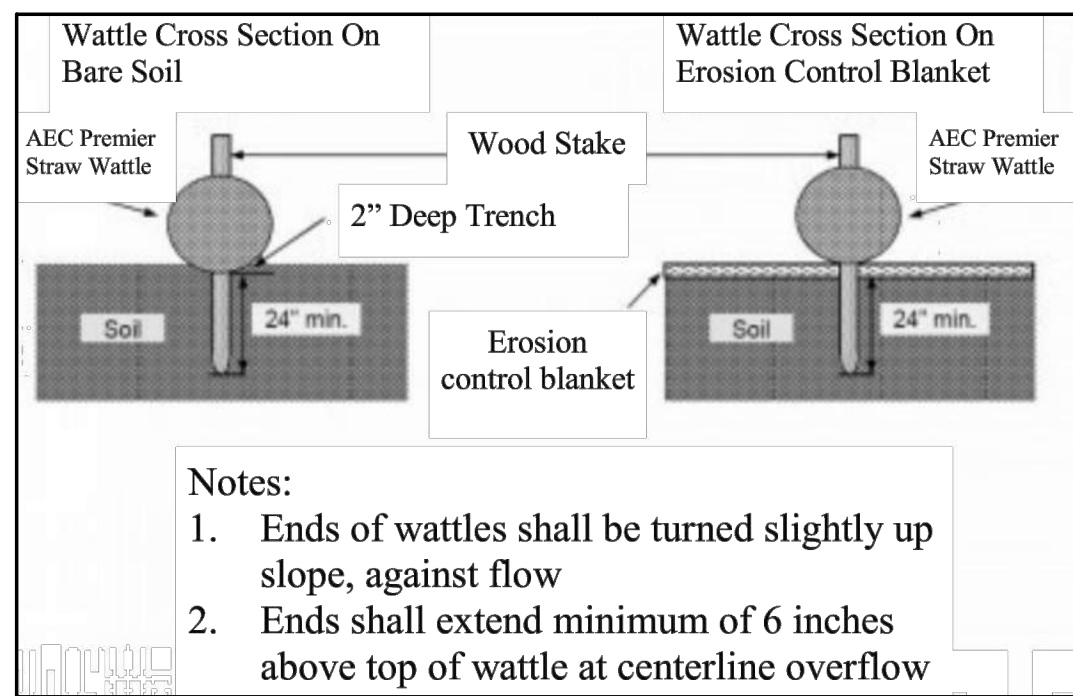
SEDIMENTATION/SILT FENCE WITH WIRE SUPPORT (SF)  
N.T.S.



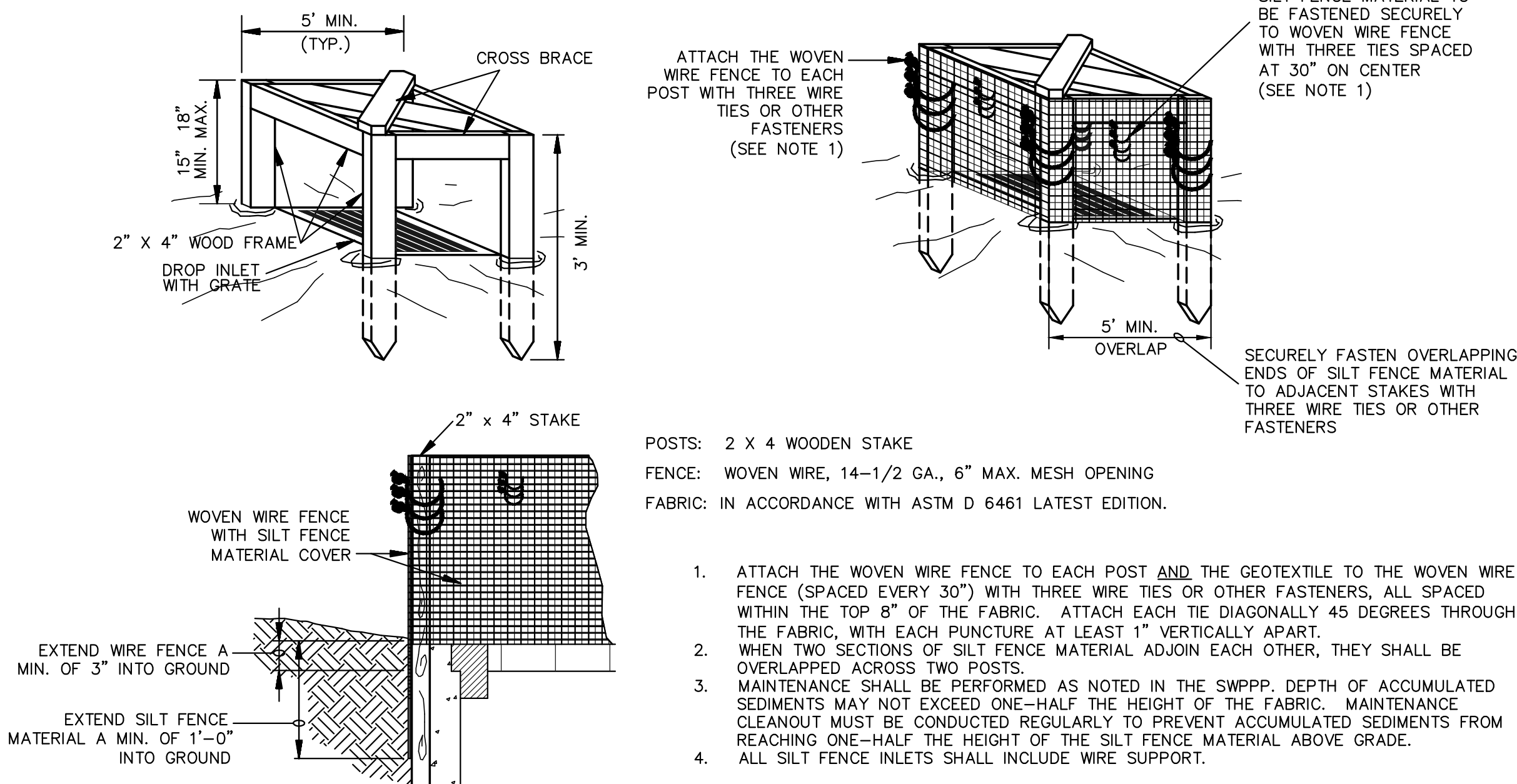
PORTABLE TOILET  
CONTAINMENT DETAIL



OUTLET (PERSPECTIVE)  
TEMPORARY SEDIMENT TRAP (ST)  
N.T.S.



WATTLE DETAIL  
FOR LINEAR CONSTRUCTION (W)  
N.T.S.



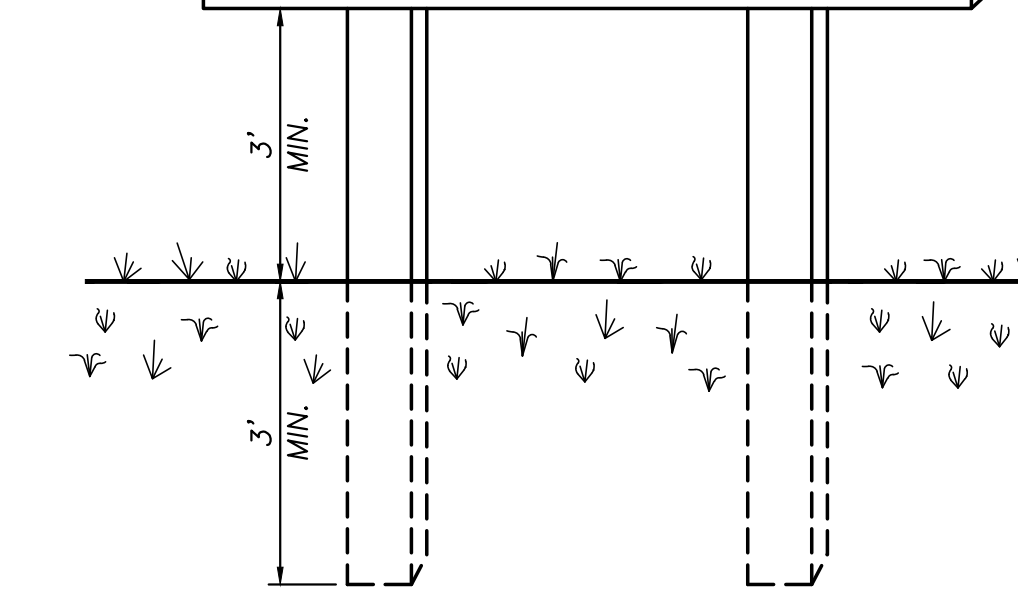
SILT FENCE INLET  
PROTECTION (IP6)  
N.T.S.

SIGN TO BE CONSTRUCTED OF A RIGID MATERIAL, SUCH AS PLYWOOD OR OUTDOOR SIGN BOARD. SIGN MUST BE CONSTRUCTED IN A MANNER TO PROTECT DOCUMENTS FROM DAMAGE DUE TO WEATHER (WIND, SUN, MOISTURE, ETC.).

NPDES PERMIT # NMR000  
CONTACT: NAME, #

If you would like to obtain a copy of the Stormwater Pollution Prevention Plan (SWPPP) for this site, contact the EPA Region 6 office at (214) 665-7217

If you observe indicators of stormwater pollutants in the discharge or in the receiving waterbody, contact the EPA through the following website:  
"www.epa.gov/enforcement/report-environmental-violations"

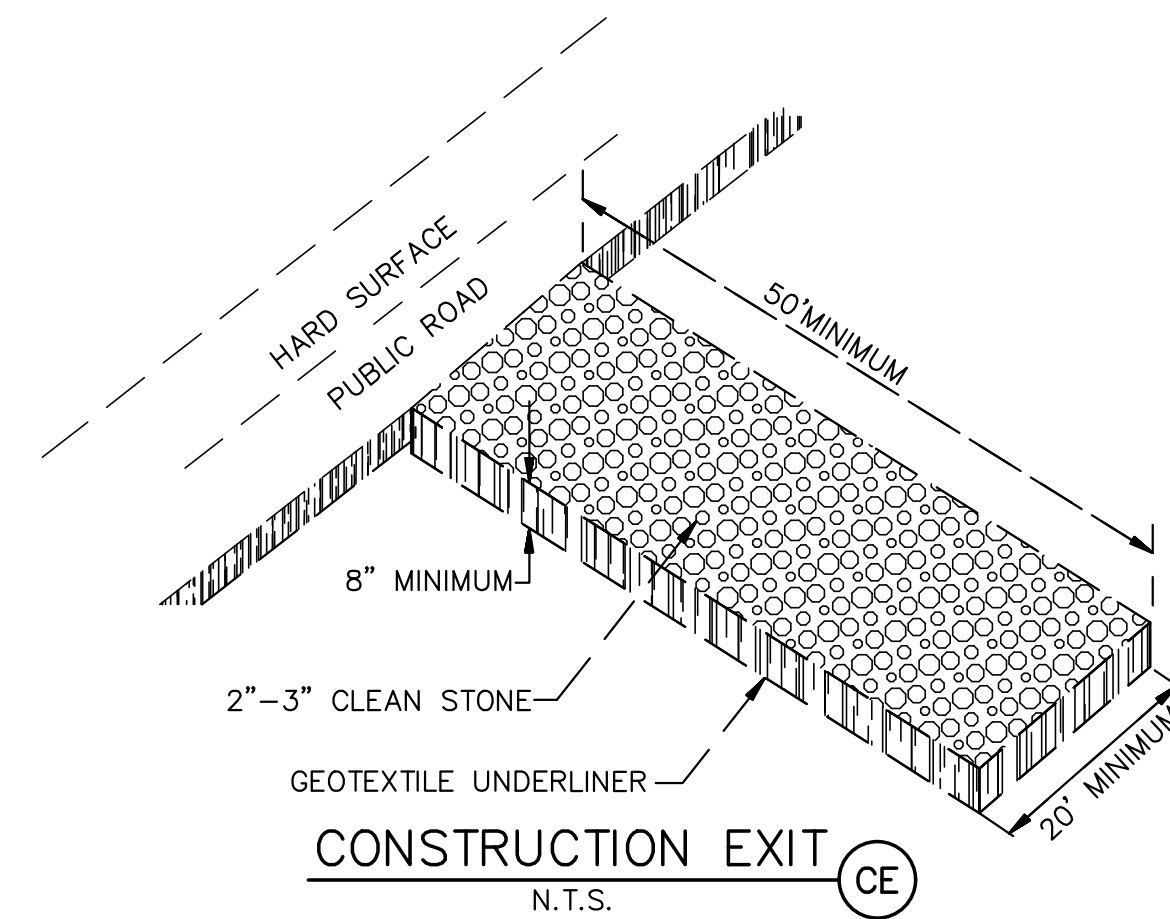


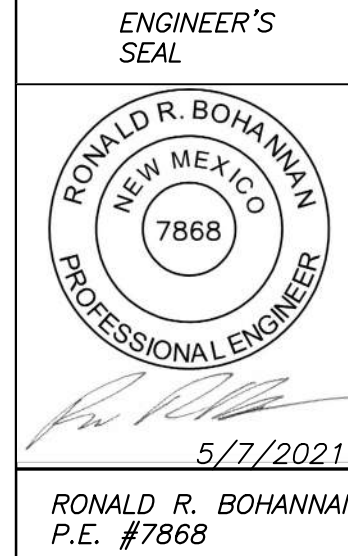
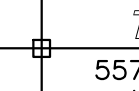
#### SWPPP POSTING REQUIREMENTS:

You must post a sign or other notice of your permit coverage at a safe, publicly accessible location in close proximity to the construction site. The notice must be located so that it is visible from the public road that is nearest to the active part of the construction site, and it must use a font large enough to be readily viewed from a public right-of-way.

- At a minimum, the notice must include:
- 1) The NPDES ID (i.e., permit tracking numbers assigned to the project)
  - 2) A contact name and phone number for obtaining additional construction site information;
  - 3) A website where a copy of the SWPPP may be viewed or the following statement: "If you would like to obtain a copy of the Stormwater Pollution Prevention Plan (SWPPP) for this site, contact the EPA Region 6 office at (214) 665-7217" and;
  - 4) The following statement: "If you observe indicators of stormwater pollutants in the discharge or in the receiving waterbody, contact the EPA through the following website:  
"www.epa.gov/enforcement/report-environmental-violations."

SWPPP INFORMATION SIGN (SS)  
N.T.S.



	ENGINEER'S SEAL	CARVANA 3800 PAN AMERICAN FWY N.E. SWPPP DETAILS	DRAWN BY RMG
			DATE 03/11/2020
		 <b>TIERRA WEST, LLC</b> 5571 MIDWAY PARK PLACE NE ALBUQUERQUE, NM 87109 (505) 858-3100 www.tierrawestllc.com	2020008-SWPPP
			SHEET # <b>12</b> JOB # 2020008