

LEGEND

- PROPERTY LINE
- EXISTING CONTOUR
- PROPOSED LIMITS OF LAND-DISTURBING ACTIVITIES
- PROPOSED STORM PIPE
- SILT FENCE, TYPE I - SEE DETAIL SHEET
- CONSTRUCTION EXIT/ OFFSITE TRACKING PREVENTION
- TEMPORARY SEDIMENTATION POND
- RIP RAP WITH FILTER FABRIC
- STOCKPILE

SITE SOILS

ALL SOILS ONSITE ARE TYPE EMB, EMBUDO GRAVELLY FINE SANDY LOAM, 0 TO 5 PERCENT SLOPES, HYDROLOGIC SOIL GROUP A.

EROSION CONTROL SCHEDULE AND PHASING

THE PROJECT SHALL GENERALLY CONFORM TO THE FOLLOWING PHASING SCHEDULE. REFERENCE THE SWPPP BOOK AND NMED GENERAL PERMIT FOR DETAILED REQUIREMENTS.

- PHASE 1 - DEMOLITION**
  - INSTALL PERIMETER BMP'S INCLUDING THE CONSTRUCTION ENTRANCE/EXIT, SWPPP SIGNAGE, SILT FENCE, AND ALL OTHER NECESSARY BMP'S ACCORDING TO THE LOCATION SHOWN ON THE EROSION CONTROL PLAN. CLEAR ONLY THE MINIMUM AREA REQUIRED TO INSTALL BMP'S.
  - SET THE PROJECT OFFICE TRAILER AND PREPARE TEMPORARY PARKING AND STORAGE AREAS.
  - DENOTE DATES OF BMP INSTALLATION AND MAINTENANCE ON SITE-MAPS.
  - BEGIN DEMOLITION AND CLEARING OF THE SITE.
  - STABILIZATION OF DISTURBED AREAS MUST BE INITIATED WHENEVER CLEARING, GRADING, OR EARTH DISTURBING ACTIVITIES HAVE CEASED ON ANY PORTION OF THE SITE, OR TEMPORARILY CEASED AND WILL NOT RESUME WITHIN 14 DAYS PER GENERAL PERMIT REQUIREMENTS.
- PHASE 2 - GRADING**
  - ENSURE APPROPRIATE BMP'S ARE IN PLACE DOWNSTREAM OF SITE WORK OR WHERE RUNOFF MAY EXIT THE SITE.
  - BEGIN GRADING THE SITE.
  - SEED AND RE-VEGETATE SLOPES AS AREAS ARE BROUGHT TO GRADE OR STOCKPILES THAT WILL REMAIN INACTIVE FOR 14 DAYS PER GENERAL PERMIT REQUIREMENTS.
- PHASE 3 - UTILITIES**
  - KEEP ALL STORM WATER POLLUTION PREVENTION MEASURES IN PLACE.
  - INSTALL UTILITIES, STORM DRAINS, CURB AND GUTTERS.
  - INSTALL INLET PROTECTION AS SPECIFIED ON PLAN SHEETS AS STORM STRUCTURES ARE INSTALLED.
  - TEMPORARILY STABILIZE, THROUGHOUT CONSTRUCTION, ANY DISTURBED AREAS THAT ARE LIKELY TO REMAIN INACTIVE FOR 14 DAYS.
- PHASE 4 - PAVING**
  - KEEP ALL STORM WATER POLLUTION PREVENTION MEASURES IN PLACE.
  - STABILIZE SUBGRADE.
  - PAVE PARKING LOT AND SIDEWALKS AS SPECIFIED ON PLAN SHEETS.
- PHASE 5 - LANDSCAPING AND DEVELOPMENT**
  - INSTALL LANDSCAPING PER THE LANDSCAPE PLANS AND DETAILS.
  - REMOVE EROSION CONTROL DEVICES WHEN FINAL STABILIZATION IS ACHIEVED PER THE TPDES GENERAL PERMIT.
  - STABILIZE ANY AREAS DISTURBED BY REMOVAL OF BMP'S.

GENERAL NOTES

- CONTRACTOR TO VERIFY EXISTING IMPROVEMENTS SHOWN ON THE PLAN.
- CONTRACTOR TO PROTECT IN PLACE, DURING DEMOLITION AND CONSTRUCTION, ALL EXISTING IMPROVEMENTS THAT ARE TO REMAIN AS NOTED ON THE PLAN.
- ANY EXISTING STRUCTURE, IMPROVEMENT OR APPURTENANCE TO REMAIN THAT IS DAMAGED DURING DEMOLITION OR CONSTRUCTION SHALL BE IMMEDIATELY REPAIRED OR REPLACED BY THE CONTRACTOR AT THE CONTRACTOR'S EXPENSE.
- CONTRACTOR SHALL VERIFY AND LOCATE ALL EXISTING UNDERGROUND UTILITIES BEFORE CONSTRUCTION AND PROTECT IN PLACE UNLESS NOTES ON THE PLANS.
- THE CONTRACTOR SHALL EXERCISE CAUTION TECHNIQUES TO PROTECT AND PRESERVE EXISTING PERMANENT SURVEY MONUMENTS. ALL SURVEY MONUMENTS DISTURBED (PROPOSED AND EXISTING) SHALL BE REPLACED AND/OR REHABILITATED IN ACCORDANCE WITH STANDARDS BY A PROFESSIONAL LAND SURVEYOR RETAINED BY THE CONTRACTOR.

SITE DATA

LOT AREA	55,027 SF ± 1.26 AC
TOTAL DISTURBED AREA	69,241 SF ± 1.59 AC
• DISTURBED AREA ONSITE	50,168 SF ± 1.15 AC
• DISTURBED AREA OFFSITE	19,073 SF ± 0.44 AC

24-HR EMERGENCY CONTACT

RAISING CANE'S RESTAURANTS, LLC  
ROBERT MONTGOMERY  
(972) 769-3357

CITY OF ALBUQUERQUE EROSION CONTROL NOTES

- ALL EROSION AND SEDIMENT CONTROL (ESC) WORK ON THESE PLANS, EXCEPT AS OTHERWISE STATED OR PROVIDED HEREON SHALL BE PERMITTED, CONSTRUCTED, INSPECTED, AND MAINTAINED IN ACCORDANCE WITH:
  - THE CITY ORDINANCE § 14-5-2.11, THE ESC ORDINANCE.
  - THE EPA'S 2017 CONSTRUCTION GENERAL PERMIT (CGP) AND
  - THE CITY OF ALBUQUERQUE CONSTRUCTION BMP MANUAL
- ALL BMP'S MUST BE INSTALLED PRIOR TO BEGINNING ANY EARTH MOVING ACTIVITIES EXCEPT AS SPECIFIED HEREON IN THE PHASING PLAN. CONSTRUCTION OF EARTHEN BMP'S SUCH AS SEDIMENT TRAPS, SEDIMENT BASINS, AND DIVERSION BERMS SHALL BE COMPLETED AND INSPECTED PRIOR TO ANY OTHER CONSTRUCTION OR EARTHWORK. SELF-INSPECTION IS REQUIRED AFTER INSTALLATION OF THE BMP'S AND PRIOR TO BEGINNING CONSTRUCTION.
- SELF-INSPECTIONS - AT A MINIMUM A ROUTINE COMPLIANCE SELF-INSPECTION IS REQUIRED TO REVIEW THE PROJECT FOR COMPLIANCE WITH THE CONSTRUCTION GENERAL PERMIT ONCE EVERY 14 DAYS AND AFTER ANY PRECIPITATION EVENT OF 1/4 INCH OR GREATER UNTIL THE SITE CONSTRUCTION HAS BEEN COMPLETED AND THE SITE DETERMINED AS STABILIZED BY THE CITY. REPORTS OF THESE INSPECTIONS SHALL BE KEPT BY THE PERSON OR ENTITY AUTHORIZED TO DIRECT THE CONSTRUCTION ACTIVITIES ON THE SITE AND MADE AVAILABLE UPON REQUEST.
- CORRECTIVE ACTION REPORTS MUST BE KEPT BY THE PERSON OR ENTITY AUTHORIZED TO DIRECT THE CONSTRUCTION ACTIVITIES ON THE SITE AND MADE AVAILABLE UPON REQUEST.
- STABILIZATION REPORTS MUST BE KEPT BY THE PERSON OR ENTITY AUTHORIZED TO DIRECT THE CONSTRUCTION ACTIVITIES ON THE SITE AND MADE AVAILABLE UPON REQUEST. REPORTS SHOULD INCLUDE RECORDS OF WEED REMOVAL PER CITY ORDINANCE (§ 9-8-1), STERILIZATION, SOIL TEST RESULTS AND RECOMMENDATION, MATERIALS AND MANUFACTURER'S SPECIFICATIONS FOR APPLICATION RATES, ESTIMATED FUNCTIONAL LONGEVITY, METHODS OF APPLICATION, INSPECTION AND MAINTENANCE. THE REDUCED SELF-INSPECTION SCHEDULE IN CGP 4.4.1 APPLIES TO STABILIZED AREA AND ANY DAMAGED OR WORN STABILIZATION MUST BE IDENTIFIED IN THE REPORTS ALONG WITH WEED PROBLEMS. CORRECTIVE ACTIONS FOR STABILIZATION SHALL BE DOCUMENTED IN A STABILIZATION REPORT INCLUDING ACTUAL RATES AND DATES OF STABILIZATION, AND THE MATERIALS AND MANUFACTURER'S SPECIFICATIONS USED.
- BMP'S SHALL BE INSPECTED AND MAINTAINED UNTIL ALL DISTURBED AREAS ARE STABILIZED IN ACCORDANCE WITH THE FINAL STABILIZATION CRITERIA (GCP 2.2.14.B). GENERALLY, ALL DISTURBED AREAS, OTHER THAN STRUCTURES AND IMPERVIOUS SURFACES, MUST HAVE UNIFORM PERENNIAL VEGETATION THAT PROVIDES 70 PERCENT OR MORE OF THE COVER PROVIDED BY NATIVE VEGETATION OR SEED THE DISTURBED AREA AND PROVIDE NON-VEGETATIVE MULCH THAT PROVIDES COVER FOR AT LEAST THREE YEARS WITHOUT ACTIVE MAINTENANCE. FINAL STABILIZATION MUST BE APPROVED BY THE CITY OF ALBUQUERQUE PRIOR TO REMOVAL OF BMP'S AND DISCONTINUATION OF INSPECTIONS.



Store:  
**Montgomery & San Mateo**  
**ALBUQUERQUE, NM 87112**  
**Restaurant #RC852**  
**P4E-V-AV SCHEME A**

Engineer's Information:

Kimley»Horn

© 2022 KIMLEY-HORN AND ASSOCIATES, INC.  
13455 Noel Road  
Two Galleria Office Tower  
Suite 700  
Dallas, TX 75240  
CONTACT: LAUREN NUFFER, P.E.  
(972) 770-1300  
LAUREN.NUFFER@KIMLEY-HORN.COM  
LIZ WILLMOT, P.E.  
LIZ.WILLMOT@KIMLEY-HORN.COM

Professional of Record:



Prototype : P4E-V-AV 2021 - 2.0 RELEASE

Prototype Issue Date: 10.04.2021

Kitchen Issue Date: 08.02.2021

Design Bulletin Updates: --

Date Issued: Bulletin Number: --

2ND BLDG. RESUBMITTAL

REVISIONS:

1	11/12/2021	80% REVIEW SET
2	11/30/2021	1ST BLDG SUBMITTAL
3	12/20/2021	1ST BLDG RESUBMITTAL
4	01/17/2022	2ND BLDG RESUBMITTAL
5		
6		
7		
8		
9		

Sheet Title:

EROSION CONTROL PLAN PH. I

Date: 05.25.2022

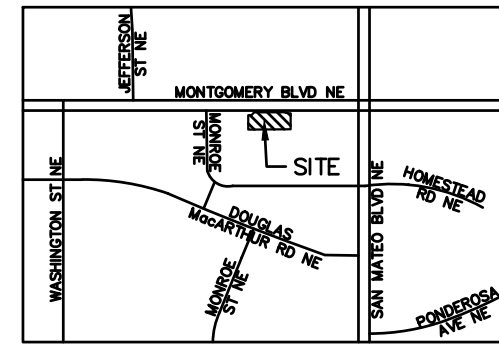
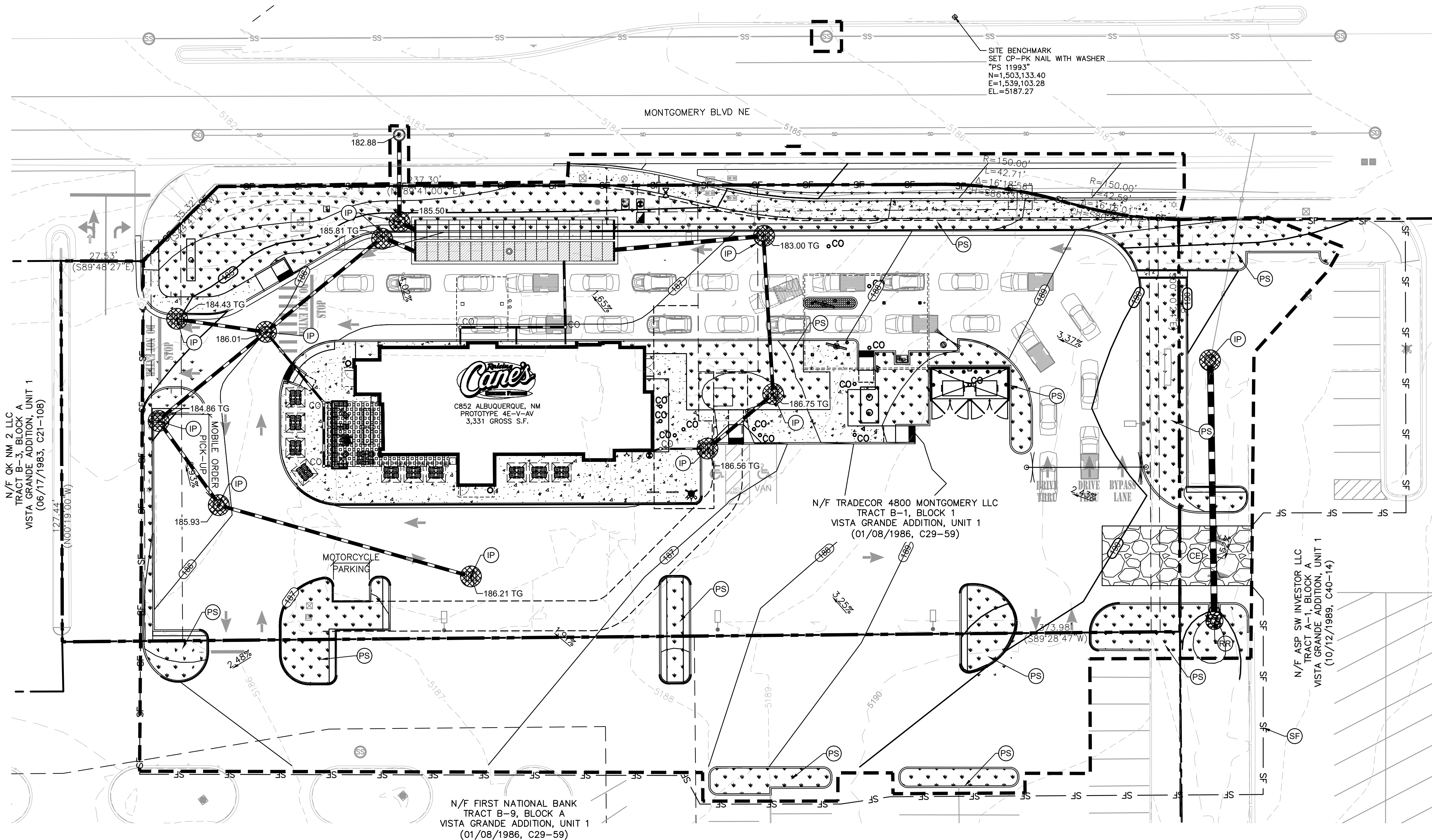
Project Number: 090042000

Drawn By: LW/LN

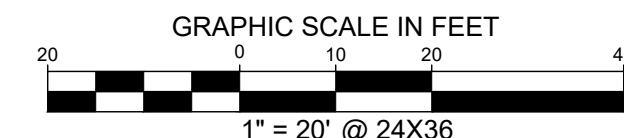
Sheet Number:

C3.0





VICINITY MAP  
(NOT TO SCALE)



LEGEND

- PROPERTY LINE
- EXISTING CONTOUR
- PROPOSED CONTOUR
- PROPOSED LIMITS OF LAND-DISTURBING ACTIVITIES
- DIRECTION OF OVERLAND FLOW W/ GRADE
- SILT FENCE, TYPE I - SEE DETAIL SHEET
- CONSTRUCTION EXIT/ OFFSITE TRACKING PREVENTION
- PERMANENT STABILIZATION
- RIP RAP WITH FILTER FABRIC
- INLET SEDIMENT CONTROL DEVICE

EROSION CONTROL SCHEDULE AND PHASING

THE PROJECT SHALL GENERALLY CONFORM TO THE FOLLOWING PHASING SCHEDULE. REFERENCE THE SWPPP BOOK AND NMED GENERAL PERMIT FOR DETAILED REQUIREMENTS.

- PHASE 1 - DEMOLITION**
- INSTALL PERIMETER BMP'S INCLUDING THE CONSTRUCTION ENTRANCE/EXIT, SWPPP SIGNAGE, SILT FENCE, AND ALL OTHER NECESSARY BMP'S ACCORDING TO THE LOCATION SHOWN ON THE EROSION CONTROL PLAN. CLEAR ONLY THE MINIMUM AREA REQUIRED TO INSTALL BMP'S.
  - SET THE PROJECT OFFICE TRAILER AND PREPARE TEMPORARY PARKING AND STORAGE AREAS.
  - DENOTE DATES OF BMP INSTALLATION AND MAINTENANCE ON SITE-MAPS.
  - BEGIN DEMOLITION AND CLEARING OF THE SITE.
  - STABILIZATION OF DISTURBED AREAS MUST BE INITIATED WHENEVER CLEARING, GRADING, OR EARTH DISTURBING ACTIVITIES HAVE CEASED ON ANY PORTION OF THE SITE, OR TEMPORARILY CEASED AND WILL NOT RESUME WITHIN 14 DAYS PER GENERAL PERMIT REQUIREMENTS.

- PHASE 2 - GRADING**
- ENSURE APPROPRIATE BMP'S ARE IN PLACE DOWNSTREAM OF SITE WORK OR WHERE RUNOFF MAY EXIT THE SITE.
  - BEGIN GRADING THE SITE.
  - SEED AND RE-VEGETATE SLOPES AS AREAS ARE BROUGHT TO GRADE OR STOCKPILES THAT WILL REMAIN INACTIVE FOR 14 DAYS PER GENERAL PERMIT REQUIREMENTS.

- PHASE 3 - UTILITIES**
- KEEP ALL STORM WATER POLLUTION PREVENTION MEASURES IN PLACE.
  - INSTALL UTILITIES, STORM DRAINS, CURB AND GUTTERS.
  - INSTALL INLET PROTECTION AS SPECIFIED ON PLAN SHEETS AS STORM STRUCTURES ARE INSTALLED.
  - TEMPORARILY STABILIZE, THROUGHOUT CONSTRUCTION, ANY DISTURBED AREAS THAT ARE LIKELY TO REMAIN INACTIVE FOR 14 DAYS.

- WORK ORDER**
- KEEP ALL STORM WATER POLLUTION PREVENTION MEASURES IN PLACE.
  - BEGIN DEMOLITION AND CLEARING OF PAVEMENT IN ROW.
  - INSTALL UTILITIES, STORM DRAINS, CURB AND GUTTERS, VALLEY GUTTERS, SIDEWALK, ASPHALT PAVEMENT, AND STRIPING PER DRC PLAN SET #642183.

- PHASE 4 - PAVING**
- KEEP ALL STORM WATER POLLUTION PREVENTION MEASURES IN PLACE.
  - STABILIZE SUBGRADE.
  - PAVE PARKING LOT AND SIDEWALKS AS SPECIFIED ON PLAN SHEETS.

- PHASE 5 - LANDSCAPING AND DEVELOPMENT**
- INSTALL LANDSCAPING PER THE LANDSCAPE PLANS AND DETAILS.
  - REMOVE EROSION CONTROL DEVICES WHEN FINAL STABILIZATION IS ACHIEVED PER THE TPDES GENERAL PERMIT.
  - STABILIZE ANY AREAS DISTURBED BY REMOVAL OF BMP'S.

GENERAL NOTES

- CONTRACTOR TO VERIFY EXISTING IMPROVEMENTS SHOWN ON THE PLAN.
- CONTRACTOR TO PROTECT IN PLACE, DURING DEMOLITION AND CONSTRUCTION, ALL EXISTING IMPROVEMENTS THAT ARE TO REMAIN AS NOTED ON THE PLAN.
- ANY EXISTING STRUCTURE, IMPROVEMENT OR APPURTENANCE TO REMAIN THAT IS DAMAGED DURING DEMOLITION OR CONSTRUCTION SHALL BE IMMEDIATELY REPAIRED OR REPLACED BY THE CONTRACTOR AT THE CONTRACTOR'S EXPENSE.
- CONTRACTOR SHALL VERIFY AND LOCATE ALL EXISTING UNDERGROUND UTILITIES BEFORE CONSTRUCTION AND PROTECT IN PLACE UNLESS NOTES ON THE PLANS.
- THE CONTRACTOR SHALL EXERCISE CAUTION TECHNIQUES TO PROTECT AND PRESERVE EXISTING PERMANENT SURVEY MONUMENTS. ALL SURVEY MONUMENTS DISTURBED (PROPOSED AND EXISTING) SHALL BE REPLACED AND/OR REHABILITATED IN ACCORDANCE WITH STANDARDS BY A PROFESSIONAL LAND SURVEYOR RETAINED BY THE CONTRACTOR.

SITE DATA

LOT AREA	55,027 SF ± 1.26 AC
TOTAL DISTURBED AREA	69,241 SF ± 1.59 AC
• DISTURBED AREA ONSITE	50,168 SF ± 1.15 AC
• DISTURBED AREA OFFSITE	19,073 SF ± 0.44 AC

24-HR EMERGENCY CONTACT

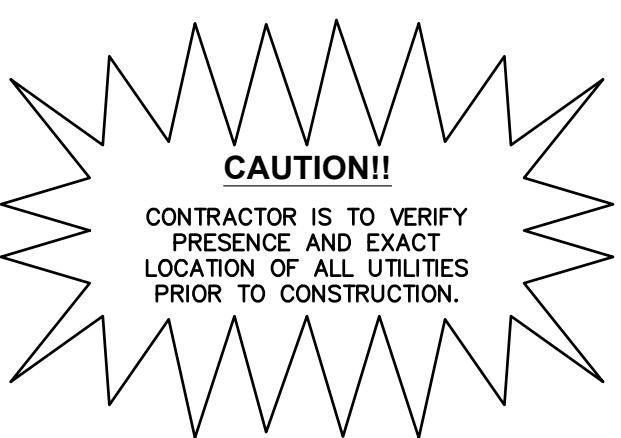
RAISING CANE'S RESTAURANTS, LLC  
ROBERT MONTGOMERY  
(972) 769-3357

CITY OF ALBUQUERQUE EROSION CONTROL NOTES

- ALL EROSION AND SEDIMENT CONTROL (ESC) WORK ON THESE PLANS, EXCEPT AS OTHERWISE STATED OR PROVIDED HEREON SHALL BE PERMITTED, CONSTRUCTED, INSPECTED, AND MAINTAINED IN ACCORDANCE WITH:
  - THE CITY ORDINANCE § 14-5-2.11, THE ESC ORDINANCE.
  - THE EPA'S 2017 CONSTRUCTION GENERAL PERMIT (CGP) AND
  - THE CITY OF ALBUQUERQUE CONSTRUCTION BMP MANUAL
- ALL BMP'S MUST BE INSTALLED PRIOR TO BEGINNING ANY EARTH MOVING ACTIVITIES EXCEPT AS SPECIFIED HEREON IN THE PHASING PLAN. CONSTRUCTION OF EARTHEN BMP'S SUCH AS SEDIMENT TRAPS, SEDIMENT BASINS, AND DIVERSION BERMS SHALL BE COMPLETED AND INSPECTED PRIOR TO ANY OTHER CONSTRUCTION OR EARTHWORK. SELF-INSPECTION IS REQUIRED AFTER INSTALLATION OF THE BMP'S AND PRIOR TO BEGINNING CONSTRUCTION.
- SELF-INSPECTIONS - AT A MINIMUM A ROUTINE COMPLIANCE SELF-INSPECTION IS REQUIRED TO REVIEW THE PROJECT FOR COMPLIANCE WITH THE CONSTRUCTION GENERAL PERMIT ONCE EVERY 14 DAYS AND AFTER ANY PRECIPITATION EVENT OF 1/4 INCH OR GREATER UNTIL THE SITE CONSTRUCTION HAS BEEN COMPLETED AND THE SITE DETERMINED AS STABILIZED BY THE CITY. REPORTS OF THESE INSPECTIONS SHALL BE KEPT BY THE PERSON OR ENTITY AUTHORIZED TO DIRECT THE CONSTRUCTION ACTIVITIES ON THE SITE AND MADE AVAILABLE UPON REQUEST.
- CORRECTIVE ACTION REPORTS MUST BE KEPT BY THE PERSON OR ENTITY AUTHORIZED TO DIRECT THE CONSTRUCTION ACTIVITIES ON THE SITE AND MADE AVAILABLE UPON REQUEST.
- STABILIZATION REPORTS MUST BE KEPT BY THE PERSON OR ENTITY AUTHORIZED TO DIRECT THE CONSTRUCTION ACTIVITIES ON THE SITE AND MADE AVAILABLE UPON REQUEST. REPORTS SHOULD INCLUDE RECORDS OF WEED REMOVAL PER CITY ORDINANCE (§ 9-8-1), STERILIZATION, SOIL TEST RESULTS AND RECOMMENDATION, MATERIALS AND MANUFACTURER'S SPECIFICATIONS FOR APPLICATION RATES, ESTIMATED FUNCTIONAL LONGEVITY, METHOD OF APPLICATION, INSPECTION AND MAINTENANCE. THE REDUCED SELF-INSPECTION SCHEDULE IN CGP 4.4.1 APPLIES TO STABILIZED AREA AND ANY DAMAGED OR WORN STABILIZATION MUST BE IDENTIFIED IN THE REPORTS ALONG WITH WEED PROBLEMS. CORRECTIVE ACTIONS FOR STABILIZATION SHALL BE DOCUMENTED IN A STABILIZATION REPORT INCLUDING ACTUAL RATES AND DATES OF STABILIZATION, AND THE MATERIALS AND MANUFACTURER'S SPECIFICATIONS USED.
- BMP'S SHALL BE INSPECTED AND MAINTAINED UNTIL ALL DISTURBED AREAS ARE STABILIZED IN ACCORDANCE WITH THE FINAL STABILIZATION CRITERIA (GCP 2.2.14.B). GENERALLY, ALL DISTURBED AREAS, OTHER THAN STRUCTURES AND IMPERVIOUS SURFACES, MUST HAVE UNIFORM PERENNIAL VEGETATION THAT PROVIDES 70 PERCENT OR MORE OF THE COVER PROVIDED BY NATIVE VEGETATION OR SEED THE DISTURBED AREA AND PROVIDE NON-VEGETATIVE MULCH THAT PROVIDES COVER FOR AT LEAST THREE YEARS WITHOUT ACTIVE MAINTENANCE. FINAL STABILIZATION MUST BE APPROVED BY THE CITY OF ALBUQUERQUE PRIOR TO REMOVAL OF BMP'S AND DISCONTINUATION OF INSPECTIONS.

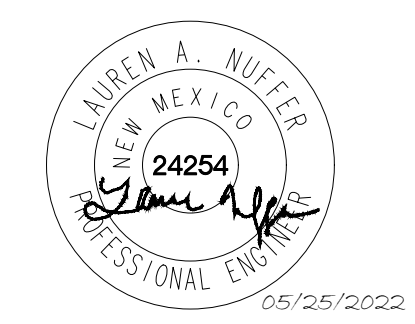
SITE SOILS

ALL SOILS ONSITE ARE TYPE EMB, EMBUDO GRAVELLY FINE SANDY LOAM, 0 TO 5 PERCENT SLOPES, HYDROLOGIC SOIL GROUP A.



Store:  
**Montgomery & San Mateo**  
**ALBUQUERQUE, NM 87112**  
**Restaurant #RC852**  
**P4E-V-AV SCHEME A**

Engineer's Information:  
**Kimley»Horn**  
© 2022 KIMLEY-HORN AND ASSOCIATES, INC.  
13455 Noel Road  
Two Galleria Office Tower  
Suite 700  
Dallas, TX 75240  
CONTACT: LAUREN NUFFER, P.E.  
(972) 770-1300  
LAUREN.NUFFER@KIMLEY-HORN.COM  
LIZ WILLMOT, P.E.  
LIZ.WILLMOT@KIMLEY-HORN.COM  
Professional of Record:



Prototype :	P4E-V-AV 2021- 2.0 RELEASE
Prototype Issue Date:	10.04.2021
Kitchen Issue Date:	08.02.2021
Design Bulletin Updates:	--
Date Issued:	Bulletin Number:
--	--

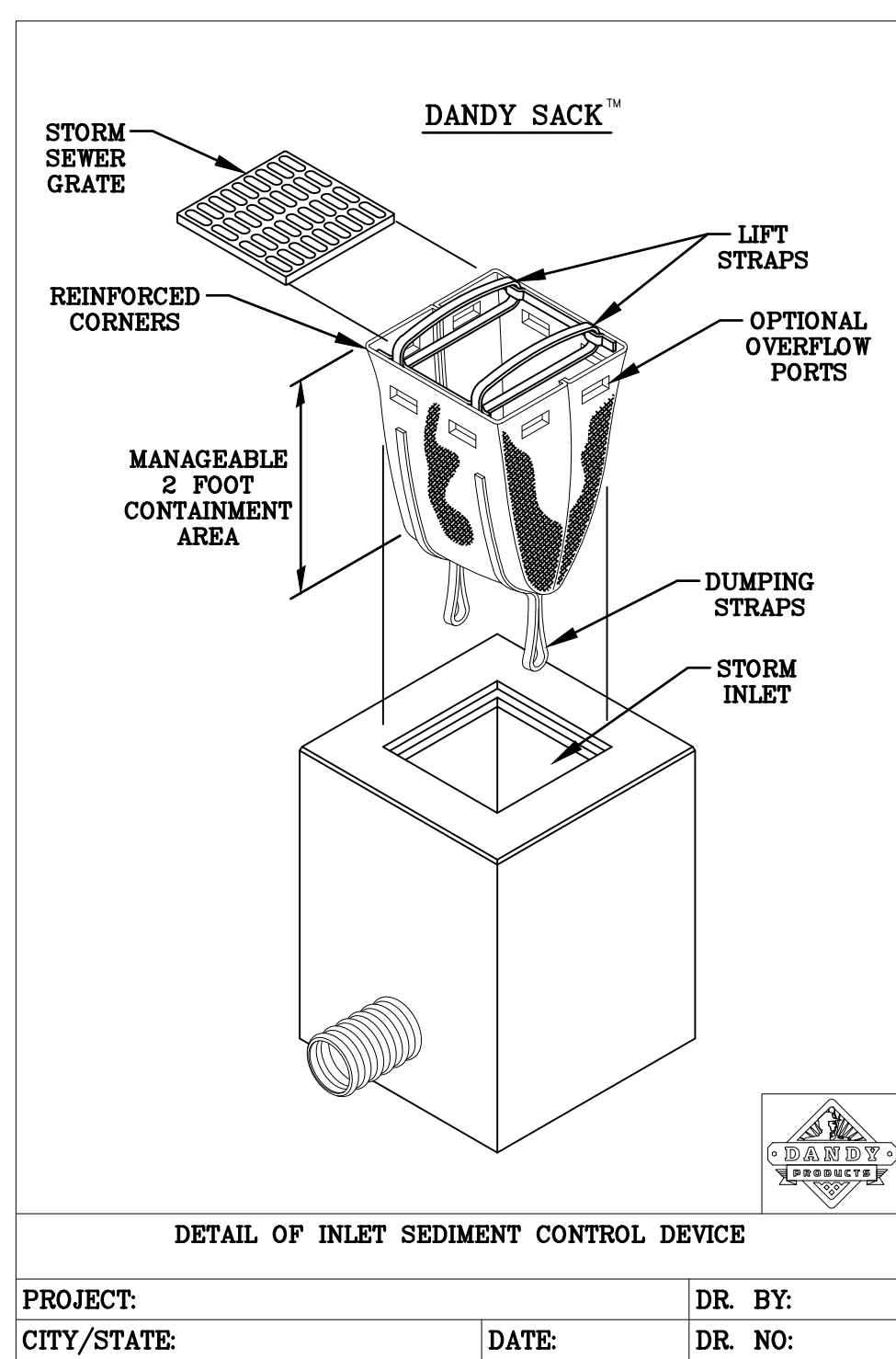
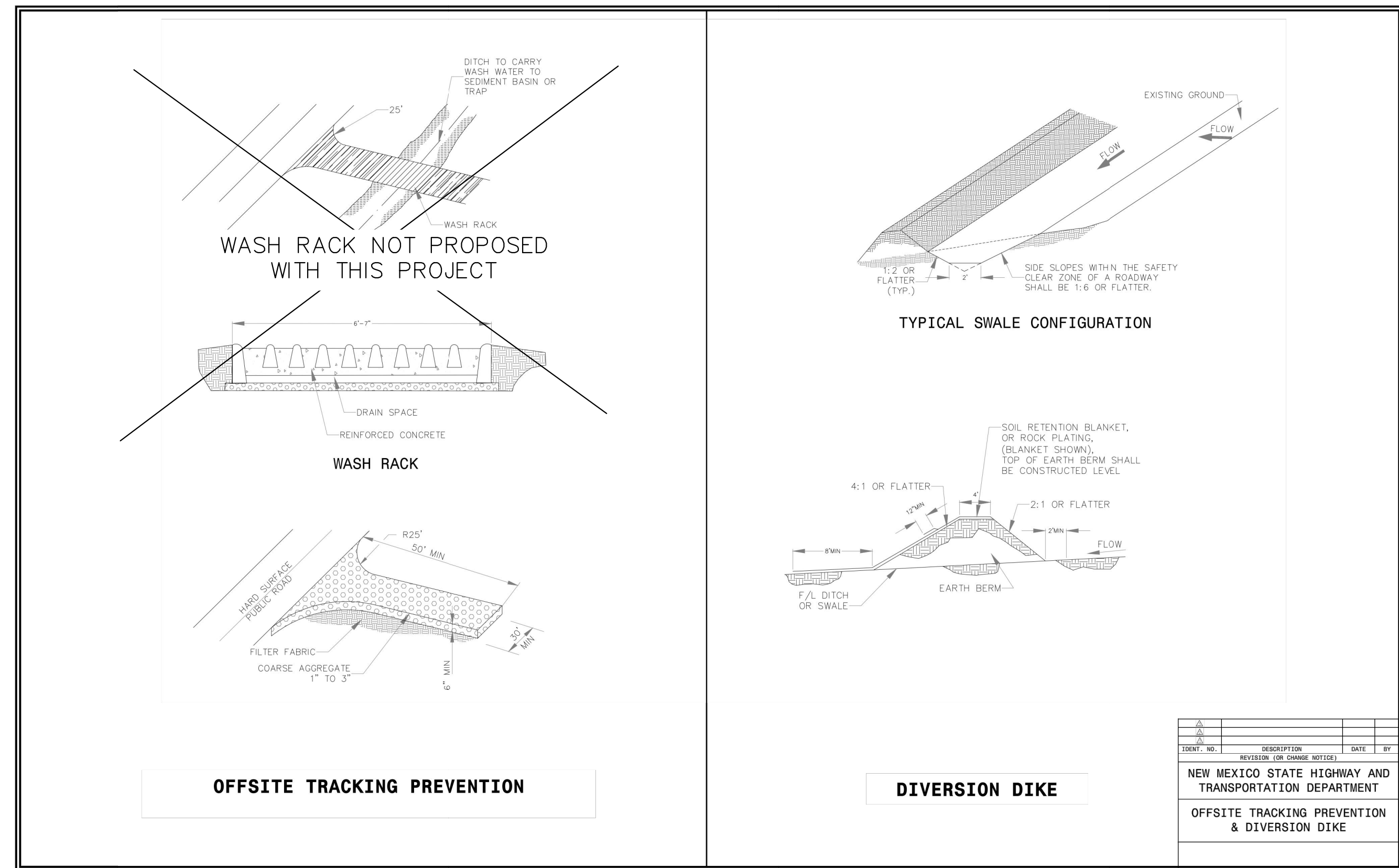
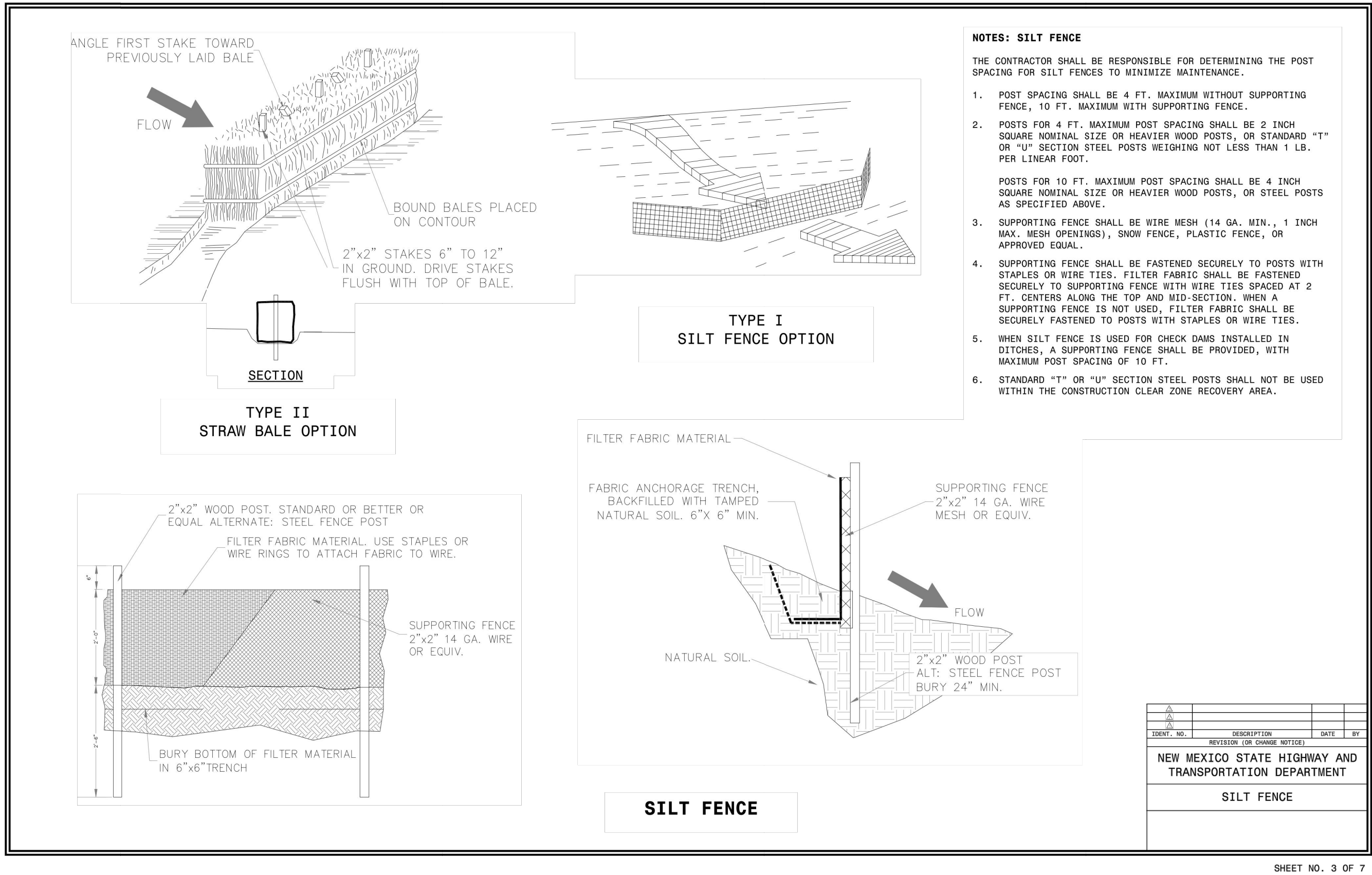
2ND BLDG. RESUBMITTAL

REVISIONS:		
1	11/12/2021	80% REVIEW SET
2	11/30/2021	1ST BLDG SUBMITTAL
3	12/20/2021	1ST BLDG RESUBMITTAL
4	01/17/2022	2ND BLDG RESUBMITTAL
5		
6		
7		
8		
9		

Sheet Title:  
**EROSION CONTROL PLAN PH. II**  
Date: 05.25.2022  
Project Number: 090042000  
Drawn By: LW/LN  
Sheet Number:

C3.1





DANDY SACK™ SPECIFICATIONS

NOTE: THE DANDY SACK™ WILL BE MANUFACTURED IN THE U.S.A. FROM A WOVEN MONOPLAMENT FABRIC THAT MEETS OR EXCEEDS THE FOLLOWING SPECIFICATIONS:

Mechanical Properties	Test Method	Units	MARV
Grab Tensile Strength	ASTM D 4632	KN (lbs)	1.78 (400) x 1.40 (315)
Grab Tensile Elongation	ASTM D 4632	%	15 x 15
Puncture Strength	ASTM D 4833	KN (lbs)	0.67 (150)
Mullen Burst Strength	ASTM D 3786	KPa (psi)	3506 (505)
Trapezoid Tear Strength	ASTM D 4533	KN (lbs)	0.67 (150) x 0.75 (165)
UV Resistance	ASTM D 4355	%	90
Apparent Opening Size	ASTM D 4751	Mm (US Std. Sieve)	0.425 (40)
Flow Rate	ASTM D 4491	l/min/m² (gal/min/ft²)	2852 (76)
Permeability	ASTM D 4491	Sec⁻¹	0.90

HI-FLOW DANDY SACK™ (SAFETY ORANGE)

Mechanical Properties	Test Method	Units	MARV
Grab Tensile Strength	ASTM D 4632	KN (lbs)	1.62 (365) X 0.89 (200)
Grab Tensile Elongation	ASTM D 4632	%	24 X 10
Puncture Strength	ASTM D 4833	KN (lbs)	0.49 (90)
Mullen Burst Strength	ASTM D 3786	KPa (psi)	3097 (450)
Trapezoid Tear Strength	ASTM D 4533	KN (lbs)	0.91 (115) X 0.33 (75)
UV Resistance	ASTM D 4355	%	90
Apparent Opening Size	ASTM D 4751	Mm (US Std. Sieve)	0.425 (40)
Flow Rate	ASTM D 4491	l/min/m² (gal/min/ft²)	3697 (145)
Permeability	ASTM D 4491	Sec⁻¹	2.1

\*Note: All Dandy Sacks™ can be ordered with our optional oil absorbent pillows



Store:

Montgomery & San Mateo

ALBUQUERQUE, NM 87112

Restaurant #RC852

P4E-V-AV SCHEME A

Engineer's Information:

Kimley»Horn

© 2022 KIMLEY-HORN AND ASSOCIATES, INC.

13455 Noel Road

Two Galleria Office Tower

Suite 700

Dallas, TX 75240

CONTACT: LAUREN NUFFER, P.E.

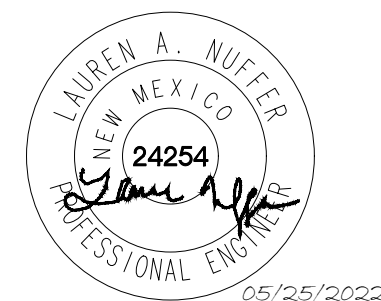
(972) 770-1300

LAUREN.NUFFER@KIMLEY-HORN.COM

LIZ WILLMOT, P.E.

LIZ.WILLMOT@KIMLEY-HORN.COM

Professional of Record:



Prototype : P4E-V-AV 2021- 2.0 RELEASE

Prototype Issue Date:	10.04.2021
Kitchen Issue Date:	08.02.2021
Design Bulletin Updates:	--
Date Issued:	Bulletin Number:
--	--

## 2ND BLDG. RESUBMITTAL

REVISIONS:

1	11/12/2021	80% REVIEW SET
2	11/30/2021	1ST BLDG SUBMITTAL
3	12/20/2021	1ST BLDG RESUBMITTAL
4	01/17/2022	2ND BLDG RESUBMITTAL
5		
6		
7		
8		
9		

Sheet Title:

EROSION CONTROL DETAILS

Date: 05.25.2022

Project Number: 090042000

Drawn By: LW/LN

Sheet Number:

C3.2

