

# CITY OF ALBUQUERQUE

*Planning Department*  
Alan Varela, Director



*Mayor Timothy M. Keller*

November 29, 2022

Justin Thor Simenson  
Isaacson & Arfman, Inc.  
128 Monroe St. NE  
Albuquerque, NM 87108

**Re: Gyro Shack**  
**4201 San Mateo Blvd. NE**  
**Traffic Circulation Layout**  
Engineer's Stamp 10-27-22 (G17-D024)

Dear Mr. Simenson,

The TCL submittal received 11-03-2022 is approved for Building Permit by Transportation. A copy of the stamped and signed plan will be needed for each of the building permit plans. Please keep the original to be used for certification of the site for final C.O. for Transportation.

PO Box 1293

Albuquerque

NM 87103

[www.cabq.gov](http://www.cabq.gov)

When the site construction is completed and an inspection for Certificate of Occupancy (C.O.) is requested, use the original City stamped approved TCL for certification. Redline any minor changes and adjustments that were made in the field. A NM registered architect or engineer must stamp, sign, and date the certification TCL along with indicating that the development was built in "substantial compliance" with the TCL. Submit this certification, the TCL, and a completed Drainage and Transportation Information Sheet to front counter personnel for log in and evaluation by Transportation.

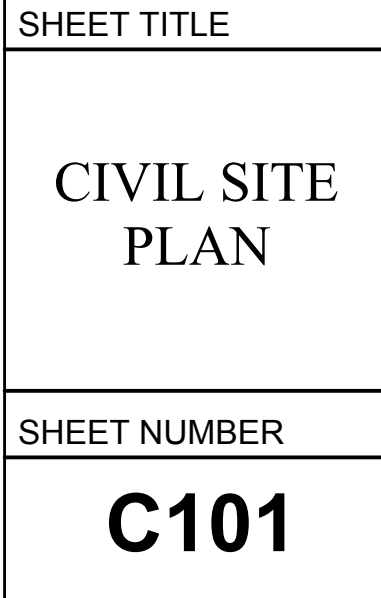
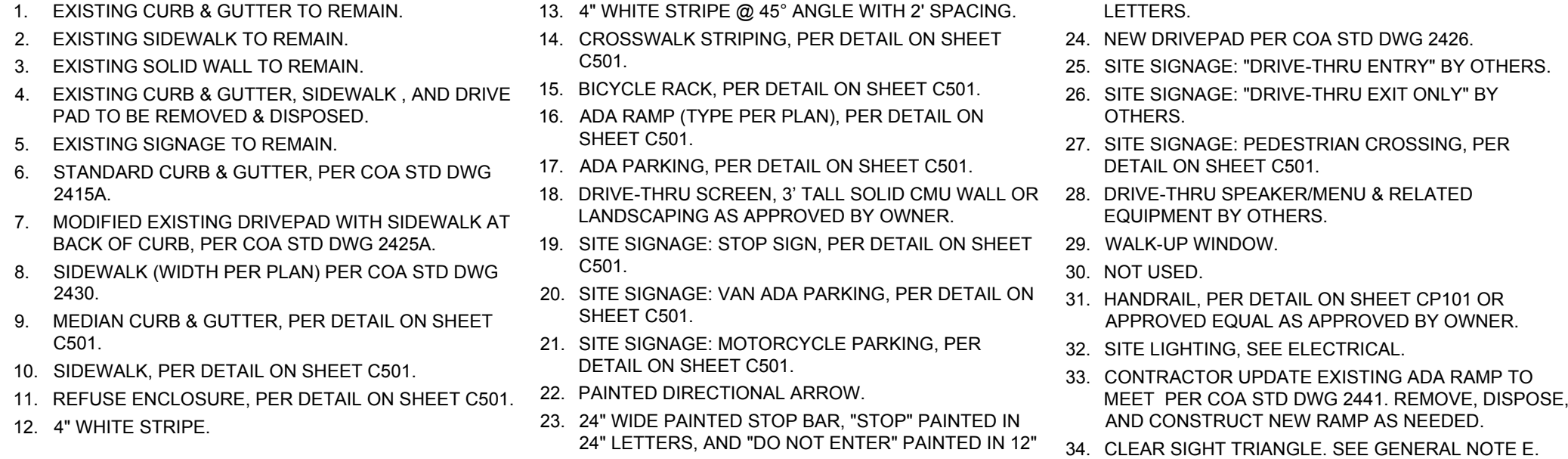
Once verification of certification is completed and approved, notification will be made to Building Safety to issue Final C.O. To confirm that a final C.O. has been issued, call Building Safety at 924-3690.

Sincerely,

Ernest Armijo, P.E.  
Principal Engineer, Planning Dept.  
Development Review Services

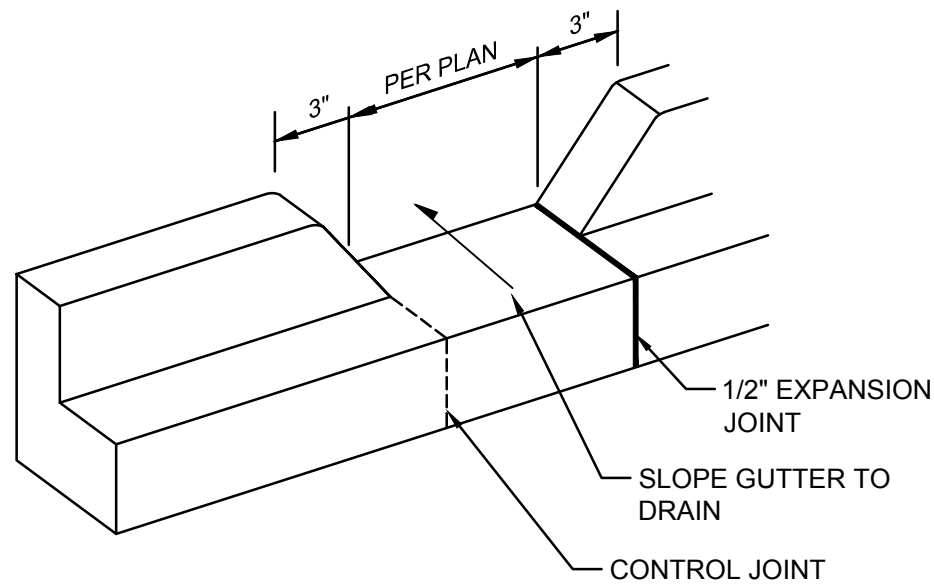
C: CO Clerk, File





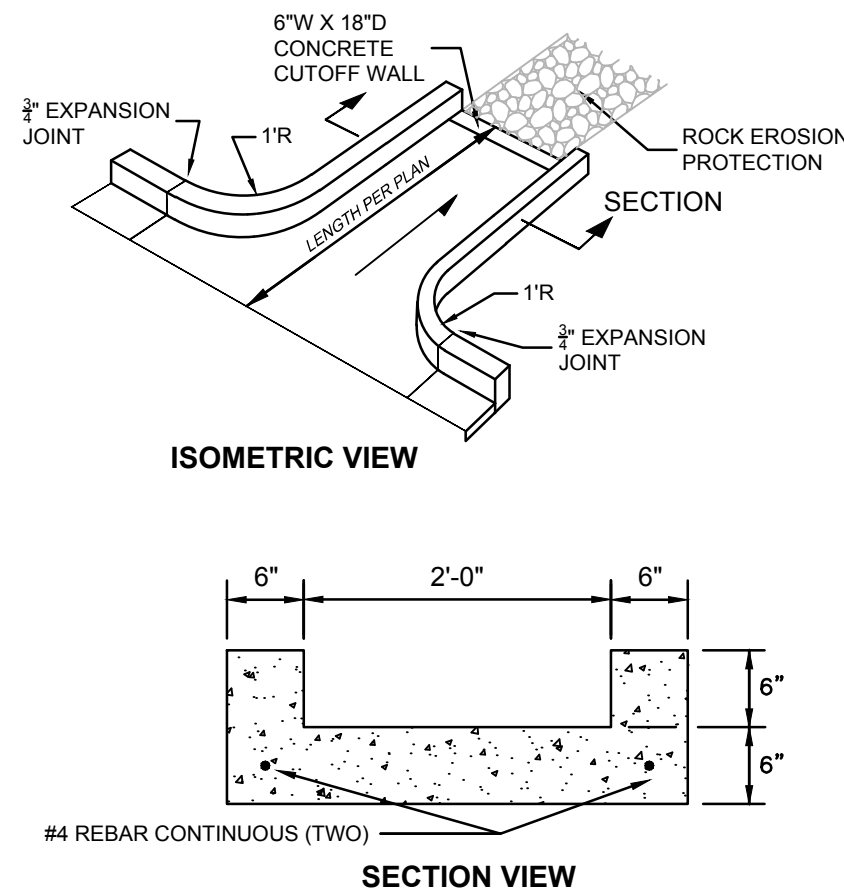


\\P:\PROJECTS\2020\20200202020\BUILDING PERMIT\PLAN\2020-02-01.dwg, JWB, 10/27/2022 2:00 PM



## CURB OPENING

SCALE: N.T.S.

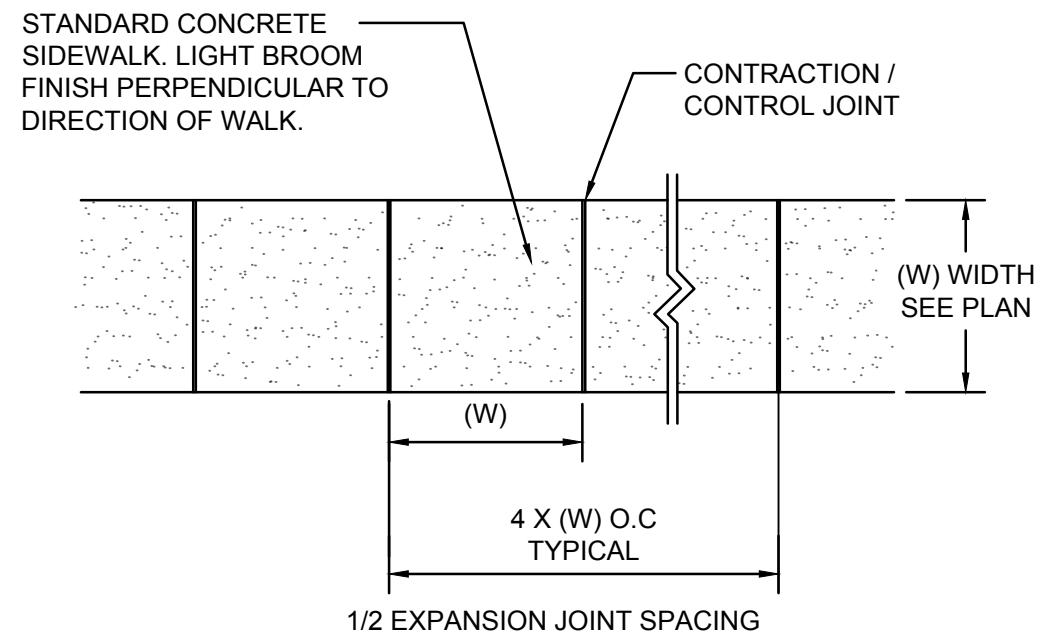


## GENERAL NOTES

- EDGES SHALL BE SHAPED WITH A 3/8" EDGING TOOL.
- SILICON SEALED CONSTRUCTION CONTROL JOINTS AT 6' O.C.
- 1/2" SILICON SEALED EXPANSION JOINTS 24' O.C. AND AT CURB RETURNS.

## 'U' SHAPED CONC. CHANNEL

SCALE: N.T.S.



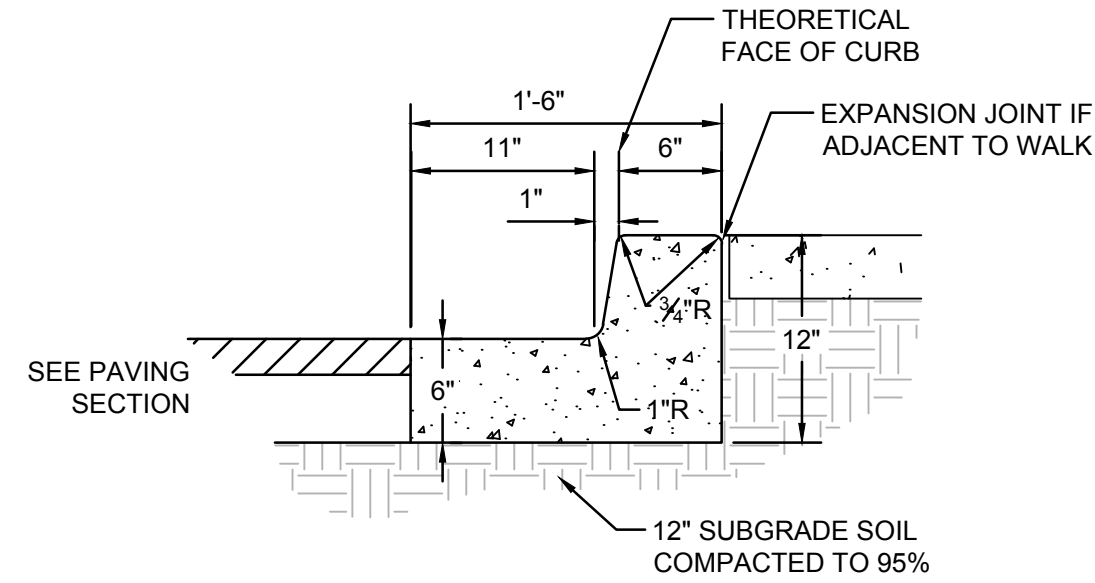
## GENERAL NOTES

- 4000 PSI COMPRESSIVE STRENGTH CONCRETE
- SEE CONCRETE JOINTS DETAIL
- FINISHED EDGE OF ASPHALT PAVING TO BE 1/2" ABOVE EDGE OF CONCRETE (TYP).
- 3/8" RADII AT ALL EXPOSED EDGES.

## SIDEWALK

BROOM FINISH

SCALE: N.T.S.



## GENERAL NOTES

- REQUIRES FULL FORM ON ALL FACES.
- CONTRACTION / CONTROL JOINTS @ 6' O.C. MAX.
- EXPANSION JOINTS @ 48' O.C., CURB RETURNS AND EACH SIDE OF DRIVES.
- EDGES NOT SPECIFICALLY DIMENSIONED SHALL BE EDGED WITH A 3/8" RADII.

## MEDIAN CURB AND GUTTER

6" WIDE THEORETICAL FACE OF CURB

SCALE: N.T.S.

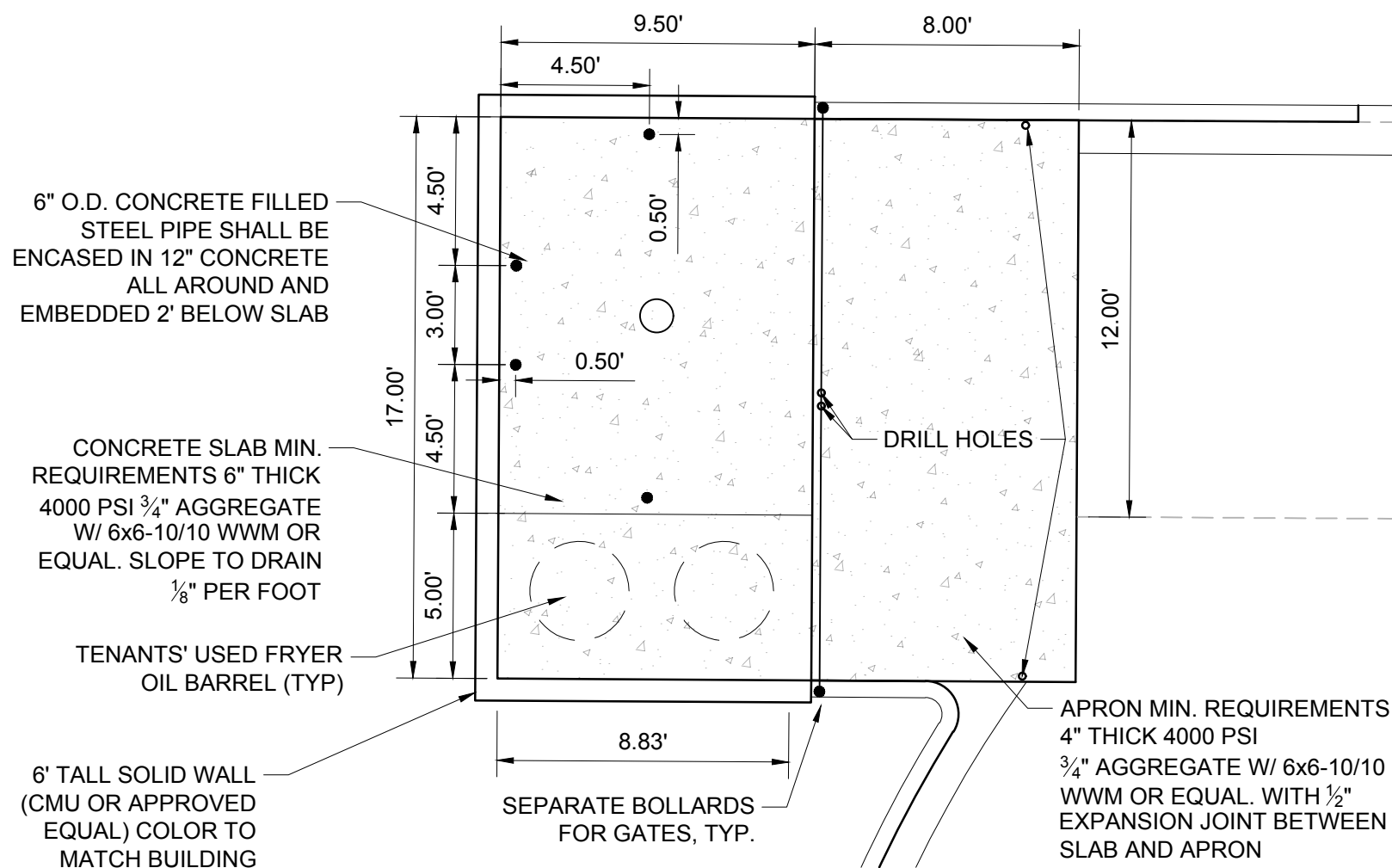
TRAFFIC CIRCULATION  
LAYOUT APPROVED

Ernest Armijs  
Signed  
11/29/2022  
Date

## ACCESSIBLE RAMPS, WALKS & PARKING

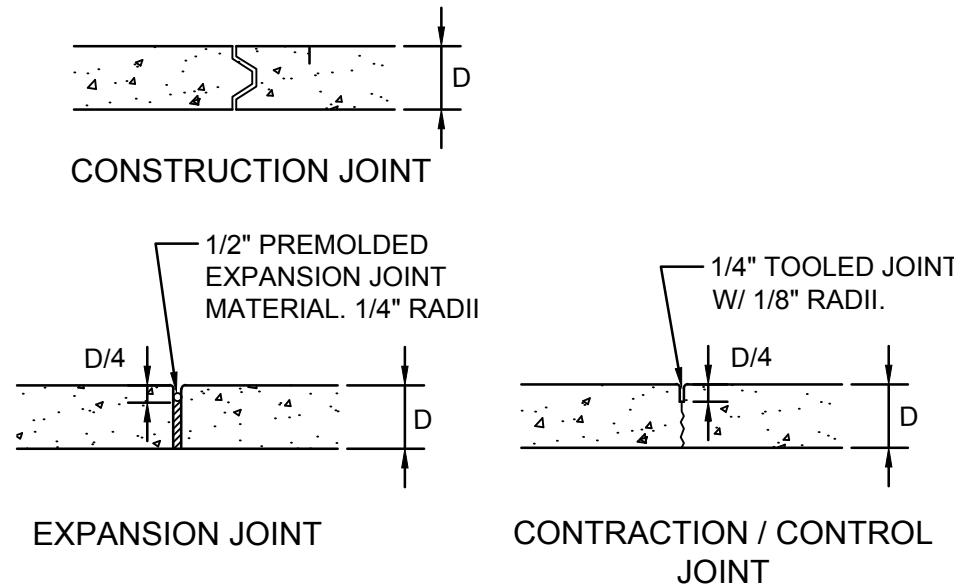
SIDEWALK(S) AND RAMP(S): TARGET CROSS SLOPE = 1% TO 1.5%. CROSS SLOPE SHALL NOT EXCEED 2%.  
ACCESSIBLE RAMP(S): TARGET LONGITUDINAL SLOPE = 7% LONGITUDINAL SLOPE SHALL NOT EXCEED 12:1 (8.3%).  
ACCESSIBLE PARKING: TARGET SLOPE = 1% TO 1.5%. SHALL NOT EXCEED 2% SLOPE IN ANY DIRECTION

EXISTING SIDEWALKS SHALL BE IN SUBSTANTIAL COMPLIANCE WITH ADA STANDARDS OR IT SHALL BE REPAIRED OR REPLACED.



## REFUSE ENCLOSURE DETAIL

SCALE: 1"=5'

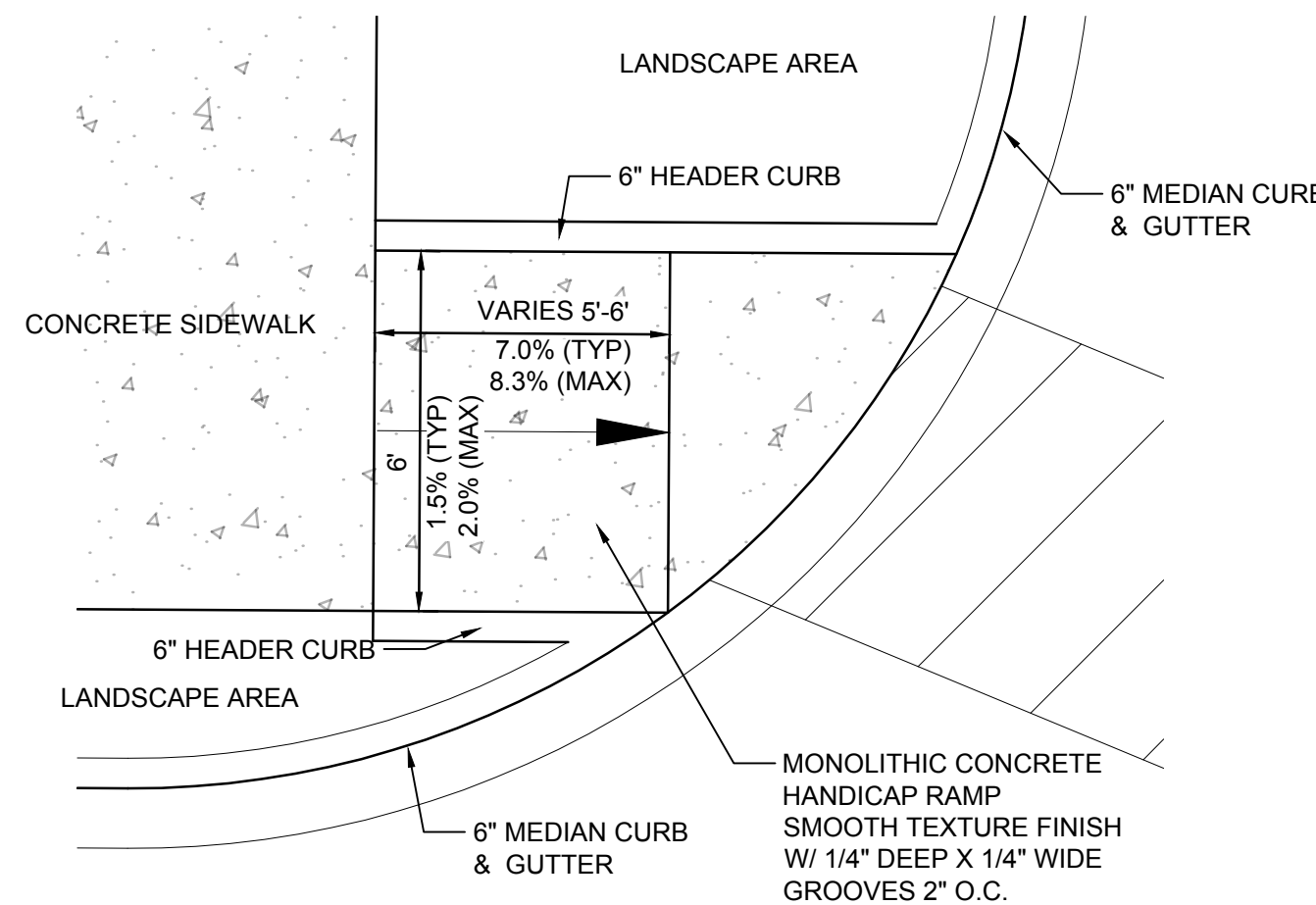


## GENERAL NOTES

- ODD-SHAPED AREAS OF PAVEMENT SHOULD BE AVOIDED TO MINIMIZE RANDOM CRACKING
- LONGITUDINAL JOINT SPACING SHALL NOT EXCEED 12.5'
- TRANSVERSE JOINT SPACING SHALL BE AT REGULAR INTERVALS OF 15' OR LESS
- OFFSETS AT RADIUS POINTS SHALL BE AT LEAST 1.5' WIDE

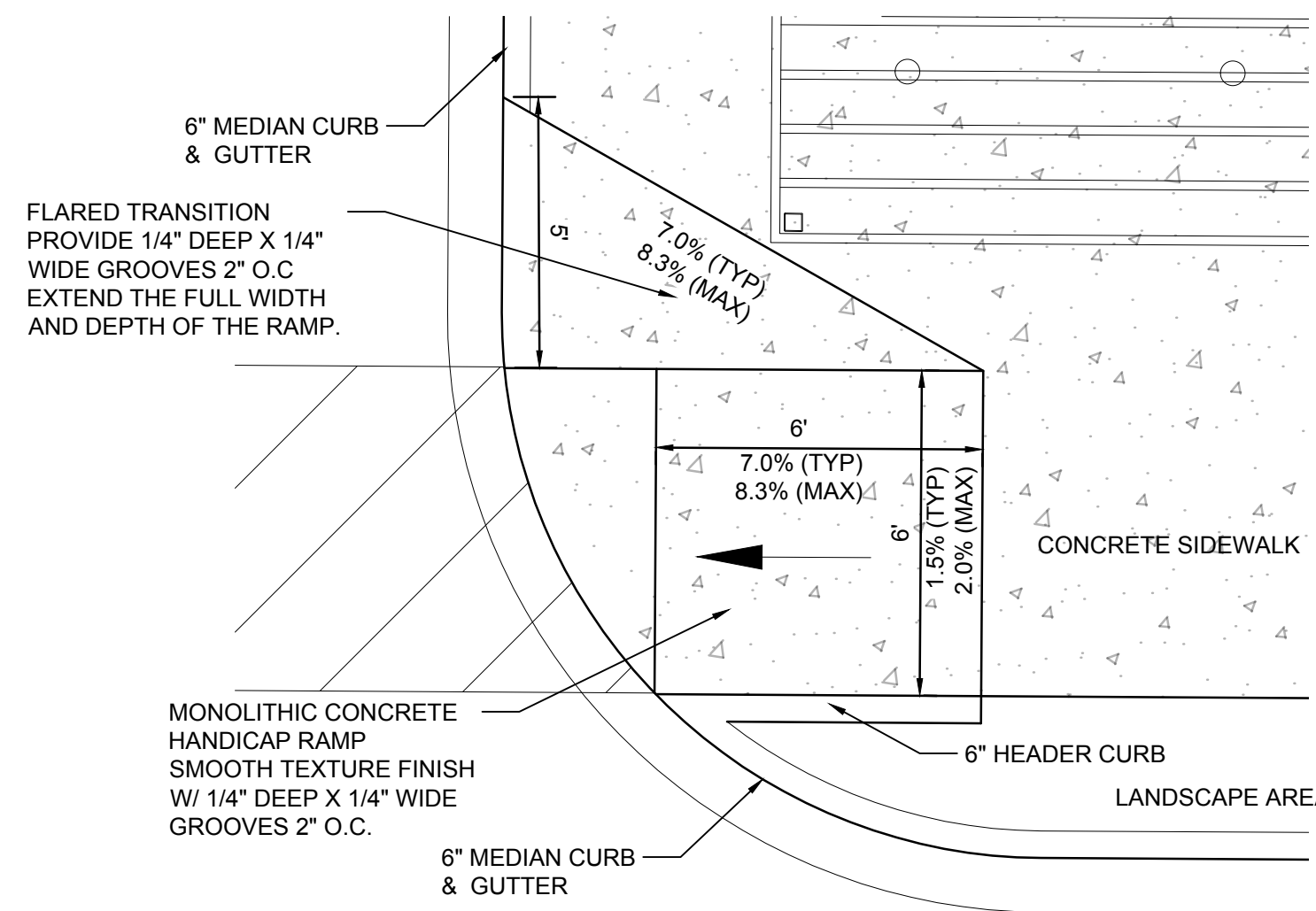
## CONCRETE JOINTS

SCALE: N.T.S.



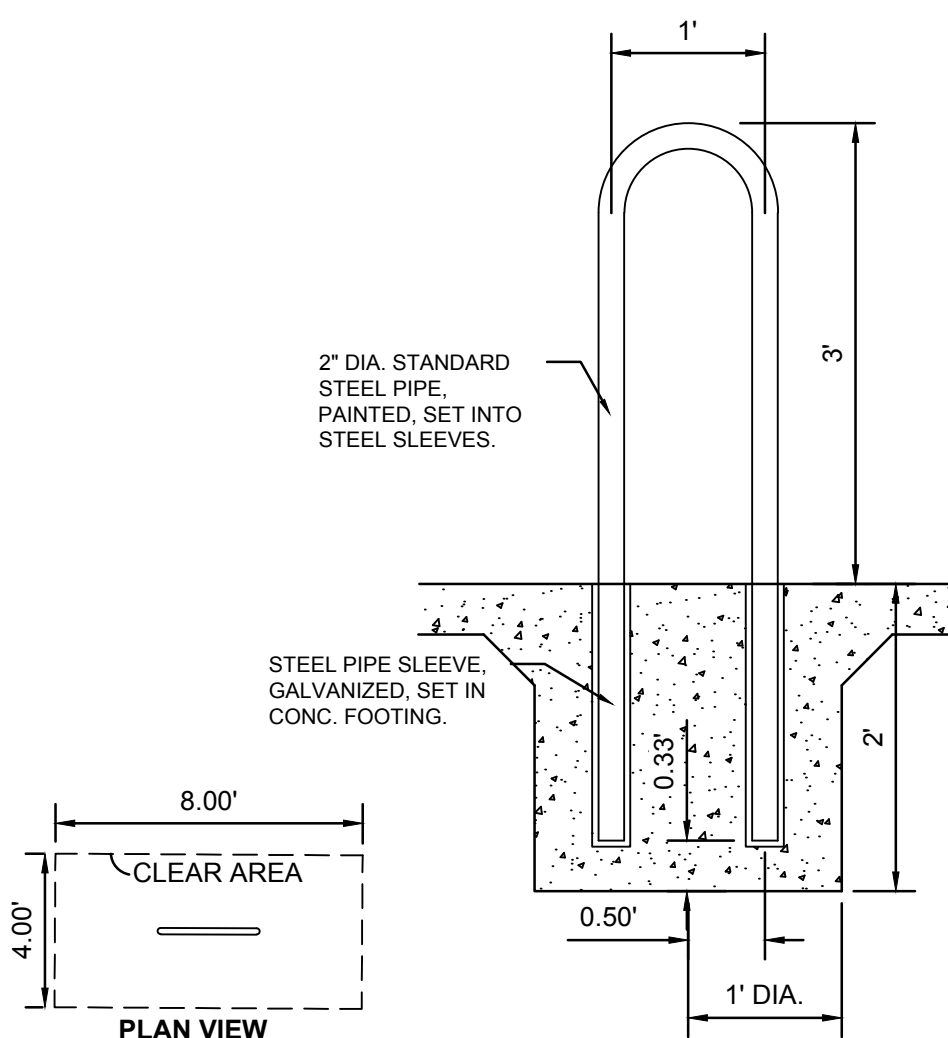
## TYPE 'A' ADA RAMP DETAIL

SCALE: N.T.S.



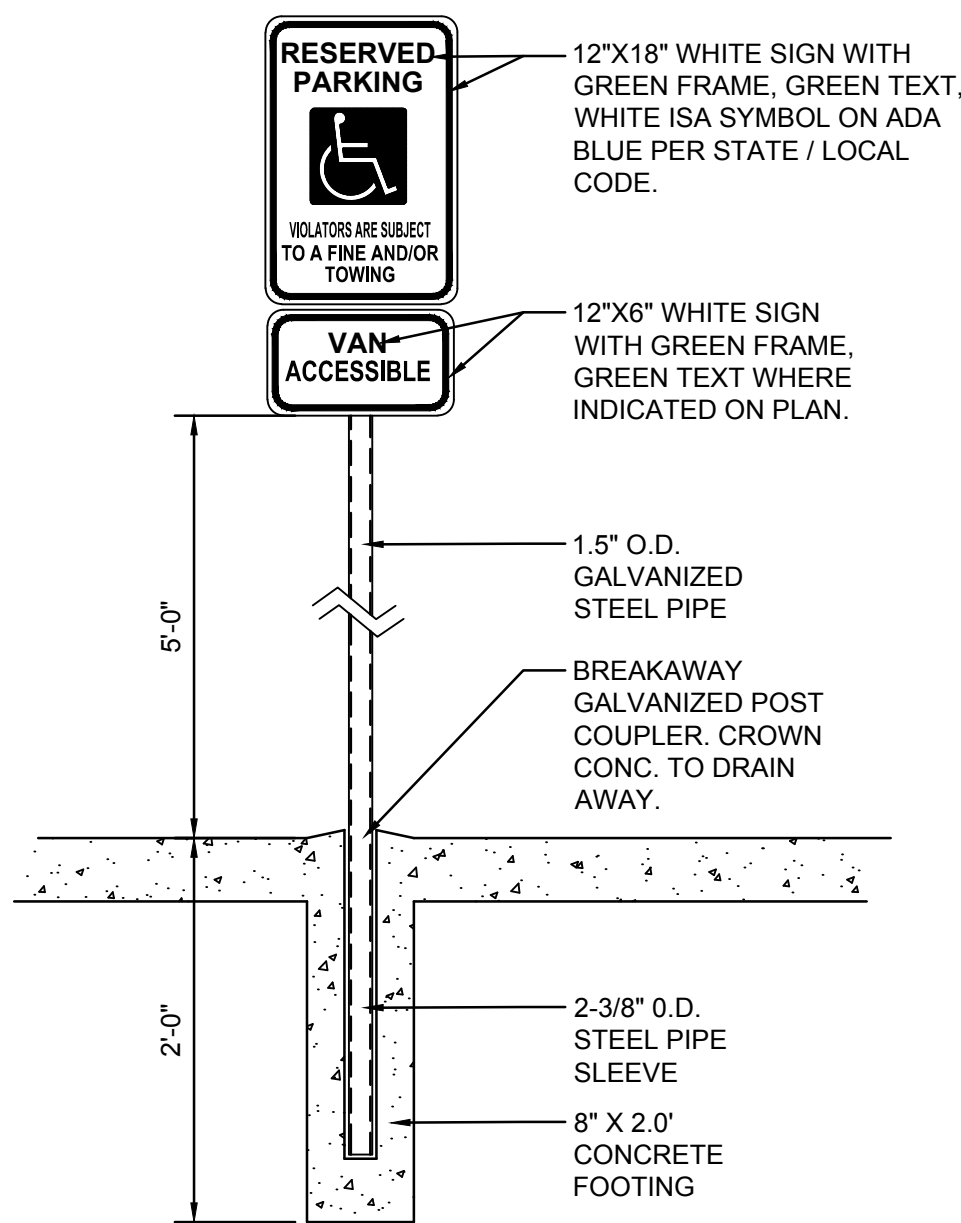
## TYPE 'B' ADA RAMP DETAIL

SCALE: N.T.S.



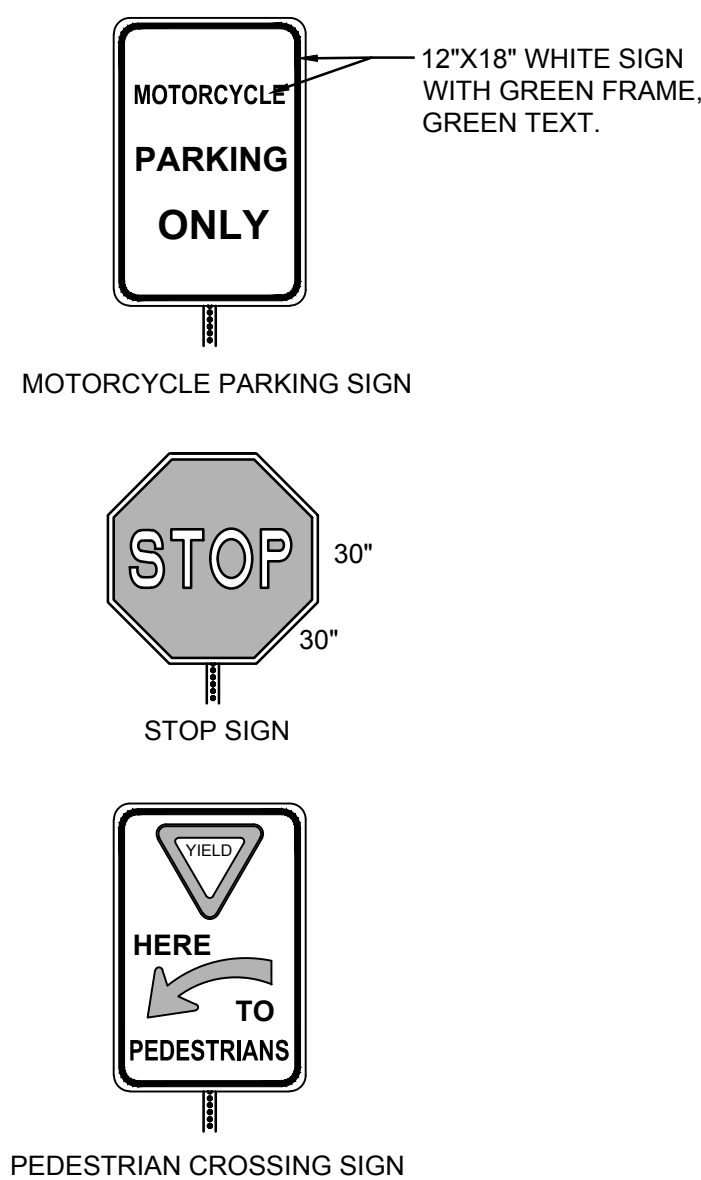
## BICYCLE RACK

SCALE: N.T.S.



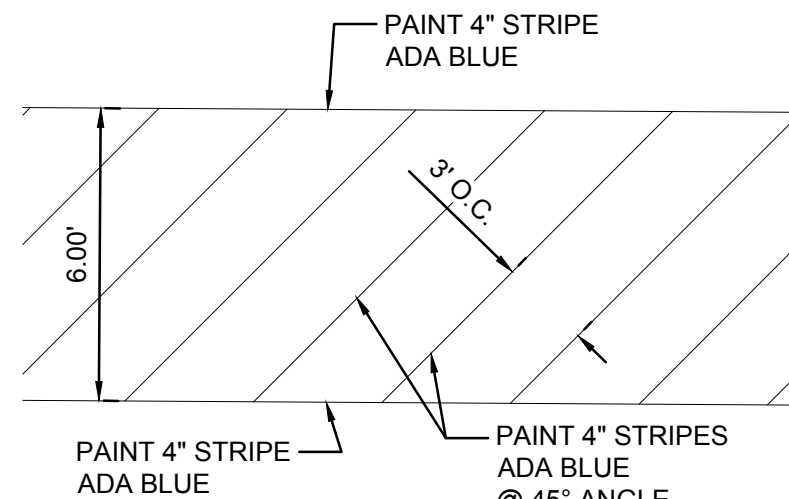
## SIGNAGE

SCALE: N.T.S.



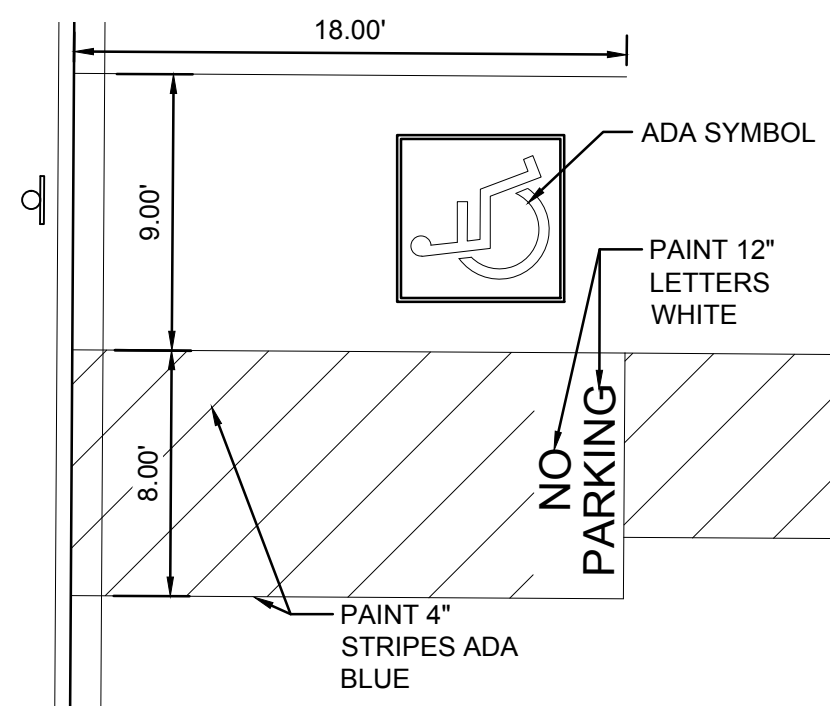
## CROSSWALK STRIPING DETAIL

SCALE: N.T.S.



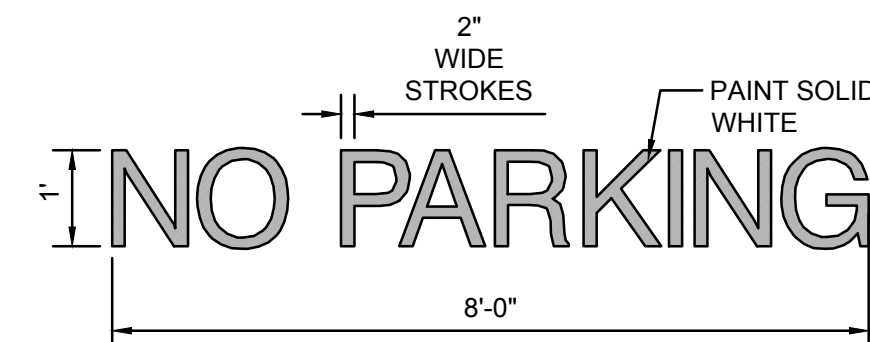
## CROSSWALK STRIPING DETAIL

SCALE: N.T.S.



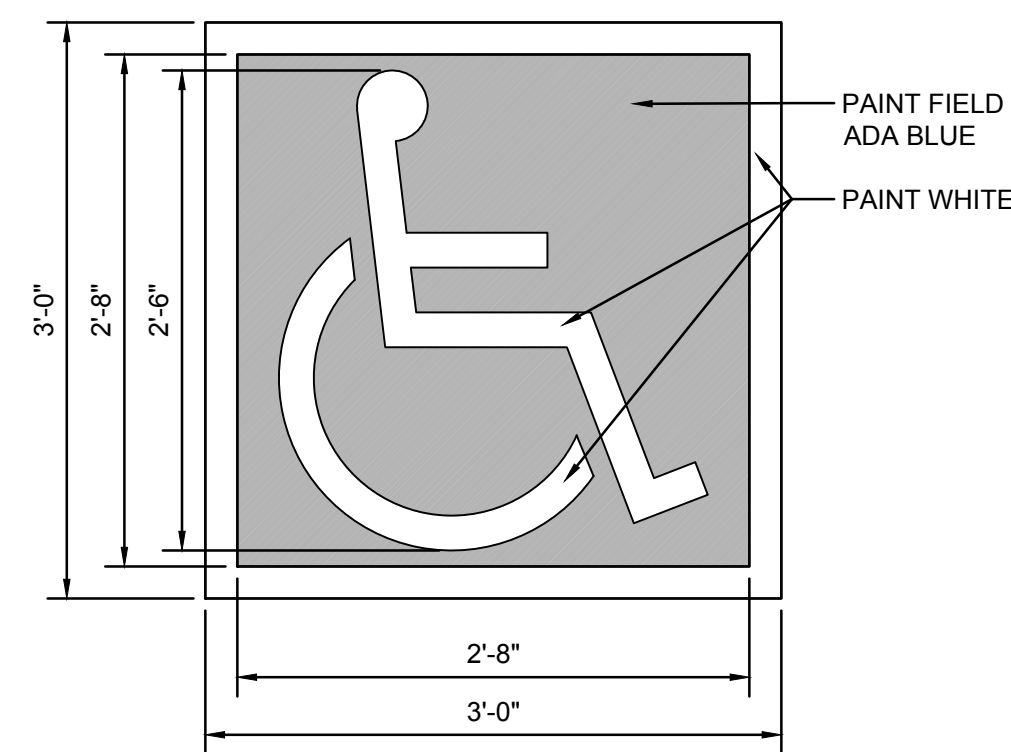
## ADA PARKING DETAIL

SCALE: N.T.S.



## PAINTED 'NO PARKING'

SCALE: N.T.S.



## ACCESSIBILITY SYMBOL

SCALE: N.T.S.



