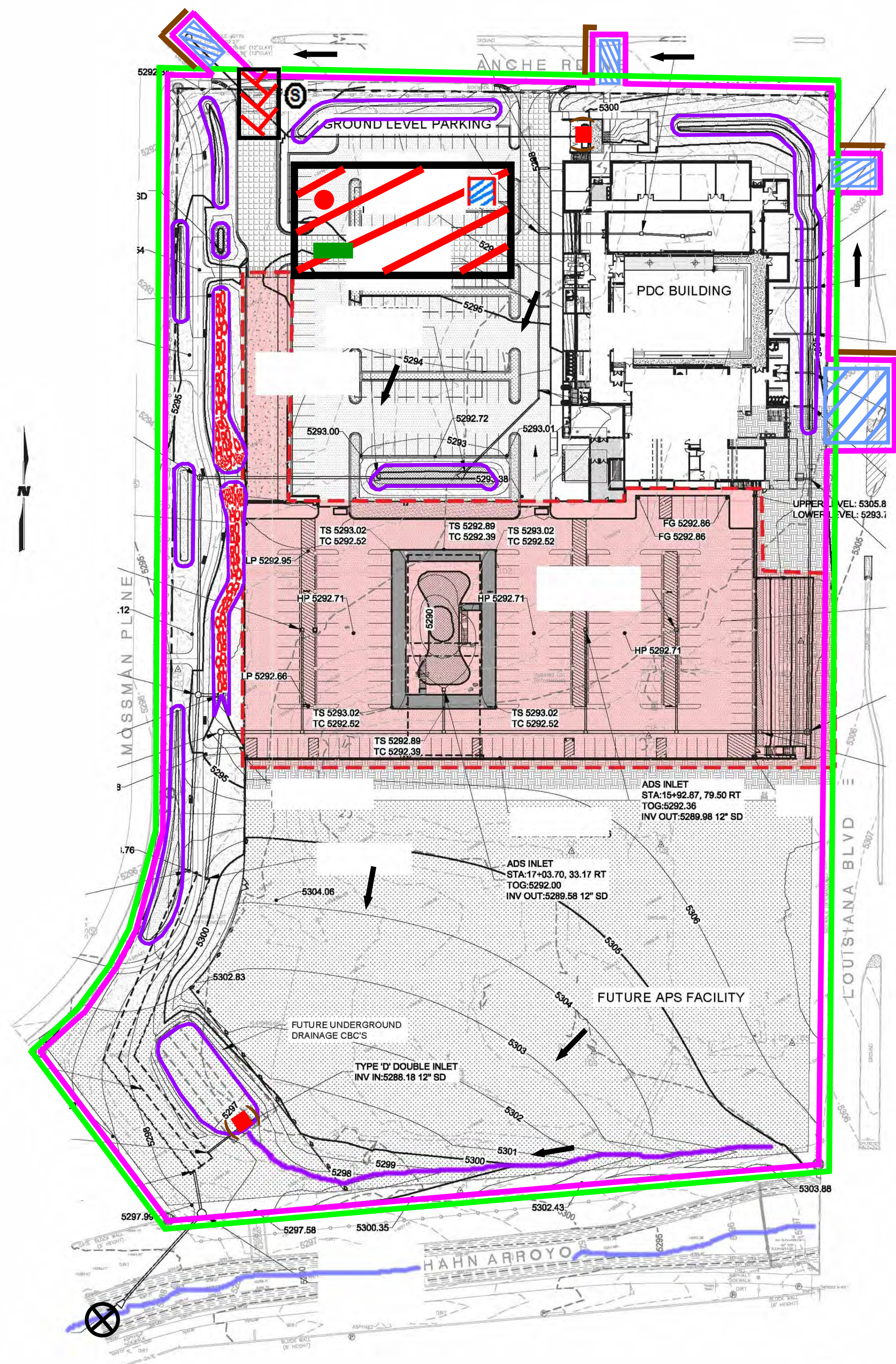
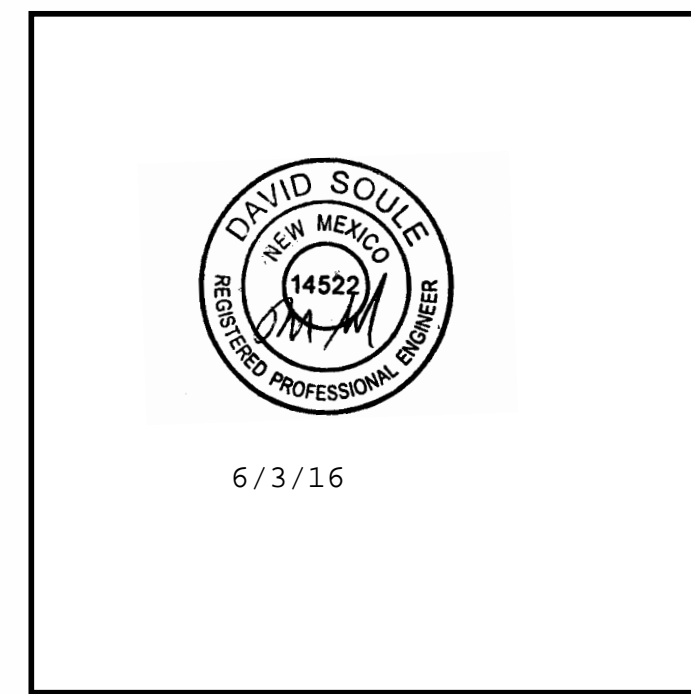


# Engineer Stamp



**Note:**

- When doing work in the City ROW (sidewalk, storm drain, drive pads) avoid dirt from getting into the street. If dirt is present in the street, the street should be swept every few days or the same day if rain is imminent.
- If stock piling dirt in the street and rain is forecasted, place wattles along the down slope side of the pile.

### Legend

#### Erosion Sediment Control Plan

- Project Perimeter & Disturbed Area
- Silt Fence
- Retention Pond
- Pre Flow & Post Flow
- Outfall
- Posting Sign
- Rip Rap
- Staging Area
- Stabilized Construction Entrance
- Trash Receptacle
- Chemical Toilet
- Concrete Washout
- Check Dam
- Inlet Protection
- Proposed Grate Inlet with protection
- Swale
- Mulch Socks
- Offsite Work Area

**Montgomery Complex Development Center**

Receiving Waters and Critical Habitat: Rio Grade located 6.5 miles to the West.

Impairments: E. coli, Dissolved Oxygen, PCBs in Fish Tissue, Water Temperature

Grade: Before and After 1%