

# CITY OF ALBUQUERQUE

*Planning Department*  
Alan Varela, Director



*Mayor Timothy M. Keller*

February 20, 2024

Ronald Bohannon, P.E.  
Tierra West, LLC  
5571 Midway Park Place NE  
Albuquerque, NM 87109

**RE: The Wymont**  
**4315 Wyoming Blvd NE**  
**Engineer's Certification Date: 02/07/24**  
**Engineer's Stamp Date: 01/27/22**  
**Hydrology File: G19D004**  
**CPN: 568482**

Dear Mr. Bohannon:

PO Box 1293

Based on the Certification received 02/08/24 and site visit on 02/16/24, this certification is approved in support of ROFG/SIA by Hydrology.

Albuquerque

If you have any questions, please contact me at 924-3995 or [rbrissette@cabq.gov](mailto:rbrissette@cabq.gov).

Sincerely,

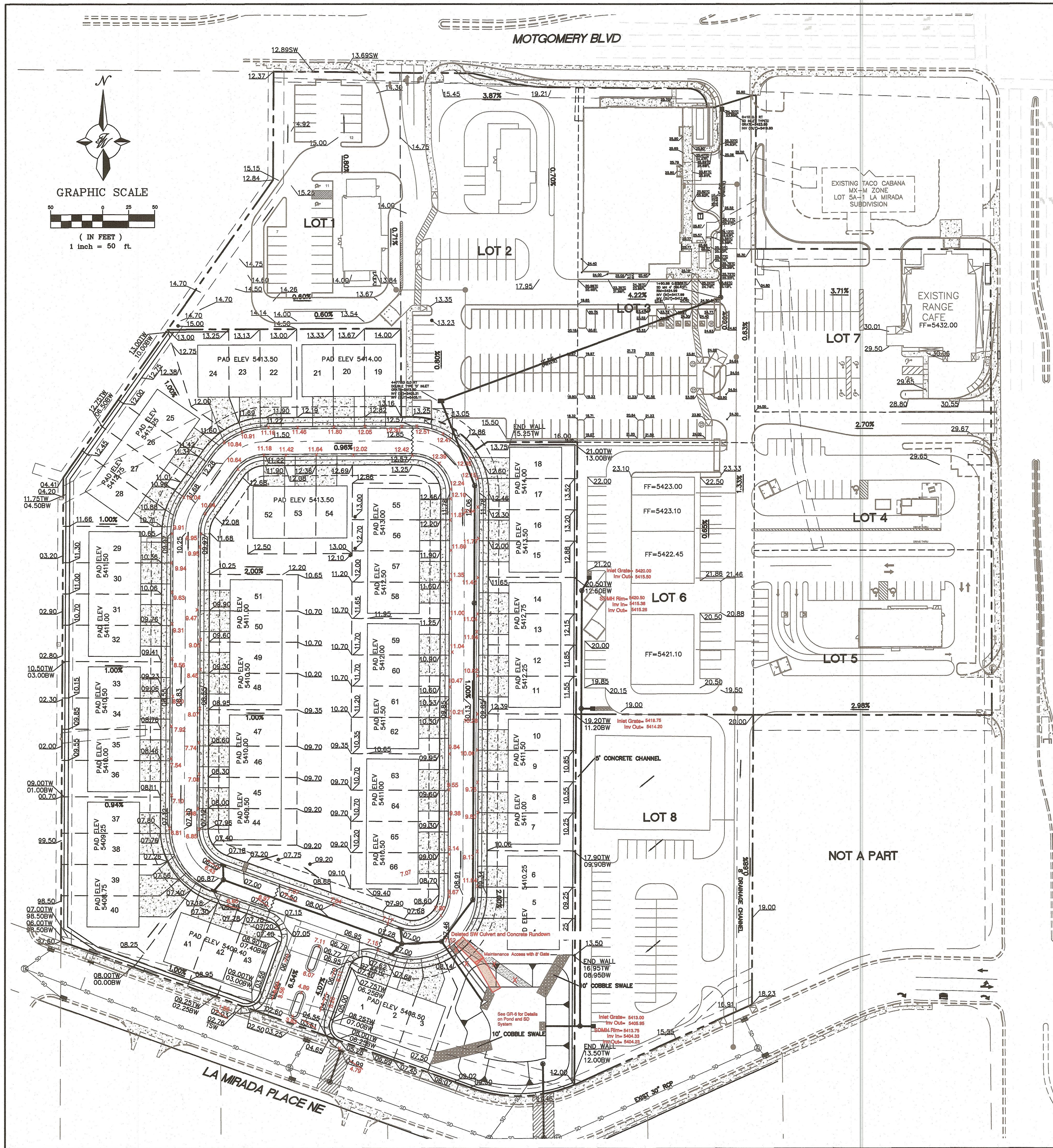
NM 87103

[www.cabq.gov](http://www.cabq.gov)

Renée C. Brissette, P.E. CFM  
Senior Engineer, Hydrology  
Planning Department







LEGEND

- CURB & GUTTER
- BOUNDARY LINE
- BUILDING
- PROPERTY LINE
- EXISTING CURB & GUTTER
- PROPOSED HYDRANT
- NEW SD MH
- NEW CUR INLET TYPE 'C'
- EXISTING SAS MH
- EXISTING GATE VALVE
- EXISTING WATERLINE
- EXISTING SAS
- RETAINING WALL
- WATER BLOCK

NOTICE TO CONTRACTORS

- AN EXCAVATION/CONSTRUCTION PERMIT WILL BE REQUIRED BEFORE BEGINNING ANY WORK WITHIN CITY RIGHT-OF-WAY.
- ALL WORK DETAILED ON THESE PLANS TO BE PERFORMED, EXCEPT AS OTHERWISE STATED OR PROVIDED HEREON, SHALL BE CONSTRUCTED IN ACCORDANCE WITH CITY OF ALBUQUERQUE INTERIM STANDARD SPECIFICATIONS FOR PUBLIC WORKS CONSTRUCTION, 1985.
- TWO WORKING DAYS PRIOR TO ANY EXCAVATION, CONTRACTOR MUST CONTACT LINE LOCATING SERVICE, 765-1234, FOR LOCATION OF EXISTING UTILITIES.
- PRIOR TO CONSTRUCTION, THE CONTRACTOR SHALL EXCAVATE AND VERIFY THE HORIZONTAL AND VERTICAL LOCATIONS OF ALL CONNECTIONS. SHOULD A CONFLICT EXIST, THE CONTRACTOR SHALL NOTIFY THE ENGINEER SO THAT THE CONFLICT CAN BE RESOLVED WITH A MINIMUM AMOUNT OF DELAY.
- BACKFILL COMPACTION SHALL BE ACCORDING TO TRAFFIC/STREET USE.
- MAINTENANCE OF THESE FACILITIES SHALL BE THE RESPONSIBILITY OF THE OWNER OF THE PROPERTY SERVED.
- WORK ON ARTERIAL STREETS SHALL BE PERFORMED ON A 24-HOUR BASIS.

EROSION CONTROL NOTES

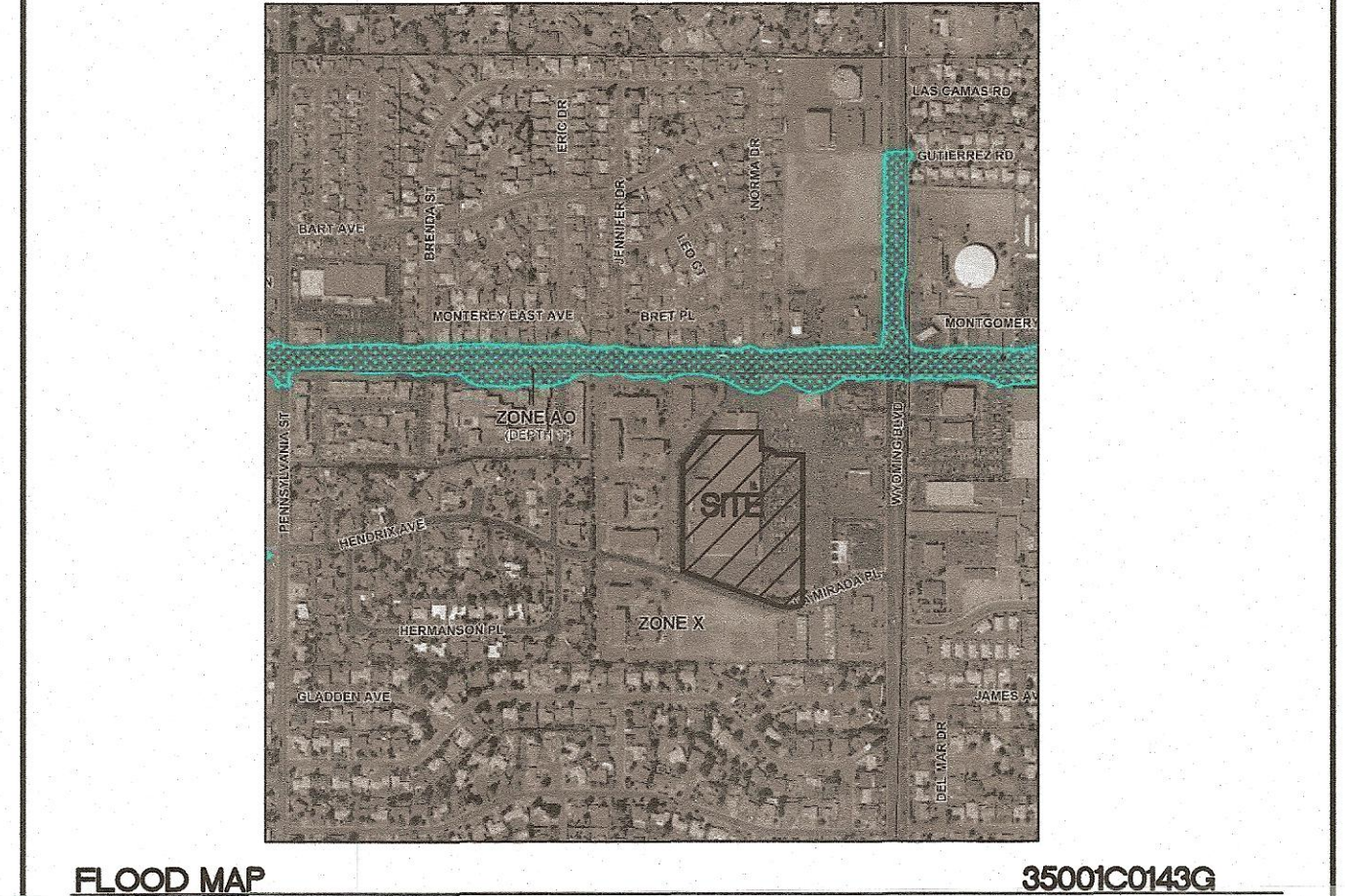
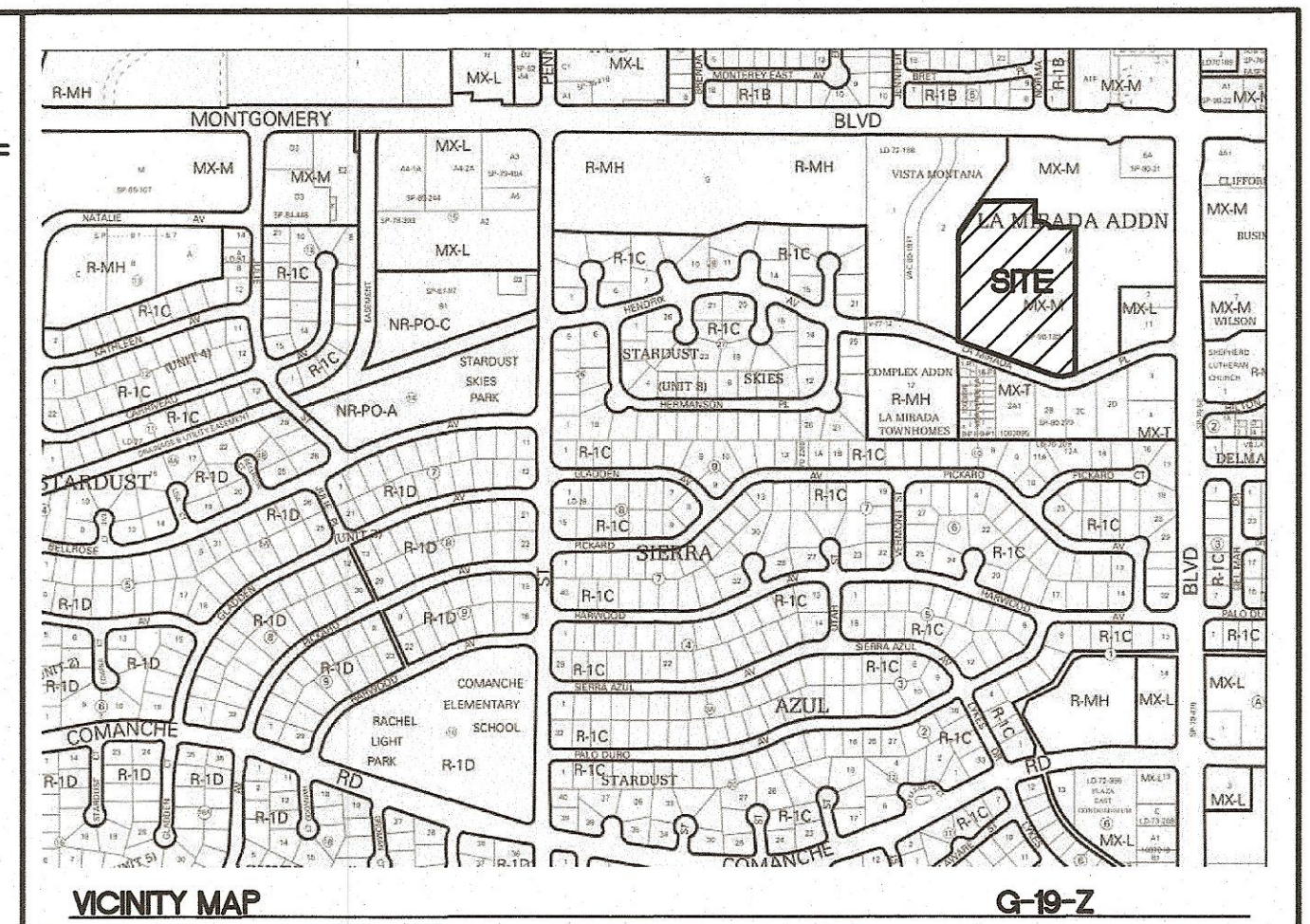
- CONTRACTOR IS RESPONSIBLE FOR OBTAINING A TOPSOIL DISTURBANCE PERMIT PRIOR TO BEGINNING WORK.
- CONTRACTOR IS RESPONSIBLE FOR MAINTAINING RUN-OFF ON SITE DURING CONSTRUCTION.
- CONTRACTOR IS RESPONSIBLE FOR CLEANING ALL SEDIMENT THAT GETS INTO EXISTING RIGHT-OF-WAY.
- REPAIR OF DAMAGED FACILITIES AND CLEANUP OF SEDIMENT ACCUMULATIONS ON ADJACENT PROPERTIES AND IN PUBLIC FACILITIES IS THE RESPONSIBILITY OF THE CONTRACTOR.
- ALL EXPOSED EARTH SURFACES MUST BE PROTECTED FROM WIND AND WATER EROSION PRIOR TO FINAL (CITY) ACCEPTANCE OF ANY PROJECT.
- ALL SLOPES NOT STABILIZED AT THE END OF THE PROJECT SHALL BE STABILIZED IN ACCORDANCE WITH COA SPECS OR 3" GRAVEL.

NOTE - ADD 5400 TO ALL ELEVATIONS

ALL SPOT ELEVATIONS ARE TO FLOWLINE UNLESS OTHERWISE SPECIFIED

CAUTION

ALL EXISTING UTILITIES SHOWN WERE OBTAINED FROM RESEARCH, AS-BUILTS, SURVEYS OR INFORMATION PROVIDED BY OTHERS. IT SHALL BE THE SOLE RESPONSIBILITY OF THE CONTRACTOR TO CONDUCT ALL NECESSARY FIELD INVESTIGATIONS PRIOR TO AND INCLUDING ANY EXCAVATION, TO DETERMINE THE ACTUAL LOCATION OF UTILITIES AND OTHER IMPROVEMENTS, PRIOR TO STARTING THE WORK. ANY CHANGES FROM THIS PLAN SHALL BE COORDINATED WITH AND APPROVED BY THE ENGINEER.



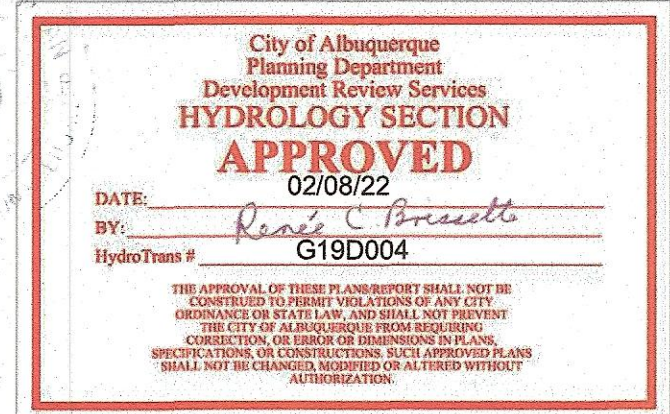
DRAINAGE CERTIFICATION WITH SURVEY WORK DONE BY PROFESSIONAL SURVEYOR

I, RONALD R. BOHANNAN, NMPE # 7868, OF THE FIRM, TIERRA WEST, LLC, HEREBY CERTIFY THAT THIS PROJECT HAS BEEN GRADED AND WILL DRAIN IN SUBSTANTIAL COMPLIANCE WITH AND IN ACCORDANCE WITH THE DESIGN INTENT OF THE APPROVED PLAN DATED 1-27-2022. THE RECORD INFORMATION EDITED ONTO THE ORIGINAL DESIGN DOCUMENT HAS BEEN OBTAINED BY BRIAN MARTINEZ, NMPS #18374, OF THE FIRM, CARTESIAN SURVEYS, INC. I FURTHER CERTIFY THAT I HAVE PERSONALLY VISITED THE PROJECT SITE ON 2/16/22 AND HAVE DETERMINED BY VISUAL INSPECTION THAT THE SURVEY DATA PROVIDED IS REPRESENTATIVE OF ACTUAL SITE CONDITIONS AND IS TRUE AND CORRECT TO THE BEST OF MY KNOWLEDGE AND BELIEF. THIS CERTIFICATION IS SUBMITTED IN SUPPORT OF A REQUEST FOR RELEASE OF FINANCIAL GUARANTEE (ROFG).

EXCEPTIONS:  
NONE TAKEN

THE RECORD INFORMATION PRESENTED HEREON IS NOT NECESSARILY COMPLETE AND INTENDED ONLY TO VERY SUBSTANTIAL COMPLIANCE OF THE GRADING AND DRAINAGE ASPECTS OF THIS PROJECT. THOSE RELYING ON THIS RECORD DOCUMENT ARE ADVISED TO OBTAIN INDEPENDENT VERIFICATION OF ITS ACCURACY BEFORE USING IT FOR ANY OTHER PURPOSES.

RONALD R. BOHANNAN  
DATE: 02/08/22  
PROFESSIONAL SURVEYOR



ENGINEER'S SEAL RONALD R. BOHANNAN NEW MEXICO PROFESSIONAL ENGINEER 7868 1-27-2022 RONALD R. BOHANNAN P.E. #7868	THE WYMONT ALBUQUERQUE, NM MASTER GRADING PLAN	DRAWN BY pm
		DATE 1-27-2022
TERRA WEST, LLC 5571 MIDWAY PARK PL. NE ALBUQUERQUE, NEW MEXICO 87109 (505) 858-3100 www.tierwestllc.com	JOB # 2021008	DRAWING 2021008-GR
		SHEET # GR-1



# MATCH LINE (SEE SHEET GR-5)

DRAINAGE CERTIFICATION WITH SURVEY WORK DONE BY PROFESSIONAL SURVEYOR

I, RONALD R. BOHANNAN, NMPE # 7868, OF THE FIRM, TIERRA WEST LLC, HEREBY CERTIFY THAT THIS PROJECT HAS BEEN GRADED AND WILL DRAIN IN SUBSTANTIAL COMPLIANCE WITH AND IN ACCORDANCE WITH THE DESIGN INTENT OF THE APPROVED PLAN DATED 1-27-2022. THE RECORD INFORMATION EDITED ONTO THE ORIGINAL DESIGN DOCUMENT HAS BEEN OBTAINED BY BRIAN MARTINEZ, NMPS #13374, OF THE FIRM, GARTESIAN SURVEYS INC. I FURTHER CERTIFY THAT I HAVE PERSONALLY VISITED THE PROJECT SITE ON 2/2/22 AND HAVE DETERMINED BY VISUAL INSPECTION THAT THE SURVEY DATA PROVIDED IS REPRESENTATIVE OF ACTUAL SITE CONDITIONS AND IS TRUE AND CORRECT TO THE BEST OF MY KNOWLEDGE AND BELIEF. THIS CERTIFICATION IS SUBMITTED IN SUPPORT OF A REQUEST FOR RELEASE OF FINANCIAL GUARANTEE (ROFG).

EXCEPTIONS:  
NONE TAKEN

THE RECORD INFORMATION PRESENTED HEREON IS NOT NECESSARILY COMPLETE AND INTENDED ONLY TO VERY SUBSTANTIAL COMPLIANCE OF THE GRADING AND DRAINAGE ASPECTS OF THIS PROJECT. THOSE RELYING ON THIS RECORD DOCUMENT ARE ADVISED TO OBTAIN INDEPENDENT VERIFICATION OF ITS ACCURACY BEFORE USING IT FOR ANY OTHER PURPOSE.

RONALD R. BOHANNAN NMPE # 7868



(SEAL)

TURNED BLOCK FOR DRAINAGE

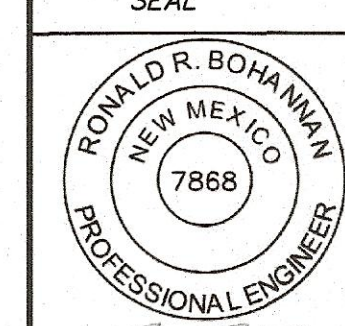
71+28.69 156.71 RT  
SD MH TYPE 'C' RIM=5412.50 5412.50  
(IN)=5404.43 N INV (IN)=5406.40 E INV  
(OUT)=5404.33 W 5407.92

71+30.44 166.89 RT  
SINGLE TYPE 'D' INLET  
GRATE=5413.00 5412.25  
INV (OUT)=5404.50 5408.00

SEE NOTE 5 FOR POND  
SIDE SLOPE TREATMENT

OUTFALL STRUCTURE  
INV=5402.25 5402.10  
SEE DETAIL SHEET GR-8  
Top of Standpipes 5405.00

ENGINEER'S  
SEAL



1-27-2022  
RONALD R. BOHANNAN  
P.E. #7868

THE WYMONT  
ALBUQUERQUE, NM  
STORM SEWER PLAN

TIERRA WEST, LLC  
5571 MIDWAY PARK PL NE  
ALBUQUERQUE, NEW MEXICO 87109  
(505) 858-3100  
www.tierrawestllc.com

DRAWN BY  
pm

DATE  
1-27-2022

DRAWING  
2021008-GR

SHEET #  
GR-4

JOB #  
2021008

- NOTE**
- ALL TYPE 'C' INLET PER COA STD DWG 2205
  - ALL TYPE 'C' MANHOLES PER COA STD DWG 2101
  - POND SIDE SLOPES TO BE FRACTURED COBBLE WITH NATIVE SEEDING
  - ALL STORM SEWER SHOWN ON THIS SHEET TO BE PRIVATELY MAINTAINED BY HOA
  - SIDE SLOPES ON THE WATER QUALITY POND NEED TO BE STABILIZED WITH NATIVE GRASS SEED (PER CITY SPEC 1012) WITH AGGREGAT MULCH OR EQUAL (MUST SATISFY THE "FINAL STABILIZATION CRITERIA" CGP 2.2.14.B)
  - SEE SHEET GR-5 FOR LA MIRADA PLACE STORM SEWER IMPROVEMENTS TO BE COMPLETED UNDER CITY WORK ORDER #568482

## VOLUME CALCULATIONS POND

Ab - Bottom Of The Pond Surface Area  
At - Top Of The Pond Surface Area  
D - Water Depth  
Dt - Total Pond Depth  
C - Change In Surface Area / Water Depth

$$\text{Volume} = \text{Ab} \cdot \text{D} + 0.5 \cdot \text{C} \cdot \text{D}^2$$

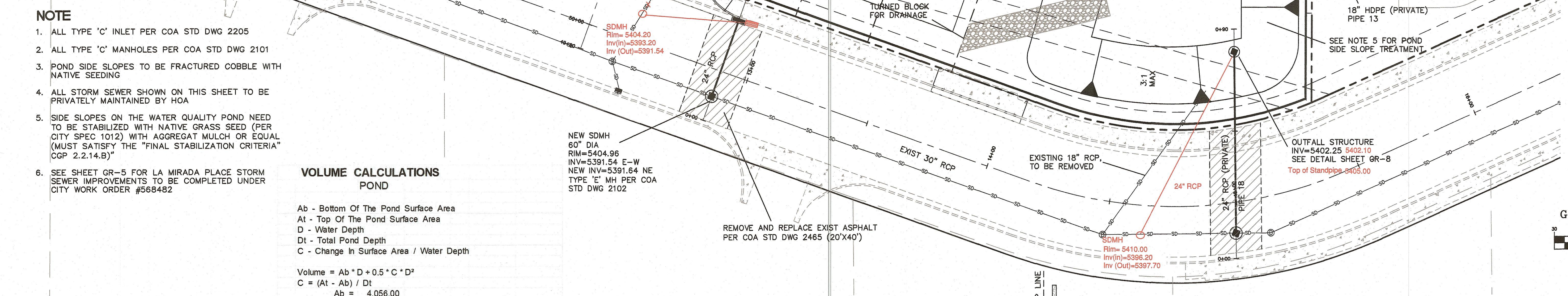
$$\text{C} = (\text{At} - \text{Ab}) / \text{Dt}$$

Ab = 4,056.00  
At = 11,509.00  
Dt = 7.46  
C = 999.06

ACTUAL ELEV.	DEPTH (FT)	VOLUME (AC-FT)
5400.00	0.00	0.00
5401.00	1.00	0.0931
5402.25	2.25	0.2274
5403.00	3.00	0.3252
5404.00	4.00	0.4757
5405.25	5.25	0.6960
5406.00	6.00	0.8454
5407.46	7.46	1.1732

First Flush Elevation

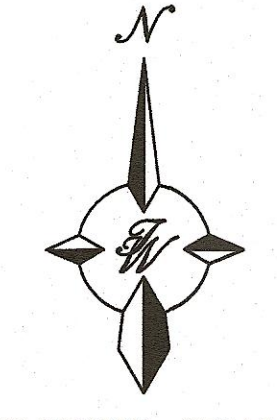
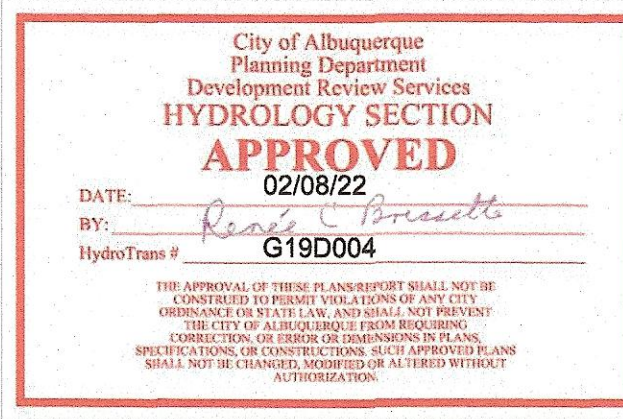
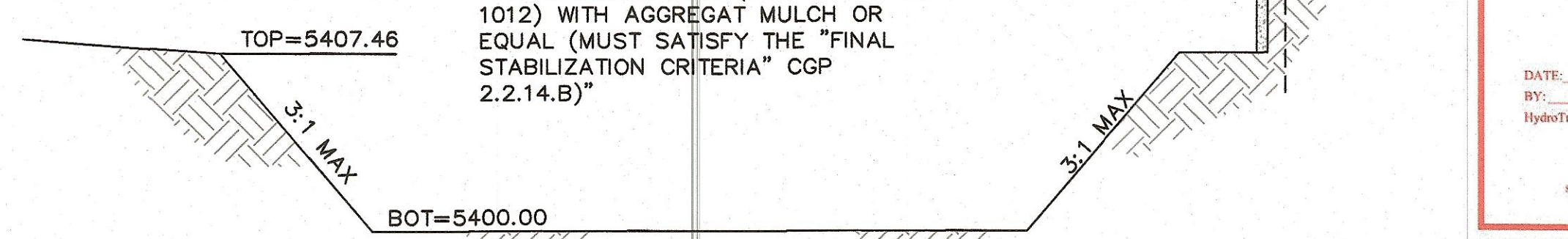
Top of Outlet Grate



**CAUTION**  
ALL EXISTING UTILITIES SHOWN WERE OBTAINED FROM RESEARCH, AS-BUILTS, SURVEYS OR INFORMATION PROVIDED BY OTHERS. IT SHALL BE THE SOLE RESPONSIBILITY OF THE CONTRACTOR TO CONDUCT ALL NECESSARY FIELD INVESTIGATIONS PRIOR TO AND INCLUDING ANY EXCAVATION, TO DETERMINE THE ACTUAL LOCATION OF UTILITIES AND OTHER IMPROVEMENTS, PRIOR TO STARTING THE WORK. ANY CHANGES FROM THIS PLAN SHALL BE COORDINATED WITH AND APPROVED BY THE ENGINEER.

NOTE  
SIDE SLOPES ON THE WATER QUALITY POND NEED TO BE STABILIZED WITH NATIVE GRASS SEED (PER CITY SPEC 1012) WITH AGGREGAT MULCH OR EQUAL (MUST SATISFY THE "FINAL STABILIZATION CRITERIA" CGP 2.2.14.B)

## SECTION A-A NTS



GRAPHIC SCALE  
( IN FEET )  
1 inch = 30 ft.