

CITY OF ALBUQUERQUE

Planning Department
Alan Varela, Director



Mayor Timothy M. Keller

July 14, 2025

Peter Butterfield, R.A
Peter Butterfield Architect
13013 Glenwood Hills Ct NE
Albuquerque, NM 87111

**Re: Fredy's Frozen Custard
4315 Wyoming Blvd. NE
30-Day Temporary Certificate of Occupancy
Transportation Development Final Inspection
Architect's Stamp dated 02-22-24 (G19-D004G)
Certification dated 07-07-2025**

Dear Mr. Butterfield,

Based upon the information provided in your submittal received 07-10-25, Transportation Development has no objection to a 30-day Temporary Certificate of Occupancy based. This letter serves as a "green tag" from Transportation Development for a 30-day Temporary Certificate of Occupancy to be issued by the Building and Safety Division.

Prior to the issuance of a permanent Certificate of Occupancy, the following items must be addressed:

1. Remove Fence and construction debris from the site.
2. Once fence is removed, please contact me to schedule a site visit to inspect the ADA ramps and accessible pathways, as I was unable to review them due to the site being closed.



CITY OF ALBUQUERQUE

Planning Department
Alan Varela, Director



Mayor Timothy M. Keller

Once these corrections are complete, email pictures to malnajjar@cabq.gov for release of Final CO.

If you have any questions, please contact me at (505) 924-3675.

Sincerely,

A handwritten signature in black ink, appearing to read 'Marwa Al-najjar', with a long, sweeping horizontal line extending to the right.

Marwa Al-najjar
Associate Engineer, Planning Dept.
Development Review Services

PO Box 1293

Albuquerque

NM 87103

www.cabq.gov

peter butterfield architect

• 505 514 1364 • 13013 Glenwood Hills Ct NE • Albuquerque New Mexico 87111 •

TRAFFIC CERTIFICATION

I, PETER BUTTERFIELD, NMRA 3850, OF THE FIRM PETER BUTTERFIELD, ARCHITECT, HEREBY CERTIFY THAT THIS PROJECT IS IN SUBSTANTIAL COMPLIANCE WITH AND IN ACCORDANCE WITH THE DESIGN INTENT OF THE APPROVED PLAN DATED 02-22-2024. THE RECORD INFORMATION EDITED ONTO THE ORIGINAL DESIGN DOCUMENT HAS BEEN OBTAINED BY PETER BUTTERFIELD OF THE FIRM PETER BUTTERFIELD ARCHITECT I FURTHER CERTIFY THAT I HAVE PERSONALLY VISITED THE PROJECT SITE ON JULY 1, 2025 AND HAVE DETERMINED BY VISUAL INSPECTION THAT THE SURVEY DATA PROVIDED IS REPRESENTATIVE OF ACTUAL SITE CONDITIONS AND IS TRUE AND CORRECT TO THE BEST OF MY KNOWLEDGE AND BELIEF. THIS CERTIFICATION IS SUBMITTED IN SUPPORT OF A REQUEST FOR A TEMPORARY CERTIFICATE OF OCCUPANCY.

THE RECORD INFORMATION PRESENTED HEREON IS NOT NECESSARILY COMPLETE AND INTENDED ONLY TO VERIFY SUBSTANTIAL COMPLIANCE OF THE TRAFFIC ASPECTS OF THIS PROJECT. THOSE RELYING ON THE RECORD DOCUMENT ARE ADVISED TO OBTAIN INDEPENDENT VERIFICATION OF ITS ACCURACY BEFORE USING IT FOR ANY OTHER PURPOSE.

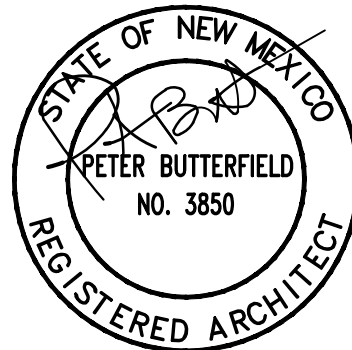


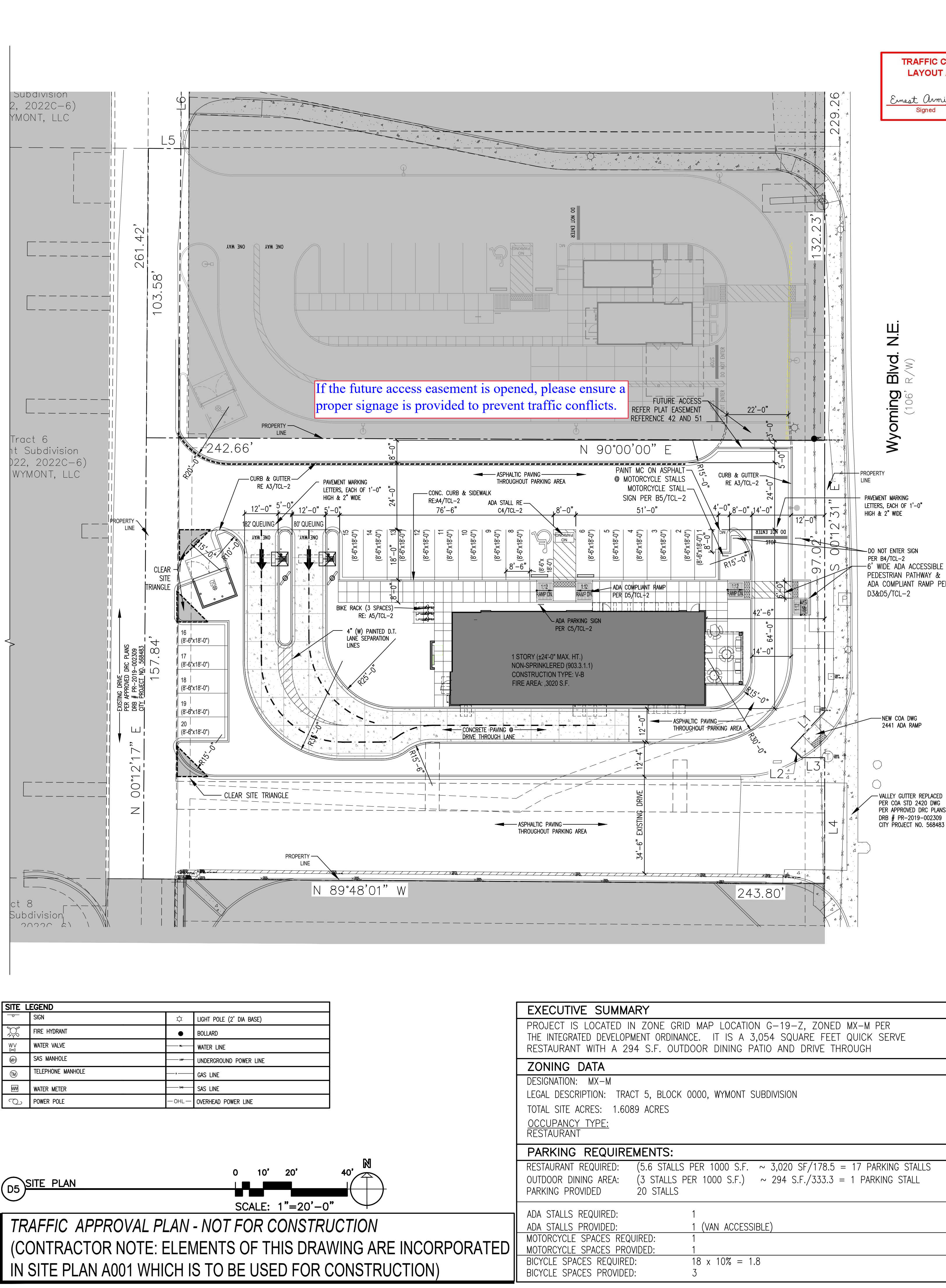
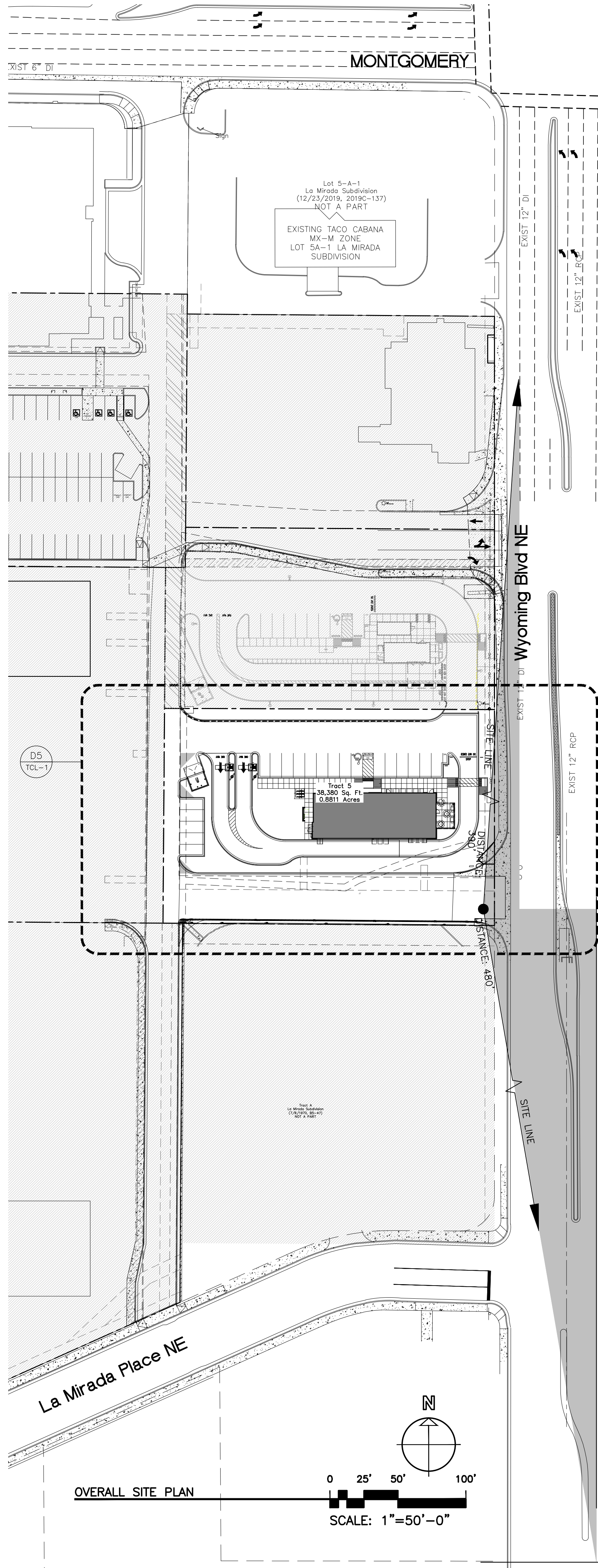
Signature of Engineer or Architect

ENGINEER'S OR ARCHITECT'S STAMP

July 7, 2025

Date





pba
peter butterfield architect

13013 glenwood hills ct. ne
albuquerque nm 87111
(ph) 505 514 1364

STATE OF NEW MEXICO
PETER BUTTERFIELD
NO. 3850
2/22/24
REGISTERED ARCHITECT

DRAWING NAME
REVISIONS

Freddy's Frozen Custard
4315 Wyoming Blvd. NE
Albuquerque NM

TCL-1
February 22, 2024

DO Zone Atlas
May 2018

AGIS

IDO Zoning Information as of May 17, 2018
The Zone Districts and Overlay Zones are established by the Integrated Development Ordinance (IDDO).

Zone Atlas Page: G-19-Z

Legend:

- Easement
- Escarpment
- Hydrographical National Monument
- Areas Outside of City Limits
- Airport Protection Overlay (APO) Zone
- Character Protection Overlay (CPO) Zone
- Historic Protection Overlay (HPO) Zone
- View Protection Overlay (VPO) Zone

Scale: 0 250 500 1,000 Feet

A3 CONCRETE CURB & GUTTER
1'-0"

A4 SIDEWALK SECTION
1"=1'-0"

PLAN VIEW
1/2"=1'-0"

Ernest Armijo 3/12/2024
Signed Date

A5 BICYCLE RACK
1/2"=1'-0"

B5 MOTORCYCLE SIGN ELEVATION
1/2"=1'-0"

B4 DO NOT ENTER SIGN ELEVATION
 $1/2'' = 1'-0''$

C4 TYPICAL ADA PARKING STALLS DETAIL
1/4"=1'-0"

C5 H.C. SIGN ELEVATION
1/2"=1'-0"

D3 RAMP @ SIDEWALK

D4 ACCESSIBLE SIDEWALK RAMPS

D5 ACCESSIBLE SIDEWALK RAMP

ME

REVISIONS

 \wedge

Freddy's Frozen Custard
4315 Wyoming Blvd. NE
Albuquerque NM

SHEET NO. **TCL-2**
February 22, 202