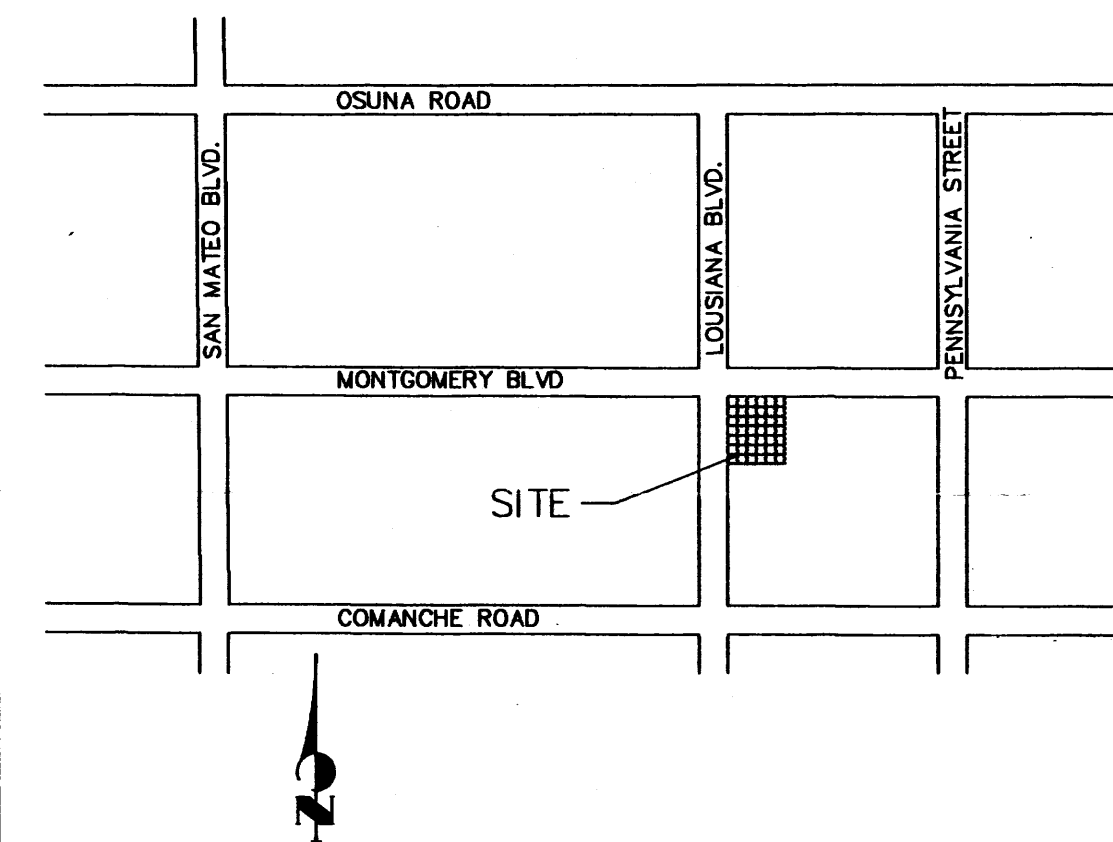
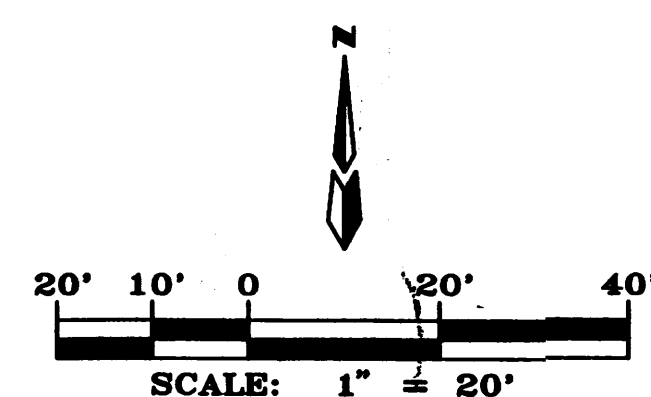
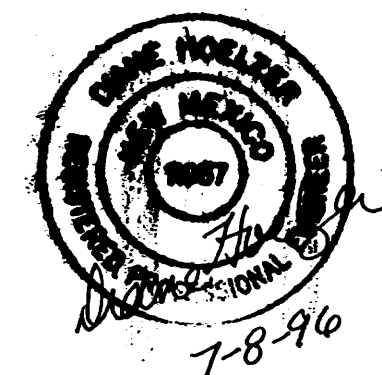
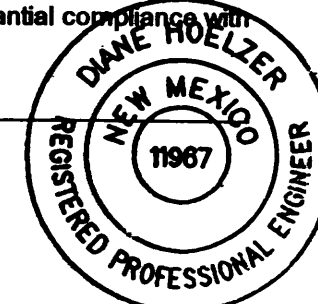


NOTE:  
CONTRACTOR SHALL REFER TO THE SITE SURVEY FOR DETERMINATION  
OF EXISTING STRUCTURES, APPURTENANCES, ETC. TO BE EITHER  
DEMOLISHED OR RELOCATED.

#### RECORD DRAWING

I hereby certify that the information contained on this drawing has been revised  
in accordance with information furnished by the contractor, Fluor Daniels, Inc.,  
and by the surveyor, Doug Smith Surveying, Inc., and reflects the construction as  
actually accomplished. This plan as constructed is in substantial compliance with  
the Approved Plan.

*Diane Hoelzer* 3-6-99  
Diane Hoelzer, N.M.P.E. 41967



VICINITY MAP ZONE MAP: G-19-Z

TBM (TEMPORARY BENCHMARK)  
ALUMINUM DISK STAMPED "ACS BM, 13-19C", AT THE SOUTHEAST CORNER OF  
LOUISIANA BLVD. N.E. AND MONTGOMERY BLVD. N.E.  
ELEV. = 5309.68

ACS BENCHMARK  
ELEVATIONS SHOWN ARE BASED ON THE ACS 1 1/2" ALUMINUM DISK STAMPED  
"ACS BM, 13-19C", SET IN THE TOP OF THE CONCRETE BASE OF A UTILITY POLE  
AT THE SOUTHEAST CORNER OF LOUISIANA BLVD. N.E. AND MONTGOMERY BLVD. N.E.  
ELEV. = 5309.68

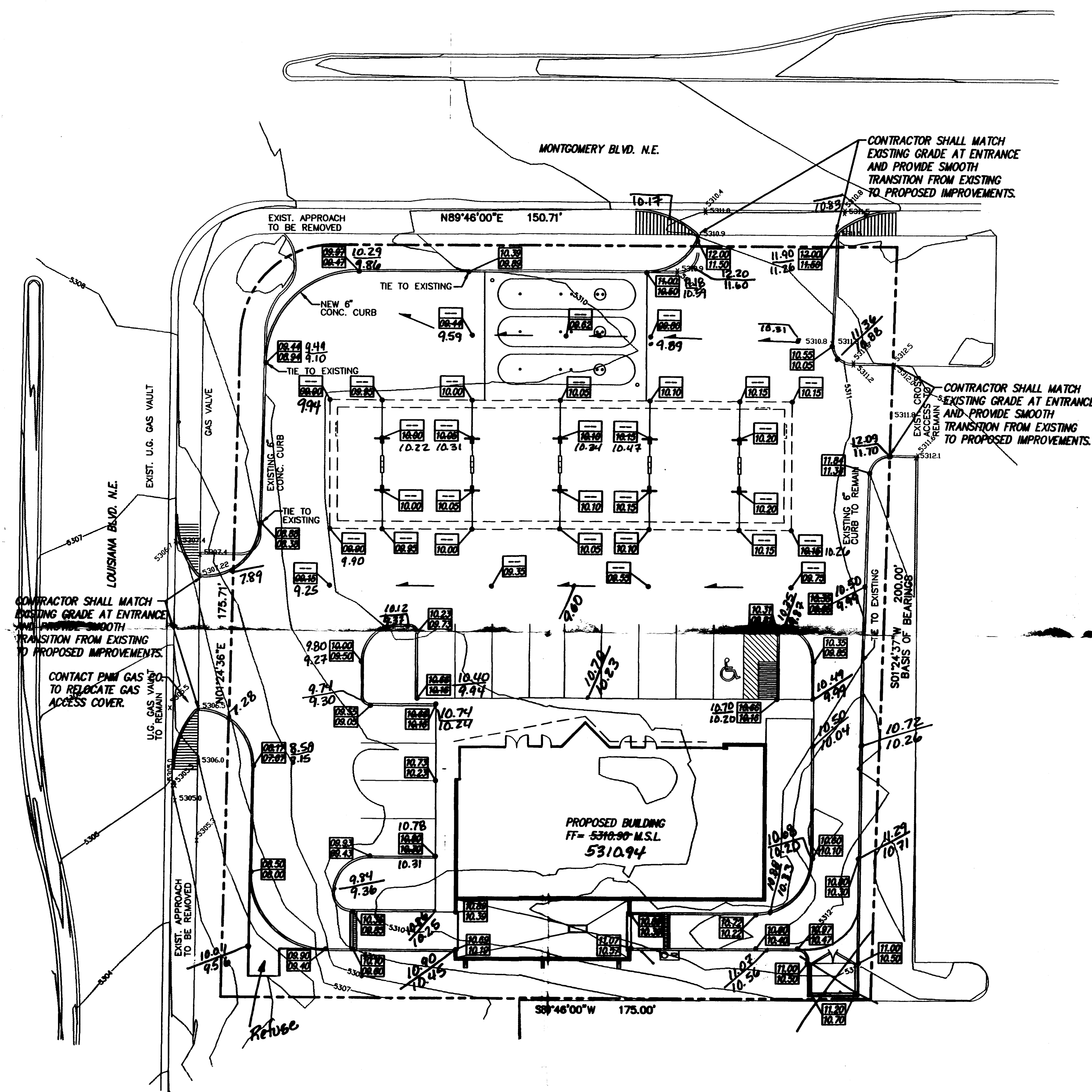
LEGAL DESCRIPTION  
PORTION OF SECTION 6, TOWNSHIP 10 NORTH, RANGE 4 EAST, OF NMPM  
CITY OF ALBUQUERQUE, COUNTY OF BERNALILLO, STATE OF NEW MEXICO

LEGEND  
--- PROPERTY LINE  
17.20  
10.72  
PROPOSED SPOT ELEVATION  
--- FLOW ARROW, DRAINAGE SWALE  
5310  
CONTOUR ELEVATION  
x 5305.0  
SPOT ELEVATION

#### PHILLIPS 66 - LOUISIANA & MONTGOMERY GRADING & DRAINAGE PLAN

**dmg** D. MARK GOODWIN & ASSOCIATES, P.A.  
CONSULTING ENGINEERS & SURVEYORS  
P.O. BOX 90606  
ALBUQUERQUE, NEW MEXICO 87199  
(505) 345-2010

Designed: RMJ	Drawn: MCG	Checked: DMG	Sheet 1 of 1
Scale: 1" = 20'	Date: 06/20/96	Job: 96044	

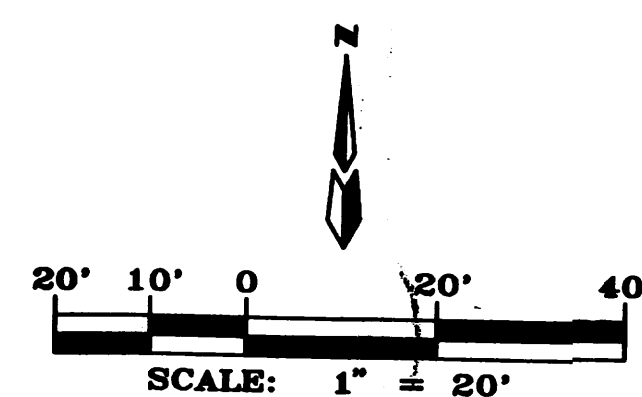
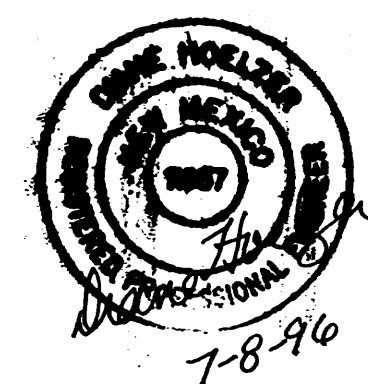


NOTE:  
CONTRACTOR SHALL REFER TO THE SITE SURVEY FOR DETERMINATION  
OF EXISTING STRUCTURES, APPURTENANCES, ETC. TO BE EITHER  
DEMOLISHED OR RELOCATED.

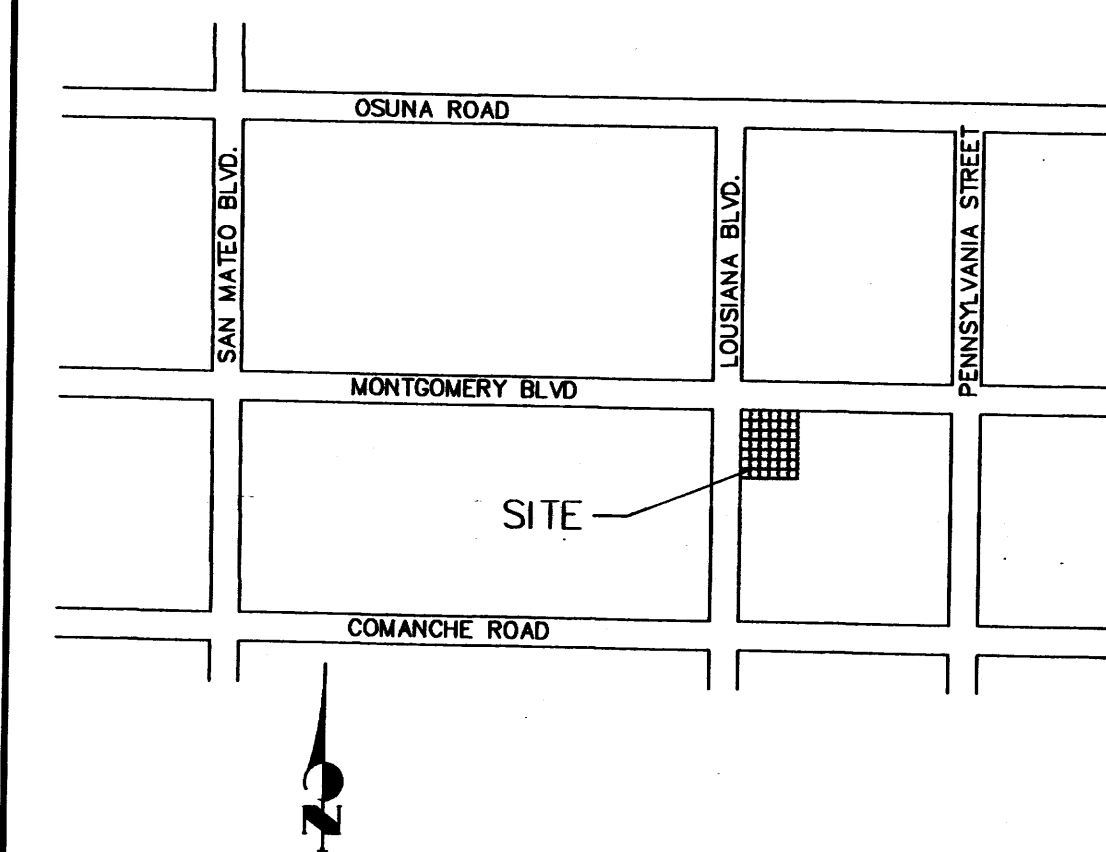
#### RECORD DRAWING

I hereby certify that the information contained on this drawing has been revised  
in accordance with information furnished by the contractor, Fluor Daniels, Inc.,  
and by the surveyor, Doug Smith Surveying, Inc., and reflects the construction as  
actually accomplished. This plan as constructed is in substantial compliance with  
the Approved Plan.

*Diane Hoeltzer* 3-6-99  
Diane Hoeltzer, NMPE 41967



PH66\6044GD20\07-05-96



VICINITY MAP ZONE MAP: G-19-Z

#### TBM (TEMPORARY BENCHMARK)

ALUMINUM DISK STAMPED "ACS BM, 13-19C", AT THE SOUTHEAST CORNER OF  
LOUISIANA BLVD. N.E. AND MONTGOMERY BLVD. N.E.  
ELEV. = 5308.68

#### ACS BENCHMARK

ELEVATIONS SHOWN ARE BASED ON THE ACS 1 1/2" ALUMINUM DISK STAMPED  
"ACS BM, 13-19C", SET IN THE TOP OF THE CONCRETE BASE OF A UTILITY POLE  
AT THE SOUTHEAST CORNER OF LOUISIANA BLVD. N.E. AND MONTGOMERY BLVD. N.E.  
ELEV. = 5308.68

#### LEGAL DESCRIPTION

PORTION OF SECTION 6, TOWNSHIP 10 NORTH, RANGE 4 EAST, OF NMPM  
CITY OF ALBUQUERQUE, COUNTY OF BERNALILLO, STATE OF NEW MEXICO

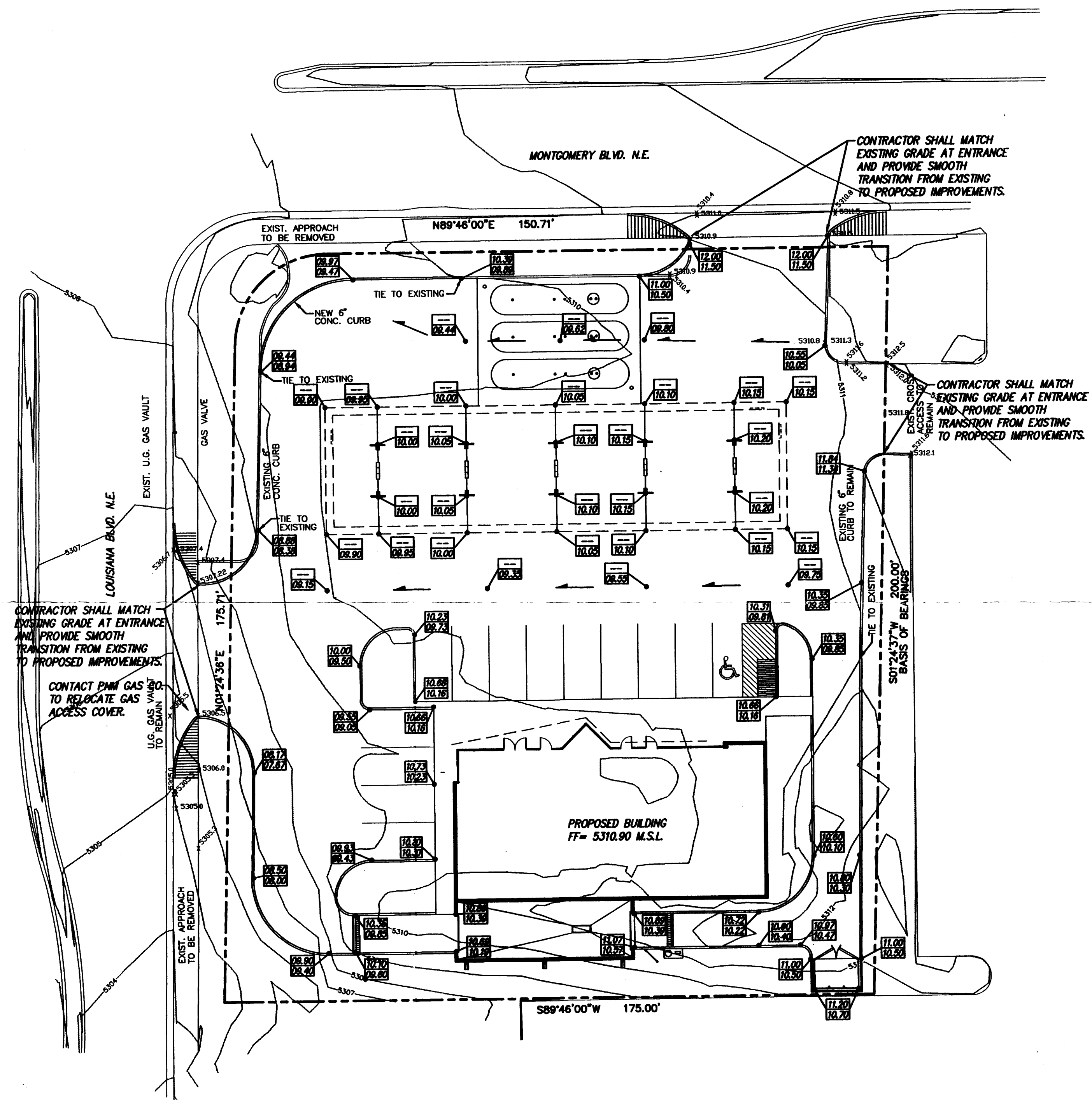
#### LEGEND

- PROPERTY LINE
- 17.20  
16.20 PROPOSED SPOT ELEVATION
- FLOW ARROW, DRAINAGE SWALE
- 5310 CONTOUR ELEVATION
- x 5305.0 SPOT ELEVATION

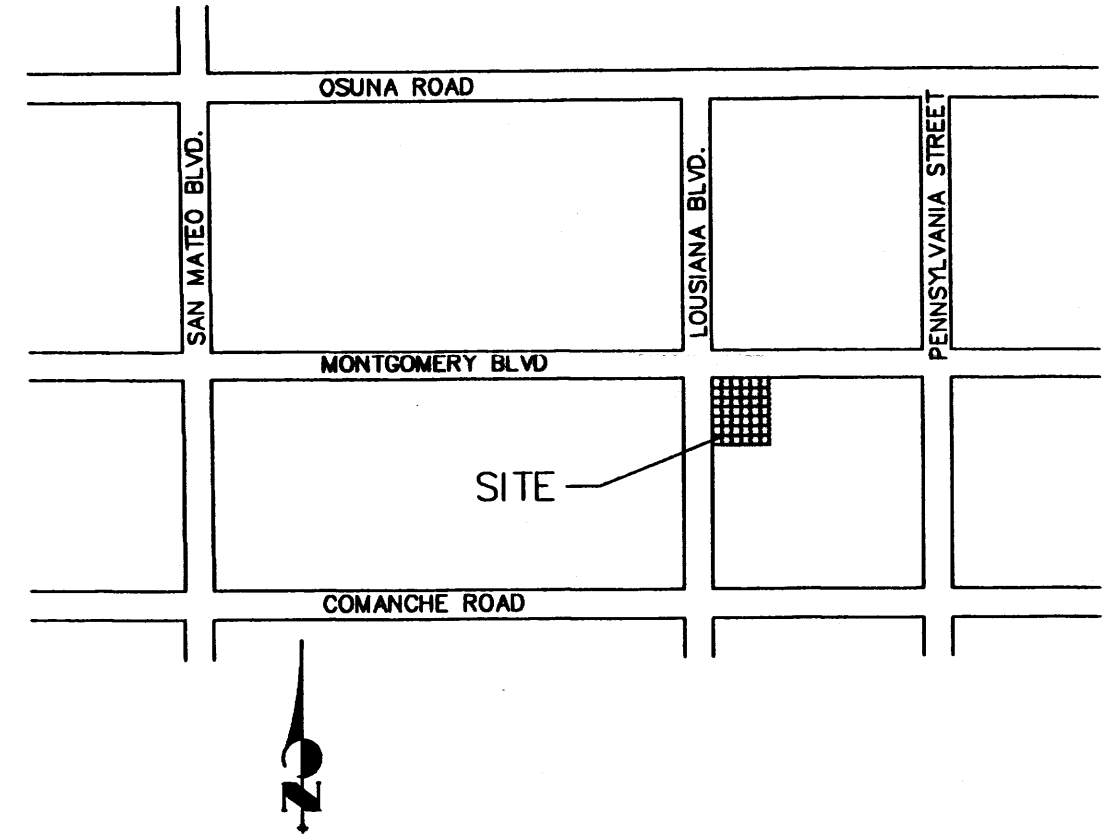
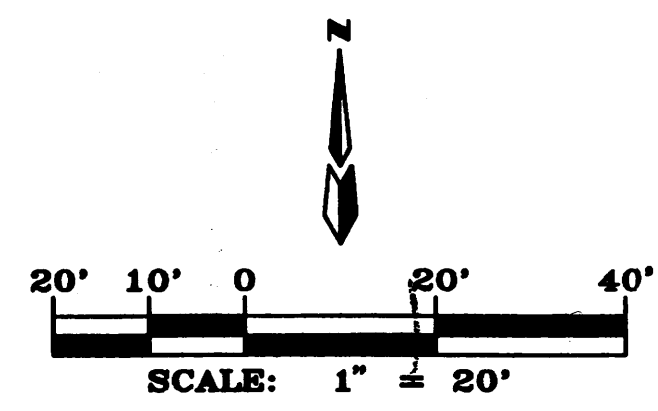
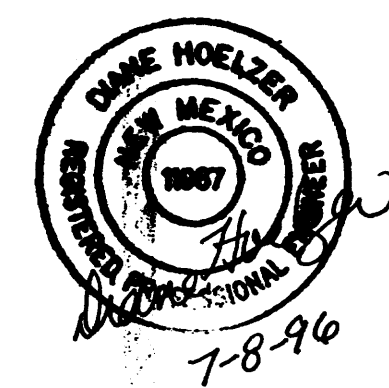
#### PHILLIPS 66 - LOUISIANA & MONTGOMERY GRADING & DRAINAGE PLAN

**dmg** D. MARK GOODWIN & ASSOCIATES, P.A.  
CONSULTING ENGINEERS & SURVEYORS  
P.O. BOX 90606  
ALBUQUERQUE, NEW MEXICO 87199  
(505) 345-2010

Designed: RMJ	Drawn: MCG	Checked: DMG	Sheet 1 of 1
Scale: 1" = 20'	Date: 06/20/96	Job: 96044	



NOTE:  
CONTRACTOR SHALL REFER TO THE SITE SURVEY FOR DETERMINATION OF EXISTING STRUCTURES, APPURTENANCES, ETC. TO BE EITHER DEMOLISHED OR RELOCATED.



VICINITY MAP ZONE MAP: G-19-Z

TBM (TEMPORARY BENCHMARK)  
ALUMINUM DISK STAMPED "ACS BM, 13-19C" AT THE SOUTHEAST CORNER OF LOUISIANA BLVD. N.E. AND MONTGOMERY BLVD. N.E. ELEV. = 5309.68

ACS BENCHMARK  
ELEVATIONS SHOWN ARE BASED ON THE ACS 1 1/2" ALUMINUM DISK STAMPED "ACS BM, 13-19C, SET IN THE TOP OF THE CONCRETE BASE OF A UTILITY POLE AT THE SOUTHEAST CORNER OF LOUISIANA BLVD. N.E. AND MONTGOMERY BLVD. N.E. ELEV. = 5309.68

LEGAL DESCRIPTION  
PORTION OF SECTION 6, TOWNSHIP 10 NORTH, RANGE 4 EAST, OF NMPM CITY OF ALBUQUERQUE, COUNTY OF BERNALILLO, STATE OF NEW MEXICO

- LEGEND
- PROPERTY LINE
  - 17.20 16.70 PROPOSED SPOT ELEVATION
  - FLOW ARROW, DRAINAGE SWALE
  - 5310 CONTOUR ELEVATION
  - x 5305.0 SPOT ELEVATION

JUL - 8 1996

PHILLIPS 66 - LOUISIANA & MONTGOMERY  
GRADING & DRAINAGE PLAN

**dmg** D. MARK GOODWIN & ASSOCIATES, P.A.  
CONSULTING ENGINEERS & SURVEYORS  
P.O. BOX 90606  
ALBUQUERQUE, NEW MEXICO 87199  
(505) 345-2010

Designed: RMJ	Drawn: MCG	Checked: DMG	Sheet 1 of 1
Scale: 1" = 20'	Date: 06/20/96	Job: 96044	