

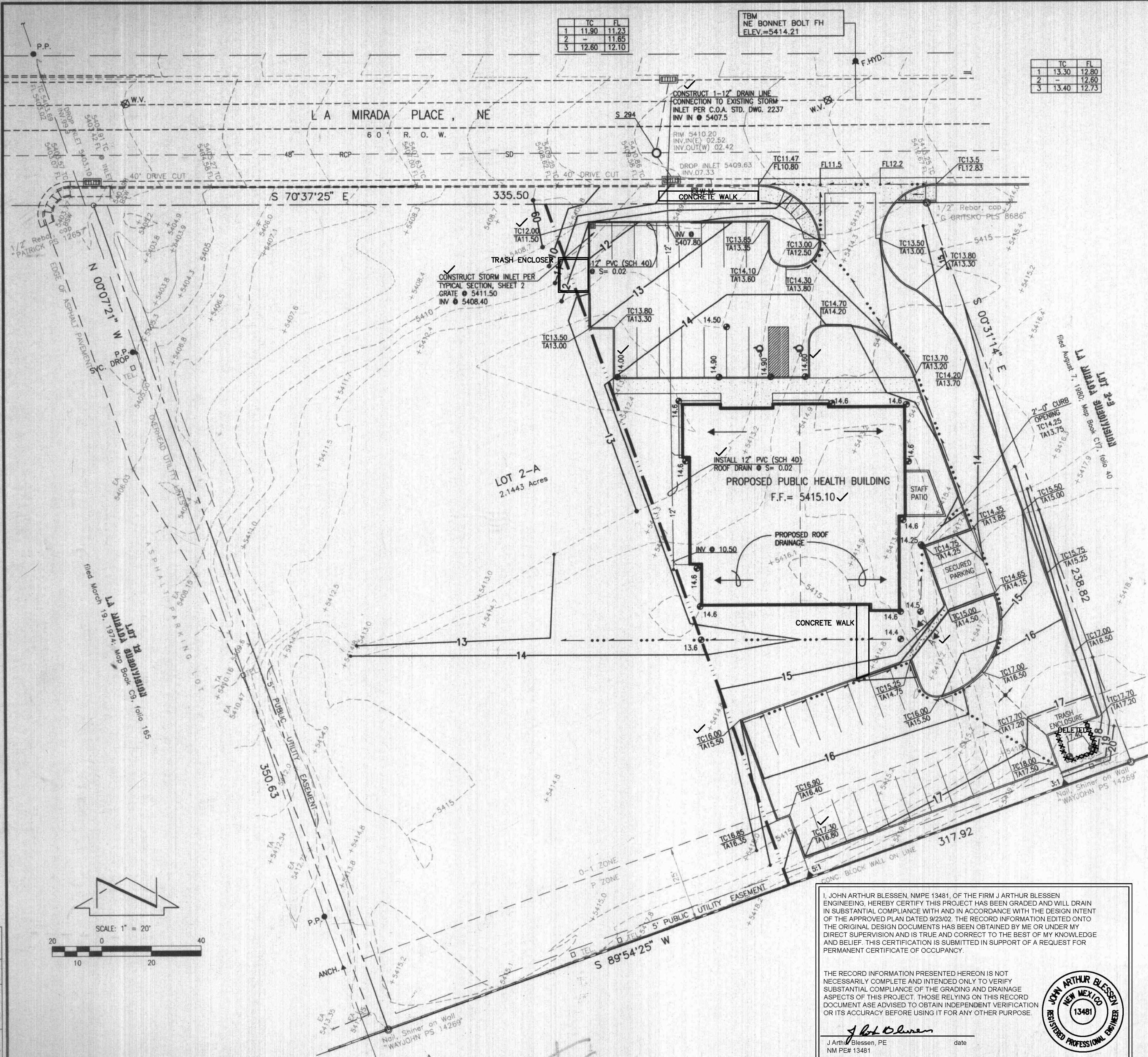
JEFF MORTENSEN & ASSOCIATES, INC.
6010-B MIDWAY PARK BLVD. NE
ALBUQUERQUE, N.M. 87109
ENGINEERS & SURVEYORS (505) 343-4250
FAX: 505-343-4254 Email: jma@jma-inc.com

GRADING AND DRAINAGE PLAN LA MIRADA PUBLIC HEALTH BUILDING

NOTE:

THIS IS NOT A BOUNDARY SURVEY. APPARENT PROPERTY CORNERS ARE SHOWN FOR ORIENTATION ONLY. BOUNDARY AND TOPOGRAPHIC INFORMATION SHOWN IS BASED ON ALTA SURVEY PERFORMED BY WAYJOHN SURVEYING INC. ON 5/21/02.

DESIGNED BY	J.G.M.	DATE		BY		REVISIONS		JOB NO.	2002.036.1
DRAWN BY	J.L.P.J.R.	DATE		BY		REVISIONS		DATE	09-2002
APPROVED BY	J.G.M.	DATE		BY		REVISIONS		SHEET	1 OF 2



F.I.R.M. MAP
SCALE: 1" = 500'

PANEL 143 OF 825

VICINITY MAP
SCALE: 1" = 750'

G-19

CONSTRUCTION NOTES

- TWO (2) WORKING DAYS PRIOR TO ANY EXCAVATION, CONTRACTOR MUST CONTACT NEW MEXICO ONE CALL SYSTEM 260-1990 (ALBUQUERQUE AREA), 1-800-321-ALERT(2537) (STATEWIDE), FOR LOCATION OF EXISTING UTILITIES.
 - PRIOR TO CONSTRUCTION, THE CONTRACTOR SHALL EXCAVATE AND VERIFY THE HORIZONTAL AND VERTICAL LOCATION OF ALL POTENTIAL OBSTRUCTIONS. SHOULD A CONFLICT EXIST, THE CONTRACTOR SHALL NOTIFY THE ENGINEER IN WRITING SO THAT THE CONFLICT CAN BE RESOLVED WITH A MINIMUM AMOUNT OF DELAY. THE CONTRACTOR SHALL BE RESPONSIBLE FOR ALL INTERPRETATIONS IT MAKES WITHOUT FIRST CONTACTING THE ENGINEER AS REQUIRED ABOVE.
 - ALL WORK ON THIS PROJECT SHALL BE PERFORMED IN ACCORDANCE WITH APPLICABLE FEDERAL, STATE AND LOCAL LAWS, RULES AND REGULATIONS CONCERNING CONSTRUCTION SAFETY AND HEALTH.
 - ALL CONSTRUCTION WITHIN PUBLIC RIGHT-OF-WAY SHALL BE PERFORMED IN ACCORDANCE WITH APPLICABLE CITY OF ALBUQUERQUE STANDARDS AND PROCEDURES.
 - IF ANY UTILITY LINES, PIPELINES, OR UNDERGROUND UTILITY LINES ARE SHOWN ON THESE DRAWINGS, THEY ARE SHOWN IN AN APPROXIMATE MANNER ONLY, AND SUCH LINES MAY EXIST WHERE NONE ARE SHOWN. IF ANY SUCH EXISTING LINES ARE SHOWN, THE LOCATION IS BASED ON INFORMATION PROVIDED BY THE OWNER OF SAID UTILITY, AND THE INFORMATION MAY BE INCOMPLETE, OR MAY BE OBSOLETE BY THE TIME CONSTRUCTION COMMENCES. THE ENGINEER HAS CONDUCTED ONLY PRELIMINARY INVESTIGATION OF THE LOCATION, DEPTH, SIZE, OR TYPE OF EXISTING UTILITY LINES, PIPELINES, OR UNDERGROUND UTILITY LINES. THIS INVESTIGATION IS NOT CONCLUSIVE, AND MAY NOT BE COMPLETE, THEREFORE, MAKES NO REPRESENTATION PERTAINING THERETO, AND ASSUMES NO RESPONSIBILITY OR LIABILITY THEREFOR. THE CONTRACTOR SHALL INFORM ITSELF OF THE LOCATION OF ANY UTILITY LINE, PIPELINE, OR UNDERGROUND UTILITY LINE IN OR NEAR THE AREA OF THE WORK IN ADVANCE OF AND DURING EXCAVATION WORK. THE CONTRACTOR IS FULLY RESPONSIBLE FOR ANY AND ALL DAMAGE CAUSED BY ITS FAILURE TO LOCATE, IDENTIFY AND PRESERVE ANY AND ALL EXISTING UTILITIES, PIPELINES, AND UNDERGROUND UTILITY LINES. IN PLANNING AND CONDUCTING EXCAVATION, THE CONTRACTOR SHALL COMPLY WITH STATE STATUTES, MUNICIPAL AND LOCAL ORDINANCES, RULES AND REGULATIONS, IF ANY, PERTAINING TO THE LOCATION OF THESE LINES AND FACILITIES.
 - AN EXCAVATION/CONSTRUCTION PERMIT WILL BE REQUIRED BEFORE BEGINNING ANY WORK WITHIN CITY RIGHT-OF-WAY. AN APPROVED COPY OF THESE PLANS MUST BE SUBMITTED AT THE TIME OF APPLICATION FOR THIS PERMIT.
 - BACKFILL COMPACTION SHALL BE ACCORDING TO RESIDENTIAL STREET USE.
 - MAINTENANCE OF THESE FACILITIES SHALL BE THE RESPONSIBILITY OF THE OWNER OF THE PROPERTY SERVED.
 - THE DESIGN OF PLANTERS AND LANDSCAPED AREAS IS NOT PART OF THIS PLAN. ALL PLANTERS AND LANDSCAPED AREAS ADJACENT TO THE BUILDING(S) SHALL BE PROVIDED WITH POSITIVE DRAINAGE TO AVOID ANY PONDING ADJACENT TO THE STRUCTURE. FOR CONSTRUCTION DETAILS, REFER TO LANDSCAPING PLAN.
- ### EROSION CONTROL MEASURES:
- THE CONTRACTOR SHALL ENSURE THAT NO SOIL ERODES FROM THE SITE INTO PUBLIC RIGHT-OF-WAY OR ONTO PRIVATE PROPERTY.
 - THE CONTRACTOR SHALL PROMPTLY CLEAN UP ANY MATERIAL EXCAVATED WITHIN THE PUBLIC RIGHT-OF-WAY SO THAT THE EXCAVATED MATERIAL IS NOT SUSCEPTIBLE TO BEING WASHED DOWN THE STREET.
 - THE CONTRACTOR SHALL SECURE "TOPSOIL DISTURBANCE PERMIT" PRIOR TO BEGINNING CONSTRUCTION.
 - ANY AREAS OF EXCESS DISTURBANCE (TRAFFIC ACCESS, STORAGE YARD, EXCAVATED MATERIAL, ETC.) SHALL BE RE-SEEDING ACCORDING TO C.O.A. SPECIFICATION 1012 "NATIVE GRASS SEEDING". THIS WILL BE CONSIDERED INCIDENTAL TO CONSTRUCTION, THEREFORE, NO SEPARATE PAYMENT WILL BE MADE.

DESCRIPTION:

LOT NUMBERED TWO-A (2-A), LA MIRADA SUBDIVISION, ALBUQUERQUE, NEW MEXICO, AS THE SAME IS SHOWN AND DESIGNATED ON THE SUMMARY MAP OF LOT 2, LA MIRADA SUBDIVISION, FILED IN THE OFFICE OF THE COUNTY CLERK OF BERNALILLO COUNTY, NEW MEXICO ON AUGUST 7, 1980, IN MAP BOOK C17, FOLIO 40.

PROJECT BENCHMARK

THE STATION MARK IS A STANDARD BRASS TABLET (KOOGL & POULS ENG.), STAMPED "3-F1987" SET IN TOP OF A CONCRETE POST ABOUT 0.2 FT. BELOW THE TOP OF A CONCRETE CURB. THE STATION IS IN THE NORTHWEST QUADRANT OF THE INTERSECTION OF OSUNA RD. N.E. AND WYOMING BLVD. N.E. ELEV.= 5440.56 FT. (NGVD 1929)

TBM

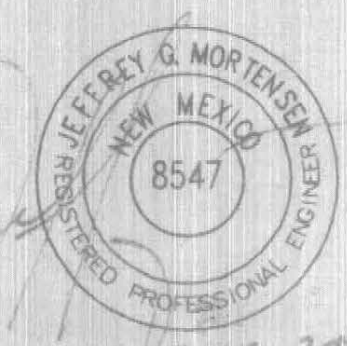
N.E. BONNET BOLT OF THE FIRE HYDRANT LOCATED ON THE NORTH SIDE OF LA MIRADA PLACE N.E. NNW OF N.E. PROPERTY CORNER, ELEV.=5414.21

LEGEND:

- OS MH STORM SEWER MANHOLE
- SS MH SANITARY SEWER MANHOLE
- F.HYO. FIRE HYDRANT
- P.P. OVERHEAD UTILITY POLE
- ANCH. POLE ANCHOR
- W.V. WATER VALVE
- TEL. TELEPHONE RISER
- L.P. LIGHT POLE
- EA EDGE OF ASPHALT
- TA TOP OF ASPHALT ELEVATION
- FL FLOW LINE
- TC TOP OF CURB OR CONCRETE ELEVATION
- ESW BACK OF SIDEWALK CONC. BLOCK WALL
- SSW SANITARY SEWER LINE
- SSW STORM SEWER LINE
- WL WATERLINE
- UL OVERHEAD UTILITY LINE(S)
- EC EXISTING CONTOUR
- PC PROPOSED CONTOUR
- PA PROPOSED ASPHALT
- PC PROPOSED CONCRETE
- PE PROPOSED SPOT ELEVATION
- PL PHASE LINE
- HP HIGH POINT
- FL FLOWLINE

ALBUQUERQUE
BLDG & SAFETY
OCT 10 2002
U.B.C.
PLAN CHECK
SECTION 4

3



I, JOHN ARTHUR BLESSIN, NMPE 13481, OF THE FIRM J ARTHUR BLESSIN ENGINEERING, HEREBY CERTIFY THIS PROJECT HAS BEEN GRADED AND WILL DRAIN IN SUBSTANTIAL COMPLIANCE WITH AND IN ACCORDANCE WITH THE DESIGN INTENT OF THE APPROVED PLAN DATED 9/23/02. THE RECORD INFORMATION EDITED ONTO THE ORIGINAL DESIGN DOCUMENTS HAS BEEN OBTAINED BY ME OR UNDER MY DIRECT SUPERVISION AND IS TRUE AND CORRECT TO THE BEST OF MY KNOWLEDGE AND BELIEF. THIS CERTIFICATION IS SUBMITTED IN SUPPORT OF A REQUEST FOR PERMANENT CERTIFICATE OF OCCUPANCY.

THE RECORD INFORMATION PRESENTED HEREON IS NOT NECESSARILY COMPLETE AND INTENDED ONLY TO VERIFY SUBSTANTIAL COMPLIANCE OF THE GRADING AND DRAINAGE ASPECTS OF THIS PROJECT. THOSE RELYING ON THIS RECORD DOCUMENT ARE ADVISED TO OBTAIN INDEPENDENT VERIFICATION OR ITS ACCURACY BEFORE USING IT FOR ANY OTHER PURPOSE.

J. Arthur Blessin, PE
NM PE# 13481

JOHN ARTHUR BLESSIN
NEW MEXICO
13481
REGISTERED PROFESSIONAL ENGINEER