

CITY OF ALBUQUERQUE



March 24, 2016

Richard J. Berry, Mayor

George T. Rodriguez
George T. Rodriguez Development Consultant
12800 San Juan NE
Albuquerque, NM, 87123

**RE: Marble Brewery (Montgomery)
Grading and Drainage Exhibit
Engineer's Stamp Date 3-21-16 (File: G21D043)**

Dear Mr. Rodriguez:

Based upon the information provided in your submittal received 3-22-2016, the above referenced Grading and Drainage Plan is approved for Building Permit.

Please attach a copy of this approved plan in the construction sets when submitting for the building permit. Prior to Certificate of Occupancy release, Engineer Certification per the DPM checklist will be required for Transportation; during that review, the grading improvements will be inspected. A Hydrology Certification will not be required given the small scale of the paving improvements.

PO Box 1293

If you have any questions, you can contact me at 924-3986.

Albuquerque

New Mexico 87103

www.cabq.gov

Sincerely,

Abiel Carrillo, P.E.
Principal Engineer, Planning Dept.
Development Review Services

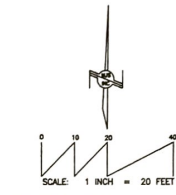
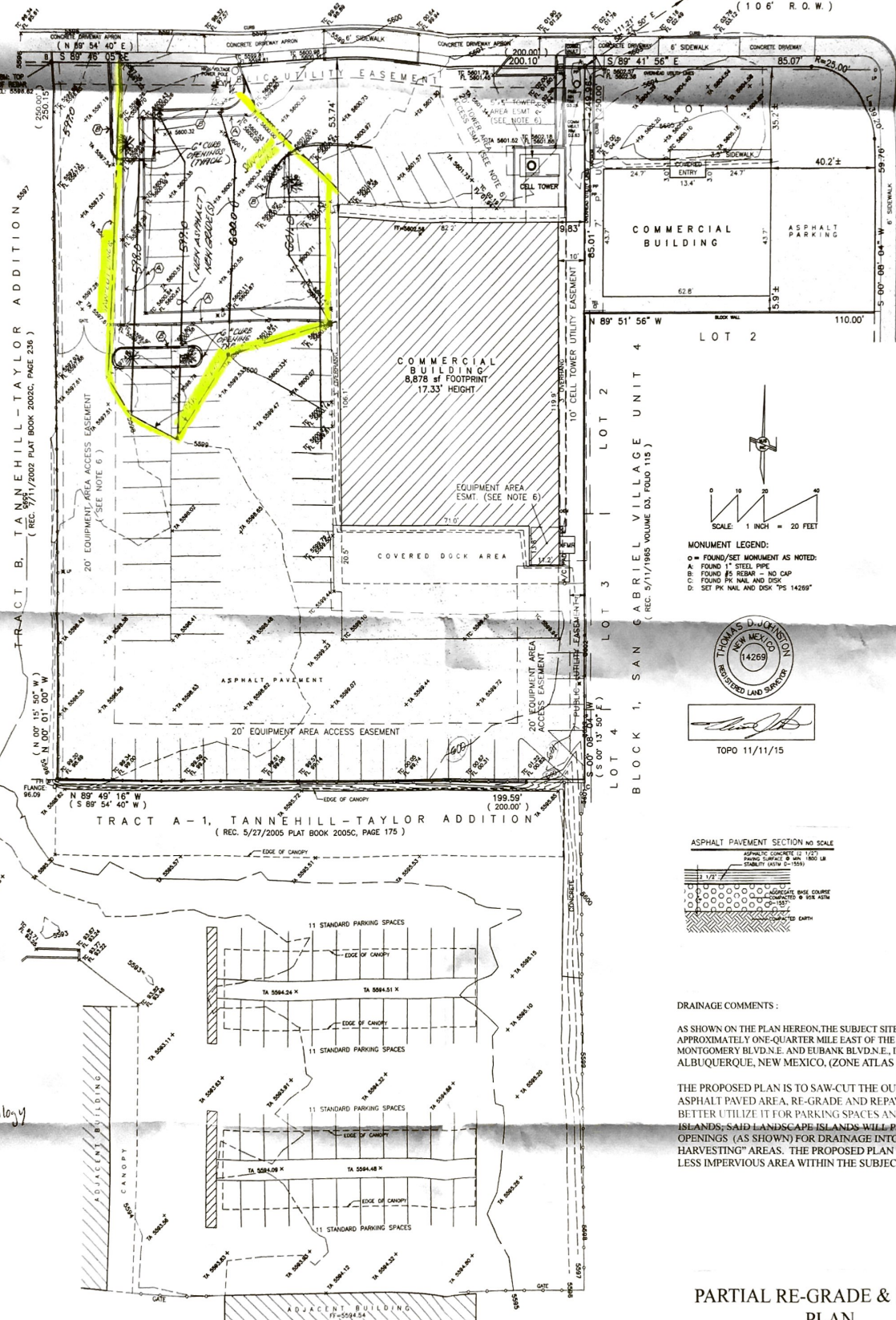
Orig: Drainage file

9904 MONTGOMERY BOULEVARD, N.E.
(106' R.O.W.)

ACS MONUMENT "30_F21"
x=1,556,845.546
y=1,502,967.887
Ground-to-Top of Monument
0.999643671
Mapping Angle
-0.00039613°
NAD 83
NAD 83

9998 MONTGOMERY BOULEVARD, N.E.
(106' R.O.W.)

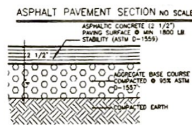
PITT STREET, N.E.
(50' R.O.W.)



MONUMENT LEGEND:
○ = FOUND/SET MONUMENT AS NOTED:
A. FOUND 1" STEEL PIPE
B. FOUND #5 REBAR - NO CAP
C. FOUND PR. NAIL AND DISK
D. SET PR. NAIL AND DISK "PS 14269"



TOPO 11/11/15

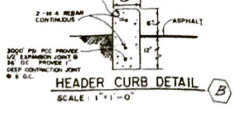
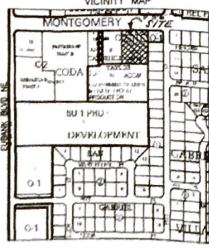


DRAINAGE COMMENTS:

AS SHOWN ON THE PLAN HEREON, THE SUBJECT SITE IS LOCATED APPROXIMATELY ONE-QUARTER MILE EAST OF THE INTERSECTION OF MONTGOMERY BLVD. N.E. AND EUBANK BLVD. N.E., IN THE CITY OF ALBUQUERQUE, NEW MEXICO, (ZONE ATLAS MAP "F-21-Z").

THE PROPOSED PLAN IS TO SAW-CUT THE OUTLINED EXISTING ASPHALT PAVED AREA, RE-GRADE AND REPAVE SAID AREA TO BETTER UTILIZE IT FOR PARKING SPACES AND LANDSCAPE ISLANDS; SAID LANDSCAPE ISLANDS WILL PROVIDE "CURB OPENINGS" (AS SHOWN) FOR DRAINAGE INTO "WATER HARVESTING" AREAS. THE PROPOSED PLAN WILL PROVIDE FOR LESS IMPERVIOUS AREA WITHIN THE SUBJECT PROPERTY.

George will email the A in pavement to do the hydrology



REMOVE EXISTING CURBING



PARTIAL RE-GRADE & REPAVE PLAN
FOR DEVELOPMENT OF
9904 MONTGOMERY BLVD. N.E.
ALBUQUERQUE, NEW MEXICO
MARCH, 2016

Existing pavement SF = 1635 SF
Proposed pavement = 1520 SF (Pavement removed is replaced w/ landscaping)
D115

Decrease of 115 SF of impervious area
First flush to be captured in new landscape islands

$$X.O = \frac{1520}{43360} = 0.035 \text{ ac}$$

$$\Sigma = 0.037 \text{ ac}$$