

# CITY OF ALBUQUERQUE



February 13, 2015

Eugenio Valdez, P.E.  
Wilson & Company, Inc.  
4900 Lang Ave. NE  
Albuquerque, NM 87109

**Re: El Dorado High School  
Construction Drawings for SD tie-in to Embudito Arroyo (G22D004)  
Engineer's Stamp Date 2-20-2015**

Dear Mr. Valdez,

Based upon the information provided in your submittal received 2-24-15, the above referenced plan is approved for SO-19 Permit.

A separate SO-19 permit is required for construction within City ROW. A copy of this approval letter must be on hand when applying for the excavation/barricading permit. The work in the City ROW must be inspected and accepted. Contractor must contact Jason Rodriguez at 235-8016 and Construction Coordination at 924-3416 to schedule an inspection.

PO Box 1293

Albuquerque

If you have any questions, you can contact me at 924-3695.

New Mexico 87103

Sincerely,

www.cabq.gov

Rita Harmon, P.E.  
Senior Engineer, Planning Dept.  
Development and Building Services

Orig: Drainage file  
c.pdf via Email: Recipient, Monica Ortiz, Jason Rodriguez and Antoinette Baldonado (DMD)

# **WILSON & COMPANY**

4900 Lang Ave NE  
Albuquerque, NM 87109  
505-348-4000 phone  
505-348-4055 fax

Alaska  
Arizona  
California  
Colorado  
Florida  
Kansas  
Missouri  
Nebraska  
New Mexico  
Oklahoma  
Texas  
Utah

February 20, 2015

Rita Harmon, P.E.  
Planning Department  
Development & Building Services Division  
600 2<sup>nd</sup> St. NW, Suite 201  
Albuquerque, NM 87102

RE: El Dorado School  
Construction Drawings for SD tie-in to Embudito Arroyo (G22D004)  
Engineer's Stamp Dated 1-16-2015

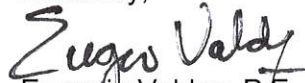
Dear Ms. Harmon,

Enclosed are two sets of revised Construction Plans submitted for SO-19 Permit approval. These revisions have been performed based on your comments regarding the first submittal of these Construction Plans.

The following is a written response to those comments:

1. C-101: The channel is shown and the demolition extents adjusted. A note was added about preserving the existing steel reinforcing and referencing AMAFCAS "New to Existing Channel Lining Construction Joint Details" within Standard Drawing 102. AMAFCAS Standard Drawing 102 is also included.
2. C-103: The channel is shown
3. C-401: The channel is shown and the water quality manhole was removed. The water quality plate will be installed in the Type "D" double inlet.
4. C-501: Detail D1 was deleted.
5. C-501: Detail A1 was modified to include water quality plate and drain.
6. C-501: Detail D4 was modified to show specific dimensions pertaining to this project.
7. Additional Standard Details that are referenced in plans were included for reference.

Sincerely,

  
Eugenio Valdez, P.E.  
Project Engineer  
Wilson & Company



M:\MSD\14-600-105-002\_DisCIPLINES\_SHEETS2\_Sheets - civil\12625\_01\_COV.dwg

H  
G  
F  
E  
D  
C  
B  
A

1 2 3 4 5 6 7 8 9 10

ALBUQUERQUE  
PUBLIC SCHOOLS

CONSTRUCTION PLANS  
FOR

ELDORADO HIGH SCHOOL  
SO-19

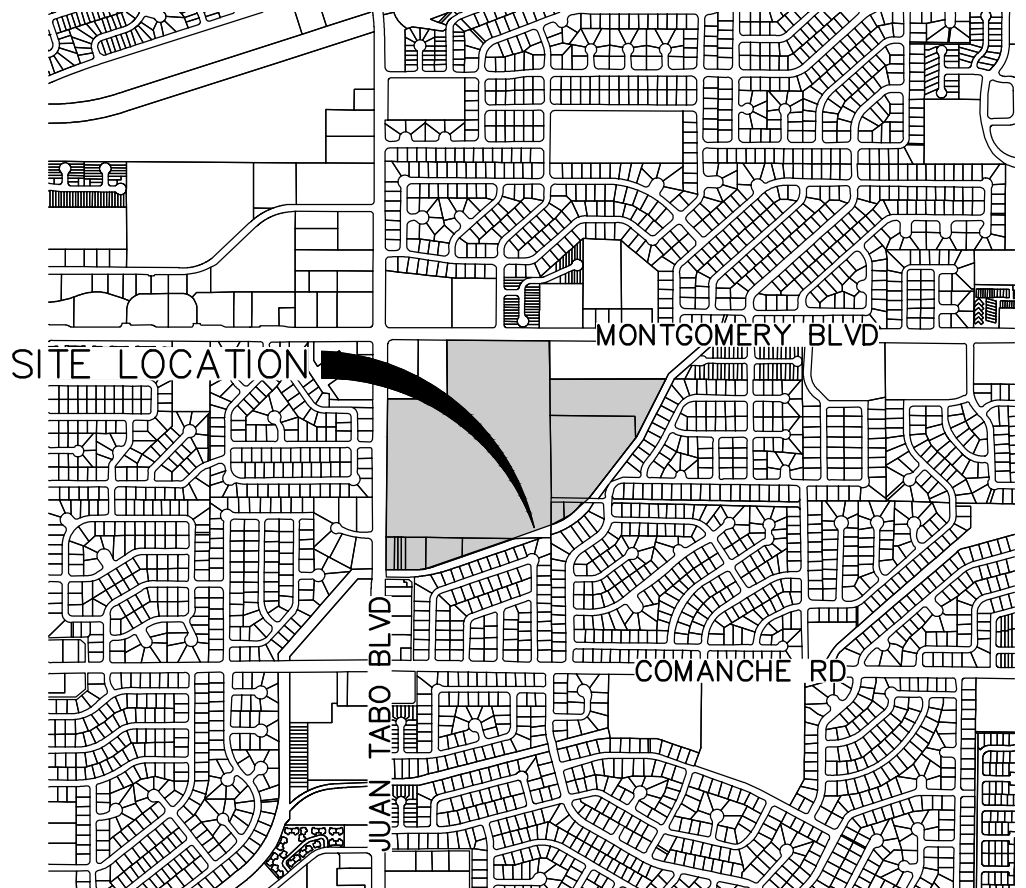
24" RCP STORM DRAINAGE IMPROVEMENTS

11300 MONTGOMERY BLVD NE  
ALBUQUERQUE, NEW MEXICO 87111



LOCATION MAP

SCALE: 1" = 250'



VICINITY MAP

ZONE ATLAS MAP NO: G-22

LIST OF SHEETS

G-001	COVER SHEET
G-002	GENERAL NOTES
C-101	DEMOLITION PLAN
C-102	OVERALL GRADING & DRAINAGE PLAN
C-103	GRADING & DRAINAGE PLAN
C-401	PLAN & PROFILE
C-501	MISC. DETAILS SHEET
C-502	MISC. DETAILS SHEET
C-503	MISC. DETAILS SHEET

SO-19 NOTES:

Private Drainage Facilities within City Right-of-Way  
Notice to Contractor  
(Special Order 19 ~ "SO-19")

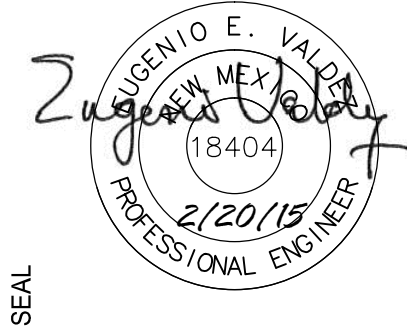
1. An excavation permit will be required before beginning any work within City Right-Of-Way.
2. All work on this project shall be performed in accordance with applicable federal, state and local laws, rules and regulations concerning construction safety and health.
3. Two working days prior to any excavation, the contractor must contact **New Mexico One Call**, dial **"811"** [or (505) 260-1990] for the location of existing utilities.
4. Prior to construction, the contractor shall excavate and verify the locations of all obstructions and underground utilities. Should a conflict exist, the contractor shall notify the engineer so that the conflict can be resolved with a minimum amount of delay.
5. Backfill compaction shall be according to City of Albuquerque specifications for public works construction.
6. Maintenance of the facility shall be the responsibility of the owner of the property being served.
7. Work on arterial streets shall be performed on a 24-hour basis.

SIGNED: \_\_\_\_\_ CITY INSPECTORS SIGNATURE

\_\_\_\_\_  
INSPECTORS NAME (PRINTED)

DATED: \_\_\_\_\_, 2014

**WILSON  
& COMPANY**  
4900 LANG AVE. NE  
ALBUQUERQUE, NM 87109  
PHONE: 505-348-4000  
FAX: 505-348-4155 SECOND FLOOR  
www.wilsonco.com



PROJECT NAME

ELDORADO HIGH SCHOOL  
SO-19

REV.	DATE	DESCRIPTION	BY

PROJECT NO:	1460010500
DESIGNED BY:	EV
DRAWN BY:	JLL
CHECKED BY:	RM
DATE:	NOV 2014

SHEET TITLE

COVER SHEET

SHEET NO:

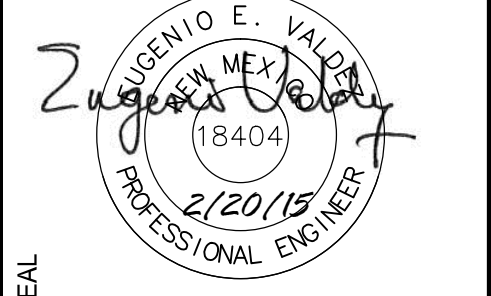
G-001

1 2 3 4 5 6 7 8 9 10



**WILSON  
& COMPANY**

4900 LANG AVE. NE  
ALBUQUERQUE, NM 87109  
PHONE: 505-348-0055  
FAX: 505-348-0055  
FAX: 505-348-4155  
[www.wilsonco.com](http://www.wilsonco.com)



ELDORADO HIGH SCHOOL  
SO-19

[illegible]

PROJECT NO:	1460010500
DESIGNED BY:	EV
DRAWN BY:	JLL
CHECKED BY:	RM
DATE:	NOV 2014

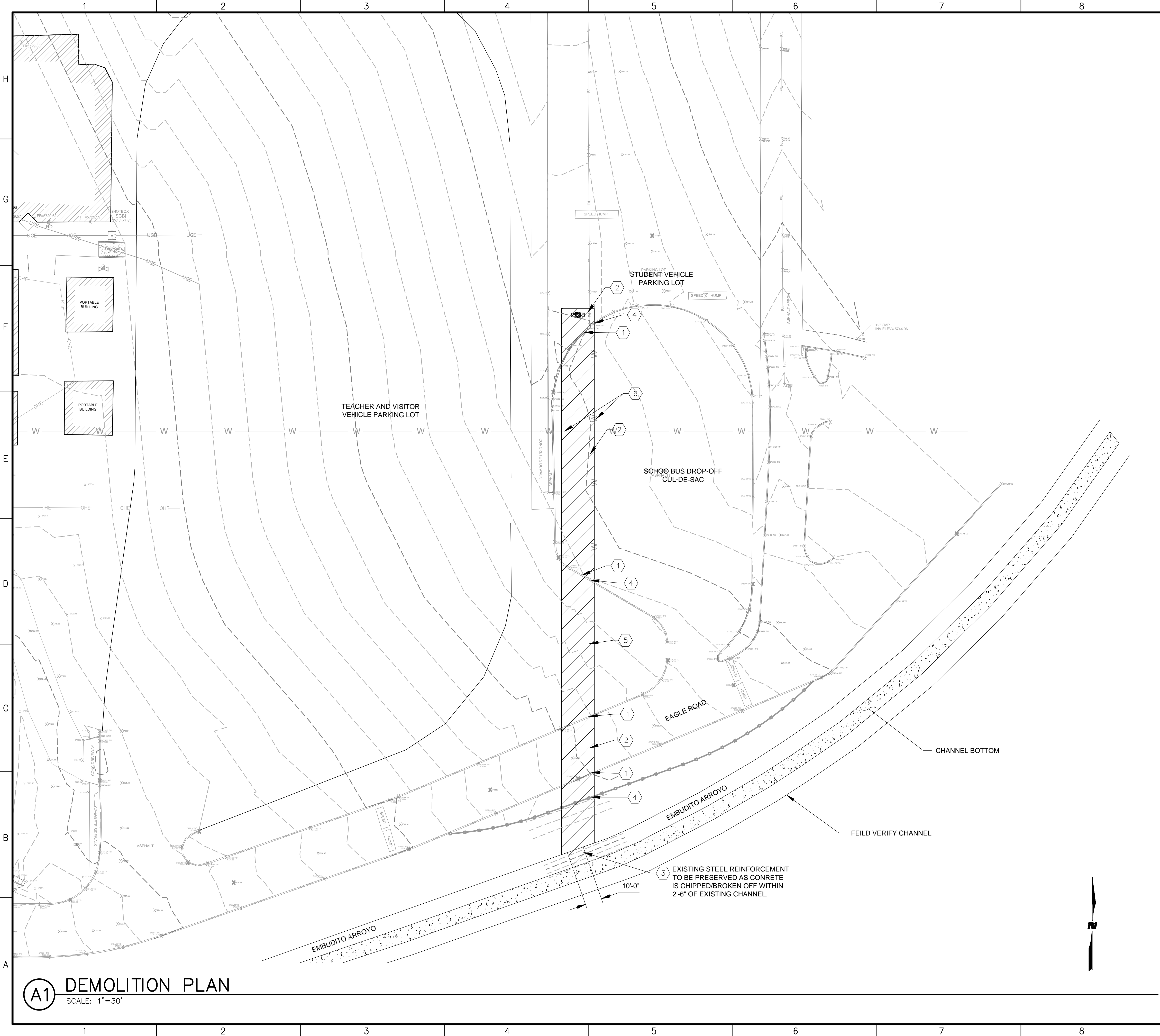
SHEET TITLE

GENERAL NOTES

G-002



M:\MSD\14-600-105-002\_Disiplines\_SHEETS\2\_Sheets - civil\14600105\_DEMO.dwg

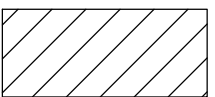


## GENERAL NOTES

- CONTRACTOR TO PROTECT EXISTING WATERLINE IN PARKING LOT.
- CONTRACTOR TO MAINTAIN SCHOOL ACCESS THROUGH EAGLE ROAD AT ALL TIMES DURING CONSTRUCTION.

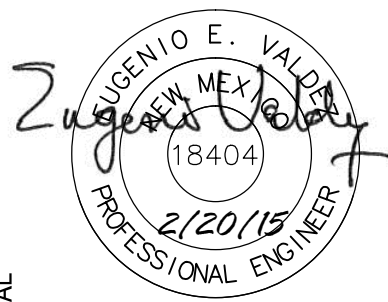
## KEYNOTES

- REMOVE TO CLOSEST JOINT AND REPLACE EXISTING CURB AND GUTTER PER DETAIL SHEET C-501
- REMOVE AND REPLACE EXISTING ASPHALT PER DETAIL SHEET C-501. REFER TO ROAD NOTE #1 ON SHEET G-002
- REMOVE AND REPLACE EXISTING CONCRETE CHANNEL. SEE SHEET C-501. SEE NEW TO EXISTING CHANNEL LINING CONSTRUCTION JOINT DETAILS FROM AMAFCA STANDARD DRAWING 102
- REMOVE, SALVAGE, AND REUSE EXISTING CHANILINK FENCE.
- REMOVE, SALVAGE, AND REUSE EXISTING GRAVEL MULCH LANDSCAPE. EXISTING LANDSCAPE FABRIC TO BE REMOVED AND REPLACED.
- CONTRACTOR TO FIELD VERIFY EXISTING WATER LINE. CONTRACTOR TO PROTECT EXISTING WATER LINE DURING CONSTRUCTION. REFER TO GENERAL NOTE #12 AND UTILITY NOTE #1 ON SHEET G-002
- PROPOSED EXISTING ASPHALT REMOVAL LIMITS DURING 24" RCP TRENCH EXCAVATION SHALL BE KEPT TO A MINIMUM TRENCH WIDTH.



MAXIMUM REMOVAL LIMITS

**WILSON & COMPANY**  
4900 LANG AVE. NE  
ALBUQUERQUE, NM 87109  
PHONE: 505-348-4000  
FAX: 505-348-4155  
www.wilsonco.com



**ELDERADO HIGH SCHOOL**  
**SO-19**

REV.	DATE	DESCRIPTION	BY

PROJECT NO: 1460010500  
DESIGNED BY: EV  
DRAWN BY: JLL  
CHECKED BY: RM  
DATE: NOV 2014

SHEET TITLE

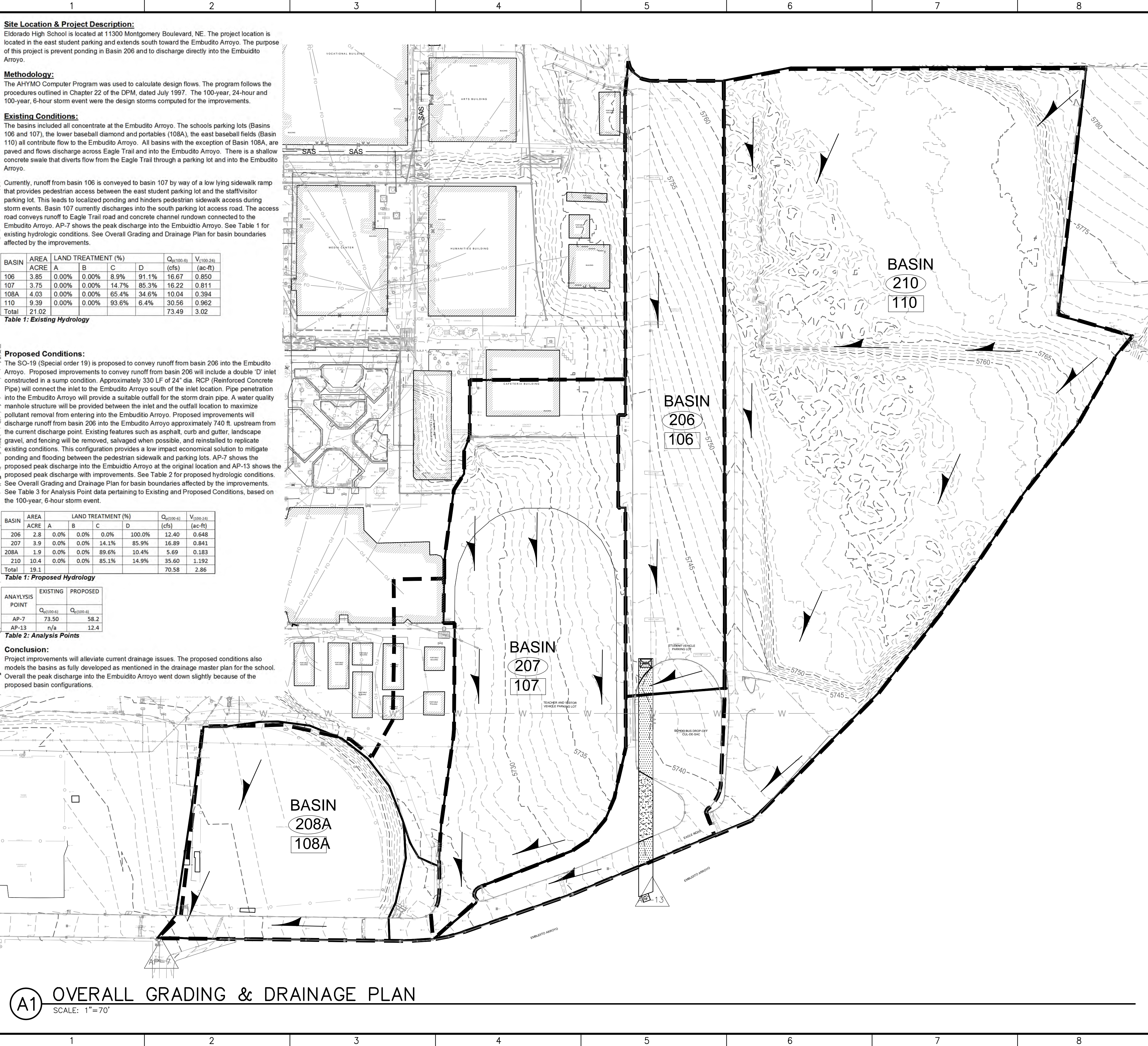
DEMOLITION PLAN

SHEET NO:

C-101



M:\MSD\14-600-105-002\_Disciplines\_SHEETS2\_Sheets - civil\14600105\_OVERALL G&D.dwg



LOCATION  
ZONE ATLAS MAP NO G-22



FLOOD INSURANCE RATE MAP  
REFERENCE: FLOOD INSURANCE STUDY  
PANEL 144 #35001C0144G



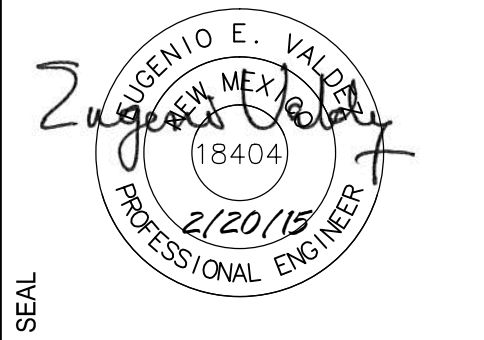
SOILS MAP

REFERENCE: [HTTP://WEBSOILSURVEY.NRCS.USDA.GOV](http://websoilsurvey.nrcs.usda.gov)

LEGEND

- PROPOSED BASIN
- EXISTING BASIN
- EXISTING INDEX CONTOUR (10')
- EXISTING NOMINAL CONTOUR (2')
- DIRECTION OF DRAINAGE (SURFACE FLOW)
- ANALYSIS POINTS (AP)

**WILSON & COMPANY**  
4900 LANG AVE. NE  
ALBUQUERQUE, NM 87109  
PHONE: 505-348-4000  
FAX: 505-348-4155 SECOND FLOOR  
[www.wilsonco.com](http://www.wilsonco.com)



ELDERADO HIGH SCHOOL  
SO-19

PROJECT NAME	BY	DESCRIPTION	DATE	REV.

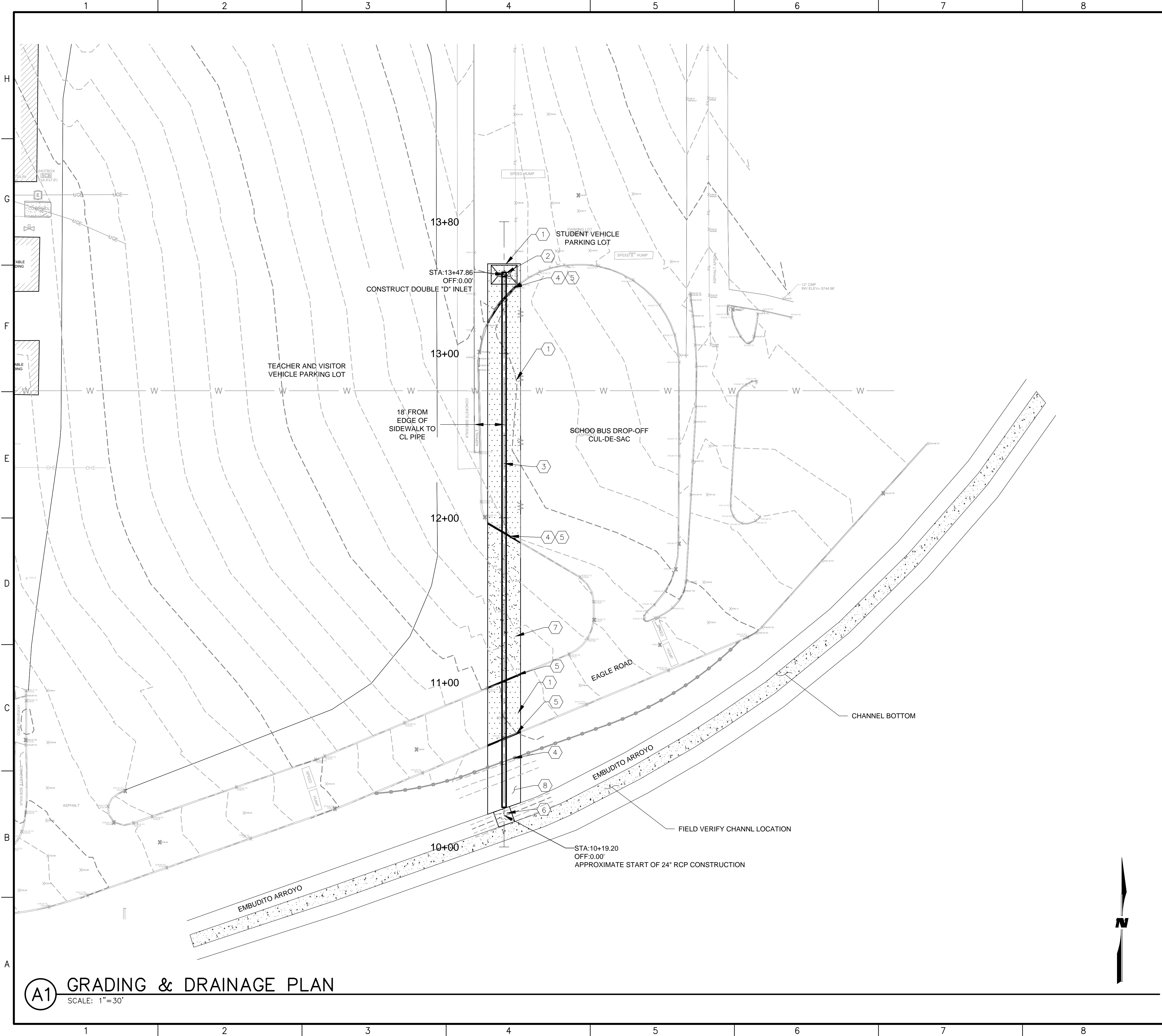
PROJECT NO: 1460010500  
DESIGNED BY: EV  
DRAWN BY: JLL  
CHECKED BY: RM  
DATE: NOV 2014

SHEET TITLE  
OVERALL GRADING & DRAINAGE PLAN

SHEET NO:  
C-102



M:\MSD\14-600-105-002\_Disclines\2\_Sheets - civil\14600\05\_G&D.dwg



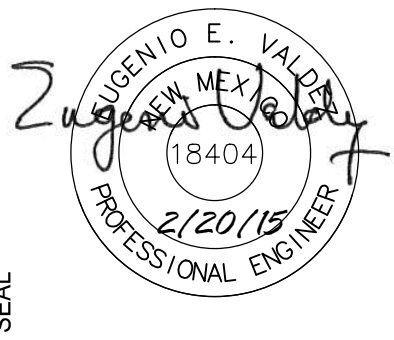
GENERAL NOTES

1. CONTRACTOR TO FIELD VERIFY EXISTING WATER LINE LOCATED IN PARKING LOT. REFER TO GENERAL NOTE #12 AND UTILITY NOTE #1 ON SHEET G-002. PROTECT EXISTING WATER LINE DURING CONSTRUCTION.
2. CONTRACTOR TO MAINTAIN SCHOOL ACCESS THROUGH EAGLE ROAD AT ALL TIMES DURING CONSTRUCTION.

KEYNOTES

1. LAY NEW ASPHALT PER DETAIL SHEET C-501
2. CONSTRUCT 1-WATER QUALITY TYPE "D" DOUBLE INLET PER DETAIL SHEET C-501
3. INSTALL 24" RCP SD PIPE.
4. INSTALL SALVAGED FENCE.
5. CONSTRUCT NEW CURB AND GUTTER PER DETAIL SHEET C-501
6. CONSTRUCT CHANNEL PENETRATION PER DETAIL SHEET C-501
7. INSTALL NEW LANDSCAPE FABRIC AND SALVAGED GRAVEL MULCH LANDSCAPE WITHIN REMOVAL LIMITS.
8. BACKFILL TRENCH TO EXISTING GROUND ELEVATION

**WILSON & COMPANY**  
4900 LANG AVE. NE  
ALBUQUERQUE, NM 87109  
PHONE: 505-348-4000  
FAX: 505-348-4155  
SECOND FLOOR  
www.wilsonco.com



PROJECT NAME

ELDORADO HIGH SCHOOL  
SO-19

REV.	DATE	DESCRIPTION	BY

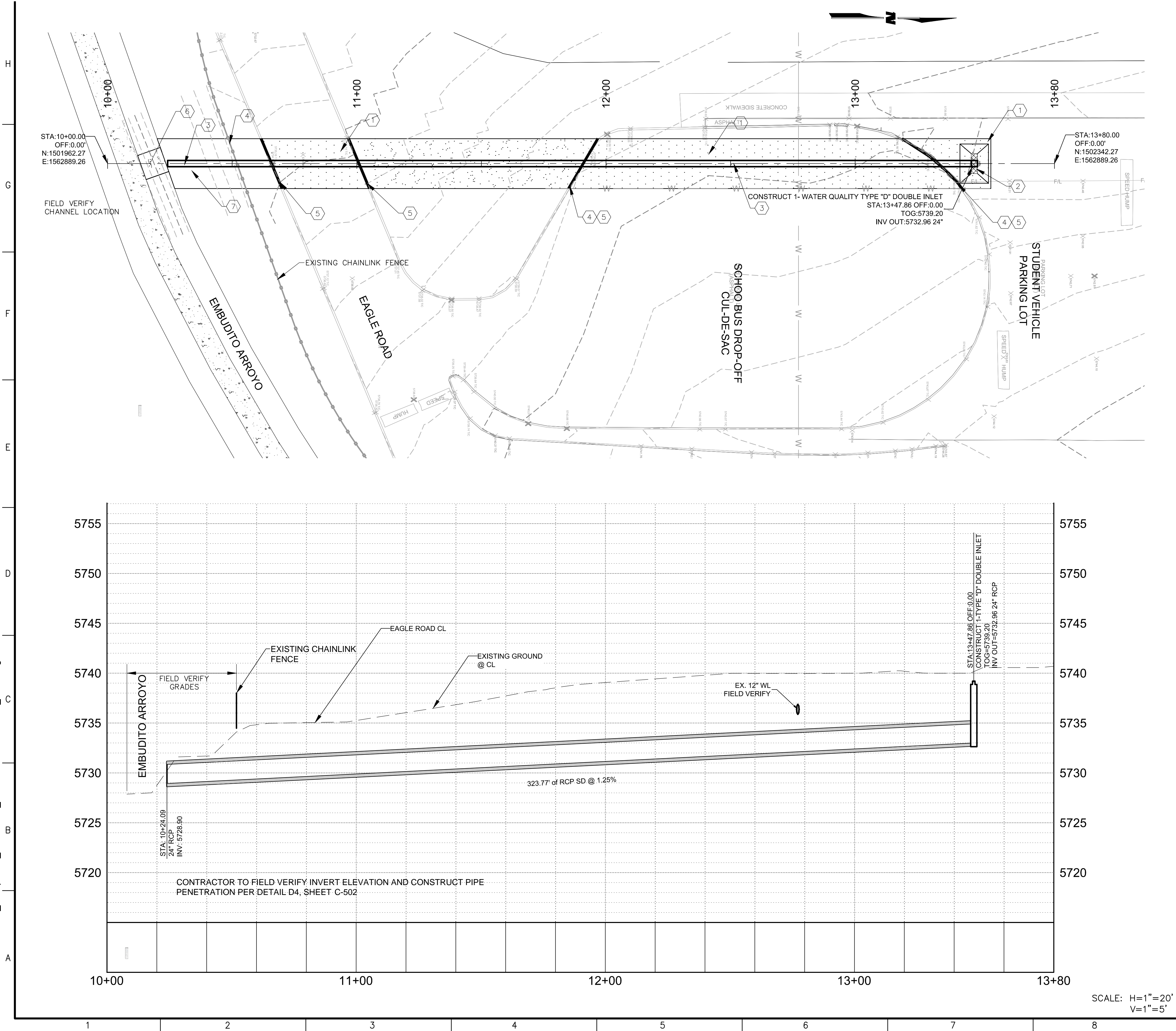
PROJECT NO:	1460010500
DESIGNED BY:	EV
DRAWN BY:	JLL
CHECKED BY:	RM
DATE:	NOV 2014

SHEET TITLE  
GRADING & DRAINAGE  
PLAN

SHEET NO:  
C-103



M:\MSD\14-600-105-002\_Disciplines\_SHEETS\2\_Sheets - civil\14600105\_PNP.dwg



GENERAL NOTES

- CONTRACTOR TO MAINTAIN SCHOOL ACCESS THROUGH EAGLE ROAD AT ALL TIMES DURING CONSTRUCTION.
- 24" RCP SHALL BE CLASS III
- DOUBLE "D" INLET TOP OF GRATE MUST BE CONSTRUCTED A MINIMUM OF 6" BELOW TOP OF EXISTING ASPHALT ELEVATION.

KEYNOTES

- LAY NEW ASPHALT PER DETAIL SHEET C-501
- CONSTRUCT 1-WATER QUALITY TYPE "D" DOUBLE INLET PER DETAIL SHEET C-501
- INSTALL 24" RCP SD PIPE.
- INSTALL SALVAGED FENCE.
- CONSTRUCT NEW CURB AND GUTTER PER DETAIL SHEET C-501
- CONSTRUCT CHANNEL PENETRATION PER DETAIL SHEET C-501
- BACKFILL TRENCH TO MATCH EXISTING CONDITIONS

CONTROL POINTS			
#509	N:1502719.58	E:1562462.96	ELEV:5729.63
#501	N:1502285.25	E:1562102.85	ELEV:5714.83
#510	N:1502783.86	E:1562584.25	ELEV:5739.51

4900 LANG AVE. NE  
ALBUQUERQUE, NM 87109  
PHONE: 505-348-4000  
FAX: 505-348-4055 FIRST FLOOR  
FAX: 505-348-4155 SECOND FLOOR  
www.wilsonco.com

ALBUQUERQUE PUBLIC SCHOOLS

PROJECT NAME  
**ELDORADO HIGH SCHOOL  
SO-19**

REV.	DATE	DESCRIPTION	BY

PROJECT NO: 1460010500

DESIGNED BY: EV

DRAWN BY: JLL

CHECKED BY: RM

DATE: NOV 2014

SHEET TITLE  
**PLAN & PROFILE**

SHEET NO:  
**C-401**





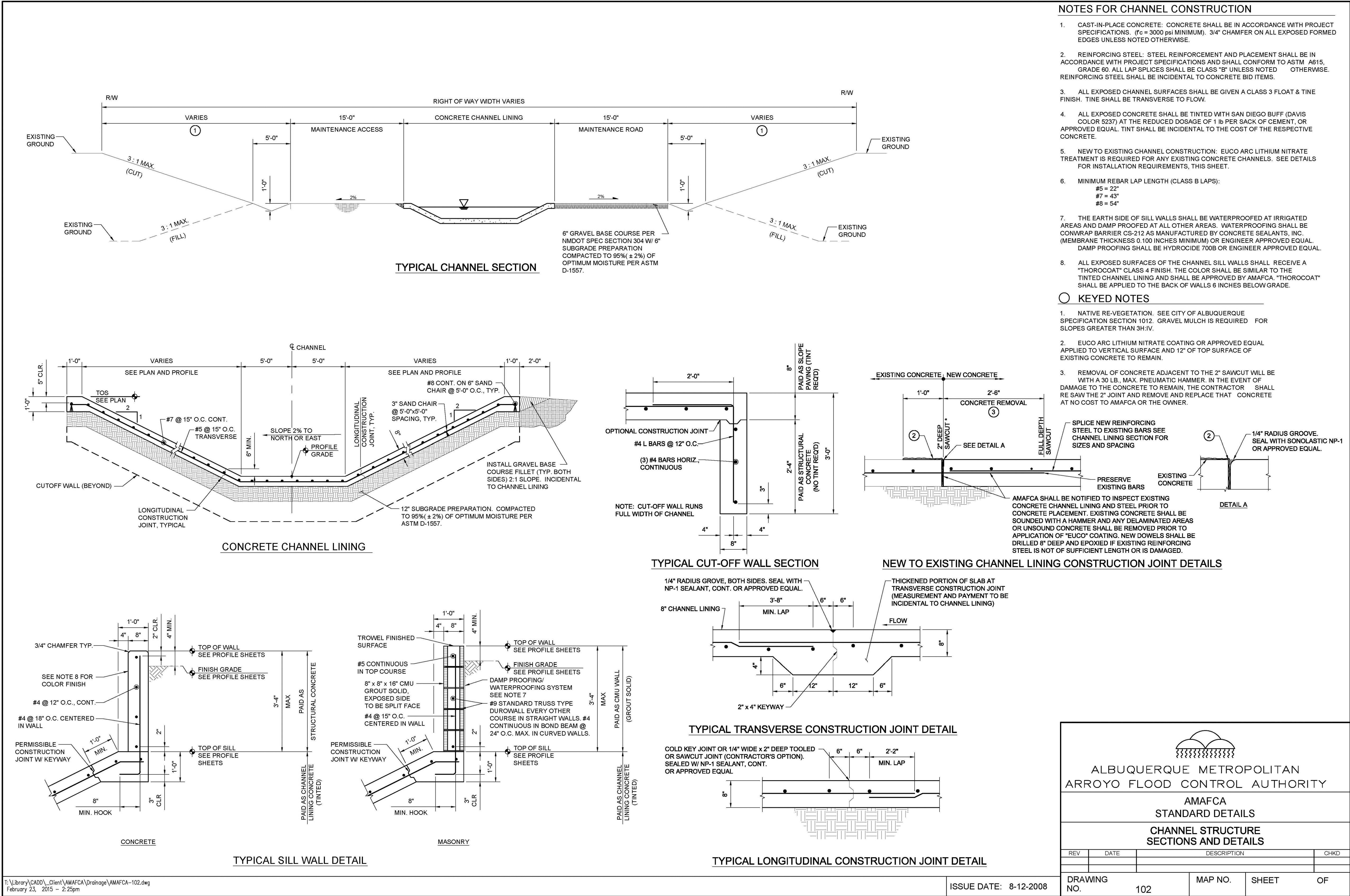






M:\MSD\14-600-105-002\_Disiplines\2\_Sheets - civil\14600105\_DTLS.dwg

H  
G  
F  
E  
D  
C  
B  
A



REV.	DATE	DESCRIPTION	BY

PROJECT NO:	1460010500
DESIGNED BY:	EV
DRAWN BY:	JLL
CHECKED BY:	RM
DATE:	NOV 2014