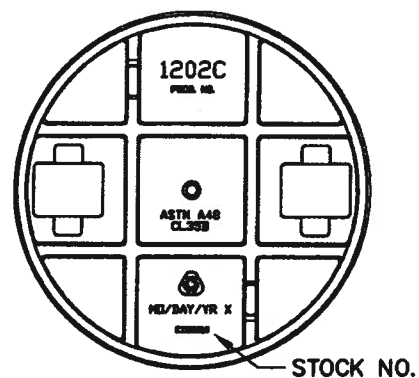
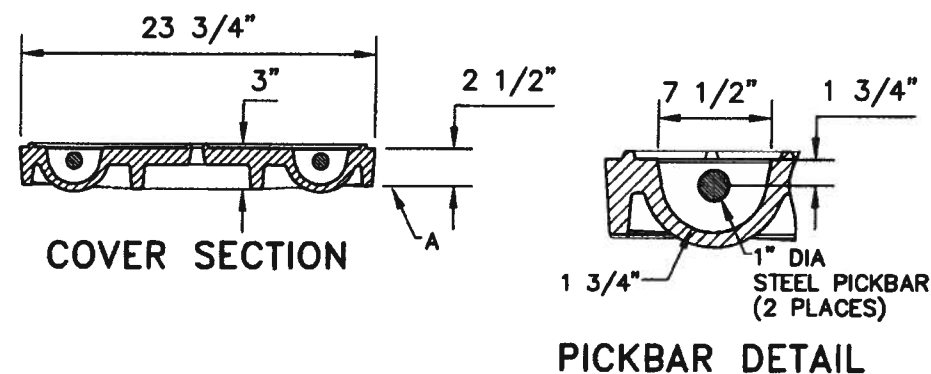


24" MANHOLE
TOP VIEW

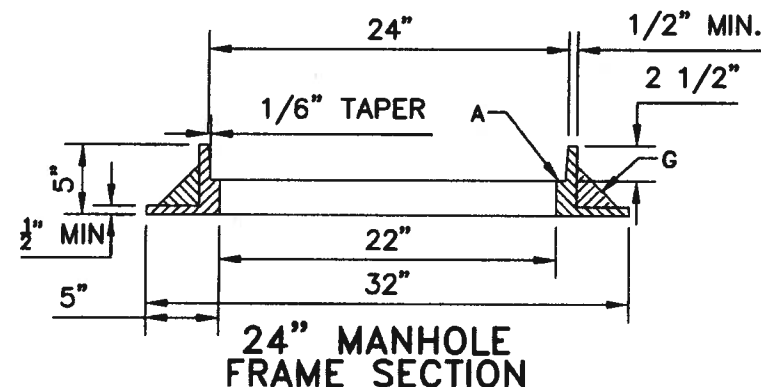


24" MANHOLE
BOTTOM VIEW



COVER SECTION

PICKBAR DETAIL



24" MANHOLE
FRAME SECTION

24" GENERAL NOTES:

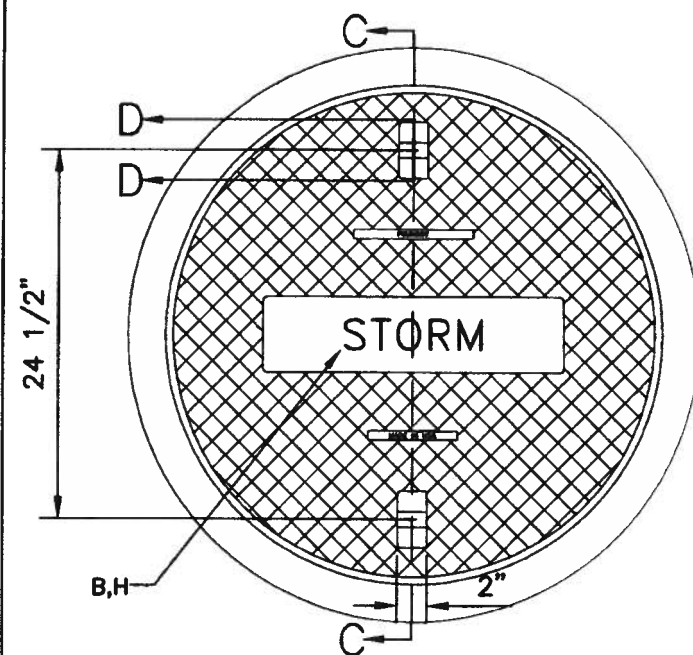
1. STANDARD 24" CAST IRON M.H. FRAME AND COVER.
WEIGHTS: COVER = 180 LBS., FRAME = 145 LBS.
TOTAL = 325 LBS. (TOLERANCE = $\pm 5\%$)
2. REFERENCE SPEC. SECTION 130.
3. ONLY PRODUCTS CAST IN THE USA WILL BE ACCEPTABLE.

36" GENERAL NOTES:

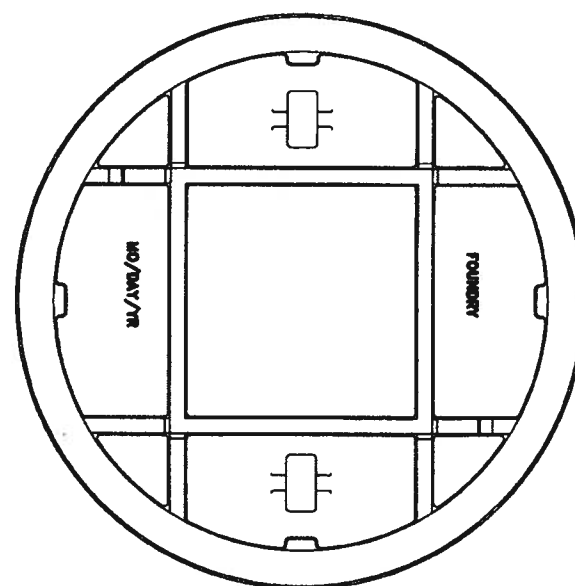
1. STANDARD 36" CAST IRON M.H. FRAME AND COVER.
WEIGHTS: COVER = 355 LBS., FRAME = 315 LBS.
TOTAL = 670 LBS. (TOLERANCE = $\pm 5\%$)
2. REFERENCE SPEC. SECTION 130.
3. ONLY PRODUCTS CAST IN THE USA WILL BE ACCEPTABLE.

CONSTRUCTION NOTES:

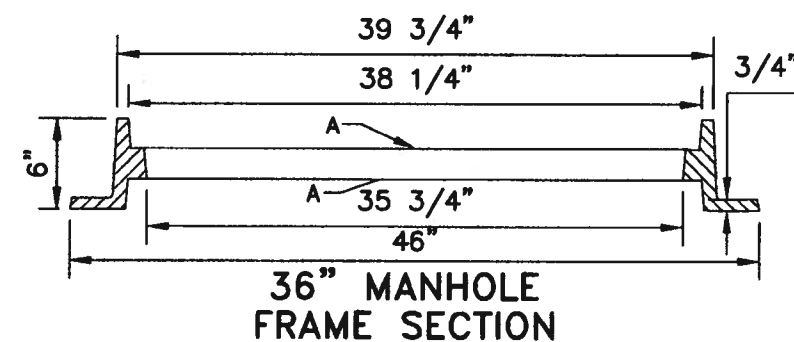
- A. MACHINED OR GROUND BEARING SURFACES.
- B. "STORM" CAST ON COVER TO IDENTIFY STORM DRAINAGE.
- C. LETTER SIZE TO BE 1 1/4" IN HEIGHT RAISED LETTERING.
- D. LETTER SIZE TO BE 3/4" IN HEIGHT RAISED LETTERING.
- E. LETTER SIZE TO BE 3/8" MIN. IN HEIGHT RAISED LETTERING.
- F. 3/4" DIA VENT HOLE REQUIRED.
- G. GUSSETS OPTIONAL IF REQUIRED BY MANUFACTURER.
- H. 2" LETTERS (RECESSED FLUSH).
- I. LETTER SIZE TO BE 1" IN HEIGHT RAISED LETTERING.



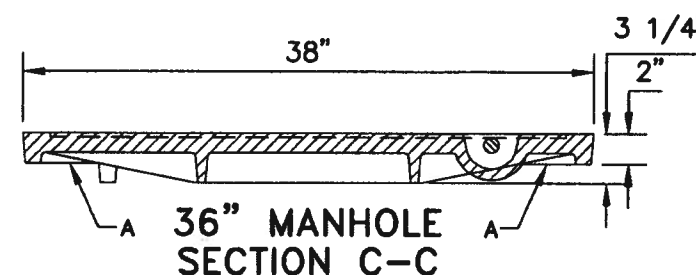
36" MANHOLE
TOP VIEW



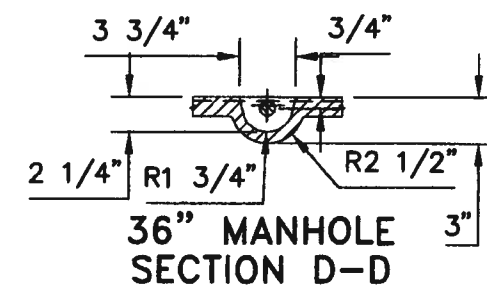
36" MANHOLE
BOTTOM VIEW



36" MANHOLE
FRAME SECTION



36" MANHOLE
SECTION C-C



36" MANHOLE
SECTION D-D

REVISIONS	CITY OF ALBUQUERQUE
	STORM
	MANHOLE FRAME AND COVERS
	DWG. 2110 JANUARY 2011