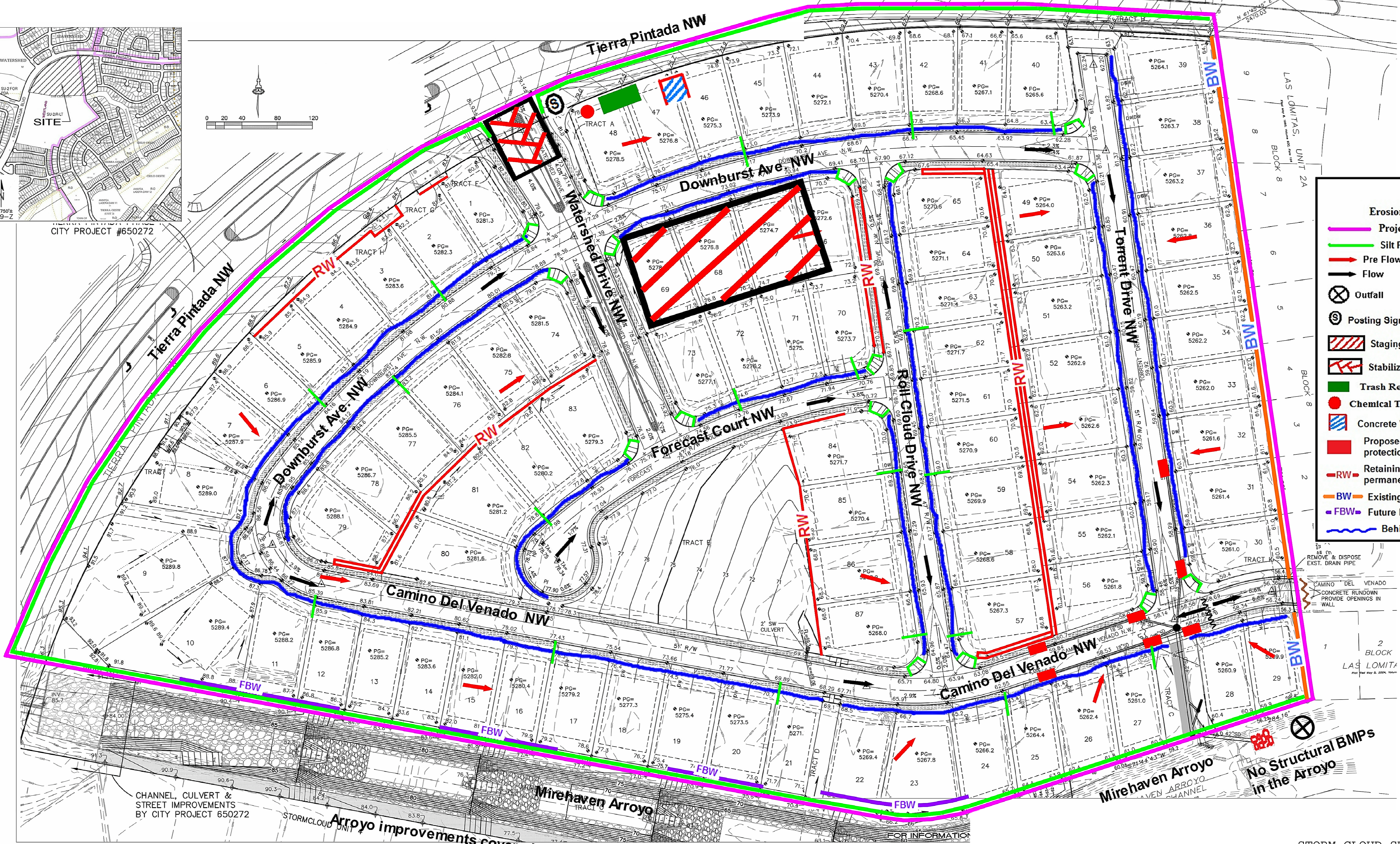
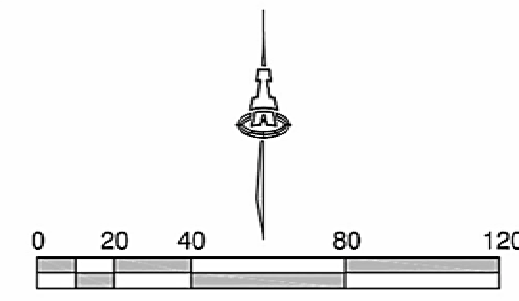
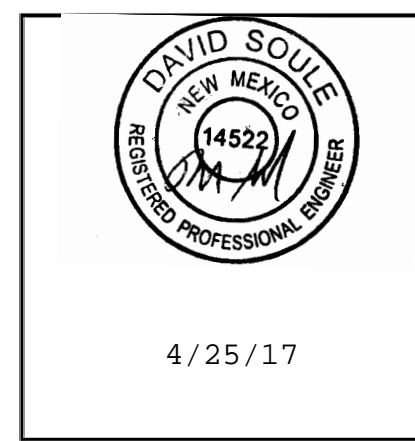




Inspections Plus, Inc.

Engineer Stamp



**Legend**

**Erosion Sediment Control Plan**

- Project Perimeter & Disturbed Area
- Silt Fence
- Pre Flow
- Flow
- Outfall
- Posting Sign
- Staging Area
- Stabilized Construction Entrance
- Trash Receptacle
- Chemical Toilet
- Concrete Washout
- Proposed Storm Inlet - Install protection when the inlet becomes
- Retaining Wall to be installed for permanent BMP control
- Existing Block Wall
- Future Block Wall
- Behind Curb Swale Cut

STORM CLOUD SUBDIVISION UNIT 5

Receiving Waters and Critical Habitat: Rio Grande is located 3.6 miles to the NorthEast.

Impairments: E. coli, Dissolved Oxygen, PCBs in Fish Tissue, Water Temperature

Grade: Before and After 1% to 2.5%