

AMENDED 02-27-23

POND P2N		
Contour	Area	Volume
5181.50	2237	
5181.00	2000	1059 CF
5180.00	1297	1649 CF
5179.00	770	1034 CF
5178.00	253	512 CF
TOTAL VOL.		3741 CF

City of Albuquerque
Planning Department
Development Review Services
HYDROLOGY SECTION
APPROVED
DATE: 03/09/23
BY: *Renee Brumette*
HydroTeam # H10D030

AMENDED 02-02 26
Added:
Phase Line
Erosion Control
Sediment Waddles

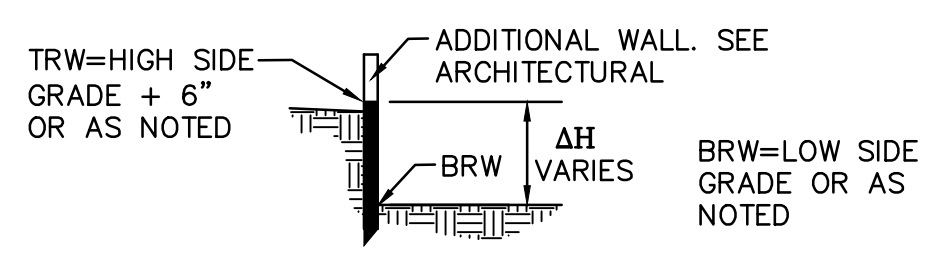
SEE SHEET CG-102

S.O.19 : NOTICE TO CONTRACTORS

- PRIVATE DRAINAGE FACILITIES WITHIN CITY RIGHT-OF-WAY**
- Build sidewalk culvert per COA STD DWG 2236.
 - Contact Storm Drain Maintenance at (505) 857-8033 to schedule a meeting prior to forming.
 - An excavation permit will be required before beginning any work within City Right-Of-Way.
 - All work on this project shall be performed in accordance with applicable federal, state and local laws, rules and regulations concerning construction safety and health.
 - Two working days prior to any excavation, the contractor must contact **New Mexico One Call, dial "811"** [or (505) 260-1990] for the location of existing utilities.
 - Prior to construction, the contractor shall excavate and verify the locations of all obstructions. Should a conflict exist, the contractor shall notify the engineer so that the conflict can be resolved with a minimum amount of delay.
 - Backfill compaction shall be according to traffic/street use.
 - Maintenance of the facility shall be the responsibility of the owner of the property being served.
 - Work on arterial streets may be required on a 24-hour basis.
 - Contractor must contact Storm Drain Maintenance at (505) 857-8033 to schedule a construction inspection. For excavating and barricading inspections, contact Construction Coordination at (505) 924-3416.

KEYED NOTES

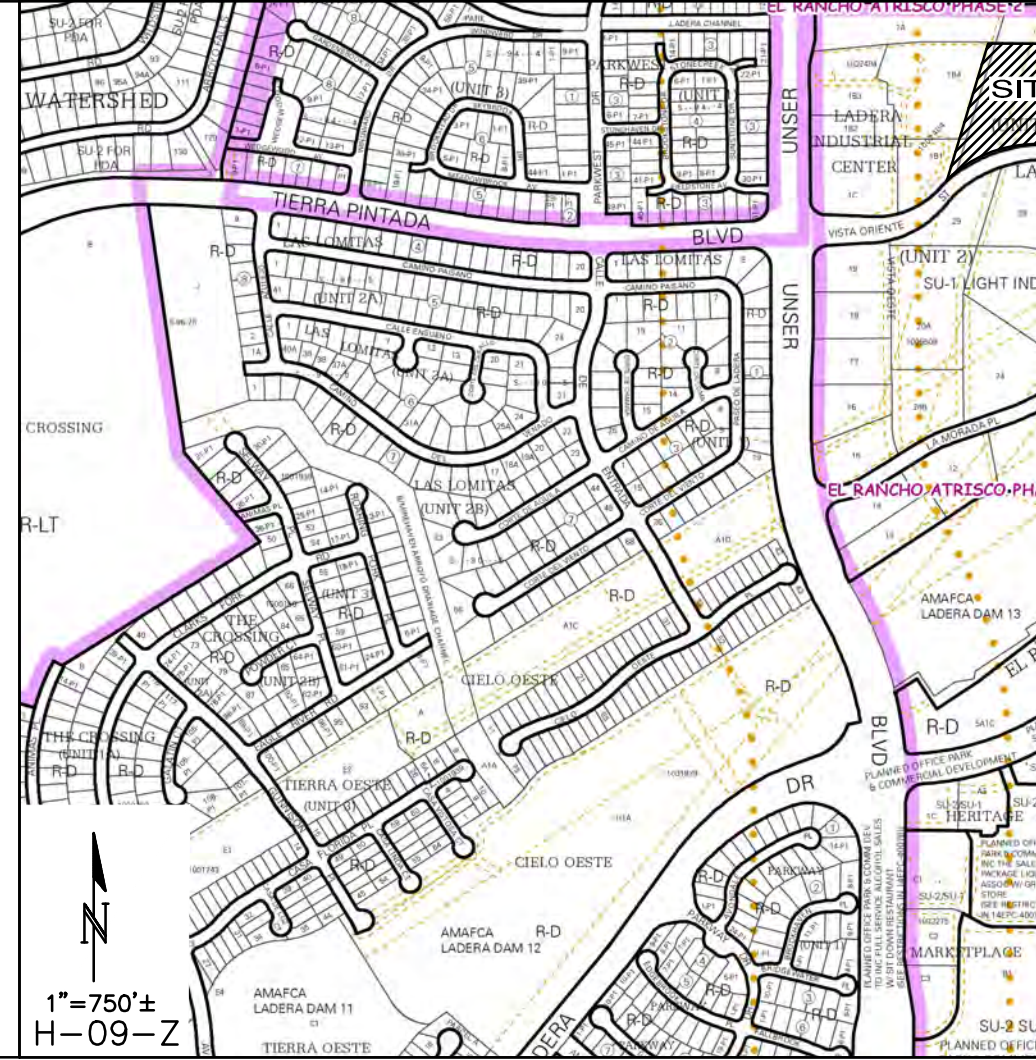
- KEYED NOTES ARE REFERENCED ON SHEETS CG-101 AND CG-102. NOT ALL NOTES ARE USED ON EACH SHEET.
- CONSTRUCT ENTRANCE DRIVES, CONCRETE VALLEY GUTTER, PUBLIC SIDEWALK, AND ADA COMPLIANT RAMPS PER COA STD. DETAILS AND SPECIFICATIONS. SEE CP-101 FOR ADDITIONAL INFORMATION.
 - CONSTRUCT NEW PAVING AT ELEVATIONS SHOWN. SEE CP-101 FOR ADDITIONAL INFORMATION FOR MATERIAL, EXTENTS, JOINTS, AND PAVING SECTIONS.
 - CONSTRUCT 6" HIGH CURB (HEADER OR MEDIAN CURB AND GUTTER - OWNER'S OPTION). NOTE: ENGINEER RECOMMENDS MEDIAN CURB AND GUTTER FOR CONCENTRATED FLOWPATHS.
 - CONSTRUCT 2' WIDE CONC. ALLEY GUTTER. SEE CG-501 FOR SECTION.
 - SEE CG-501 FOR SECTION THROUGH EAST PROPERTY LINE.
 - 0.5' NODDED CONTOURS ARE SHOWN DASHED WHERE NECESSARY TO CLARIFY GRADING CONCEPT.
 - BUILDING AND OVERHEAD CANOPY ROOF DISCHARGE DIRECTION. (OWNER'S OPTION - ENGINEER RECOMMENDS CONCRETE SPLASHPAD FOR CONCENTRATED ROOF DISCHARGE TO ASPHALT PAVEMENT.) SEE BUILDING PLANS FOR SPECIFIC ROOF DISCHARGE INFORMATION.
 - PROVIDE 2' WIDE OPENING(S) IN CURB TO PASS FLOW. INSTALL 4'X4'X8" DEEP ROCK EROSION PROTECTION AT CURB OPENINGS.
 - CONSTRUCT STORMWATER QUALITY RETENTION POND AT ELEVATIONS AND VOLUMES SHOWN. ALL STORMWATER QUALITY PONDING VOLUMES REQUIRE VERIFICATION AS PART OF AS-BUILT ENGINEER'S CERTIFICATION PROCEDURE. PONDS WHICH DO NOT PROVIDE THE REQUIRED VOLUME WILL BE CORRECTED AT CONTRACTOR'S EXPENSE.
 - CONSTRUCT PERIMETER RETAINING/PRIVACY WALLS TO ACHIEVE GRADE DIFFERENCE SHOWN. SEE ARCHITECTURAL FOR DETAILS, ADDITIONAL WALL HEIGHT, FOOTING, GUARDRAIL, REINFORCING, ETC. NO STRUCTURE OR FOOTING MAY BE CONSTRUCTED ON ADJACENT PROPERTIES WITHOUT ADJACENT PROPERTY OWNER PERMISSION.
 - SEE CG-102 FOR ENLARGED PLAN OF OUTFALL TO VISTA ORIENTE STREET NW.
 - SEE CG-501 FOR ROCK EROSION PROTECTION DETAIL.
 - COORDINATE GRADE TRANSITION WITH OWNER. TYPICAL.



LEGEND

- 5105.85' EXISTING SPOT ELEVATION
- - - 5110' EXISTING CONTOUR
- - - 12' PROPOSED CONTOUR (1' INCREMENT)
- - - 10.5' PROPOSED CONTOUR (0.5' INCREMENT)
- ◆ 08.9' PROPOSED SPOT ELEVATION
- FLOW ARROW
- ▭ PROPOSED STORMWATER QUALITY RETENTION POND LIMITS
- ← ROOF / CANOPY DISCHARGE DIRECTION
- ~ GRADE BREAK
- ▨ EROSION CONTROL (TO EXTENTS SHOWN)
- ▬ PERIMETER RETAINING WALL (>16" RETAINING)
- ▬ PERIMETER WALL (<16" RETAINING)

VICINITY MAP



ISAACSON & ARFMAN, P.A.
Consulting Engineering Associates
128 Monroe Street N.E.
Albuquerque, New Mexico 87108
Ph. 505-268-8828 www.isaacson.com

2278 CG-101 NOMAD.dwg Feb 27, 2023

This design, calculation, or specification is owned by and remain the property of Isaacson & Arfman, P.A. and no part thereof shall be utilized by any person, firm or corporation for any purpose whatsoever except with the written permission of Isaacson & Arfman, P.A. ©

ABQ RV & BOAT STORAGE
LADERA ENTERPRISES LLC

GRADING & DRAINAGE PLAN 1 OF 2

Date:	09-29-21	No. Revision:	Date:	Job No.:
Drawn By:	BJB	3 SITE PLAN REVISIONS	07/08/21	2278
Ckd By:	FCA	4 ADD RV DUMP	07/12/21	CG-101
		5 REROUTE WTR LINES	08/10/21	
		6 REVISE SAS INV / ALIGN	08/24/21	
		7 SITE PLAN REVISIONS	02/24/22	SH. OF

