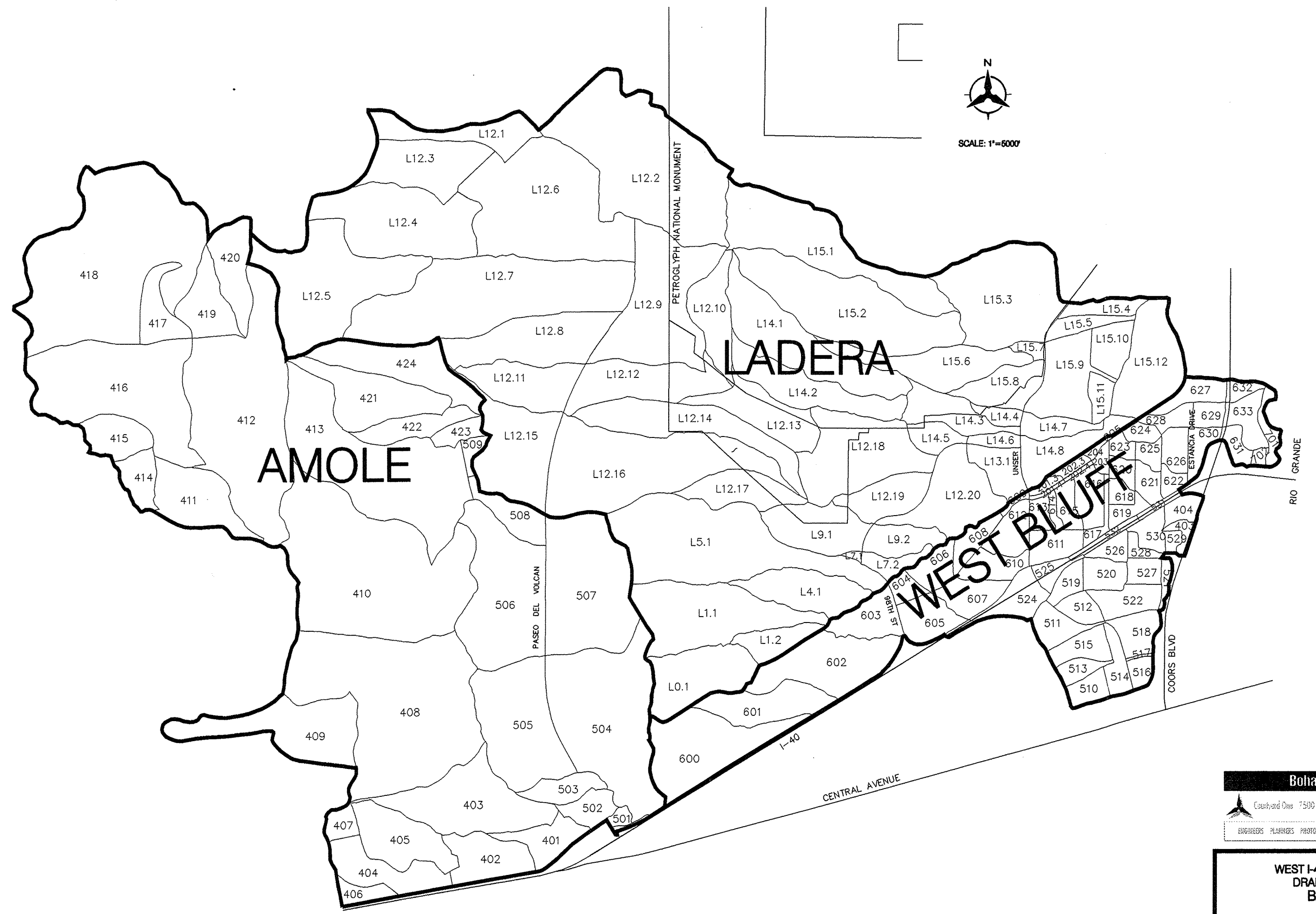


Bohman & Huston
 CONSULTING ENGINEERS
 7500 JEFFERSON RE. ALBUQUERQUE, NEW MEXICO 87119
 ENGINEERS PLANNERS PROGRAMMERS SURVEYORS SOFTWARE DEVELOPERS

**WEST I-40 DIVERSION DMP
 DRAINAGE REPORT
 VICINITY MAP
 DECEMBER 1999**

FIGURE 1



Bohannon & Huston
 CONSULTING ENGINEERS
 7500 JEFFERSON NE ALBUQUERQUE, NEW MEXICO 87109
 ENGINEERS PLANNERS PROGRAMMERS SURVEYORS SOFTWARE DEVELOPERS

**WEST I-40 DIVERSION DMP
 DRAINAGE REPORT
 BASIN MAP
 MAY 1986**

FIGURE 2

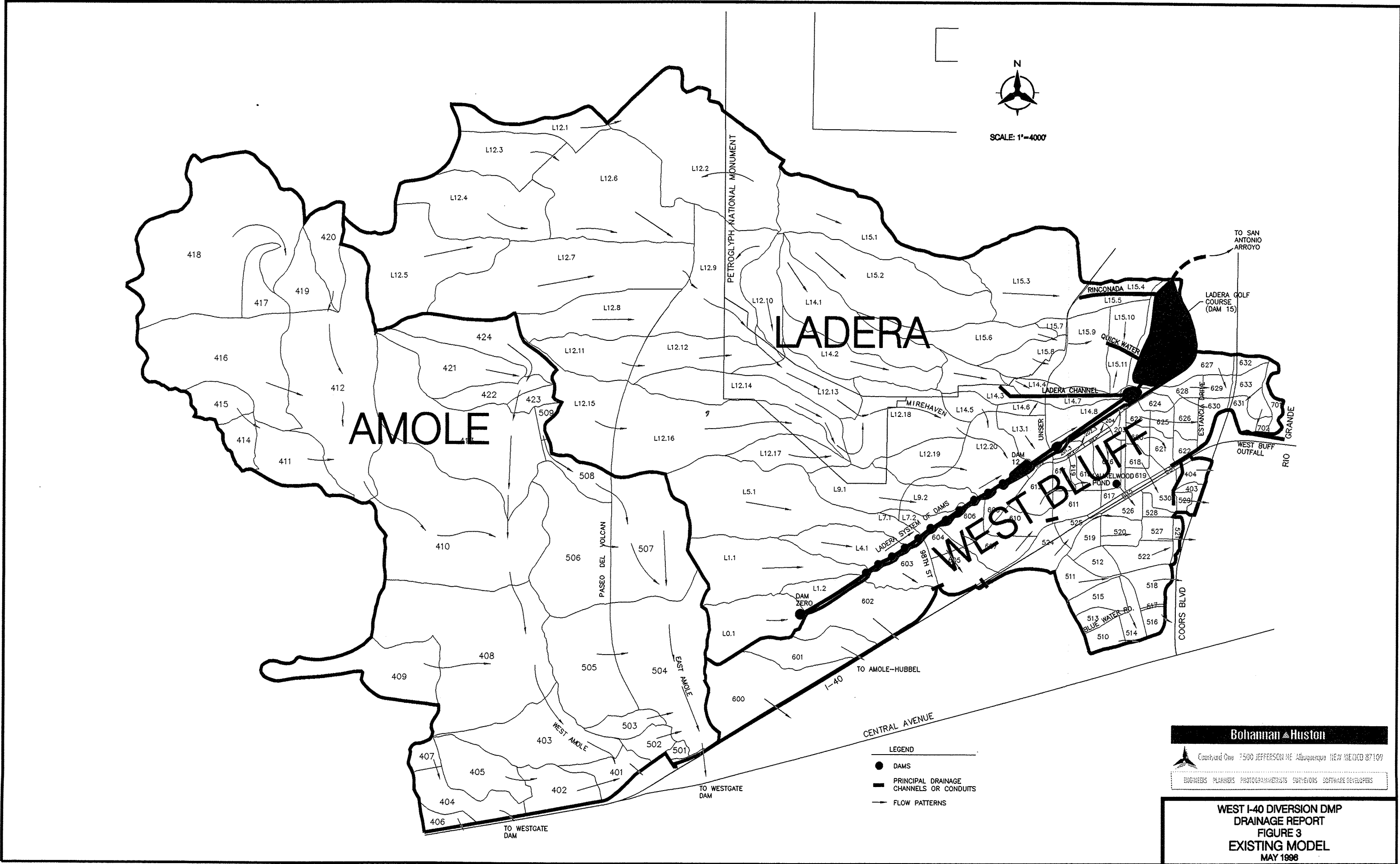
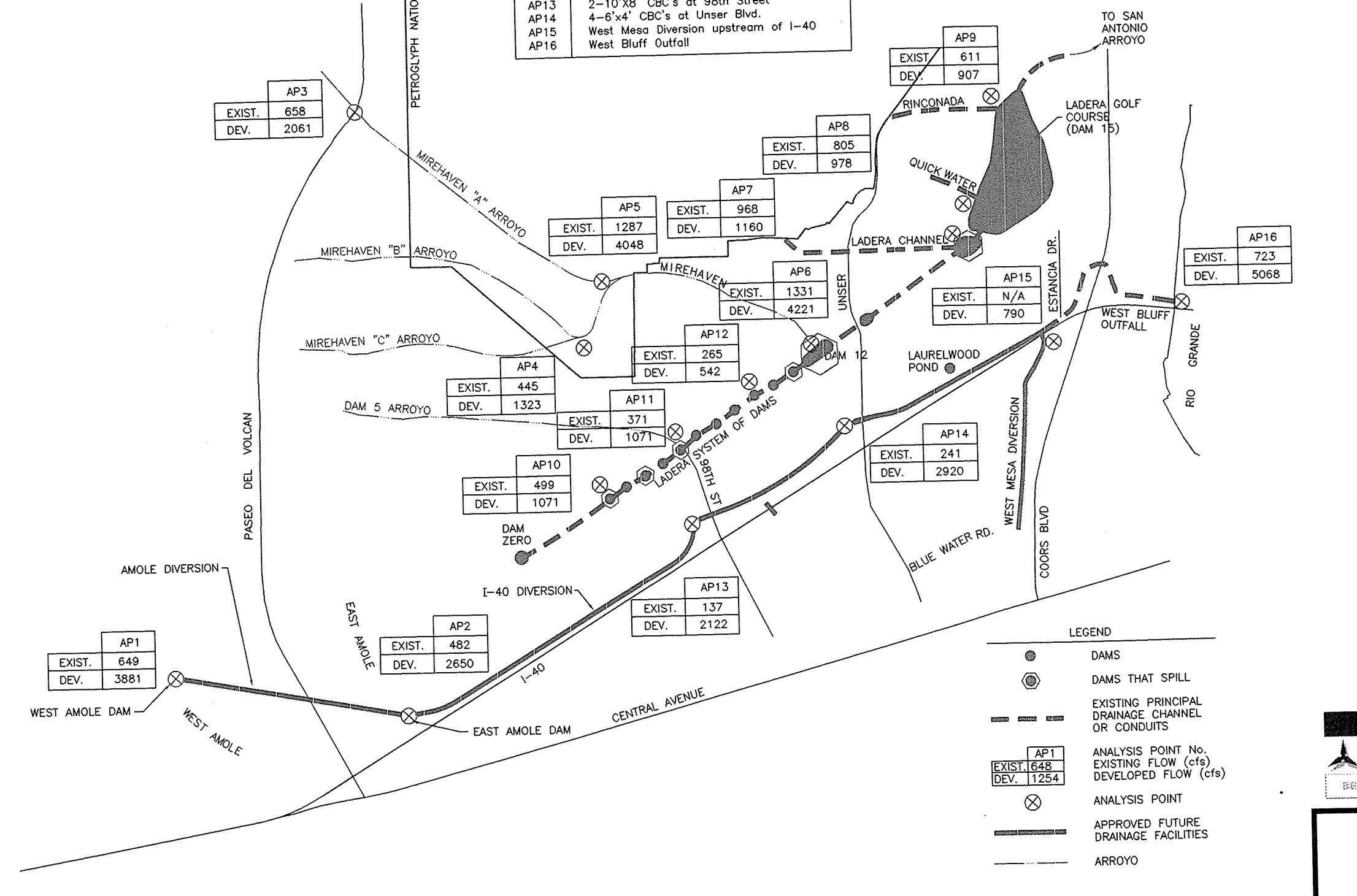
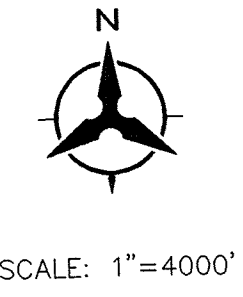


FIGURE 3

ANALYSIS PT	DESCRIPTION OF ANALYSIS POINT
AP1	West Amole at West Amole dam site
AP2	East Amole at East Amole dam site
AP3	Mirehaven Arroyo at Paseo Del Volcan
AP4	Mirehaven "B" at Training Dike
AP5	Mirehaven A + B + C
AP6	Mirehaven at Dam 12
AP7	Ladera Channel into Dam 14
AP8	Quickwater Channel into Dam 15
AP9	Rinconada Channel into Dam 15
AP10	Ladera Channel into Dam 1
AP11	Ladera Channel into Dam 5
AP12	Ladera Channel into Dam 9
AP13	2-10' X8' CBC's at 98th Street
AP14	4-6' X4' CBC's at Unser Blvd.
AP15	West Mesa Diversion upstream of I-40
AP16	West Bluff Outfall



LEGEND	
	DAMS
	DAMS THAT SPILL
	EXISTING PRINCIPAL DRAINAGE CHANNEL OR CONDUITS
	ANALYSIS POINT No. EXISTING FLOW (cfs) DEVELOPED FLOW (cfs)
	ANALYSIS POINT
	APPROVED FUTURE DRAINAGE FACILITIES
	ARROYO

Bohannon & Huston
 CONSULTING ENGINEERS
 7500 JEFFERSON HEE ARLINGTON, TEXAS 76010
 ENGINEERS PLANNERS PROGRAMMERS SURVEYORS SOFTWARE DEVELOPERS

WEST I-40 DIVERSION DMP
 DRAINAGE REPORT
 EXISTING & DEVELOPED
 KEY 100-YEAR FLOWS
 JANUARY 1997

FIGURE 6

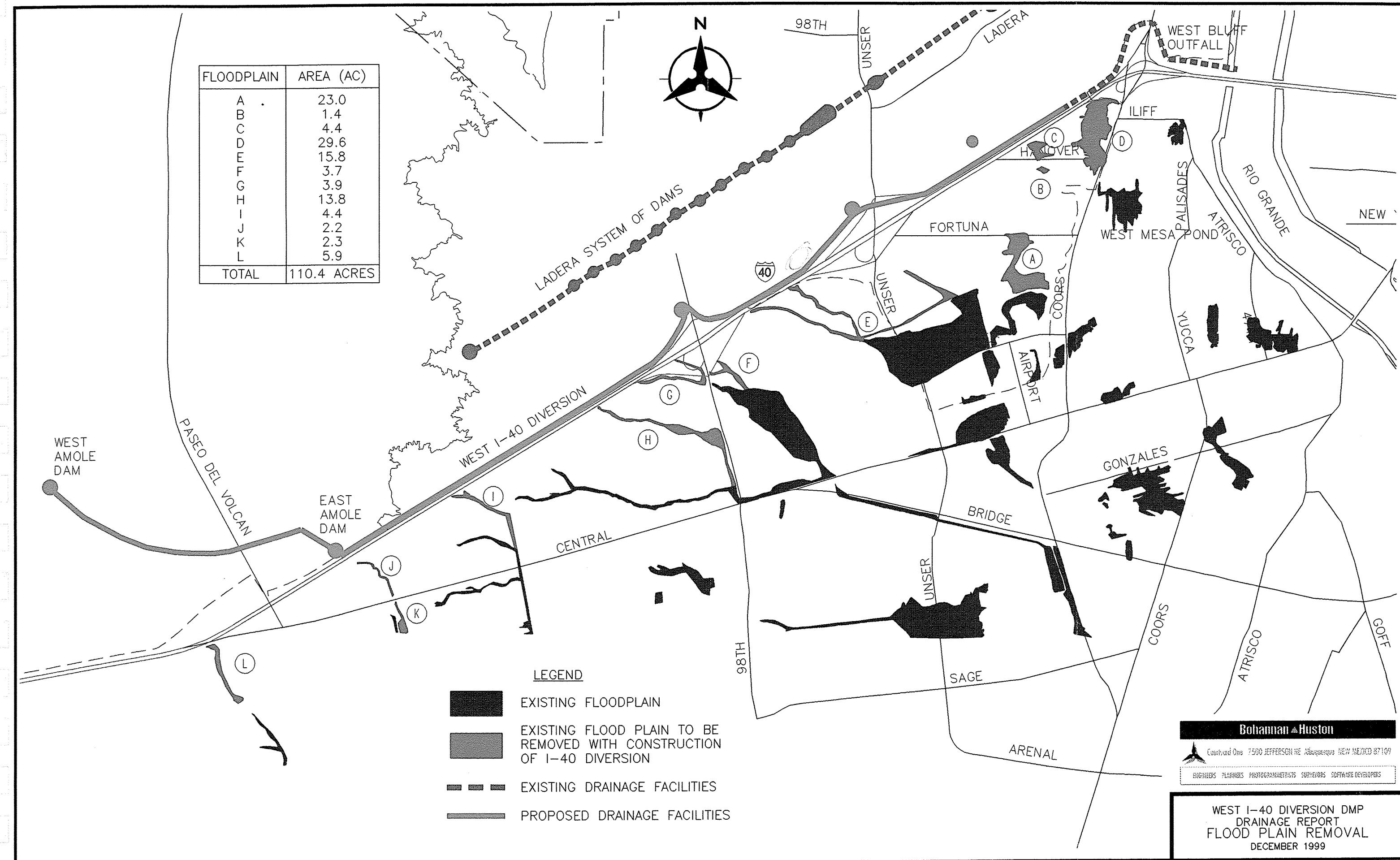


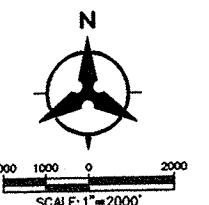
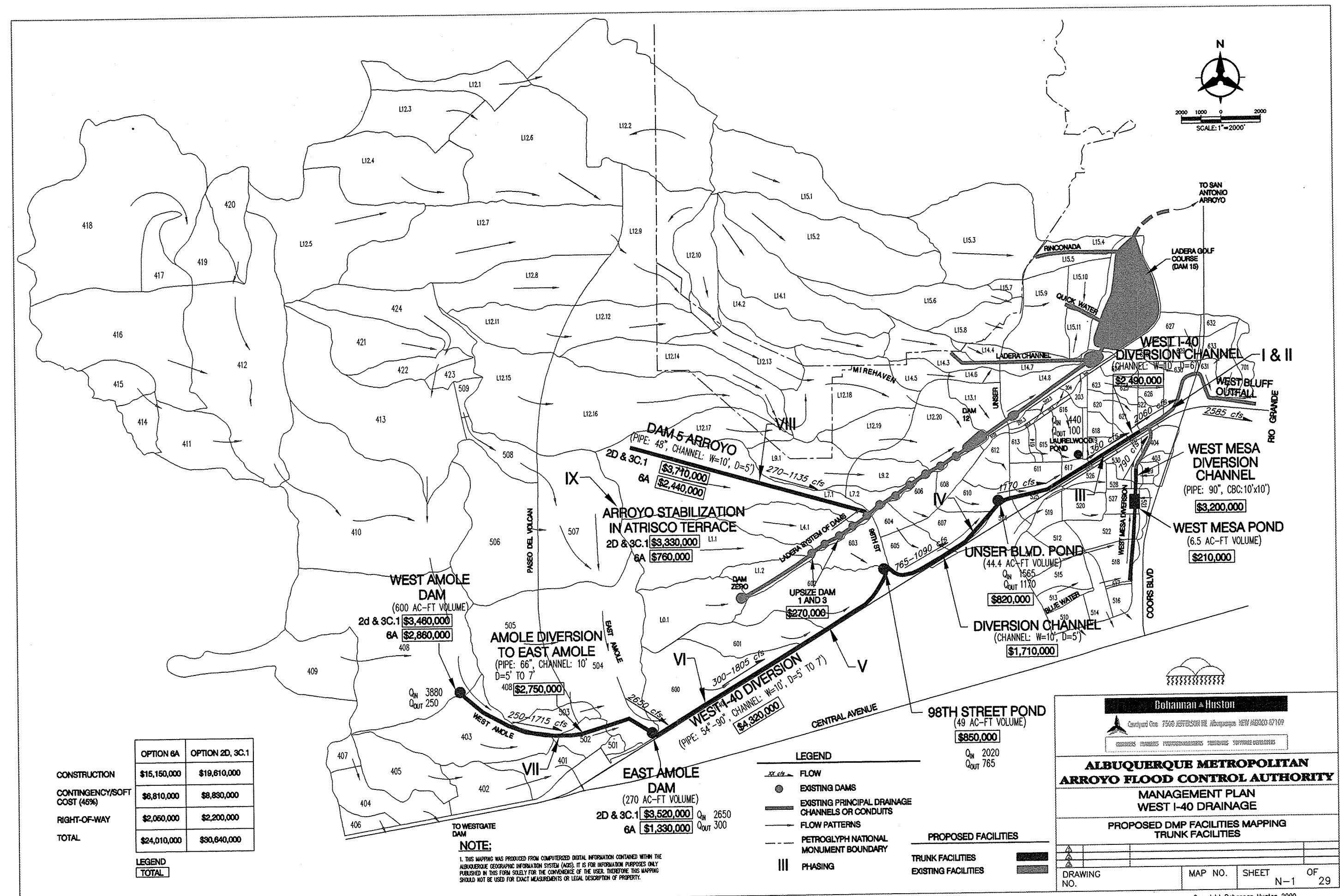
FIGURE 3A



FIGURE 4



FIGURE 5



	OPTION 6A	OPTION 2D, 3C.1
CONSTRUCTION	\$16,150,000	\$19,610,000
CONTINGENCY/SOFT COST (45%)	\$6,810,000	\$8,830,000
RIGHT-OF-WAY	\$2,060,000	\$2,200,000
TOTAL	\$24,010,000	\$30,640,000

LEGEND
TOTAL

NOTE:
1. THIS MAPPING WAS PRODUCED FROM COMPUTERIZED DIGITAL INFORMATION CONTAINED WITHIN THE ALBUQUERQUE GEOGRAPHIC INFORMATION SYSTEM (AGIS). IT IS FOR INFORMATION PURPOSES ONLY. PUBLISHED BY THIS FIRM SLEIGHTLY FOR THE CONVENIENCE OF THE USER. THEREFORE, THIS MAPPING SHOULD NOT BE USED FOR EXACT MEASUREMENTS OR LEGAL DESCRIPTION OF PROPERTY.

LEGEND
 - - - - - FLOW
 ● EXISTING DAMS
 ○ EXISTING PRINCIPAL DRAINAGE CHANNELS OR CONDUITS
 — FLOW PATTERNS
 - - - - - PETROGLYPH NATIONAL MONUMENT BOUNDARY
 III PHASING

PROPOSED FACILITIES
 TRUNK FACILITIES
 EXISTING FACILITIES

Bohannon + Huston
 Certified City Engineer Jeffrey R. Bohannon No. 1562003 07/1/99
 Certified City Engineer Jeffrey R. Bohannon No. 1562003 07/1/99

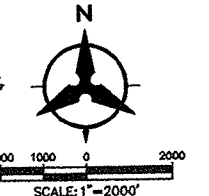
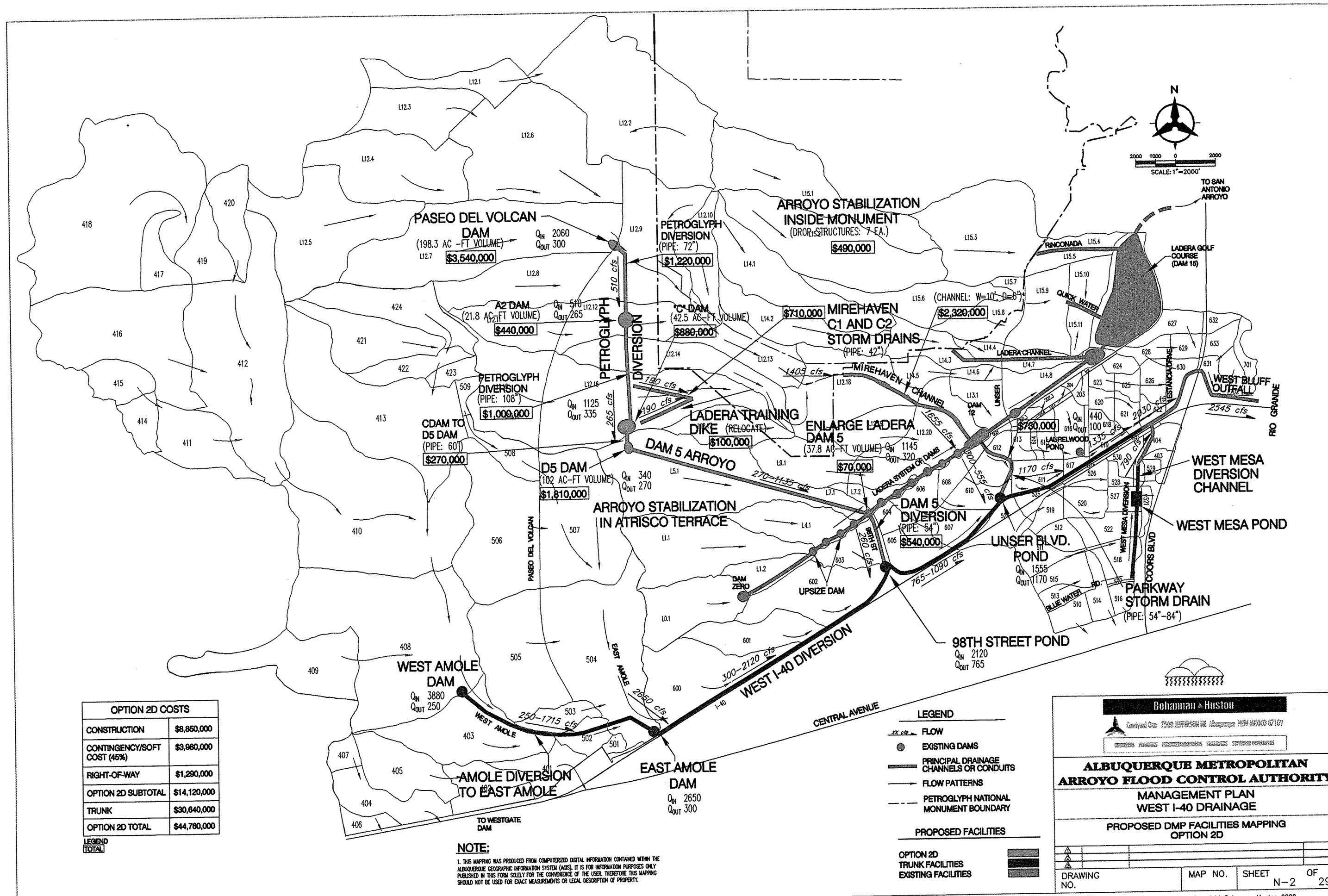
ALBUQUERQUE METROPOLITAN ARROYO FLOOD CONTROL AUTHORITY
 MANAGEMENT PLAN
 WEST I-40 DRAINAGE

PROPOSED DMP FACILITIES MAPPING
 TRUNK FACILITIES

DRAWING NO.	MAP NO.	SHEET N-1	OF 29
-------------	---------	-----------	-------

Copyright Bohannon Huston 2000
 Date:

FIGURE 7



OPTION 2D COSTS	
CONSTRUCTION	\$8,850,000
CONTINGENCY/SOFT COST (45%)	\$3,980,000
RIGHT-OF-WAY	\$1,290,000
OPTION 2D SUBTOTAL	\$14,120,000
TRUNK	\$30,840,000
OPTION 2D TOTAL	\$44,960,000

NOTE:
 1. THIS MAPPING WAS PRODUCED FROM COMPRESSED DIGITAL INFORMATION CONTAINED WITHIN THE ALBUQUERQUE GEOGRAPHIC INFORMATION SYSTEM (AGIS). IT IS FOR INFORMATION PURPOSES ONLY. REVISIONS TO THIS FROM FIELD FOR THE CONVENIENCE OF THE USER. THEREFORE, THIS MAPPING SHOULD NOT BE USED FOR EXACT MEASUREMENTS OR LEGAL DESCRIPTION OF PROPERTY.

- LEGEND**
- FLOW
 - EXISTING DAMS
 - PRINCIPAL DRAINAGE CHANNELS OR CONDUITS
 - FLOW PATTERNS
 - PETROGLYPH NATIONAL MONUMENT BOUNDARY
- PROPOSED FACILITIES**
- OPTION 2D TRUNK FACILITIES
 - EXISTING FACILITIES

Behannon & Huston
 Certified Civil Engineers & Surveyors

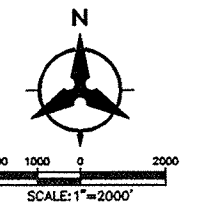
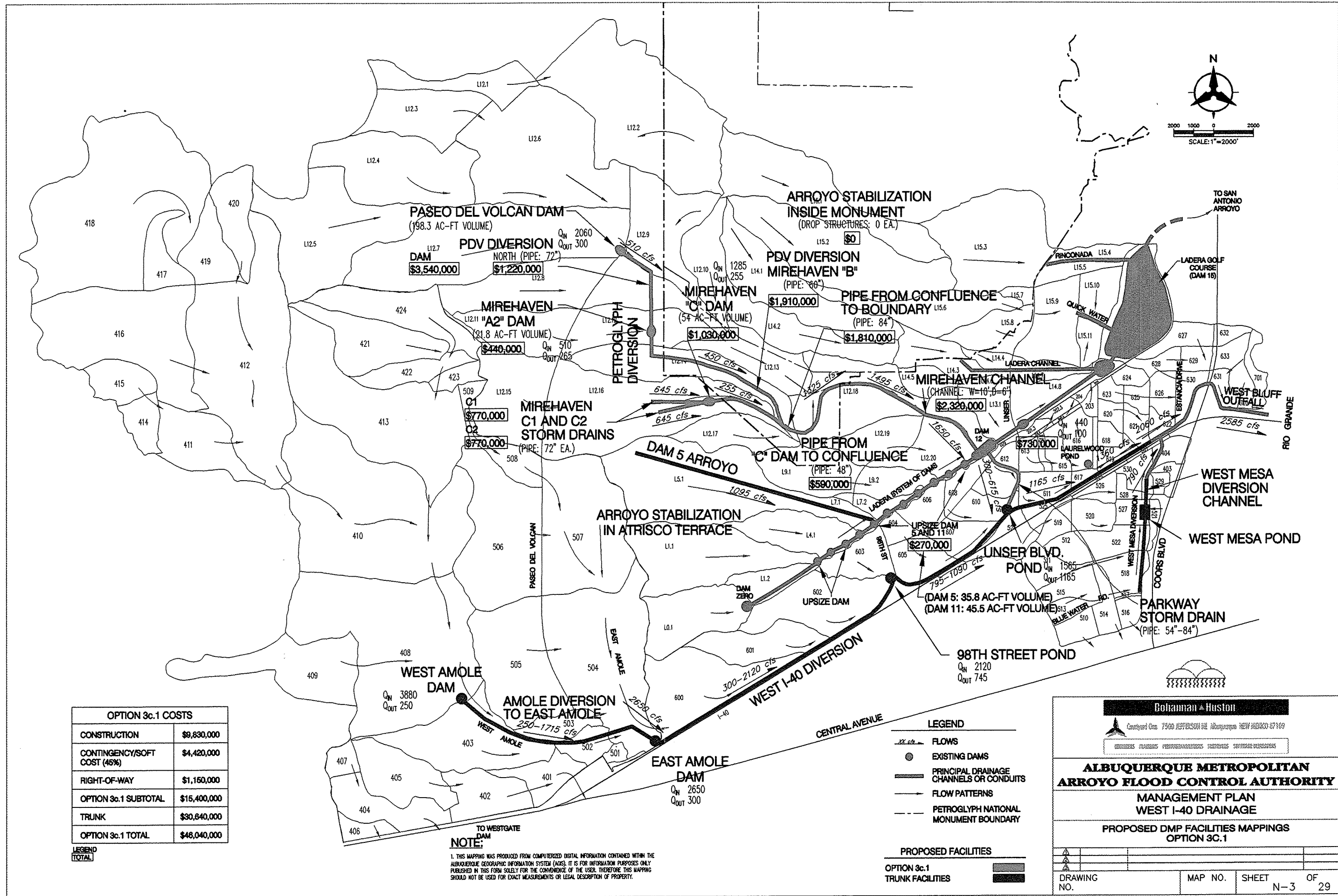
ALBUQUERQUE METROPOLITAN ARROYO FLOOD CONTROL AUTHORITY
 MANAGEMENT PLAN
 WEST I-40 DRAINAGE

PROPOSED DMP FACILITIES MAPPING
 OPTION 2D

DRAWING NO.	MAP NO.	SHEET	OF
		N-2	29

FIGURE 8

Copyright Behannon Huston 2000
 Date:



OPTION 3c.1 COSTS	
CONSTRUCTION	\$9,830,000
CONTINGENCY/SOFT COST (45%)	\$4,420,000
RIGHT-OF-WAY	\$1,150,000
OPTION 3c.1 SUBTOTAL	\$15,400,000
TRUNK	\$30,640,000
OPTION 3c.1 TOTAL	\$46,040,000

NOTE:
 1. THIS MAP WAS PRODUCED FROM COMPUTERIZED DIGITAL INFORMATION CONTAINED WITHIN THE ALBUQUERQUE METROPOLITAN ARROYO FLOOD CONTROL AUTHORITY'S (AMFC) INFORMATION SYSTEM. IT IS FOR INFORMATION PURPOSES ONLY. PUBLISHED IN THIS FORM SOLELY FOR THE CONVENIENCE OF THE USER. NEITHER THIS MAPPING SHOULD NOT BE USED FOR EXACT MEASUREMENTS OR LEGAL DESCRIPTION OF PROPERTY.

- LEGEND**
- FLOWS
 - EXISTING DAMS
 - PRINCIPAL DRAINAGE CHANNELS OR CONDUITS
 - FLOW PATTERNS
 - - - PETROGLYPH NATIONAL MONUMENT BOUNDARY
- PROPOSED FACILITIES**
- OPTION 3c.1
 - TRUNK FACILITIES

Botaman + Huston

Copyright © 2000 BOTAMAN + HUSTON, INC. ALL RIGHTS RESERVED. 11000 W. 11TH AVENUE, SUITE 100, DENVER, CO 80202

ALBUQUERQUE METROPOLITAN ARROYO FLOOD CONTROL AUTHORITY

MANAGEMENT PLAN

WEST I-40 DRAINAGE

PROPOSED DMP FACILITIES MAPPINGS

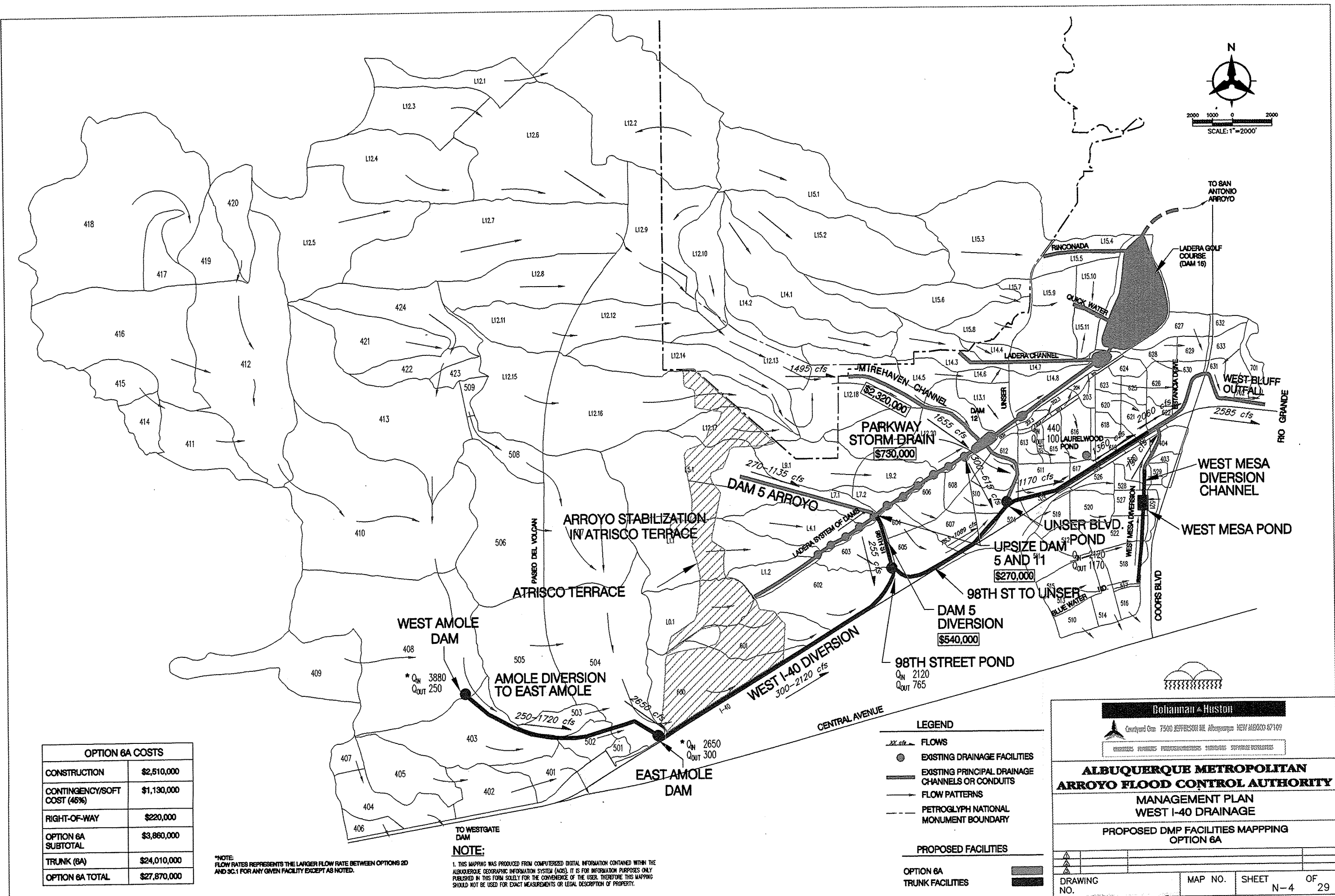
OPTION 3c.1

DRAWING NO.	MAP NO.	SHEET	OF
		N-3	29

95276C 2135

FIGURE 9

Copyright Bohannon Huston 2000
Date:



OPTION 6A COSTS	
CONSTRUCTION	\$2,510,000
CONTINGENCY/SOFT COST (46%)	\$1,130,000
RIGHT-OF-WAY	\$220,000
OPTION 6A SUBTOTAL	\$3,860,000
TRUNK (6A)	\$24,010,000
OPTION 6A TOTAL	\$27,870,000

NOTE:
 1. THIS MAP WAS PRODUCED FROM COMPILED DIGITAL INFORMATION CONTAINED WITHIN THE ALBUQUERQUE METROPOLITAN ARROYO FLOOD CONTROL AUTHORITY'S (AMFCA) GIS. IT IS FOR INFORMATION PURPOSES ONLY AND SHOULD NOT BE USED FOR EXACT MEASUREMENTS OR LEGAL DESCRIPTION OF PROPERTY.

Bohannon + Huston
 CONSULTING ENGINEERS
 2500 UNIVERSITY BLVD. ALBUQUERQUE, NEW MEXICO 87109
 (505) 263-1100

ALBUQUERQUE METROPOLITAN ARROYO FLOOD CONTROL AUTHORITY
 MANAGEMENT PLAN
 WEST I-40 DRAINAGE
 PROPOSED DMP FACILITIES MAPPING
 OPTION 6A

DRAWING NO. _____ MAP NO. _____ SHEET N-4 OF 29

FIGURE 10 Copyright Bohannon Huston 2000