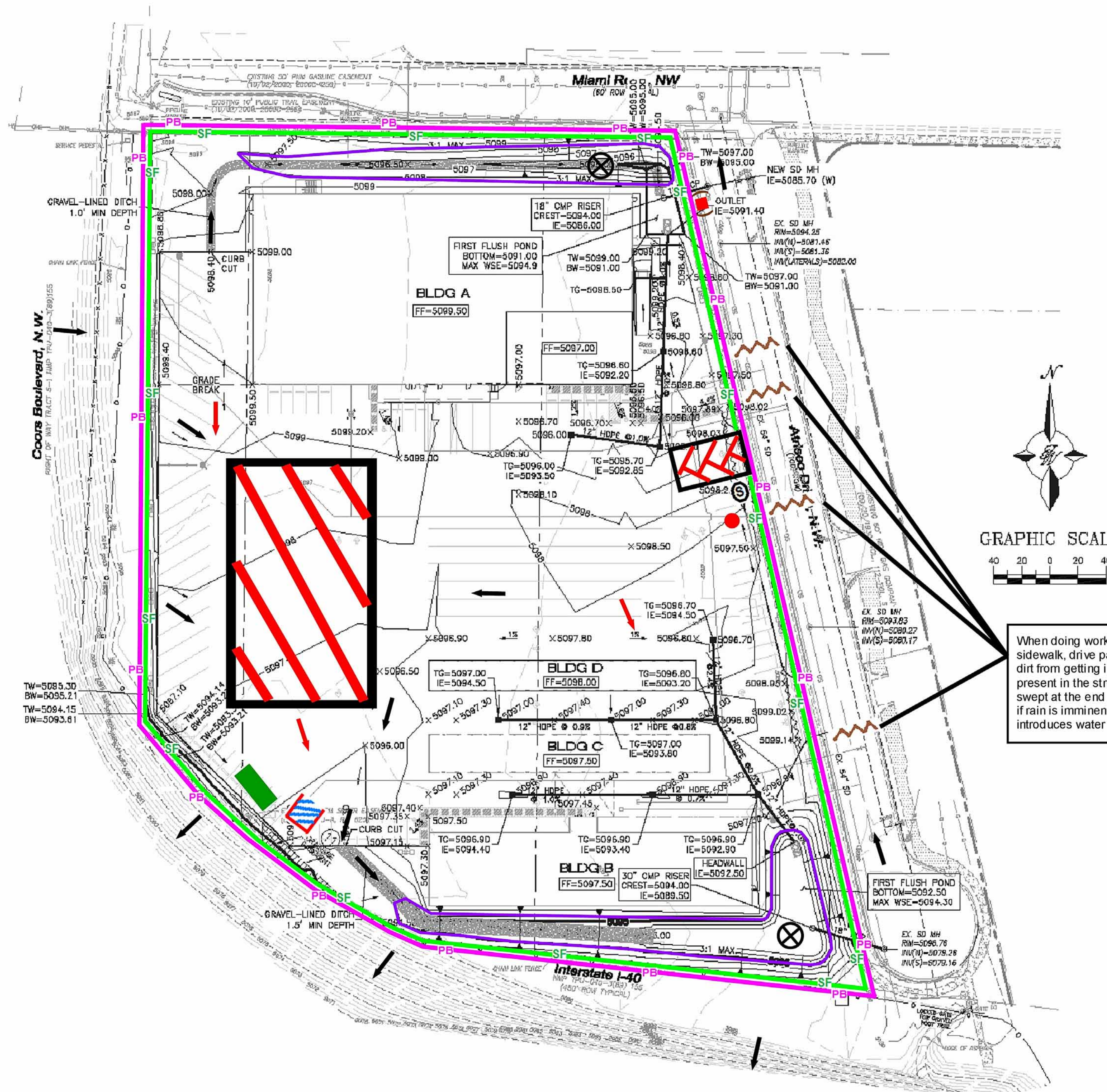
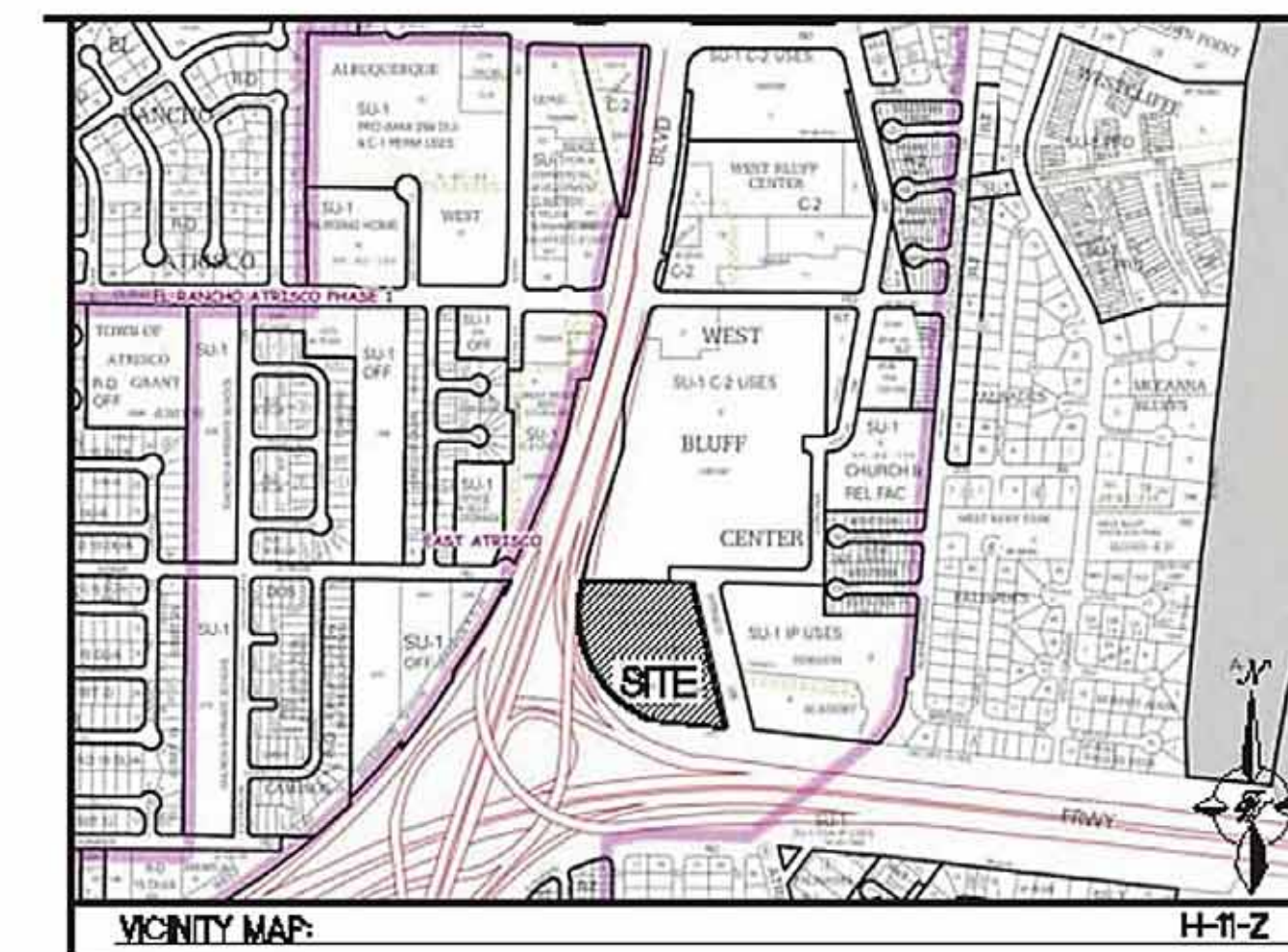
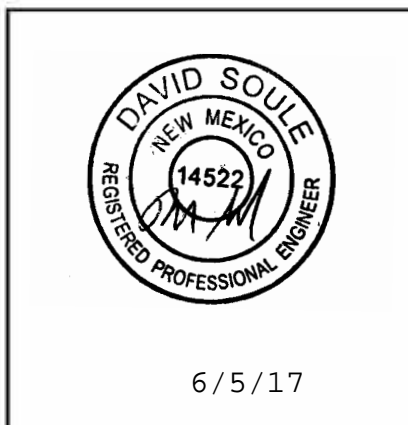




Inspections Plus, Inc.

Engineer Stamp



When doing work in the City ROW (e.g. sidewalk, drive pads, utilities, etc...) prevent dirt from getting into the street. If dirt is present in the street, the street should be swept at the end of each day or during the day if rain is imminent or if the contractor introduces water into the street.

### Legend

#### Erosion Sediment Control Plan

- PB** Project Perimeter & Disturbed Area
- SF** Silt Fence
- Pre Flow**
- Flow**
- Outfall**
- Posting Sign**
- Staging Area**
- Stabilized Construction Entrance**
- Trash Receptacle**
- Chemical Toilet**
- Concrete Washout**
- Retention Pond**
- Proposed Storm Inlet - Install Protection when the inlet becomes operational.**
- Mulch Socks**

### U Haul Center @ Coors & I-40

Receiving Waters and Critical Habitat: Rio Grande is located 0.45 miles to the East.

Impairments: E. coli, Dissolved Oxygen, PCBs in Fish Tissue, Water Temperature

Grade: Before 1% to 2% After 1%