

PROJECT AREA

ALBUQUERQUE FIRE MARSHAL'S  
DIVISION OFFICE PLANS  
CHECKING DIVISION

PERMIT

PERMIT NUMBER: FP 22-009794

APPROVED DATE: 04/21/22

APPROVED

THESE CONSTRUCTION DOCUMENTS WERE REVIEWED AND APPROVED BY THE ALBUQUERQUE FIRE MARSHAL'S OFFICE IN ACCORDANCE WITH THE CITY OF ALBUQUERQUE'S 2015 INTERNATIONAL FIRE CODE, AND NFPA STANDARDS. THIS REVIEW IS VALID FOR 180 DAYS. FINAL INSPECTION IS REQUIRED.

FIRE FLOW: 1,185 SQ. FT. V-B 1500GPM 1 HYDRANT

2015 International Building Code  
2015 Uniform Plumbing Code  
2015 Uniform Mechanical Code  
2017 National Electrical Code  
2018 International Energy Conservation Code

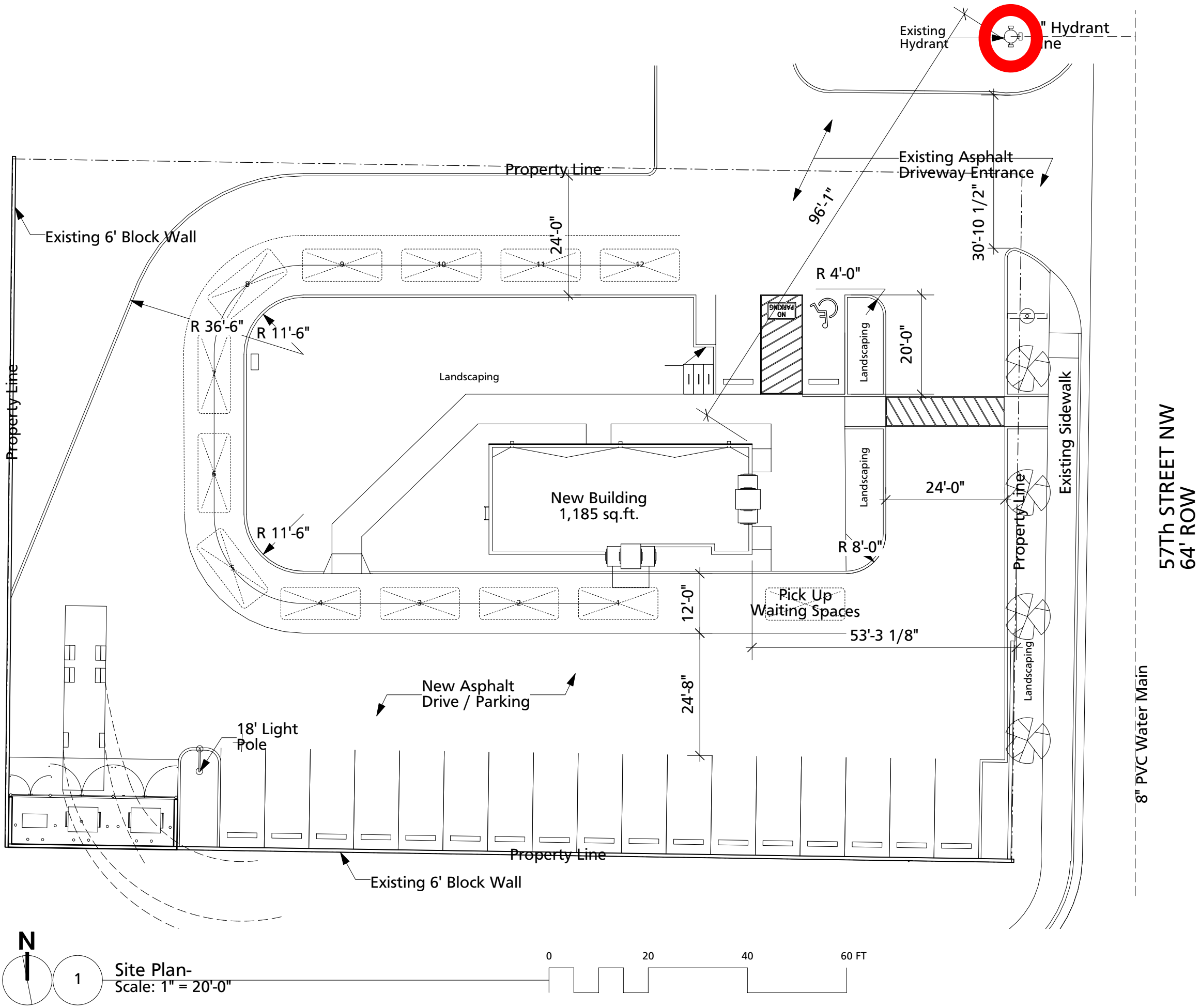
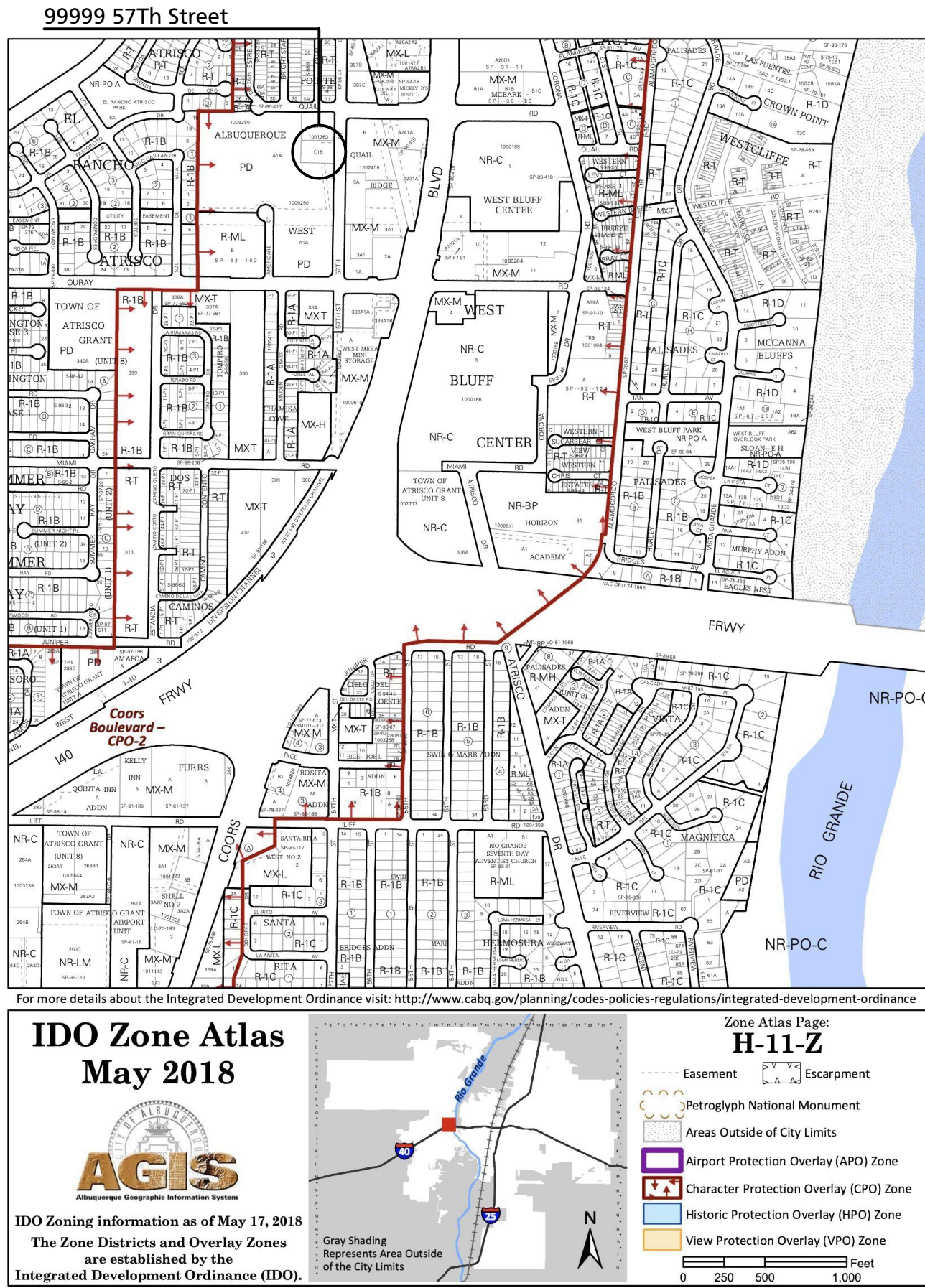
ZONING  
Currently PD (changing to MX- Please review under this zone)

PARKING REQUIREMENTS per 14-16-5-5		
8/1,000 GSF (Restaurant)	1,185	=9
3/1,000 GSF (Patio)	300	=1
Total Spaces required		=10
20% Reduction per IDO 5-5(C)(5)(a) "due to site location in an MT Area of Change"		
Total Spaces required after reduction		= 8
ADA		= 1 (1 Van)
Motorcycle		= 1
Bicycle		= 3
Total Spaces Required		= 8
Total Spaces Provided		= 19

PROJECT AREA Table 503  
RESTURANT (B) = 1,185 Sq.Ft. (NON- Sprinkled)  
ALLOWABLE AREA = B @ 9,000 sq.ft. / 2 Stories per tables 504.4 / 506.2

IBC CHAPTER 9: FIRE PROTECTION  
NO AUTOMATIC SPRINKLER SYSTEM

IBC CHAPTER 10: MEANS OF EGRESS OCCUPANCY LOAD (B) per table 1004.1.2			
AREA	S.F.	OCC. LOAD FACTOR	No. OCCUPANTS
OFFICE SUITE			
Kitchen	917 sf	200 gross	4.5
Breakroom	100 sf	15 net	6.6
Cooler Storage	96 sf	300 gross	1
Restrooms / Office	72 sf	100 gross	1
Total Interior	1,185 sf		13
Total Exterior	220	15 net	15

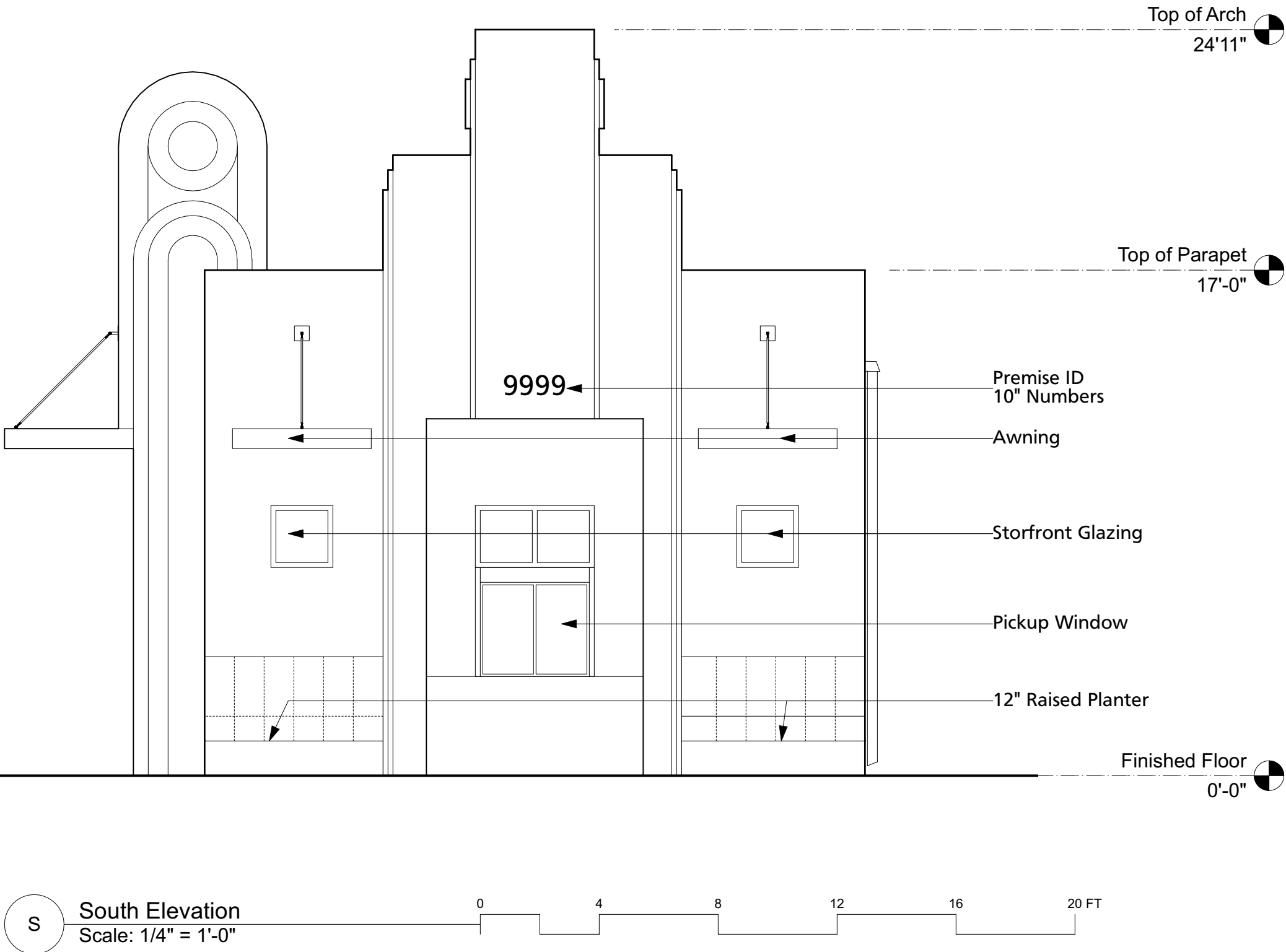


**Sprinkler System:**  
1) Shop drawings will be submitted to the fire marshal's office for review and approval of any installation or modification to fire sprinkler system, fire alarm system, kitchen suppression system, or any other fire related system.  
2) The fire sprinkler system will be supervised when required by the 2015 International fire code.

Parking and drive aisle for fire apparatus access roads shall have an asphalt, concrete, or other approved driving surface capable of supporting the imposed load of fire apparatus weighing at least 75,000 pounds. Contractor to provide engineer data for approval.

**Fire Flow Requirements**  
Building  
Construction Type Vb Occupancy A-2  
Square Footage = 1,185 sq.ft. Fire Flow = 1,500 GPM - 2 Hr.  
1 Hydrants required 500'  
Building Single Story  
Kox Box - Not required  
PIV - Not required  
FDC - Not required

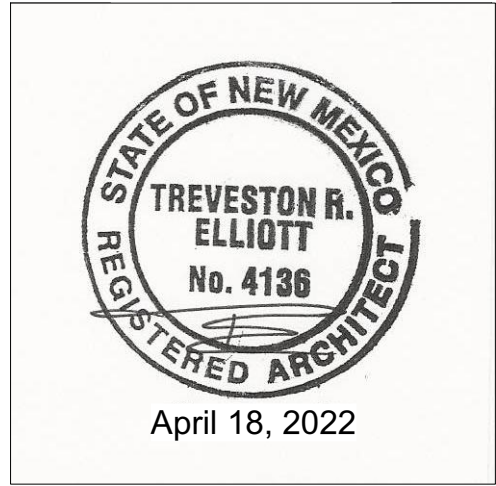
**SECTION 906: PORTABLE FIRE EXTINGUISHERS**  
Provide (1)2-A extinguisher all areas:  
1 Extinguisher required per 3,000 sq.ft.  
max travel distance = 75 feet



TREVESTON ELLIOTT  
ARCHITECT  
811 12TH ST. NW  
ALBUQUERQUE, NEW MEXICO  
87102  
C 505.259.4617  
treveston@earthlink.net  
www.earthlink.net

STRIPES BURRITO CO.

Bernalillo, New Mexico 87120



Date: April 18, 2022

Sheet: FIRE-1

FIRE-1