

PROJECT SUMMARY

New 1,185 sq.ft. Drive Thru Restaurant

PROJECT INFORMATION

PROJECT ADDRESS

99999 57th Street NW
Albuquerque, New Mexico 87120

APPLICABLE CODES

2015 International Building Code
2015 Uniform Plumbing Code
2015 Uniform Mechanical Code
2017 National Electrical Code
2018 International Energy Conservation Code

ZONING

MX-M

KEYED NOTES

1. CONCRETE DRIVEPAD PER CITY OF ALBUQUERQUE STANDARD SPECIFICATION. REFER TO CITY STANDARD DETAIL 2425 SEE DETIAL TCL SHEET
2. CONCRETE CURB AND GUTTER PER CITY OF ALBUQUERQUE STANDARD SPECIFICATION. REFER TO CITY STANDARD DETAIL 2415A SEE DETIAL TCL SHEET
3. CONCRETE SIDEWALK PER CITY OF ALBUQUERQUE STANDARD SPECIFICATION. REFER TO CITY STANDARD DETAIL 2430 SEE DETIAL TCL SHEET
4. 6' X 5.75" X 4" H WHEEL STOP. PROVIDE (2) 18" LONG #4 REBAR STAKES AT EA. STOP WITH IN PARKING SPACES AS INDICATED SEE DETIAL TCL SHEET
5. ADA ACCESSIBLE PARKING SIGN SEE DETIAL TCL SHEET
6. MOTORCYCLE PARKING SIGN SEE DETIAL TCL SHEET
7. BICYCLE RACK SEE DETIAL TCL SHEET
8. PARKING AND DRIVE AISLE FOR FIRE APPARATUS ACCESS ROADS SHALL HAVE AN ASPHALT, CONCRETE, OR OTHER APPROVED DRIVING SURFACE CAPABLE OF SUPPORTING THE IMPOSED LOAD OF APPARATUS WEIGHING AT LEAST 75,000 POUNDS. CONTRACTOR TO PROVIDE ENGINEER DATA FOR APPROVAL.
9. PARKING STRIPING 2" WIDE X 2' O.C. DIAGONAL PAINT STRIPPING. SEE INDICATED LAYOUT WITH 3" X 3" HANDICAP SYMBOL AND WORDS "NO PARKING" IN CAPITAL LETTERS 1" HIGH 2" STROKE AS CLOSE TO WHERE ADJACENT VEHICLES REAR TIRE WOULD BE PARKED
10. ALL WHEELCHAIR RAMPS LOCATED WITHIN THE PUBLIC RIGHT OF WAY MUST HAVE TRUNCATED DOMES.
11. ALL IMPROVEMENTS LOCATED IN THE RIGHT OF WAY MUST INCLUDE A WORK ORDER
12. ALL BROKEN OR CRACKED SIDEWALK MUST BE REPLACED WITH SIDEWALK AND CURB AND GUTTER

LEGEND

- PROPERTY LINE
- NEW CONCRETE
- LANDSCAPE AREA

TREVESTON ELLIOTT
ARCHITECT

811 12TH ST. NW
ALBUQUERQUE, NEW MEXICO
87102
C 505.259.4617
treveston@earthlink.com
www.earthlink.com

STRIPES BURRITO CO.

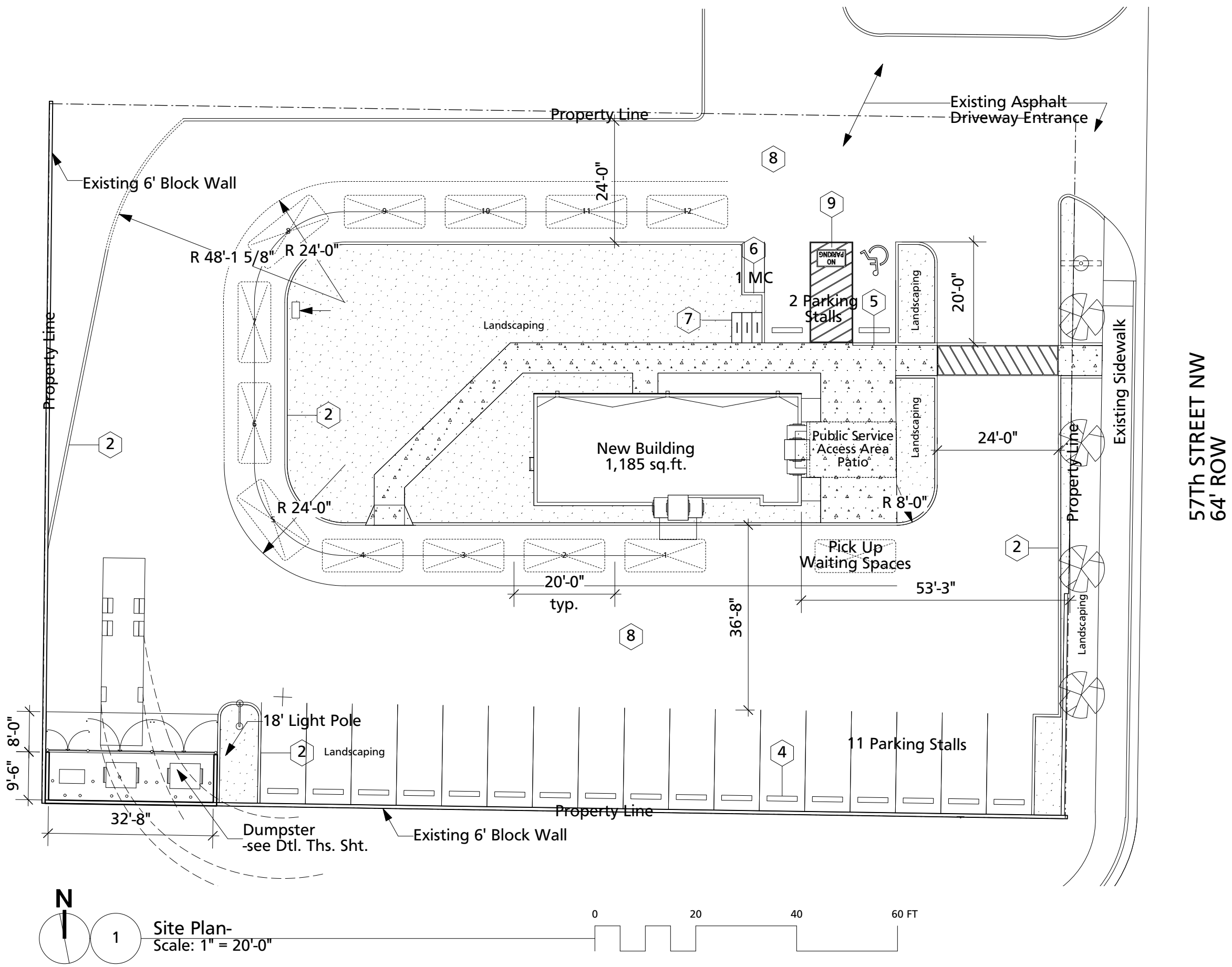
Bernalillo, New Mexico 87120



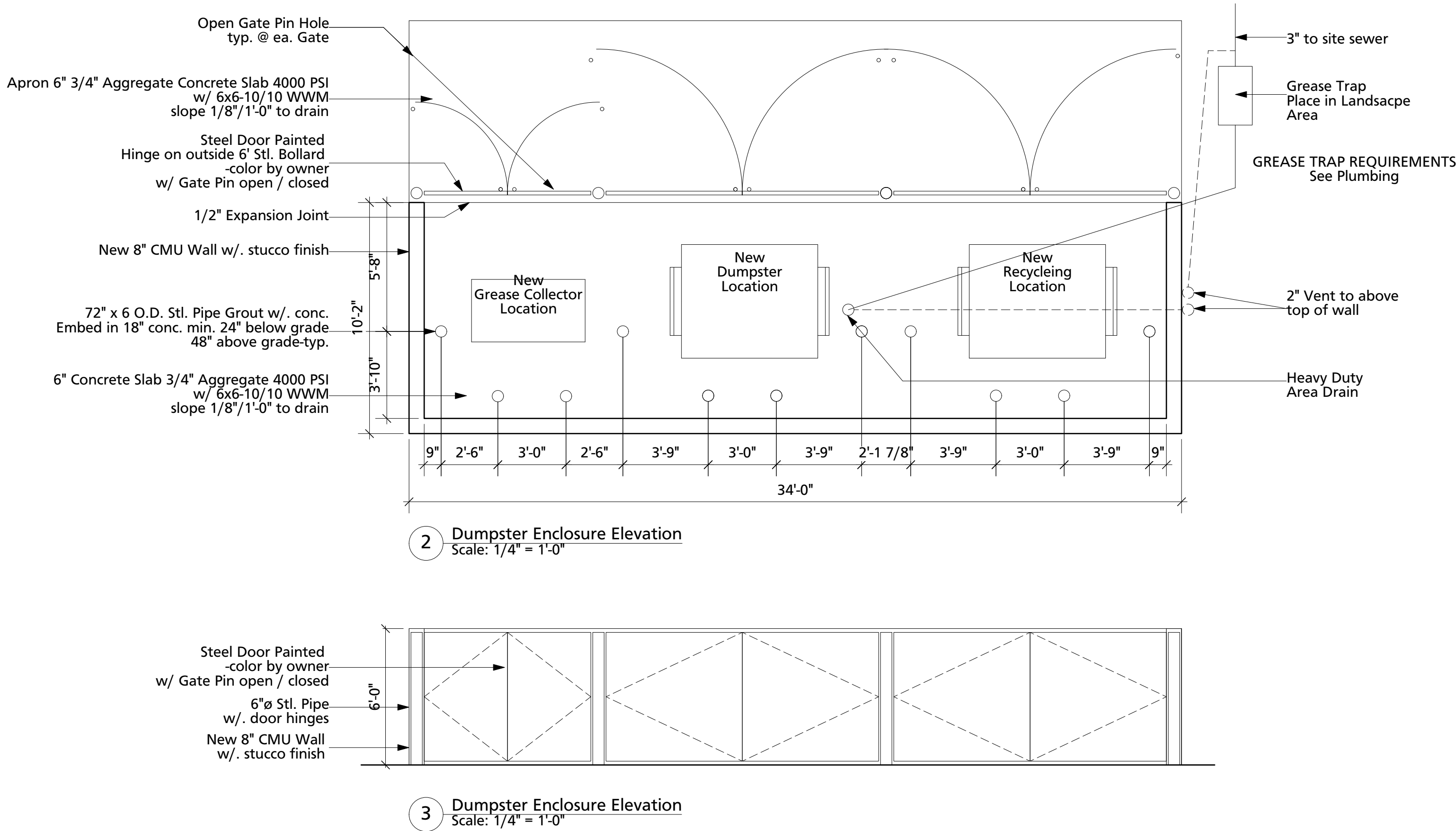
Date: April 18, 2022

Sheet: Solid Waste

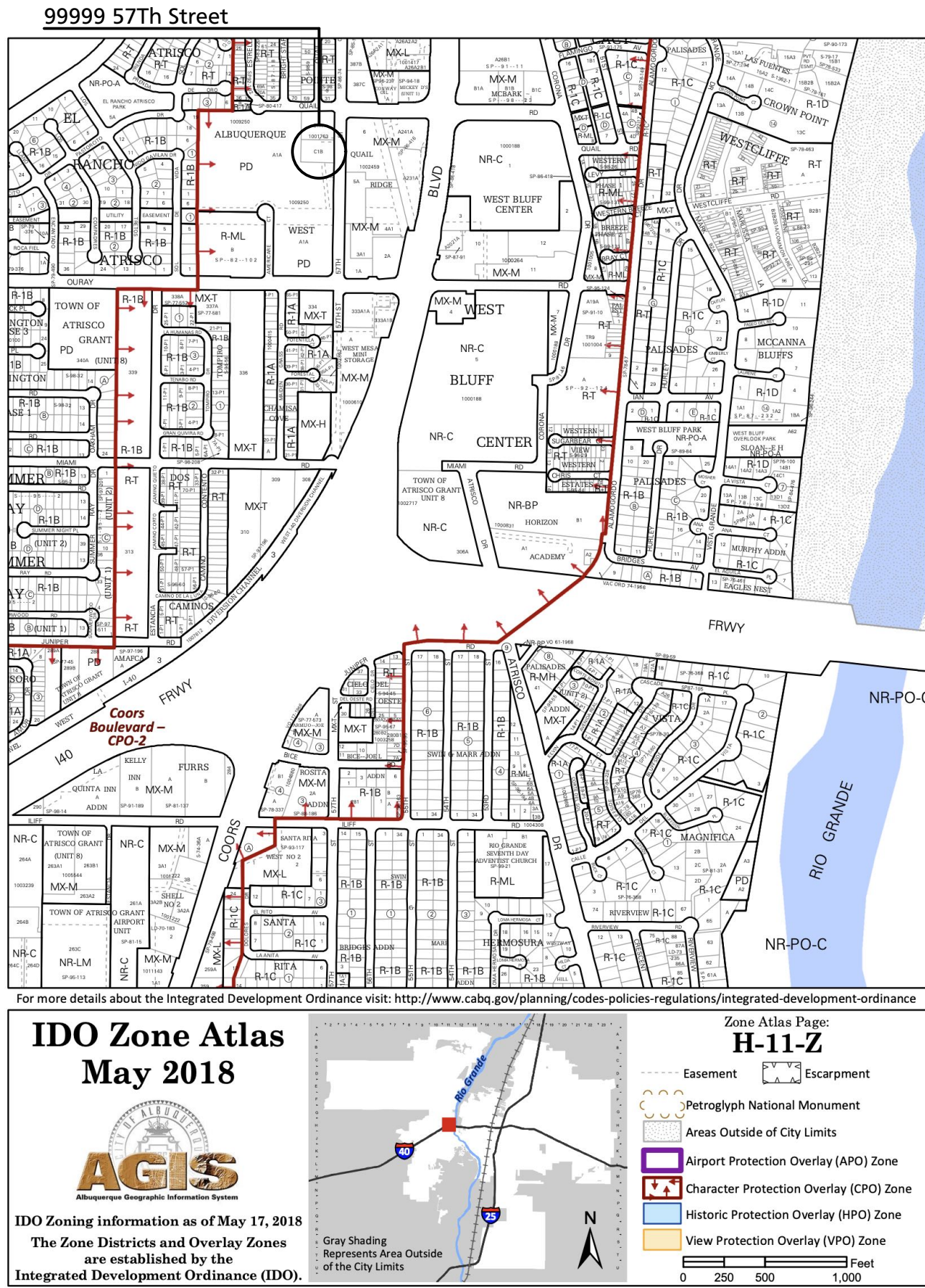
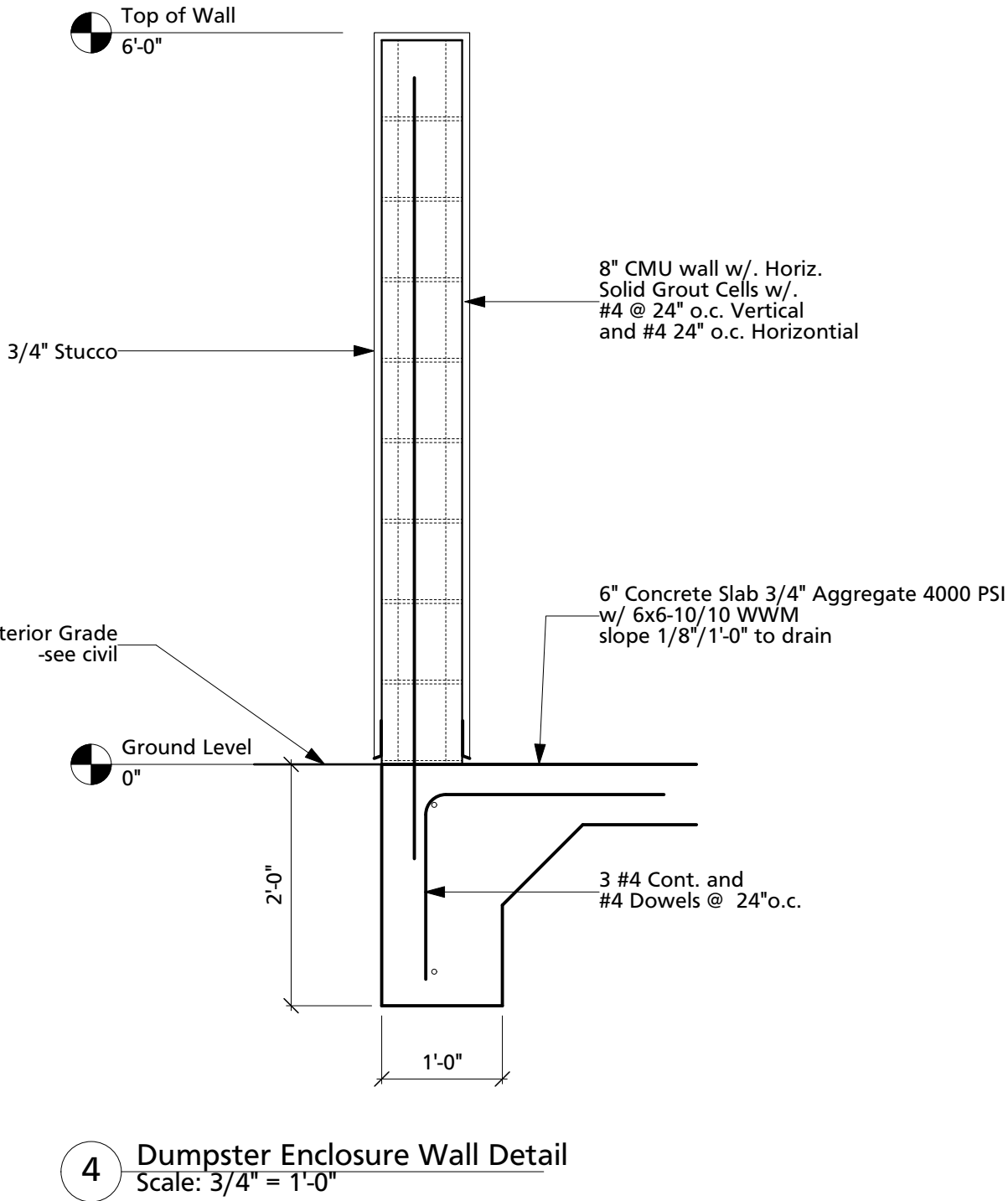
SW



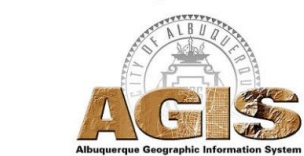
Approved for access by the
Solid Waste Department for a double trash enclosure
Herman Gallegos 04-21-22 *Herman Gallegos*



General Note:
PRE POUR INSPECTION REQUIRED BY COA SOLID WASTE DEPARTMENT.



IDO Zone Atlas
May 2018



IDO Zoning information as of May 17, 2018
The Zone Districts and Overlay Zones
are established by the
Integrated Development Ordinance (IDO).

