

Wolfenbarger, Jeanne

From: Wolfenbarger, Jeanne
Sent: Thursday, February 26, 2015 4:38 PM
To: 'aecllc@aol.com'
Subject: H13-D021 (Starbucks and Burger King)
Attachments: Scanned from a Xerox multifunction device.pdf; Scanned from a Xerox multifunction device (32).pdf

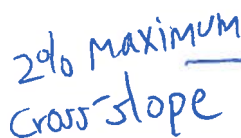
Shawn, as discussed earlier, go ahead and revise the TCL to add a ramp on each end of the pedestrian way from the handicapped spot in the middle of the parking lot (as shown per first attachment).

As per the second attachment, make sure that the curb ramp shows a maximum 2% cross-slope on the ramp.

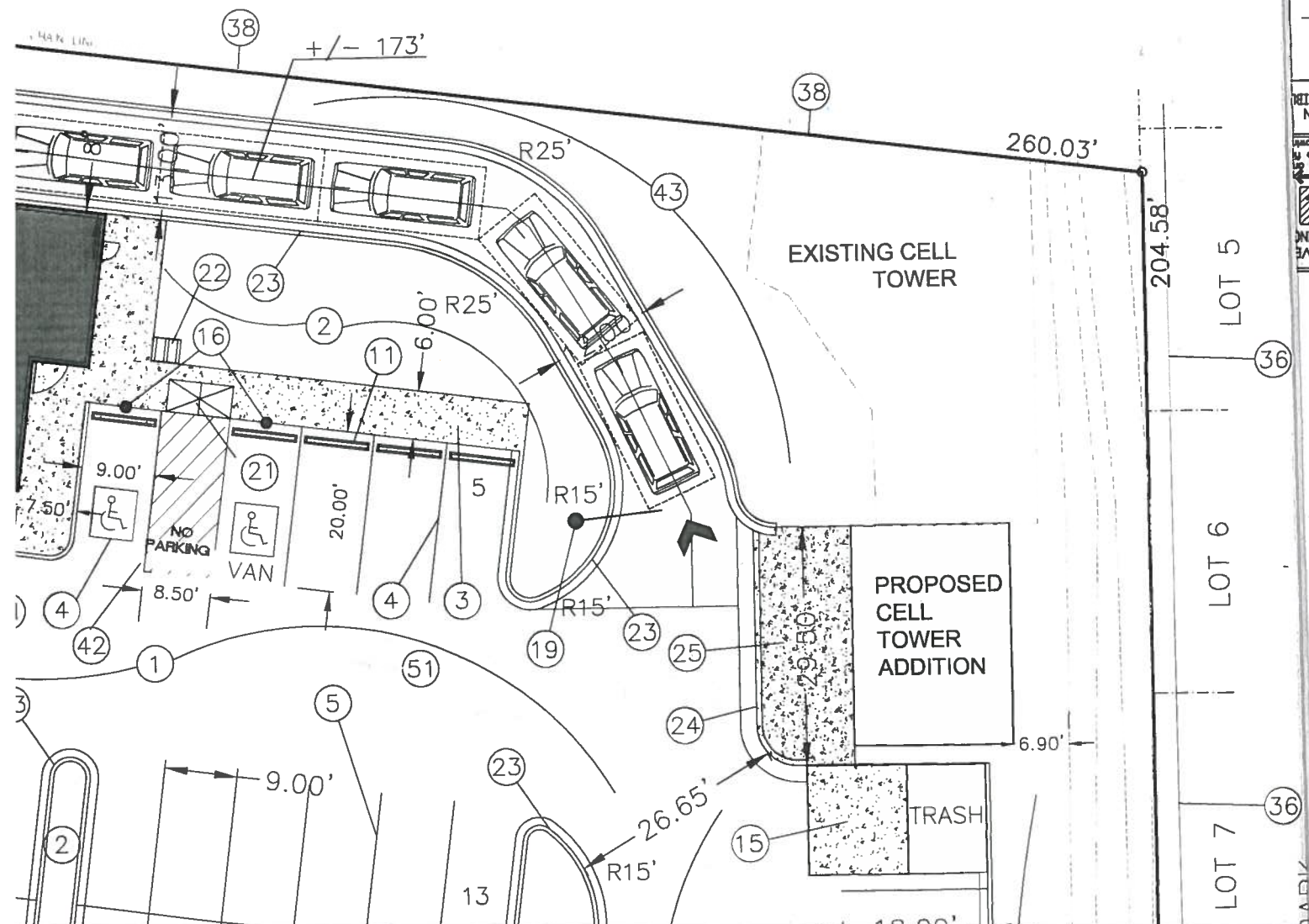
Return 2 copies of the new TCL and also send an electronic copy. Then, I can approve this.

If you want, you can bring in 4 copies, and I can stamp all 4 copies for you to include the copies for your building permit set.

Jeanne



38 - A, M. R. G. C. D. M A P 35



HEREFORE, SIGNS, WALLS, TREES, AND SHRUBBERY
FEET TALL (AS MEASURED FROM THE GUTTER PAN) WILL
BE IN THIS AREA." PLEASE SEE SIGHT DISTANCE EXHIBIT
SECTIONS FOR CLARIFICATION (THE DEVELOPMENT
CHAPTER 23, PART B, SECTION 5. A.

GRANDE BOULEVARD, N. W.
(PUBLIC RIGHT-OF-WAY VARIES)

