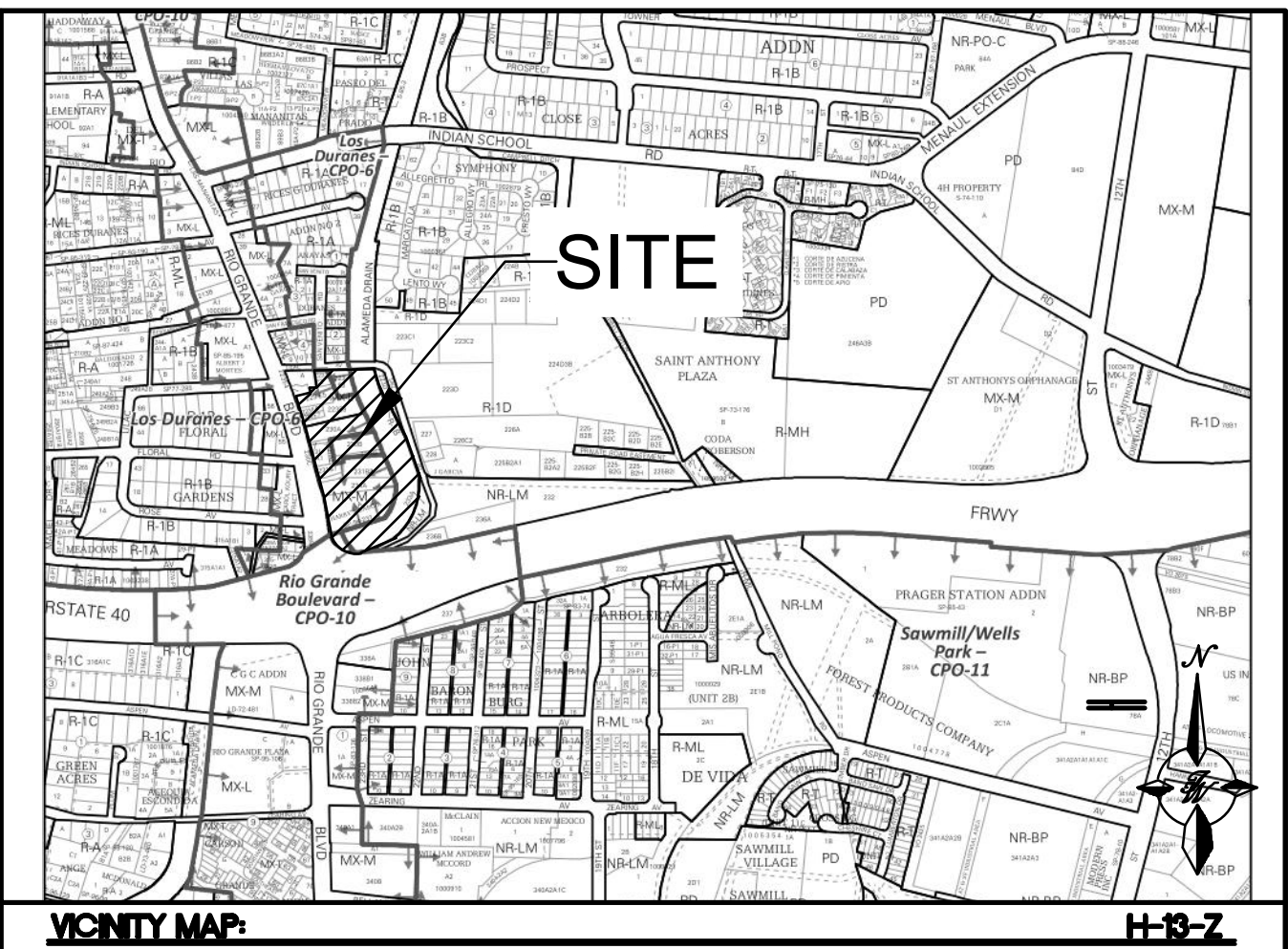
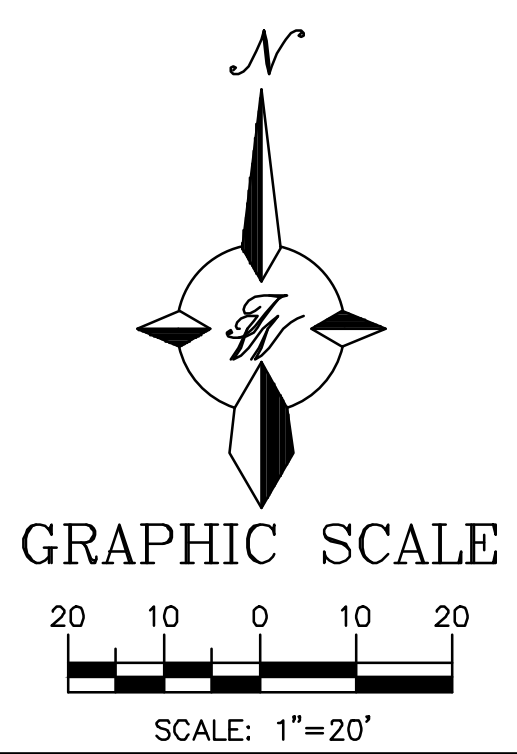


- KEYED NOTES**
- 1 EXISTING WATER METER BOX
 - 2 NEW FIRE HYDRANT (COA STD DWG #2340)
 - 3 FUTURE FIRE HYDRANT
 - 4 EXISTING FIRE HYDRANT
 - 5 6" MEDIAN C & G (COA STD DWG #2415A)
 - 6 ADA PARKING (SEE DETAIL, SHEET C3)
 - 7 CONCRETE PAVEMENT (SEE DETAIL, SHEET C3)
 - 8 CORNER ACCES RAMP (COA STD DWG #2441)
 - 9 PAIRED CURB RAMP (COA STD DWG #2442)
 - 10 PARALLEL/DIAGONAL RAMP (COA STD DWG #2443)
 - 11 NEW DETECTABLE WARNING SURFACE (COA STD DWG #2446)
 - 12 MEDIAN ISLAND ACCESS RAMP (COA STD DWG #2448)
 - 13 LANDSCAPE AREA
 - 14 SIGNAL POLE (COA STD DWG #2561)
 - 15 CROSS WALK (COA STD DWG #2600-106)
 - 16 STD 6" CURB AND GUTTER (COA STD DWG #2415A)
 - 17 PRIVATE 6" CURB AND GUTTER (SEE DETAIL, SHEET C3)
 - 18 NO CURB
 - 19 BIKE RACK (SEE DETAIL, SHEET C3)
 - 20 SHARED DUMPSTER (SEE DETAIL, SHEET C3)
 - 21 ADA NO PARKING SIGN (SEE DETAIL, SHEET C3)
 - 22 MOTORCYCLE PARKING SIGN (SEE DETAIL, SHEET C3)
 - 23 DO NOT ENTER (COA STD DWG #2600-603)
 - 24 STOP SIGN (COA STD DWG #2600-601)
 - 26 NEW ASPHALT PAVEMENT (SEE DETAIL, SHEET C3)
 - 27 TEMPORARY ASPHALT 6" C & G (COA STD DWG #2415C)
 - 28 WHEEL STOP (SEE DETAIL, SHEET C3)
 - 29 PUBLIC ADA ACCESSIBLE PATHWAY
 - 30 PRIVATE ADA ACCESSIBLE PATHWAY



PROJECT SUMMARY

THE PROPOSED PROJECT IS A BANK WITH DRIVE UP FACILITIES. THE NAME OF THE BUSINESS IS SANDIA LABORATORY FEDERAL CREDIT UNION (SLFCU). THE BUILDING FOOT PRINT IS APPROXIMATELY 4,400 SF. THE EXISTING ZONING IS MX-M.

SITE DATA

SANDIA LABORATORY FEDERAL CREDIT UNION (SLFCU)

IDO ZONING: MX-M

PROPOSED USAGE: BUSINESS

LOT AREA: 40,530 SF (0.93 ACRE)

BUILDING AREA: 4,400 SF

PARKING: SPACES REQUIRED: 13 (3 SPACES/ 1,000 SF)

PARKING: SPACES PROVIDED: 32 (INCLUDES HC PARKING)

HC PARKING: SPACES REQUIRED: 2

HC PARKING: SPACES PROVIDED: 2 (1 VAN ACCESSIBLE)

MC PARKING: SPACES REQUIRED: 1 (1 PER 1-25 REQUIRED PARKING SPACES)

MC PARKING: SPACES PROVIDED: 2

BICYCLE PARKING: SPACES REQUIRED: 3 (3 SPACES OR 10% OF REQUIRED PARKING)

BICYCLE PARKING: SPACES PROVIDED: 4

LANDSCAPE AREA PROVIDED: 7400 SF (18%)

- NOTES**
1. LANDSCAPING AND SIGNAGE WILL NOT INTERFERE WITH CLEAR SIGHT REQUIREMENTS. THEREFORE, SIGNS, WALLS, TREES AND SHRUBBERY BETWEEN 3 AND 8 FEET TALL (AS MEASURED FROM THE GUTTER PAN) WILL NOT BE ACCEPTABLE IN THE CLEAR SIGHT TRIANGLE
 2. ALL CONFLICTING STRIPING SHALL BE ERADICATED BY WATER BLASTING PER SECTION 443 OF THE COA STANDARD SPECIFICATIONS (LATEST EDITION)
 3. ALL SIGNS TO BE COVERED WITH ANTI GRAFFITI COATING.
 4. ALL SIGNS AND STRIPING SHALL BE MADE IN ACCORDANCE WITH THE MUTCD (CURRENT EDITION) SPECIFICATIONS AND COA STANDARDS.
 5. ALL SYMBOLS AND ARROWS STRIPING TO BE PREFORMED HOT APPLIED THERMOPLASTIC TAPE.
 6. ALL LANE OR LANES STRIPING TO BE PREFORMED HOT APPLIED THERMOPLASTIC TAPE.
 7. PAINT ALL MEDIAN CURB AND MEDIAN NOSE YELLOW (TYP)PER COA STANDARD SPECIFICATIONS.
 8. ALL IMPROVEMENTS LOCATED IN THE RIGHT OF WAY MUST BE INCLUDED ON THE WORK ORDER
 9. ALL BROKEN OR CRACKED SIDEWALK MUST BE REPLACED WITH SIDEWALK AND CURB AND GUTTER PER COA STANDARDS

Approved for Access Solid Waste Department
11-06-20 Herman Gallegos *Herman Gallegos*

**PRELIMINARY
NOT FOR CONSTRUCTION**

ENGINEER'S SEAL RONALD R. BOHANNAN P.E. #7868	SANDIA LAB FCU RIO GRANDE + 1-40	DRAWN BY RG
	TRAFFIC CIRCULATION LAYOUT	DATE 10-8-2020
	TERRA WEST, LLC 5571 MIDWAY PARK PL NE ALBUQUERQUE, NEW MEXICO 87109 (505) 858-3100 www.tierrawestllc.com	DRAWING 2012100-SP
		SHEET # C1
		JOB # 2012100