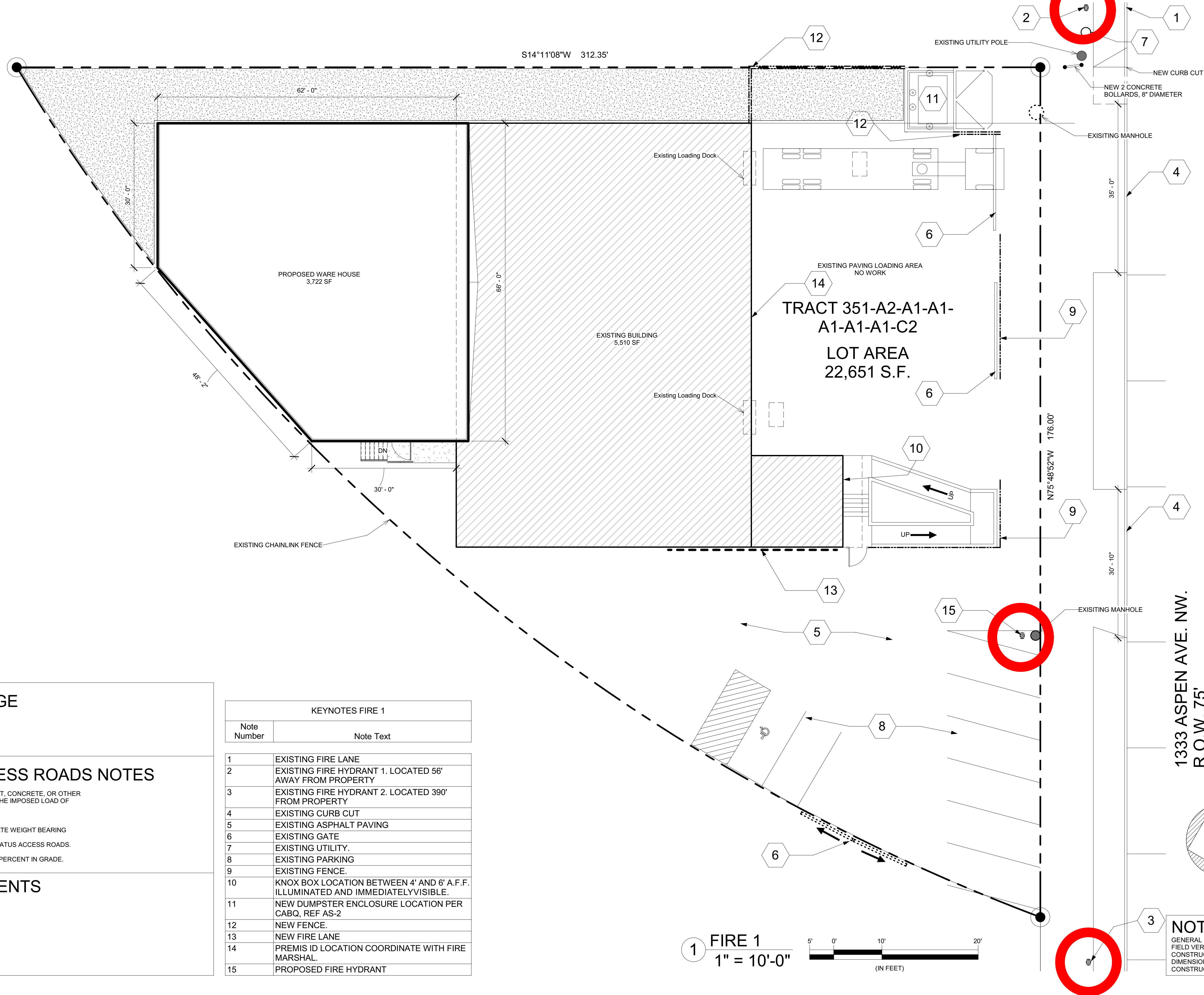




ALBUQUERQUE FIRE MARSHAL'S
DIVISION OFFICE PLANS
CHECKING DIVISION
PERMIT
PERMIT NUMBER: FP-24-018812
APPROVED DATE: 04/17/24
APPROVED

THESE CONSTRUCTION DOCUMENTS WERE REVIEWED AND APPROVED BY THE ALBUQUERQUE FIRE MARSHAL'S OFFICE IN ACCORDANCE WITH THE CITY ORDINANCE, THE INTERNATIONAL FIRE CODE, AND THE REQUIREMENTS. THIS PERMIT IS VALID FOR 180 DAYS. FINAL INSPECTION REQUIRED.
FIRE FLOW: 2500 GPM, VB, 3 HYDRANTS



AREA SQUARE FOOTAGE

EXISTING = 5,510 S.F.
NEW ADDITION = 3,722 S.F.
TOTAL = 9,232 S.F.

FIRE APPARATUS ACCESS ROADS NOTES

- FIRE APPARATUS ACCESS ROADS SHALL HAVE AN ASPHALT, CONCRETE, OR OTHER APPROVED DRIVING SURFACE CAPABLE OF SUPPORTING THE IMPOSED LOAD OF FIRE APPARATUS WEIGHING AT LEAST 75,000 POUNDS.

- ENGINEERING DATA SHALL BE SUBMITTED TO SUBSTANTIATE WEIGHT BEARING CAPACITY AND ALL WEATHER DRIVING CAPABILITIES FOR FIRE APPARATUS ACCESS ROADS.

- FIRE APPARATUS ACCESS ROADS SHALL NOT EXCEED 10 PERCENT IN GRADE.

FIRE FLOW REQUIREMENTS

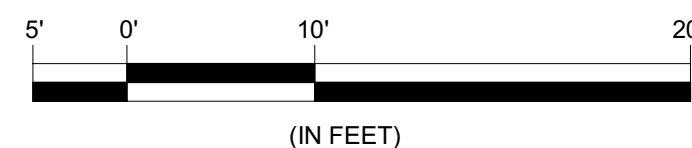
TYPE VB | GROUP S-2 | 9,232 S.F. (1 STORY)

TABLE B105.1
7,701 - 9,400 S.F. = 2,500 G.P.M. = 2 HOUR FLOW DURATIONS

TABLE C102.1
2,500 G.P.M. | 3 HYDRANT | 450 FEET SPACING
225 FEET MAX DISTANCE FROM ROAD TO HYDRANT
2 EXISTING HYDRANTS, 1 PROPOSED HYDRANT

KEYNOTES FIRE 1	
Note Number	Note Text
1	EXISTING FIRE LANE
2	EXISTING FIRE HYDRANT 1. LOCATED 56' AWAY FROM PROPERTY
3	EXISTING FIRE HYDRANT 2. LOCATED 390' FROM PROPERTY
4	EXISTING CURB CUT
5	EXISTING ASPHALT PAVING
6	EXISTING GATE
7	EXISTING UTILITY.
8	EXISTING PARKING
9	EXISTING FENCE.
10	KNOX BOX LOCATION BETWEEN 4' AND 6' A.F.F. ILLUMINATED AND IMMEDIATELY VISIBLE.
11	NEW DUMPSTER ENCLOSURE LOCATION PER CABQ, REF AS-2
12	NEW FENCE.
13	NEW FIRE LANE
14	PREMIS ID LOCATION COORDINATE WITH FIRE MARSHAL.
15	PROPOSED FIRE HYDRANT

1 FIRE 1
1" = 10'-0"

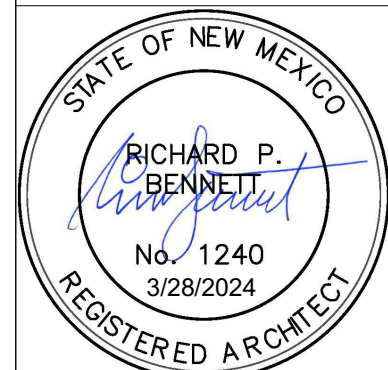


NOTE

GENERAL CONTRACTOR TO FIELD VERIFY ALL EXIST. CONSTRUCTION AND DIMENSIONS PRIOR TO CONSTRUCTION

G & S MEATS FREEZER
FIRE 1 PLAN
1333 ASPEN AVE NW
ALBUQUERQUE, NM 87104
PROJECT #2345

REVISION DATE



RBA ARCHITECTURE, PC
1104 PARK AVE. NW
ALBUQUERQUE, NM 87102
WWW.RBA1.COM



DATE
2-12-2024

SHEET NUMBER
F-1