

CITY OF ALBUQUERQUE



**Planning Department
Transportation Development Services**

November 14, 2014

David Soule, P.E.
Rio Grande Engineering
PO Box 93924
Albuquerque, NM 87199

**Re: Noon Day Church, 2400 2nd St.
Certificate of Occupancy – Transportation Development**
Engineer's Stamp dated 11-14-13 (H14-D067)
Certification dated 11-12-14

Dear Mr. Soule,

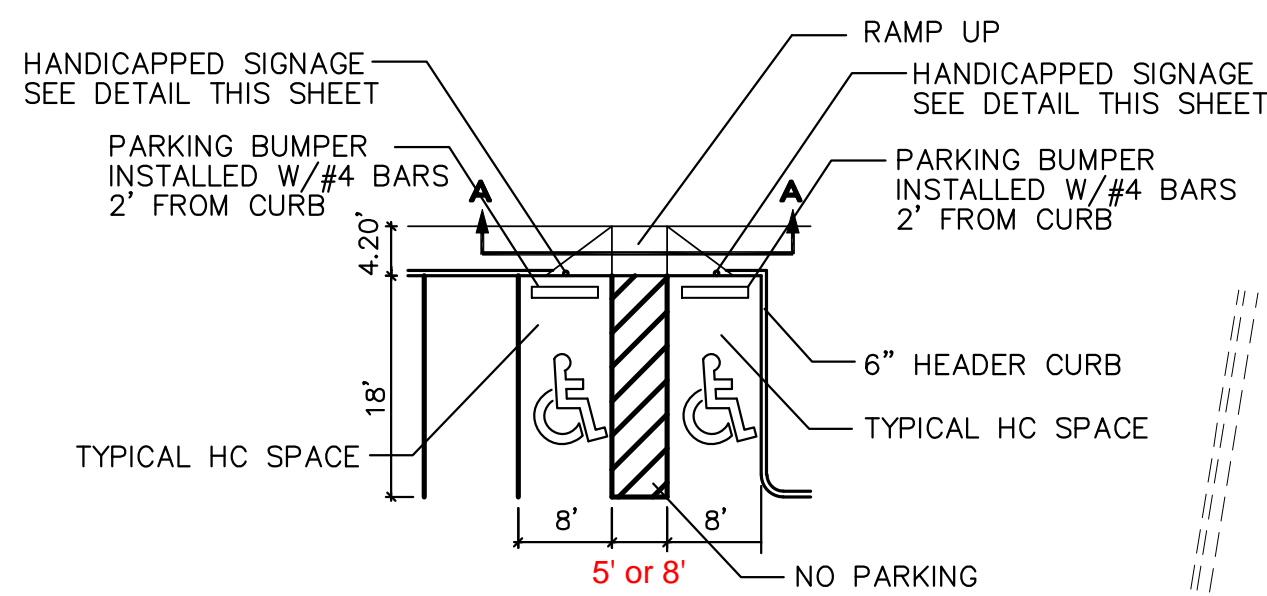
Based upon the information provided in your submittal received 11-12-14, Transportation Development has no objection to the issuance of a Permanent Certificate of Occupancy. This letter serves as a "green tag" from Transportation Development for a Permanent Certificate of Occupancy to be issued by the Building and Safety Division.

If you have any questions, please contact me at (505)924-3630.

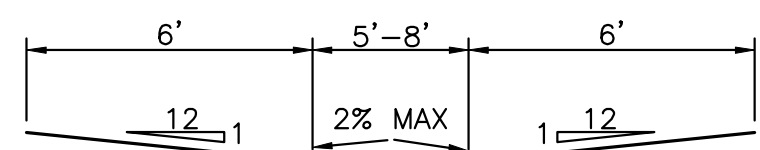
Sincerely,

Racquel M. Michel, P.E.
Senior Engineer, Planning Dept.
Development Review Services

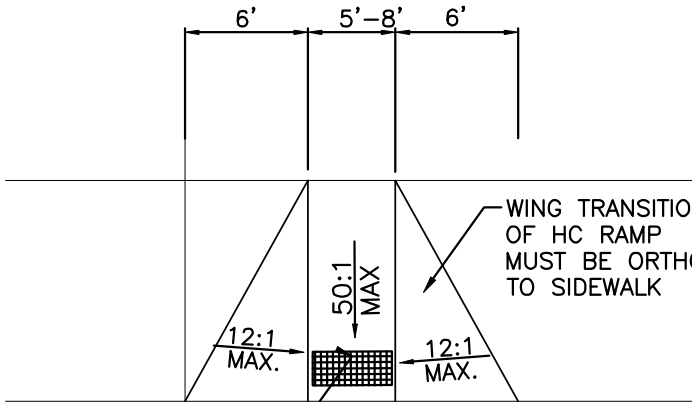
c: File
CO Clerk



HC PARKING DETAIL
NTS



SECTION A-A
NTS



SPECIFICATIONS SHALL BE PER ADA GUIDELINES
CONTRACTOR SHALL SUBMIT SPECIFICATIONS
TO CONSULTING ENGINEER FOR
EVALUATION PRIOR TO CONSTRUCTION

WHEELCHAIR RAMP DETAIL (TYP.)
NTS

1'-6"x1'x18 GA. REFLECTIVE
PORCELAIN ENAMEL STANDARD
"HANDICAP PARKING" SIGN WITH
IDENTIFICATION SYMBOL BOLT
TO STEEL TUBE WITH 3/8"
CADIUM PLATED BOLTS, NUTS,
& WASHERS.

8"x1'x18 GA. REFLECTIVE
PORCELAIN ENAMEL SIGNAGE
STATING "VAN ACCESSIBLE"
AT VAN SPACES ONLY

2" DIA.x.188 GALV.
STEEL PIPE

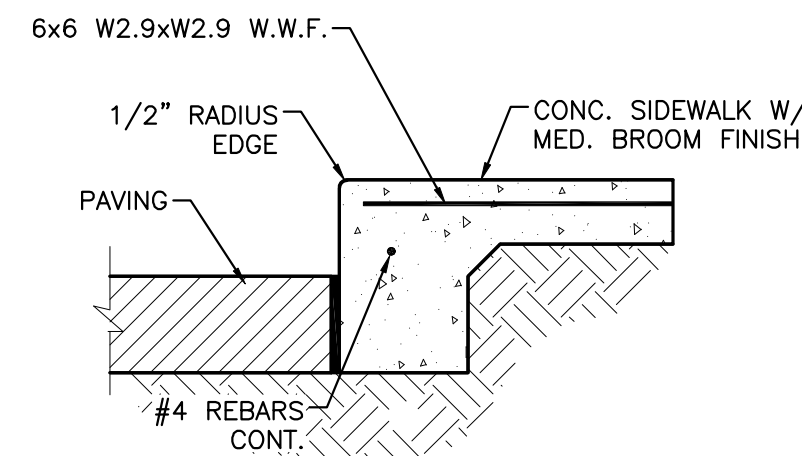
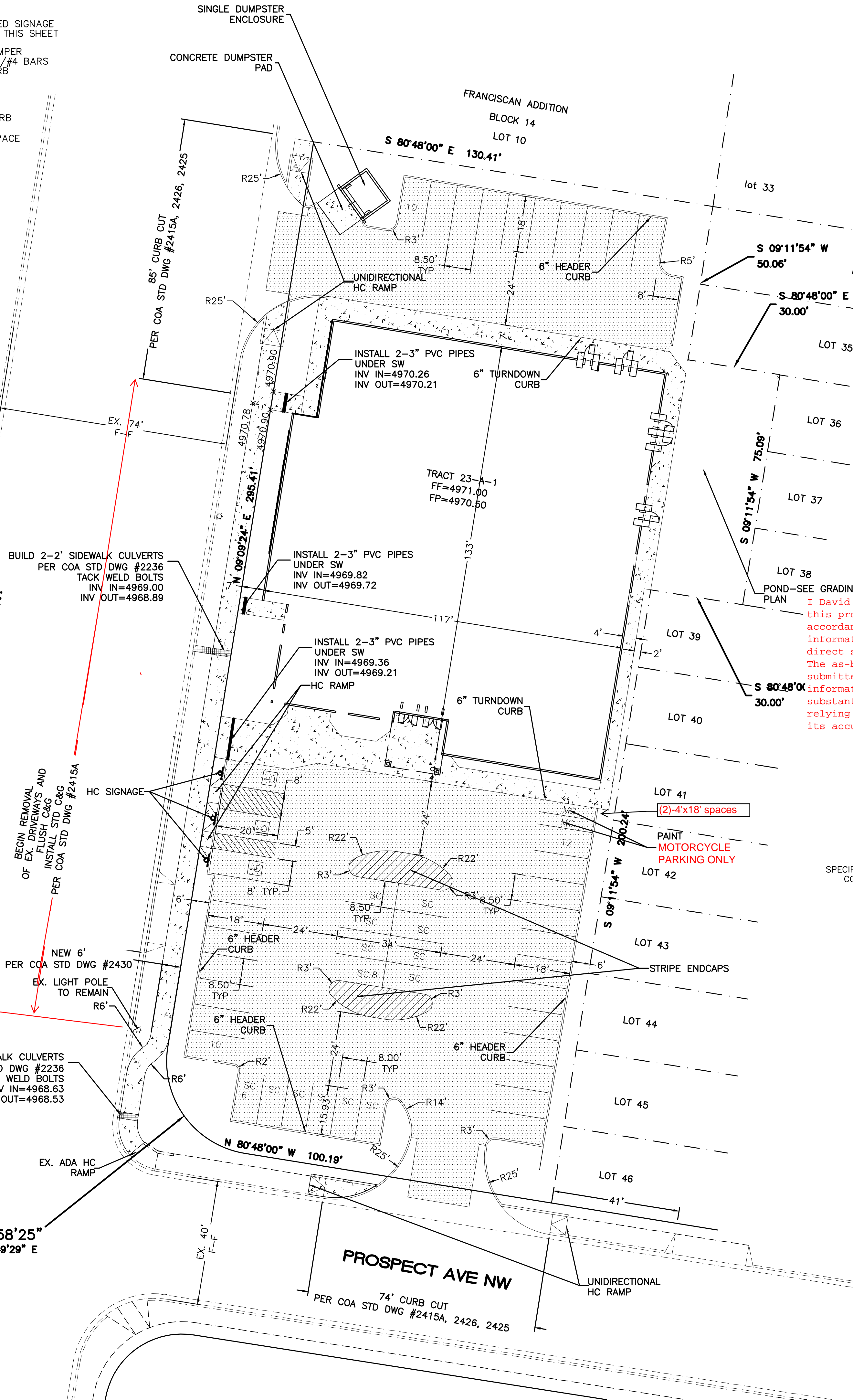
PAINT PIPE BASE
BLUE

PAVING
AREA

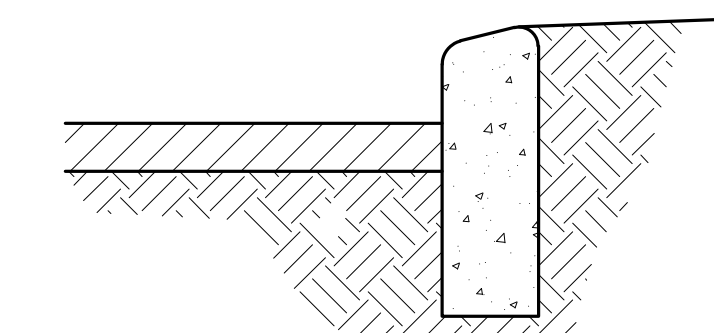
1'-6" DIA. CONC.
BASE 3000 PSI

HANDICAP SIGN
NTS

SECOND STREET NW.



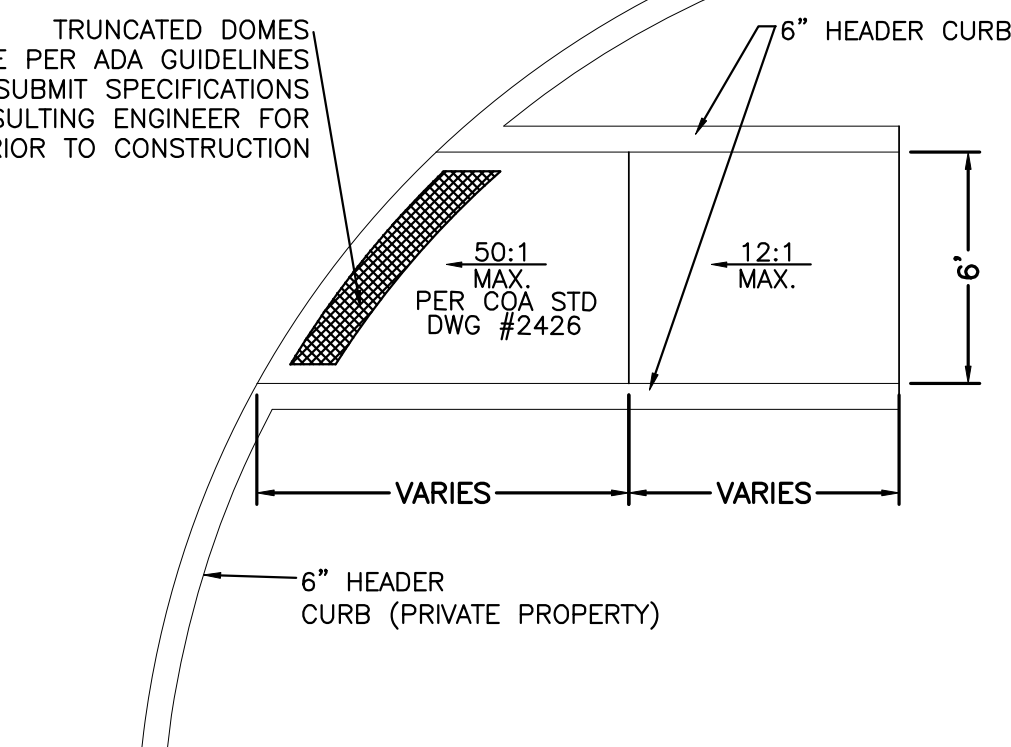
6" TURNDOWN CURB
NTS



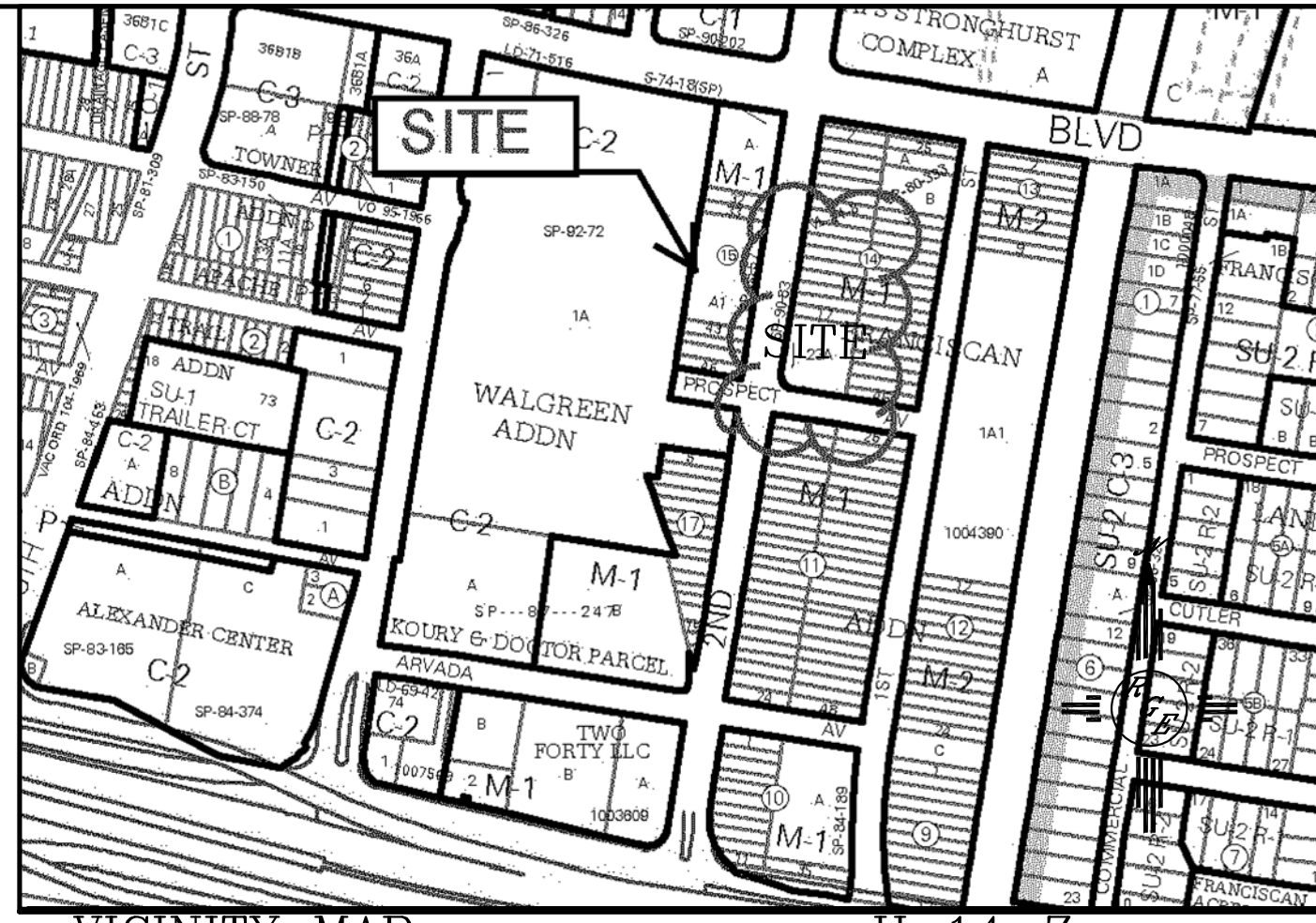
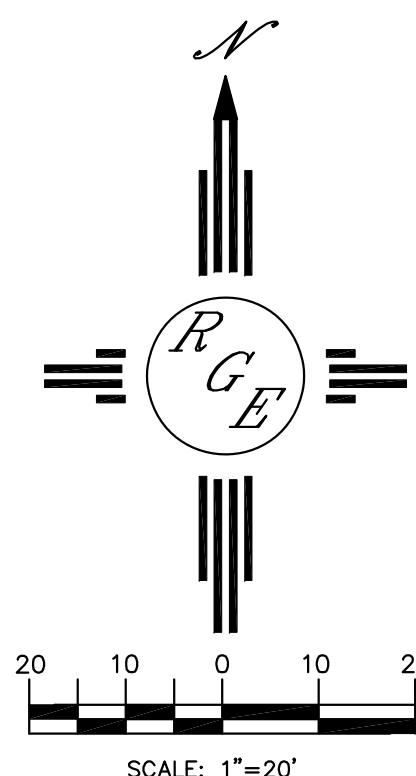
6" HEADER CURB DETAIL
NTS

I David Soule, NMPE 14522, of the firm Rio Grande Engineering, hereby certify that this project has been constructed in substantial compliance with and in accordance with the design intent of the approved plan dated 11/14/13. The record information edited on the original design document has been performed by me or under my direct supervision and is true and correct to the best of my knowledge and belief. The as-built survey was provided DAVID ACOSTA NMPS 21082. The certification is submitted in support of a request for PERMANENT CERTIFICATE OF OCCUPANCY. The record information presented heron is not necessarily complete and intended only to verify substantial compliance of the grading and drainage aspects of this project. Those relying on this record document are advised to obtain independent verification of its accuracy before using it for any other purpose.

SPECIFICATIONS SHALL BE PER ADA GUIDELINES
CONTRACTOR SHALL SUBMIT SPECIFICATIONS
TO CONSULTING ENGINEER FOR
EVALUATION PRIOR TO CONSTRUCTION



UNIDIRECTIONAL WHEELCHAIR RAMP DETAIL (TYP.)
NTS



VICINITY MAP: H-14-Z
LEGAL DESCRIPTION:
TRACT 23-A-1, FRANCISCAN ADDITION

GENERAL NOTES:

1. ALL WHEELCHAIR RAMPS SHALL BE BUILT PER DETAIL THIS SHEET.
2. ALL PRIVATE CURBS SHALL BE 6" TALL UNLESS OTHERWISE NOTED SEE DETAIL SHEET. ALL COA ROW CURBS SHALL BE STD 8" PER COA STD DWG #2415A.
3. ALL HANDICAP RAMPS SHALL BE ADA COMPLIANT.
4. ALL DRIVABLE SURFACES SHALL BE 2" THICK ASPHALT PAVING. **MINIMUM**

SITE DATA

TOTAL ACREAGE:	1.0206 AC±
EXISTING ZONING:	M-2
PROPOSED ZONING:	M-2
PROPOSED USE:	CHURCH
REQUIRED PARKING:	51 SPACES (1 SPACE PER 4 SEATS) -10% BUS CREDIT=46 REQUIRED SPACES
PROVIDED PARKING:	46 SPACES

LEGEND

---	EXISTING CURB & GUTTER
---	EXISTING SIDEWALK
---	PROPOSED 6" HEADER CURB
---	BOUNDARY LINE
---	LOT LINE
---	PROPOSED SIDEWALK
---	PROPOSED ASPHALT PAVING
---	PROPOSED BUILDING
---	CENTERLINE
---	RIGHT-OF-WAY
---	HC SIGNAGE

ENGINEER'S SEAL DAVID SOULE NEW MEXICO 14522 REGISTERED PROFESSIONAL ENGINEER 11/14/13 DAVID SOULE P.E. #14522	NOONDAY TRAFFIC CIRCULATION PLAN <i>Rio Grande Engineering</i> 1606 CENTRAL AVENUE SE SUITE 201 ALBUQUERQUE, NM 87106 (505) 872-0999	DRAWN BY WCWJ DATE 11-13-13 21227-LAYOUT-7-13-12 SHEET # 1 JOB # 21227
--	---	--