



Stormwater Quality Plan Information Sheet and Inspection Fee Schedule

Project Name: _____

Project Location: (address or major cross streets/arroyo) _____

Plan Preparer Information:

Company: _____

Contact: _____

Address: _____

Phone Number: (O) _____ (Cell (optional)) _____

e-Mail: _____

Property Owner Information:

Company: _____

Contact: _____

Address: _____

Phone: _____

e-Mail: _____

I am submitting the ESC plan to obtain approval for:

___ Grading ___ Building Permit ___ Work Order Construction Plans

Note: More than one item can be checked for a submittal

Stormwater Quality Inspection fee: (based on development type and disturbed area)

Commercial	< 2 acres \$300 <input type="checkbox"/>	2 to 5 acres \$500 <input type="checkbox"/>	>5 acres \$800 <input type="checkbox"/>
Land/Infrastructure	< 5 acres \$300 <input type="checkbox"/>	5 to 40 acres \$500 <input type="checkbox"/>	>40 acres \$800 <input type="checkbox"/>
Multi - family	< 5 acres \$500 <input type="checkbox"/>	≥5 acres \$800 <input type="checkbox"/>	
Single Family Residential	<5 acres \$500 <input type="checkbox"/>	5 to 40 acres \$1000 <input type="checkbox"/>	> 40 acres \$1500 <input type="checkbox"/>

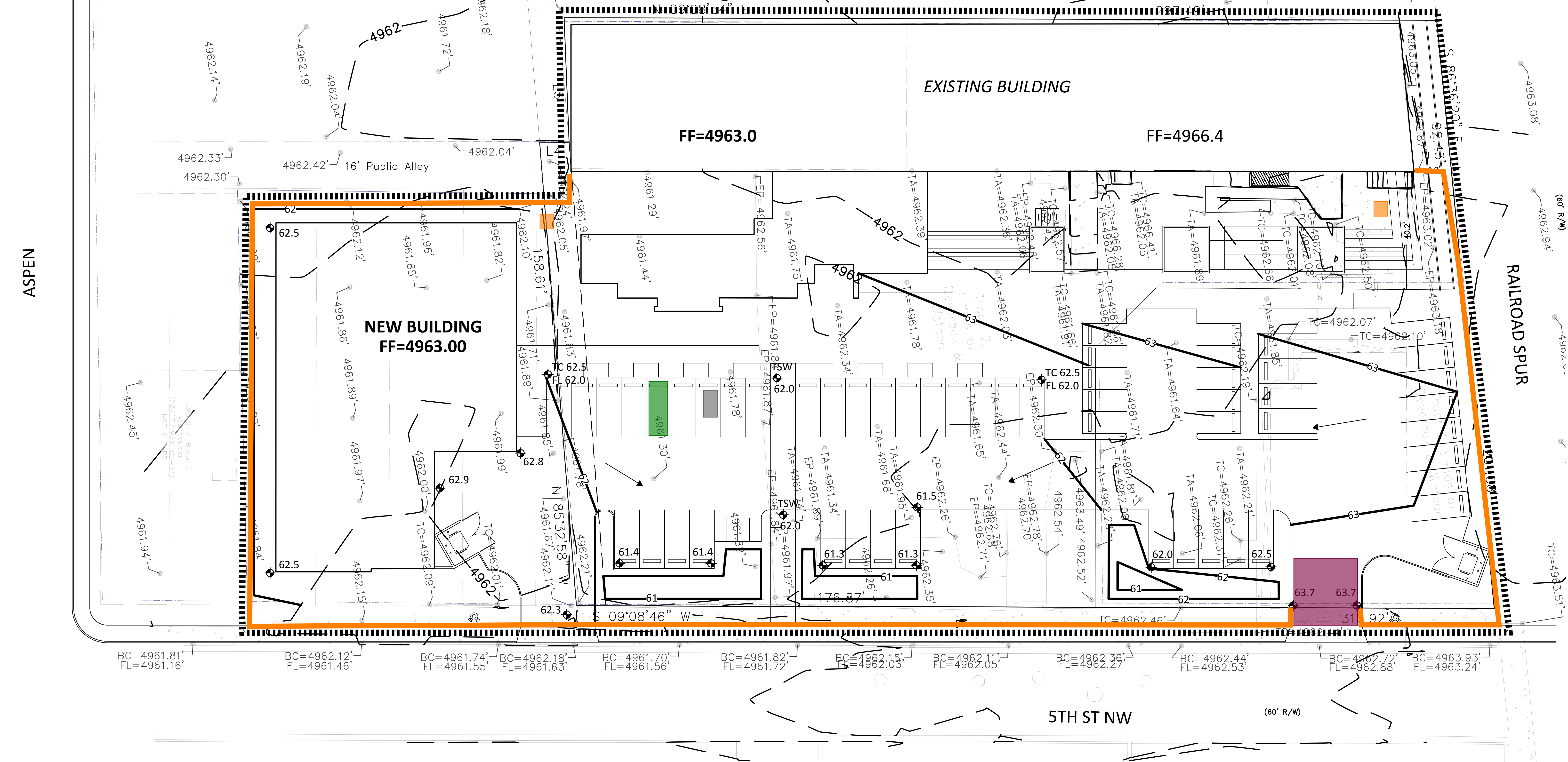
Plan Review fee is \$105 for the first submittal ☐ and \$75.00 for a resubmittal ☐

Total due equals the plan review fee plus the Stormwater Quality Inspection fee.

Total Due \$ _____

If you have questions, please contact Doug Hughes, Stormwater Quality 924-3420, jhughes@cabq.gov

Rev May 2019



BMP MAP LEGEND

- LIMITS OF DISTURBANCE
- PERIMETER BMP (FILTER SOCK PLACE AT BASE OF TEMP. FENCE W/ WINDSCREEN ATTACHED)
- FLOW DIRECTION
- VTC (VEHICLE TRACK-OUT CONTROL)
- PORTABLE TOILETS
- WASTE CONTAINER
- CONCRETE WASHOUT



OPERATOR: T2 BUILDING,LLC

TOTAL SITE AREA: 2.00 ACRES
TOTAL DISTURBED AREA: 1.75 ACRES

RECEIVING WATERS: RIO GRANDE RIVER (TIJERAS ARROYO TO ALAMEDA BRIDGE)

REFER TO THE ESC BMP DETAILS (ESC-2) FOR INSTALLATION, INSPECTION AND MAINTENANCE REQUIREMENTS.

****GRADING PLAN BY OTHERS****

AGENDA GLOBAL 5TH ST. WAREHOUSE REMODEL

TEMPORARY EROSION AND SEDIMENT CONTROL PLAN

Drawn By:
M. VALLEJOS, CPESC, CISEC

03/23/22



ESC-1

Silt Sock

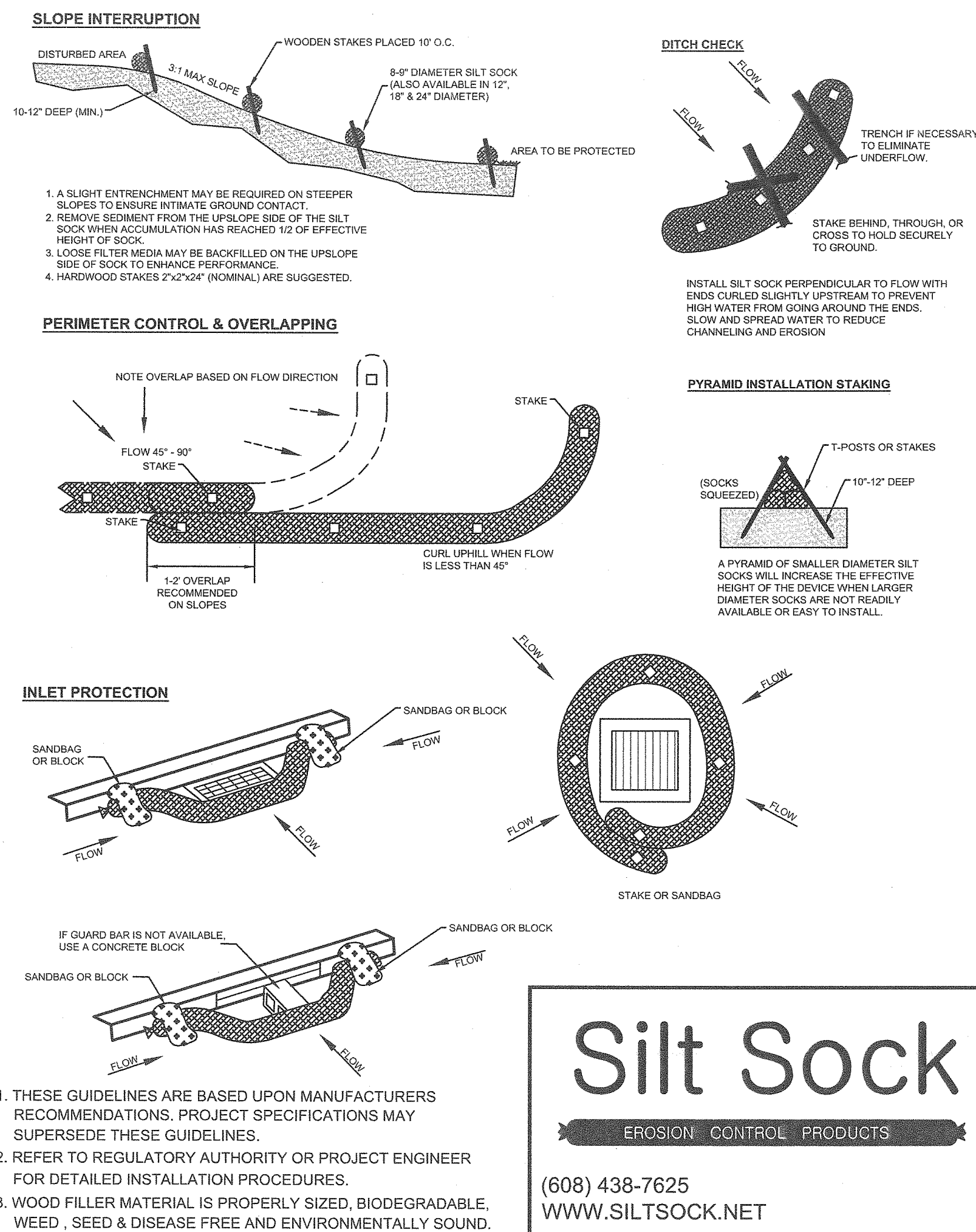
EROSION CONTROL PRODUCTS

www.siltsock.net
Phone: 608-438-7625

8" Ultra

Construction	Tubular Knit	
Chemical Reaction	Inert to most soil chemicals including Alkaline, weak acids and salt	
Properties	Fiber Material	Multi-Filament Polypropylene
	Color	Black
	Melting Point	166°C 330°F
	UV Protection	Photodegradable/ UV Stabilized
	UV Resistance ASTM G-155	100% at 1000 hr.
	Approx. Life Expectancy*	2 – 4 years
Roll Properties (Approx.)	Mesh Opening	1/8"
	Roll Weight	11.8 kg 26 lbs.
	Roll Length - Relaxed	174 m 540 ft.
Applied Roll Length (Approx.)	8" Diameter	146 m 475 ft.
Strength Properties	ASTM 6241 & ASTM 5035	222 psi
Packaging	Package Type	Roll

SILT SOCK INSTALLATION GUIDELINES



Coir Mat Inlet Protection



UV Resistance (ASTM D 4355 – 500 hour exposure) Tensile Properties (ASTM D 5035/ECTC) (4 inch wide strip specimen)

Baseline Properties	
MD – Maximum Load (ppi)	14.6
TD – Maximum Load (ppi)	18.7
MD – Elongation @ Max Load (%)	19.3
TD – Elongation @ Max Load (%)	27.7

500 Hour Exposed Properties	
MD – Maximum Load (ppi)	10.2
TD – Maximum Load (ppi)	13.8
MD – Elongation @ Max Load (%)	16.9
TD – Elongation @ Max Load (%)	16.6

Light Penetration (ECTC Guidelines)	
Baseline Reading	125
Reading with sample	10
% Light Penetration	<8

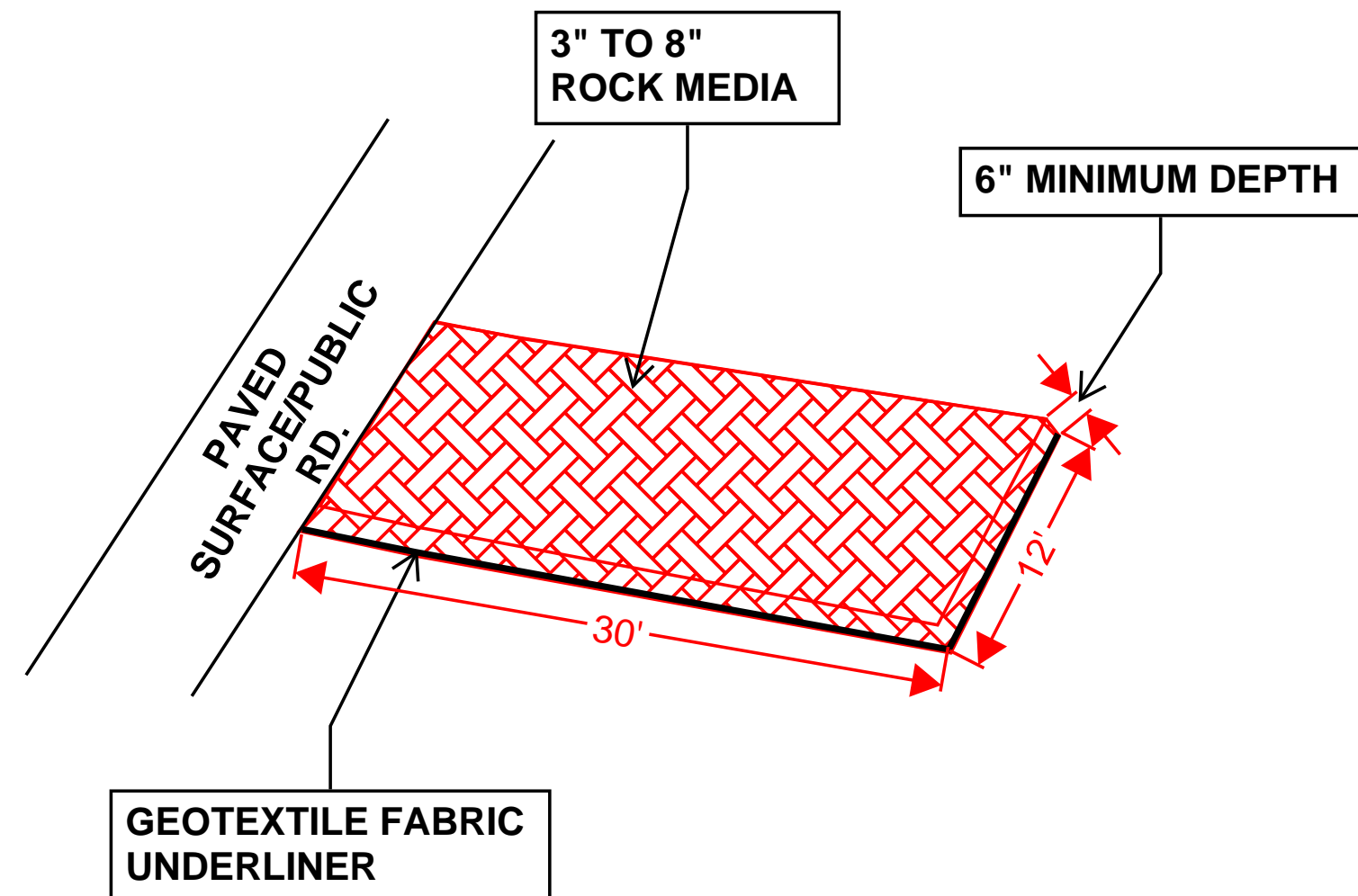
Swell (ECTC)	
Dry thickness (mils)	1984
Thickness after soak (mils)	2098
% change	6

Mass/Unit Area (ASTM D 6565)	
Mass/unit area (oz/sq. yd)	50.89
Mass/unit area (g/sq. meter)	1725

Water Absorption (ASTM D 1117/ECTC)	
Pre-soak Weight (grams)	69
Post-Soak (grams)	152
Weight change (grams)	82
% Weight Change	119

Sediment Control (ASTM D 5141)	
Test material:	Sand sieved thru No. 10 sieve
Filtering Efficiency (%)	40.8
Flow Rate (liter/minute)	150

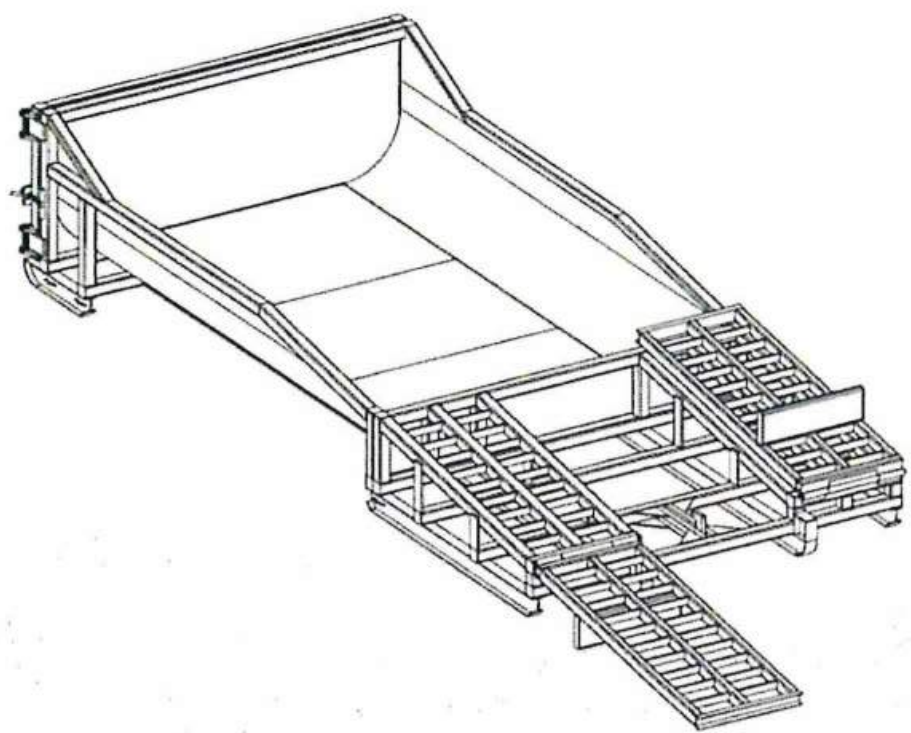
VEHICLE TRACK-OUT CONTROL



NOT TO SCALE

- DIMENSIONS NOTED CAN BE SITE RESTRICTIVE.

PORTABLE CONCRETE WASHOUT CONTAINER



DESCRIPTION

A portable, self-contained and watertight container affixed with ramps that controls, captures and contains caustic concrete wastewater and washout material.

PURPOSE & OBJECTIVE

Allows trade personnel to easily washout concrete trucks, pumps and other equipment associated with cement on site and allows easy off site recycling of the same concrete materials and wastewater.

APPLICATION

Construction projects where concrete, stucco, mortar, grout and cement are used as a construction material or where cementitious wastewater is created.

MAINTENANCE

Inspect and clean out when ¾ full, not allowing the container to overflow.
Inspect wastewater level and request a vacuum if needed.
Inspect subcontractors to ensure that proper housekeeping measures are employed when washing out equipment.

SPECIFICATIONS

The container must be portable and temporary, watertight, equipped with ramps and have a holding capacity to accept washout from approximately 350 yards of poured concrete. A vacuum service must accompany washout container and be used by site superintendent as needed. A rampless container may be used in conjunction with a ramped container or by itself if a concrete pump is not needed. The washwater must be disposed of or treated and recycled in an environmentally safe manner and in accordance with federal, state or local regulatory guidelines.

TARGETED POLLUTANTS

Caustic wastewater (high pH level near 12 units)
Suspended solids
Assorted Metals; Chromium VI, Nickel, Sulfate, Potassium, Magnesium and Calcium Compounds

ESC Plan Standard Notes (2021-03-24)

- All Erosion and Sediment Control (ESC) work on these plans, except as otherwise stated or provided hereon shall be permitted, constructed, inspected, and maintained in accordance with:
 - The City Ordinance § 14-5-2-11, the ESC Ordinance,
 - The EPA's 2017 Construction General Permit (CGP), and
 - The City Of Albuquerque Construction BMP Manual.
- All BMP's must be installed prior to beginning any earth moving activities except as specified hereon in the Phasing Plan. Construction of earthen BMP's such as sediment traps, sediment basins, and diversion berms shall be completed and inspected prior to any other construction or earthwork. Self-inspection is required after installation of the BMPs and prior to beginning construction.
- Self-inspections - At a minimum a routine compliance self-inspection is required to review the project for compliance with the Construction General Permit once every 14 days and after any precipitation event of 1/4 inch or greater until the site construction has been completed and the site determined as stabilized by the city. Reports of these inspections shall be kept by the person or entity authorized to direct the construction activities on the site and made available upon request.
- Corrective action reports must be kept by the person or entity authorized to direct the construction activities on the site and made available upon request.
- Stabilization reports must be kept by the person or entity authorized to direct the construction activities on the site and made available upon request. Reports should include records of weed removal per City Ordinance (§ 9-8-1), sterilization, soil test results and recommendation, materials and manufacturer's specifications for application rates, estimated functional longevity, methods of application, inspection and maintenance. The reduced self-inspection schedule in CGP 4.4.1 applies to stabilized area and any damaged or worn stabilization must be identified in the reports along with weed problems. Corrective actions for stabilization shall be documented in a stabilization report including actual rates and dates of stabilization, and the materials and manufacturer's specifications used.
- BMPs shall be inspected and maintained until all disturbed areas are stabilized in accordance with the Final Stabilization Criteria (CGP 2.2.14.b). Generally, all disturbed areas, other than structures and impervious surfaces, must have uniform perennial vegetation that provides 70 percent or more of the cover provided by native vegetation or seed the disturbed area and provide non-vegetative mulch that provides cover for at least three years without active maintenance. Final stabilization must be approved by the City of Albuquerque prior to removal of BMPs and discontinuation of inspections.



OPERATOR: T2 BUILDING, LLC

TOTAL SITE AREA: 2.00 ACRES
TOTAL DISTURBED AREA: 1.75 ACRES

RECEIVING WATERS: RIO GRANDE RIVER
(TIJERAS ARROYO TO ALAMEDA BRIDGE)

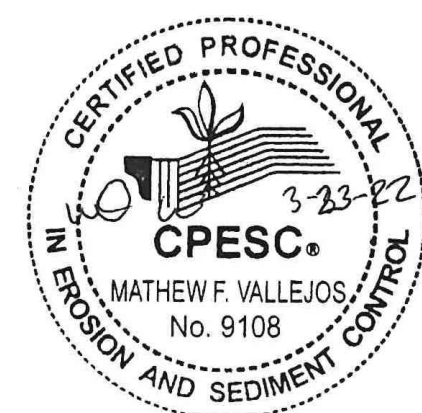
REFER TO THE ESC BMP DETAILS (ESC-2)
FOR INSTALLATION, INSPECTION AND
MAINTENANCE REQUIREMENTS.

AGENDA GLOBAL 5TH ST. WAREHOUSE
REMODEL

TEMPORARY EROSION AND SEDIMENT
CONTROL PLAN

Drawn By:
M. VALLEJOS, CPESC, CISEC

03/23/22



ESC-2

Start Date-Finish Date (dates to be marked on site plan by operator)		Construction Activity, BMPs, and location
Initial Phase		Pre-Site Grading 1. Install perimeter BMPs (silt fence, erosion control logs, downstream inlet protection, etc.) 2. Construct VTC. 3. Set up construction trailer, construction barrier, and material storage areas, etc. 4. Install sanitary facilities and dumpster 5. Implement stabilization procedures where work is complete or ceases (per section 2.2.14 of the 2022 EPA CGP)
Interim Phase		Site Grading/ Building Construction 1. Mass <u>grade</u> site 2. Construct utilities, infrastructure 3. Building, pavement construction 4. Implement stabilization procedures where work is complete or ceases (per section 2.2.14 of the 2022 EPA CGP)
Final Phase		Final Stabilization 1. Implement stabilization procedures where work is complete or ceases (per section 2.2.14 of the 2022 EPA CGP) 2. Prepare final seeding and landscaping 3. Monitor stabilized areas until final stabilization is reached 4. Remove temporary control BMPs and stabilize any areas disturbed by theremoval

Nature of Construction Activity:
This project consists of existing warehouse remodel and new construction. This project covers approximately 2.01 acres of the Agenda Global 5th St. Warehouse Remodel project. T2 Building, LLC is responsible for all construction activities including earthwork, infrastructure, utilities, flatwork, pavement and vertical construction. The activities to occur on-site are consistent with commercial construction.

Project/Site Name: Agenda Global 5th St. Warehouse Remodel
Project Street/Location: 1715 5th St. NW
City: Albuquerque
State: NM
Zip Code: 87102
County: Bernalillo

Project Latitude: 35.10205 **Longitude:** -106.65017

Determination of Latitude/Longitude:
☐ USGS topographic map (scale: _____)
☐ EPA Web Site ☒ NM OpenEnviroMap ☐ GPS
☐ Other (please specify): _____

Function of Construction Activity:
☐ Residential ☒ Commercial ☐ Industrial ☐ Linear (roadway)
☐ Linear (Utility) ☐ Development ☐ Other (specify): _____

ROLE	COMPANY	REPRESENTATVIE NAME	PHONE	EMAIL
OPERATOR	T2 BUILDING, LLC	CHRIS TAYLOR	505-450-4703	CTAYLOR@AGENDA-GLOBAL.COM
OWNER	AGENDA REAL ESTATE HOLDINGS, LLC	DOUG TURNER	505-440-5445	DWTURNER@AGENDA-GLOBAL.COM
BMP MAINTENANCE	T2 BUILDING, LLC	HAROLD STANLEY	505-803-8582	HSTANLEY@HDSTAN.COM
SWPPP INSPECTIONS	T2 BUILDING, LLC	HAROLD STANLEY	505-803-8582	HSTANLEY@HDSTAN.COM



Rio Grande (Tijeras Arroyo to Alameda Bridge)			AU IR CATEGORY	LOCATION DESCRIPTION	
			5/5C	HUC: 13020203	Rio Grande-Albuquerque
AU ID	WQS REF	WATER TYPE	SIZE	ASSESSED	MONITORING SCHEDULE
NM-2105_51	20.6.4.105	RIVER	15.6 MILES	2020	2023
USE	ATTAINMENT	CAUSE(S)	FIRST LISTED	TMDL DATE	PARAMETER IR CATEGORY
IRR	Fully Supporting				
LW	Fully Supporting				
MWWAL	Not Supporting	Mercury - Fish Consumption Advisory PCBS - Fish Consumption Advisory Dissolved oxygen Temperature	2020 2010 2008 2010	2023 (est.) 2023 (est.)	5/5C 5/5C 5/5A 5/5A
PC	Not Supporting	E. coli	2020	6/30/2010	4A
PWS	Not Assessed				
WH	Fully Supporting				
AU Comment: TMDL for E. coli. Fish Consumption Advisory listings are based on NM's current fish consumption advisories for this water body. Per USEPA guidance, these advisories demonstrate non-attainment of CWA goals stating that all waters should be "fishable." Therefore, the impaired designated use is the associated aquatic life even though human consumption of the fish is the actual concern.					



OPERATOR: T2 BUILDING, LLC

TOTAL SITE AREA: 2.00 ACRES
TOTAL DISTURBED AREA: 1.75 ACRES

RECEIVING WATERS: RIO GRANDE RIVER
(TIJERAS ARROYO TO ALAMEDA BRIDGE)

REFER TO THE ESC BMP DETAILS (ESC-2)
FOR INSTALLATION, INSPECTION AND
MAINTENANCE REQUIREMENTS.

AGENDA GLOBAL 5TH ST. WAREHOUSE
REMODEL

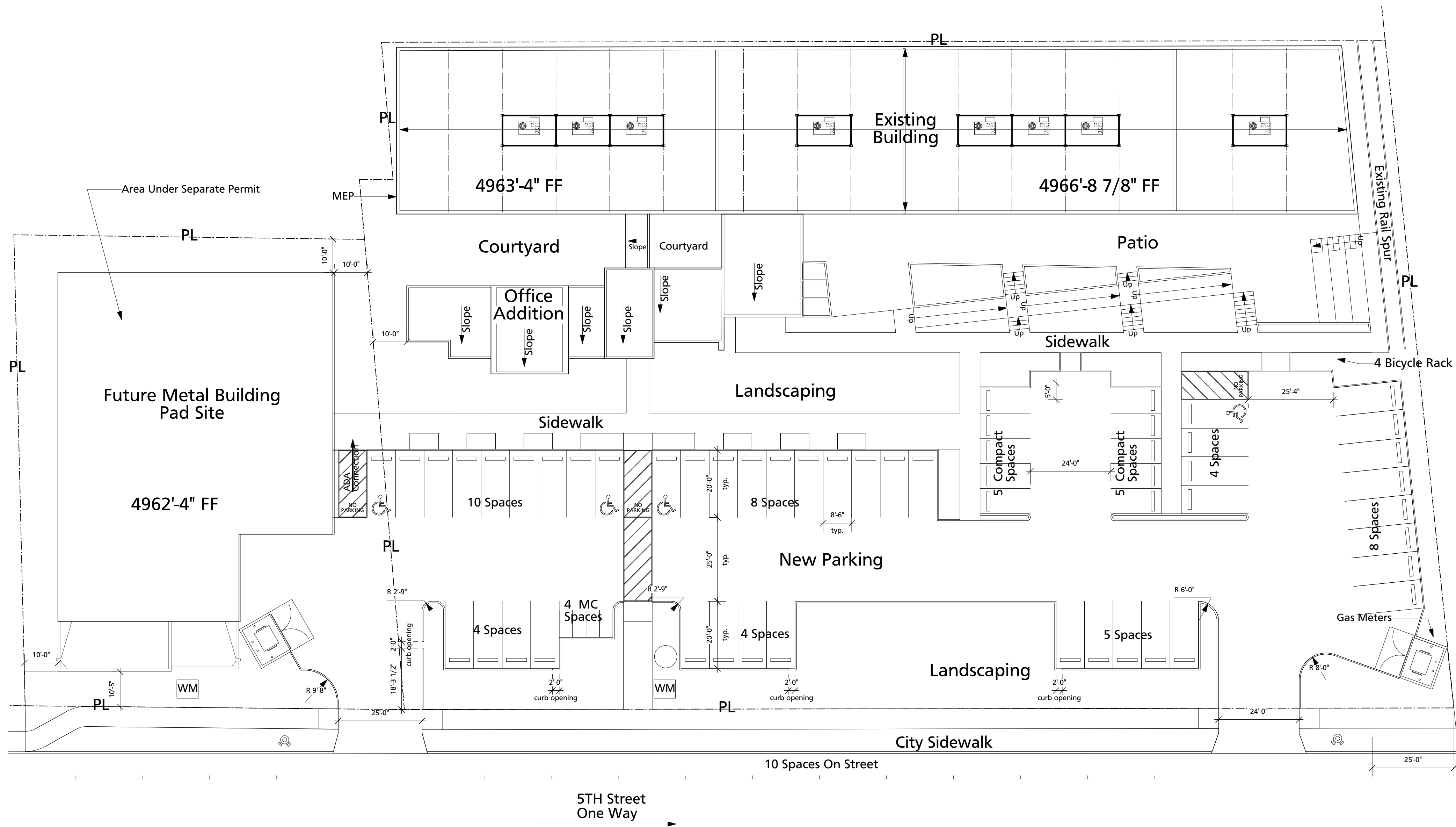
TEMPORARY EROSION AND SEDIMENT
CONTROL PLAN

Drawn By:
M. VALLEJOS, CPESC, CISEC

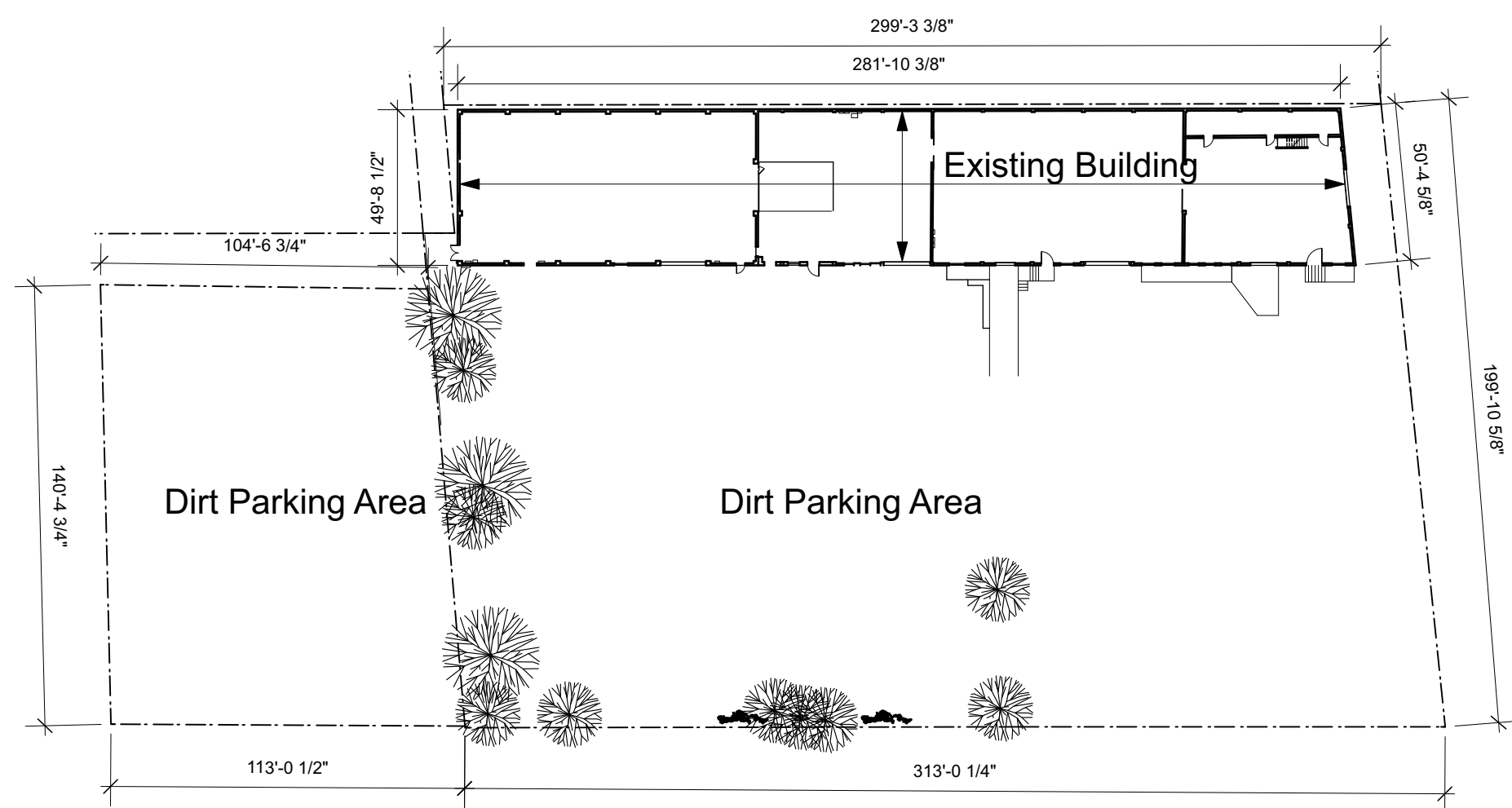
03/23/22



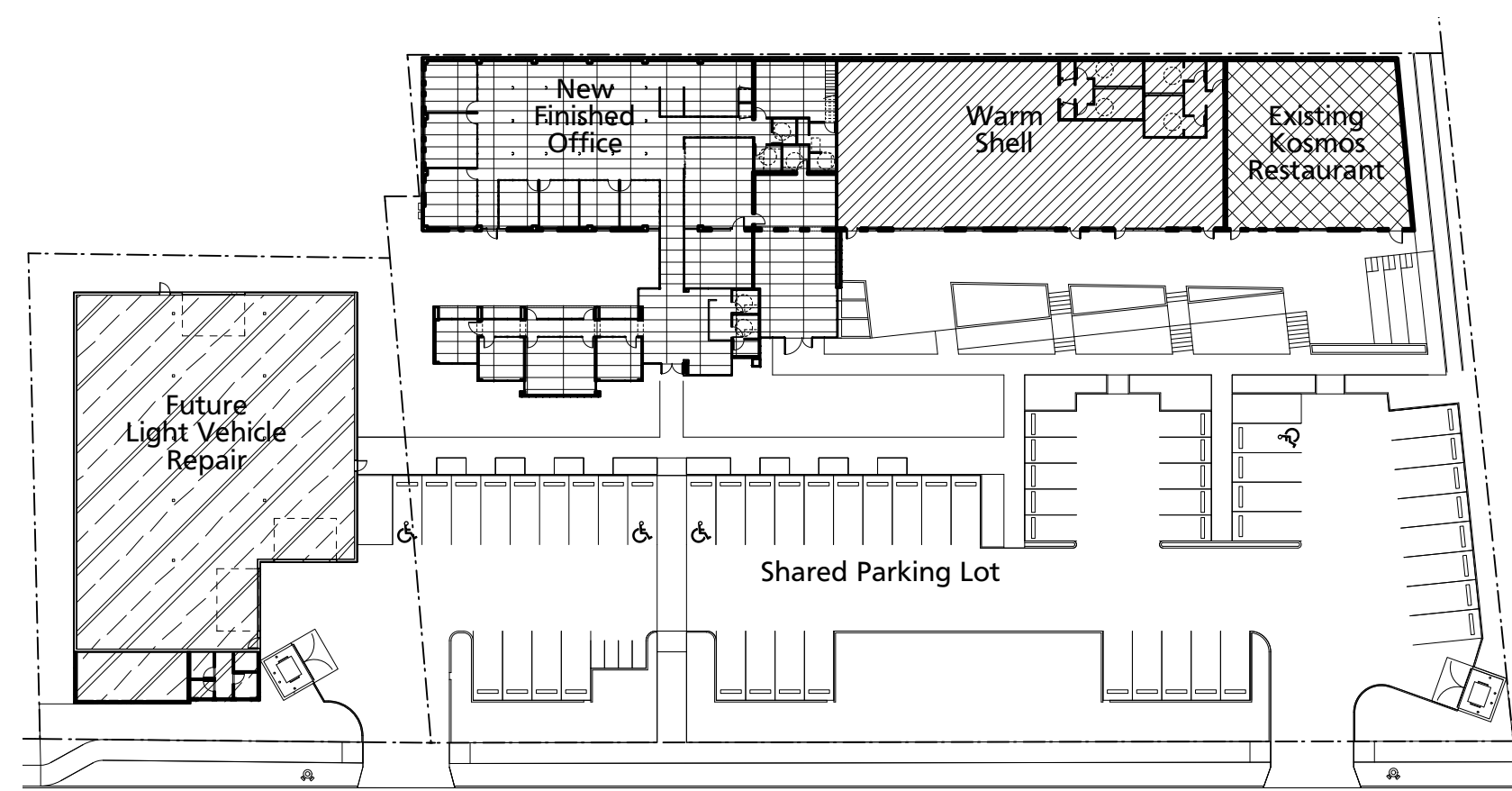
ESC-3



1 Site Plan-
Scale: 1" = 20'-0"



2 Existing Site Plan-
Scale: 1" = 50'-0"



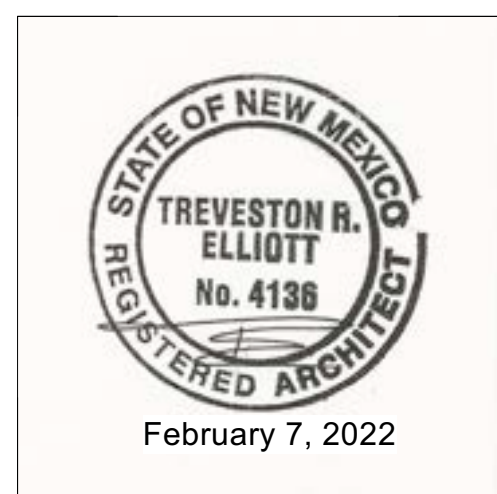
3 Use Site Plan-
Scale: 1" = 50'-0"

TREVESTON ELLIOTT
ARCHITECT

811 12TH ST. NW
ALBUQUERQUE, NEW MEXICO
87102
C 505.259.4617
treveston@tearchitect.com
www.tearchitect.com

Fábrica en la Quinta

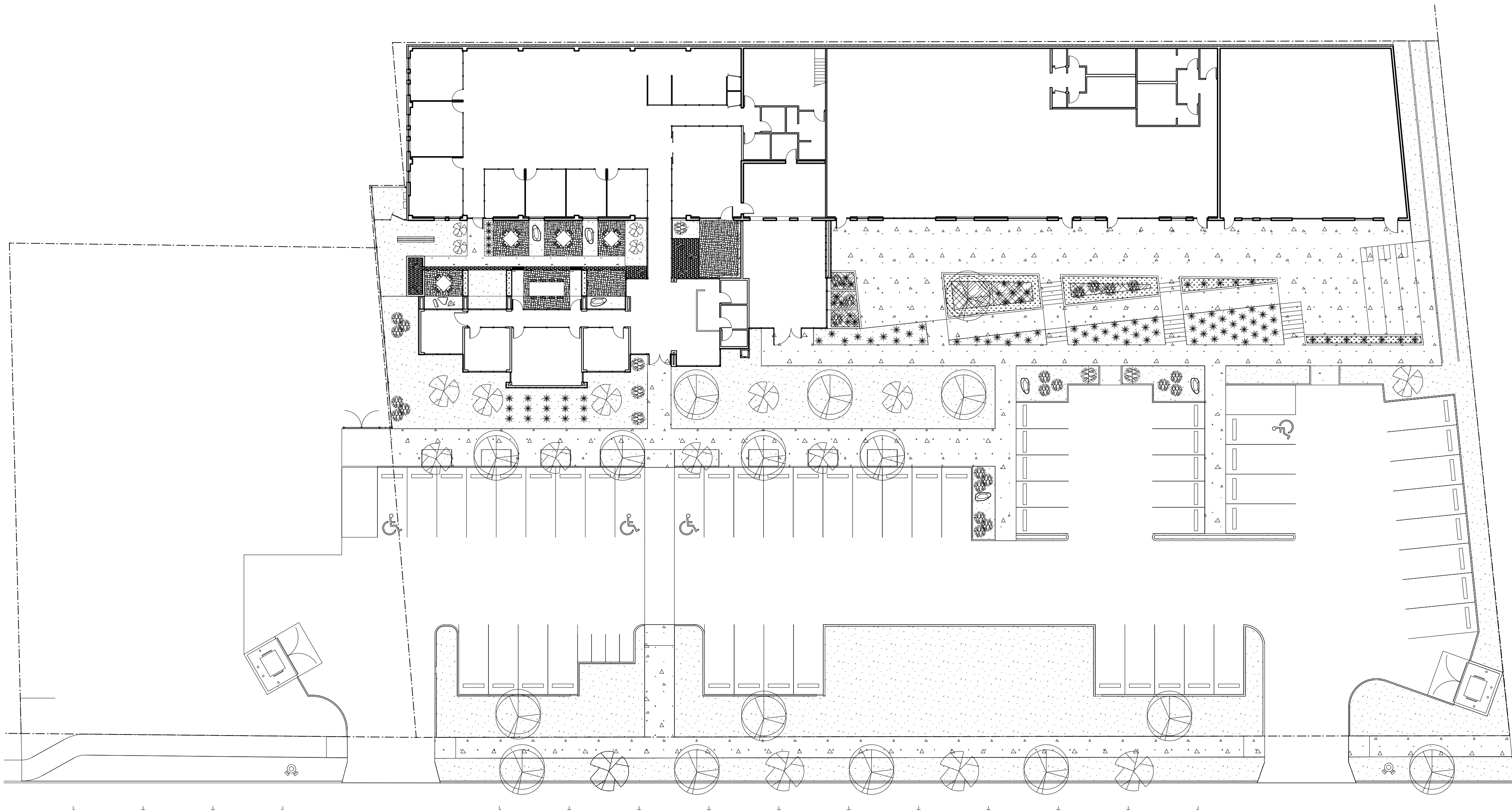
ALBUQUERQUE, NEW MEXICO 87102



Date: February 7, 2022

Sheet:
Site Plan
General Info

A-081



KEYED LANDSCAPE NOTES:

1. PLANTING TO INCLUDE DROUGHT - TOLERANT NATIVE SHRUBS AND NATIVE GRASSES TO TRANSITION TO UNDEVELOPED OPEN SPACE AS APPLICABLE.

GENERAL LANDSCAPE NOTES:

1. PROVIDE AND INSTALL TREES, SHRUBS, PERENNIALS, ORNAMENTAL GRASSES AND GROUND COVER WITHIN THE PLANTING AREAS SHOWN ON THE PLAN. REPRESENTATIVE PLANTS AND SIZES ARE SHOWN ON THE ATTACHED PLANTING LIST.

2. ALL PLANTING BEDS ARE TO RECEIVE 3" TO 4" DEPTH OF BUILDLOGY (OR APPROVED EQUAL) 1" CRUSHED GRAVEL OVER FILTER FABRIC THROUGHOUT THE LIMITS OF THE PLANTING AREAS.

GENERAL IRRIGATION NOTES:

ALL PLANTINGS WILL BE IRRIGATED BY MEANS OF AN UNDERGROUND PVC IRRIGATION SYSTEM UTILIZING FIXED PRECIPITATION RATE BUBBLER HEADS. BUBBLERS HEADS WILL BE SERVED BY LATERAL LINES CONTROLLED BY SEVERAL STRATEGICALLY PLACED REMOTE CONTROL VALVES. REMOTE CONTROL VALVES WILL BE SERVED BY A MASTER IRRIGATION LINE CONTROLLED BY A MASTER VALVE INSTALLED IN CLOSE PROXIMITY TO A REDUCED PRESSURE TYPE BACKFLOW PREVENTER POSITIONED WITHIN A HOT BOX NEAR PROPOSED CITY OF GALLUP IRRIGATION WATER METER. AN ELECTRIC CONTROLLER WILL BE WALL MOUNTED AT A SECURE LOCATION TO OPERATE THE VALVES.

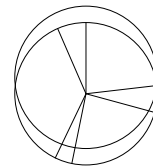
1. PROVIDE AND INSTALL A BUBBLER BASED, PVC IRRIGATION SYSTEM THROUGHOUT PLANTING AREAS.
2. PROVIDE AND INSTALL IRRIGATION BUBBLERS AT THE BASE OF ALL PLANTS IN ACCORDANCE WITH THE SCHEDULE SHOWN ON THE PLANTING PLAN.
3. PROVIDE AND INSTALL CLASS 200 PVC LATERAL IRRIGATION LINES BETWEEN REMOTE CONTROL VALVES AND BUBBLERS.
4. PROVIDE AND INSTALL A 1-1/2" SIZED REDUCED PRESSURE TYPE BACKFLOW PREVENTION DEVICE WITHIN A HOT BOX (FOR FREEZE PROTECTION)
5. PROVIDE AND INSTALL A 1-1/2" SIZED MASTER VALVE IN A SUBGRADE VALVE BOX IMMEDIATELY ADJACENT TO AND DOWNSTREAM OF THE BACKFLOW PREVENTION DEVICE FOR CONTROLLING WATER TO THE PROPOSED MASTER LINES.
6. PROVIDE AND INSTALL APPROPRIATELY SIZED REMOTE CONTROL VALVES WITHIN SUBGRADE VALVE BOXES AT LOCATIONS TO BE DETERMINED WITH FINAL CONSTRUCTION DOCUMENTS.
7. PROVIDE AND INSTALL AN ELECTRIC CONTROLLER IN A WALL MOUNTED BOX FOR OPERATIONAL CONTROL OF VALVES.
8. PROVIDE AND INSTALL REMOTE CONTROL WIRE IN BETWEEN THE IRRIGATION CONTROLLER AND THE VALVES.
9. PROVIDE AND INSTALL IRRIGATION SLEEVES AT LOCATIONS AS NEEDED FOR IRRIGATION LINES BENEATH PAVING.

AREA:

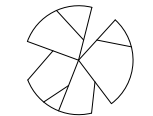
Site Area 1.41 Acres	61,473 sq.ft.
Building Footprint	16,168 sq.ft.
Parking Lot Area	19,894 sq.ft.
Sidewalk / Patio Area	9,447sq.ft.

Landscape Area Required per 5-6(C)(2)(B) DT-UCMS-PT 10% of 45,305 sq.ft. = 4,305 sq.ft.
Landscape Area Provided: 15,964 sq.ft.

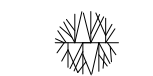
Plant Material



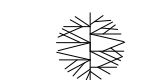
New Mexico Olive - *Forestiera Neomexicana*



Desert Willow - *Chilopsis Linearis*



Apache Plume - *Fallugia Paradoxa*



Upright Rosemary - *Rosmarinus officinalis*



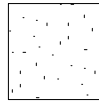
Silky Threadgrass - *Nassella syn.stipa tenuissima*



Large Boulder

Hardscape / Groundcover Key

All types are 'Rock Mountain Stone' or approved eq.



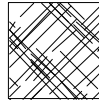
Crusher Fines -



Cobblestone Paving -



Concrete -



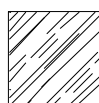
Planting Soil w/. 3-4 Mulch -



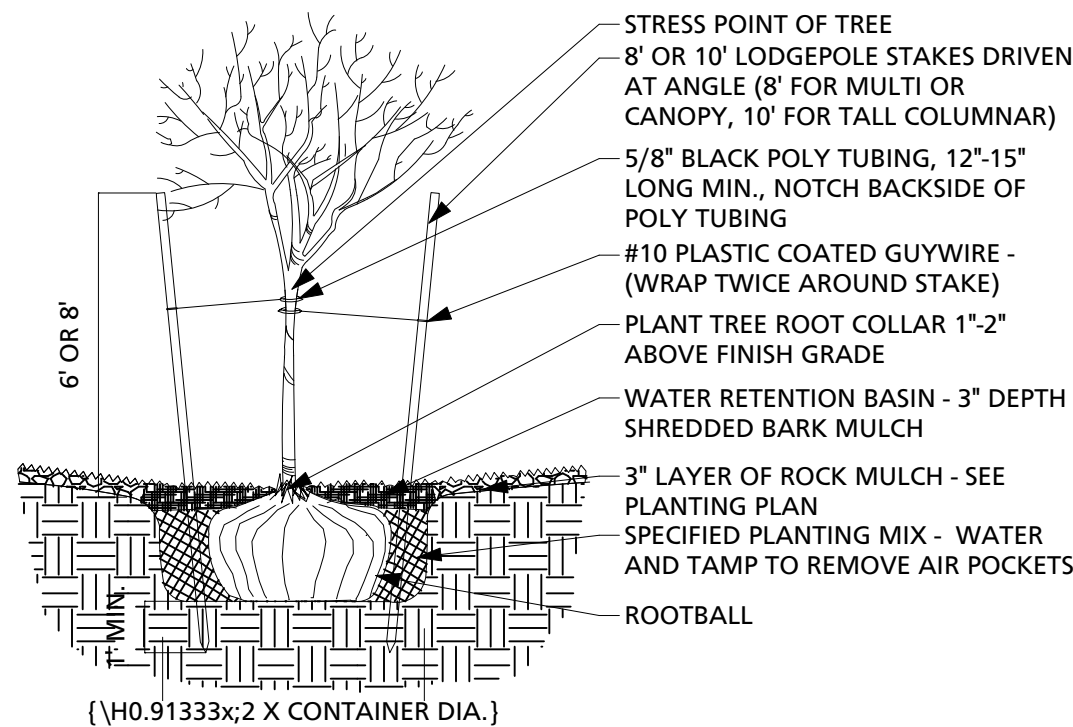
Annual Planing Area w/. 3-4 Mulch -



Water -



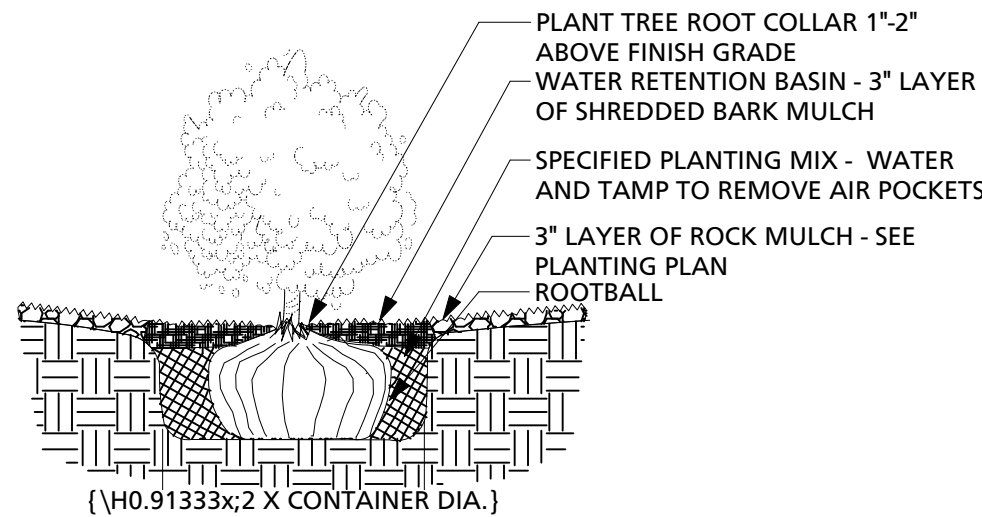
Living Wall -



2 Tree Planting
Scale: NTS

NOTES:

- A. THE WATER RETENTION BASIN SHALL BE TWICE THE PLANTING PIT DIAMETER.
- B. THE EDGES OF THE WATER RETENTION BASIN SHALL BE SMOOTHLY FORMED WITH NO OBTRUSIVE EDGES.
- C. REMOVE ROPE AND BURLAP AFTER PLANTING.



3 Shurb Planting
Scale: NTS

NOTES:

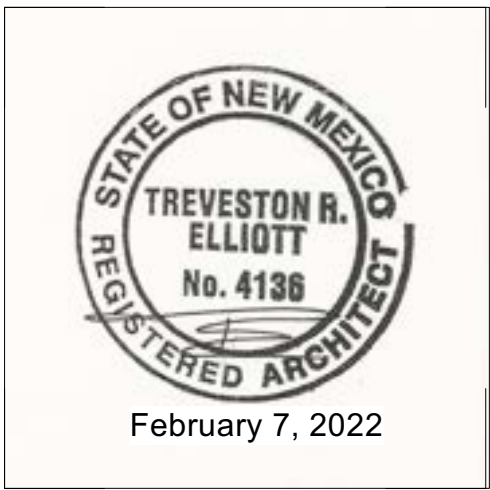
- A. THE WATER RETENTION BASIN SHALL BE TWICE THE PLANTING PIT DIAMETER.
- B. THE EDGES OF THE WATER RETENTION BASIN SHALL BE SMOOTHLY FORMED WITH NO OBTRUSIVE EDGES.

TREVESTON ELLIOTT
ARCHITECT

811 12TH ST. NW
ALBUQUERQUE, NEW MEXICO
87102
C 505.259.4617
treveston@tsearchitect.com
www.tsearchitect.com

Fábrica en la Quinta

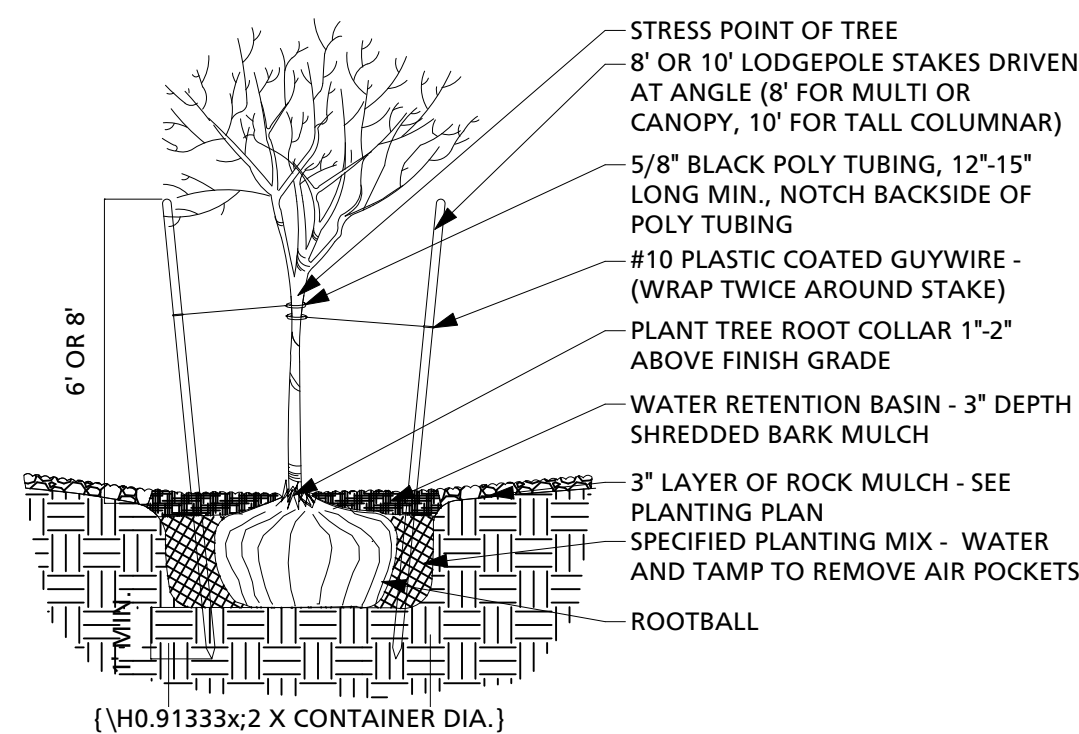
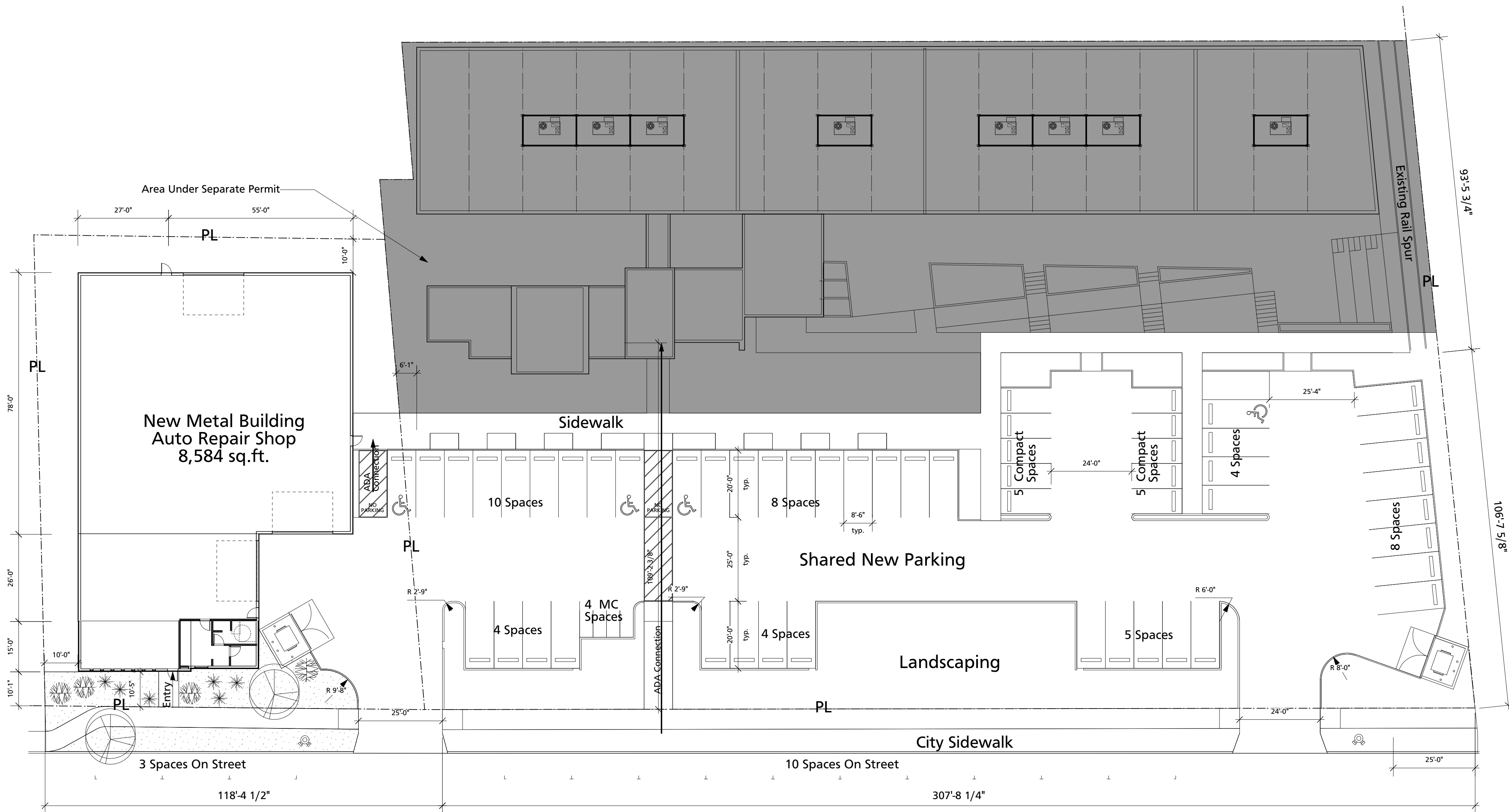
ALBUQUERQUE, NEW MEXICO 87102



Date: February 7, 2022

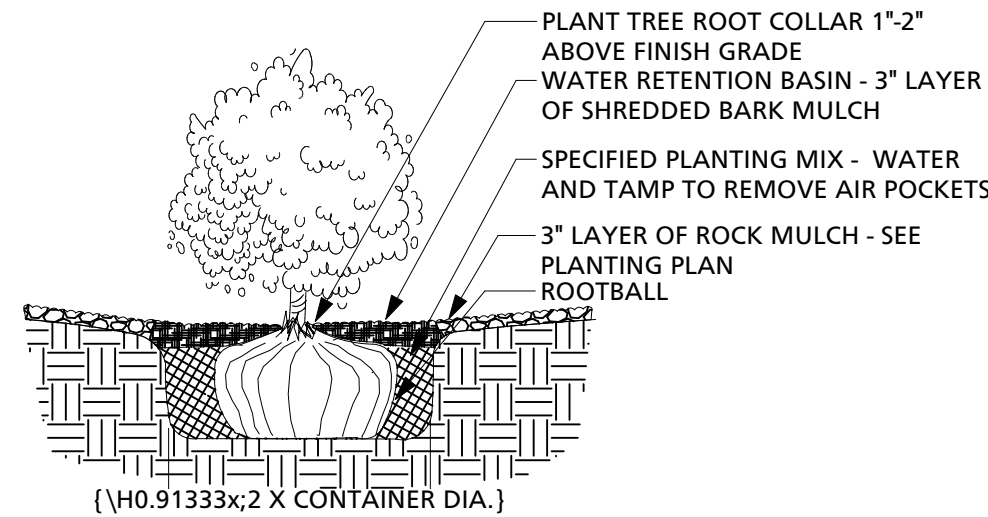
Sheet:
Landscape Plan

LS-101



2 Tree Planting
Scale: NTS

- NOTES:
A. THE WATER RETENTION BASIN SHALL BE TWICE THE PLANTING PIT DIAMETER.
B. THE EDGES OF THE WATER RETENTION BASIN SHALL BE SMOOTHLY FORMED WITH NO OBTRUSIVE EDGES.
C. REMOVE ROPE AND BURLAP AFTER PLANTING.



3 Shrub Planting
Scale: NTS

- NOTES:
A. THE WATER RETENTION BASIN SHALL BE TWICE THE PLANTING PIT DIAMETER.
B. THE EDGES OF THE WATER RETENTION BASIN SHALL BE SMOOTHLY FORMED WITH NO OBTRUSIVE EDGES.

1 Site Plan-
Scale: 1" = 20'-0"

- KEYED LANDSCAPE NOTES:
1. PLANTING TO INCLUDE DROUGHT - TOLERANT NATIVE SHRUBS AND NATIVE GRASSES TO TRANSITION TO UNDEVELOPED OPEN SPACE AS APPLICABLE.

- GENERAL LANDSCAPE NOTES:
1. PROVIDE AND INSTALL TREES, SHRUBS, PERENNIALS, ORNAMENTAL GRASSES AND GROUND COVER WITHIN THE PLANTING AREAS SHOWN ON THE PLAN. REPRESENTATIVE PLANTS AND SIZES ARE SHOWN ON THE ATTACHED PLANTING LIST.
2. ALL PLANTING BEDS ARE TO RECEIVE 3" TO 4" DEPTH OF BUILDLOGY (OR APPROVED EQUAL) 1" CRUSHED GRAVEL OVER FILTER FABRIC THROUGHOUT THE LIMITS OF THE PLANTING AREAS.

- GENERAL IRRIGATION NOTES:
ALL PLANTINGS WILL BE IRRIGATED BY MEANS OF AN UNDERGROUND PVC IRRIGATION SYSTEM UTILIZING FIXED PRECIPITATION RATE BUBBLER HEADS. BUBBLERS HEADS WILL BE SERVER BY LATERAL LINES CONTROLLED BY SEVERAL STRATEGICALLY PLACED REMOTE CONTROL VALVES. REMOTE CONTROL VALVES WILL BE SERVED BY A MASTER IRRIGATION LINE CONTROLLED BY A MASTER VALVE INSTALLED IN CLOSE PROXIMITY TO A REDUCED PRESSURE TYPE BACKFLOW PREVENTER POSITIONED WITHIN A HOT BOX NEAR PROPOSED CITY OF GALLUP IRRIGATION WATER METER. AN ELECTRIC CONTROLLER WILL BE WALL MOUNTED AT A SECURE LOCATION TO OPERATE THE VALVES.
1. PROVIDE AND INSTALL A BUBBLER BASED, PVC IRRIGATION SYSTEM THROUGHOUT PLANTING AREAS.
2. PROVIDE AND INSTALL IRRIGATION BUBBLERS AT THE BASE OF ALL PLANTS IN ACCORDANCE WITH THE SCHEDULE SHOWN ON THE PLANTING PLAN.
3. PROVIDE AND INSTALL CLASS 200 PVC LATERAL IRRIGATION LINES BETWEEN REMOTE CONTROL VALVES AND BUBBLERS.
4. PROVIDE AND INSTALL A 1-1/2" SIZED REDUCED PRESSURE TYPE BACKFLOW PREVENTION DEVICE WITHIN A HOT BOX (FOR FREEZE PROTECTION)
5. PROVIDE AND INSTALL A 1-1/2" SIZED MASTER VALVE IN A SUBGRADE VALVE BOX IMMEDIATELY ADJACENT TO AND DOWNSTREAM OF THE BACKFLOW PREVENTION DEVICE FOR CONTROLLING WATER TO THE PROPOSED MASTER LINES.
6. PROVIDE AND INSTALL APPROPRIATELY SIZED REMOTE CONTROL VALVES WITHIN SUBGRADE VALVE BOXES AT LOCATIONS TO BE DETERMINED WITH FINAL CONSTRUCTION DOCUMENTS.
7. PROVIDE AND INSTALL AN ELECTRIC CONTROLLER IN A WALL MOUNTED BOX FOR OPERATIONAL CONTROL OF VALVES.
8. PROVIDE AND INSTALL REMOTE CONTROL WIRE IN BETWEEN THE IRRIGATION CONTROLLER AND THE VALVES.
9. PROVIDE AND INSTALL IRRIGATION SLEEVES AT LOCATIONS AS NEEDED FOR IRRIGATION LINES BENEATH PAVING.

AREA:

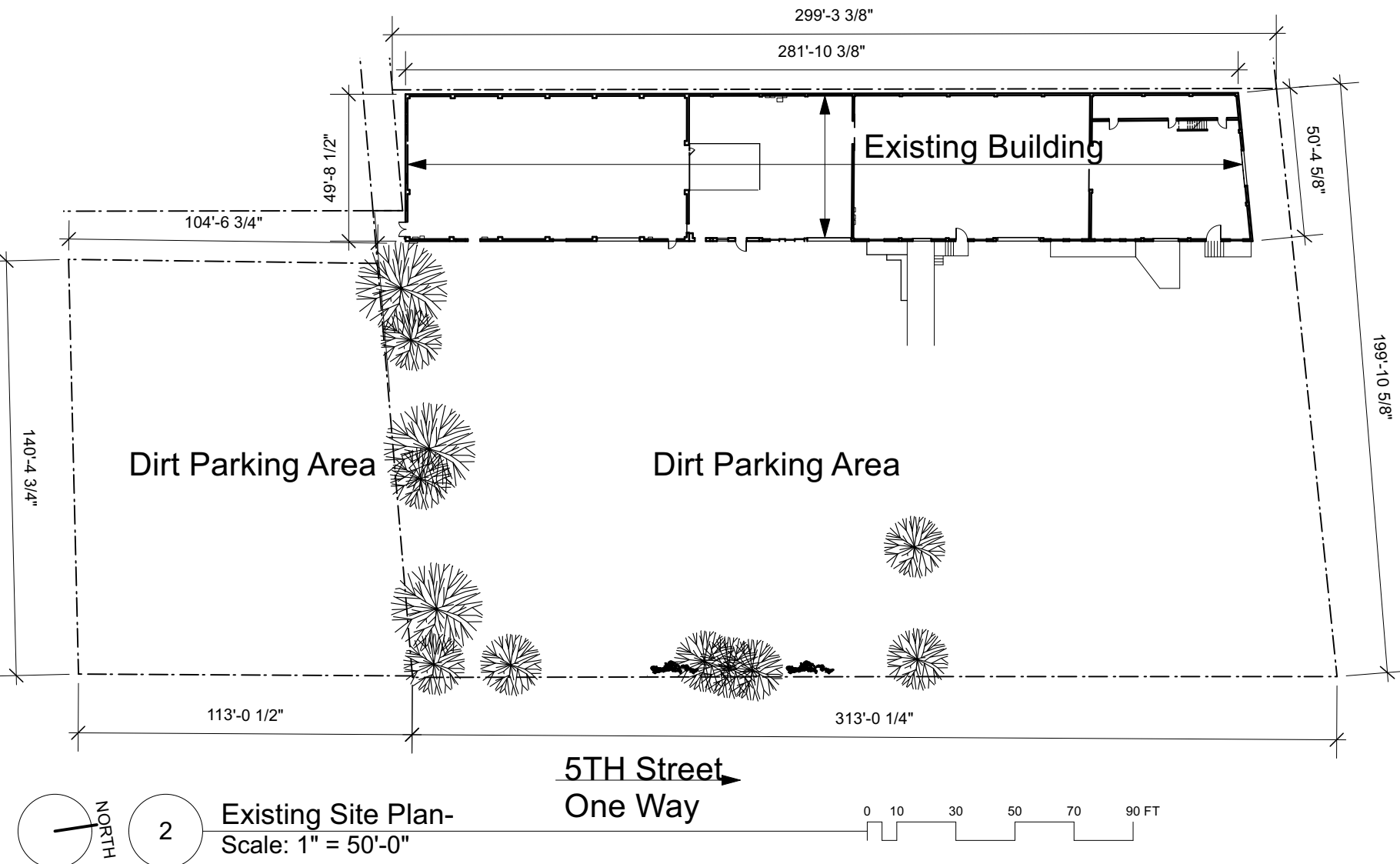
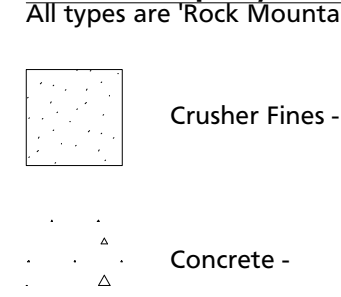
Site Area 1.41 Acres	61,473 sq.ft.
Building Footprint	16,168 sq.ft.
Parking Lot Area	19,894 sq.ft.
Sidewalk / Patio Area	9,447sq.ft.

Landscape Area Required per 5-6(C)(2)(B) DT-UC-M5-PT 10% of 45,305 sq.ft. = 4,305 sq.ft.
Landscape Area Provided: 15,964 sq.ft.

Plant Material



Hardscape / Groundcover Key



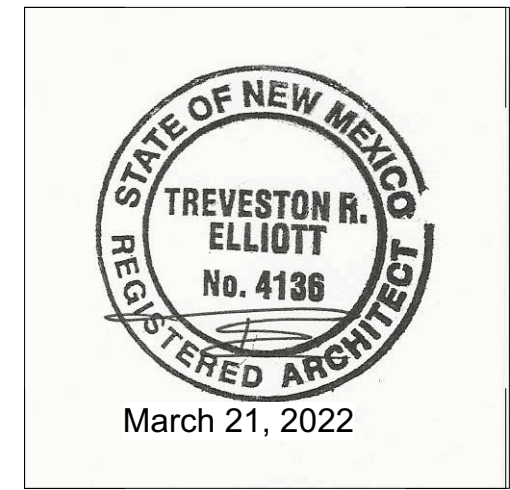
2 Existing Site Plan-
Scale: 1" = 50'-0"

TREVESTON ELLIOTT
ARCHITECT

811 12TH ST. NW
ALBUQUERQUE, NEW MEXICO
87102
C 505.259.4617
treveston@eartharchitect.com
www.eartharchitect.com

Heritage Driven

ALBUQUERQUE, NEW MEXICO 87102



Date: March 21 2022

Sheet:
Site Plan
General Info

A-081

Submission of this Notice of Intent (NOI) constitutes notice that the operator identified in Section III of this form requests authorization to discharge pursuant to the NPDES Construction General Permit (CGP) permit number identified in Section II of this form. Submission of this NOI also constitutes notice that the operator identified in Section III of this form meets the eligibility requirements of Part 1.1 CGP for the project identified in Section IV of this form. Permit coverage is required prior to commencement of construction activity until you are eligible to terminate coverage as detailed in Part 8 of the CGP. To obtain authorization, you must submit a complete and accurate NOI form. Discharges are not authorized if your NOI is incomplete or inaccurate or if you were never eligible for permit coverage. Refer to the instructions at the end of this form.

Permit Information

NPDES ID: NMR10045XState/Territory to which your project/site is discharging: NM

Is your project/site located on federally recognized Indian Country lands? No

Are you requesting coverage under this NOI as a "*Federal Operator*" or a "*Federal Facility*" as defined in Appendix A (<https://www.epa.gov/system/files/documents/2022-01/2022-cgp-final-appendix-a-definitions.pdf>)?

No

Have stormwater discharges from your current construction site been covered previously under an NPDES permit? No

Will you use polymers, flocculants, or other treatment chemicals at your construction site? No

Has a Stormwater Pollution Prevention Plan (SWPPP) been prepared in advance of filling this NOI, as required? Yes

Are you able to demonstrate that you meet one of the criteria listed in Appendix D (<https://www.epa.gov/system/files/documents/2022-01/2022-cgp-final-appendix-d-endangered-species-protection.pdf>) with respect to protection of threatened or endangered species listed under the Endangered Species Act (ESA) and federally designated critical habitat?

Yes

Have you completed the screening process in Appendix E (<https://www.epa.gov/system/files/documents/2022-01/2022-cgp-final-appendix-e-historic-properties.pdf>) relating to the protection of historic properties?

Yes

Indicating "Yes" below, I confirm that I understand that CGP only authorized the allowable stormwater discharges in Part 1.2.1 and the allowable non-stormwater discharges listed in Part 1.2.2. Any discharges not expressly authorized in this permit cannot become authorized or shielded from liability under CWA section 402(k) by disclosure to EPA, state or local authorities after issuance of this permit via any means, including the Notice of Intent (NOI) to be covered by the permit, the Stormwater Pollution Prevention Plan (SWPPP), during an Inspection, etc. If any discharges requiring NPDES permit coverage other than the allowable stormwater and non-stormwater discharges listed in Parts 1.2.1 and 1.2.2 will be discharged, they must be covered under another NPDES permit.

Yes

Operator Information

Operator Information

Operator Name: AGENDA REAL ESTATE HOLDINGS, LLC

Operator Mailing Address:

Address Line 1: 320 GOLD AVE. SE

Address Line 2:

City: ALBUQUERQUEZIP/Postal Code: 87104State: NMCounty or Similar Division: Bernalillo

Operator Point of Contact Information

First Name Middle Initial Last Name: CHRIS TAYLORTitle: coo

Phone: 505-450-4703

Ext.:

Email: CTAYLOR@AGENDA-GLOBAL.COM

NOI Preparer Information

☒ This NOI is being prepared by someone other than the certifier.First Name Middle Initial Last Name: Mathew F VallejosOrganization: Green Globe Environmental

Phone: (505) 304-8473

Ext.:

Email: matt@greenglobenm.com

Project/Site Information

Project/Site Name: AGENDA GLOBAL 5TH ST. WAREHOUSE REMODEL

Project/Site Address

Address Line 1: 1715 5TH ST. NW

Address Line 2:

City: ALBUQUERQUEZIP/Postal Code: 87102State: NM

County or Similar Division: Bernalillo

Latitude/Longitude: 35.101934°N, 106.650155°W

Latitude/Longitude Data Source: Map

Horizontal Reference Datum: WGS 84

Project Start Date: 09/01/2021

Project End Date: 09/01/2022

Estimated Area to be Disturbed: 2

Types of Construction Sites:

- Commercial

Will there be demolition of any structure built or renovated before January 1, 1980? No

Will you be discharging dewatering water from your site? No

Was the pre-development land use used for agriculture? No

Are there other operators that are covered under this permit for the same project site? Yes

🔗 NPDES permits

NPDES Permit Number

NMR10045V

Have earth-disturbing activities commenced on your project/site? No

Is your project/site located on federally recognized Indian Country lands? No

Is your project/site located on a property of religious or cultural significance to an Indian tribe? No

Discharge Information

Does your project/site discharge stormwater into a Municipal Separate Storm Sewer System (MS4)? Yes

Are there any waters of the U.S. within 50 feet of your project's earth disturbances? No

Are any of the waters of the U.S. to which you discharge designated by the state or tribal authority under its antidegradation policy as a Tier 2 (or Tier 2.5) water (water quality exceeds levels necessary to support propagation of fish, shellfish, and wildlife and recreation in and on the water) or as a Tier 3 water (Outstanding National Resource Water)? See Resources, Tools and Templates (<https://www.epa.gov/npdes/construction-general-permit-resources-tools-and-templates>)

Yes

001: Rio Grande (Tijeras Arroyo to Alameda Bridge)

Latitude/Longitude: 35.089434°N, 106.681322°W

Tier Designation: Tier 2

Is this receiving water impaired (on the CWA 303(d) list)? Yes

Impaired Pollutants:

- Temperature
- Dissolved oxygen
- E. coli

Has a TMDL been completed for this receiving waterbody? Yes

TMDL ID: NM2105 Name: RIO GRANDE (TIJERAS ARROYO TO ALAMEDA BRIDGE)

TMDL Pollutants:

- E. coli

Stormwater Pollution Prevention Plan (SWPPP)

Will all required personnel, including those conducting inspections at your site, meet the training requirements in Part 6 of this permit? Yes

First Name Middle Initial Last Name: CHRIS TAYLOR

Organization:

Title: COO

Phone: 505-450-4703

Ext.:

Email: CTAYLOR@AGENDA-GLOBAL.COM

Endangered Species Protection Worksheet: Criterion A

Determine ESA Eligibility Criterion

Are your discharges and discharge-related activities already addressed in another operator's valid certification of eligibility for your "action area" under the current 2022 CGP? [No](#)

Has consultation between you, a Federal Agency, and the USFWS and/or the NMFS under section 7 of the Endangered Species Act (ESA) concluded? [Yes](#)

Are your construction activities the subject of a permit under section 10 of the ESA by the USFWS and/or NMFS, and this authorization addresses the effects of your site's discharges and discharge-related activities on ESA-listed species and/or designated critical habitat?

[No](#)

You must determine whether species listed as either threatened or endangered, or their critical habitat(s) are located in your site's action area (i.e., all areas to be affected directly or indirectly by the federal action and not merely the immediate area involved in the action, including areas beyond the footprint of the site that are likely to be affected by stormwater discharges, discharge-related activities, and authorized non-stormwater discharges).

Determine your Action Area

You must consider the following in determining the action area for your site, and confirm that all the following are true:

- ✎ In determining my "action area", I have considered that discharges of pollutants into downstream areas can expand the action area well beyond the footprint of my site and the discharge point(s). I have taken into account the controls I will be implementing to minimize pollutants and the receiving waterbody characteristics (e.g., perennial, intermittent, ephemeral) in determining the extent of physical, chemical, and/or biotic effects of the discharges. I confirm that all receiving waterbodies that could receive pollutants from my site are included in my action area.

[True](#)

- ✎ In determining my "action area", I have considered that discharge-related activities must also be accounted for in determining my action area. I understand that discharge-related activities are any activities that cause, contribute to, or result in stormwater and authorized non-stormwater point source discharges, and measures such as the siting, construction timing, and operation of stormwater controls to control, reduce, or prevent pollutants from being discharged. I understand that any new or modified stormwater controls that will have noise or other similar effects, and any disturbances associated with construction of controls, are part of my action area.

[True](#)

Determine if ESA-listed species and/or critical habitat are in your site action area.

ESA-listed species and designated critical habitat are under the purview of the NMFS and the USFWS, and in many cases, you will need to acquire species and critical habitat lists from both federal agencies.

National Marine Fisheries Service (NMFS)

For NMFS species and designated critical habitat information, use the following webpage:

- <https://www.epa.gov/npdes/construction-general-permit-cgp-threatened-and-endangered-species-eligibility> (<https://www.epa.gov/npdes/construction-general-permit-cgp-threatened-and-endangered-species-eligibility>)

I have checked the webpage listed above and confirmed that:

- ☒ There are no NMFS-protected species and/or designated critical habitat in my action area.
- ☐ There are NMFS-protected species and/or designated critical habitat in my action area.

U.S. Fish and Wildlife Service (USFWS)

For USFWS species and critical habitat information, use the following webpage:

- <https://www.epa.gov/npdes/construction-general-permit-cgp-threatened-and-endangered-species-eligibility> (<https://www.epa.gov/npdes/construction-general-permit-cgp-threatened-and-endangered-species-eligibility>)

I have checked the webpage listed above and confirmed that:

- ☒ There are no FWS-protected species and/or designated critical habitat in my action area.
- ☐ There are FWS-protected species and/or designated critical habitat in my action area.

You are eligible under **Criterion A**.

Identify the USFWS information sources used (Note: state resources are not acceptable):

USFWS IPAC, PROJECT CODE: 02ENNM00-2021-SLI-1534

Identify the NMFS information sources used (Note: state resources are not acceptable):

USFWS IPAC, PROJECT CODE: 02ENNM00-2021-SLI-1534

You must attach: **0**

- Aerial image(s) of the site.
- A printout of the species' list(s) showing no ESA-listed species or designated critical habitat in my action area.

Name	Uploaded Date	Size
 Species List_ New Mexico Ecological Services Field Office.pdf (attachment/1487665)	03/23/2022	808.53 KB
 AGENDA GLOBAL 5TH ST. WARHOUSE - VICINITY MAP.pdf (attachment/1487664)	03/23/2022	16.11 MB

Have you attached aerial image(s) of the site? [Yes](#)

Have you attached a printout of the species' list(s) showing no ESA-listed species or designated critical habitat in my action area? [Yes](#)

Have you provided documentation in your SWPPP supporting your eligibility under Criterion A? [Yes](#)



Are you installing any stormwater controls as described in Appendix E (<https://www.epa.gov/system/files/documents/2022-01/2022-cgp-final-appendix-e-historic-properties.pdf>) that require subsurface earth disturbances? (Appendix E (<https://www.epa.gov/system/files/documents/2022-01/2022-cgp-final-appendix-e-historic-properties.pdf>), Step 1)

Yes

- Have prior surveys or evaluations conducted on the site already determined historic properties do not exist, or that prior disturbances have precluded the existence of historic properties? (Appendix E (<https://www.epa.gov/system/files/documents/2022-01/2022-cgp-final-appendix-e-historic-properties.pdf>), Step 2):

Yes

Certification Information



I certify under penalty of law that this document and all attachments were prepared under my direction or supervision in accordance with a system designed to assure that qualified personnel properly gathered and evaluated the information submitted. Based on my inquiry of the person or persons who manage the system, or those persons directly responsible for gathering the information, the information submitted is, to the best of my knowledge and belief, true, accurate, and complete. I have no personal knowledge that the information submitted is other than true, accurate, and complete. I am aware that there are significant penalties for submitting false information, including the possibility of fine and imprisonment for knowing violations. Signing an electronic document on behalf of another person is subject to criminal, civil, administrative, or other lawful action.

Certified By: Chris Taylor

Certifier Title: Partner

Certifier Email: chris@cltaylor.com

Certified On: 03/23/2022 12:38 PM ET