



# FIRE 1 PERMIT

ALBUQUERQUE FIRE MARSHAL'S  
OFFICE PLANS CHECK DIVISION

PERMIT NUMBER: 21-004994

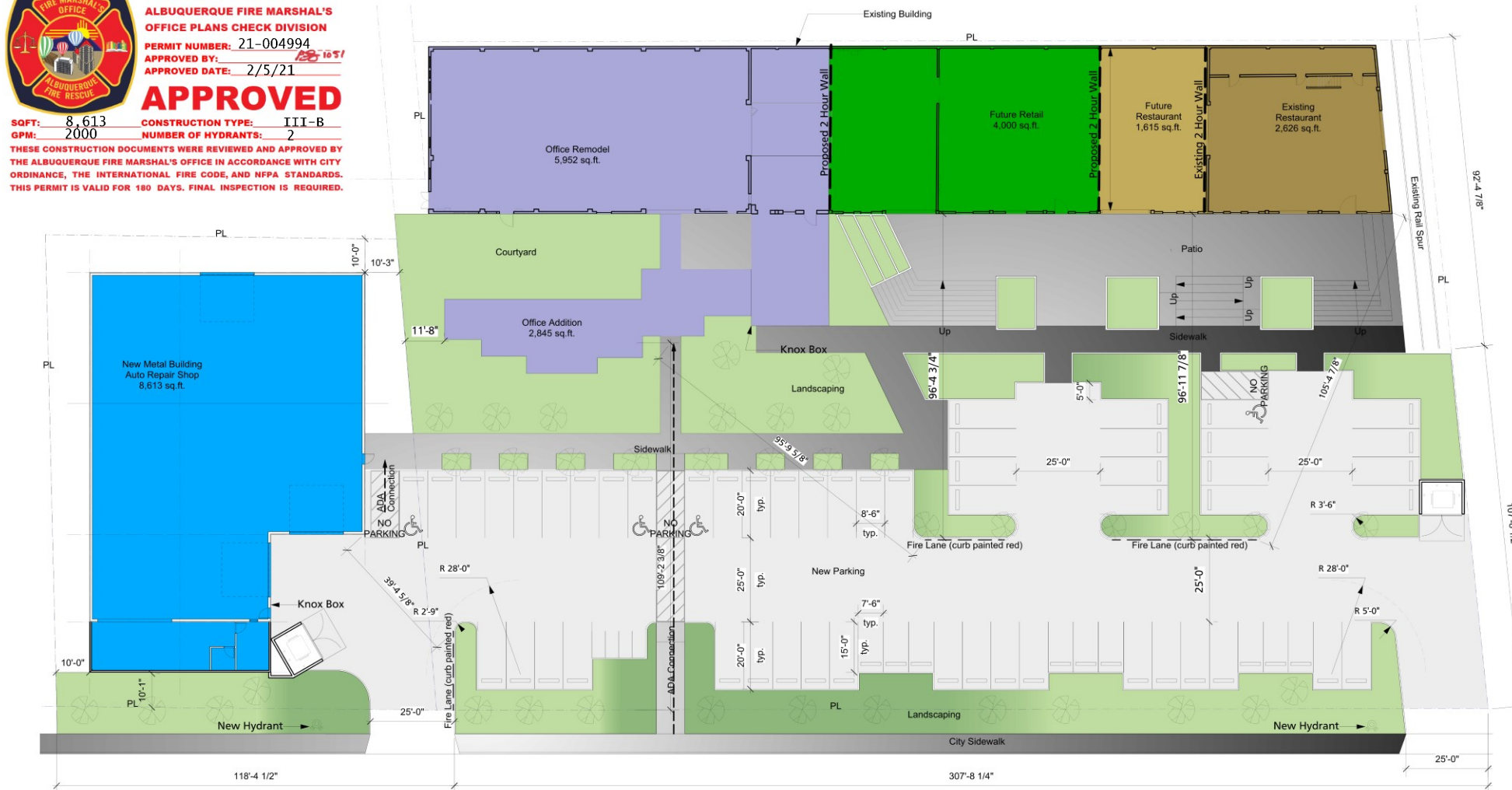
APPROVED BY: [Signature]

APPROVED DATE: 2/5/21

## APPROVED

SQFT: 8,613 CONSTRUCTION TYPE: III-B  
GPM: 2000 NUMBER OF HYDRANTS: 2

THESE CONSTRUCTION DOCUMENTS WERE REVIEWED AND APPROVED BY THE ALBUQUERQUE FIRE MARSHAL'S OFFICE IN ACCORDANCE WITH CITY ORDINANCE, THE INTERNATIONAL FIRE CODE, AND NFPA STANDARDS. THIS PERMIT IS VALID FOR 180 DAYS. FINAL INSPECTION IS REQUIRED.



1 Site Plan-  
Scale: 1" = 20'-0"

### Sprinkler System:

- Shop drawings will be submitted to the fire marshal's office for review and approval of any installation or modification to fire sprinkler system, fire alarm system, kitchen suppression system, or any other fire related system.
- The fire sprinkler system will be supervised when required by the 2015 International fire code.

Parking and drive aisle for fire apparatus access roads shall have an asphalt, concrete, or other approved driving surface capable of supporting the imposed load of fire apparatus weighing at least 75,000 pounds. Contractor to provide engineer data for approval.

All drive aisle curbs to be painted red and marked 'no parking fire lane'.

### Fire Flow Requirements

#### Construction Type Vb

Office B	NS Type Vb Allowable area 9,000 sq.ft.
Resturant A-2	NS Type Vb Allowable area 6,000 sq.ft.
Retail M	NS Type Vb Allowable area 9,000 sq.ft.
Factory F-1	NS Type III Allowable area 12,000sq.ft.

#### AREA PER OCCUPANCY:

B=	8,635 sq.ft. Fire Flow = 2,500 GPM - 2 Hr.
A-2=	4,241 sq.ft. Fire Flow = 2,000 GPM - 2 Hr.
M=	4,000 sq.ft. Fire Flow = 1,750 GPM - 2 Hr.
F-1=	8,613 sq.ft. Fire Flow = 2,500 GPM - 2 Hr.

#### 2 Hydrants

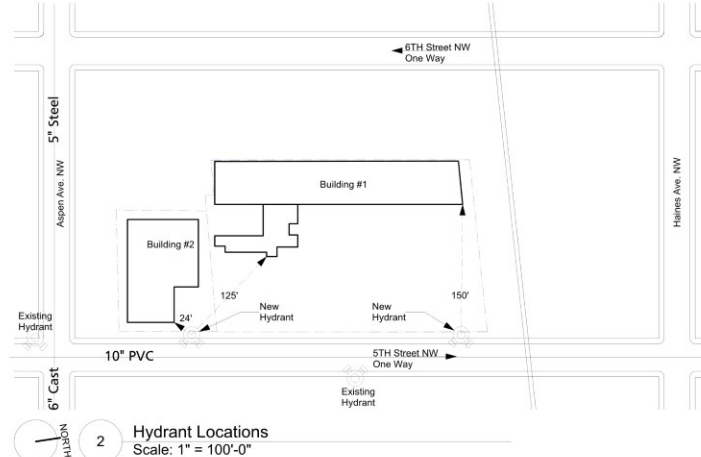
- 1 Hydrant Existing approx. 277' from building #1
- 1 Hydrant Existing approx 233' from building #2

#### Single story

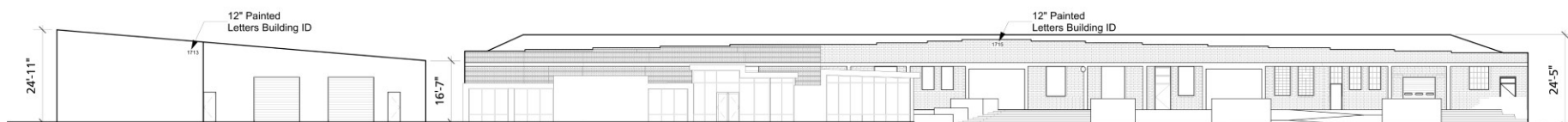
KNOX Box One per building see plan for location.

No PIV

No FDC



2 Hydrant Locations  
Scale: 1" = 100'-0"



2 East Elevation  
Scale: 1" = 20'-0"

CODE DATA  
2015 International Building Code  
2015 Uniform Plumbing Code  
2015 Uniform Mechanical Code  
2017 National Electrical Code  
2009 International Energy Conservation Code

City of Albuquerque  
Location: 1715 5th St  
Albuquerque, New Mexico 87102

Zoning: NR-LM

Parking:	UC-MS-PT Corridor		
	2.5/1,000 GSF (Office)	9,608	=24
	2.5/1,000 GSF (Retail)	3,677	=9.2
	5/1,000 GSF (Restaurant)	4,238	=21.2
	0 GSF (Outdoor seating)		
	1/1,000 GSF (Light Vehicle Repair)	8,613	=8.6

Total Spaces required before reduction	= 63
ADA	= 3 (1 Van)
Motorcycle	= 3

#### Shared Parking Reduction TABLE 5-5-3

Office to Food / 1.7

$$(24 + 21.2) / 1.7 = 26.6 + 9.2(Retail) + 8.6(LVR) = 44$$

On street parking credit

$$= -6$$

Total Spaces Required

$$= 38$$

Total Spaces Provided

$$= 61$$

(note: shared parking access aggrement will be provided)

#### Occupancy:

2Hour Separation Wall Required between B and A-2	
2Hour Separation Wall Required between M and A-2	
2Hour Separation Wall Required between M and B	
Office B	NS Type Vb Allowable area 9,000 sq.ft.
Resturant A-2	NS Type Vb Allowable area 6,000 sq.ft.
Retail M	NS Type Vb Allowable area 9,000 sq.ft.

Factory F-1	NS Type III Allowable area 12,000sq.ft.
-------------	---

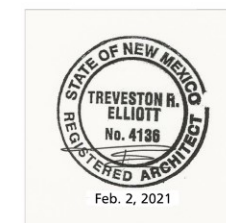
Agenda Office:	8,635 sq.ft.
Future Retail:	4,000 sq.ft.
Future Restaurant:	1,615 sq.ft.
Existing Restaurant:	2,626 sq.ft.
Light Vehicle Repair:	9,170 sq.ft.

TREVESTON ELLIOTT  
ARCHITECT

811 12TH ST. NW  
ALBUQUERQUE, NEW MEXICO  
87102  
C 505.259.4617  
treveston@earthlink.net  
www.earthlink.net

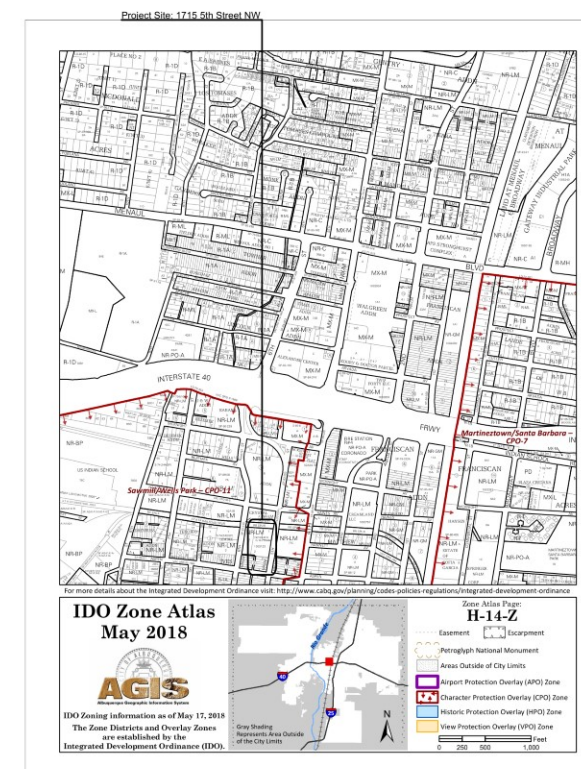
1715 5TH STREET

ALBUQUERQUE, NEW MEXICO 87102



Date: Feb. 2, 2021

Sheet: FIRE-1



# FIRE-1