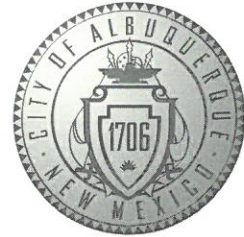


CITY OF ALBUQUERQUE



April 4, 2019

Miller Engineering Consultants Inc.
Verlyn Miller
3500 Comanche Rd. NE
Albuquerque, NM 87107

**Re: Gordon Bernel Charter School,
2821 4th st. NW Albuquerque Nm 87107
Request for Certificate of Occupancy
Transportation Development Final Inspection
Engineer's/Architect's Stamp dated 07-26-2018 (H14D107)
Certification dated 04-02-2019**

Dear Mr. Pacheco,

Based upon the information provided in your submittal received 04-03-2019, Transportation Development has no objection to the issuance of a Permanent Certificate of Occupancy. This letter serves as a "green tag" from Transportation Development for a Permanent Certificate of Occupancy to be issued by the Building and Safety Division.

If you have any questions, please contact me at (505)924-3675.

Sincerely,

Mojgan Maadandar, E.I.
Associate Engineer, Planning Dept.
Development Review Services

\MM via: email
C: CO Clerk, File



City of Albuquerque

Planning Department
Development & Building Services Division

DRAINAGE AND TRANSPORTATION INFORMATION SHEET (REV 6/2018)

Project Title: Gordon Bernell Charter School Building Permit #: BP-2018-27106 Hydrology File #: H14D107

DRB#: _____ EPC#: _____ Work Order#: _____

Legal Description: TR A1 & A@ of White City Glenhaven Addition

City Address: 2821 4th St. NW Albuquerque, NM 87107

Applicant: Rachel Matthew Development Contact: Steve Hernandez

Address: 9320 Menaul Blvd. NE Ste. D, Albuquerque, NM 87112

Phone#: 505-228-1401 Fax#: _____ E-mail: steve@dmcnm.com

Other Contact: _____ Contact: _____

Address: _____

Phone#: _____ Fax#: _____ E-mail: _____

TYPE OF DEVELOPMENT: _____ PLAT (# of lots) _____ RESIDENCE _____ DRB SITE _____ ADMIN SITE

IS THIS A RESUBMITTAL? _____ Yes ☒ No

DEPARTMENT ☒ TRANSPORTATION _____ HYDROLOGY/DRAINAGE

Check all that Apply:

TYPE OF SUBMITTAL:

- ☐ ENGINEER/ARCHITECT CERTIFICATION
- ☐ PAD CERTIFICATION
- ☐ CONCEPTUAL G & D PLAN
- ☐ GRADING PLAN
- ☐ DRAINAGE REPORT
- ☐ DRAINAGE MASTER PLAN
- ☐ FLOODPLAIN DEVELOPMENT PERMIT APPLIC
- ☐ ELEVATION CERTIFICATE
- ☐ CLOMR/LOMR
- ☒ TRAFFIC CIRCULATION LAYOUT (TCL)
- ☐ TRAFFIC IMPACT STUDY (TIS)
- ☐ STREET LIGHT LAYOUT
- ☐ OTHER (SPECIFY) _____
- ☐ PRE-DESIGN MEETING?

TYPE OF APPROVAL/ACCEPTANCE SOUGHT:

- ☐ BUILDING PERMIT APPROVAL
- ☒ CERTIFICATE OF OCCUPANCY
- ☐ PRELIMINARY PLAT APPROVAL
- ☐ SITE PLAN FOR SUB'D APPROVAL
- ☐ SITE PLAN FOR BLDG. PERMIT APPROVAL
- ☐ FINAL PLAT APPROVAL
- ☐ SIA/ RELEASE OF FINANCIAL GUARANTEE
- ☐ FOUNDATION PERMIT APPROVAL
- ☐ GRADING PERMIT APPROVAL
- ☐ SO-19 APPROVAL
- ☐ PAVING PERMIT APPROVAL
- ☐ GRADING/ PAD CERTIFICATION
- ☐ WORK ORDER APPROVAL
- ☐ CLOMR/LOMR
- ☐ FLOODPLAIN DEVELOPMENT PERMIT
- ☐ OTHER (SPECIFY) _____

DATE SUBMITTED: 4-2-19 By: Steven W. Hernandez

COA STAFF:

ELECTRONIC SUBMITTAL RECEIVED: _____

FEE PAID: _____

TCL CERTIFICATION

I, David J. Pacheco, New Mexico Registered Architect #: 1606, of the firm David J. Pacheco Architect, hereby certify that this project is in substantial compliance with and in accordance with the design intent of the TCL approved plan dated Sept. 5, 2018. The record information edited onto the original design document has been obtained by David Pacheco of the firm David J. Pacheco. I further certify that I have personally visited the project site on 04-01-2019 and have determined by visual inspection that the survey data provided is representative of actual site ASBUILT conditions and is true and correct to the best of my knowledge and belief. This certification is submitted in support of a request for Approval and for CO.

(Describe any exceptions and/or qualifications here in a separate paragraph.)

(Describe any deficiencies and/or required corrections here in a separate paragraph.)

The record information presented hereon is not necessarily complete and intended only to verify substantial compliance of the traffic aspects of this project. Those relying on the record document are advised to obtain independent verification of its accuracy before using it for any other purpose.

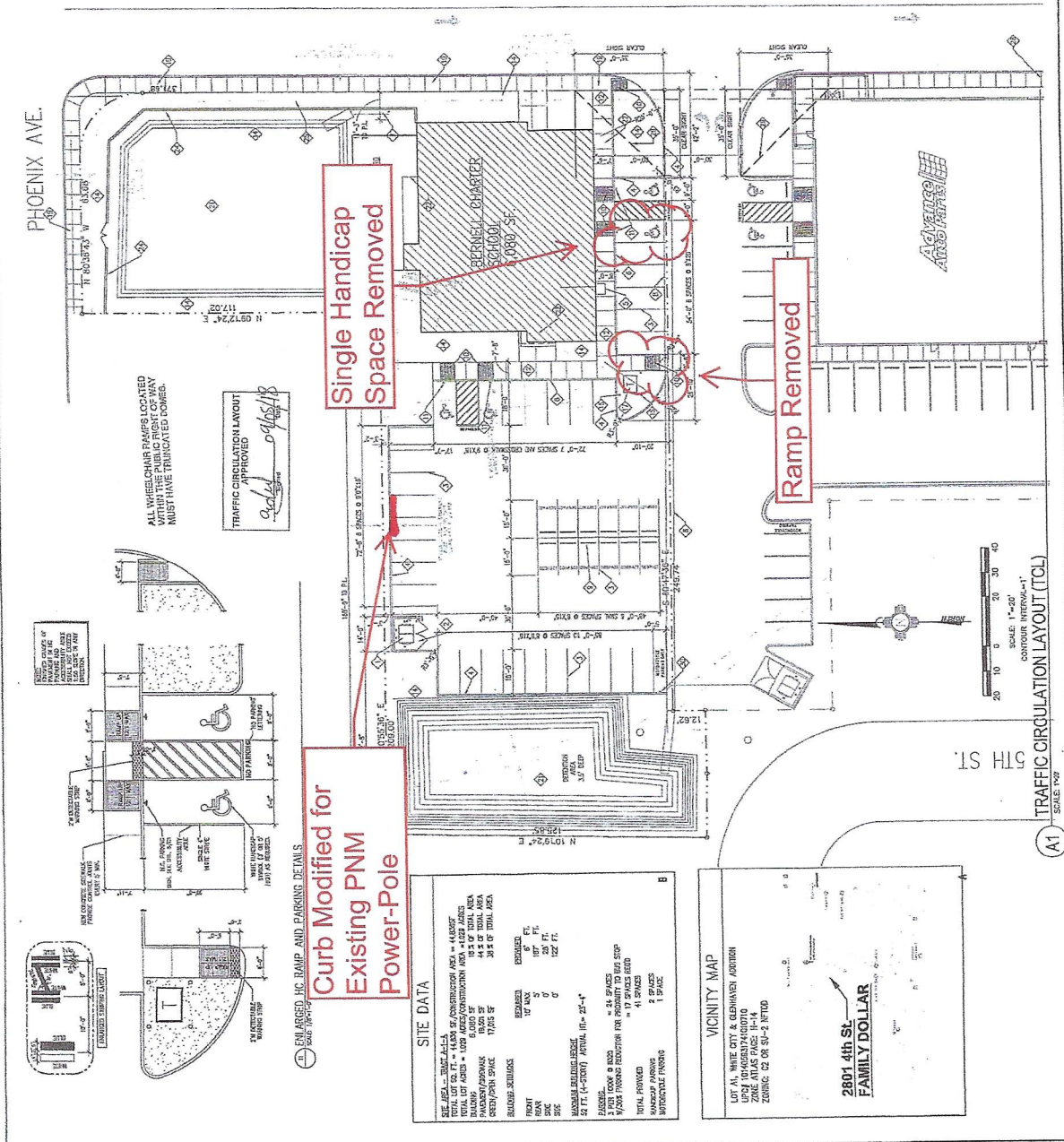
David J. Pacheco

April 2, 2019

Date





April 2, 2049



ING CONSULTANTS
Engineers • Planners

07-07-2018	07-07-2018	07-07-2018
------------	------------	------------



UNOXY TOO
TOO

TER SCH
NEW MEXICO
TER SCH
ATION LA
N

T. CHART
ALBUQUERQUE, N.M.
T. CHART
CIRCULAR
PLAIN

BERNET
TRAFFIC
BERNET

L	

Description

1. **Introduction**
 2. **Background**
 3. **Methodology**
 4. **Results**
 5. **Conclusion**
 6. **References**
 7. **Appendix**
 8. **Index**
 9. **Table of Contents**
 10. **Figure 1**
 11. **Figure 2**
 12. **Figure 3**
 13. **Figure 4**
 14. **Figure 5**
 15. **Figure 6**
 16. **Figure 7**
 17. **Figure 8**
 18. **Figure 9**
 19. **Figure 10**
 20. **Figure 11**
 21. **Figure 12**
 22. **Figure 13**
 23. **Figure 14**
 24. **Figure 15**
 25. **Figure 16**
 26. **Figure 17**
 27. **Figure 18**
 28. **Figure 19**
 29. **Figure 20**
 30. **Figure 21**
 31. **Figure 22**
 32. **Figure 23**
 33. **Figure 24**
 34. **Figure 25**
 35. **Figure 26**
 36. **Figure 27**
 37. **Figure 28**
 38. **Figure 29**
 39. **Figure 30**
 40. **Figure 31**
 41. **Figure 32**
 42. **Figure 33**
 43. **Figure 34**
 44. **Figure 35**
 45. **Figure 36**
 46. **Figure 37**
 47. **Figure 38**
 48. **Figure 39**
 49. **Figure 40**
 50. **Figure 41**
 51. **Figure 42**
 52. **Figure 43**
 53. **Figure 44**
 54. **Figure 45**
 55. **Figure 46**
 56. **Figure 47**
 57. **Figure 48**
 58. **Figure 49**
 59. **Figure 50**
 60. **Figure 51**
 61. **Figure 52**
 62. **Figure 53**
 63. **Figure 54**
 64. **Figure 55**
 65. **Figure 56**
 66. **Figure 57**
 67. **Figure 58**
 68. **Figure 59**
 69. **Figure 60**
 70. **Figure 61**
 71. **Figure 62**
 72. **Figure 63**
 73. **Figure 64**
 74. **Figure 65**
 75. **Figure 66**
 76. **Figure 67**
 77. **Figure 68**
 78. **Figure 69**
 79. **Figure 70**
 80. **Figure 71**
 81. **Figure 72**
 82. **Figure 73**
 83. **Figure 74**
 84. **Figure 75**
 85. **Figure 76**
 86. **Figure 77**
 87. **Figure 78**
 88. **Figure 79**
 89. **Figure 80**
 90. **Figure 81**
 91. **Figure 82**
 92. **Figure 83**
 93. **Figure 84**
 94. **Figure 85**
 95. **Figure 86**
 96. **Figure 87**
 97. **Figure 88**
 98. **Figure 89**
 99. **Figure 90**
 100. **Figure 91**
 101. **Figure 92**
 102. **Figure 93**
 103. **Figure 94**
 104. **Figure 95**
 105. **Figure 96**
 106. **Figure 97**
 107. **Figure 98**
 108. **Figure 99**
 109. **Figure 100**
 110. **Figure 101**
 111. **Figure 102**
 112. **Figure 103**
 113. **Figure 104**
 114. **Figure 105**
 115. **Figure 106**
 116. **Figure 107**
 117. **Figure 108**
 118. **Figure 109**
 119. **Figure 110**
 120. **Figure 111**
 121. **Figure 112**
 122. **Figure 113**
 123. **Figure 114**
 124. **Figure 115**
 125. **Figure 116**
 126. **Figure 117**
 127. **Figure 118**
 128. **Figure 119**
 129. **Figure 120**
 130. **Figure 121**
 131. **Figure 122**
 132. **Figure 123**
 133. **Figure 124**
 134. **Figure 125**
 135. **Figure 126**
 136. **Figure 127**
 137. **Figure 128**
 138. **Figure 129**
 139. **Figure 130**
 140. **Figure 131**
 141. **Figure 132**
 142. **Figure 133**
 143. **Figure 134**
 144. **Figure 135**
 145. **Figure 136**
 146. **Figure 137**
 147. **Figure 138**
 148. **Figure 139**
 149. **Figure 140**
 150. **Figure 141**
 151. **Figure 142**
 152. **Figure 143**
 153. **Figure 144**
 154. **Figure 145**
 155. **Figure 146**
 156. **Figure 147**
 157. **Figure 148**
 158. **Figure 149**
 159. **Figure 150**
 160. **Figure 151**
 161. **Figure 152**
 162. **Figure 153**
 163. **Figure 154**
 164. **Figure 155**
 165. **Figure 156**
 166. **Figure 157**
 167. **Figure 158**
 168. **Figure 159**
 169. **Figure 160**
 170. **Figure 161**
 171. **Figure 162**
 172. **Figure 163**
 173. **Figure 164**
 174. **Figure 165**
 175. **Figure 166**
 176. **Figure 167**
 177. **Figure 168**
 178. **Figure 169**
 179. **Figure 170**
 180. **Figure 171**
 181. **Figure 172**
 182. **Figure 173**
 183. **Figure 174**
 184. **Figure 175**
 185. **Figure 176**
 186. **Figure 177**
 187. **Figure 178**
 188. **Figure 179**
 189. **Figure 180**
 190. **Figure 181**
 191. **Figure 182**
 192. **Figure 183**
 193. **Figure 184**
 194. **Figure 185**
 195. **Figure 186**
 196. **Figure 187**
 197. **Figure 188**
 198. **Figure 189**
 199. **Figure 190**
 200. **Figure 191**
 201. **Figure 192**
 202. **Figure 193**
 203. **Figure 194**
 204. **Figure 195**
 205. **Figure 196**
 206. **Figure 197**
 207. **Figure 198**
 208. **Figure 199**
 209. **Figure 200**
 210. **Figure 201**
 211. **Figure 202**
 212. **Figure 203**
 213. **Figure 204**
 214. **Figure 205**
 215. **Figure 206**
 216. **Figure 207**
 217. **Figure 208**

Date	

	C-103
Work	

1141

CITY OF ALBUQUERQUE



September 5, 2018

Miller Engineering Consultants Inc.
Verlyn Miller
3500 Comanche Rd. NE
Albuquerque, NM 87107

Re: Bernell Charter School
2821 Abq, NM 87107
Traffic Circulation Layout
Engineer's/Architect's Stamp 07/26/18 (H14-D107)

Dear Mr. Pacheco,

The TCL submittal received 08-29-18 is approved for Building Permit. A copy of the stamped and signed plan will be needed for each of the building permit plans. Please keep the original to be used for certification of the site for final C.O. for Transportation.



When the site construction is completed and a Certificate of Occupancy (C.O.) is requested, use the original City stamped approved TCL for certification. Redline any minor changes and adjustments that were made in the field. A NM registered architect or engineer must stamp, sign, and date the certification TCL along with indicating that the development was built in "substantial compliance" with the TCL. Submit this certification TCL with a completed Drainage and Transportation Information Sheet to front counter personnel for log in and evaluation by Transportation.

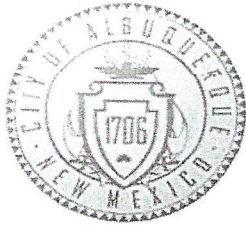
Once verification of certification is completed and approved, notification will be made to Building Safety to issue Final C.O. To confirm that a final C.O. has been issued, call Building Safety at 924-3690.

Sincerely,

Mojgan Maadandar
Associate Engineer, Planning Dept.
Development Review Services

MM via: email
C: File

	 MILLER ENGINEERING CONSULTANTS <i>Engineers • Planners</i>		3500 COMANCHE NE BLDG F 4100 ERMINE, NM 87107 (505)888-7500 (505)888-3800 (FAX)			
				Designed	Jab	E-18-026
				Drawn	Alie	XIPOD.DWG
				Checked	WAM	Date 07-03-2018



City of Albuquerque

Planning Department

Development & Building Services Division

DRAINAGE AND TRANSPORTATION INFORMATION SHEET (REV 09/2015)

Project Title: GORDAN BERNELL CHARTER SCHOOL Building Permit #: _____ City Drainage #: 4140107
 DRB#: _____ EPC#: _____ Work Order#: _____
 Legal Description: TR A1 & A2 OF WHITE CTY. GLEN HAVEN ADDITION
 City Address: 2821 4TH ST., ALBUQUERQUE, NM 87107
 Engineering Firm: MILLER ENGINEERING CONSULTANTS, INC Contact: VERLYN MILLER
 Address: 3500 COMANCHE RD. NE, ALBUQUERQUE, NM 87107
 Phone#: 505-888-7500 Fax#: 505-888-3800 E-mail: VMILLER@MECNM.COM
 Owner: RACHEL MATTHEW DEVELOPMENT Contact: STEVE NAKAMURA
 Address: 4500 SUNDT RD NE, RIO RANCHO, NM 87124
 Phone#: 505-792-4663 Fax#: 505-896-4664 E-mail: STEVE@RACHELMATTHEW.COM
 Architect: DAVID J. PACHECO ARCHITECT Contact: DAVID PACHECO
 Address: 6721 MARIPOSA PL. NW, ALBUQUERQUE, NM 87120
 Phone#: 505-899-1920 Fax#: CELL-505-239-9595 E-mail: DJPALBUQ.COM
 Other Contact: _____ Contact: _____
 Address: _____
 Phone#: _____ Fax#: _____ E-mail: _____

Check all that Apply:

DEPARTMENT:

☐ HYDROLOGY/ DRAINAGE
☒ TRAFFIC/ TRANSPORTATION
☐ MS4/ EROSION & SEDIMENT CONTROL

CHECK TYPE OF APPROVAL/ACCEPTANCE SOUGHT:

☒ BUILDING PERMIT APPROVAL
☐ CERTIFICATE OF OCCUPANCY

TYPE OF SUBMITTAL:

☐ ENGINEER/ ARCHITECT CERTIFICATION

☐ CONCEPTUAL G & D PLAN
☐ GRADING PLAN
☐ DRAINAGE MASTER PLAN
☐ DRAINAGE REPORT
☐ CLOMR/LOMR

☒ TRAFFIC CIRCULATION LAYOUT (TCL)
☐ TRAFFIC IMPACT STUDY (TIS)
☐ EROSION & SEDIMENT CONTROL PLAN (ESC)

☐ OTHER (SPECIFY) _____

☐ PRELIMINARY PLAT APPROVAL
☐ SITE PLAN FOR SUB'D APPROVAL
☐ SITE PLAN FOR BLDG. PERMIT APPROVAL
☐ FINAL PLAT APPROVAL
☐ SIA/ RELEASE OF FINANCIAL GUARANTEE
☐ FOUNDATION PERMIT APPROVAL
☐ GRADING PERMIT APPROVAL
☐ SO-19 APPROVAL
☐ PAVING PERMIT APPROVAL
☐ GRADING/ PAD CERTIFICATION
☐ WORK ORDER APPROVAL
☐ CLOMR/LOMR

☐ PRE-DESIGN MEETING
☐ OTHER (SPECIFY) _____

IS THIS A RESUBMITTAL? ☒ Yes ☐ No

DATE SUBMITTED: 8-29-2018 By: Dim Yoon for John Laguer

COA STAFF: _____ ELECTRONIC SUBMITTAL RECEIVED: _____

