

CITY OF ALBUQUERQUE

Planning Department
Alan Varela, Director



Mayor Timothy

M. Keller

April 10, 2024

Rahul Modi - saiincl@yahoo.com – (505) 803-6544

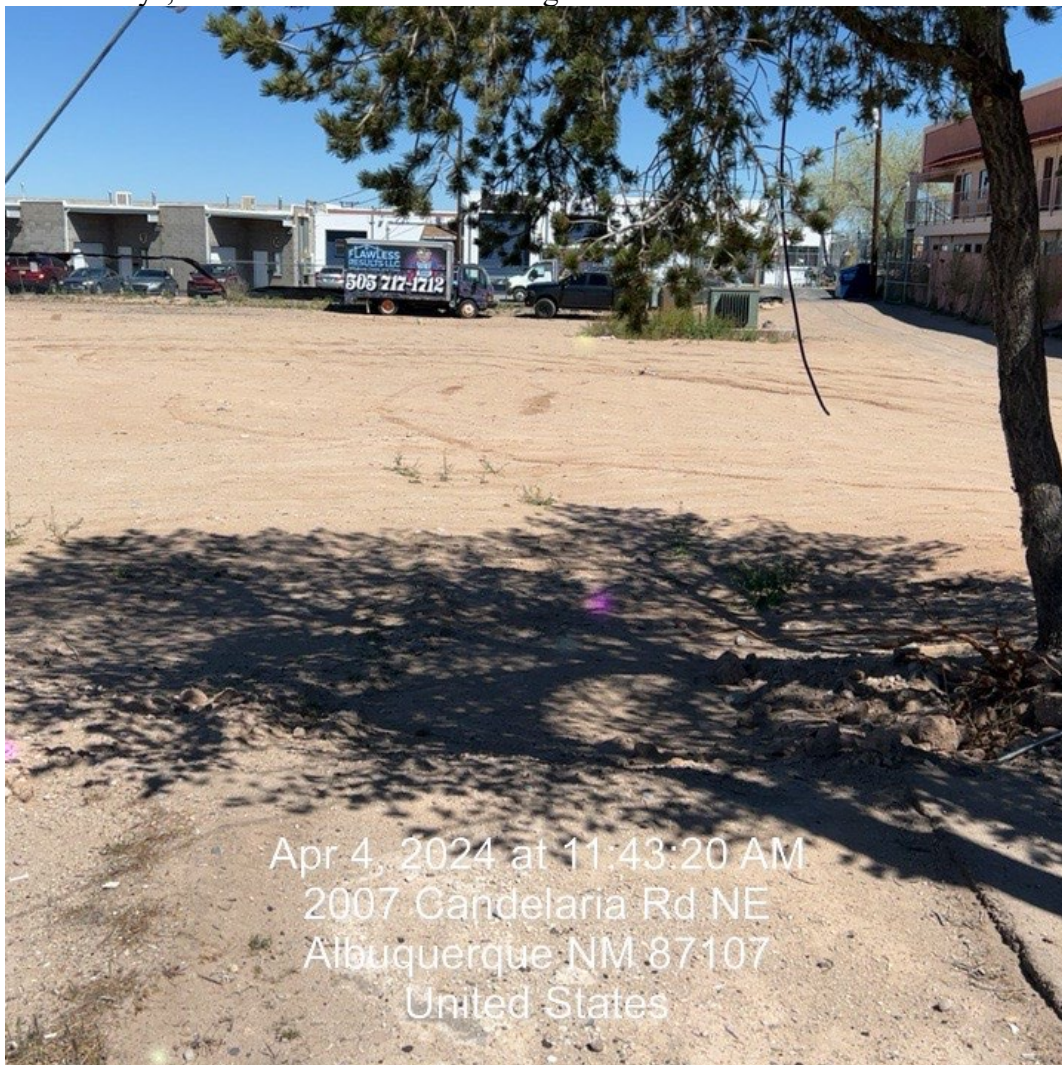
Galles Chevrolet, Inc., Jamie Galles - jamiegalles@galles.com – (505) 506-9531

Sites: Galles Chevrolet Parking Lot at 2001 Candelaria Rd. NE (H15E007)

Re: Drainage Ordinance (14-5-2-11) Violations for Erosion and Sediment Control

The Stormwater Quality (SWQ) Section of the Albuquerque Planning Department inspected your site on 2/12/24 and 4/4/24 and observed the following violations.

1. **Stabilization** – The site was covered by mostly bare dirt that had been inactive for more than 14 days, and stabilization was missing in violation of CGP 2.2.14.



2. **BMPs** - Erosion and sediment controls were not implemented and maintained to minimize the discharge of pollutants in stormwater from this site in violation of CGP 2.1. The silt fence was down and missing along the low sides (north and west) of the site in violation of CGP 2.2.3.



CITY OF ALBUQUERQUE

Planning Department
Alan Varela, Director



Mayor Timothy

M. Keller

3. **Posting**—CGP coverage was not posted to be visible from the public road nearest to the active part of the construction site, using a font large enough to be readily viewed from a public right-of-way in violation of CGP 1.5.
4. **SWPPP** The up-to-date SWPPP and /or self-inspection reports were not available on-site at the time of inspection in violation of CGP 7.1 and 7.3. No personnel were present on site, and the location of the SWPPP was not posted on a sign near the entrance in violation of CGP 7.3.

Required Mitigation:

1. **Stabilization** - Implement and maintain stabilization measures in areas that remain inactive for 14 days or more. Measures must be initiated within 14 days and complete the installation not later than 14 days. **Stabilize the inactive disturbed areas.**
2. **BMPs** - Ensure that all stormwater controls (BMPs), including the silt fence and construction entrance, are installed and maintained and remain in effective operating condition during permit coverage per CGP 2.1.4. If at any time you find that a stormwater control needs routine Maintenance, you must immediately initiate the needed maintenance work and complete such work by the close of the next business day. When the problem requires a new or replacement control or significant repair, install the new or modified control and make it operational or complete the repair by no later than seven (7) calendar days from the time of discovery per CGP 5.2.1. Reset and repair perimeter controls per CGP 2.2.3 and as identified in your SWPPP.
3. **Posting** -You must post a sign or other notice of your permit coverage at a safe, publicly accessible location in close proximity to the construction site. The notice must be located so it is visible from the public road that is nearest to the active part of the construction site, and it must use a font large enough to be readily viewed from a public right-of-way per CGP 1.5.
4. **SWPPP** -The SWPPP, including the SWPPP map, Self-Inspection Reports, and Corrective Action Reports, must be kept up-to-date per CGP 7.1 and available on-site per CGP 4.7.3, 5.4.3, and 7.3. If an on-site location is unavailable to keep the SWPPP when no personnel are present, a notice of the plan's location must be posted near the main entrance of your construction site per CGP 7.3.

History of Violations:

Notice of the following types of violations was sent on the dates noted below:

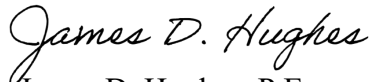
1. **Stabilization** 4/10/24 (Level 1)
2. **BMPs** – 2/20/24 (Level 1), 4/10/24 (level 2)
3. **Posting** - 2/20/24 (Level 1), 4/10/24 (level 2)
4. **SWPPP** – 2/20/24 (Level 1), 4/10/24 (level 2)

The City Escalation Process (attached) describes four levels of escalation based on the number of repeats and/or recalcitrant violations of each type.

If the Level 2 violations are not mitigated within seven days, the property owner is subject to a fine of \$500/day per the City's Drainage Control Ordinance, and the non-compliance will be reported to the EPA. Repeat violations are also subject to a fine of \$500/day.

If you have any questions, contact me at 924-3420, jhughes@cabq.gov .

Sincerely,

A handwritten signature in cursive script that reads "James D. Hughes".

James D. Hughes, P.E.

Principal Engineer, Hydrology/Stormwater Quality
Planning Dept.