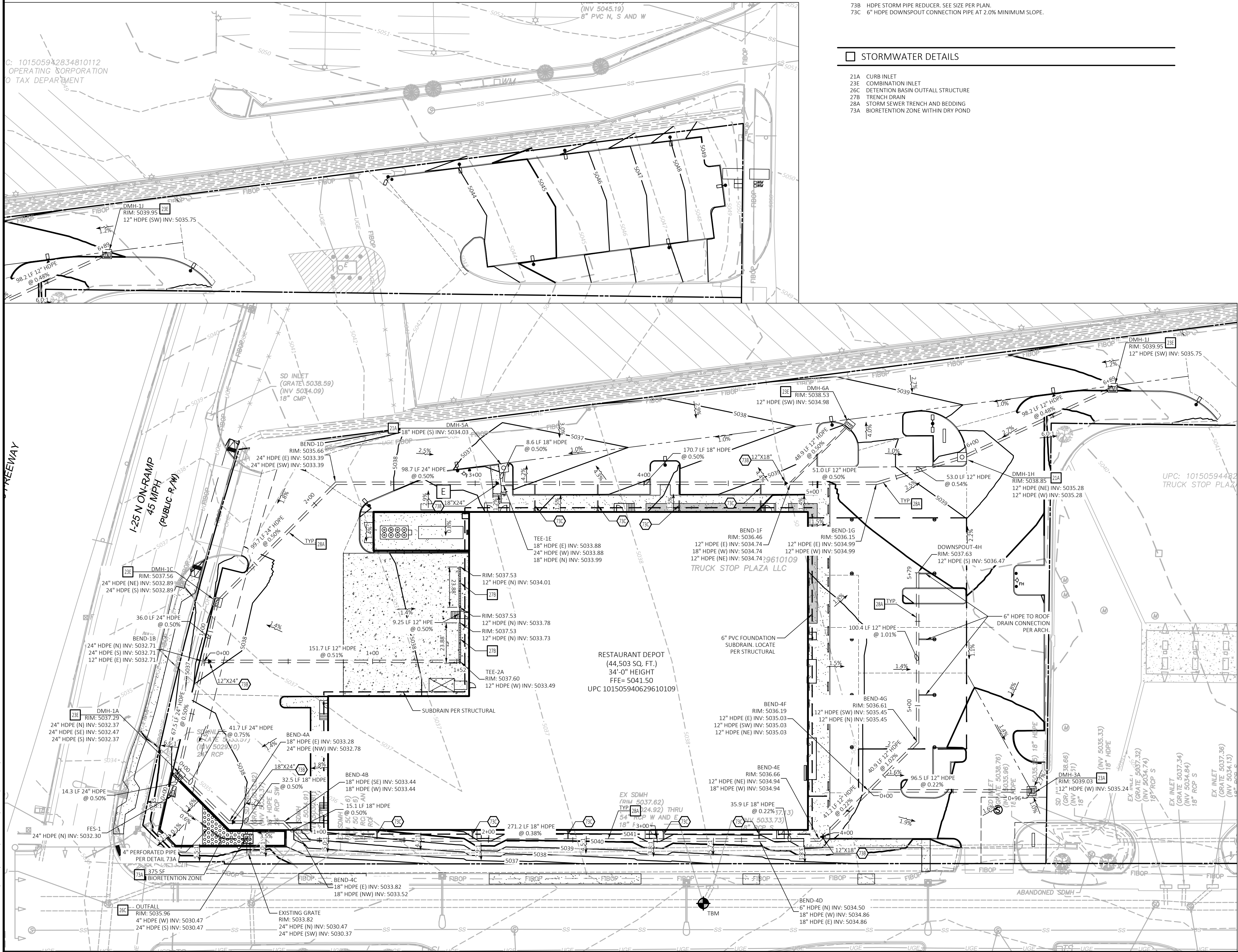


C: 101505942834810112
OPERATING CORPORATION
TAX DEPARTMENT

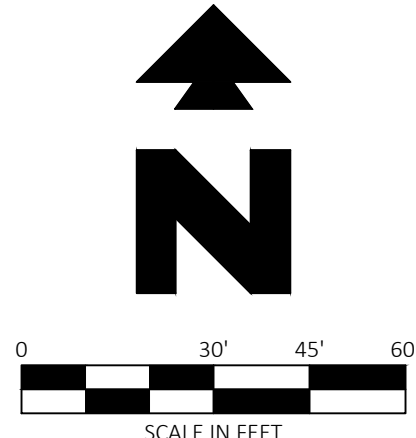
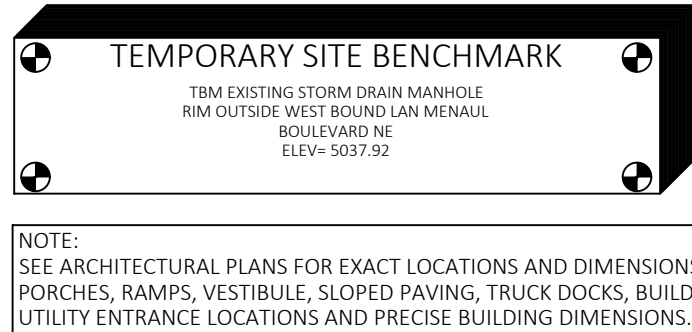


STORMWATER NOTES

- 73B HDPE STORM PIPE REDUCER. SEE SIZE PER PLAN.
73C 6" HDPE DOWNSPOUT CONNECTION PIPE AT 2.0% MINIMUM SLOPE.

STORMWATER DETAILS

- 21A CURB INLET
23E COMBINATION INLET
26C DETENTION BASIN OUTFALL STRUCTURE
27B TRENCH DRAIN
28A STORM SEWER TRENCH AND BEDDING
73A BIORETENTION ZONE WITHIN DRY POND



EXISTING LEGEND

- | | |
|---------------------------|-----------------------------------|
| CENTERLINE | UTILITY POLE |
| SUBJECT PROPERTY | GUY WIRE ANCHOR |
| RIGHT-OF-WAY LINE | PVC RISER, NUMBER & SIZE AS SHOWN |
| ADJOINING PROPERTY | ELECTRICAL METER |
| EASEMENT LINE | ELECTRICAL VAULT |
| BUILDING SETBACK LINE | ELECTRICAL MANHOLE |
| CONCRETE HATCH | ELECTRICAL PULLBOX |
| CONCRETE SIDEWALK | ELECTRICAL BOX |
| CHAIN LINK FENCE | ELECTRICAL TRANSFORMER |
| SCREEN WALL | CABLE TELEVISION PEDESTAL |
| RETAINING WALL | CABLE TELEVISION PULLBOX |
| OVERHEAD ELECTRICAL | CABLE TELEVISION VAULT |
| UNDERGROUND ELECTRICAL | TRAFFIC SIGNAL LIGHT |
| GAS LINE | TRAFFIC SIGNAL FLASHER |
| FIBER OPTIC LINE | PEDESTRIAN SIGNAL |
| CABLE TV LINE | TRAFFIC VAULT |
| WATER LINE | TRAFFIC SIGNAL CABINET |
| STORM DRAIN LINE | TRAFFIC SIGNAL PULLBOX |
| SANITARY SEWER LINE | STREET LIGHT PULLBOX |
| WATER METER | STREET LIGHT |
| WATER BOX | STREET LIGHT VAULT |
| WATER MANHOLE | AREA LIGHT |
| WATER AIR RELEASE VALVE | GROUND LIGHT |
| IRRIGATION CONTROL BOX | NATURAL GAS VALVE |
| FIRE HYDRANT | NATURAL GAS METER ASSEMBLY |
| WATER VALVE | NATURAL GAS VAULT |
| WATER BLOW-OFF | NATURAL GAS MANHOLE |
| FDC ON BLDG. | TELEPHONE PULLBOX |
| REMOTE FDC | TELEPHONE VAULT |
| STORM DRAIN MANHOLE | TELEPHONE MANHOLE |
| STORM DRAIN DROP INLET | TELEPHONE PEDESTAL |
| CATCH BASIN | FIBER OPTIC MANHOLE |
| SIGN | FIBER OPTIC VAULT |
| BOLLARD POST | FIBER OPTIC PEDESTAL |
| GATE | FIBER OPTIC PULLBOX |
| FLAG POLE | SANITARY SEWER MANHOLE |
| TREES | SANITARY SEWER CLEAN OUT |
| UTILITY VAULT - UNKNOWN | SANITARY SEWER VAULT |
| UTILITY PULLBOX - UNKNOWN | GREASE TRAP/INTERCEPTOR MANHOLE |
| UTILITY MANHOLE - UNKNOWN | |
| ELECTRIC PEDESTAL | |

PROPOSED GRADING LEGEND

- | | |
|---------------------------------|--|
| PROPERTY LINE/RIGHT OF WAY LINE | CURB INLET |
| STORM LINE | COMBINATION INLET |
| PROPERTY LINE/RIGHT OF WAY LINE | FLARED END SECTION |
| CONTOUR ELEVATIONS | LIMITS OF ENGINEERED MEDIA PER DETAIL 73A - BIORETENTION AREA ZONE WITHIN DRY POND |
| GRADE BREAK | |
| SPOT ELEVATIONS: | |
| TC = TOP OF CURB | |
| G = GUTTER | |
| FFE = FINISH FLOOR ELEVATION | |
| FG = FINISH GRADE | |

GENERAL GRADING NOTES

- A. PRIOR TO INSTALLATION OF STORM OR SANITARY SEWER, THE CONTRACTOR SHALL EXCAVATE, VERIFY, AND CALCULATE ALL CROSSINGS AND INFORM THE OWNER AND THE ENGINEER OF ANY CONFLICTS PRIOR TO CONSTRUCTION. THE ENGINEER WILL BE HELD HARMLESS IN THE EVENT THE ENGINEER IS NOT NOTIFIED OF DESIGN CONFLICTS.
- B. CONTRACTOR HAS THE OPTION TO BID THE FOLLOWING MATERIAL FOR THE STORM SEWER SYSTEM EXCEPT WHERE OTHERWISE NOTED: RCP OR HDPE AS INDICATED ON THIS PLAN WHERE THE WORD PIPE IS USED. ALL PIPES SHALL HAVE A MAXIMUM ROUGHNESS COEFFICIENT (N) OF 0.013 AND SHALL MEET OR EXCEED THE PIPE MANUFACTURERS REQUIREMENTS FOR MINIMUM AND MAXIMUM COVER. CONTRACTOR SHALL REFER TO THE SITEMARK SPECIFICATION SECTION FOR STORM SEWER SYSTEMS FOR ACCEPTABLE TYPE AND MATERIAL.
- C. ALL SLOPES AND AREAS DISTURBED BY CONSTRUCTION SHALL BE GRADED SMOOTH AND 4" OF TOPSOIL APPLIED. IF ADEQUATE TOPSOIL IS NOT AVAILABLE ON SITE, THE CONTRACTOR SHALL PROVIDE TOPSOIL, APPROVED BY THE OWNER, AS NEEDED. THE AREA SHALL THEN BE SEEDED, FERTILIZED, MULCHED, WATERED AND MAINTAINED UNTIL HARDY GRASS GROWTH IS ESTABLISHED IN ALL AREAS (SEE LANDSCAPE PLAN FOR SEED MIX AND PROPER APPLICATION RATE). ANY AREAS DISTURBED FOR ANY REASON PRIOR TO FINAL ACCEPTANCE OF THE PROJECT SHALL BE CORRECTED BY THE CONTRACTOR AT NO ADDITIONAL COST TO THE OWNER.
- D. THE CONTRACTOR IS SPECIFICALLY CAUTIONED THAT THE LOCATION AND/OR ELEVATION OF EXISTING UTILITIES AS SHOWN ON THESE PLANS IS BASED ON RECORDS OF THE VARIOUS UTILITY COMPANIES, AND WHERE POSSIBLE, MEASUREMENTS TAKEN IN THE FIELD. THE INFORMATION IS NOT TO BE RELIED ON AS BEING EXACT OR COMPLETE. THE CONTRACTOR MUST CALL THE APPROPRIATE UTILITY COMPANY AT LEAST 48 HOURS BEFORE ANY EXCAVATION TO REQUEST EXACT FIELD LOCATION OF UTILITIES.
- E. UNLESS OTHERWISE SHOWN, CALLED OUT OR SPECIFIED HEREON OR WITHIN THE SPECIFICATIONS, ALL STORM DRAIN PIPE BEDDING SHALL BE INSTALLED PER DETAIL 28A. ALL STORM DRAIN PIPES ARE MEASURED FROM CENTER OF STRUCTURES AND ENDS OF FLARED END SECTIONS.

NO.	DATE	REVISIONS DESCRIPTION
1	04/08/2022	FOR BIDDING
2	04/12/2022	FOR PERMIT
3	06/27/2022	PLAN REVIEW REV'S (REV #2)



CEI ENGINEERING ASSOCIATES, INC.
3108 SW REGENCY PKWY
BENTONVILLE, AR 72712
PHONE: (479) 273-9472
FAX: (479) 273-0844

RESTAURANT DEPOT
1901 MENAUL BLVD NE
ALBUQUERQUE, NEW MEXICO



6/28/22

PROFESSIONAL OF RECORD	JDG
PROJECT MANAGER	JEH
DESIGNER	HMK/MDT
CEI PROJECT NUMBER	32348
DATE	6/27/2022
REVISION	REV-0

DRAINAGE PLAN

SHEET TITLE
SHEET NUMBER

C4.1