

DRAWING LOCATION: P:\230003\23248\0\PERMITTING\2022\07-05\SVDO\SUBMITTAL\23248-EREN-CENTERL-NOTES.DWG - SAVED BY: MTHOU/PSO

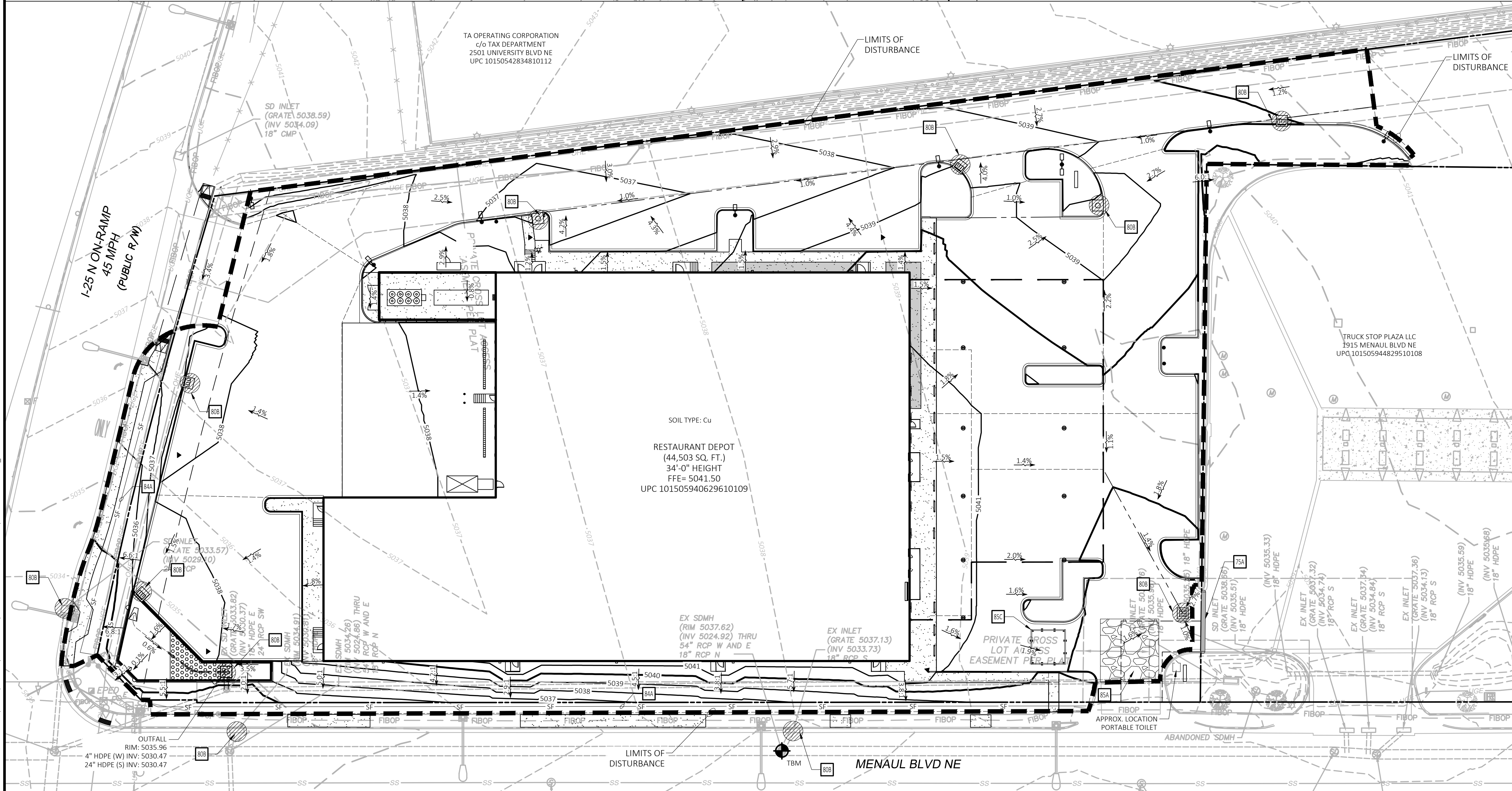
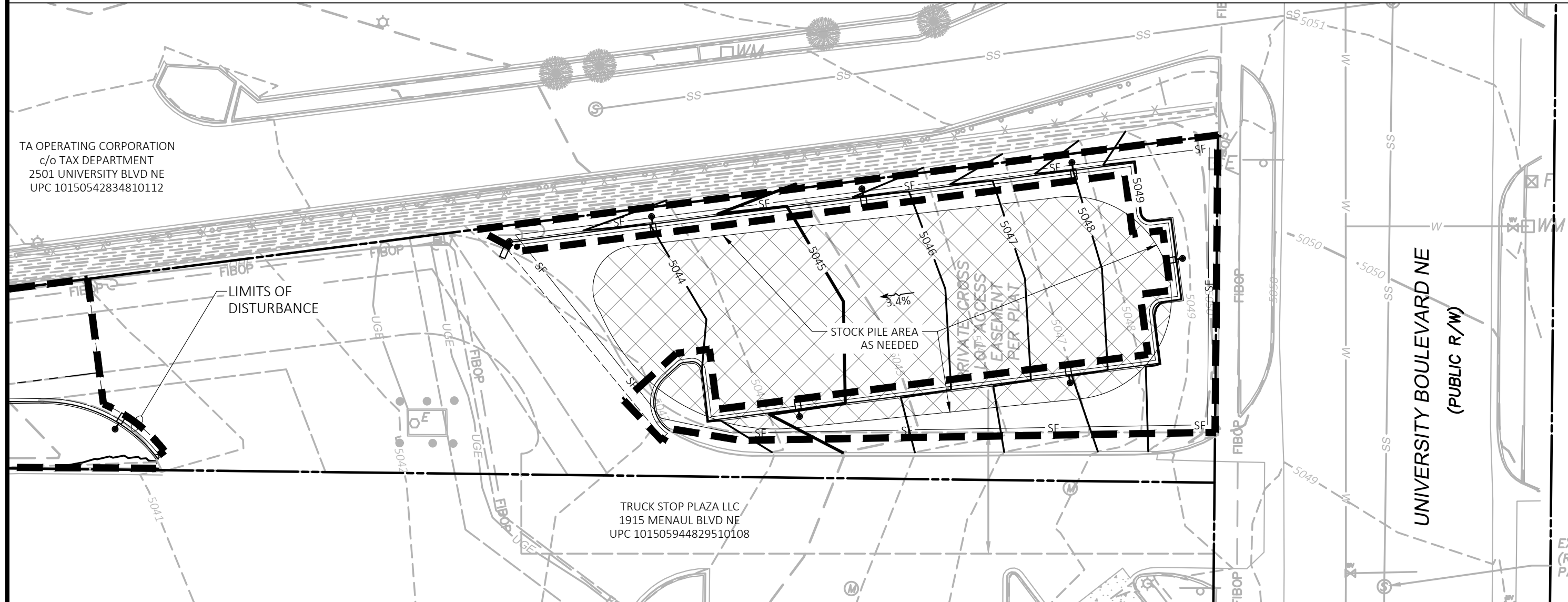
© 2022 CEI ENGINEERING ASSOCIATES, INC.

SOIL INFORMATION

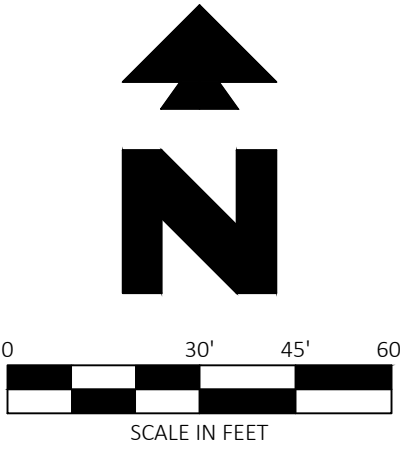
NAME	TYPE	PARTICLE SIZE	ERODIBILITY FACTOR (K VALUE)
Cu	CUT AND FILL LAND	22	0
* SOIL INFORMATION TAKEN FROM WEB SOIL SURVEY BY: http://websoilsurvey.nrcs.usda.gov			

STABILIZATION MEASURES

- CONTRACTOR TO INSTALL TEMPORARY EROSION CONTROL BLANKETS ON DISTURBED AREAS PRIOR TO FINAL COMPACTION OF FINISH MATERIALS.
- CONTRACTOR TO ENSURE BLANKET PROTECTION DURING SUMMER/RAINY SEASON PERIODS.
- PROJECT SCHEDULED TO COMMENCE OCTOBER 2022 AND COMPLETE DECEMBER 2023.



TEMPORARY SITE BENCHMARK
TBM EXISTING STORM DRAIN MANHOLE
RIM OUTSIDE WEST BOUND LAN MENAUL
BOULEVARD NE
ELEV= 5037.92



NOTE:
SEE ARCHITECTURAL PLANS FOR EXACT LOCATIONS AND DIMENSIONS OF PORCHES, RAMPS, VESTIBULE, SLOPED PAVING, TRUCK DOCKS, BUILDING UTILITY ENTRANCE LOCATIONS AND PRECISE BUILDING DIMENSIONS.

EXISTING LEGEND

CENTERLINE	UTILITY POLE
SUBJECT PROPERTY	GUY WIRE ANCHOR
RIGHT-OF-WAY LINE	PVC RISER, NUMBER & SIZE AS SHOWN
ADJOINING PROPERTY	ELECTRICAL METER
EASEMENT LINE	ELECTRICAL VAULT
BUILDING SETBACK LINE	ELECTRICAL MANHOLE
CONCRETE HATCH	ELECTRICAL PULLBOX
CONCRETE SIDEWALK	ELECTRICAL BOX
CHAIN LINK FENCE	ELECTRICAL TRANSFORMER
SCREEN WALL	CABLE TELEVISION PEDESTAL
RETAINING WALL	CABLE TELEVISION PULLBOX
OVERHEAD ELECTRICAL	CABLE TELEVISION VAULT
UNDERGROUND ELECTRICAL	TRAFFIC SIGNAL LIGHT
GAS LINE	TRAFFIC SIGNAL FLASHER
FIBER OPTIC LINE	PEDESTRIAN SIGNAL
CABLE TV LINE	TRAFFIC VAULT
WATER LINE	TRAFFIC SIGNAL CABINET
STORM DRAIN LINE	TRAFFIC SIGNAL PULLBOX
SANITARY SEWER LINE	STREET LIGHT PULLBOX
WATER METER	STREET LIGHT
WATER BOX	STREET LIGHT VAULT
WATER MANHOLE	AREA LIGHT
WATER AIR RELEASE VALVE	GROUND LIGHT
IRRIGATION CONTROL BOX	NATURAL GAS VALVE
FIRE HYDRANT	NATURAL GAS METER ASSEMBLY
WATER VALVE	NATURAL GAS VAULT
WATER BLOW-OFF	NATURAL GAS MANHOLE
FDC ON BLDG.	TELEPHONE PULLBOX
REMOTE FDC	TELEPHONE VAULT
STORM DRAIN MANHOLE	TELEPHONE MANHOLE
STORM DRAIN DROP INLET	TELEPHONE PEDESTAL
CATCH BASIN	FIBER OPTIC MANHOLE
SIGN	FIBER OPTIC VAULT
BOLLARD POST	FIBER OPTIC PEDESTAL
GATE	FIBER OPTIC PULLBOX
FLAG POLE	SANITARY SEWER MANHOLE
TREES	SANITARY SEWER CLEAN OUT
UTILITY VAULT - UNKNOWN	SANITARY SEWER VAULT
UTILITY PULLBOX - UNKNOWN	GREASE TRAP/INTERCEPTOR MANHOLE
UTILITY MANHOLE - UNKNOWN	
ELECTRIC PEDESTAL	

PROPOSED LEGEND

PROPERTY LINE/RIGHT OF WAY LINE	CONCRETE WASHOUT
LIMITS OF DISTURBANCE	CONSTRUCTION ENTRANCE
CONTOUR ELEVATIONS	INLET PROTECTION
GRADE BREAK	SWP-CI (BIG RED)
FLOWLINE	
STRAW WATTLE	
STORM DRAIN	
SILT FENCE	
ROCK CHECK DAM	

GENERAL EROSION NOTES

- A. SEE SHEET "EROSION CONTROL NOTES" FOR EROSION CONTROL NOTES AND DETAILS.

EROSION DETAILS

- 75A BIG RED
80B TEMPORARY STRAW BALE INLET SEDIMENT FILTER
84A TEMPORARY SILT FENCE
85A TEMPORARY STONE CONSTRUCTION ENTRANCE
85C TEMPORARY CONCRETE WASH OUT.

SITE DATA

TRACT A-1, TRUCK STOP PLAZA, DOC. #2019104164
AREA = 171,104 S.F. ±
3.93 AC ±

SITE DESCRIPTION

THIS PROPOSED COMMERCIAL DEVELOPMENT ON THE INTERSECTION OF MENAUL BLVD NE & I-25 N ON-RAMP, ALBUQUERQUE, NEW MEXICO, MEETS THE GENERAL PROVISIONS OF THE CITY OF ALBUQUERQUE DEVELOPMENT PROCESS MANUAL WITH REGARD TO THE MANAGEMENT OF STORMWATER RUNOFF. THE PROPOSED WORK DOES NOT ALTER THE OVERALL DRAINAGE PATTERNS THAT CURRENTLY EXIST, NOR WILL IT INCREASE THE DISCHARGE OF RUNOFF EXPECTED FROM THE SITE FOR THE APPLICABLE STORM EVENTS WHEN COMPARED TO EXISTING, PRE-DEVELOPMENT CONDITIONS.

AREA OF DISTURBANCE = 3.38 ACRES (147,284 S.F.)

NO.	DATE	REVISIONS DESCRIPTION
1	04/08/2022	FOR BIDDING
2	04/12/2022	FOR PERMIT
3	06/27/2022	PLAN REVIEW REV'S (REV #2)



CEI ENGINEERING ASSOCIATES, INC.
3108 SW REGENCY PKWY
BENTONVILLE, AR 72712
PHONE: (479) 273-9472
FAX: (479) 273-0844

RESTAURANT DEPOT
1901 MENAUL BLVD NE
ALBUQUERQUE, NEW MEXICO

PROFESSIONAL OF RECORD	JDG
PROJECT MANAGER	JEH
DESIGNER	HMK/MDT
CEI PROJECT NUMBER	32348
DATE	7/14/2022
REVISION	REV-0

EROSION CONTROL PLAN

SHEET TITLE
SHEET NUMBER

C5.0