

KEYED NOTES

- MOTORCYCLE PARKING WITH MOTORCYCLE PARKING SIGN, SEE DETAIL A2/AS-102
- VAN ACCESSIBLE PARKING SPACE WITH ACCESSIBLE PARKING SIGN, SEE DETAIL AS/AS-102
- PROPERTY LINE
- LINE OF UTILITY EASEMENT
- BICYCLE PARKING RACK (SPACE FOR 2 BICYCLES)
- PARKING BUMPER, TYP.
- DUMPSTER ENCLOSURE WITH GATE. SEE DETAILS
- EXISTING STORAGE SHED TO REMAIN
- NEW 4" WIDE, WHITE COLOR PAINTED STRIPING, TYPICAL
- 4" THICK CRUSHER FINES
- EXISTING CONCRETE SIDEWALK TO REMAIN
- EXISTING SITE ACCESS CURB CUT AND RAMPS TO REMAIN WITH EXISTING SHARED ACCESS AGREEMENT
- EXISTING LANDSCAPE TO REMAIN
- NEW CONCRETE PAD FOR NEW WALK IN FREEZER AND REFRIGERATOR
- NEW ACCESSIBLE CONCRETE SIDEWALK EVEN WITH LEVEL OF PARKING PER CABQ DETAIL 2430.
- ACCESSIBLE RAMP UP TO SIDEWALK PER CABQ STANDARDS (8.3% SLOPE MAX 7% PREFERRED)
- ACCESSIBLE PARKING SPACE ACCESS ISLE. THE ADA ACCESS AISLE SHALL HAVE THE WORDS "NO PARKING" IN CAPITAL LETTERS, EACH OF WHICH SHALL BE AT LEAST ONE FOOT HIGH AND AT LEAST 2 INCHES WIDE, PLACED AT THE REAR OF THE PARKING SPACE SO AS TO BE CLOSE TO WHERE AN ADJACENT VEHICLE'S REAR TIRE WOULD BE PLACED.
- EXISTING ASPHALT PAVING TO REMAIN.
- EXISTING MEDIAN AND LANDSCAPING. NO CHANGES PROPOSED
- NO EXISTING CURB AND GUTTER @ WOODLAND ALLEY WAY
- EXISTING WATER METER TO REMAIN
- OUTDOOR SEATING AREA
- ACCESSIBLE PARKING SIGN, SEE DETAIL THIS SHEET

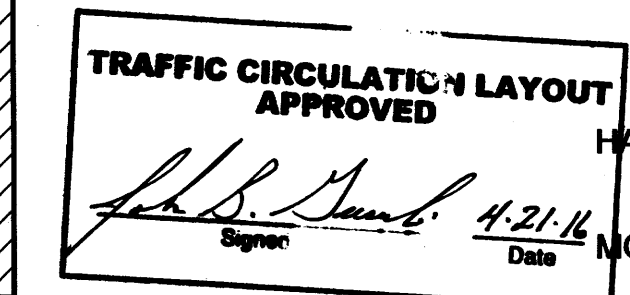
ZONING

ZONE: M-1
MAP H-16-Z

14-16-2-20, M-1 LIGHT MANUFACTURING ZONE

14-16-3-1, FOR M-1 OFF-STREET PARKING FOR RESTAURANT, BAR:
1 SPACE FOR EACH 4 SEATS FOR ESTABLISHMENTS WITHOUT A FULL SERVICE LIQUOR LICENSE
NO. OF SEATS PROVIDED = 89
NO. OF SPACES REQUIRED = 22
PARKING REDUCTION 10% FOR TRANSIT REDUCTION = 2 SPACES
ADJUSTED NO. OF SPACES REQUIRED = 20
NO. OF SPACES PROVIDED = 20

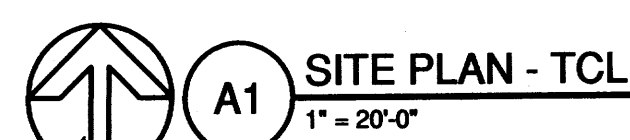
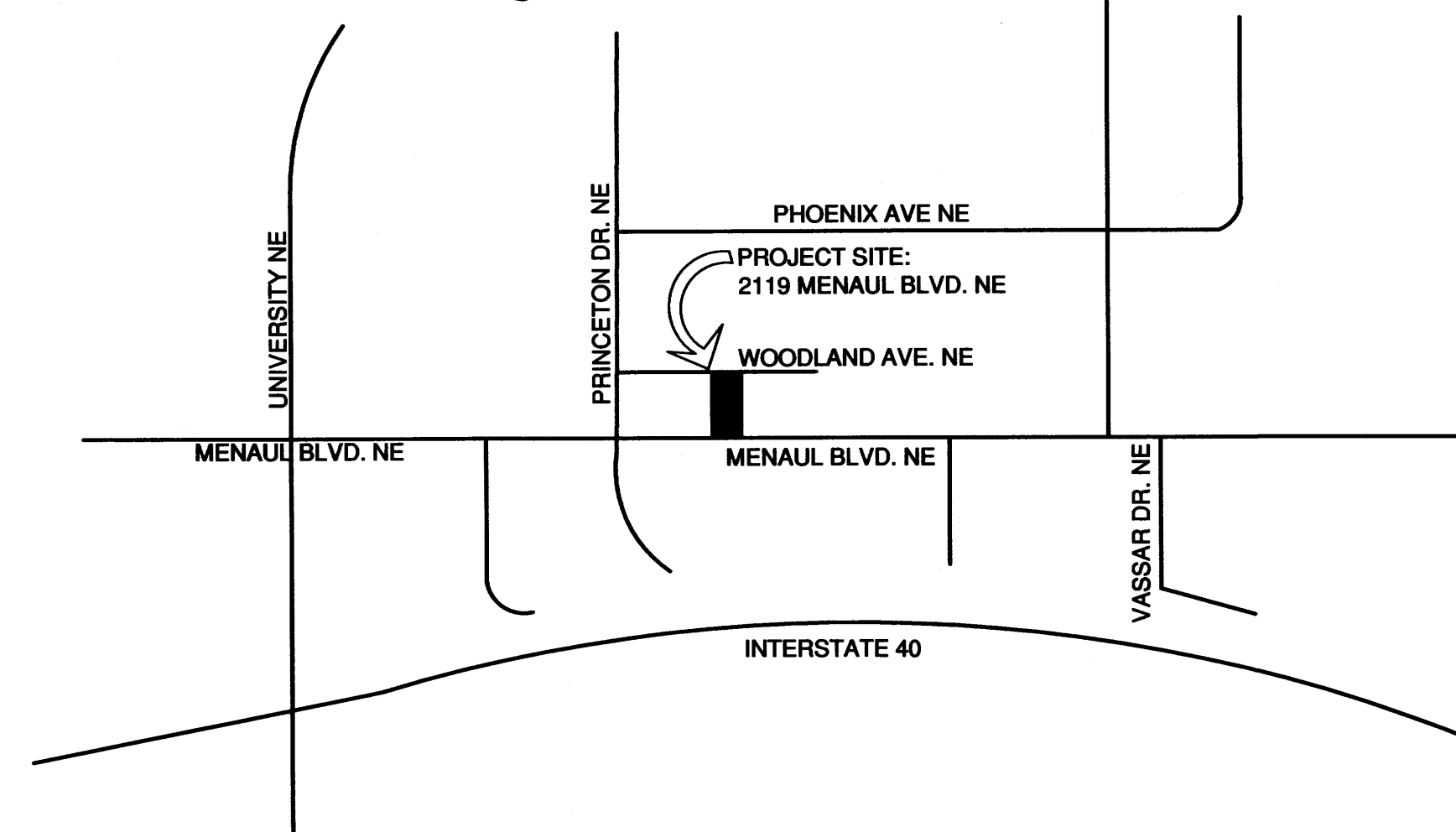
ALL WHEELCHAIR RAMPS LOCATED WITHIN THE PUBLIC RIGHT OF WAY MUST HAVE TRUNCATED DOMES.



HANDICAP PARKING
REQUIRED SPACES WITH 1 TO 25 = 1 (1 VAN ACCESSIBLE SPACE PROVIDED)

MOTOR CYCLE PARKING
REQUIRED = 1 (1 PROVIDED)

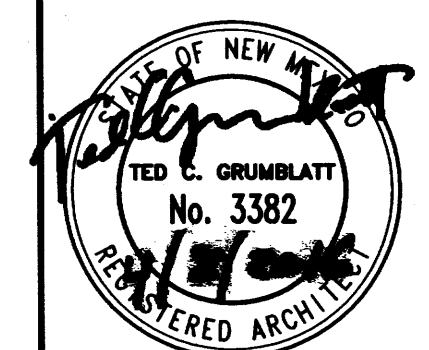
BICYCLE PARKING
REQUIRED @ 1/20 PARKING SPACES = 2 MIN. (2 PROVIDED)



A1 SITE PLAN - TCL
1" = 20'-0"

fbt architects
MAIL: ONE PARK SQUARE
6501 Americas Pkwy NE Ste 300
Albuquerque, NM 87110
PH: 505.883.5200
FAX: 505.884.5390
WEB: www.fbtarch.com

CONSULTANT



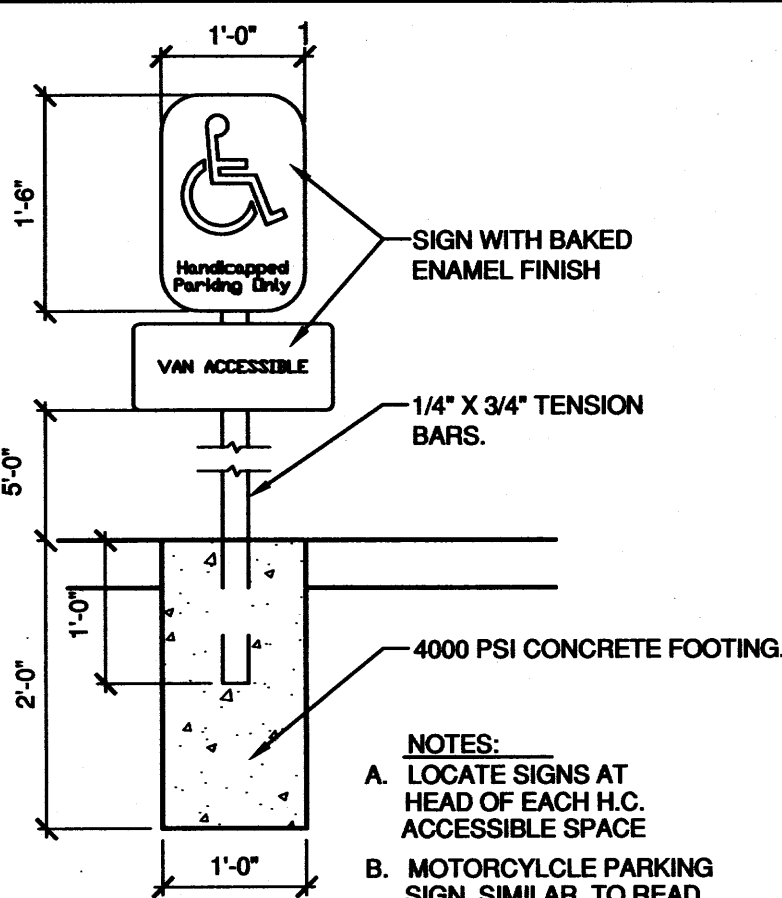
ECLECTICA BUILDING RENOVATION
2119 MENAUL BLVD. NE
ALBUQUERQUE, NM

MARK	DATE	DESCRIPTION

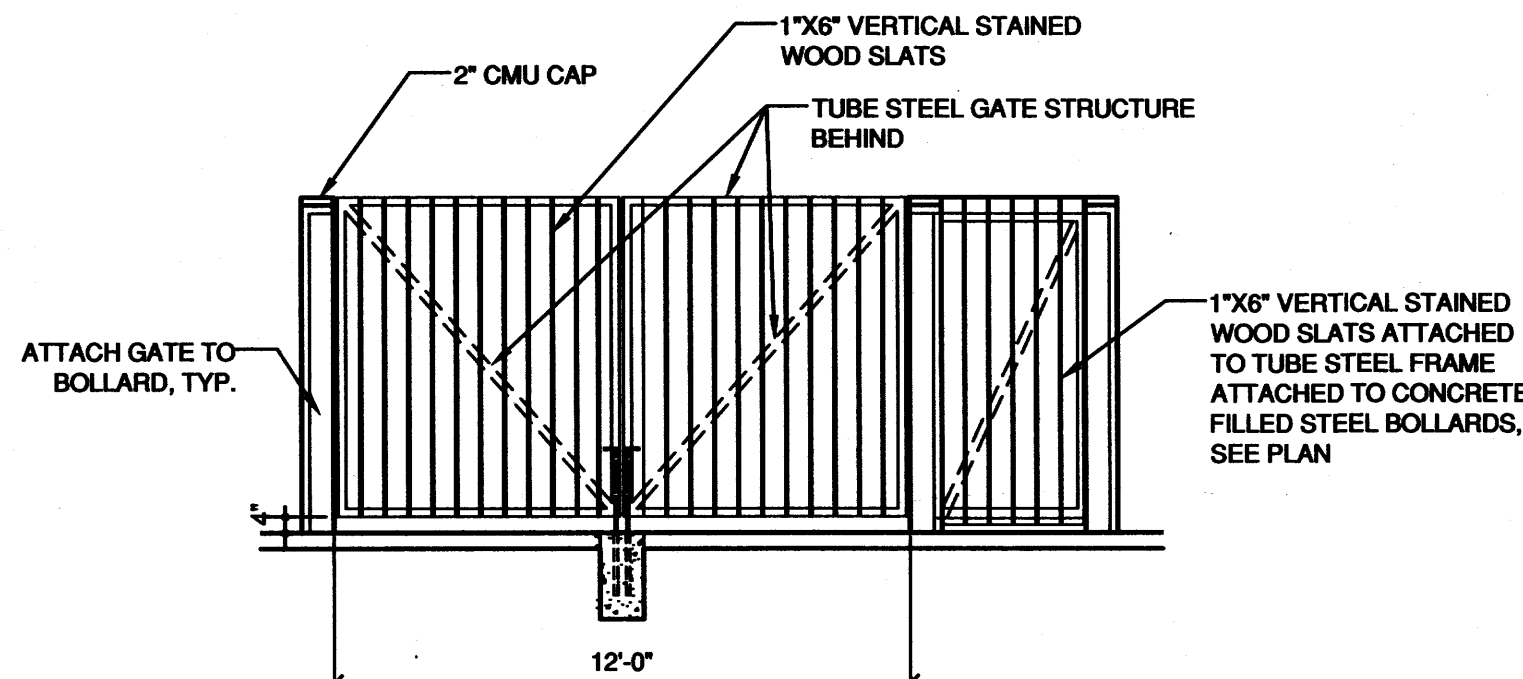
ISSUE: SCHEMATIC DESIGN
DATE: 1/12/2016
PROJECT NO: —
CAD DWG FILE: AS-103 TCL SITE PLAN.DWG
DRAWN BY: TCG
CHECKED BY: ART

SHEET TITLE
TCL SITE PLAN

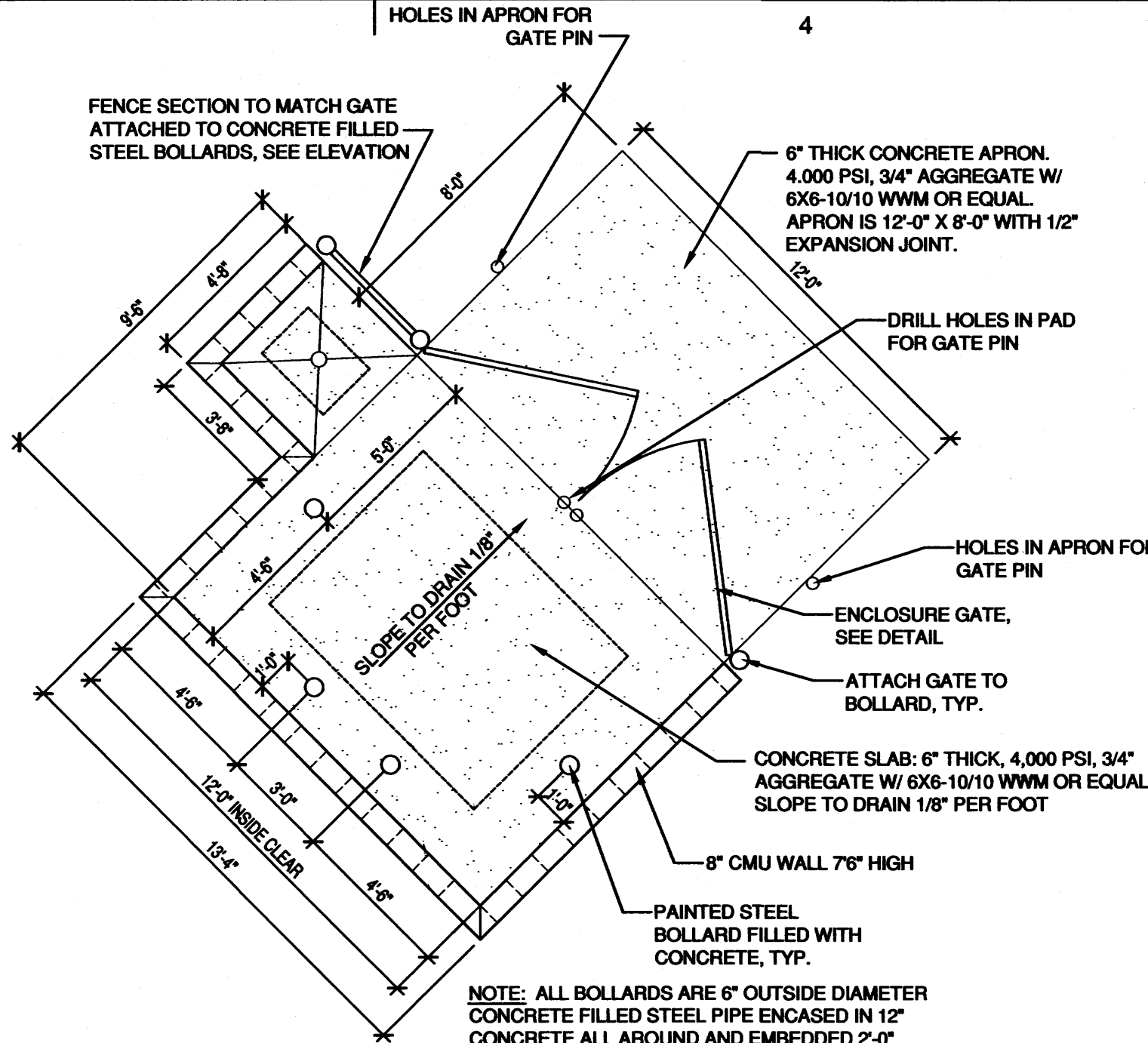
AS-103



D1 ACCESSIBLE PARKING SIGN
SCALE: 3/4" = 1'-0"



D2 DUMPSTER ENCLOSURE GATE
SCALE: 1/4" = 1'-0"



D4 DUMPSTER ENCLOSURE
SCALE: 1/4" = 1'-0"

KEYED NOTES

- MOTORCYCLE PARKING WITH MOTORCYCLE PARKING SIGN, SEE DETAIL A2/AS-102
- VAN ACCESSIBLE PARKING SPACE WITH ACCESSIBLE PARKING SIGN, SEE DETAIL AS/AS-102
- PROPERTY LINE
- LINE OF UTILITY EASEMENT
- BICYCLE PARKING RACK (SPACE FOR 2 BICYCLES)
- PARKING BUMPER, TYP.
- DUMPSTER ENCLOSURE WITH GATE. SEE DETAILS
- EXISTING STORAGE SHED TO REMAIN
- NEW 4" WIDE, WHITE COLOR PAINTED STRIPING, TYPICAL
- 4" THICK CRUSHER FINES
- EXISTING CONCRETE SIDEWALK TO REMAIN
- EXISTING SITE ACCESS CURB CUT AND RAMPS TO REMAIN WITH EXISTING SHARED ACCESS AGREEMENT
- EXISTING LANDSCAPE TO REMAIN
- NEW CONCRETE PAD FOR NEW WALK IN FREEZER AND REFRIGERATOR
- NEW CONCRETE SIDEWALK
- ACCESSIBLE RAMP UP TO SIDEWALK PER CABO STANDARDS
- ACCESSIBLE PARKING SPACE ACCESS ISLE
- EXISTING ASPHALT PAVING TO REMAIN.
- EXISTING MEDIAN AND LANDSCAPING. NO CHANGES PROPOSED
- NO EXISTING CURB AND GUTTER @ WOODLAND ALLEY WAY
- EXISTING WATER METER TO REMAIN
- OUTDOOR SEATING AREA

ZONING

ZONE: M-1

MAP H-16-Z

14-16-2-20, M-1 LIGHT MANUFACTURING ZONE

14-16-3-1, FOR M-1 OFF-STREET PARKING FOR RESTAURANT, BAR:
1 SPACE FOR EACH 4 SEATS FOR ESTABLISHMENTS WITHOUT A FULL SERVICE LIQUOR LICENSE
NO. OF SEATS PROVIDED = 89
NO. OF SPACES REQUIRED = 22
PARKING REDUCTION 10% FOR TRANSIT REDUCTION = 2 SPACES
ADJUSTED NO. OF SPACES REQUIRED = 20
NO. OF SPACES PROVIDED = 20

HANDICAP PARKING

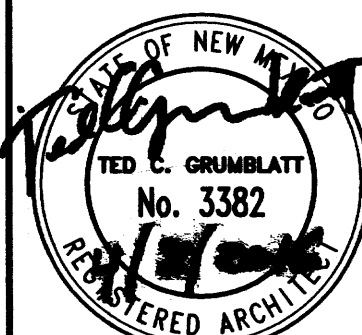
REQUIRED SPACES WITH 1 TO 25 = 1 (1 VAN ACCESSIBLE SPACE PROVIDED)

MOTOR CYCLE PARKING

REQUIRED = 1 (1 PROVIDED)

BICYCLE PARKING

REQUIRED @ 1/20 PARKING SPACES = 2 MIN. (2 PROVIDED)



ECLECTICA BUILDING RENOVATION

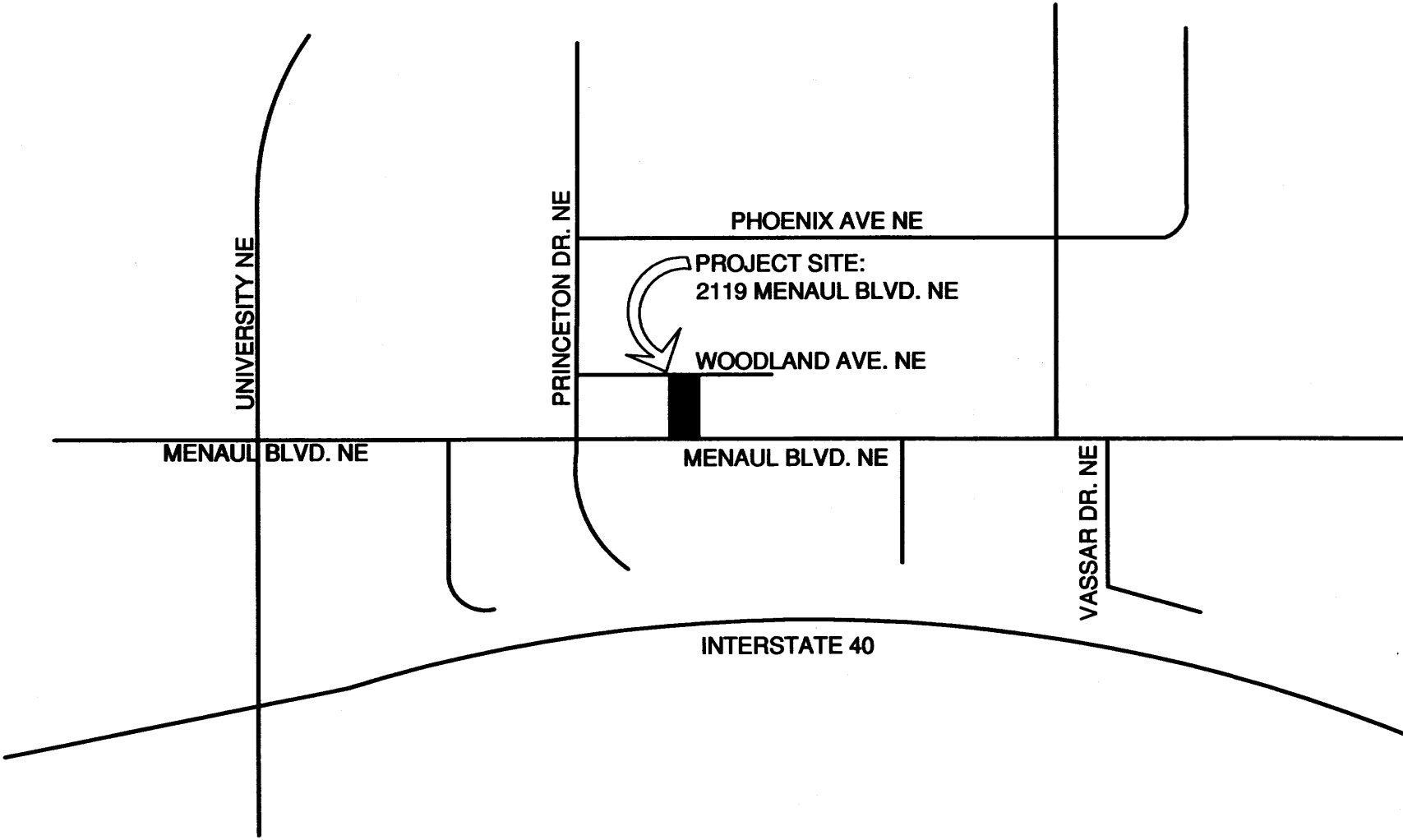
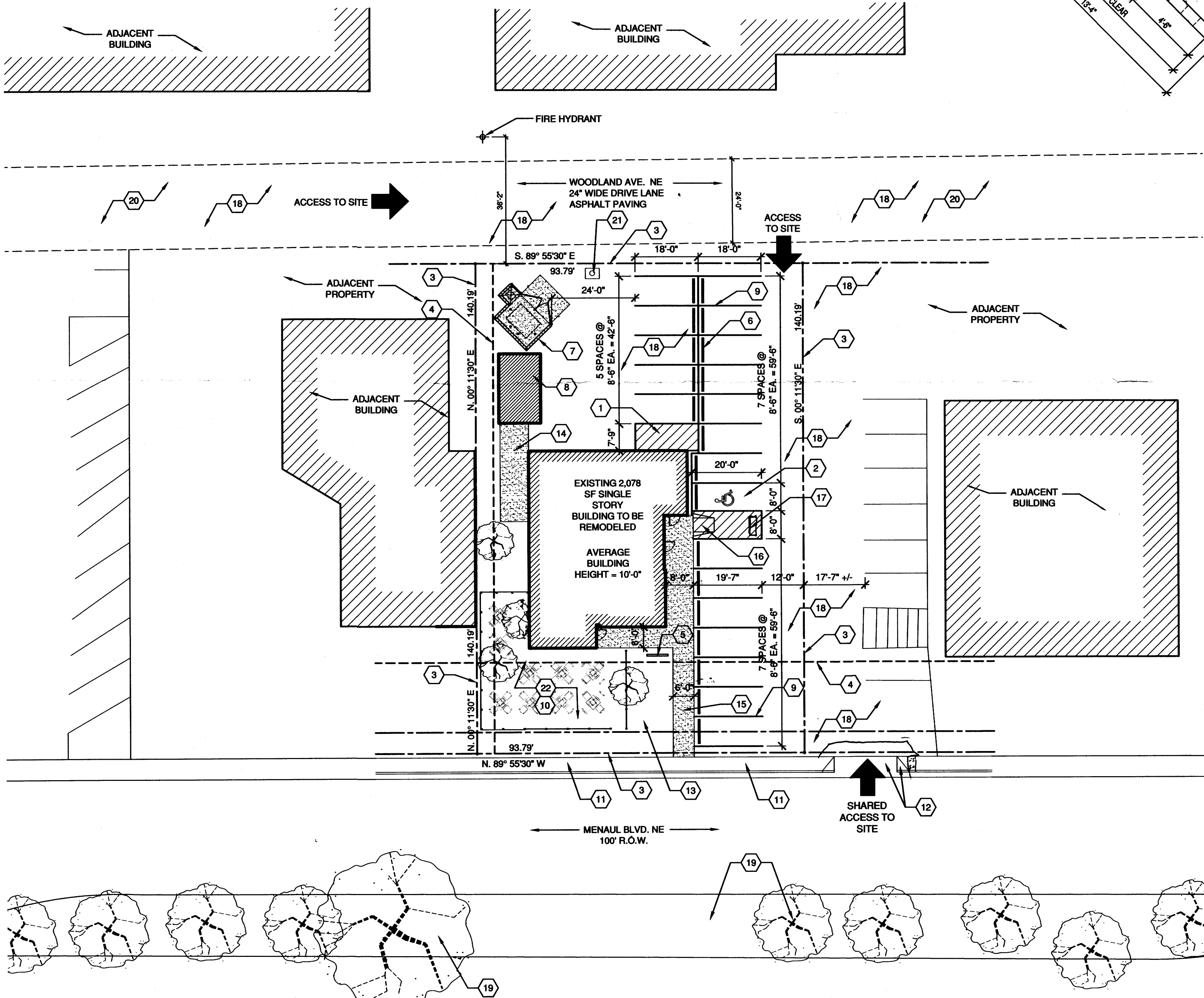
2119 MENAUL BLVD. NE
ALBUQUERQUE, NM

MARK	DATE	DESCRIPTION

ISSUE: SCHEMATIC DESIGN
DATE: 1/12/2016
PROJECT NO: —
CAD DWG FILE: AS-103 TCL SITE PLANDWG
DRAWN BY: TCG
CHECKED BY: ART

SHEET TITLE
TCL SITE PLAN

AS-103



A5 VICINITY MAP
SCALE: NTS

A1 SITE PLAN - TCL
1" = 20'-0"