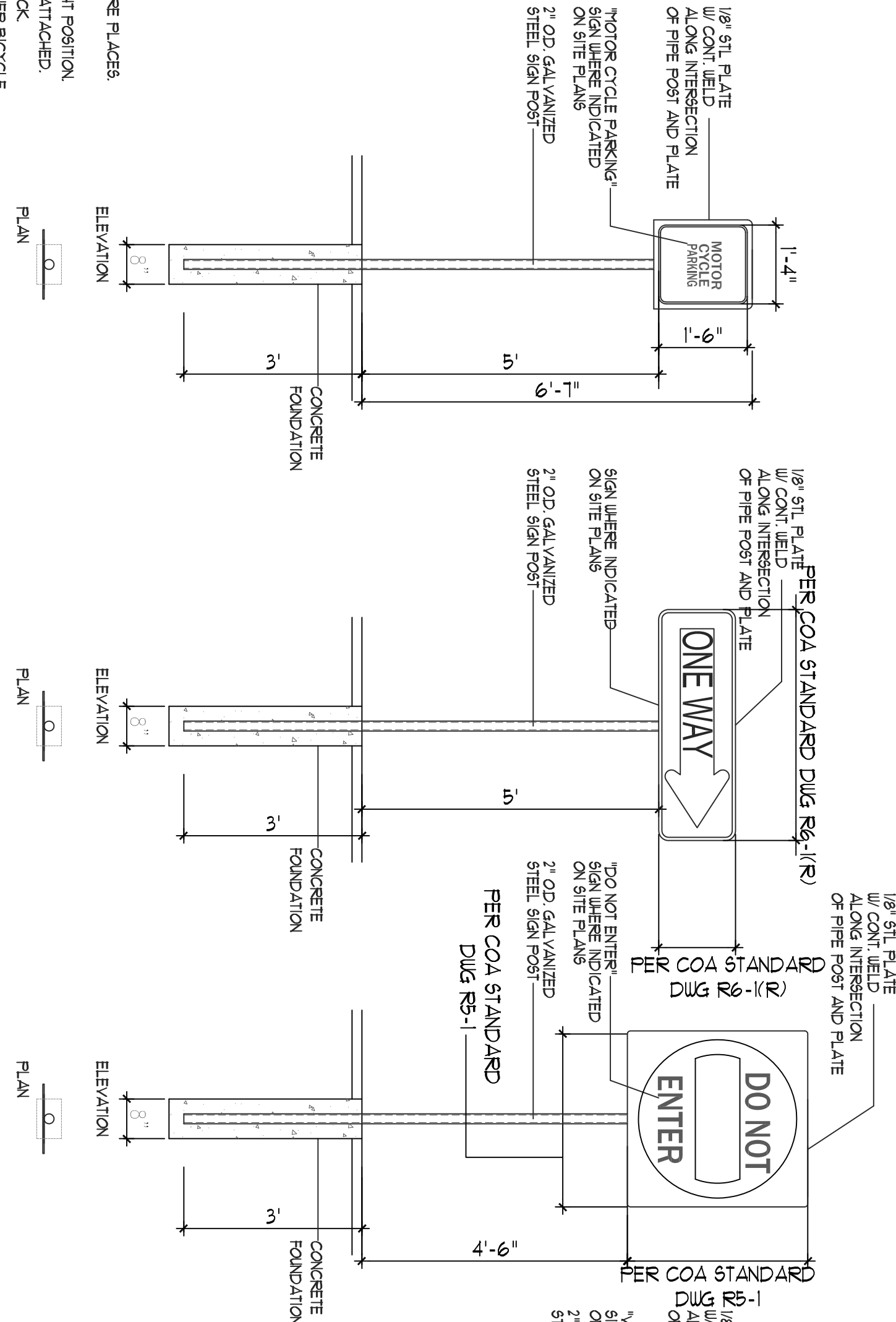


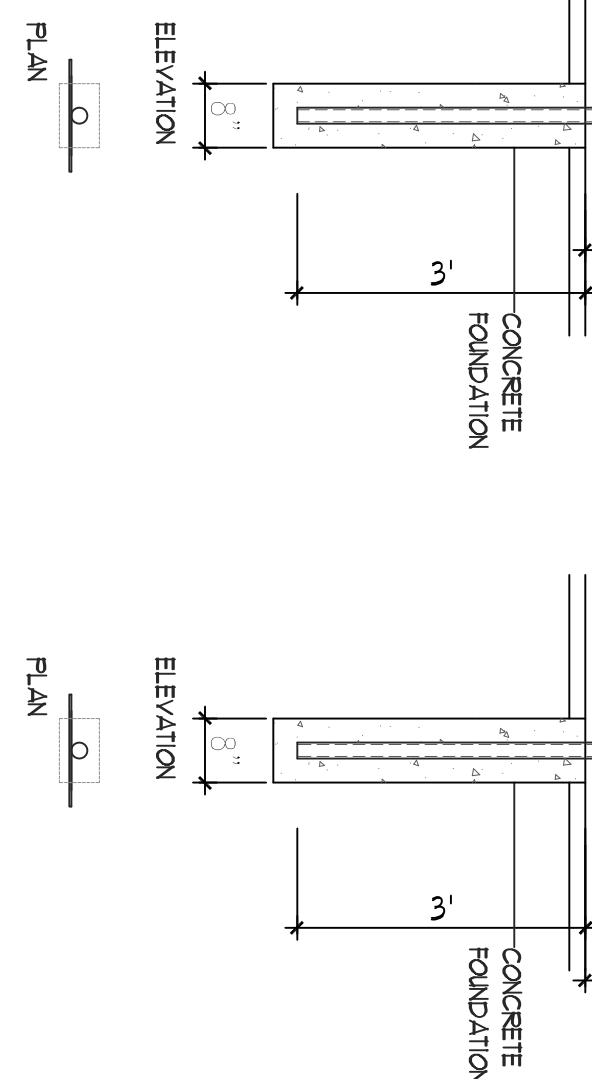
NOTE: BICYCLE RACK SHALL BE DESIGNED ACCORDING TO THE FOLLOWING GUIDELINES:
A. THE RACK SHALL BE MINIMUM 30" TALL AND 18" WIDE.
B. THE BICYCLE FRAME SHALL BE SUPPORTED HORIZONTALLY AT 7 OR MORE PLACES.
C. COMBINATION RACKS ARE NOT ALLOWED.
D. THE RACK SHALL BE DESIGNED TO SUPPORT THE BICYCLE IN AN UPRIGHT POSITION.
E. THE RACK SHALL ALLOW VARYING BICYCLE FRAME SIZES AND STYLES TO BE ATTACHED.
F. THE USER IS NOT REQUIRED TO LIFT THE BICYCLE ONTO THE BICYCLE RACK.
G. EACH BICYCLE PARKING SPACE IS ACCESSIBLE WITHOUT MOVING ANOTHER BICYCLE.

12 BIKE RACK

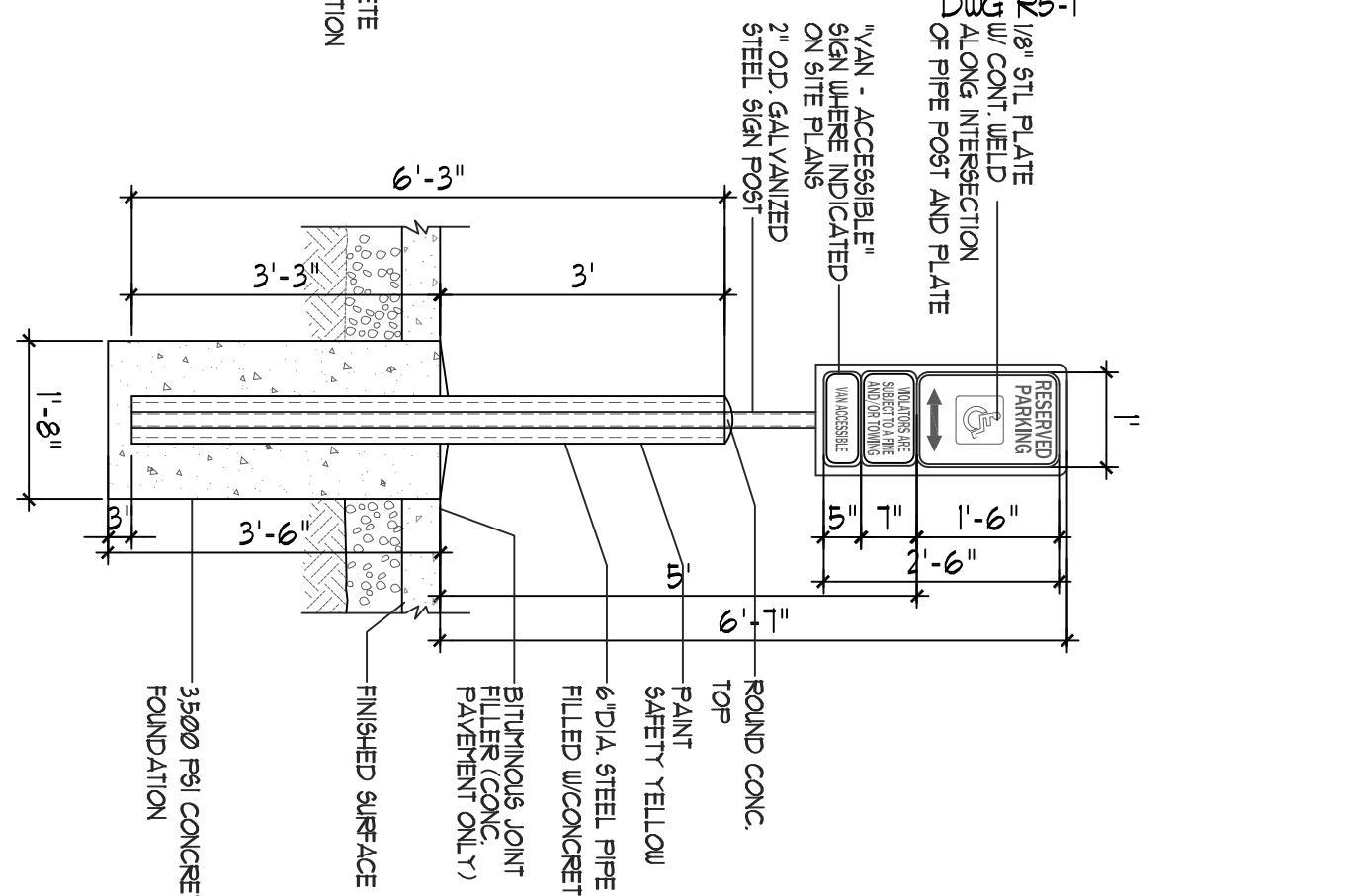
11B MOTORCYCLE SIGNAGE



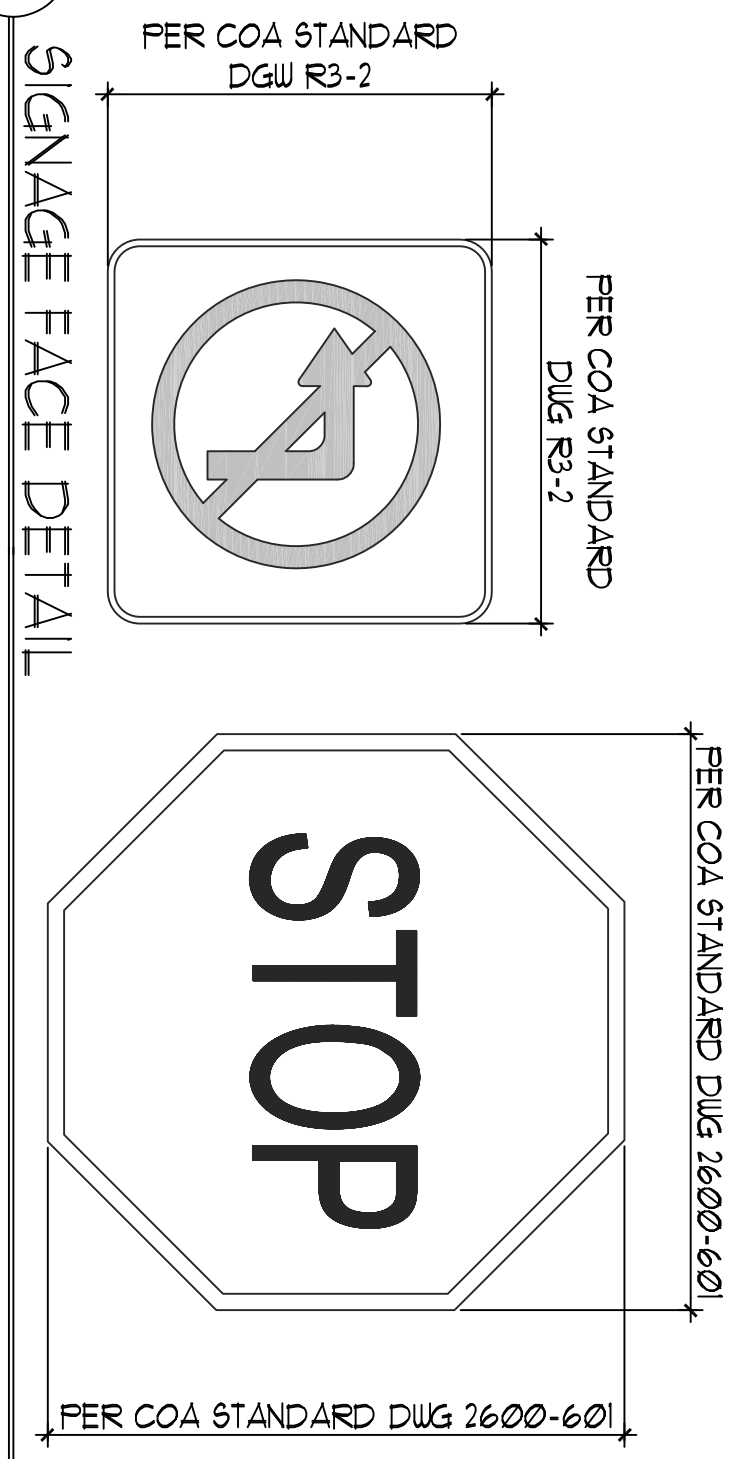
11A DIRECTIONAL SIGNAGE



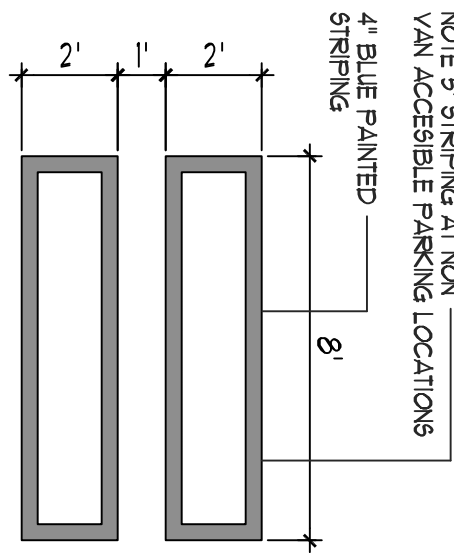
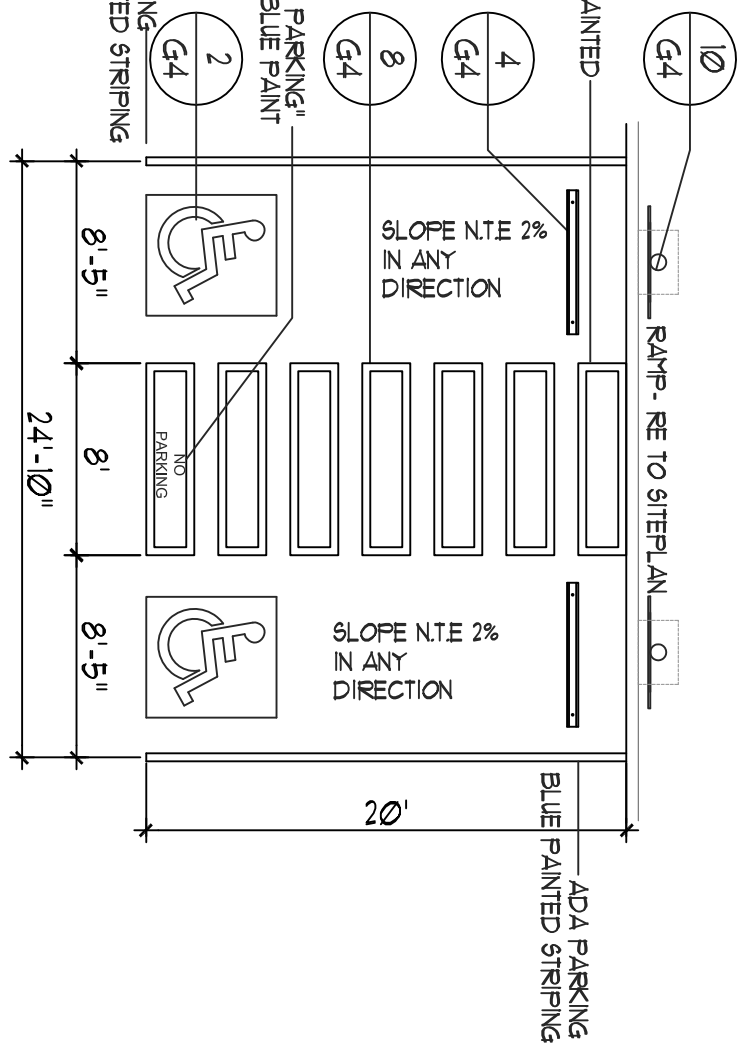
10 HC SIGNAGE



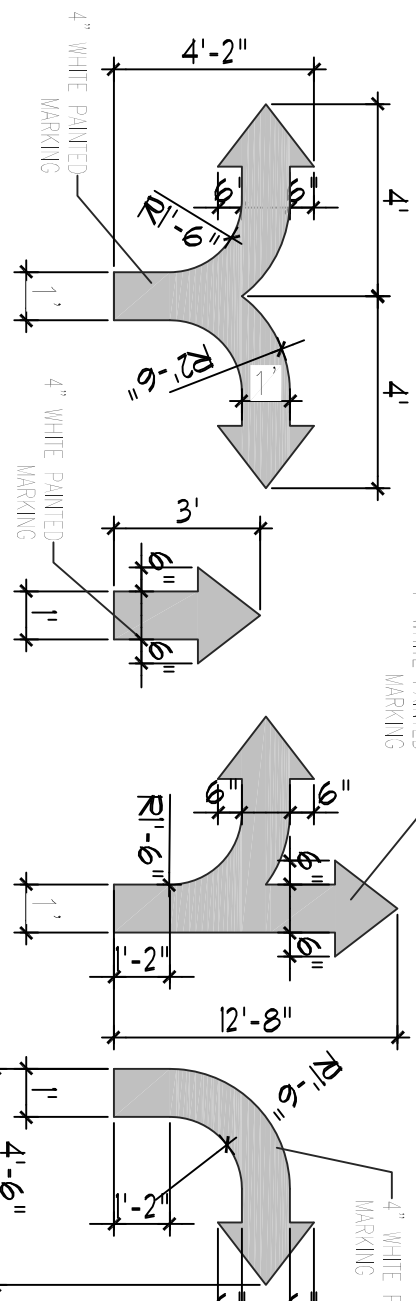
9 SIGNAGE FACE DETAIL



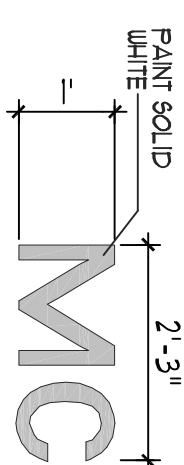
13 HC PARKING PLAN DETAIL (VAN ACCESSIBLE)



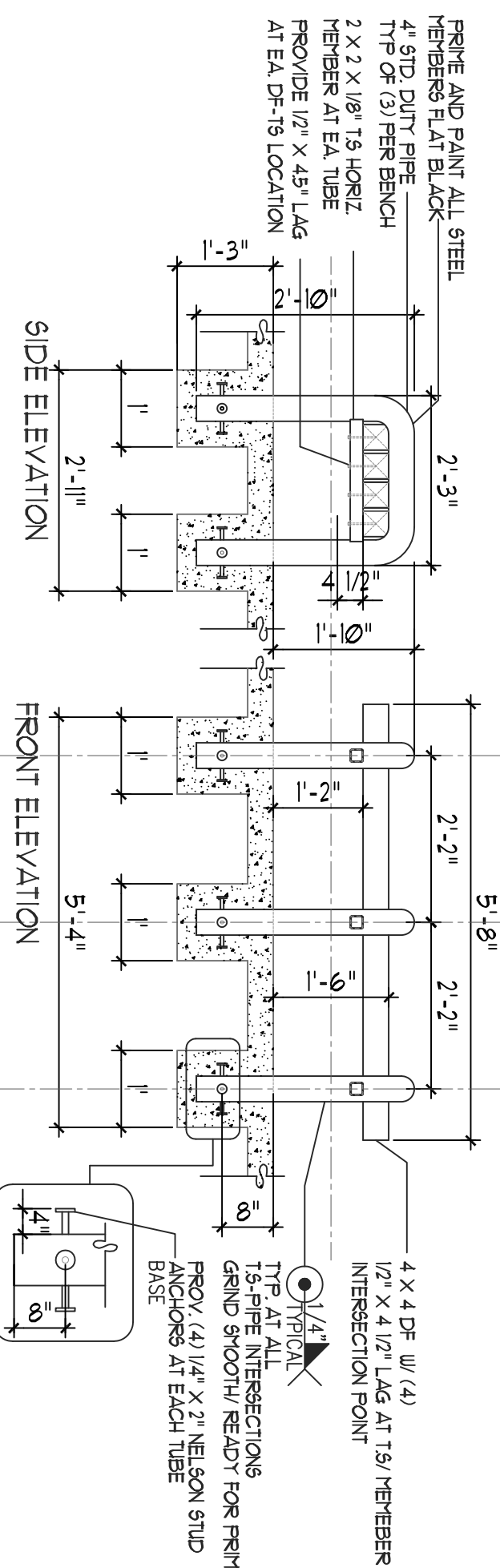
8 HC PARKING-WALK PAINT DETAIL



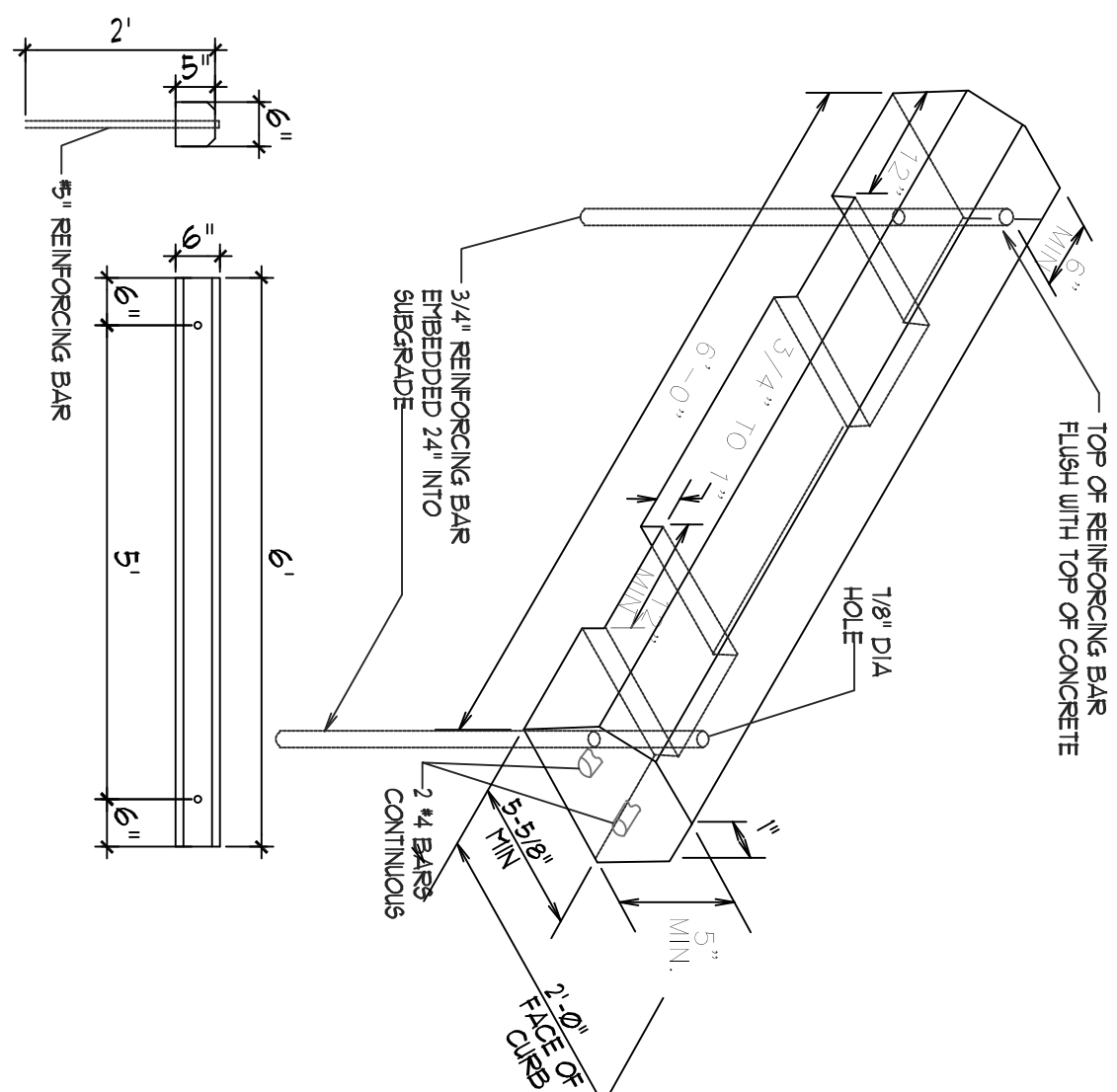
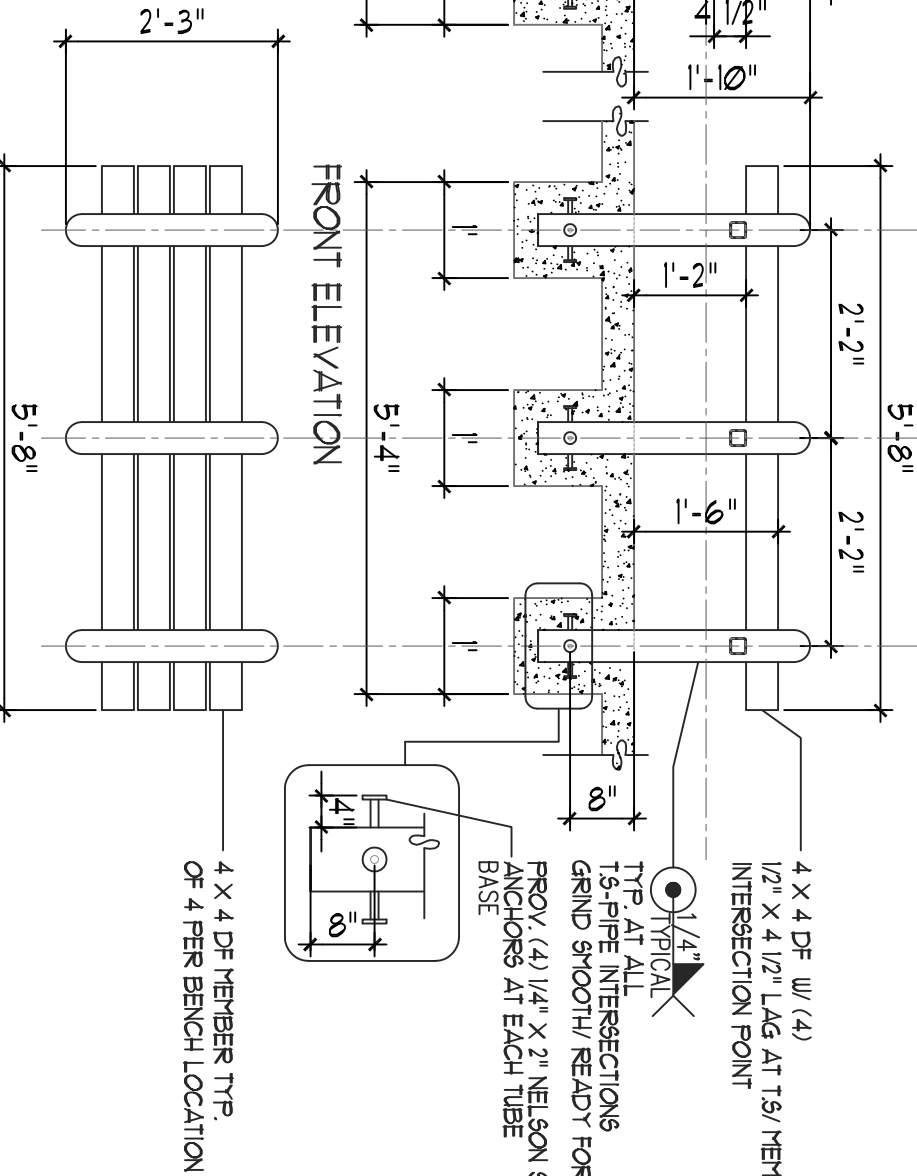
7 SITE DIRECTIONAL PAINT DETAIL



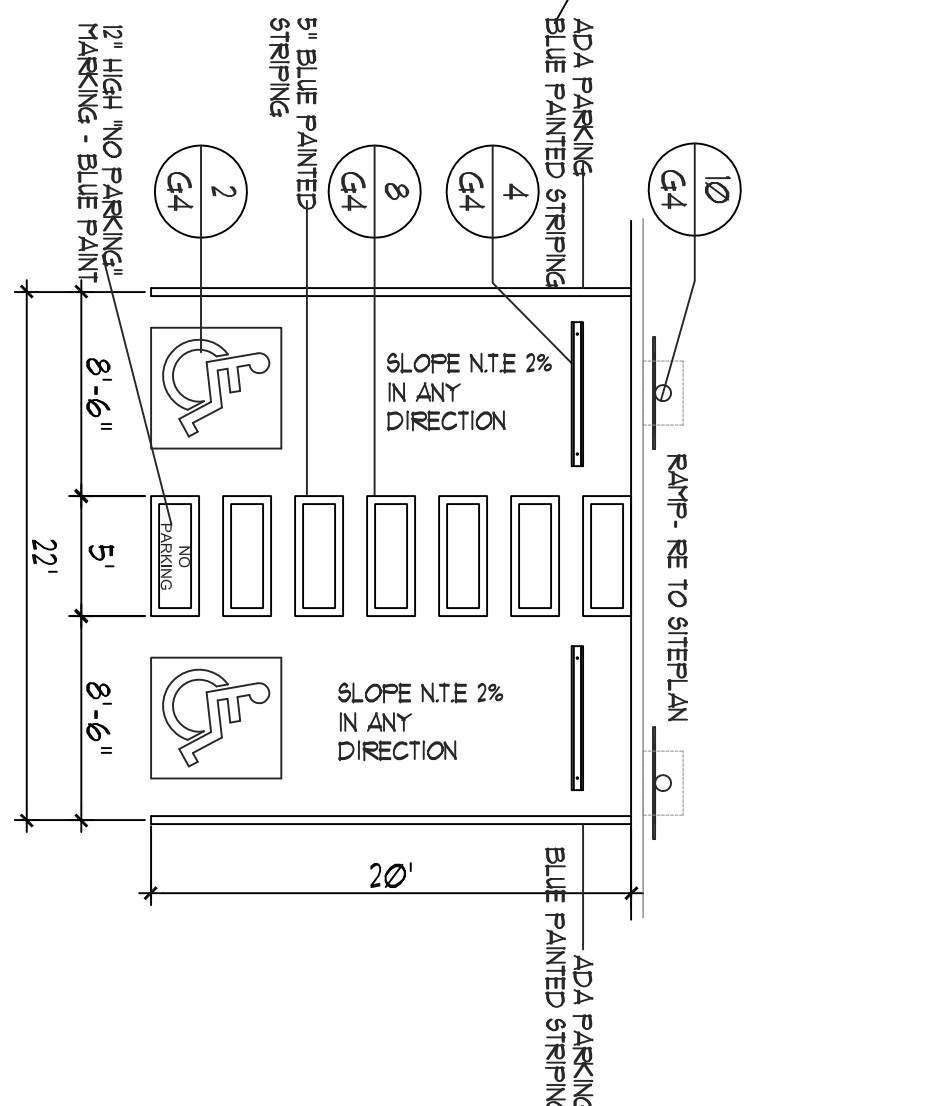
6 MOTORCYCLE PARKING PAINT DETAIL



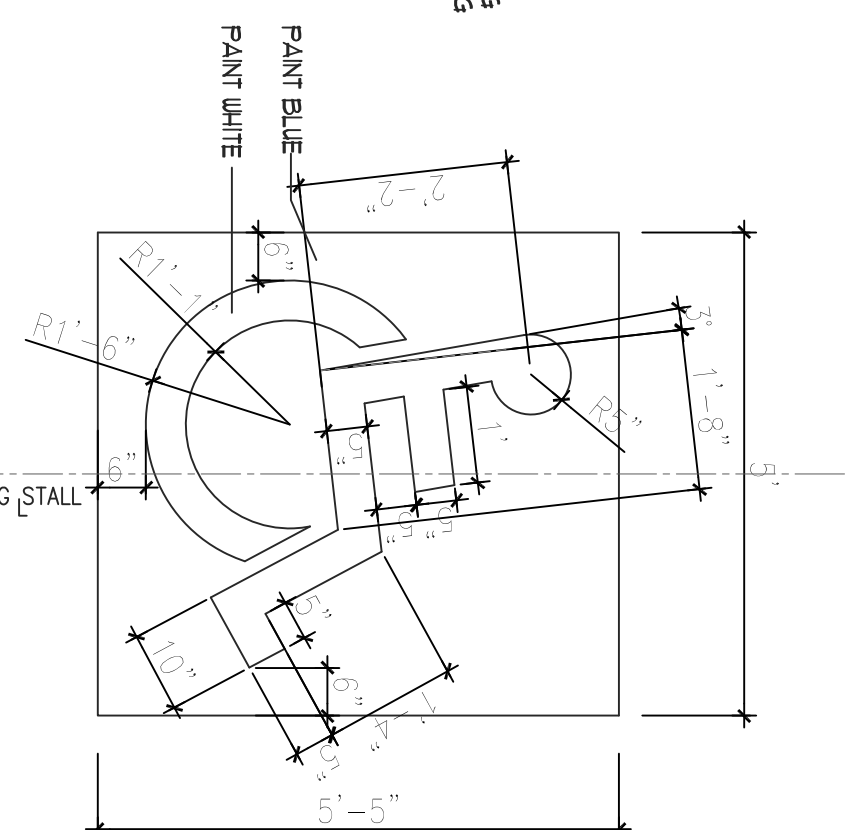
5 BENCH DETAIL



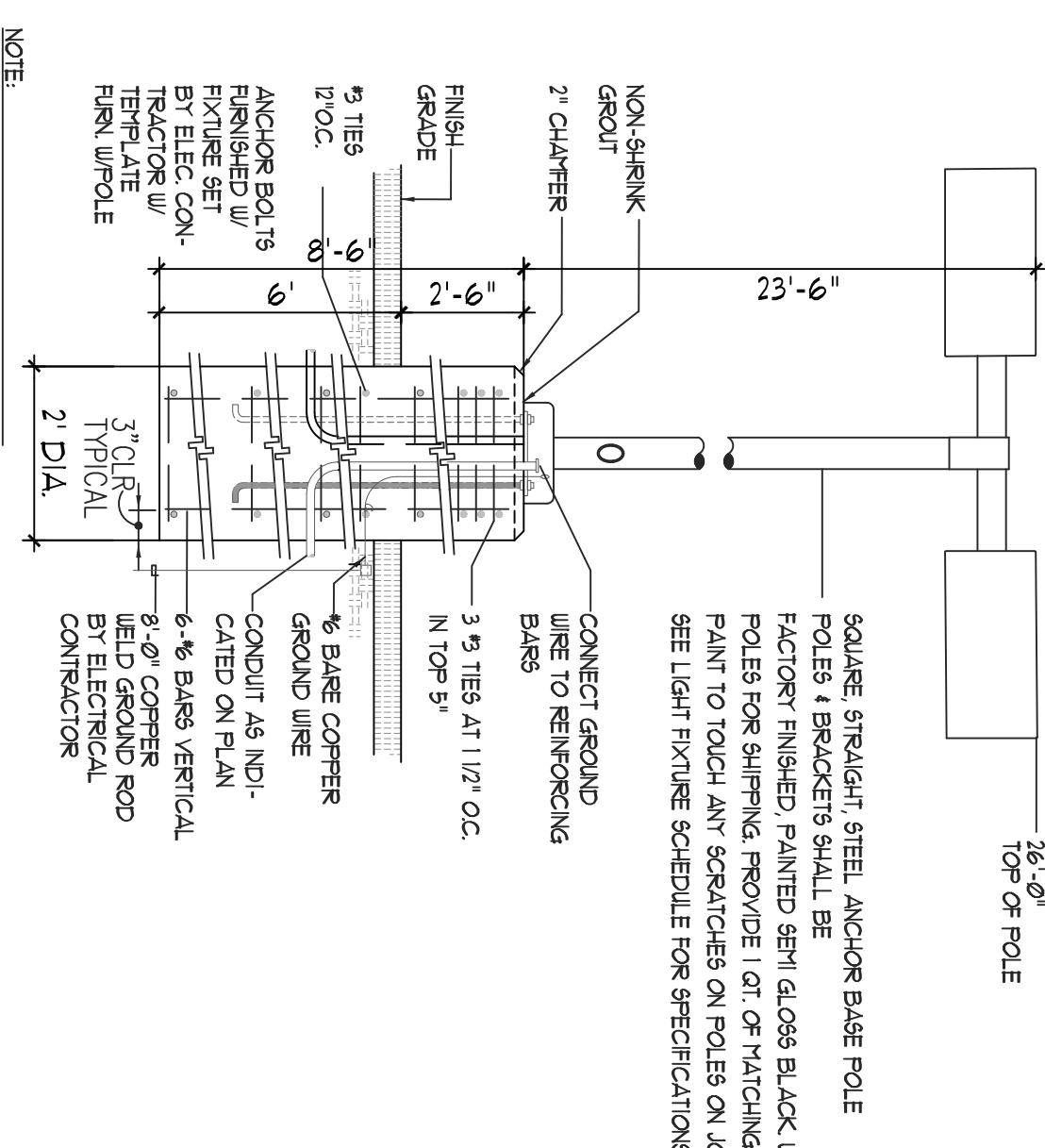
4 WHEEL STOP



3 HC PARKING PLAN DETAIL



2 HC SIGNAGE



1 LIGHT POLE DETAIL

NOTE:
1. MANUFACTURER SHALL WARRANT THAT THE COMPLETE ASSEMBLY, FIXTURES, POLE, BASE, SHALL WITHSTAND MINIMUM 100 LBS. WIND LOAD OR AS REQUIRED BY LOCAL AGENCY WHICH IS THE MOST STRINGENT.
2. CONTRACTOR SHALL VERIFY THAT ALL CONTRACTORS INSTALLED LIGHTS COMPLY WITH LOCAL CODE REQUIREMENTS.
3. SHOULD EXISTING POLE HEIGHT TO BE MATCHED EXCEED 22'.
GENERAL CONTRACTOR SHALL VERIFY WITH ARCHITECT ADEQUACY OF DESIGN SHOWN PRIOR TO INSTALLATION.



**MODULUS ARCHITECTS
AND LAND USE PLANNING**
8220 SAN PEDRO DR. N.E. SUITE 520
ALBUQUERQUE, NEW MEXICO 87102
PHONE (505) 338-1499 FAX (505) 338-1498

| REV | DATE | BY | REVISION |
|-----|------|----|----------|
| 1 | | | |
| 2 | | | |
| 3 | | | |
| 4 | | | |
| 5 | | | |
| 6 | | | |
| 7 | | | |
| 8 | | | |
| 9 | | | |
| 10 | | | |

| | |
|---------------------|---|
| DATE: 5/10/2024 | PROJECT TITLE: CARLISLE MARKETPLACE NWC OF INDIAN SCHOOL, AND CARLISLE ALBUQUERQUE, NEW MEXICO 87106 |
| SCALE: AS SHOWN | PROJECT MANAGER: STEPHEN DUNBAR, AIA |
| REV. SCALE: 1/8" | JOB NO. CMP |
| | DRAWN BY: C |
| | SHEET TITLE: SITE DETAILS |