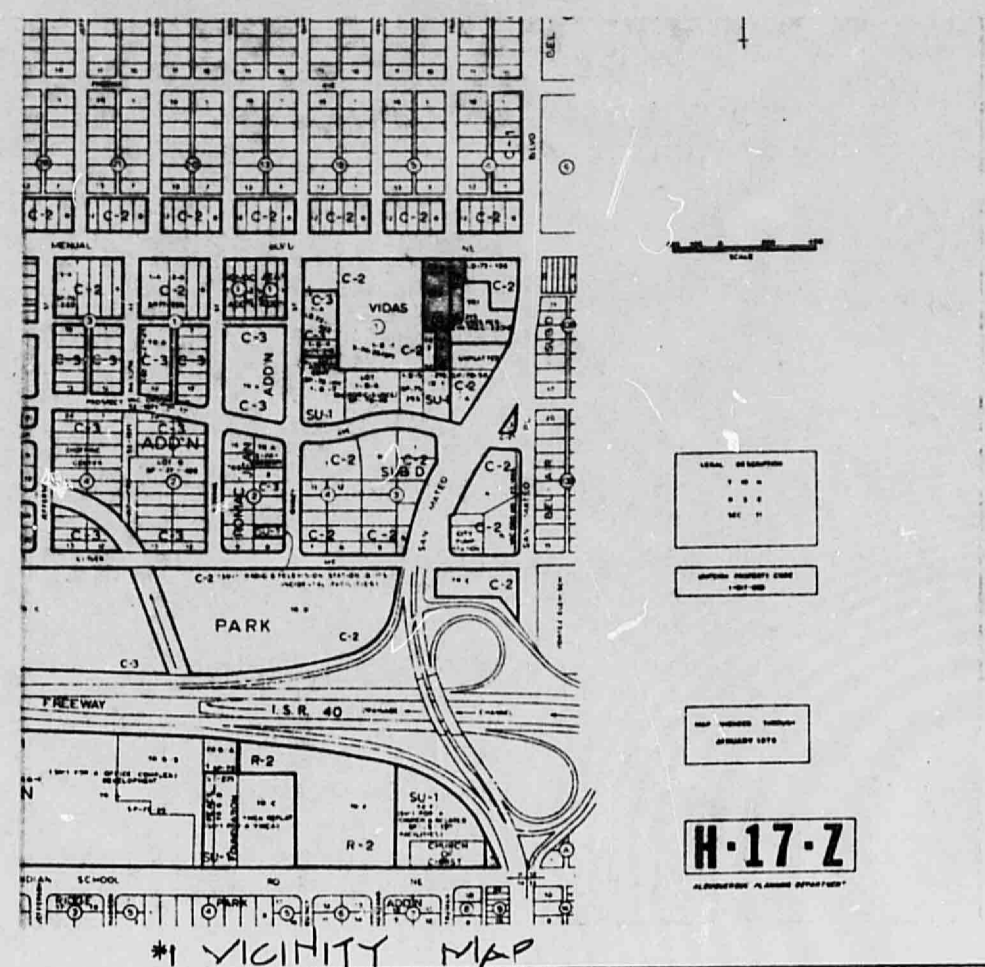


**SITE HYDROLOGIC DATA:**

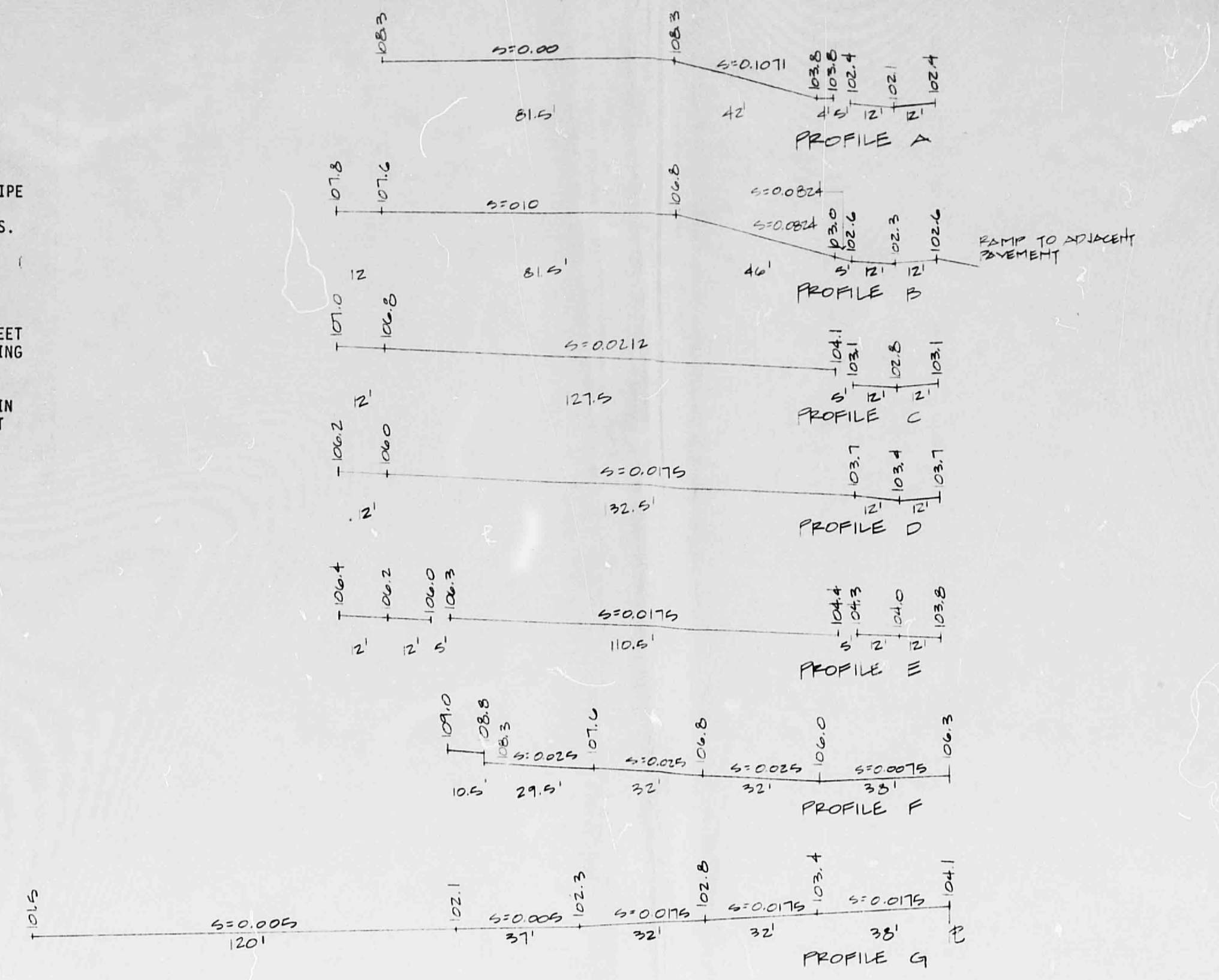
**INTERIOR SYSTEM --**

Total Area	57,960 S.F.
Hard Surface Area	1.33 Acres
Landscape Area	53,986 S.F.
Runoff Coefficients --	
Hard Surface Area	0.95
Landscape Area	0.20
Site Composite	0.90
Rainfall Intensity --	
Time of Concentration	4 Minutes
100 Yr. Frequency Intensity	6.5 in./hr.
Rate of Flow --	
100 Yr. Frequency	1.33 x 6.5 x 0.90 = 7.78 C.F.S.
Volume of Flow --	
100 Yr. - 6 hr. Precipitation	2.45 inches
100 Yr. Volume	57,960 x 0.90 x 2.45/12 = 10,650 C.F. = 0.24 A.P.
Overflow Elevation	5202.4 (m.s.l.)
Overflow Location	West drive approximately in line with La Belle's north parking lot drainage swale.



**NOTES:**

- ANALYSIS POINT (AP) 2601 AT PROSPECT AND SAN MATEO N.E. APPROXIMATELY 100' EAST OF SITE. STORM SEWER TIE INDICATES 100 YEAR FLOW IN PIPE (77 CFS) WITH NO FLOW IN STREET. PROSPECT STORM SEWER CAPACITY IS APPROXIMATELY 125 CFS.
- ROOF DRAINAGE ON-SITE BUILDING IS ALL TO THE SOUTH.
- THE SITE INCLUDES TRACTS A, C, AND 3 OF THE VIDAS SUBDIVISION INDICATED ON ZONE ATLAS SHEET H-17-Z AS AMENDED THROUGH JUNE 1983. (BUILDING IS ON TRACT A.)
- EXISTING SITE IMPROVEMENTS WERE CONSTRUCTED IN ACCORDANCE WITH CITY APPROVED DRAINAGE REPORT FOR THE SOUND WAREHOUSE-LA BELLE SITE DATED JANUARY, 1979.



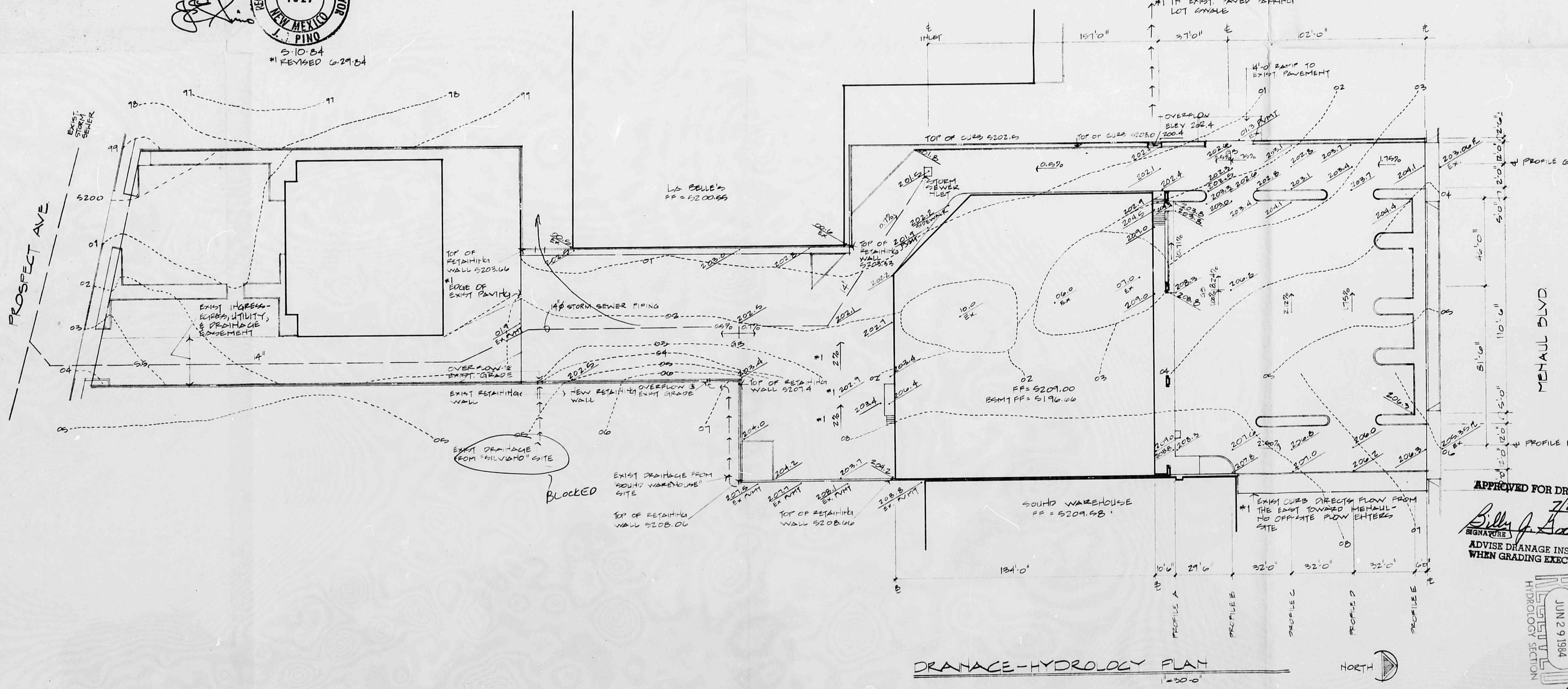
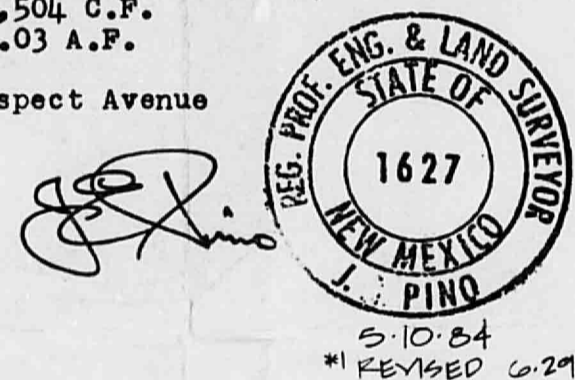
**OFFSITE SURFACE DRAINAGE --**

Total Area	7,752 S.F. = 0.18 Acres
Runoff Coefficient -- All Hard Surface	0.95
Intensity (Maximum)	7.5 in./hr.
Rate of Flow -- 100 Yr. Frequency	0.18 x 0.95 x 7.5 = 1.26 C.F.S.
Volume of Flow -- 100 Yr. Volume	7,752 x 0.95 x 2.45/12 = 1,504 C.F. = 0.03 A.P.

Drainage conducted on surface to Prospect Avenue as previously approved.

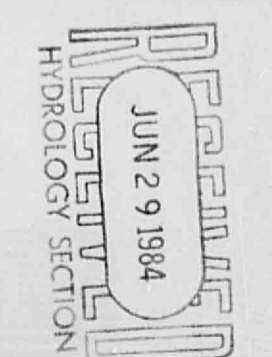
**\* LEGEND:**

- SPOT ELEVATIONS (NEW) (EX. = EXISTING)
- - - EXISTING CONTOURS
- 0.0% DIRECTION & PERCENT OF SLOPE
- ▭ STRUCTURES
- CURB
- STORM SEWER - SEE UTILITY PLAN FOR DETAILS



**DRAINAGE-HYDROLOGY PLAN**  
1" = 20' 0"

APPROVED FOR DRAINAGE  
7/24/84  
Billy J. ...  
ADVISE DRAINAGE INSPECTOR  
WHEN GRADING EXECUTED



H17/D25

**COMMERCIAL CENTER**  
FOR  
**ELMER SPROUL**

DRAINAGE-HYDROLOGY PLAN  
NOTES ACCORDING TO CITY OF ALBUQUERQUE

**SP-1**

**GARNER/HICKS ARCHITECTS**  
The Sunshine Building  
112 Second St. S.W.  
Albuquerque, New Mexico 87102  
(505) 243-7492



