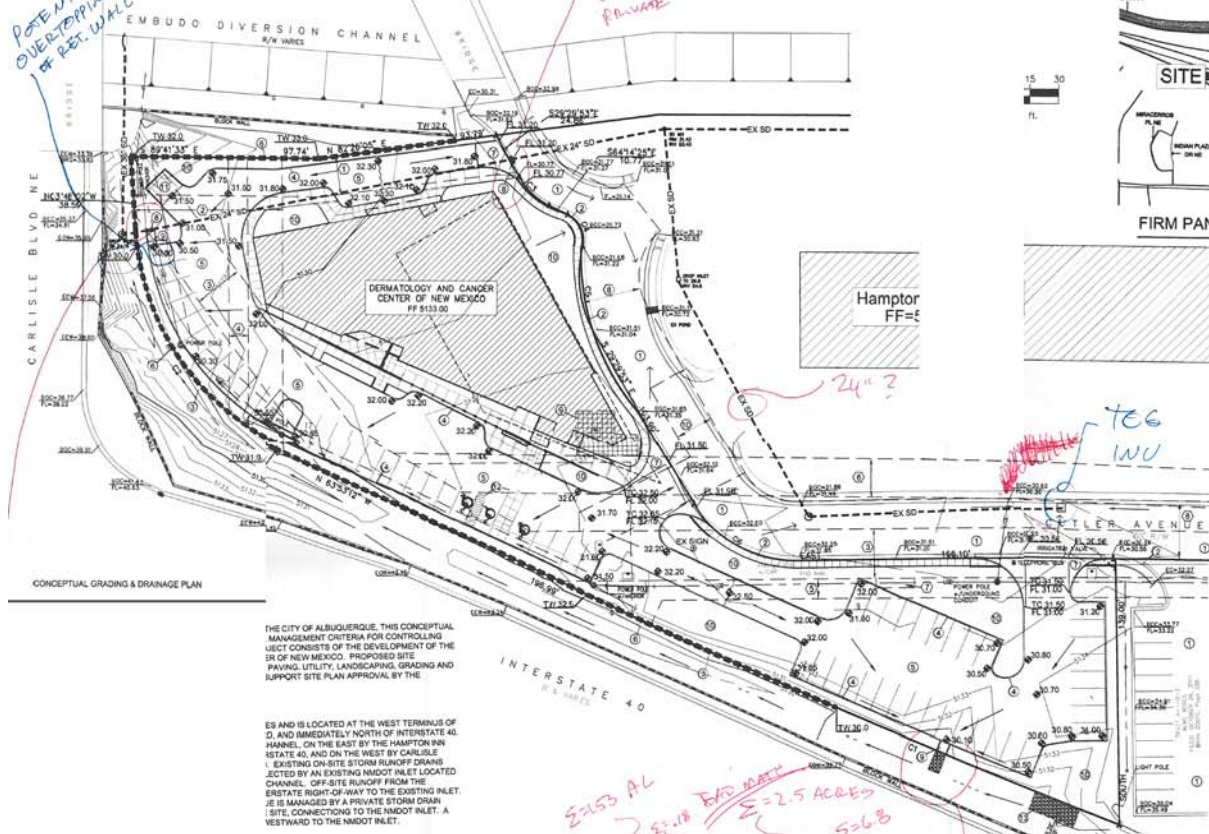


POTENTIAL
OVERTOPPING
OF RET. WALL



CONCEPTUAL GRADING & DRAINAGE PLAN

THE CITY OF ALBUQUERQUE, THIS CONCEPTUAL MANAGEMENT CRITERIA FOR CONTROLLING URBAN RUNOFF CONSISTS OF THE DEVELOPMENT OF THE SITE, PAVING, UTILITY, LANDSCAPING, GRADING AND SUPPORT SITE PLAN APPROVAL BY THE

ES AND IS LOCATED AT THE WEST TERMINUS OF D, AND IMMEDIATELY NORTH OF INTERSTATE 40. HANDEL, ON THE EAST BY THE HAMPTON PARKWAY, ON THE WEST BY CARLISLE BLVD. EXISTING ON-SITE STORM DRAINAGE IS COLLECTED BY AN EXISTING MANHOLE INLET LOCATED ON THE EAST SIDE OF THE SITE. OFF-SITE RUNOFF FROM THE ESTATE RIGHT-OF-WAY TO THE EXISTING INLET, IS MANAGED BY A PRIVATE STORM DRAIN (SITE), CONNECTING TO THE INLET INLET. A VESTIBULE TO THE INLET INLET.

PROPERTY IS LOCATED WITHIN A DESIGNATED

LOPED AS THE DERMATOLOGY AND CANCER CENTER. S WILL DRAIN TO EITHER THE INTERSTATE 40 OR MAIN TO THE WEST SIDE OF THE SITE, WHERE A 12-INCH STORM DRAIN, BASIN 'B' WILL DRAIN SOUTH MAIN WILL BE IMPROVED ALLOWING FOR INLET. BASIN 'C' WILL DRAIN TO A NEW INLET AT

PERMITS GRADE AND CONSTRUCT THE DRAINAGE TO DEMONSTRATE THE DIRECTION OF FLOW FOR BOTH EXISTING AND DEVELOPED SITE. THE PLAN REVIEW AND APPROVAL, A FINAL POSSES WILL BE SUBMITTED AT BUILDING PERMIT

IMPLEMENTED DURING CONSTRUCTION TO LIMIT CENT PROPERTIES. PROJECT'S DISTURBING NATIONAL POLLUTANT DISCHARGE ELIMINATION

PROJECT HYDROLOGY
DERMATOLOGY AND CANCER CENTER OF NM

AHYMO									
PRECIP. ZONE	AREA (AC)	A (IN)	B (IN)	C (IN)	D (IN)	E	Q (CFS)	VOL (CU FT)	
PERIOD	2.35"								
PERIOD	13.95"								
EXISTING	AREA (AC)	A (IN)	B (IN)	C (IN)	D (IN)	E	Q (CFS)	VOL (CU FT)	
SITE	1.50	0.30	0.08	0.18	1.27	1.85	6.8	0.3443	
PROPOSED	AREA (AC)	A (IN)	B (IN)	C (IN)	D (IN)	E	Q (CFS)	VOL (CU FT)	
SITE	1.50	0.30	0.08	0.18	1.27	1.85	6.8	0.3443	
A	1.06	0.30	0.08	0.18	0.36	1.36	4.4	0.1628	
B	0.41	0.00	0.00	0.00	0.36	1.36	2.8	0.8733	
C	0.08	0.00	0.01	0.03	0.04	1.36	0.4	0.4730	

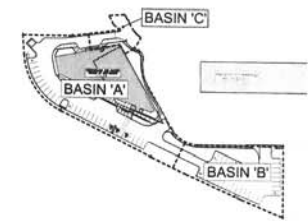
CURVE TABLE

CURVE	RADIUS	DELTA	ARC	BEARING	CHORD
C1	3819.73	241°15'48"	381.30	N 68°56'47" W	383.33
C2	130.00	85°07'48"	130.93	N 27°04'42" W	130.08



LEGEND

ITEM	EXISTING	PROPOSED
STORM SEWER	30" SD	30" SD
MANHOLE	30" SD	30" SD
CURB AND GUTTER	30" SD	30" SD
HEADER CURB	30" SD	30" SD
DROP INLET	30" SD	30" SD
OVERHEAD ELEC. WITH POWER POLE	30" SD	30" SD
UNDERGROUND ELEC. GASTELTY	30" SD	30" SD
CURB ELEVATIONS	18.7	18.7
SPOT ELEV.	18.7	18.7
SEWER SERVICE	3	3
RIGHT OF WAY	3	3
EASEMENT	3	3
POWER POLE (QUYED)	PP	PP
CENTERLINE	TA 18.2	TA 18.2
TOP OF ASPHALT ELEV.	TA 18.2	TA 18.2
TOP OF CURB ELEV.	TC 18.2	TC 18.2
CONTOUR W/ ELEVATION	4862	52



DRAINAGE BASIN MAP NTS

H17-D036A2

COMPOSITE of Scanned portions of
Conceptual Grading Plan
by Dennis Lorenz, c2006

- ① DETAIL FOR NEW C
- ② SHOW EXTENTS OF BASINS
- ③ FLOOR FOR PRIVATE STORM DRAIN
- ④ SHOWED MAINS FOR PRIVATE C