

CITY OF ALBUQUERQUE



July 14, 2015

Brigitte M. Fuller, P.E.
Wilson and Company, Inc.
4900 Lang Ave NE
Albuquerque, NM 87109

**Re: The Cheesecake Factory- Coronado Center
Erosion Sediment Control Plan
Engineer's Stamp Date 6-26-15 (H18E005D)**

Dear Ms. Fuller,

Based upon the information provided in your submittal received 7-2-15, the above referenced plan is approved to be included in the SWPPP and for Grading Permit/Building Permit once Hydrology has approved the grading plan with the following note.

It is difficult to achieve a good seal with silt fence on an impervious area (asphalt or concrete). A waddle can be used at the base of the silt fence to prevent sediment from leaving the site.

PO Box 1293

If you have any questions, you can contact me at 924-3420.

Albuquerque

Sincerely,

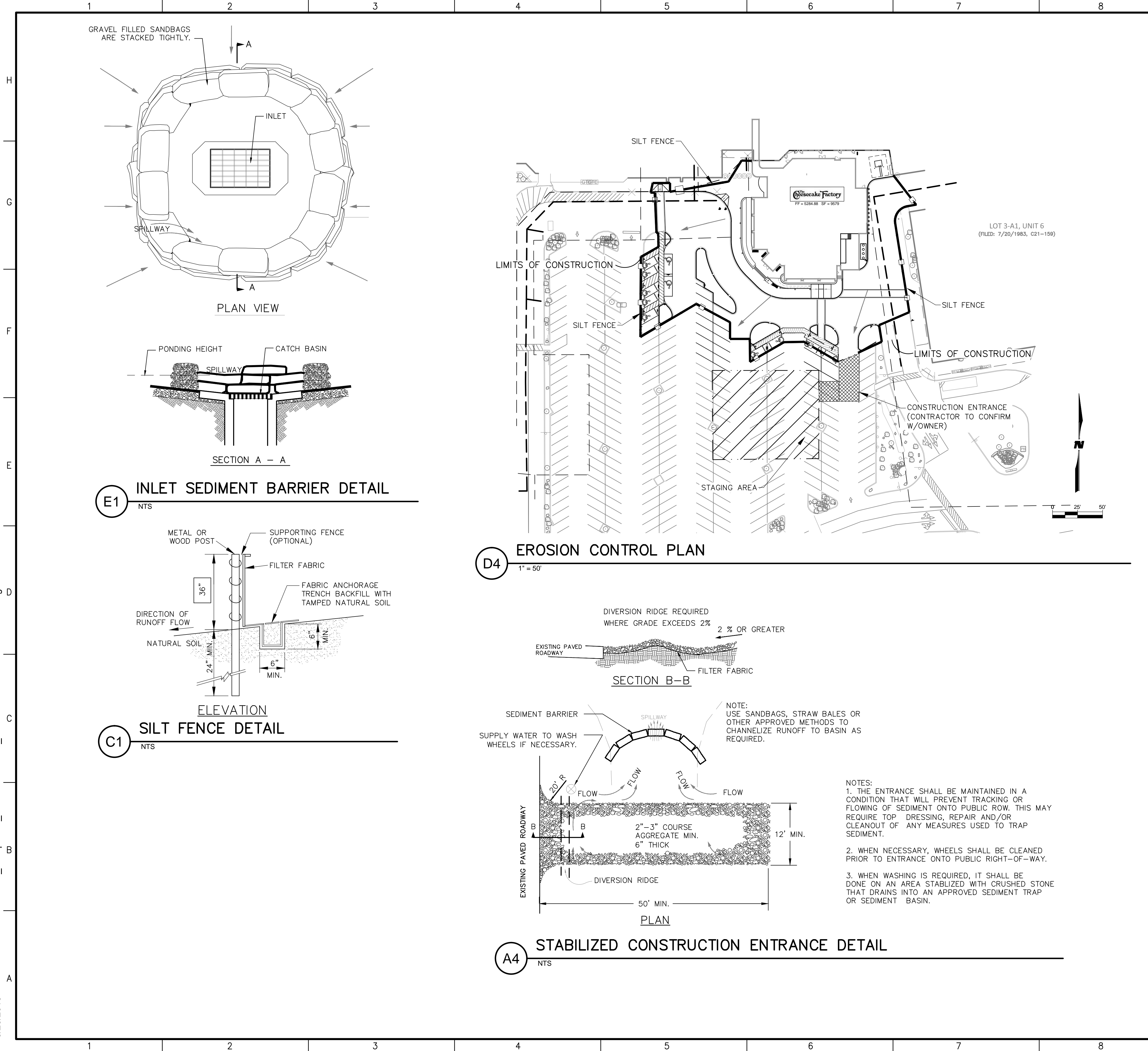
Curtis Cherne, P.E.
Principal Engineer, Stormwater Quality
Planning Dept.

New Mexico 87103

www.cabq.gov

C: email

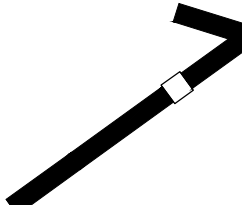


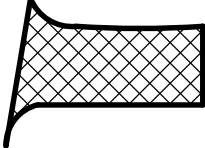
6/26/2015 M:\MSD\15-600-036-002_Disciplines_SHEETS\156036_C1.4 EROSION CONTR PLAN.dwg



EROSION CONTROL NOTES

1. THE CONTRACTOR SHALL CONFORM TO ALL CITY, COUNTY, STATE AND FEDERAL DUST AND EROSION CONTROL REGULATIONS AND THE THE NATIONAL POLLUTANT DISCHARGE ELIMINATION SYSTEM (NPDES) REQUIREMENTS.
2. CONTRACTOR SHALL PREPARE AND OBTAIN ANY NECESSARY DUST OR EROSION CONTROL PERMITS FROM REGULATORY AGENCIES.
3. THE CONTRACTOR SHALL PROMPTLY REMOVE ANY MATERIAL EXCAVATED WITHIN THE PUBLIC OR PRIVATE RIGHT-OF-WAY TO KEEP IT FROM WASHING OFF THE PROJECT SITE.
4. CONTRACTOR SHALL ENSURE THAT NO SOIL ERODES FROM THE SITE ONTO OTHER PROPERTY BY CONSTRUCTING TEMPORARY EROSION CONTROL BERMS OR INSTALLING SILT FENCES AT THE PROPERTY LINES.
5. CONTRACTOR SHALL WET THE SOIL AS NEEDED PREVENT FROM BLOWING. CONSTRUCTION AREAS SHALL BE WATERED FOR DUST CONTROL IN COMPLIANCE WITH GOVERNMENT ORDINANCES. WATERING, AS REQUIRED FOR CONSTRUCTION AND DUST CONTROL, SHALL BE CONSIDERED INCIDENTAL TO THE CONTRACT AND NO MEASUREMENT OR PAYMENT SHALL BE MADE THEREFOR. THE CONTRACTOR SHALL BE RESPONSIBLE FOR LOCATING AND SUPPLYING WATER AS REQUIRED.
6. ANY AREAS DISTURBED BY CONSTRUCTION AND NOT COVERED BY LANDSCAPING OR ANY IMPERVIOUS SURFACE SHALL BE REVEGETATED WITH NATIVE GRASS SEEDING. WHEN CONSTRUCTION ACTIVITIES CEASE AND EARTH DISTURBING ACTIVITIES WILL NOT RESUME WITHIN 14 DAYS, STABILIZATION MEASURES MUST BE INITIATED, UNLESS INDICATED OTHERWISE ON THESE PLANS OR ON A LANDSCAPE PLAN. SEEDING SHALL BE NATIVE GRASS SEEDING PER SECTION 1012 OF THE APWA STANDARD SPECIFICATIONS FOR PUBLIC WORKS CONSTRUCTION. THIS IS AN INCIDENTAL COST TO THE CONTRACT.
7. ALL WASTE PRODUCTS FROM THE CONSTRUCTION SITE, INCLUDING ITEMS DESIGNATED FOR REMOVAL, CONSTRUCTION WASTE, CONSTRUCTION EQUIPMENT WASTE PRODUCTS (OIL, GAS, TIRES, ETC.) GARBAGE, GRUBBING, EXCESS CUT MATERIAL, VEGETATIVE DEBRIS, ETC. SHALL BE APPROPRIATELY DISPOSED OF OFF-SITE AT NO ADDITIONAL COST TO THE OWNER. IT SHALL BE THE CONTRACTOR'S RESPONSIBILITY TO OBTAIN PERMITS REQUIRED FOR HAUL OR DISPOSAL OF WASTE PRODUCTS. IT SHALL BE THE CONTRACTOR'S RESPONSIBILITY TO ENSURE THAT WASTE DISPOSAL SITES COMPLY WITH GOVERNMENT REGULATIONS REGARDING THE ENVIRONMENT, ENDANGERED SPECIES AND ARCHAEOLOGICAL RESOURCES.
8. THE CONTRACTOR SHALL BE RESPONSIBLE FOR THE CLEANUP AND REPORTING OF SPILLS OF HAZARDOUS MATERIALS ASSOCIATED WITH THE CONSTRUCTION SITE. HAZARDOUS MATERIALS INCLUDE GASOLINE, DIESEL FUEL, MOTOR OIL, SOLVENTS, CHEMICALS, PAINTS, ETC. WHICH MAY BE A THREAT TO THE ENVIRONMENT. THE CONTRACTOR SHALL REPORT THE DISCOVERY OF PAST OR PRESENT SPILLS TO THE NEW MEXICO ENVIRONMENT DEPARTMENT EMERGENCY RESPONSE AT 1-(505)-827-9329.
9. THE CONTRACTOR SHALL COMPLY WITH ALL APPLICABLE REGULATIONS CONCERNING SURFACE AND UNDERGROUND WATER. CONTACT WITH SURFACE WATER BY CONSTRUCTION EQUIPMENT AND PERSONNEL SHALL BE MINIMIZED. EQUIPMENT MAINTENANCE AND REFUELING OPERATIONS SHALL BE PERFORMED IN AN ENVIRONMENTALLY SAFE MANNER IN COMPLIANCE WITH GOVERNMENT REGULATIONS.
10. WHERE STORM INLETS ARE SUSCEPTIBLE TO IN-FLOW OF SILT OR DEBRIS FROM CONSTRUCTION ACTIVITIES, PROTECTION SHALL BE INSTALLED ON INLET UPSTREAM SIDE.

LEGEND

-  SILT FENCE
-  INLET PROTECTION
-  DIRECTION OF FLOW
-  CONSTRUCTION ENTRANCE

WILSON & COMPANY
2600 THE AMERICAN RD. SE SUITE 100
RIO RANCHO, NM 87124
PHONE: 505-898-8021
FAX: 505-898-8501
www.wilsonco.com



The Desecake Factory.
CORONADO CENTER
6600 Menaul Blvd NE
ALBUQUERQUE, NM 87110

PROJECT NAME	DESCRIPTION	DATE	REV.	BY

PROJECT NO:	1560003600
DESIGNED BY:	KIS
DRAWN BY:	KIS, JL
CHECKED BY:	BMF
DATE:	May 2015

SHEET TITLE
EROSION CONTROL PLAN

SHEET NO:
1 OF 1