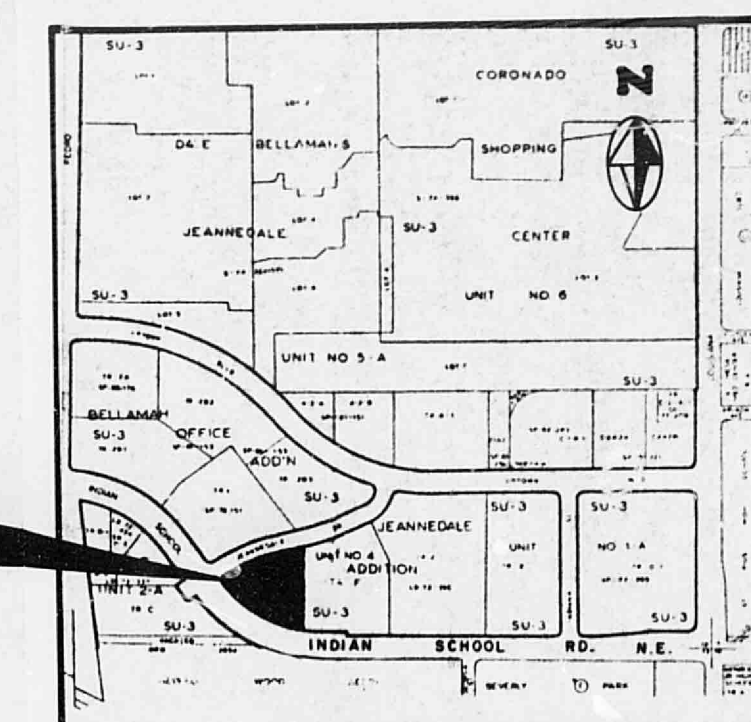


APRIL 22, 1985

REVISIONS
REVISED PHASE II
MAY 8, 1986

METRO UPTOWN PLAZA
PARKING STRUCTURE
6301 INDIAN SCHOOL ROAD NE.
ALBUQUERQUE, NEW MEXICO

claudio antonio vigil & associates, p.a.
architects/planners/consultants
2340 alamo s.e., suite 101
albuquerque, new mexico 87106
505-247-1000



VICINITY MAP
ZONE ATLAS H-18

PROJECT LOCATION

NOTES

- CONTRACTOR SHALL BE RESPONSIBLE FOR KEEPING ALL SEDIMENT AND DISTURBED SOIL OFF PUBLIC RIGHT-OF-WAY DURING ROUGH GRADING AND CONSTRUCTION PHASES.
- IF CONSTRUCTION IS TO CONTINUE THROUGH THE MONTHS OF JULY, SEPTEMBER, OR OCTOBER, CONTRACTOR IS TO CONSTRUCT A TEMPORARY 2'-0" HIGH, COMPACTED BERM, ALONG THE NORTH AND SOUTH SIDES OF THE PROPERTY LINE FOR EROSION PROTECTION.
- ALL SUBGRADE UNDER PAVEMENT, CURBS AND GUTTERS SHALL BE COMPACTED TO 95% MODIFIED PROCTOR TO A 6-INCH MINIMUM DEPTH.
- PROJECT BENCH MARK: "X" - MARK ON NORTH BONNET BOLT OF FIRE HYDRANT LOCATED NEAR THE SOUTHEASTERN CORNER OF THIS TRACT; ELEVATION = 5246.66 MSL.
- FLOOD HAZARD: CITY OF ALBUQUERQUE FLOODWAY MAPS SHOW THAT THE PROPOSED SITE LIES ADJACENT TO A FLOOD HAZARD AREA LOCATED ON INDIAN SCHOOL ROAD. THE FINISHED FLOOR ELEVATION IS 5241.75 MSL, WHICH IS 2.0 FEET ABOVE THE HIGHEST FLOWLINE ELEVATION ON INDIAN SCHOOL ROAD ADJACENT TO BUILDING.
- LEGAL DESCRIPTION: TRACT E-UNIT 4, DALE J. BELLAMAH'S JEANNEDALE ADDITION; AREA 1.8186 ACRES.
- CURRENT ZONE STANDING: SU-3.
- NOTE THAT ALL DRAINAGE FACILITIES INCLUDED IN PHASE I TO REMAIN (SEE DRAINAGE - GRADING PLAN 9/84). THIS INCLUDES M.H. #1, M.H. #2 (NOW 4" DIA.), LINE "A" AND LINE "B". ADDITIONAL DRAINAGE FACILITIES TO BE INCLUDED IN PHASE II ARE AS SHOWN ON THIS PLAN. ALL CONSTRUCTION OF DRAINAGE FACILITIES WITHIN CITY R.O.W. ARE APPROVED AS OF 10/12/84, CITY FILE D-161.

LEGEND

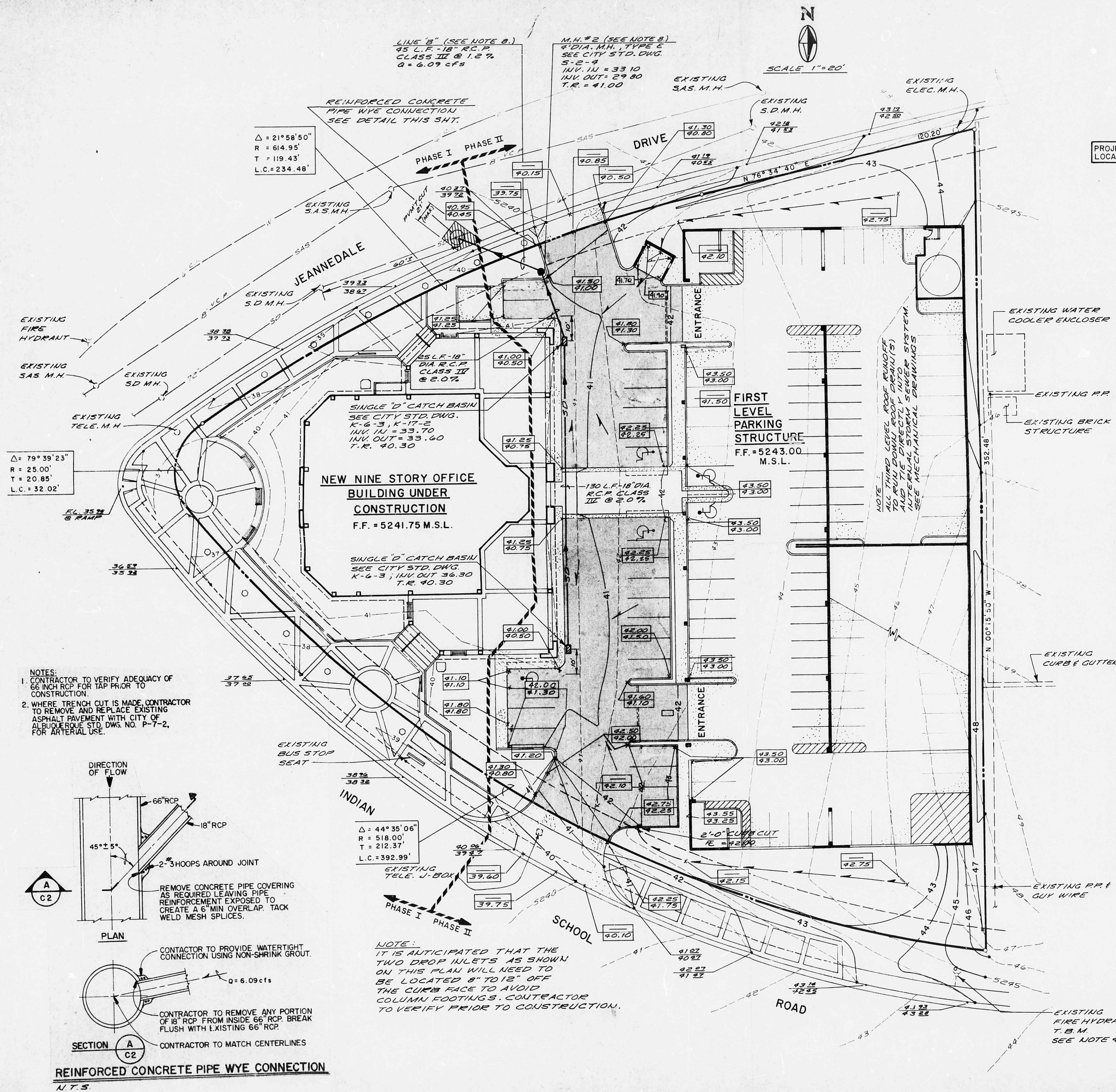
EASEMENT LIMITS	
SD	EXISTING STORM SEWER
SAS	EXISTING SANITARY SEWER
W	EXISTING WATER LINE
	EXISTING FIRE HYDRANT
	CATCH BASIN
T.C. 43.50 F.L. 43.00	PROPOSED SPOT ELEVATION
SD	DIRECTION OF FLOW
SD	NEW STORM DRAIN
	NEW MANHOLE
41	EXISTING CONTOUR
41	NEW CONTOUR
	CONCRETE PAVING
	ASPHALT PAVING
T.C. 43.15 F.L. 42.25	EXISTING SPOT ELEVATION
	PHASE LINE

APPROVED FOR DRAINAGE

6/5/85
Billy J. Corbin
REGISTERED PROFESSIONAL ENGINEER
ADVISE DRAINAGE INSPECTOR
WHEN GRADING REQUIRED - HYDROLOGY SECTION
JUN 05 1985

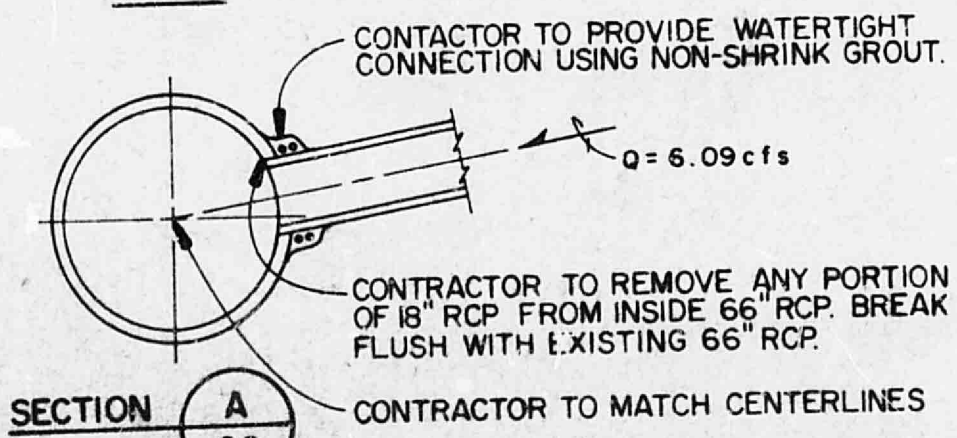
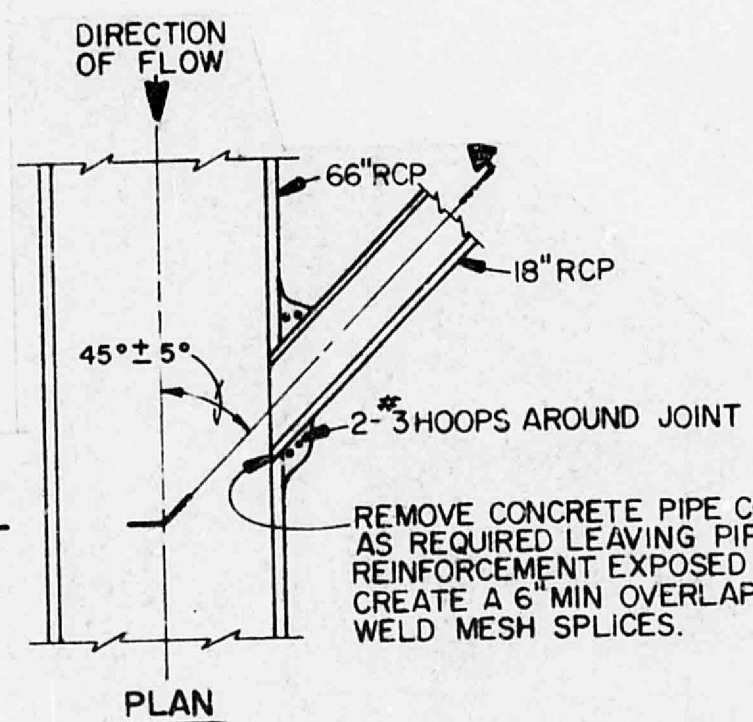
MOLZEN-CORBIN & Associates
ENGINEERS/PLANNERS/CONSULTANTS Albuquerque • New Mexico • Carlsbad

DRAINAGE AND GRADING PLAN



NOTES:

- CONTRACTOR TO VERIFY ADEQUACY OF 66 INCH RCP FOR TAP PRIOR TO CONSTRUCTION.
- WHERE TRENCH CUT IS MADE CONTRACTOR TO REMOVE AND REPLACE EXISTING ASPHALT PAVEMENT WITH CITY OF ALBUQUERQUE STD. DWS. NO. P-7-2, FOR ARTERIAL USE.



REINFORCED CONCRETE PIPE WYE CONNECTION
N.T.S.